

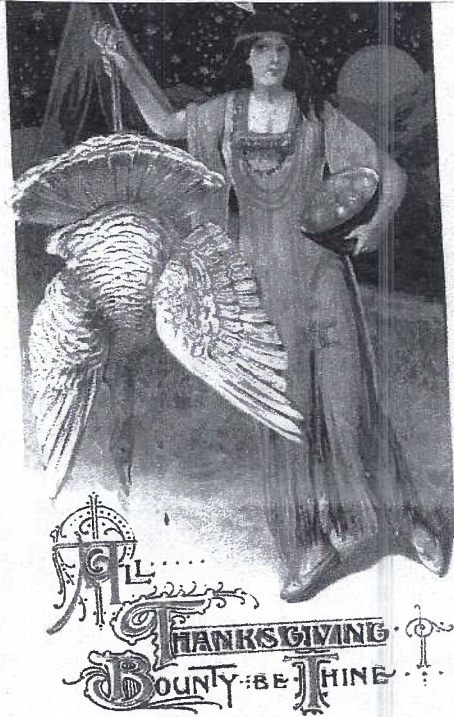
# THE CARD - Vol. 16, No. 11. Issue 191. November 2005.

Monthly Publication of the Lancaster County Postcard Club, Lancaster, PA.

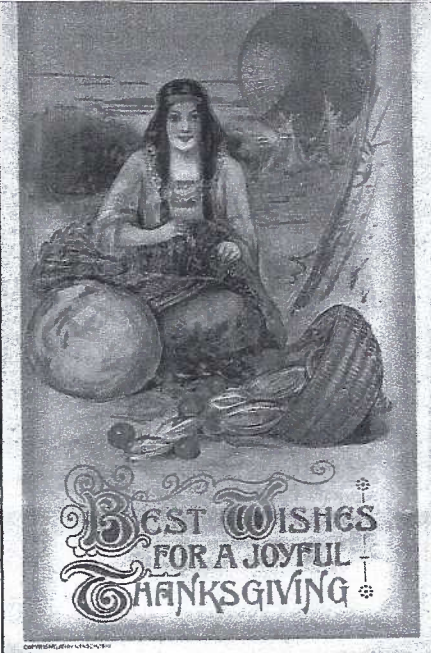
*Enjoying postcards through education and entertainment.*

Next Meeting: Mon., November 21, 2005. Farm & Home Center. Buy, sell, trade from 5:30. Meeting at 7 pm.

Club and Editor's address: LCPC c/o Jim Ward, 1795 Kleinfeltersville Rd., Stevens, PA. 17578-9669 or [midcreek@ptd.net](mailto:midcreek@ptd.net).



DESIGN COPYRIGHTED, JOHN WINSCH, 1912.



COPYRIGHT JOHN WINSCH, 1912



COPYRIGHT JOHN WINSCH, 1912



DESIGN COPYRIGHTED, JOHN WINSCH, 1912.



DESIGN COPYRIGHTED, JOHN WINSCH, 1912



DESIGN COPYRIGHTED, JOHN WINSCH, 1912



DESIGN COPYRIGHTED, JOHN WINSCH, 1912



## October Meeting

It was a beautiful, crisp autumn evening and the early buyers kept these members busy buying at their tables: Leighton Stover, Dick Bishop, Ray Dennis, Al Schaub, Ruth Moyer, Mike Middleton, Dede Schaeffer\* and Jim Ward.

Pres. Sharon Gromis invited the 57 members and guests present to sign up for the Christmas Dinner. It will be on our regular meeting night, Dec. 19, 2005 and will be "pot luck" type. Bring a hot or cold dish, meat, veggies, salads or desserts. More details will be in the November Card.

Tablets, a Schmucker greeting card, a plant, and felt markers were the door prizes and they were won by Jere Greider, Gisela Withers, Ruth Moyer, Maria Schurz and Anne Rineer, one of our guests. The 50/50 drawing of \$34 was won by Gisela.

Our club is still without nominees for the 2006 jobs of vice-president, an editor, a director and social committee chair.

\*Dede was selling greeting cards produced from original Samuel Schmucker paintings owned by Jack and Susan Davis. The full color images, 3 1/2" x 5 1/2", can be slipped out of the greeting cards for fine art framing. There are still approximately 50 different images available. They are \$3 each. You can contact Dede at 717-392-3955. She will have them at the York International Show and at our November meeting.

### New Member

#748 Johanna Gingher 55 Peach Lane, Ronks, PA 17572. E-mail [rjgingher@comcast.net](mailto:rjgingher@comcast.net) Ph. 717-687-8333. Johanna collects Lancaster City, Intercourse, Paradise and holiday postcards.

## Monthly Card Competition

ORANGE was the key word for a single PC and it drew great response from 19 members! As we might expect, there were lots of Halloween – eight of them; there were also two Thanksgivings, 2 little girls, a seahorse, a carrier of soft drinks and five real, juicy oranges.

**Ruth Moyer** FIRST I'm Some Pumpkin!  
**Mary Darrenkamp** SECOND California Oranges  
**Walt Mowrer** THIRD A Witch on a Pumpkin  
 Honorable Mentions go to – **Tom Beck, Carol Dennis, Ray Dennis, Carol Giona, Betty Gregg, Jere Greider, Martha Grove, Don Jumper, Bill Middleton, Carolyn Middleton, Harold Moyer, Dick Pendergrast, Tom Schaum, Sandra Schaub, Betty Sowers, and Jim Ward.**

November's topic is **Something to be Thankful For**, a single card.

We enjoyed Al Schaub's WWII Postcard program. Remember, postcards and other forms of communication convey 1) information, 2) promotion, 3) attitude and 4) something about ourselves.

### November Program

The program on Nov. 21 will be our Annual Auction. Jere Greider said there will be about 100 lots but they were not ready to be listed for this Card. Get there early and examine the lots to your enjoyment.

### Future Shows

**Nov. 11-12** NYC Metropolitan Post Card Club's 59<sup>th</sup> show. New Yorker Hotel (Ramada) 34<sup>th</sup> and 8<sup>th</sup>.

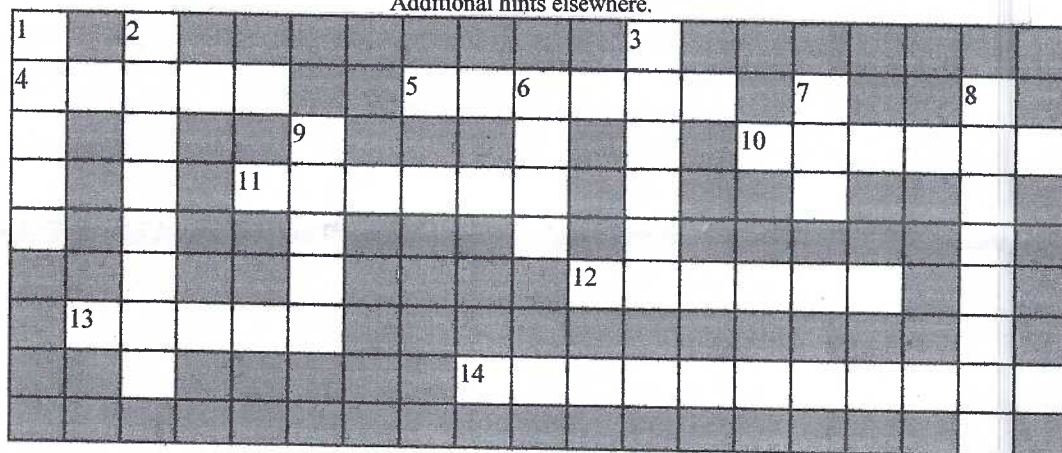
**Nov. 18-19** York, PA York International (Bill Martin) York Fairgrounds \$5 for both days.

**Nov. 25-26** Morlatton Post Card Club's 30<sup>th</sup> Fall Show. Farm & Home Center **Lancaster, PA** \$1.50. No early dealer sales. (Many LCPC members here.)

## LCPC Presidents from 1990 to 2005

Answers will be the presidents' last names. Include the first name initial for the Becks.

Additional hints elsewhere.



### ACROSS

4. Taught literature and computers
5. Once had chicken fingers
10. A two-job mother
11. Tended many flocks
12. A philatelist first
13. Patient with patients
14. Was paid for fun at the pool

### DOWN

1. Once an elephant rider
2. Still a Civil War buff
3. Has dirt-soiled fingers
6. Had more jobs than wives
7. Spent years in one room
8. Was a two-hat president
9. Had paint-soiled fingers

Jim WARD '90  
 Earl CARVER '91  
 Dorathy FRY '92  
 Don DAVIS '93  
 Walt MOWRER '94  
 Bob KRAMER '95  
 Lewis BECHTOLD '96  
 Ruth FRANKHOUSER '97  
 Jim WARD '98  
 Susan GLASS '99  
 Walt MOWRER '00  
 Betty BECK '01  
 Tom BECK '02  
 Bryan BENNER '03  
 Doug MILLIKEN '04  
 Susan GROMIS '05



## Chateausque Home Gets \$3M Addition

Lancaster has only a few homes that qualify as chateausque\* and one of them has been known as the Hamilton Club since 1912. Before that it was the residence of Catherine Haldeman Long. Catherine was the only child of wealthy Judge Henry Long who built the stone edifice at N. Duke and E. Orange St. for his daughter about 1891.

The Hamilton Club with 650 members has outgrown the magnificent home in its present form and intends to build a stone addition along Orange St. to N. Cherry. The added facilities will extend to the Long home's carriage house at Orange and Cherry Sts. For a short time that



*Hamilton Club, Lancaster, Pa.*



**SAMUEL K. LANDIS**  
Agent for Full Line of  
**STUDEBAKER AUTOMOBILES**  
No. 126 East Orange St.  
Lancaster, Penna.

*The b/w Landis PC has the identical back of some Little Art Shop cards. It reads "Postal Card." Publisher is unknown.*

carriage house was the Studebaker auto agency and repair shop of Samuel K. Landis.

A second chateausque home in Lancaster is also on N. Duke Street at #700, the Keiper-Long mansion. It was built in 1907-08 by Henry Keiper, inventor, and owner of Champion Blower and Forge Co. It later served as a store and then a business and fortunately went through only minor exterior changes.

*I. Steinfeldt published #A-44621. Curteich printed the color PC in 1913 soon after the home was built on N. Duke St.*



*H. B. Keiper's Residence, Lancaster, Pa.*

*#33755 is a color card publ. by I. Steinfeld, printed by Commercial Colortype Corp. The building's entrance is on Orange St. The new addition will extend to and include the carriage house (circled) at N. Cherry St.*

\*French architecture brought to the USA during the Victorian Era; it includes carved stone, stained glass, finials, exaggerated gables, towers and wall dormers. In the case of the Hamilton Club building, the 3-story, 5-bay stone home has a high hipped roof with cross gables; polygonal corner tower and round tower each with tent roofs, stained glass windows on the first floor, gabled entry portico and stone sculptural ornamentation.



## Member's Collection Dates from 1947

*Note: Your editor has, for 16 years, avoided personal interviews. They're not his "cup of tea." This article was meant to focus on a mode of our hobby considered by most to be passé. If it appears to be a biographical sketch, this was not the original intent.*

When he was in the sixth grade, Dick Pendergrast assembled a Show 'n Tell exhibit. He used a handful of postcards. The father of a classmate invited young Dick to look at his extensive collection. The pre-teen was amazed to see such a vast array of subjects – all on postcards!

The father was about to specialize in views of the Hudson River Valley and was in the midst of down-sizing his hoard. He wanted nothing better than to encourage his daughter's classmate to become acquainted with the hobby, and so, to the young boy's astonishment, the gentleman told him Dick he *should pick out any cards he'd like for himself!*

To guide him towards a specialty, Dick was given a large grouping of 1907 Jamestown Exposition cards – in fact, the complete set! He still prizes that otherwise hard-to-assemble set. It became the progenitor of an extensive collection of expo cards that he still adds to from time to time.

The gentleman also acquainted young Pendergrast with a postcard club magazine to which he subscribed. The *Post Card Collectors Magazine and Gazette* was a bi-monthly oscillating between 8 and 12 pages. Among tidbits of info such as checklists and the latest PC issues, were names of subscribers and what they collected. In those days (1940s and 1950s) 99% of postcard collecting was done through the mail by collector exchanges. Meticulously studying each issue, young Dick's choices focused largely on *where* the exchange collector lived.

By using the letters of the alphabet you were able to tell fellow collectors, in an abbreviated form, your interests: A) all postcard correspondence welcome, B) not open for exchange - will write first, or C) no correspondence desired. The collector would further choose one of these categories: D) view cards exchanged one at a time, E) view cards exchanged several at a time or F) view cards exchanged 10 or more at a time. Additionally one opted for G) foreign view cards preferred and H) U. S. view cards only or X) both foreign and U.S. desired.

The remaining letters of the alphabet represented different fields of collecting interest, such as capitols, scenes, large letters, bridges, comic philatelic, animals, etc. Dick remembers his "initials" were ADILNWX which told collector, in code: A = all PC correspondence welcome; D = I'll exchange one at a time; and that he liked I = capitols and public buildings, L = historic views, N = industries and railroads, U = general topics and X = both foreign and U. S.

Like many of us, his initial interests soon expanded. He still liked expositions, of course, but to them he remembers adding lighthouses, holidays, trains and trolleys, college girls, the San Francisco

**From a recent Lancaster New Era, here's a good piece of information to remember in dating local postcards** – On April 9, 1930, city officials gave tentative approval to turn a number of city thoroughfares into one-way streets. Traffic was to travel east on King Street, west on Orange Street, north on Queen Street and south on Duke Street.

## Cover Cards

Dottie Ryan, in *Picture Postcards of the United States* (two copies in the LCPC library), notes that the most beautiful Thanksgiving cards were those published by John Winsch and Samuel Schmucker's Indian girls and Puritan maidens are the most beautiful of the Winsch Thanksgiving greetings. Nearly everyone who's seen the cards agrees with Dottie.

Our November cover has examples of Schmucker's Thanksgiving girls.

**Top Row:** a 1912 issue on the left; golden orb moons highlight our Indian maidens in 1910 issues in the center and on the right.

**Center Row:** a 1911 issue

**Bottom Row:** two more golden orbs in the 1912 issues on the left and right; a 1914 miniature is in the center.

Unfortunately, the Winsch-Schmucker was a short-lived combo.

earthquake and Tuck state capitols, among others. Several of these he says are still "active categories."

Most PCs exchanged in the 1940s and 1950s were current cards - linens or chromes - available at minimum cost from the sender's hometown or home state. (To this day, Dick catalogs most of his collection by states.) Asking for or expecting old postcards was not out of the question, but they were not eagerly sought after in the early exchange clubs.

Dick can still recall particular collectors from Japan, the Philippines, Germany and Sweden. At one time he was corresponding with as many as 50 people at one time. Over the years he believes he got to know 200 to 250 PC collectors. Only one correspondent from those days still contacts him from time to time. Ruth Schultz from Jackson, Maine, most recently sent him four continentals of her state, including a multi-view featuring Maine's lighthouses.

While he collected as a teenager, Dick believes, in retrospect, that most exchanges were from adults. By the time he was off to college in 1953, postcard exchanges went to the back burner. There were more important subjects to be mastered. Fortunately for him, his collection remained intact.

Following college, a steady job and marriage, he was able to get back to postcards and, in the 1970s Dick joined the Houston Post Card Club and then the Greater Houston Post Card Society. He played an active role in both clubs.

When he and Doris moved to York it was a natural that he joined the York Post Card Club in 1993. For YPCC he served in many capacities including director, show chairman, editor and president. Dick joined LCPC in August, 1997 and Doris joined soon after. We feel honored to have them with us.

All collectors find Space to be a problem and Dick is no exception. In recent months he's taken several boxes gleaned from "categories no longer collected" to the York meetings. Maybe we'll soon have the chance to browse similar boxes at our Lancaster meetings.

We've given you a glimpse into the postcard collecting world of 60 years ago as well as a brief sketch of LCPC's current vice president. Under Dick's able leadership and with your help, we're certain LCPC's success will continue.

I'd like to offer a personal "Thank You" to Dick and Doris for allowing me my visit to their lovely home.



Editor's Note: The club's librarian is Carol Giona. She has offered to write a column about books in the LCPC library for *The Card*. If you would like to borrow the book reviewed here, call Carol at 1-717-464-1410. She will contact a member of the Library Team and have the book available at the next meeting.

### Library Highlight

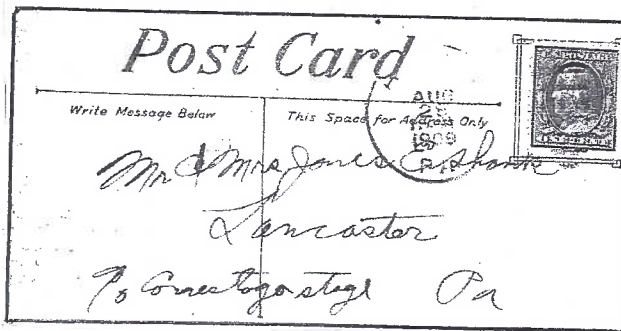
#### PUBLISHERS' TRADEMARKS IDENTIFIED

By Walter E. Corson

(Edited by James Lewis Lowe)

One of the little-known pleasures of deltiology involves not the pictures on postcards, but what appears on the backs of the cards. In some cases it may be cancellations, stamps, printed or handwritten messages, or autographs. This book focuses on publishers' trademarks. Broadly included in this category are styles of designators, i.e., terms such as "Private Mailing Card," "Picture Post Card," and "Post Card." These artistic creations were chosen by publishers to distinguish their work from others, and some have become works of art in themselves. They often reflect the character, purpose, and philosophy of their creators.

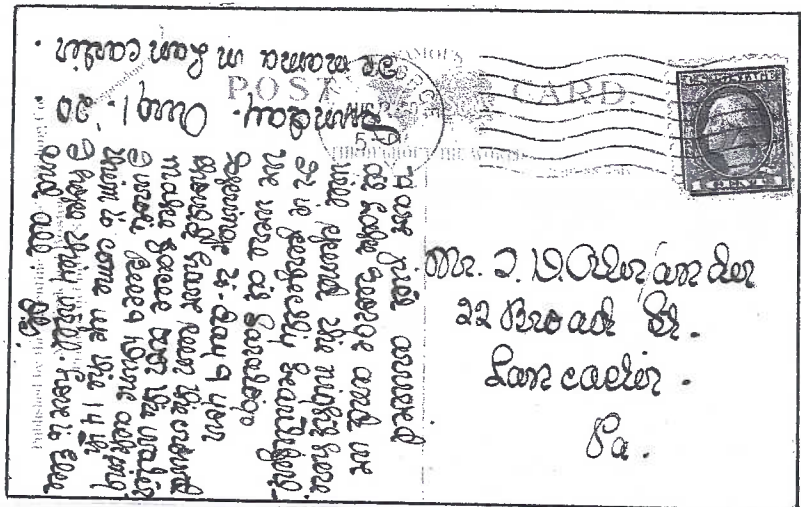
This book will be of interest to those who would like to know more about their postcards and the publishers who produced them. If you are interested in borrowing it, please call Carol Giona.



### Postcard Oddities

Left - Hershey bar-size PC was mailed in 1909 to the Shanks c/o Conestoga Stage. A stage carried mail and passengers from Lanc. to Conestoga Center Mon. to Sat. at 3 PM, returning to Lanc. at 9 AM, as late as 1927.

Below - Odd but readable penmanship on 1920 card from Lake George, to Mr. Alexander.



Lot 546

### ESTATE AUCTION

THE EXTENSIVE POSTCARD COLLECTION OF JOHN M. CORLISS

800+ INDIVIDUAL & DEALER STOCK LOTS

WEDNESDAY, DECEMBER 7, 2005 at 2:00PM

-to be held on the premises of-

MD STATE FAIRGROUNDS - VISTA ROOM  
2200 York Rd, Timonium, MD 21093



Lot 337



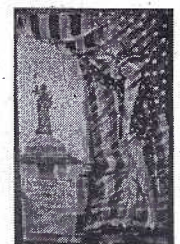
Lot 127



Lot 197



Lot 404



Lot 902



Lot 906

Paid Adv.

**Isennock Auction**  
SERVICES, INC.

410-557-8052

[www.isennockauction.com](http://www.isennockauction.com)

White Hall, MD 21161

[info@isennockauction.com](mailto:info@isennockauction.com)



Lot 338



Lot 356



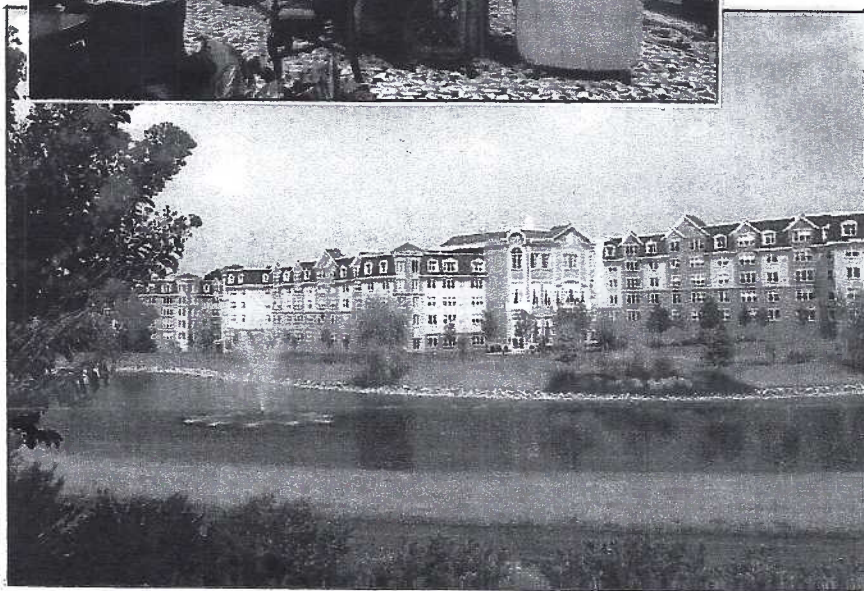
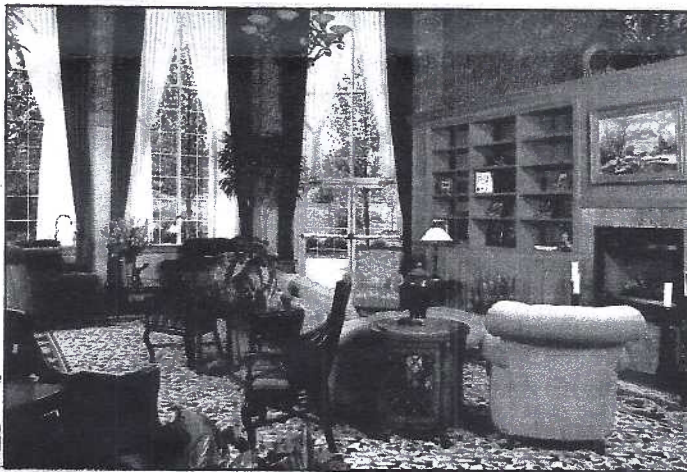
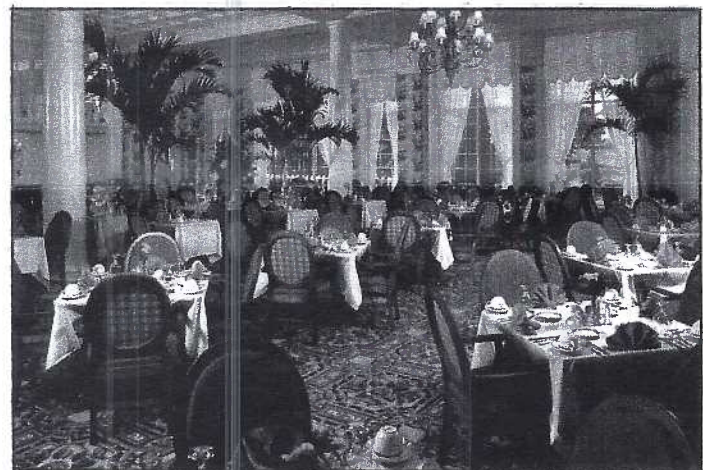
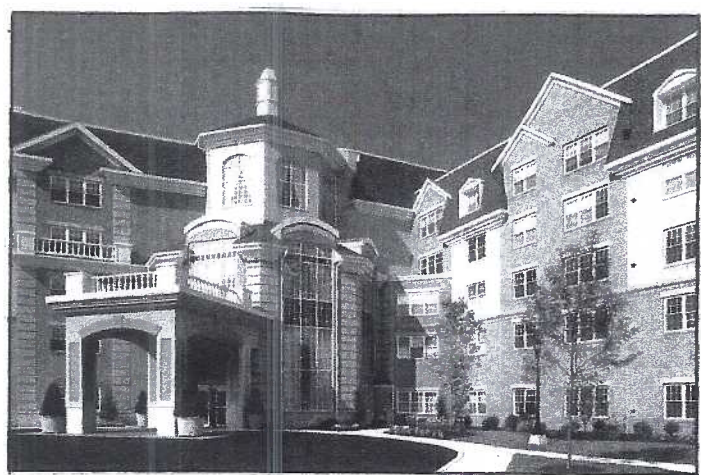
## New Issue from Willow Valley

### Spring Run at Willow Valley – Set of Four

Dick Pendergrast kindly gave your editor a set of the most recent Willow Valley Retirement Community's postcards. They feature Spring Run, a stately 5-storied, 3-building addition overlooking the southern side of the retirement complex.

Shown here are the entrance, library and dining room of one building, as well as an overview of Spring Run. Dick says that, in addition to the main library, each floor has its own reading alcove and library assembled by that floor's residents.

The earliest dated postcards we've seen of Willow Valley Retirement Community are 1994. The total number of different views we've seen is 17 but this is surely not a confirmed number. Some cards are not dated; none are numbered. Would an LCPC member living at WV accept the challenge of completing a checklist of all cards issued? We could share it with readers of *The Card*.



### **We Extend Our Sympathy**

The club's sympathy is extended to Ray Dennis whose mother passed away in mid October.

Miriam Bishop recently took residence in the Health Center of the Masonic Village at Elizabethtown. We pray for her health. Of course we will continue to enjoy seeing Dick at our meetings as a faithful dealer/member. Dick will have his 2006 Entertainment books at the Nov. and Dec. meetings only. They are discounted to just \$21.

### **Mural of Painted Postcards**

#### History Depicted of Maine Quarry

Fox Island Granite is the collective name of a much prized product of southern Maine. It takes its name from the largest of several islands in the Penobscot River. Nearly a dozen quarries were once involved in developing the heritage of the neighborhood.

To retell the story of an industry that thrived on Vinalhaven and its smaller neighboring islands, the Tibb's Restaurant in Vinalhaven commissioned a young artist and her husband. Pamela Grumbach believed the story could best be told using old postcards and so colorful murals were painted on the walls flanking an enormous granite fireplace – from floor to ceiling. The murals include views, portraits and even back-of-the-card messages painted as a giant montage.

Response has been overwhelming and the building's owner, Greg Nelson, has commissioned Pamela and James Grumbach to assemble a second postcard mural next year on the community's present industry, fishing.

The above story was sent by LCPC members #100 and #101, Jean and Lew Frank, who discovered it in *Inter-Island News*, a local newspaper.

Do you think this novel idea might find its way into a similar project here in Lancaster County?

More clues for answers to the LCPC President Crossword Puzzle.

Jim WARD '90	Earl CARVER '91
Don DAVIS '93	Dorothy FRY '92
Walt MOWRER '94	Bob KRAMER '95
Walt MOWRER '96	Lewis BECHTOLD '96
Ruth FRANKHOUSER '97	Jim WARD '98
Susan GLASS '99	Walt MOWRER '00
Betty BECK '01	Tom BECK '02
Bryan BENNER '03	Doug MILLIKEN '04
Susan GROMIS '05	

One of two unmarried  
Life-long minister  
Taught in 1-room schools  
Art professor at Milliserville  
Maintained broiler houses  
Avid stamp collector  
Knows about the Blues and Grays  
Life guard at New Holland swimming pool  
(second term)  
Nurse at Lancaster General and PA National Guard  
(second term)  
English and Desktop teacher  
One of our world travelers  
Graduate with degree in horticulture  
Pres. of Optimalists while serving as LCPC Pres.  
Works at High Ind. and Barnstormer Stadium