

THE CARD - Vol. 17, No. 1. Issue 193. January 2006.

Monthly Publication of the Lancaster County Postcard Club, Lancaster, PA.

Enjoying postcards through education and entertainment.

Next Meeting: Mon., January 16, 2006. Farm & Home Center. Buy, sell, trade from 5:30. Meeting at 7 pm.

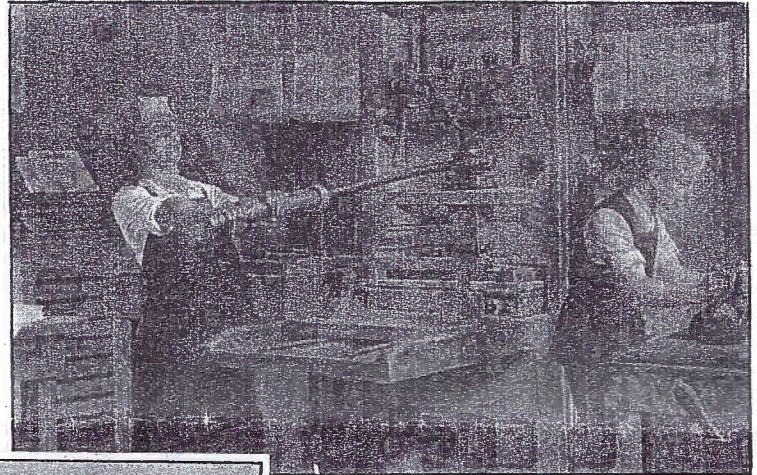
Yearly membership is \$10 (\$5 for each additional member at the same address.)

Make checks payable to LCPC and send to Betty Beck, 11 Cinder Hill Rd., Lititz, PA 17543.

Club website: www.playle.com/clubs/lancaster or Google search: lancaster county postcard club.



Franklin the boy selling ballads on the streets of Boston. First of ten historic murals at the Franklin Institute.



Franklin the apprentice printer. Second of ten historic murals at the Franklin Institute.

Happy 300th Ben!

Benj. Franklin
by Jos. S.
Duplessis
about 1784.
PC mailed
Sep. 29, 1959.

Franklin the librarian. Third of ten historic murals at the Franklin Institute.

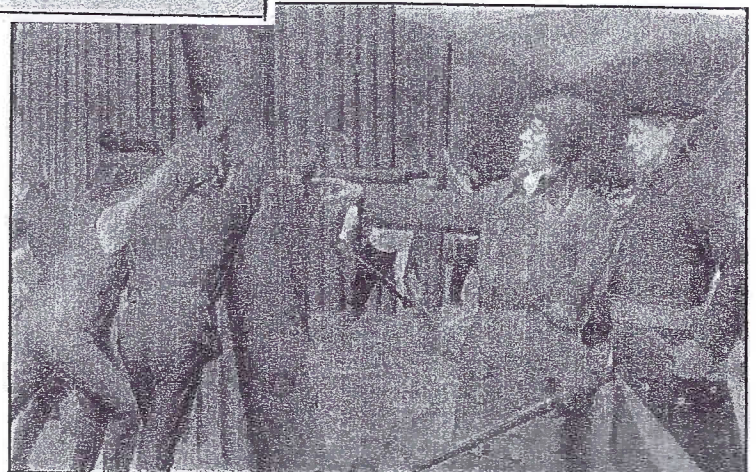
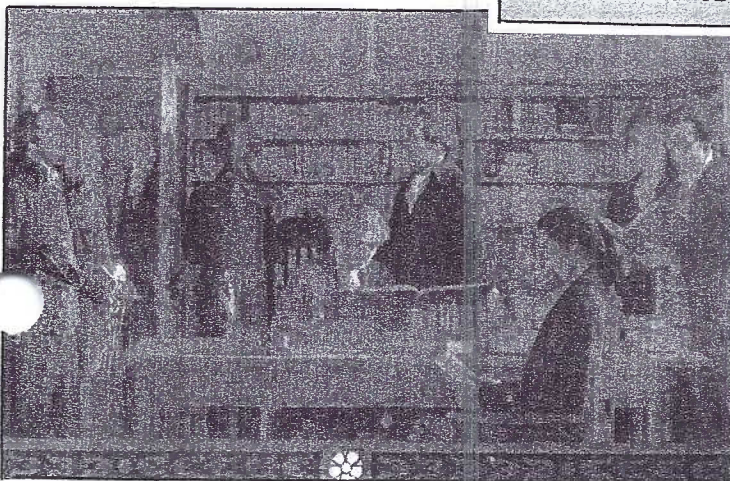


JANUARY 17, 1956
250th anniversary of the birth, in Boston,
of
Benjamin Franklin
whose money built the
FRANKLIN TECHNICAL INSTITUTE

Happy 16th LCPC!

Birthday Cake
For both
January 16, 2006

Franklin the army engineer. Fourth of ten historic murals at the Franklin Institute



Lancaster City Churches Found on Postcards

Compiled by Bryan Benner and Jim Ward.

*Churches are listed by denomination, generally as the names appeared on the postcards.
Addresses have been added for clarification.*

CATHOLIC

Sacred Heart Catholic Church 233 Nevin St.
St. Anne's Catholic Church SE corner N. Duke and E. Liberty Sts.
St. Anthony's Catholic Church NE corner E. Orange and N. Ann Sts.
St. Joseph(s) Catholic Church 418-438 St. Joseph St.
St. Mary's of the Assumption Catholic Church SE corner S. Prince and W. Vine Sts.
St. Phillip the Apostle Catholic Church 2111 Millersville Pike

EPISCOPAL

St. James' (Protestant) Episcopal Church NE cor. N. Duke and E. Orange Sts.,
St. John's (Free) Episcopal Church NW corner W. Chestnut and N. Mulberry Sts.

LUTHERAN

Evangelical Lutheran Church of the Advent 965 E. Orange St.
Christ Evangelical Lutheran Church SE corner Manor and W. Strawberry Sts.
Emmanuel Lutheran Church SE corner W. Walnut and N. Pine Sts.
Gotwald Lutheran Memorial Mission/Church 233 W. James St.
Grace Evangelical Lutheran Church 501-507 N. Queen St.
Mount Calvary Evangelical Lutheran Church SW corner N. Plum and E. Clay Sts.
Redeemer Evangelical Lutheran Church NW corner Sixth and Pearl Sts.
St. John's Lutheran Church 219-21 W. Orange St.
St. Mark's Lutheran Church 541 Pershing Ave.
St. Stephen's Evangelical Lutheran Church SW corner S. Duke and Church Sts.
(Evangelical) Lutheran Church of the Holy Trinity 31 S. Duke St.,
Zion's (Evangelical) Lutheran Church 139 E. Vine St.

METHODIST

Bethany United Methodist Church North side of W. Orange St. near Mulberry (razed July 1982)
First Methodist Episcopal Church NW cor. N. Duke and E. Walnut Sts. **First United Methodist Ch.**
Grand View Heights Community United Methodist Pleasure Rd. and McGrann Blvd.
St. Paul's Methodist Episcopal Church 203 S. Queen St.

PRESBYTERIAN

Bethany Presbyterian Church 25 N. West End Ave.
First Presbyterian Church SE Corner E. Orange and N. Cherry Sts.
Memorial Presbyterian Church 420 S. Queen St.

REFORMED

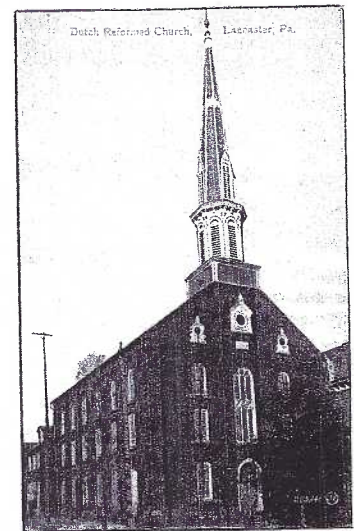
Dutch Reformed Church (St. John's Ger. Reformed Ch.) NE corner W. Orange and N. Mulberry Sts.
Faith Reformed Church SE corner S. Duke and Green Sts.
First Reformed Church SE corner E. Orange and N. Christian Sts.
St. Andrew's Reformed Church NE corner N. Lime and E. New Sts.
St. Luke's Reformed Church NE corner Marietta Ave. and W. Orange St.
St. Paul's Reformed Church NE corner E. Orange and N. Duke Sts.
St. Peter's Reformed Church 816 Buchanan Ave.

UNITED BRETHREN IN CHRIST

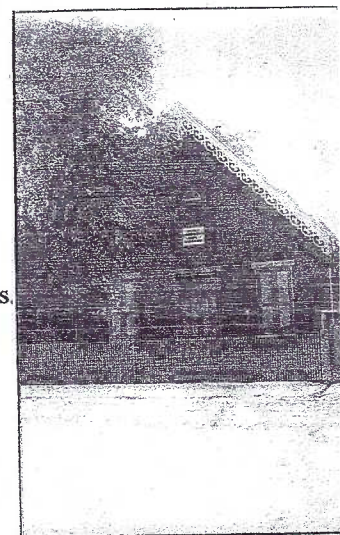
Covenant Church United Brethren in Christ SW corner W. Orange and N. Concord Sts.
Otterbein United Brethren in Christ 739 N. Queen St.

UNITED CHURCH OF CHRIST

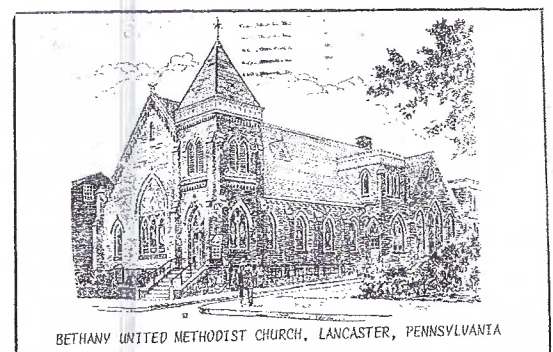
Church of the Apostles United Church of Christ 1850 Marietta Ave
St. Luke's United Church of Christ 719 Marietta Ave.



Dutch Reformed Church



Gotwald Lutheran Memoria



OTHER DENOMINATIONS

Calvary Independent Church NW cor. N. Duke E. Frederick Sts., 1401 Esbenshade Rd. (2 bldgs.)
 Church of Our Father Unitarian 538 W. Chestnut St.
 Church of the Brethren 341 N. Charlotte St., 1601 Sunset Ave. (2 diff. bldgs.)
 Faegleyville (African Methodist Episcopal Zion Church) 38-40 Old W. Clay St.
 First Church of Christ, Scientist 120-124 N. Prince St.
 Grace Conservative Baptist Church 1899 Marietta Ave.
 Grace United Evangelical Church 423 S. Shippen St.
 Hellenic Orthodox Church of the Annunciation 64 Hershey Ave
 Moravian Church SW corner W. Orange and N. Market Sts.
 Temple Shaarai Shomayim NW corner N. Duke and E. James Sts.
 Multiview w/five churches - St. Paul's Reformed, First M. E. Church, Grace Lutheran Church,
 St. John's Evangelical Lutheran Church and Trinity Lutheran Church.

Other church-related buildings on postcards.

Calvary Fellowship Homes, Inc. 502 Elizabeth Drive
 Chapel/Dominican Sisters 1834 Lititz Pike
 St. Francis Convent 417 Poplar St.
 St. James' Parish House 119 N. Duke St.
 St. John's (Episcopal) Parish 319 W. Chestnut St.
 Missionary Home of the Reformed Church 400 block College Ave.
 Stough Evangelistic Campaign in Penn Iron Works Bldg. 400 block E. Chestnut & Walnuts Sts.
 Water Street Mission of the Holiness Christian Church 18 and 20 N. Water St.

The back of an envelope mailed Dec. 12, 1913 from Lancaster to a resident of Zion Home, Lititz, shows
 "How to visit some of the principal Churches of Lancaster City by the Street Car (trolley) Lines"

How to visit some of the principal Churches of Lancaster City by the Street Car Lines

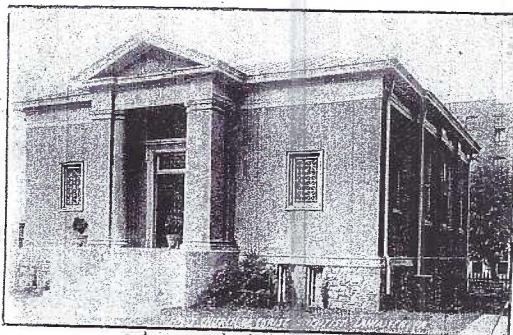
Take Car Sign	Take Car Sign
St. Paul Afc. M. E. 36-38 W. Clay	St. Paul's Methodist Episcopal 215 S. Queen
Ebenezer Baptist Ch. 420 Locust st.	West. Meth. Episcopal Ch. 238-40 Lan. av.
Brethren Baptist Ch. 341 Charlotte st.	Broad st. Meth. Ep. Ch. E. Ches. & Broad st.
Olivet Baptist Ch. 137 E. Chestnut st.	Moravian Ch. W. Orange & Market st.
Chr. & Missionary Alliance 237 W. Chestnut.	Bethany Pres. Ch. W. End av nr Columbia av.
Ch. of Christ (Disciples) 240 W. King, in bd.	First Pres. Ch. E. Orange & Christian st.
Church of God, Bethel, W. Orange and Prince	Memorial Pres. Ch. S. Queen & W. Andrew st.
Hol. Chr. church E. Ross near N. Ship. in bd.	
St. James' Ep. Ch. E. Orange & N. Duke, in bd.	
St. John's Ep. Ch. W. Ches. & Mulb'y M. A. W B, C, M V	
Atonement Refd. Ep. Ch. Locust & S. Lime st.	
Brethren in Christ 633 Manor st.	
Reformed Mennonite 127 E. James st.	
Old Mennonite E. Chestnut & Sherman st.	
Old Mennonite S. S. Mission, 112 E. Vine st.	
First Methodist Ep. Ch., N. Duke & Walnut	

HOLINESS CHRISTIAN CHURCH, East Ross St. near N. Shippen St., Rev. Levi L. Bixler, preacher in charge
 Sunday School 9:30 A. M., Preaching or Experience Meeting at 11 A. M., Young Peoples Praise and Prayer Service at 6:30 P. M., Preaching and Revival Services 7:30 P. M., Prayer Meetings and Class Meetings, Tuesday and Thursday Evenings at 7:30 P. M.

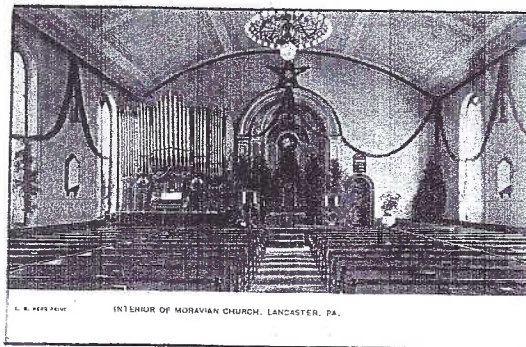
Evangelical Ch., Pearl & 2nd st.	C, W B, M A	Faith Reformed Ch., S. Duke & Green	R S, 7 W
Orthodox Hebrew Synagogue, 514 Chester st.	7 W	First Reformed Ch., E. Orange & Christian st.	Central
Temple Sh. Sh. - Hebrew, N. Duke & James st.	N D	St. Andrews Ref. ch., E. New & Lime st.	L M, N D
Ch. Ev. Lu. W. Strawb'y & Man. in bd. C, M V, W B, C A		St. John's [Ger.] Ref. ch., W. Orange & Mulberry	Central
Advent Ev. Lutheran, 965 E. Orange st.	C V, E B	St. Luke's Ref. ch., Mar. av. & W. Orange C, M A, W B	
Emmanuel Ev. Luth. Pine & Walnut	M A	St. Paul's Ref. ch., E. Orange & N. Duke st.	Central
Gotwald Ev. Lu. Mission 233 W. James st.	C A, M A	St. Anthony's Rom. Cath., E. orange & Ann st. E B, C V	
Grace Ev. Lu. N. Queen & E. James st in bd.	C A, N D	St. Joseph's Rom. Cath., 418-38 St. Joseph st.	L F
Holy Trinity Ev. Lu., S. Duke & Milfin st	L, M, 7 W	St. Mary's Rom. Cath., W. Vine & S. Pri. ce	Central
Mt. Calvary Ev. Lu., N. Plum & Clay to N. Hol. pike R S		Sacred Heart R m. Cath., 223 Nevin st.	C, C A, W B
St. John's Ev. Luth., W. Orange & Arch st.	Central	Ch. of Our Father, Unit., 586 W Chestnut,	C, C A, W B
St. Mark's Ev. Lu., Freiburg betw. Gr. & Dau.	R S, 7 W	Bethany U. Evangelical, 325 W. Orange st.	M V
St. Stephens Ev. Lu., S. Duke & church st.	R S, 7 W	Grace U. Evangelical, S. Shippen near Locust st.	
Zion [German] Ev. Luth. 139 E. Vine st.	Central	Covenant U. B., W. Orange & Concord,	C, C A,
College Chapel, F & M College Bldg.	C A	Otterbein Chapel U. B., Clay near N. Duke st.	

Some church buildings have been razed. We have chosen to show several of these -

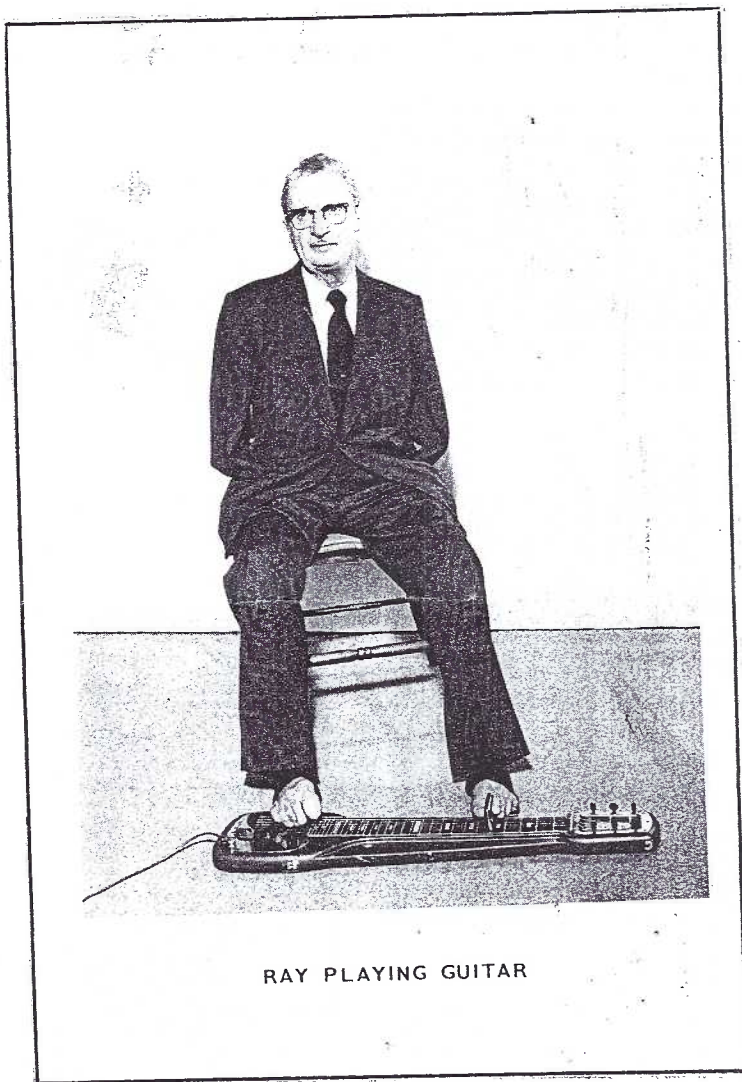
Dutch Reformed Church, Gotwald Lutheran Memorial Mission/Church, Bethany United Methodist Church, First Church of Christ, Scientist, and the Moravian Church.



First Church of Christ, Scientist



Moravian Church



RAY PLAYING GUITAR

POSTCARD FOLDER – ILLUSTRATIONS

The exterior of the 1940's folder is shown to the left. The images from this folder were too dark to reproduce.

Ray also had printed another postcard folder in the mid to late 1960's. (An estimate from the clothes and car depicted in the images)

The above photo of Ray playing the guitar and the three photos on the following page are all from the 1960's folder. It also included photos of him plowing his garden on a small tractor and portraits of Ray and his wife Elanor, his son Ronald and family, his son Gary and family, and Ray with his mother and all his brothers and sisters (8)

Ray R. Myers

Lancaster's Hillbilly Musician

Ray Myers (sometimes incorrectly spelled Meyers) was born January 2, 1911 in Lancaster, PA the fifth of nine children. His career as a musician began after the family moved to Allentown, PA where he played trombone. Ray soon purchased a steel guitar and it was that instrument that occupied his musical career throughout his adult life.

Playing at local events – church fairs and amateur talent contests – someone at Lancaster's WGAL radio station heard Ray, was sufficiently impressed, and offered him a weekly radio program. Through this show, Ray's music was heard by Cowboy Loyce, a popular performer on "The Original Jamboree" out of Wheeling, West Virginia. Loyce hired the young man and now Ray played to a national audience of country music.

Live gigs attracted large crowds. People turned out in droves to see and hear Ray play old time music. Right after the show they flocked to the parking lot to watch Ray drive his car. You see, at that time, Ray was the only licensed automobile driver in the U. S. A. born without arms.

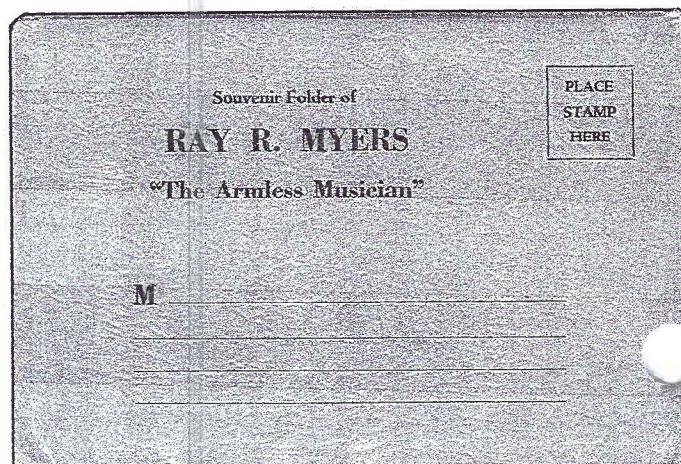
Phenomenal? Maybe, but Ray's daily routine often included sawing wood and driving nails which he did on the job at Lancaster's Trojan Boat Co.

Ray eventually had a daily radio show in the 1950s in Clarksburg, WV. His longevity as a radio personality (where no one could see that he lacked arms) is a testament to his ability to play steel guitar along side Chet Atkins and other notable country stars.

"The Armless Musician", as he was known through his adult life, died in Gordonville, Lancaster County, PA in May 1986.

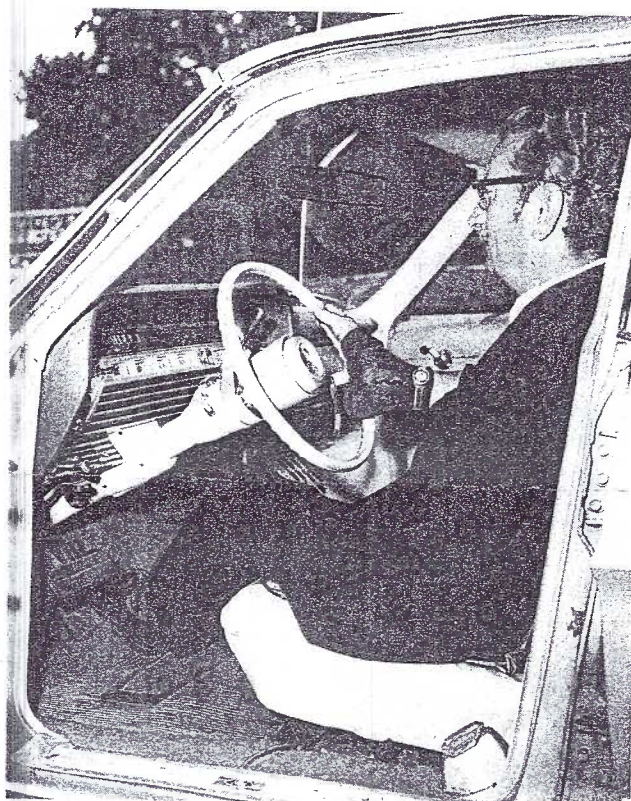
Why mention this Lancaster native in a postcard article? Ray had a Souvenir Folder made in the 1940s that includes nine photos. In addition to one of him and his wife, three show him opening, pouring and drinking a bottle of Coca Cola. Others show him reading a newspaper, playing the guitar, combing his hair, writing a letter, and twisting his foot behind his head.

Even though the photos are not individual postcards, like all postcard folders, it has a stamp box and address lines for mailing. The folder I've seen is autographed by Ray. So is one I found on the Internet. The two signatures show slight variations and are not rubber-stamps.



Ray R. Myers

Ray is showing here what Occupational Therapists today would call Adapting Daily Life Skills. In fact he went beyond daily skills with his musical abilities. Ray was obviously a brave and talented man.



GOING FOR A SPIN

HELP WANTED!

We need help with mailing
The Card! Stuffing envelopes
and applying stamps and address
labels. Please contact Dick
Pendergrast (Pres.) or any Board
Member if you can help.



RAY SAWING WOOD



PLAYING ELECTRIC ORGAN

CLUB PAGE

By Dick Pendergrast

DECEMBER MEETING

Forty five members and their guests were present at the Farm and Home Center on December 19 to take part in our annual Christmas party. As usual, there was more than enough food for everyone and some great desserts. Bryan Benner presented a very informative program on poinsettias on postcards. Elections were held for the new officers for 2006, the results are listed below. Thanks to everyone who brought food for the dinner and also to those who contributed some very interesting door prizes. Everyone present went home with a door prize or some of the table decorations.

Outgoing President Sharon Gromis gave special recognition to Ruth and Harold Moyer for all their work on our Christmas parties and to Jim Ward for his many years of labor producing our monthly newsletter, the Card.

JANUARY PROGRAM

The program for January is **the Number Six**. Following our tradition of prior years, this subject is chosen because the year is 2006. Everyone is encouraged to bring a single card that somehow relates to the number 6 and to talk briefly about their card while it is shown on the projector.

The monthly competition subject for January will be **Wintertime**, a single card.

OFFICERS FOR 2006

Officers elected for 2006 were:

President – Dick Pendergrast

Vice President – Al Schaub

Secretary – Gisela Withers

Treasurer – Barbara Mowrer

Directors 2005-2006 – Carol Giona, Jere Greider, Gisela Withers

Directors 2006-2007 – Bryan Benner, Sharon Gromis, Jim Ward

Monthly Competition December

The subject was Angels

First Place – Walter Mowrer – A Joyful Christmas

Second Place – Jere Greider – Charity

Third place – Harold Moyer – A Guardian Angel

Honorable Mentions

Bryan Benner – Angel in a Star (W/Poinsettia)

Ruth Moyer – The Glorious Song

Marie Schurz – Angel playing with Child

WELCOME NEW MEMBERS

#749 **Glenn Morrison**, 47 Pumping Station Rd. #R,
Quarryville, PA 17566, (717) 786-3298. Glenn collects
Lancaster County.

#750 **Henry Bitler**, P.O. Box 8023, Lancaster, PA 17604-8023, henryB55@earthlink.com. Henry collects trolley cars, Terre Hill and Ephrata.

2006 DUES

We remind you that our dues are payable by March 31 each year. If you would like to pay your 2006 dues now, send a check made out to LCPC to Betty Beck, 11 Cinder Hill Road, Lititz, PA 17543. Yearly dues are \$10 (\$5 for each additional member at the same address).

