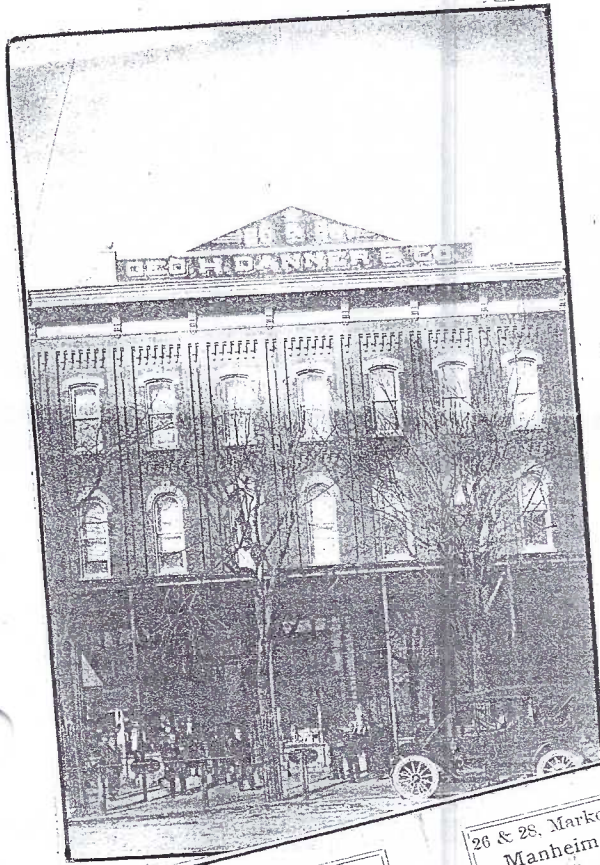


**THE CARD – Vol. 18, No. 7 Issue 211 July 2007**  
**Monthly Publication of the Lancaster County Postcard Club, Lancaster, PA.**  
 Next Meeting: Mon. July 16, 2007. Farm & Home Center. Buy, Sell, Trade 5:30pm, Meeting 7:00pm  
 Yearly membership is \$10 (\$5 for each additional member at the same address.)  
 Membership chair: Betty Beck 11 Cinder Hill Rd. Lititz, PA 17543  
 Club/editors address: LCPC c/o Bryan Benner 127 E. Clay St. Lancaster, PA 17602  
 Club website: [www.playle.com/clubs/lancastr](http://www.playle.com/clubs/lancastr) or Google search: Lancaster County Postcard Club



**George H. Danner  
of Manheim, Pa.**



**What we Guarantee for the Dress  
Goods of Our Manufacture.**

To be made from the very best material, by skillful workmen, with the latest and most approved machinery, and to be the cheapest goods in the market when service is considered.

Are so thoroughly finished that they can be worn in damp weather or a shower, without fear of being ruined by curling or shrinking.

The manufacturing, dyeing and finishing is done in such a manner, that the goods can be washed if desired, without the least injury to the fabric.

Our goods are wool dyed, and colors as fast as the purest dyes, and greatest care and skill can make them.

Goods show just what they are and will be until worn out, as there is no weighting, stiffening or artificial lustre used to increase the weight or finish; as is the case with a large class of goods in the market, but which disappears after a few days' service.

As manufacturers we have taken great pains to supply an article in every way reliable, and unsurpassed by similar goods, either foreign or domestic, and would respectfully ask an examination of the various styles and shades to be found on sale by merchants who are agents for the goods.

All goods of our manufacture should bear the name and trade mark of  
**Broadhead Worsted Mills,**  
 Jamestown, N. Y.

26 & 28, Market Square, 1888  
 Manheim, Pa.  
 Bought of  
**Geo. H. Danner & Co.,**  
 Dealers in Staple and Fancy  
 Dry Goods, Groceries, Queensware, Notions,  
 Boots, Shoes, Etc.  
 Assortment of the genuine Broadhead Dress Goods in all  
 the latest Novelties, new and desirable Colorings  
 Just received: call and examine.

*50 pieces 13/8*  
*12 pieces 3/8*

*Entered*



*George S. Danner,*  
*Manheim,*  
*Pennsylvania*



## George H. Danner of Manheim, Pa.

By Bryan S. Benner

The Danner Family had a long history in Manheim, Pa. From the 1780's to the 1990's members of this family lived in Manheim. George H. Danner is probably the most prominent member and was born Oct. 10, 1834.

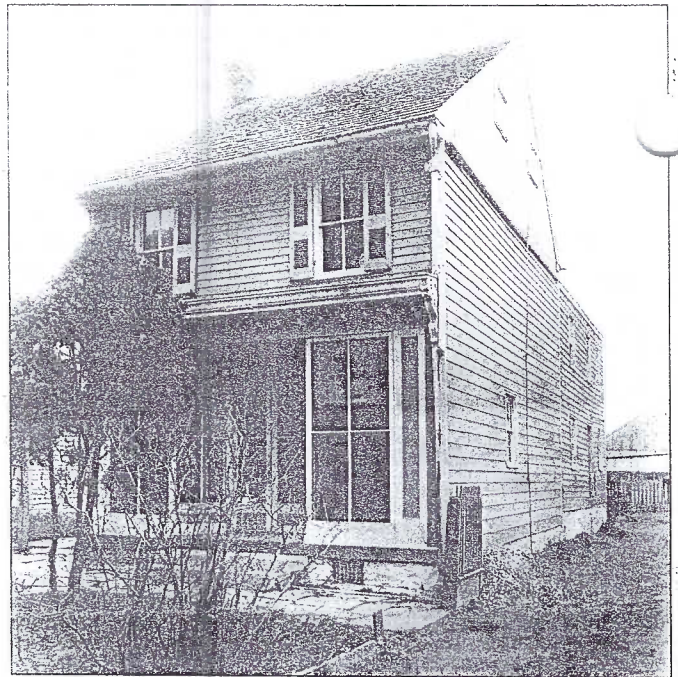
In the early 1860's he built a small general store on Market Square. In 1867, George married Serena Weidler. They lived on Market Square and had no children. In 1881 the larger three-story brick building was built to house the store and his large antique collection. His collection of antiques was opened to the public as a museum on Thursdays for many years. It featured many local items with Pennsylvania German history.

George's brother Aaron worked in the store and managed the shoe department. As a hobby he wrote poetry that often appeared in the *Manheim Sentinel*. His large brick house stood on South Main Street and was torn down in 1935 to build the Post Office.

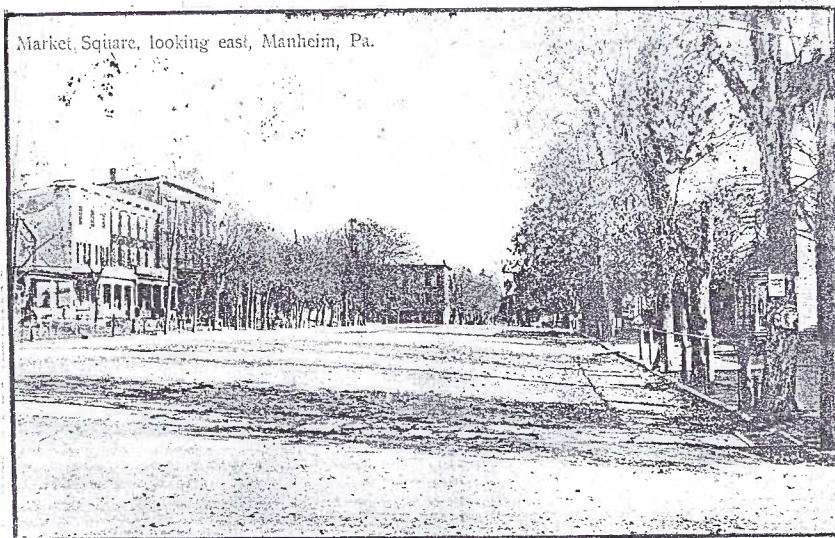
George died in 1917 and the store was run by the family until 1941. The store was used for various retail uses until 1983 when Jacob H. Ruhl Insurance bought the building and remodeled it for their offices. The Museum collection was sold to Milton Hershey in 1935 to help pay for the erection of the Danner Retirement Home, which was named in honor of George's parents, Daniel and Elizabeth. It was a provision of George's will that it be built.

**Right:** Back Cover picture, Geo. Danner & Co. Tally sheet, 1888.

**Below:** Hand Colored Postcard, Pub. By American Post Card Co., Lancaster, Pa., Made in Germany, Postmarked 1908, Shows square with Danner building on the left.



**Above:** Photo (not a postcard) of original Danner general store built in 1860. In 1881 the current three-story brick store was built, and later the frame building pictured here was moved to the back of the property.



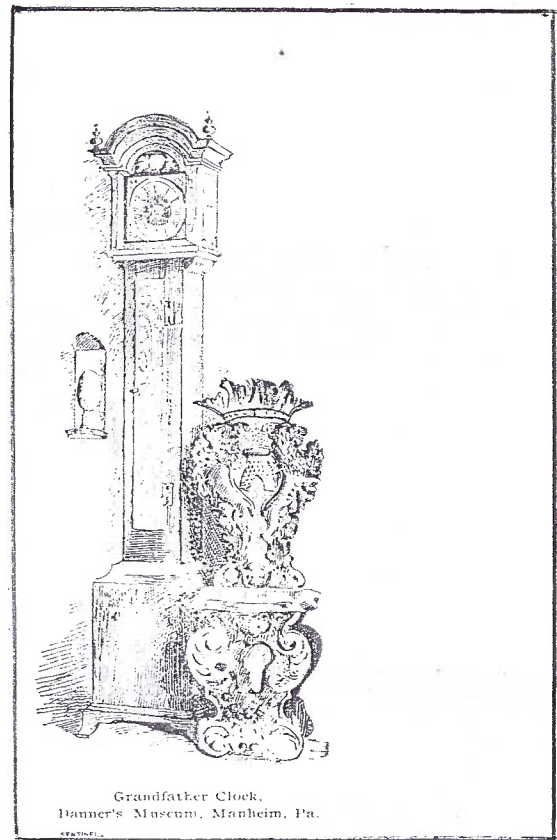


Milton Hershey had founded his museum in 1933 with the purchase of a collection of Native American artifacts. With the purchase of George Danner's collection he added items that were of historical importance in Central Pennsylvania. In 1938 the museum moved to its current location beside Hershey Park in Hershey, PA and you can still see many of the items from Danner's collection today if you visit the museum.

**Top left:** Grandfather Clock, Danner's Museum, Manheim, Pa., Undivided back postcard, marked 'Sentinel' on front corner (of the *Manheim Sentinel*, a newspaper at the time, I'd attribute it to)

**Left middle:** Trade Card for McNeil's Pain Exterminator and Geo. Danner & Co.

**Bottom:** Photos (not postcards) of the Danner building at the turn of the 20<sup>th</sup> century and as it looks today as Jacob H. Ruhl Insurance.



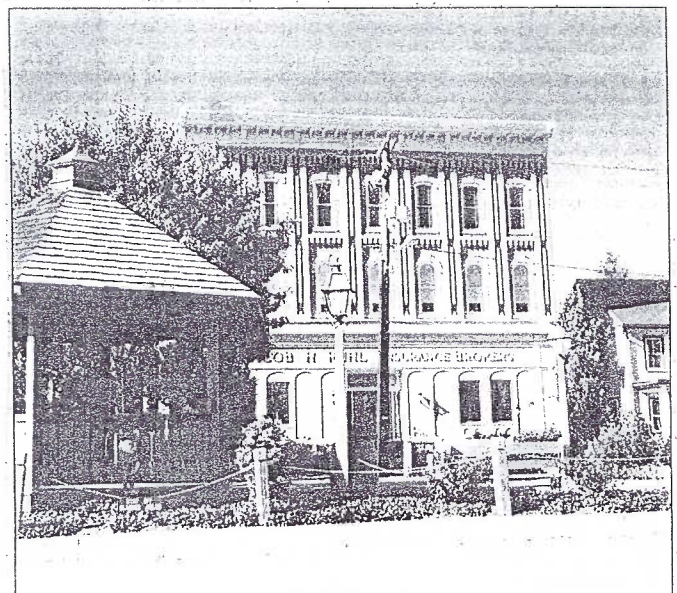
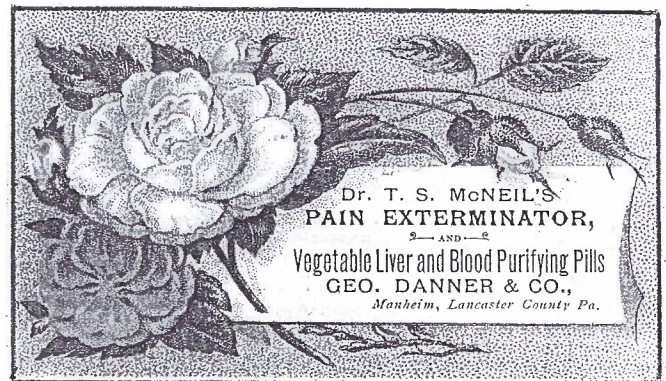
**About the Cover:**

**Left top:** Real Photo Postcard, CyKo Photo Paper, divided back, unused, Geo. H. Danner & Co., 26&28 Market Square, Manheim, PA.

**Left bottom:** Store Tally Sheet, 1888, printed as promotional for Broadhead Worsted Mills, Geo. H. Danner & Co.

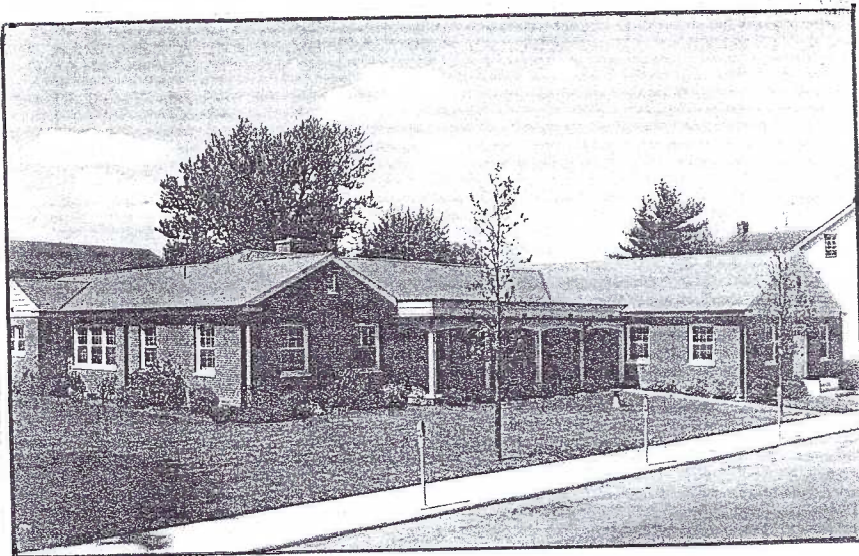
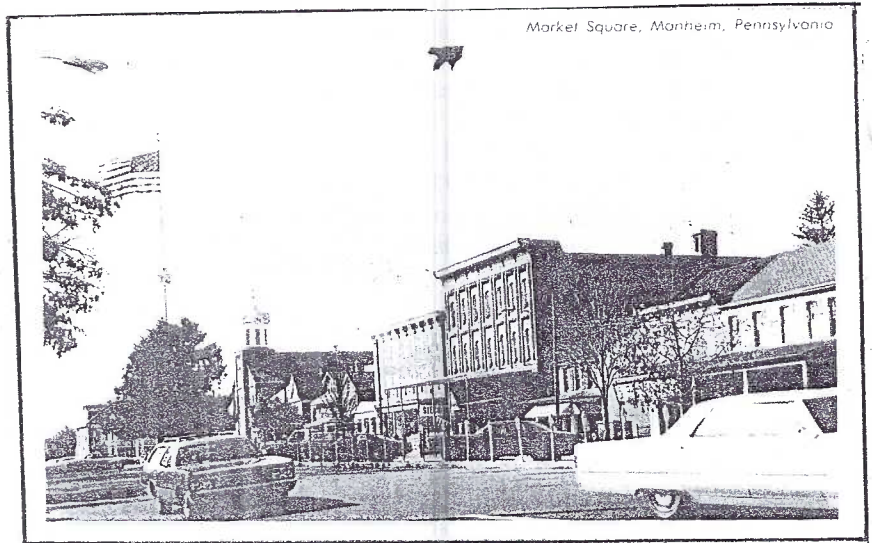
**Top right:** Store Tally Sheet Cover (above), 1888, featuring a woman dressed in clothing made of their cloth.

**Bottom right:** Envelope, George D. Danner nephew of Geo. H. Danner, an engineer, borough surveyor and magistrate.



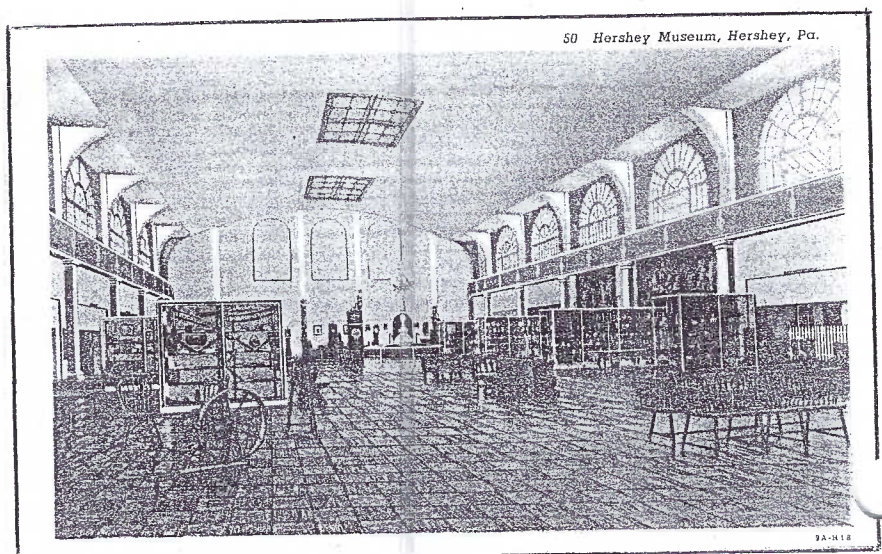


**Right:** 1960's black & white postcard, Merrimack Postcard, West Suffield, Conn., unused, showing Danner Building on Market Square



**Left:** Photochrome postcard, photo by 'Mosemann Studio, Manheim, Pa., Daniel & Elizabeth Danner Home, Ferdinand and S. Charlotte Streets, Manheim, Pa. 'Built in 1953 in memory of Daniel and Elizabeth Danner with funds provided by their son George H. Danner.'

**Right:** Hershey Museum, Hershey, Pa., Linen Postcard, by Curteich. Caption reads 'The Hershey Museum exhibits the collection of George H. Danner, late of Manheim, Lancaster County, Pa., etc.'



**15th ANNUAL POSTCARD EXPO  
SATURDAY AUGUST 18, 2007  
UPDATE**

**EXPO DISPLAY BOARD CHAIRMAN NEEDED.** Ruth Moyer has done an excellent job as board chairman. This year because of health problems she will not be able to serve. DeDe Schaeffer has agreed to receive the forms but because she is a dealer at the show she will not be able to serve during the show. There is help to setup on Friday the 17th but a chairman is needed to oversee the exhibits on the 18th. The basic duties would be to award the prizes based on the judges results, count the peoples choice votes, keep an eye on the displays, etc. Anyone interested in this position or if you have any questions please call Jere at 285-5872.

**CLUB TABLE & TICKET SALES-**We still need 2 people 12:30- 3:00 and 3:00-5:00.

**NOTE CONTACT CHANGES ON THE EXHIBIT FORM.**

**2007 EXPO EXHIBIT FORM**

Mail or give this form or a duplicate to DeDe Schaeffer, 415 Spencer Ave, Lancaster, PA 17603 or Phone 717-392-3955 on or before August 10, 2007. You are encouraged to enter all four categories. If you intend to use 2 boards (maximum) for any category please note this below. Include your title under the appropriate category.

Judges selected from the dealers on Saturday morning before the show will consider the following criteria:

Postcard Information	1/3
Presentation and Originality	1/3
Condition, Completeness and Rarity	1/3

Exhibit boards should be at the Farm & Home Center by Friday night, August 17th between 6PM and 7 PM. The last possible entry time is Saturday morning, August 18th by 8:00AM. NO EXCEPTIONS!. You may also give your boards to DeDe beforehand if necessary. Do not cover your boards. LCPC will provide each board with a new plastic bag.

1st, 2nd, and 3rd places receive \$15, \$10, and \$5 in each category. Best of Show, chosen from the 1st place exhibits receives \$25 and Peoples Choice chosen by the public's ballots receives \$25. Each Entry receives a specially designed 2007 Expo Award postcard.

I will have an entry in the categories listed below with these titles:

**HOLIDAYS**

**HUMOR**

**LOCAL VIEWS**

**ARTIST SIGNED**

**Member's Name:**

**Phone Number:**

**E-Mail:**



## **CLUB PAGE**

### **BY JERE GREIDER**

**JUNE MEETING-** The June meeting was our annual picnic held at the Heim Estate on Old Chiques Hill Road, Columbia, PA. As always our hosts Barb and Bud Heim went out of their way to make everyone feel welcome. There was a large variety of food and I'm sure no one went away hungry.

Our white elephant sale with many interesting items netted the club \$ 25.75.

Door prize winners

\$1.00 Charlie Schiefer

\$2.00 Sharon Gromis

\$3.00 Doris Pendergrast

The single card topic was most interesting insect ( bug, beetle, butterfly, etc.)

1st place	Jim Ward	Mosquitoes playing checkers
-----------	----------	-----------------------------

2nd place	Jere Greider	Mosquitoes at train station
-----------	--------------	-----------------------------

3rd place	Ruth Moyer	Children, pussy cat and bug
-----------	------------	-----------------------------

The large maple tree in the Heim's back yard provided shade and I think everyone enjoyed the picnic. Thank you Bud and Barb.

**JULY MEETING-**July 16. We are back at the Farm & Home Center. The program will be open mike panel discussion. Members will have a chance to ask the distinguished panel questions about anything relating to postcard collecting.

**July single card topic. Most bizarre vacation site** (not necessarily yours.)

**MEMBER NEWS-**It was announced at the picnic that Ruth Moyer was in the Ephrata Hospital. Get well wishes to Ruth and hope she is on the road to recovery.