

THE CARD VOL.19, NO.7, ISSUE 223, JULY 2008

**MONTHLY PUBLICATION OF THE LANCASTER COUNTY POSTCARD CLUB, LANCASTER, PA
ENJOYING POSTCARDS THROUGH EDUCATION AND ENTERTAINMENT.**

**NEXT MEETING JULY 21, 2008 FARM & HOME CENTER. BUY, SELL, TRADE FROM 5:30 PM MEETING 7:00 PM.
YEARLY MEMBERSHIP IS \$10.00 (\$5.00 FOR EACH ADDITIONAL MEMBER AT SAME ADDRESS.)**

MEMBERSHIP CHAIRMAN RICHARD PENDERGRAST 950 WILLOW LAKES DR., WILLOW STREET, PA 17584

CLUB/TEMPORARY EDITOR'S ADDRESS C/O JERE GREIDER 3724 KENNEL AVE., COLUMBIA, PA 17512

WEBSITE: WWW.PALAYLE.COM/CLUBS/LANCASTER OR GOOGLE SEARCH: LANCASTER COUNTY POSTCARD CLUB.

LCPC MEMBERS ENJOYING FOOD AND FRIENDSHIP AT PICNIC 6/21/2008



Twenty eight members and guests attended the June 21st club picnic. Thanks to Jim Ward for his hospitality and willingness to host our annual picnic. Jim also provided frogs for entertainment. As always there was a large variety of delicious food. If anyone went away hungry it was their own fault. Many door prizes were donated and everyone went home with a prize. Ray Dennis won \$14.00 in the 50/50 drawing.

When Did the U.S. Navy First Get Involved in WWII?

By Al Schaub

As the sun rose the island paradise was experiencing a typical Sunday morning, with a majority of people still asleep including many hundreds of sailors who were sleeping-off their Saturday night on Hotel Street. However, at 7:55 A.M. paradise became a living hell as Japanese planes swooped in to bomb, torpedo, and strafe Oahu. This sneak attack on December 7, 1941, was aptly referred to as "a date which will live in infamy" by President Roosevelt.

In a dramatic manner the postcard in Figure 1 shows several Aichi "Val" dive bombers attacking Battleship Row at Pearl Harbor. Naval losses and damage was great, however, the greatest loss was the battleship, U.S.S. Arizona (BB-39), shown in Figure 2. She exploded at 8:06 A.M. after being hit by a 1,960 pound armor piercing bomb. The explosion resulted in the death of 1,177 sailors and marines, many of whom remain entombed in the remains of the ship that now serves as the Arizona Memorial.

Many people look upon the attack on Pearl Harbor in 1941 as being the U.S. Navy's first involvement in World War II. However, this opinion is not correct. Almost four years to the day prior to the sneak attack on Pearl Harbor the Japanese gave us early warning of their belligerence through hostile action in China.

During the 1930's Japanese expeditionary forces captured and controlled Korea and a large portion of China's coastal region. At that time the U.S. had many business interests and missionaries working in China. By late 1937 conditions were so bad that American citizens were in need of protection and evacuation. A naval ship fulfilling this role was the U.S.S. Panay (PR-5) which is illustrated on the Figure 3 postcard. The Panay was a 191 foot river gunboat that served on the Yangtze River.

While on an evacuation mission on December 12, 1937, the Panay, clearly displaying U.S. colors, was attacked and sunk by Japanese bombers. The attack resulted in four deaths and the wounding of eighteen others. However, the sinking of the Panay was not our only pre-World War II naval loss.

On October 31, 1941, while sailing on convoy duty off the coast of North America, the U.S.S. Reuban James (DD-245), shown in Figure 4, was sunk by the German submarine U-552, with a loss of 115 lives. To be noted is that the Reuban James was honored on a postage stamp in the World War II series (Scott 2559f).

In conclusion, as we continue to honor those people who lost their lives in the sneak attack on Pearl Harbor it is also important to remember and honor those who died from enemy provocation prior to the "date which lives in infamy." It is hopeful that this article and related postcards contributes to this cause.

Some afterthoughts:

- All four postcards used for this article are modern chromes, two of which are continental chromes. As a dealer I see a growing collector acceptance of and interest in chromes. Of special interest and value is their use when, to *tell a story*, older cards are scarce or not available.
- The U.S.S. Panay was one of eight river gunboats that comprised the Yangtze Patrol. For an accurate and entertaining account of life on one of these gunboats watch for a rerun of Sand Pebbles on AMC, TCM, or the digital channels. This 1960's movie starred the late Steve McQueen and was based on a novel written by a man who served on the Yangtze River patrol.
- Some of our Club members are my age or older! Where were you when you first heard about the attack on Pearl Harbor? I was on the floor of our living room, with my parents and grandmother sitting in chairs, all of us listening to the Shadow. How it irritated me, as a seven year old, when the news flash, which I didn't understand, interrupted one of my favorite radio programs!



Figure 1
Japanese "Val" dive bombers attack Battleship Row. Postcard made from a painting by Robert McCall

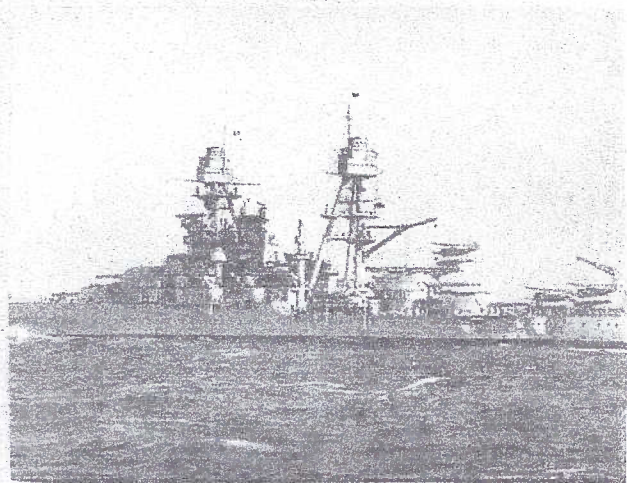


Figure 2
U. S. S. Arizona (BB-39)
Commissioned Oct. 17, 1916

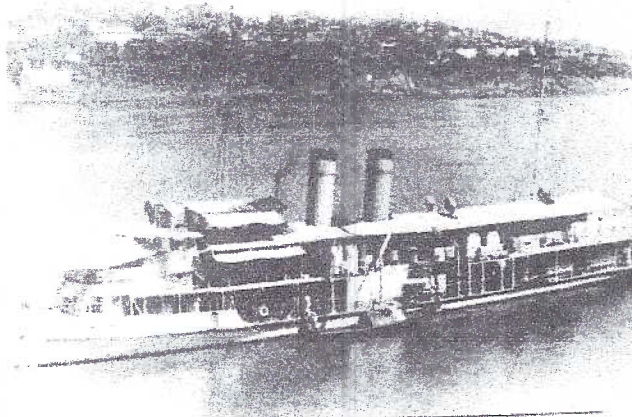


Figure 3
Gunboat U. S. S. Panay (RR-5) Sunk by Japanese bombers on December 12, 1937

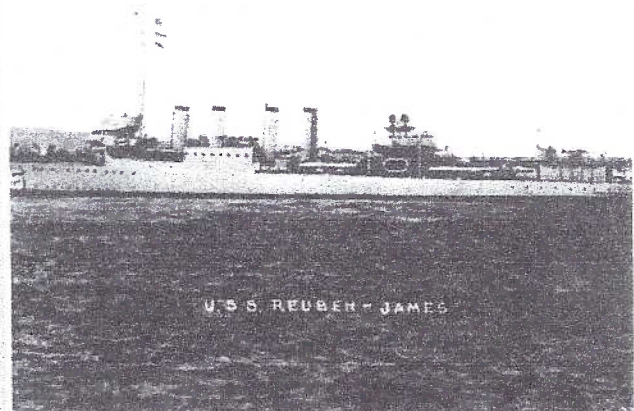


Figure 4
U. S. S. Ruben James (DD-245) Sunk by German U Boat October 31, 1941. Five weeks before U. S. entered WW II

JULY 2008 LCPC NEWS

JUNE CARD COMPETITION

Outdoor Gatherings was the theme for the June picnic meeting.

1st Tom Beck "Beer Drinker on Beach"

Two members tied for second place.

Ellen Crawford "Burling's Meadow Spring Camp near Oxford"

Win Schurz "Wedding Party on Lake"

Honorable mention:

Mary Darrenkamp, Carl Haffly, Dorothy Haffley, Barbara Heim, Bud Heim, Jere Greider, Harold Moyer, Ruth Moyer, Maria Schurz, Jim Ward (2)

POSTCARD EXHIBIT

Lancaster County Historical society 230 N. President Ave. is hosting a postcard exhibit. Wish you Were Here: Postcards from Lancaster County. Admission is free. It can be viewed till August 9th. The hours are Tue, Thurs. 9:30-9:30, Wed, Fri, Sat 9:30-4:30. Closed Sun & Mon.

Gwen Fulmer, Jere Greider, DeDe Schaeffer, Al Schaub and Jim Ward volunteered to help with the display. There are several showcases in the display showing postcard history and club items.

STORAGE SPACE

We now have storage space in the basement of the Farm & Home Center. If you currently have any club property in your home, please bring the items to the July meeting. We would like to keep copies of Volume 2 Windows to Our Past in your home where they can be available for sale. If you have several boxes of books you can bring the extra books to the storage space.

Starting in July we will be using a cart for the library books. The cart will be kept in the storage space and brought up for the meetings. If you are responsible for a section of the library please bring your books to the July meeting.

EXPO UPDATE

Please plan to help make our 16th expo. Successful. Distribute show cards. We still need members to signup to help setup, sell tickets, work at club table, clean up, etc. Make a board for the expo. The exhibit form can be found in this issue.

NOVEMBER AUCTION

Walt Mower is the chairman for our annual November auction. He has the consignment forms. Please see that Walt receives your consignments by the September meeting.

SHOW SCHEDULE

York, PA Club Show July 12

Allentown, PA July 19

Havre De Grace, MD August 1&2

LCPC EXPO August 16

Bridgewater, NJ August 17

Ocean Grove, NJ August 23

If you need additional information about any shows please call 717-413-6882

THANKS to Al Schaub for this month's postcard article

Next meeting July 21

Program - "Fry's Turkey Ranch " by Bill Buckwalter

Single card competition - Summer Sports

2008 EXPO EXHIBIT FORM

Mail or give this form or a duplicate to Bud Heim 783 Old Chickies Rd. Columbia, PA 17512. Phone 717-684-6533 on or before August 9, 2008. You are encouraged to enter all four categories. If you intend to use 2 boards (maximum) for any category please note this below. Include your title under the appropriate category.

Judges selected from the dealers on Saturday morning before the show will consider the following criteria:

Postcard Information	1/3
Presentation and Originality	1/3
Condition, Completeness and Rarity	1/3

Exhibit boards should be at the Farm & Home Center by Friday night, August 15th between 6PM and 7 PM. The last possible entry time is Saturday morning, August 16th by 8:00AM. NO EXCEPTIONS!. You may also give your boards to Bud beforehand if necessary. Do not cover your boards. LCPC will provide each board with a new plastic bag.

1st, 2nd, and 3rd places receive \$15, \$10, and \$5 in each category. Best of Show, chosen from the 1st place exhibits receives \$25 and Peoples Choice chosen by the public's ballots receives \$25. Each Entry receives a specially designed 2008 Expo Award postcard.

I will have an entry in the categories listed below with these titles:

HOLIDAYS

OCCUPATIONS

SMALL TOWNS

TRANSPORTATION

Member's Name:

Phone Number:

E-Mail:

COMPLETED LIST OF DEALERS FOR 2008 EXPO.

AL & JANICE BERNARD
DALE & GRETCHEN BIESECKER
HAROLD BURTON *
COX & STONESEIFER
MARK CLEMENS
ROBERT DISSINGER
LEE DIXON
JEFF EASTLAND *
KAY FEIGHT
KARL HELLMANN *
JERE GREIDER
BOB HOLLOPETER
MIKE MIDDLETON

LEON & DOLORES ROWE
AL SCHAUB
DEDE SCHAEFFER
MARIA SCHURZ
DALE SHAUB
HOWARD STEINBERG
LEIGHTON STOVER
JIM TIGNER
DON WACHTER
JIM WARD
ERNIE WHITE *
MARK WINTERS*

* NEW DEALERS THIS YEAR

POSTCARD TERMS # 4

Postcard Blanks - Area left in the design that needs some add-on decoration which was supplied by the sender.

Postcard Stock - Material which the card is made, can include card stock, leather, wood or cloth.

Postally Used - A postcard showing a cancellation mark.

Private Mailing Card - This term was required by law in the 1898 Act of Congress which qualified these cards for the 1 cent rate. The Law was rescinded in 1901 and the new term Post Card was replaced on the back.

Publisher - Any person or company can be listed as the publisher and many local drug stores and book - news stores are listed as such. Usually the person or company who ordered the cards is considered the publisher. Some companies were also the printer and publisher.

Puzzle Postcards - These cards can include hidden pictures, jigsaw puzzles, or any card which is a puzzle to solve.

Real Photo - Actual photograph printed on photograph paper with a postcard backing.

Repro - Reproductions of old and antique postcards.

Rebus - A puzzle postcard which words, phrases or sentences are represented by pictures.

Sepia - Dark brown color applied to photographs or prints. The cuttlefish's inky secretions provided this color.

Sets and Series - Postcards which belong together and sold as a set either together or individually. Many cards were sold as sets including zodiac signs, local views and other topics.

Silhouette - Popular form of art deco illustrating from the 1920's and 1930's.

Silhouette postcards, many times fantasy scenes show the main subject in black which gives a shadow appearance.

Silk - Postcards with silk fabric applied to the design. Silk postcards can also be entire images printed on silk than attached to a postcard backing.

Size of Postcards:

Standard Size - Approximately 3 1/2 x 5 1/2 inches

Court Size - Usually Foreign and squarish, approximately 3 1/2 x 4 1/2

Continental Size - Approximately 4 x 6 inches, common size for modern cards.

Jumbo or Over Sized - Larger than Continental

Bookmark Cards - Long and narrow approximately 2 1/2 x 5 or 6 inches.

Miniature Size - Approximately 1.2 size of Standard.

Squeakers - Postcards that emit a sound through a small hole on the backside of the card when pressed. These are also considered novelties.

Stamp Box - Outline for stamp which is drawn on card. Many times information or date codes are printed in this area.