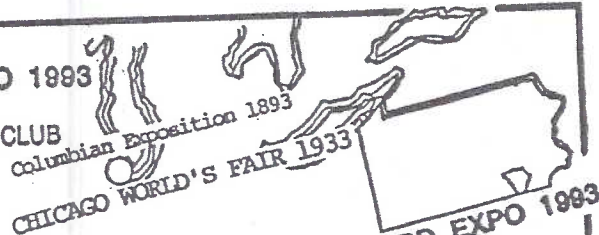


THE CARD VOL.19, NO.8, ISSUE 224 AUGUST 2008
 MONTHLY PUBLICATION OF THE LANCASTER COUNTY POSTCARD CLUB, LANCASTER, PA
 ENJOYING POSTCARDS THROUGH EDUCATION AND ENTERTAINMENT.
 NEXT MEETING AUGUST 18, 2008 FARM & HOME CENTER. BUY, SELL, TRADE FROM 5:30 PM MEETING 7:00 PM.
 YEARLY MEMBERSHIP IS \$10.00 (\$5.00 FOR EACH ADDITIONAL MEMBER AT SAME ADDRESS.)
 MEMBERSHIP CHAIRMAN RICHARD PENDERGRAST 950 WILLOW LAKES DR., WILLOW STREET, PA 17584
 CLUB/TEMPORARY EDITOR'S ADDRESS C/O JERE GREIDER 3724 KENNEL AVE., COLUMBIA, PA 17512
 WEBSITE: WWW.PLAYLE.COM/CLUBS/LANCASTER OR GOOGLE SEARCH: LANCASTER COUNTY POSTCARD CLUB.

FIRST ANNUAL LANCASTER POSTCARD EXPO 1993

sponsored by the
 LANCASTER COUNTY POSTCARD CLUB



LANCASTER POSTCARD EXPO 1993
Saturday, August 21, 1993
9 AM to 6 PM
FARM & HOME CENTER
1383 Arcadia Rd. off Manheim Pike (Rte. 72)
Lancaster, PA

25 DEALERS

100 EXHIBITS

DOOR PRIZES, FOOD, FREE PARKING, AIR CONDITIONED, NO STEPS!
\$1.50 adm., \$1 with this card

LANCASTER COUNTY POSTCARD CLUB

2ND ANNUAL POSTCARD EXPOSITION IN THE HEART OF PA DUTCH COUNTRY

SATURDAY, AUGUST 20, 1994
9AM TO 6PM
FARM AND HOME CENTER
SERVICE ROAD
LANCASTER, PA

ADMISSION \$1.00

25 DEALERS

EXHIBITS

DOOR PRIZES, FOOD, FREE PARKING, AIR CONDITIONED, NO STEPS

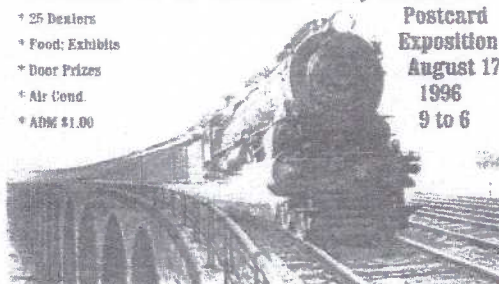
THIRD ANNUAL
 LANCASTER POSTCARD EXPO 1995
 sponsored by the
 LANCASTER COUNTY POSTCARD CLUB
 FARM & HOME CENTER
 Lancaster, PA

25 DEALERS
EXHIBITS
Adm. \$1

DOOR PRIZES, FOOD, FREE PARKING, AIR CONDITIONED, NO STEPS

All Aboard for the Lancaster County 4th Annual

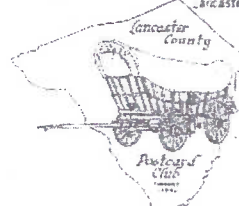
- * 25 Dealers
- * Food; Exhibits
- * Door Prizes
- * Air Cond.
- * ADM \$1.00



150th Anniversary of the Pa. Railroad

**Postcard
 Exposition
 August 17
 1996
 9 to 6**

You're invited to attend the 5th ANNUAL POSTCARD EXPO sponsored by the Lancaster County Postcard Club Lancaster, Pennsylvania



**Saturday
 August 16, 1997
 9 am to 6 pm**

**FARM & HOME CENTER
 Rte. 72, Manheim Pike
 ADM. \$1**

**25 DEALERS, OUTSTANDING EXHIBITS, FREE PARKING
 DOOR PRIZES, HOME COOKING, AIR CONDITIONING, NO ST**

**You're invited to attend the
 16th ANNUAL POSTCARD EXPO**
 Sponsored by the Lancaster County Postcard Club
 Lancaster, Pennsylvania

Saturday, August 16, 2008

9am to 5pm

Farm & Home Center Rte. # 72 near Rte. # 30

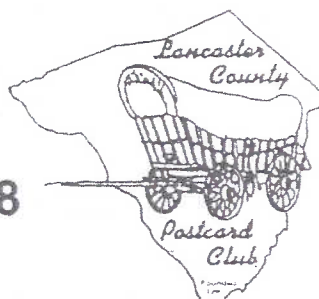
For Information Call Jere Greider:

(717) 285-5872 or email: jereg@earthlink.net

\$2.50 Admission! (\$2.00 with ad)

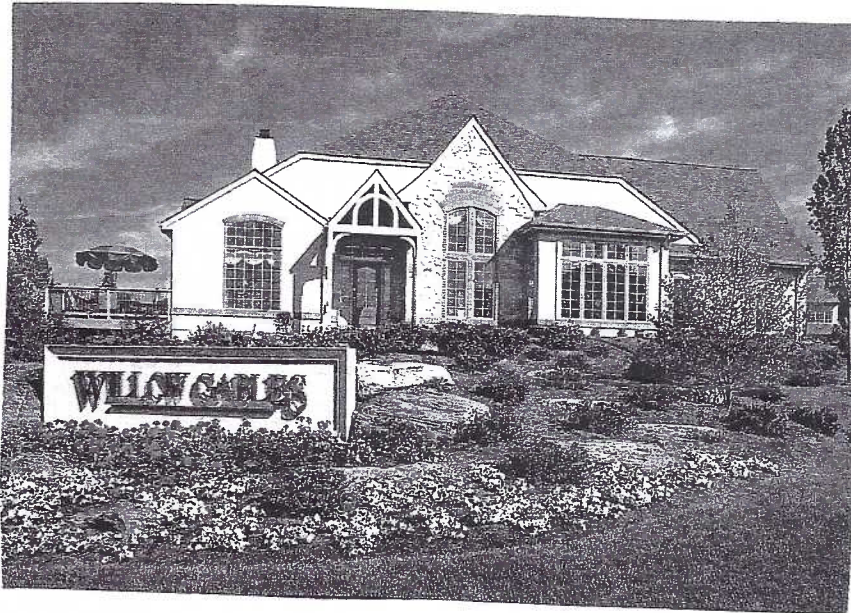
No Dealer Trading nor Early Bird Buying

Outstanding Exhibits, Door Prizes, Air Conditioning



WILLOW VALLEY RETIREMENT COMMUNITIES A MAJOR SOURCE OF LANCASTER POSTCARDS

By Dick Pendergrast



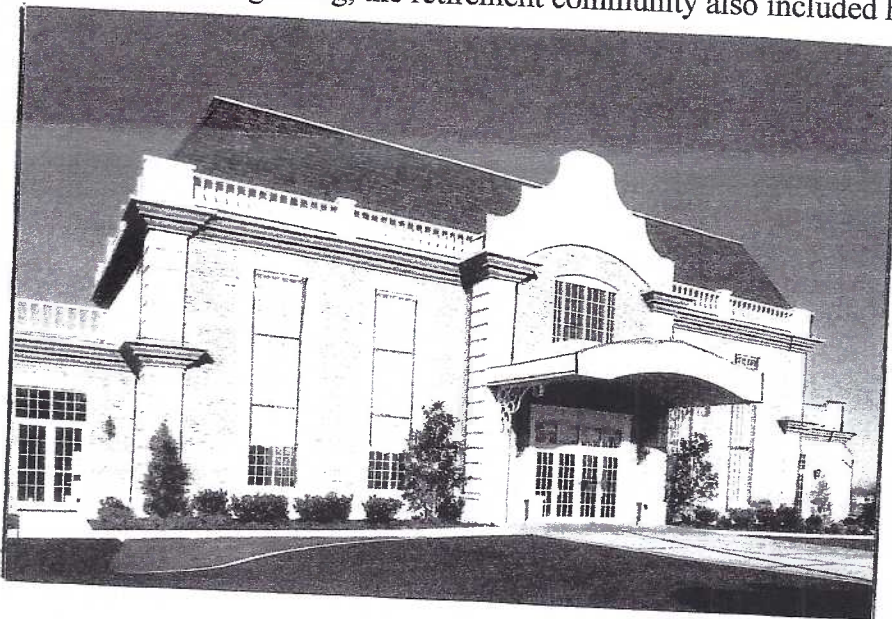
A Villa at Willow Gables

Willow Valley had its start in 1966 when John and Florence Thomas opened a 30 unit motel and a 100 seat restaurant on Route 222 south of Lancaster. That modest start would grow into today's Willow Valley Resort with some 350 rooms and banquet facilities for up to 1,000.

In 1984 Willow Valley decided to open a retirement community across the road from the Resort. The Manor Community opened that year followed by the Lakes Manor in 1986, Manor North in 1993 and Spring Run in 2003. Other smaller living areas were added during the community's

growth including Garden apartments at Manor North and Villas and Mid Rises on the Lakes Campus.

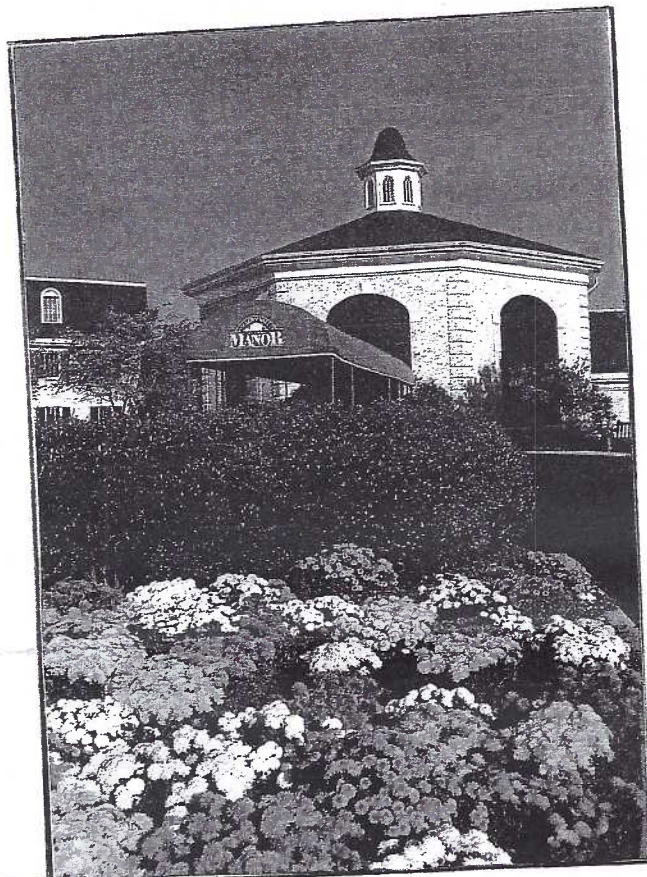
In 2001 ground was broken on the Lakes Campus for the Cultural Center, a large building which houses a theatre, a café, a swimming pool complex and exercise facilities. From the beginning, the retirement community also included health care facilities for assisted living and nursing care.



Willow Valley Retirement Community today had some 2,000 independent living apartments as well as the health care facilities. To attract new residents they do a lot of advertising and have open houses for prospects where they hand out postcards. I know of some 20 of these publicity cards and am listing them on the next page.

Below - The Cultural Center

1. Manor – Main Entrance with Flowers
2. Manor – View of Lobby
3. Manor North – Main Entrance
4. Manor North – Building with Flowers
5. Manor North – Courtyard with Gazebo
6. Manor North – Lobby
7. Manor North – Lobby
8. Lakes Manor – Building with Pond
9. Lakes Manor – Main Entrance
10. Lakes Manor – Lobby
11. Spring Run – General View over Pond
12. Spring Run – Main Entrance
13. Spring Run – Library
14. Spring Run – Dining Room
15. Willow Gables – Villa
16. Willow Gables – Night View of Villa
17. Willow Gables – Kitchen Interior
18. The Cultural Center
19. The Glen – for Supportive Living
20. Lakeside – for Supportive Living



Above – Main entrance to the Manor with fall flowers



Left – The courtyard and gazebo at Manor North

Right – View of lobby at the Manor



AUGUST 2008 LCPC NEWS

Fifty-three members were signed in at the July meeting. Robert Schaub, grandson of Al Schaub was a visitor. We had a short business meeting. The May and June minutes and treasures reports were read and approved. The treasury balance is \$5416.19.

In member news it was announced that Betty Weaver is doing well following lung surgery. Dorathy Fry would welcome visitors. If you are in the area of 235 Wheat Ridge Drive Ephrata, PA stop in and say hello to her.

Gisela Withers took part in the Show and Tell segment. She told about how a postcard image in a newspaper article led to the search for a missing monument. Do you have something to enter? I would like Show and Tell to be a part of every meeting.

Bill Buckwalter presented a very interesting program on Fry's Turkey Ranch. Many of us have eaten there but didn't know anything about their past. Bill started his presentation by giving a biography about Clyde Caulkins a popular postcard photographer from Tioga County.

Ten members took part in the single card competition. Subject was "Summer Sports".

1st Jim Ward When Mother Jumps

2nd Dorothy Haffly Steamboat Cats

3rd Carl Haffly Golfing Cats

Honorable Mention Tom Beck, Jere Greider, Barbara Heim, Bud Heim, Bob Kramer, Harold Moyer, Dick Pendergrast.

August-Single card competition-Pets.

Cheryl Edwards, Richard Edwards, Jackie Flararty, Barbara Heim, Ngoc Kreider, Al Schaub and Shirley Summers won a variety of door prizes.

The 50/50 \$27.00 won by Susan Glass.

In our January survey several members mentioned that they would be willing to be interviewed. Read about Tom Beck in this months issue.

POSTCARD EXHIBIT

The Wish You Were Here postcard exhibit at the Lancaster County Historical Society 230 N. President Ave. Ends August 9th.

STORAGE SPACE

The following members donated shelving. Bill Buckwalter, Bud Heim, Walt Mower. Jim Ward donated the library cart. DeDe Schaeffer donated ramps. THANKS.....Most members brought their section of the library or club items. If you can't bring your items on meeting nights please call me and we can make other arrangements.

EXPO UPDATE

Only a few members have sent their Expo exhibit forms to Bud Heim (form is included in this issue). The exhibits are a way we can show our hobby to the public. We still need people to sell tickets at the club table 12:30-3:00 and 3:00-5:00. Very good member response for all other times. **Please plan to support your club and show dealers August 16th.**

NOVEMBER AUCTION

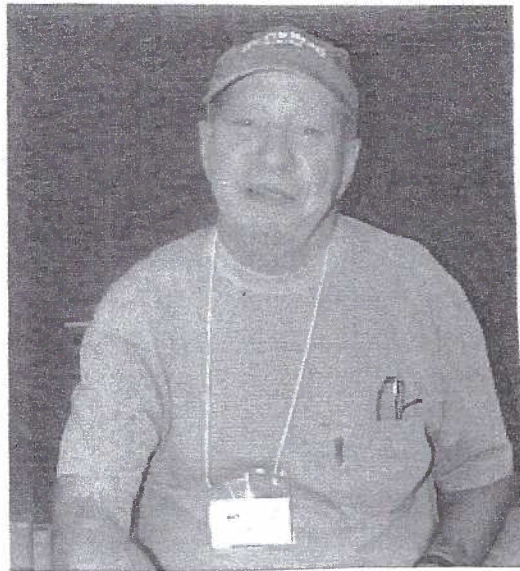
Walt Mower is the chairman for our annual November auction. He has the consignment forms. Please see that Walt receives your consignments by the September meeting.

THANKS to Dick Pendergrast for this month's postcard article.

Next meeting August 18th

Program – Expo Highlights

Single card competition – Pets



MEMBER INTERVIEW TOM BECK

Tom Beck hails from Lancaster city, an old South Prince Street boy. He grew up just below the old tobacco warehouse, now the Carter McRae Elementary School. After graduating from Lancaster Catholic High School, he worked at the old Hamilton Watch Company on the Columbia Pike before entering Millersville State Teacher's College in 1959.

His first teaching job after graduating from college was at Edward Hand Junior High where he taught English. In the early 1970's he began teaching English at Stevens Trade School where he remained until his retirement in 1999. During that time, he obtained his Master's Degree from Temple University and helped Stevens to obtain Middle States accreditation and, subsequently, college status.

Tom met his wife Betty while teaching at the junior high school. They have two grown children, Pam and Allison, and two grandkids, Alex and Elizabeth.

In the mid 1970's, while casually browsing through postcards at Renningers Antique Market in Adamstown, he recognized some scenes of Lancaster city that were reminiscent of his childhood; subsequently, he bought a few and became addicted to collecting. For a number of years, his focus was mainly on collection cards of Stevens Trade, the area immediately surrounding the school, and Lancaster city. He also collects drinking cards and cards of people with a large "gluteus maximus."

Tom was one of the original founding members of our postcard club --- he can still remember the 1990 inaugural meeting at the Stauffer Mansion on the Lititz Pike.

Having been in charge of the PR for the club for many, many years, he has served on the board of directors, as vice-president, and as president in 2002.

Aside from collecting postcards, Tom is also a Master Gardener since 2003 with close to 500 hours of volunteer work with the Penn State organization. Of course, he maintains gardens at his home in Lititz with his specialty being growing tomatoes during the summer.

Tom and Betty have traveled extensively since retirement, both in the United States and internationally. Some trips worthy of mention include Brazil, Argentina, Peru, the Galapagos Islands, the Amazon River, Costa Rica, Thailand, Egypt, South Africa, England, Greece, and Australia.

2008 EXPO EXHIBIT FORM

Mail or give this form or a duplicate to Bud Heim 783 Old Chickies Rd. Columbia, PA 17512. Phone 717-684-6533 on or before August 9, 2008. You are encouraged to enter all four categories. If you intend to use 2 boards (maximum) for any category please note this below. Include your title under the appropriate category.

Judges selected from the dealers on Saturday morning before the show will consider the following criteria:

Postcard Information	1/3
Presentation and Originality	1/3
Condition, Completeness and Rarity	1/3

Exhibit boards should be at the Farm & Home Center by Friday night, August 15th between 6PM and 7 PM. The last possible entry time is Saturday morning, August 16th by 8:00AM. NO EXCEPTIONS!. You may also give your boards to Bud beforehand if necessary. Do not cover your boards. LCPC will provide each board with a new plastic bag.

1st, 2nd, and 3rd places receive \$15, \$10, and \$5 in each category. Best of Show, chosen from the 1st place exhibits receives \$25 and Peoples Choice chosen by the public's ballots receives \$25. Each Entry receives a specially designed 2008 Expo Award postcard.

I will have an entry in the categories listed below with these titles:

HOLIDAYS

OCCUPATIONS

SMALL TOWNS

TRANSPORTATION

Member's Name:

Phone Number:

E-Mail:

COMPLETED LIST OF DEALERS FOR 2008 EXPO.

AL & JANICE BERNARD
DALE & GRETCHEN BIESECKER
HAROLD BURTON *
COX & STONESEIFER
MARK CLEMENS
ROBERT DISSINGER
LEE DIXON
JEFF EASTLAND *
KAY FEIGHT
KARL HELLMANN *
JERE GREIDER
BOB HOLLOPETER
MIKE MIDDLETON

LEON & DOLORES ROWE
AL SCHAUB
DEDE SCHAEFFER
MARIA SCHURZ
DALE SHAUB
HOWARD STEINBERG
LEIGHTON STOVER
JIM TIGNER
DON WACHTER
JIM WARD
ERNIE WHITE *
MARK WINTERS*

* NEW DEALERS THIS YEAR