

THE CARD - Vol. 20, No. 2. Issue 230. February 2009.

Monthly Publication of the Lancaster County Postcard Club, Lancaster, PA.

Enjoying postcards through education and entertainment.

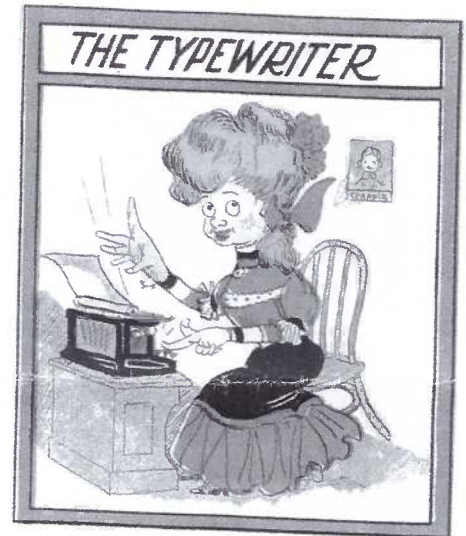
Next Meeting: Feb. 16, 2009, Farm & Home Center. Buy, Sell, Trade from 5:30 pm. Meeting - 7:00 pm.

Yearly membership is \$10 (\$5 for each additional member at the same address.)

Membership chairman: Richard Pendergrast, 950 Willow Valley Lakes Dr., Willow Street, PA 17584.

LCPC c/o 2009 Editor: Jim Ward 1795 Kleinfeltersville Rd. Stevens, PA 17578-9669

Club website: www.playle.com/clubs/lancaster or Google search: Lancaster County Postcard Club



Typewriters on Postcards

Because it's the month for Valentines we've chosen to dig deeply into dozens of sets of Vinegar Valentines (those postcards with unflattering faces and even less flattering sentiments) and focus on the latest mechanical device to reach obsolescence - the typewriter. For much of the 20th century it was an indispensable tool for professional writers and in business offices. There were many innovations - remember the typeball? Inked fabric ribbons became "carbon film" ribbons. Then there were cartridges. Electric typewriters evolved into word processors with memories and ultimately there is the computer - but still using the dependable typewriter keyboard!

Our typewriters and typists (starting top row left to right) are from "Series 308," Edw. Stern, Arthur Livingston, Aurolcrome, a second Series 308, and Illustrated Postcard Co. It was difficult finding a pleasant sentiment, but here's one from The Rose Company:

The Typist

Thou dainty fingered typist!
You're the richest, rarest, ripest
Little sugar plummy sweetheart
On the street.
I admire your silken lashes,
Through which joy and laughter flashes
And I love the very ground
Beneath your feet.

January Meeting Cancelled

Second Time in 20 Years

Snow and miserable weather in Jan. 1994 were good reasons for newly-elected Pres. Walter Mowrer to cancel his first meeting. In fact, bad weather on Feb. 21 caused a postponement until the following Monday.

Fifteen years later "scattered flurries" was the prediction for Jan. 19, 2009. They continued from mid-morning with no let-up. Newly-elected Pres. Dede Schaeffer and Jim Ward were in the Farm & Home Center basement taking inventory of LCPC's property. They were unaware the snow continued until they finished at 2 pm. With predictions of a temperature drop to 17, few would be venturing out for a meeting, so Dede and Jim called a number of members and asked that the decision to cancel be passed along. How bad was it? In a 2-hr. drive home (usually 35 minutes) Jim passed six cars off the road. S-O-O-O-O-O-

February Program – and January, too

The **Free-For-All** is on schedule. Any member may use part of, or all of one FREE table to buy, sell or trade cards and paper. (The regular \$2.50 fee per table does not apply.) In addition, a short "time out" will allow for projecting members' **Number Nine** postcards on the screen; in other words, an abbreviated version of the January program.

Birthday Cake

We'll also serve our 19th birthday cake in February. The room will be expanded to accommodate the Social Committee, Elmo and projection screen, chairs, and plenty of Free-For-All tables. Join us!!

Card Competition

The decision was made to have both the Jan. and Feb. subjects for monthly postcard competition! Bring your MUSIC or MAKING MUSIC (Jan.) cards as well as February's subject, LOVE. The exhibit board will be divided into two halves. Members will also receive two ballots: a blue one for Music and a pink one for Love. A reminder – cash awards are: First Place \$5, Second \$4, Third \$3.

2009 Monthly Postcard Competition Subjects

All are single postcards unless noted as "board."

Jan. - Music/ Music-Making

Feb. - Love

Mar. - Housework/Farm work - *board*

Apr. - Water

May - Selling/Giving Flowers

Jun. - Two by Two (Couples) - *board*

Jul. - Great Moments in History

Aug. - *no meeting*

Sep. - Learning

Oct. - Sports - *board*

Nov. - Smiles/Laughter

Dec. - New Years Greetings

Future Postcard Shows

Mar 1 - Lancaster Stamp Club Show, Farm & Home Center (Some postcard dealers.) 10 to 4.

Mar. 14 Harrisburg Postcard Show, American Legion Hall, (Some stamp dealers.) Linglestown.

Mar. 27-28 Morlatton Postcard Show, Farm & Home Center, Fri. 10-6, Sat. 10-4. \$2 or \$1.50 w/adv.

2009 Dues

Our club's fiscal year begins in Mar. Please send your dues to Dick Pendergrast now. See masthead.

Library Donation

We wish to thank Bill Seigford, LCPC #48, for donating to our library, "Destination – How Trolleys and Postcards Helped Create the Southern California Dream, 1898-1950s."

Tentative Programs for 2009

- Feb. – Free-For-All and The Number Nine PCs (Jan.)
- Mar. – Take a Look at the Other Side (Karl Hellmann)
- Apr. – Fred Harvey's Postcards (Paul Smoker)
- May – Downtown Lancaster (Tom Beck)
- Jun. – Annual Picnic at the Heim's home
- Jul. – Blanche Nevin Impersonator
- Aug. – No Meeting – LCPC Expo on August 15.
- Sep. – open
- Oct. – Lancaster Businesses. L to R (Jim Ward)
- Nov. – open
- Dec. – Christmas Party (program open)

LCPC Inventory – Jan. 19, 2009

Recorded by Dede Schaeffer and Jim Ward

Books -

129 - Volume II *Windows to Our Past*

Club Table -

Boxes of 10¢ postcards

Double rolls of tickets (5 partial rolls)

Pencils, ballots, etc.

Social Committee -

1 Box: table covers

2 Boxes: plates, cups, place setting utensils

Program Committee -

1 Box containing Elmo presenter

1 Box with new projector (works w/Elmo)

1 Box – slide projector and slide tray

1 Artograph (opaque) projector, 200 w. bulb

1 Microphone kit

Expo Committee -

5 Roadside signs mounted on iron pipes

1 Lg. banner, approx. 6' x 20"

5 Sets 8' x 6' easels (a sixth set is in upstairs closet behind speaker's stand)

14 Lg. bags to sleeve expo exhibit boards

\$50 total in Expo "cash" door prizes

Awards: 1 #1, 4 #2, 3 #3, 34 Honorable

Mentions, and 1 blank (for judges)

4 Exhibit category signs

Exhibit ballots (short supply)

1 Lg. double roll admission tickets

Library Committee -

1 Steel library cart with LCPC library books
(List of books with Librarian)

2 Lg. notebooks of NPW exchange postcards

2 - 5' Ramps to accommodate library cart over basement steps (metal ends belong to Dede S.)

Misc. Club Material -

Club Minutes, Treasurer's Reports, etc. 1990-2002. (2003 to 2008 with present Secretary)

1 Album of Earl Carver's club photographs

1 President's gavel and wood block

1 Surge protector (7 outlets), 2 extension cords

1 - 6' x 3' Heavy duty shelf w/8 shelves

1 - 3' x 30" Heavy duty shelf w/3 shelves

1 - 4' x 30" Shelf w/6 shelves

Inclement Weather Numbers

In the event of bad weather or a forecast for bad weather on the day of our meeting, you can phone one of the members listed below, between noon and 1 PM, to confirm whether or not there will be a meeting – Dede Schaeffer 392-3955, Jere Greider 285-5872 Jim Ward 721-9273, Anne Steinberg 786-2362

Sympathy

The club extends its deepest sympathy to Past President Tom Beck. His older brother, Paul, passed away January 12. Interment was in St. Mary's Catholic Cemetery, Lancaster.

Excellent Postcard Research

For more than ten years your editor has been agent in the US for TPA (*The Postcard Album*), written primarily about early European postcard printers and publishers. If you'd like to see a sample of the content of these annual magazines, visit this website: tpa-project.info.com.

See my paid advert page six of this issue.



An Alphabetical Sampling of Postcard Artists

By Dede Schaeffer

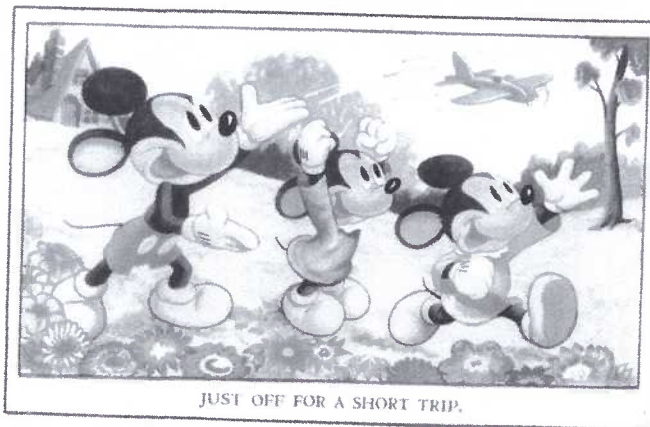
ROSE CLARK was an American artist whose postcard popularity was 1907 to 1910. She worked for Tuck, Rotograph and Ullman publishing companies. Her PC drawings were done in comic and fantasy veins including animals.



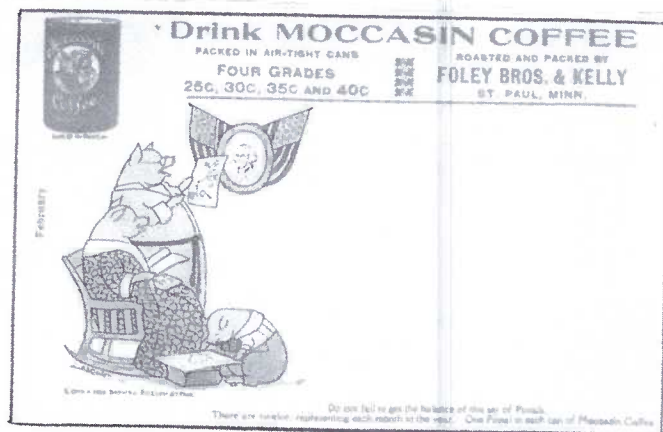
WILLIAM WALLACE DENSLOW was an American artist (1856-1915). His postcard work included nursery rhymes, comics, and teddy bears, but most of all, advertising products: paint, bread, and shoes and most notably at the time, work for Elbert Hubbard and his Roycroft Arts & Crafts Co. Highly regarded, Denslow was chosen to illustrate the first edition of *The Wizard of Oz* in 1900. He illustrated other children's books as well as many scholarly titles.



HAROLD COPPING was an English artist (1863-1932). His art was used by Tuck to illustrate both books and postcards. Copping's work was very detailed and included religious subjects as well as characters from Dickens and Shakespeare.



WALT DISNEY, American imaginative genius, lived from 1901 to 1966. His 1928 creation, Mickey Mouse, was produced by a team of seasoned animators led by Disney himself. His success spread to the 1930s when PC publishers needed a boost for their flagging product. New Disney characters enlivened the PC market into the 1940s. In Britain, Valentine & Sons had exclusive rights to produce cards for *Snow White* (1938), *Gulliver's Travels* (1939), *Pinocchio* (1940), and *Bambi* (1942).

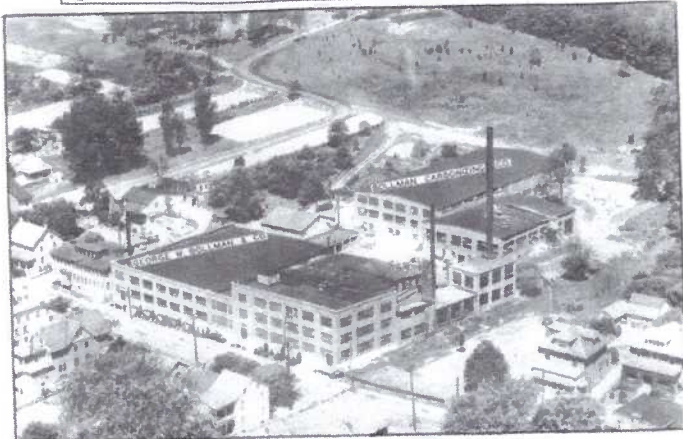


BERTHA CORBETT was an American postcard artist. Her work - especially her drawings of Sunbonnet Babies, was best known from 1900 to 1916. She illustrated books and postcards. After her marriage in 1916 she was known as B. C. Melcher. The example we show is one of her more unusual cards.

GRACE GEBBIE DRAYTON, born in Darby, PA in 1877, died at 58 in 1936. Her first married name was Wiederseim and these postcards date from 1907 to 1911. Her second marriage, to a Drayton, also ended in divorce in 1923, so later cards (from 1911 to 1916) were signed G. G. Drayton. Her best known subjects were the Campbell Soup Kids and Dolly Dingle paper dolls, images she drew from childhood self-portraits.



An alphabetical tour of locations found on
postcards in Lancaster County by Jim Ward.



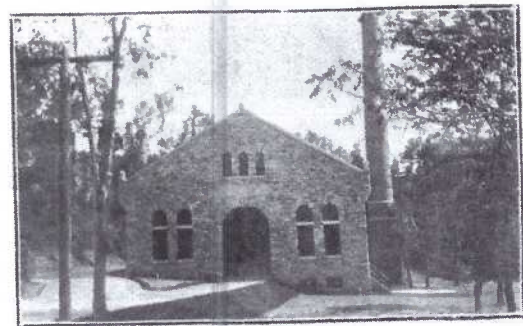
Adamstown RP (1925-40s) Aerial of Bollman Hat Co.



Bareville RP of Musser's store, P.O. and home.

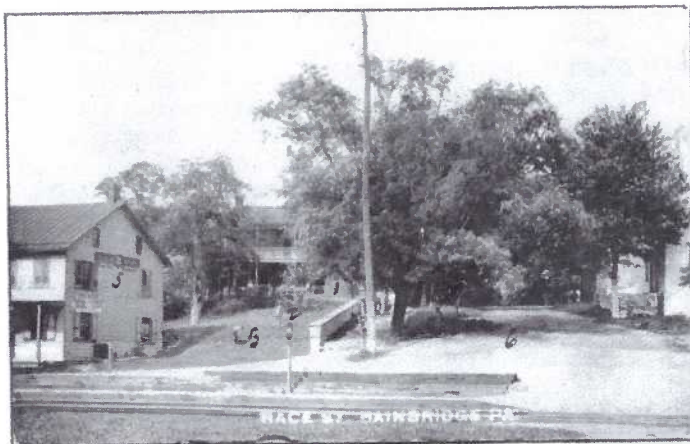


Akron Main St. view by Merrimack PC Co.



OCTORARO PUMPING STATION, BARTVILLE, PA.

Bartville Pumping station on Octoraro Creek. (u/b).



Bainbridge RP Race St. Bainbridge Inn (left) '08 PM.



Baumgardner RP Mennonite Ch., Martic Township.



Bamforth RP (1904-18) Village brick schoolhouse.



Bellaire RP (1918-30) Pool in neighborhood park.

An alphabetical tour of locations found on postcards in Lancaster County by Jim Ward.

Bethesda
RP (1907-09)
Bethesda Church.

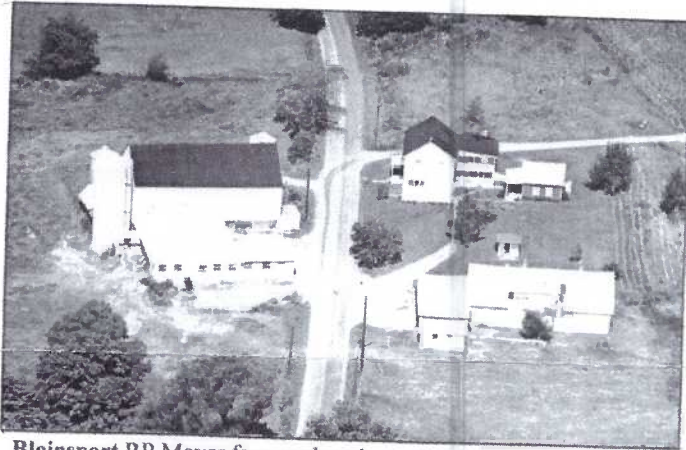


Bowmansville
RP St. Paul's U.C.C.Ch.
1906 PM.



Brickerville Wurlitzer Piano Rentals, Sales 1961 PM.

Bird-in-Hand RP Railroad Station. 1914 postmark.



Blainsport RP Moyer farm and cattle auction barn.



Brownstown RP (1904-18) Mennonite Ch. in winter.



Blue Ball RP (1904-18) W. J. Lewis Harness Store.



Brubaker Valley Menno Hershey Brubaker farm.

Messages...ailments – Part 2.

Over the last 20 years, I've read messages on about 1,000 local postcards. From that number I gleaned fewer than 20 where the primary subject was sickness. Were local folks extra healthy or didn't they pamper themselves like we do today? Caution – If you're presently suffering,, or "just under the weather," you may wish to skip this article. It won't help you feel any better. Parts of the PC message, unrelated to ailments, have been excluded.

Feb. 1911, Lanc. to Lititz – How are you? I have the cold so bad. I can hardly speak loud. If you want it I will send it to you. Hope you are not cross because we did not come out last Sat. eve. I will tell you sometime why we did not come out.

Mar. 1911, Lanc. to Lititz – Pity the sick & helpless please. I am sick I bed with the grippe & disordered system. The doctor said I would have to stay in bed till he told me to get up which I hope will be in a few days. Please don't worry about me because I just thought I would let you know so that you would not.

Oct. 1911, Millersville to Hanover – Pa & Mom were out at Uncle Adams on Sunday and the doctor was there. He said we shall by no means think he is out of danger. If he eats anything he is a dead man. Uncle Will bought himself a farm of 64 acres and is moving on in this spring.

Dec. 1911, Lanc. to York – Dwight said I should write and thank you. He can't write this time. He is sick since Tuesday night. I have been up with him most of the time since he has a beating in both ears. He was almost wild. We had a Doctor, a specialist and another Dr. They are running now that gives him some relief. Poor kid. He looks awful bad. He said he will be thankful when he gets better. He hasn't played with anything yet. He don't bother anything.

Sep. 1913, Quarryville to Strasburg – We arrived home safe. Mother stopped at the Dr.'s and got medicine. He said she was all run down. But she won't keep quiet. I hope this will find you all well. Isn't this a hot [one]. We just had a sprinkle. We have just finished dinner, had flannel cakes, so you can imagine I am full. We ironed and churned yesterday. I washed some and ironed that this morn. We are making grape jelly; don't have any more.

Sep. 1917, E. Pete to Manheim – We are getting better slowly. We have quite a number of sick people yet. I think they have it* under control. We have no new cases at present.

*This is most likely the influenza epidemic.

Jan 1919, Safe Harbor to Millesville – How is Mom. If she gets worse, let me know. If I was you I would put onions poultice on her to keep it off her chest and keep them good and hot.

No postmark – I am no better and not any worse. Got down safe and enjoyed my trip. Had an x-ray taken. They found the bone fractured. Will not operate or do any-thing to the limb as it is not advisable. Want me to let it go as it is.

Ailment Postcards

These postcards (and the three in the Jan. Card are from the set of six, "Ailments of Childhood" Series published by Edw. Gross. Art is by Katharine Gassaway. Thanks, Dede, for sharing them.



No postmark – Baby does take a good share of my time but we have had so much sickness that I have not had time to write. Tom has had such a sore arm for about 8 wks. now and can't do anything yet that I am kept on the jump. Will write a letter soon. I am pretty well now, but it was a long time before I got that way. I had a backset and was in bed for 2 wks. longer than usual. Had so many nervous chills; lots of sickness of all kinds here now, even pink-eye.

HIVES
PLEASE may I scratch just once?



Want to learn more about postcards? *The Journal of the Postcard History Society* is a 16-page quarterly (color covers) loaded with fun and facts about cards from here and beyond – and most are offered for sale. Written and published by Jim Ward. One year subscription is \$9, two years for \$17. Make check payable to Jim Ward.

The latest issue of *The Postcard Album* contains 60 pages, profusely illustrated. Here's a unique opportunity to learn more about early postcard publishers and printers and more! Issue #23 features Meissner & Buch and Stengel & Co. A free ad for every new subscriber. \$7 postpaid or \$6 picked up at the meetings or shows. Make check to Jim Ward (USA agent) 1795 Kleinfeltersville Rd. Stevens, PA 17578.
This is a paid advertisement.