

THE CARD - Vol. 20, No. 5. Issue 233. April 2009.

Monthly Publication of the Lancaster County Postcard Club, Lancaster, PA.

Enjoying postcards through education and entertainment.

Next Meeting: May 18, 2009, Farm & Home Center. Buy, Sell, Trade from 5:30 pm. Meeting – 7:00 pm.

Yearly membership is \$10 (\$5 for each additional member at the same address.)

Membership chairman: Richard Pendergrast, 950 Willow Valley Lakes Dr., I-506, Willow Street, PA 17584.

LCPC c/o 2009 Editor: Jim Ward 1795 Kleinfeltersville Rd. Stevens, PA 17578-9669

Club website: www.playle.com/clubs/lanaster or Google search: Lancaster County Postcard Club

Happy Birthday TBCBSP!

Theodore Burr Covered Bridge Society of PA Celebrates 50 years Publicizing and Preserving Covered Bridges

To honor the society's anniversary, and celebrate **Covered Bridge Month – May**, we're offering a few postcard views of local covered bridges. County resident Bob Shirk published 2 sets of CB views - a total of 90 postcards - from photographs he took in 2002 and 2003. This is the most extensive coverage of local covered bridges we've ever seen. The beautiful cards feature the rich red color of our local bridges; many in snow.

TBCBSP is named for Theodore Burr who built his first span across the Hudson River in 1804. His truss design can be seen on this interior PC view of the Hunsecker Bridge. Burr is the most frequently used construction in Pennsylvania's covered bridges.



Hunsecker's Mill CB, near Zook's Corner (Rte. #23) was reconstructed after Hurricane Agnes destroyed it in 1973. Local residents footed most of the \$321,000 cost and so had a say in keeping the siding unpainted. It's the only county-maintained CB *not* painted red with white portals.



Cider Mill, also known as **Bitzer's** or **Eberley's Mill** is on Cats Back (Katze Boucle) Rd. east of Farmersville on the way to Dot Fry's home at Fairmount.

Would you like to know more about TBCBSP? Contact the group's president, Tom Walczak at tewalczak@comcast.net or talk to LCPC members Mary Darrenkamp and Carl Haffly for more information.

Lancaster's Covered Bridges continue on page 6.

April Meeting

April found 59 attending incl. two guests. Some members selling their wares arrived as early as 4:30 to unpack their cars between the April showers. Set up and selling were: Fred and Marie Schurz, Betty Sowers, Bob Kramer, Jere Greider, Mike Middleton, Dede Schaeffer, Jim Ward, and Ray Dennis. There were 52 members and four guests present.

Paul Smoker's Fred Harvey program was appreciated and we learned about the Harvey Girls as well as the line of Harvey Hotels throughout the West. Betty Beck operated the Elmo projection system.

Carl Haffly won \$27 in the 50/50 and door prizes of Clipper Stadium passes, Hershey Park discount coupon and a \$2 LCPC cash card were won by Susan Glass, Becky Schaum, Ray Dennis, Marie Schurz and Sharon Gromis. Congrats to all -- and a big Thank You to the anonymous donors.

April Card Competition

Mother Nature joined the WATER competition with her all-day showers (no prize awarded.) We saw WATER as vast as the ocean and a little as a swallow -- a good representation from local bodies of water and the usual cartful of comical characters.

Twenty-five club members (is this a record?) *did* receive 49 votes. Awards went to --

First Place Walter Mowrer 1936 Susquehanna Flood

Second Place Mike Middleton Hollywood Hydrant

Third Place James Tanis Fishing in a Duck Pond

Honorable Mentions

Betty Beck	Water Well in a Rebus
Tom Beck	Never Felt Better
Susan Glass	Snoqualmie Falls, WA State
Jere Greider	Boulder Dam
Carl Heffly	Bushkill Falls, PA
Barbara Heim	Nolt's Pond, Silver Springs
Bud Heim	Safe Harbor
Bob Kramer	1913 High Water
Doug Milliken	Negro Baptism (Detroit PC)
Harold Moyer	Frog in Your Throat
Ruth Moyer	A Shower Bath
Dick Pendergrast	Water, Water Everywhere
Dede Schaeffer	Flying Fish
Becky Schaum	Going Crabbing
Tom Schaum	Held Against My Will
Maria Schurz	Niagara Falls at Night
Shirley Summers	British Weather
Don Tribit	Battleship Illinois (Columbia Expo.)
Jim Ward	Kids' Water Sports
Jan Weitzel	Brookside's Twin Pools
Gisela Withers	The Big One!
Bob Zink	Quay's Pond, Moutville, PA

A big wet kiss goes to all the participants. April showers bring May FLOWERS. More specifically, spend that extra ½ hour to find flowers for sale or flowers being given (Mother's Day?) but we'll accept any flowers, esp. party ones!

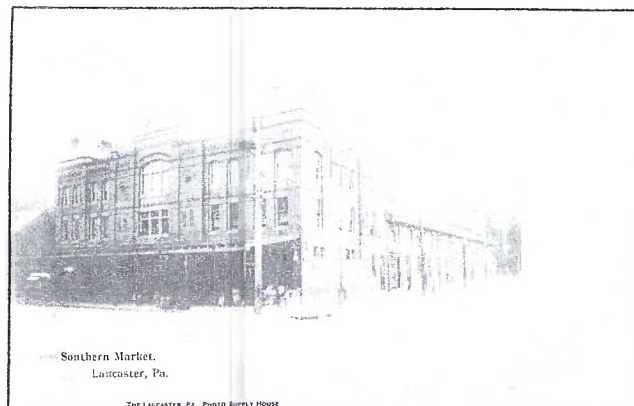
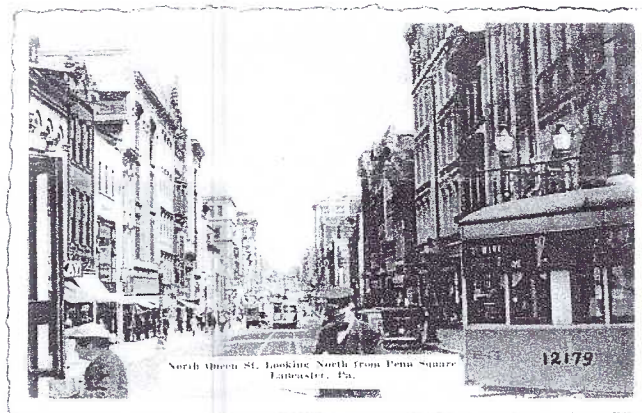
Club members wishing to contribute articles for The Card should hold them for 2010. Space in this year's issues is accounted for.

Note -- The Master Gardeners Annual Plant Sale postcard included with the April Card was courtesy of Betty and Tom Beck. "Thank You Becks - both MGs"

We are saddened to report that Betty Kreider lost her brother to a very long struggle for life on April 15. Terry Garner was formerly from Lititz but moved to Lewiston, NY, where he was president of the Canadian division of World Kitchens.

May Program

Tom Beck grew up within walking distance of Downtown Lancaster. In May he'll take us on some of those familiar walks using dozens of Lancaster postcards. Below we see a familiar scene - Penn Square looking north on North Queen St. To the right is a 1940s Birney CTC (Conestoga Traction Co.) trolley. The familiar trolley dispatcher (center) kept the trolley motormen on schedule as they passed through the Square on their routes through the city and county. Also in the foreground is a rider boarding a second trolley (left). A third Birney moves down the center of N. Queen towards the Orange St. intersection. Henry G. Hoeltzel was the publisher as well as distributor of the Silvercraft card printed by Dexter Press.



The Lancaster Photo Supply House published this u/b real photo of the Farmers Southern Market House. It still stands on the southwest corner of Vine and Queen Sts. The 1880s saw the Central, Northern, Southern, Eastern and Western Farmers Markets all strategically erected around the city. The Southern Market was designed in the Queen Anne style by C. Emlen Urban. It closed as a market in 1986. It has since been converted to the Lancaster Visitors Center and City Council Chambers.

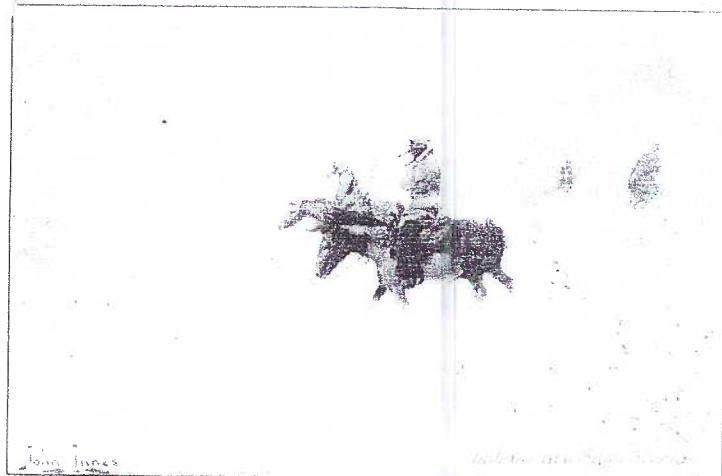
Expo Exhibit Categories

At the May meeting of the club's Board and the Officers, the following subjects were chosen for this year's Expo board competition: Animals, Children, Foreign and Holidays. Now you know and with three + months to think and work...GET BUSY!

An Alphabetical Sampling of Postcard Artists

By Dede Schaeffer

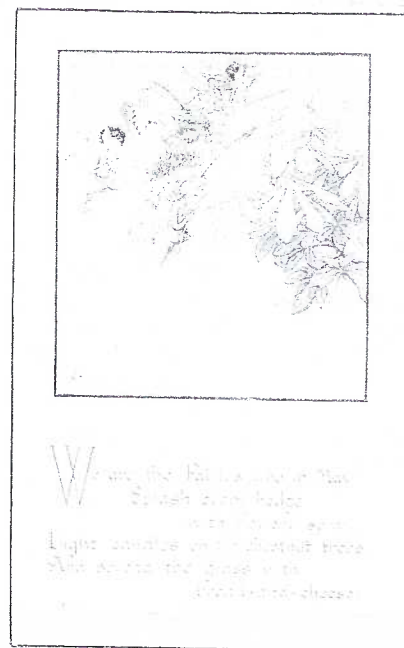
THE CARD May 2009 Pg. 3



John Innes was a Canadian artist and lived from 1864 to 1941. His subjects included animals, cowboys and Indians and he drew numerous cards depicting scenes from the Frontier and Old West days.



Note: Because of a lack of "I" artists, I've fudged a little this month. Included here is a 4-card **Installment set**, copyright 1906, by the artist, W. W. Denslow (see Feb. *Card*). The postcards are printed in black and red. The publisher is W. M. Beach Co., Roxbury, MA

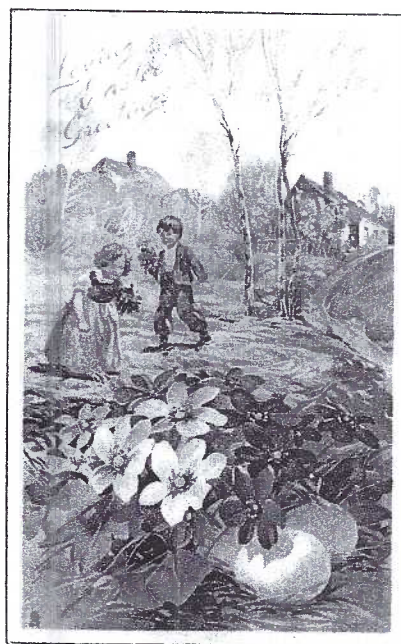


Helen Jacobs, an English artist, lived from 1888 to 1970. If someone had asked if I had any postcards done by her, my reply would have been "No." But in doing research for this project, I learned more and more about the never-ending wonderful world of postcards. Her mediums were pen and ink and watercolors. She was so gifted they were exhibited in galleries all over Britain. She is best known for her illustrations in educational books. She did *not* do many postcards. Pictured is the month of May. Sadly the space is devoted more to the verse than to the fine and delicate illustration.

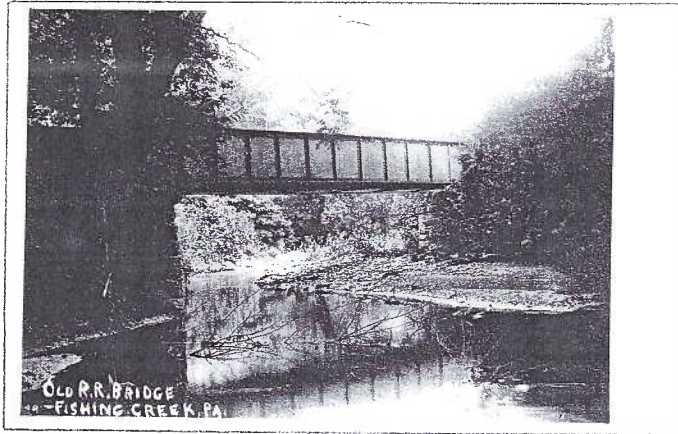


Ivy Millicent James, our third English artist, lived from 1879 to 1965. The person sending the card illustrated, penned "poor way to spell Jim." Also, that person signed it "JW" (but not our JW) as this was sent pre-WWI! But getting back to Ivy - she was fascinated by greeting cards, especially Christmas cards of which she designed many. She received commissions from the top publishers of the time - Tuck, Faulkner and Valentine. Her drawings depicted everyday events while in her private life, she was a suffragette and her efforts went toward improving children's lives.

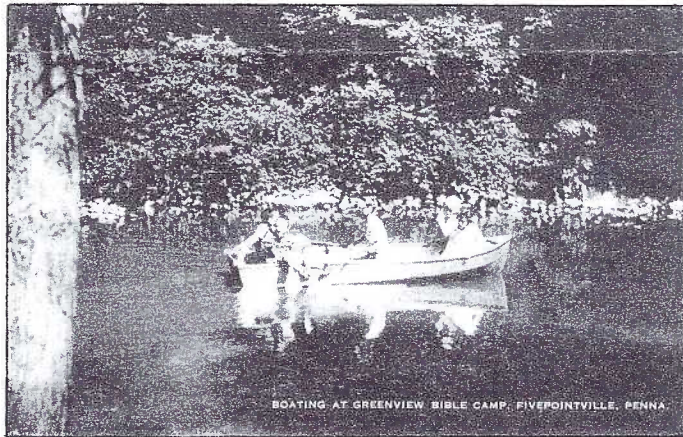
Helen Jackson was from a well-to-do English family. She lived from 1855 to 1911. Her father was a successful builder and contractor. Helen had three sisters and two brothers. Her work was exhibited at most of the leading galleries in Britain. She also gave art lessons. In the 1890s, Raphael Tuck used her artwork in books and on postcards. Most of her cards were done in soft colors on chromolithograph cards and illustrations with children and cats dominant.



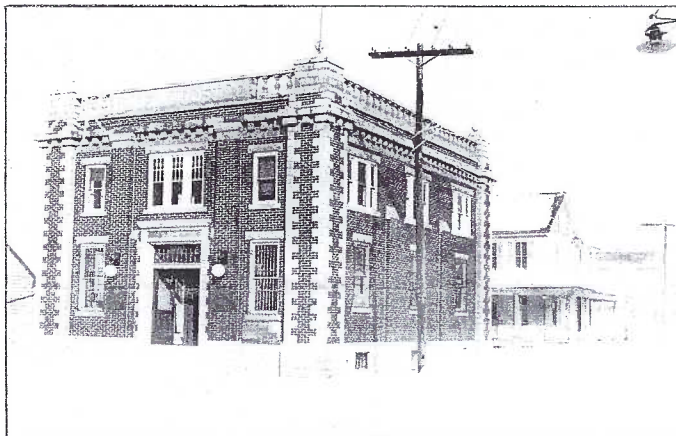
An alphabetical tour of locations found on postcards in Lancaster County by Jim Ward.



Fishing Creek RP Old railroad bridge. 1915 PM.



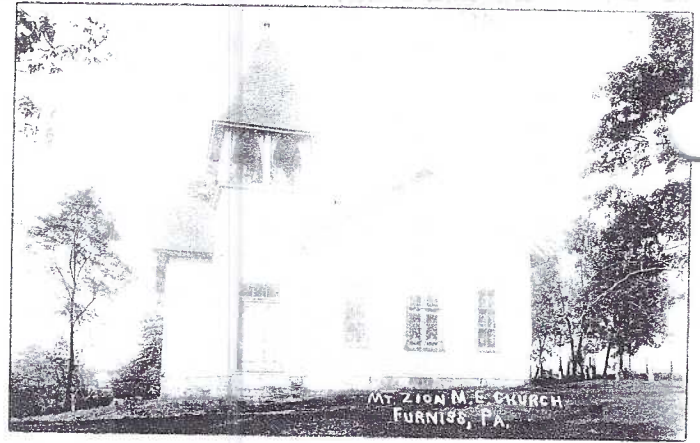
Fivepointville Boating at Greenview Bible Camp.



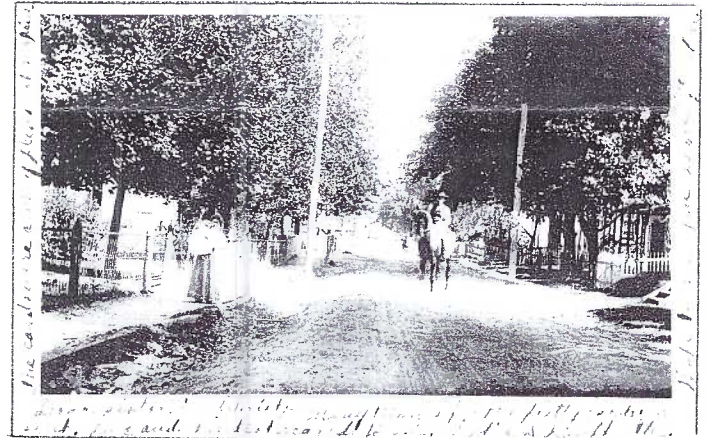
Florin (1918-30) RP Winter view of Florin Trust Co.



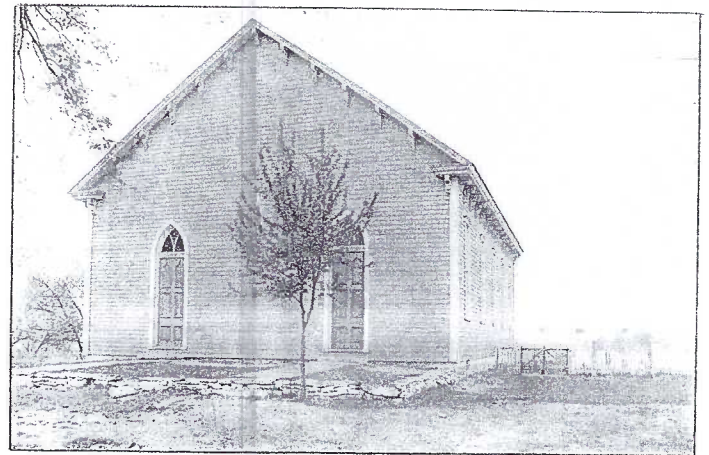
Fulton House RP ('04-18) Rieker Schnitzelbank map.



Furniss RP (1904-18) Mt. Zion M. E. Church.



Gap RP Mother and baby, mounted rider. 1908 PM.



Georgetown RP Early M. E. Church view. 1911 PM.



Goodville RP Water St. showing drug store. 1915 PM.

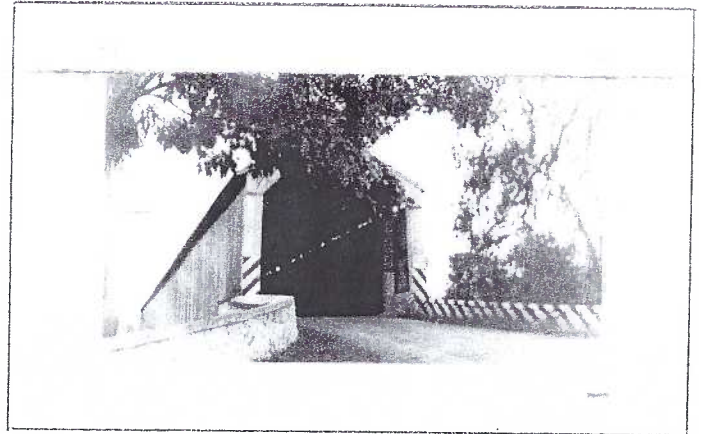


Gordonville RP Maple Avenue. Oct. 30, 1909 PM.

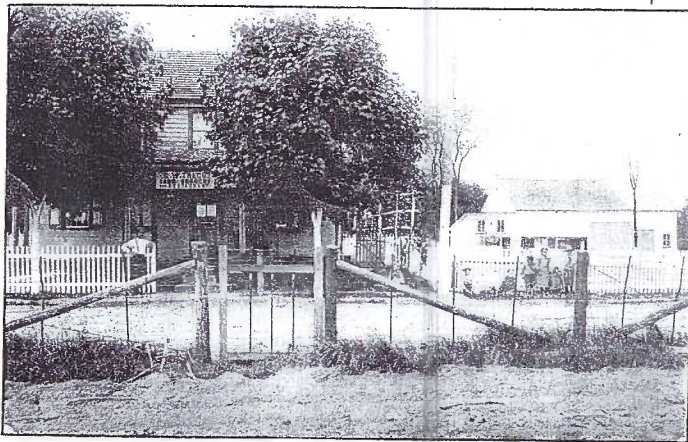
Green Bank
Now Ranck's U.M.Church
d/b, 1909 PM.



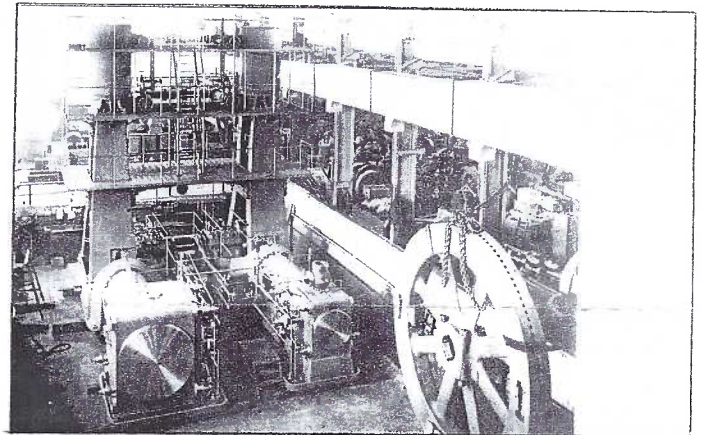
Hinkletown RP (1904-20s) Black Horse Hotel.



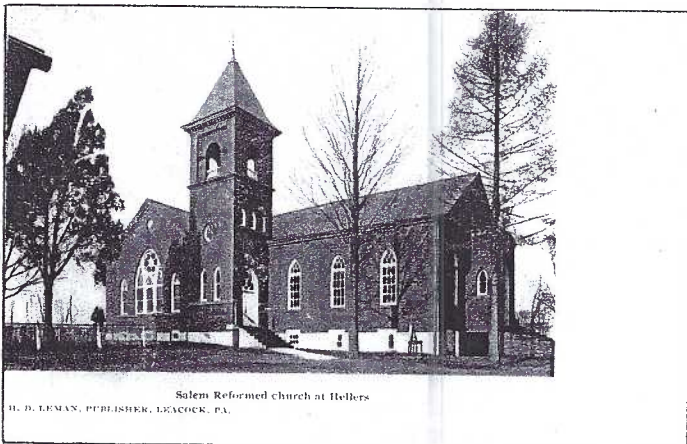
Hunsicker RP (1925-40s) Covered bridge.



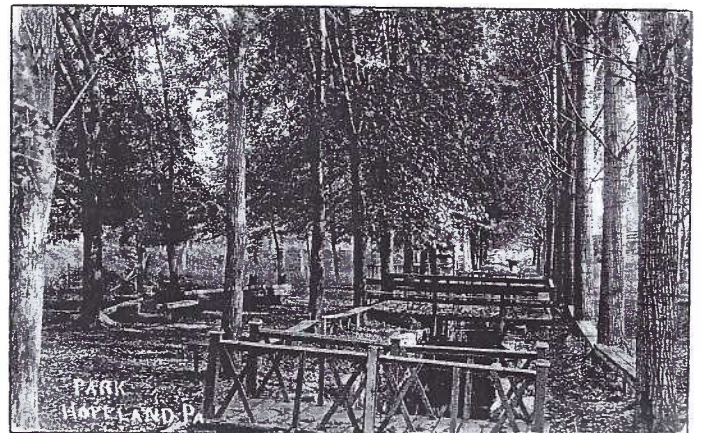
Hahnstown RP(1904-20)Trego's Grocery,Restaurant.



Holtwood RP (1904-18) Int. of hydroelectric plant.



Hellers Salem Reformed Ch., u/b by H.D.Leman.

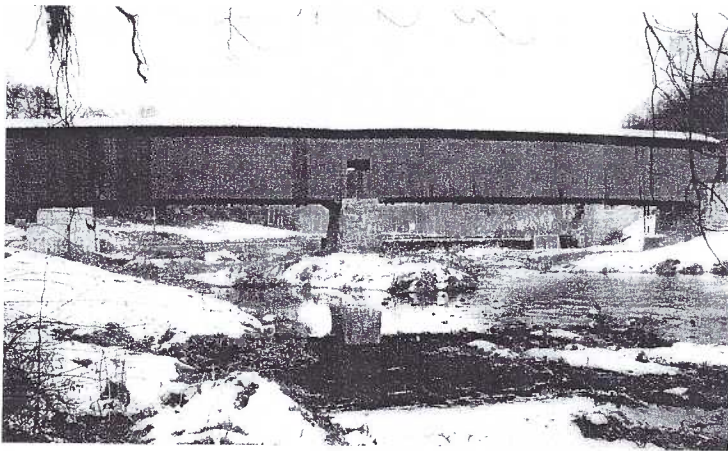


Hopeland RP (1904-18) Community Park.

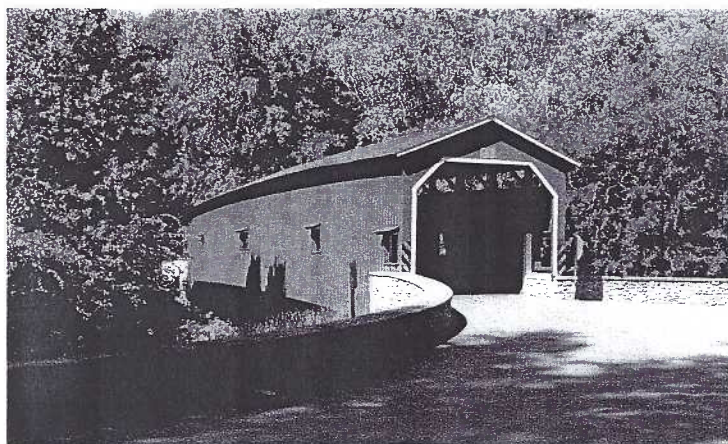
Continued from page 1.



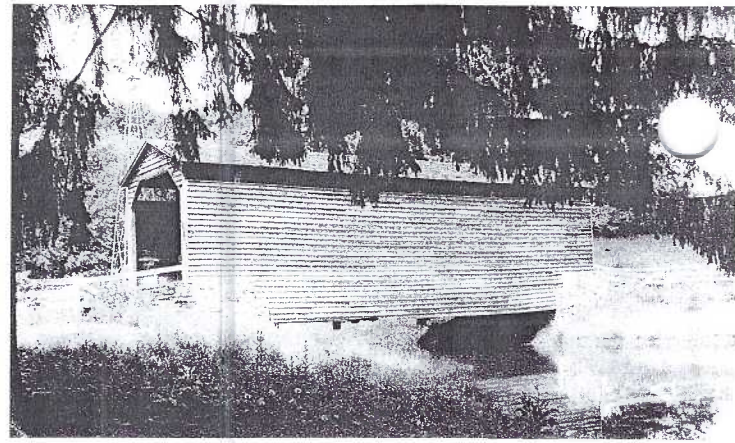
Zook's Mill/Wenger's/Rose Hill CB. near Brownstown has repairs underway and may be opened by late August. Folks familiar with the Log Cabin Restaurant must take a circuitous detour to have their meal.



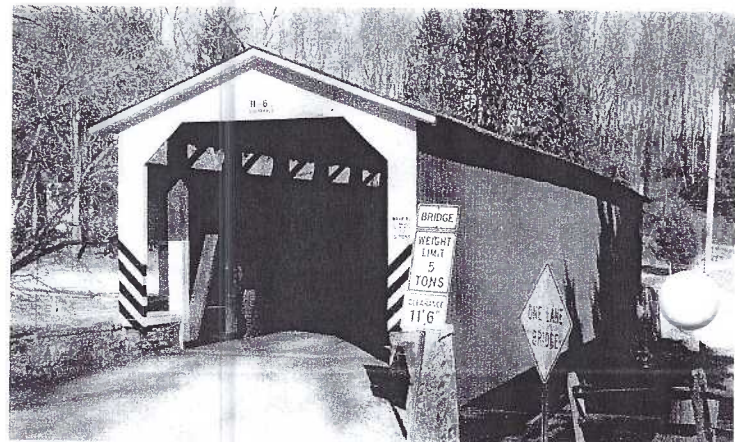
The Pine Grove CB spans the Octoraro Creek between Chester and Lancaster County. It's the longest in the county and one of the longest in PA and only one of two remaining 2-span CBs in Lancaster Co.



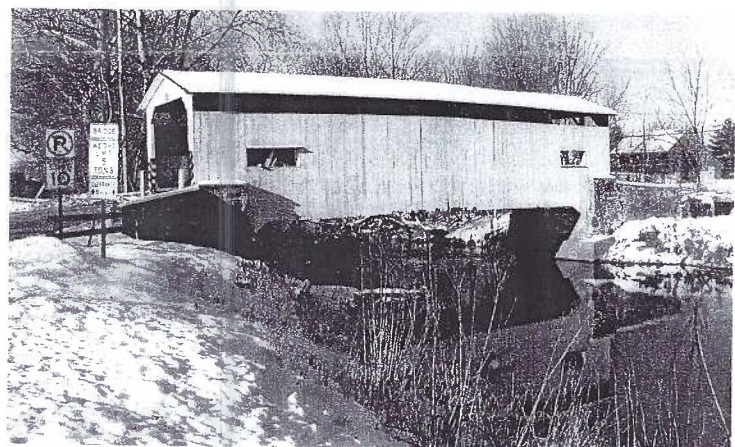
Colemanville CB crosses the Pequea Creek. As this new bridge was constructed, the skeleton of the old bridge remained standing a few yards away so historians had the rare opportunity to snap both CBs on the same photo.



Buck Hill Farm CB is on private property south of Kissel Hill, east of Route 501 and the shopping center. It was rescued from complete obliteration when replaced by concrete at another location.



White Rock CB makes the headlines once a year when the Slumbering Lodge of Groundhogs meets in their lodge next to the bridge every February 2.



Rettew's Mill/Keller's Mill/Guy Bard CB was between Akron and Ephrata and the only white span in the county. It was removed a few years ago and replaced by a concrete bridge, but it remains in mothballs. When funds are available, the intent is to move it a mile farther down the Cocalico Creek, replacing a rusting steel bridge