

THE CARD - Vol. 20, No. 6. Issue 234. June 2009.

Monthly Publication of the Lancaster County Postcard Club, Lancaster, PA.

Enjoying postcards through education and entertainment.

Next Meeting: June 15, 2009, Farm & Home Center. Buy, Sell, Trade from 5:30 pm. Meeting - 7:00 pm.

Yearly membership is \$10 (\$5 for each additional member at the same address.)

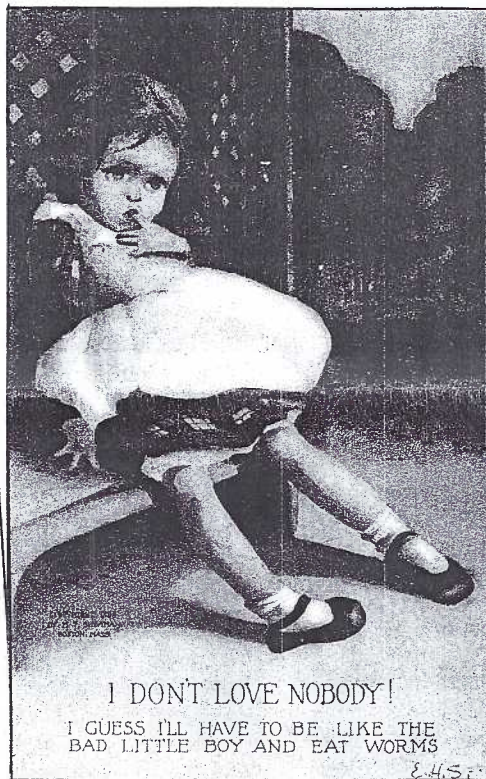
Membership chairman: Richard Pendergrast, 950 Willow Valley Lakes Dr., I-506, Willow Street, PA 17584.

LCPC c/o 2009 Editor: Jim Ward 1795 Kleinfeltersville Rd. Stevens, PA 17578-9669

Club website: www.playle.com/clubs/lanaster or Google search: Lancaster County Postcard Club

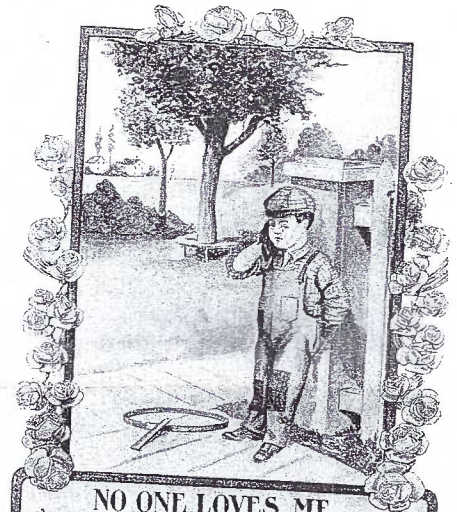


NO ONE LOVES ME
I AM GOING INTO THE
GARDEN AND EAT BUGS.
YESTERDAY I ATE TWO
BIG ONES WITH LONG
PINCHERS.



I DON'T LOVE NOBODY!

I GUESS I'LL HAVE TO BE LIKE THE
BAD LITTLE BOY AND EAT WORMS



NO ONE LOVES ME.
I'M GOING INTO THE GARDEN TO
EAT WORMS.
YESTERDAY I ATE TWO SMOOTH
ONES AND ONE WOOLLY ONE.

It's June!

Who doesn't love the warm weather, the flowers, and the songbirds? Love is really in the air!

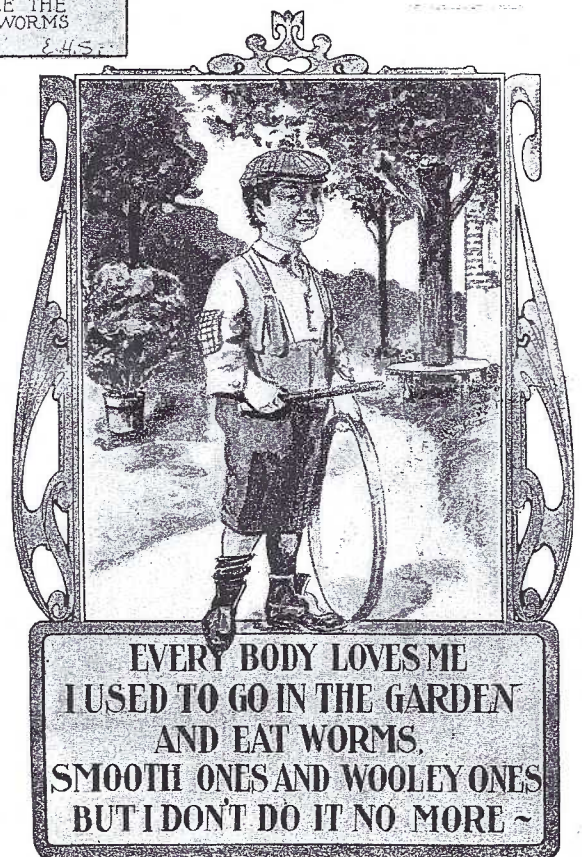
Evidently our postcard youngsters hold different views. Three of them have decided that worms and bugs are the only way out of their rejections of love.

How can you help? Show them how to dig for worms. Help them collect some bugs, take them fishing! That should make them feel better about the world - and themselves, witness our fourth card (same boy as in Card #3.)

The upper right card is by Bellman Assoc., Chicago. M. T. Sheahan of Boston published the only little girl in our group. Cards #3 and #4 bear a 1906 copyright by F. J. Smith.

Local Covered Bridges

In 2002, Bob Shirk, a former LCPC member, photographed and published a set of 40 full-color PCs of identified covered bridges of Lancaster County. The set was \$10. The next year Bob continued the coverage, plus a few in Chester County, for a total of 50 more different views that sold for \$17.50. Jim Ward will have these sets - a total of 90 views - available at the June picnic and the next few meetings. The double set (90 postcards) is now priced at \$10 total.



EVERY BODY LOVES ME
I USED TO GO IN THE GARDEN
AND EAT WORMS.
SMOOTH ONES AND WOOLEY ONES
BUT I DON'T DO IT NO MORE ~

COPYRIGHTED 1906 BY F. J. SMITH

*It could smile like this fellow
If a letter from you I get.*

May Meeting

May found 56 members and guests attending. The following were set up and selling (at overflow tables) from 5 PM – Betty Sowers, Ruth Moyer, Al Schaub, Bill Buckwalter, Tom Schaum, Bob Kramer, Marie Schurz, Jim Ward, Ray Dennis, Mike Middleton and Bill Miller.

Tom Beck's stroll around center city Lancaster was much appreciated. The PowerPoint presentation was excellent (with assistance by Betty Beck). Gwyn Fulmer won \$30 in the 50/50. Helen Fry and Sharon Gromis won \$3 club cash cards; Jim Brodt won Hershey Park discount tickets and Betty Beck won a New Year's postcard. Congrats to all and a big "Thanks" to the donors.

May Meeting Discussions

The Executive Board (Directors and Officers) had its first meeting of 2009 in May. It decided to amend monthly competition prize rules (see below). It also decided that since the current membership year is complete, a Member Roster will be made available on a request basis, rather than publish it in *The Card* as has been done in the past. You should contact the Membership Chair, Dick Pendergrast (see masthead on page 1) if you wish a copy of the roster.

The EB also considered eliminating our library from lack of use. It suggested returning donated books and ridding the remainder of the library through auction. Due to strong objections from several members, and the discussion that followed, doing away with the club's library has been tabled.

Several steps may just remedy the present situation: 1) A future issue of *The Card* will include a complete list of the Library for all members. 2) Help in moving the Library cart from our downstairs storage area to the meeting room is an urgent need. 3) Displaying at least some of the books prominently at the meeting will be tried as well. *Our library is a valuable club asset. It's paid for. Members - both novice and advanced - can benefit from borrowing a book for 30 or 60 days. Try it. You may just like it. Learn something new about postcards.*

May Card Competition

The Executive Board decided, in the interest of saving time from tie vote re-counts, to award duplicate cash prizes where applicable. (See 3rd Prizes below.)

May's subject was **Selling or Giving Flowers and Flowers** in general.

- 1st Place** Jim Ward Froggie's Floral Present
2nd Prize Bill Buckwalter Diffenbaugh Flower Store
3rd Prize Shirley Summers Demuth's "Pink Tulips"
3rd Prize Harold Moyer "I Bloomed Out"
3rd Prize Carol Dennis Memorial Day Boy w/flowers

Honorable Mentions

- Ray Dennis Schmucker Girl with Roses
 Johanna Gingham Street Flower Vendors in S.F.
 Betty Gregg "A Toast"
 Jere Greider Antiquing Dipped Flowers
 Bob Kramer N.Y. State Floral Exhibit
 Betty Sowers Lady Beneath a Spring Flowering Tree

Walter Mowrer

James Tanis

Jan Weitzel

Gisela Withers

Bob Zink

Children with Flowers

Dutch Flower Girl

"To Greet Thee"

Flowers for Grandmother

Lockard's Gardens, Mountville, PA

Thanks to all contributors and especially to those who focused on the specific subject. For the remainder of 2009, the Exhibit Committee may offer alternative methods for presenting cards as well as considering more specific subjects.

For the June picnic the subject is **Two by Two. board**. This gives us practice for composing August Expo exhibits. Those categories are Animals, Children, Holidays and Foreign.

New Members

We welcome these new members to LCPC -

Member 786 Katharine Fogie

1508 Nissley Road, Landisville, Pa. 17538.

Members 787 and 788 Elmer and Helen Fry

33 Heritage Road, Akron, Pa. 17501.

(Our membership is considerably lower than these numbers suggest. Many members have been lost to attrition over the last twenty years.)

June Picnic/Meeting

When – Sat., June 20. Rain date is Sun., June 28; if in doubt, call Dede at 392-395, or the Heims, 684-6533.

Where – Bud and Barbara Heim's home, 783 Old Chickies Rd., just north of Columbia.

How – Rte. #30 north on #441, first right (Breezyview Rd.), left at stop sign. Heim's driveway is at 4th house on right.

Program – Arrive from noon on. Meal will be at 3:30. Members should bring hot or cold food to share, as well as their own chairs. LCPC provides place settings and beverages. No program is planned. If you wish, you may bring PC albums to share. Members should bring their own tables if they wish to set up and sell.

Future Postcard Show

York Post Card Club will have its annual show on **Sat. July 11 from 8:30 to 4** at Aldersgate Church, Tyler Run Rd. Take Exit 16B from I-83 south of York. Turn west one block. Adm. is \$2, but just \$1.50 with the enclosed adv. card. Several LCPC members sell at this York show. Exhibits, a/c and light refreshments on the premises.

Follow-Up

In the May *Card*, we mentioned that the Rettew's Mill/ Keller's Mill Covered Bridge was in storage and would be moved "when funds are available." They are now available! Bids will be taken in Aug. and re-building the only white CB in our county will commence next spring. It will be on Middle Creek Rd. between Rothsville and Meadow Valley Rds. It will replace a deteriorated iron bridge that crossed Middle Creek near its junction with Cocalico Creek. The covered bridge will be assembled on higher ground with new approaches to avoid high water.

Oops! If you save your copies of *The Card*, go back to the last issue (#233), and change the month from April to May. (I haven't fired my proof-reader...never will.)

An Alphabetical Sampling of Postcard Artists

By Dede Schaeffer

THE CARD June 2009 Pg. 3



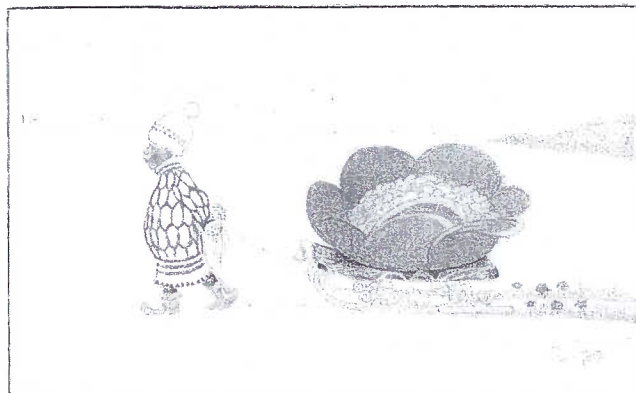
Albert Ernest Kennedy, born in London 1883, one of nine children, several artistically inclined and because of their finances, were unable to attend art schools, helped each other. Several grew up to be well-known artists. His work is mostly portrayed with scenes of dressed animals doing things people would do (or anthropomorphic). He had a working relationship with C. W. Faulkner Publishing Co. with his PCs and illustrated books. He died in 1963.



Sir Edwin Henry Landseer was an English artist very well known for his oil paintings that were reproduced on postcards. His paintings were of horses, dogs, and Victorian England – stable scenes and dramatized scenes of many breeds of dogs in a sometimes glamorous setting. They are usually chromolithographed and are published by Tuck, Misch & Stock, and Stengel. He lived from 1802-1973.



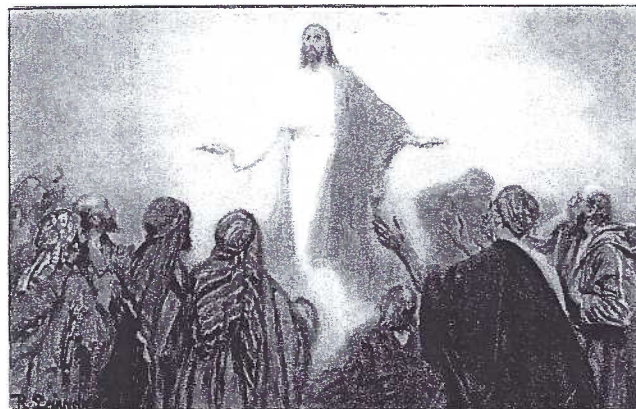
Marie Louise Kirk was born in Phila. When, we don't know, but she was a student of the Phila. School of Design and the PA Academy of Fine Arts. She received the Mary Smith prize at the latter in 1894. Her work shows up not only on postcards but book illustrations and calendars. Known mostly to portray children, they are done with beautiful faces and soft colors. She worked for National Art Co. as well as Tuck. When she passed is not known.



Carl Larsson, a Swedish artist, lived from 1853-1919. He was best known for his scenes of family life. He fills the postcard with detail as no other – literally dozens of images depicting in minute detail the items in a room! He also illustrated books and was a well-known artist of the time. His coloring technique was soft and muted. The fantasy postcard shown here is not the norm.



Kathe Kruse was not actually an illustrator but her work as a doll artist shows up on postcards as well as books. She is the German equivalent to the American photographer Harry W. Frees who posed dogs and cats for cards and books. The dolls were home-made and were introduced in a department store in Berlin in 1910. Her dolls show up on cards published by Tuck as well as many German publishers. She lived from 1883 to 1989.



Robert Leinweber was a German artist that designed a well-known postcard set of the time – The Holy Scripture in Pictures. He designed the cards and Max Eschner wrote the explanatory text. The Old & New Testaments were represented in five series of twelve cards each so, a grand total of 120 cards! Some have quite vivid coloration and sometimes a hazy quality to them so the images appear almost fuzzy (not in the printing). He worked mostly for German publisher. Websites tell us he lived from 1845 to 1915.

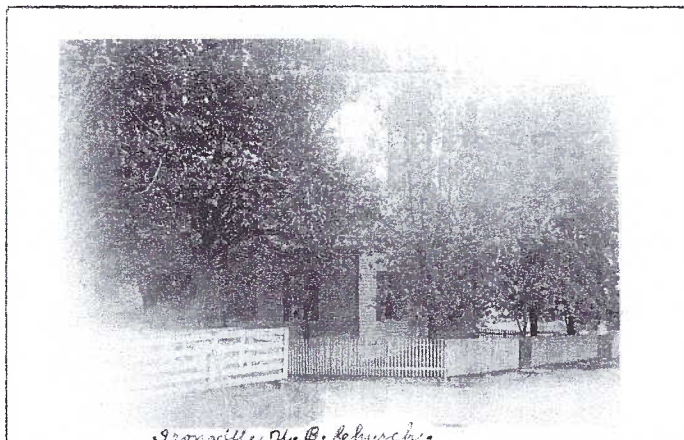
An alphabetical tour of locations found on postcards in Lancaster County by Jim Ward.



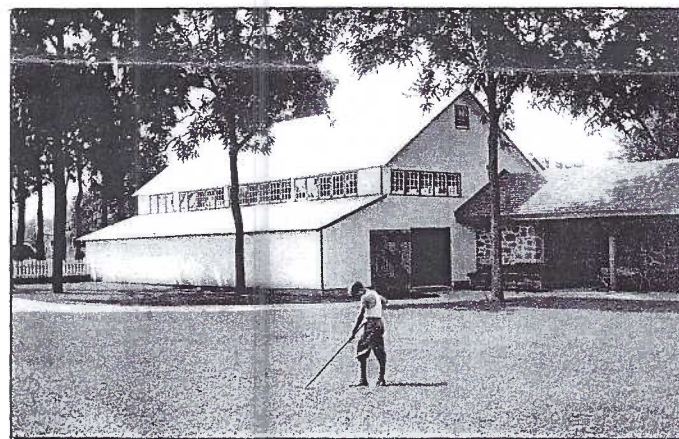
Intercourse RP Wrecked bridge at Hess's Mill.



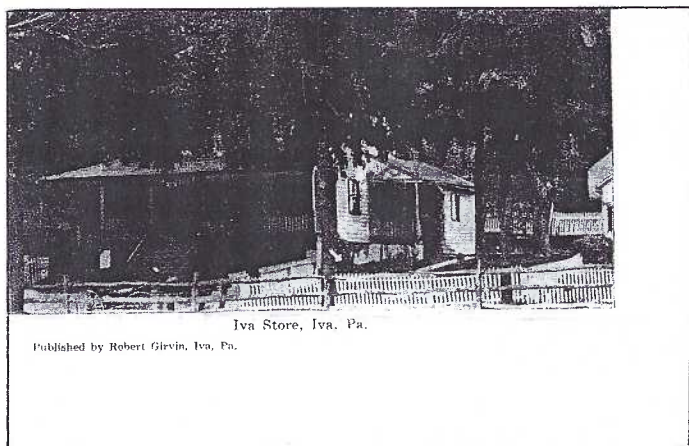
Kirkwood RP (1904-18) Flaharty res. on Rte. #472.



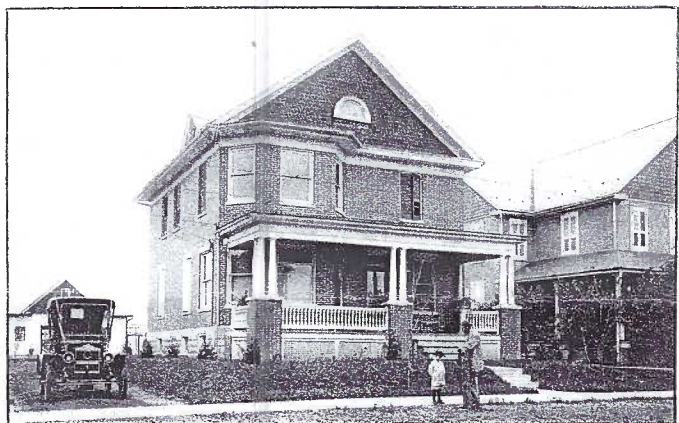
Ironville RP (1907-09) U. B. Church.



Landis Valley Implement barn RP by Henry Landis.



Iva Village store publ. by Robt. Girvin. 1911 PM.



Landisville RP (1903-14) Res. at 288 E. Main St.

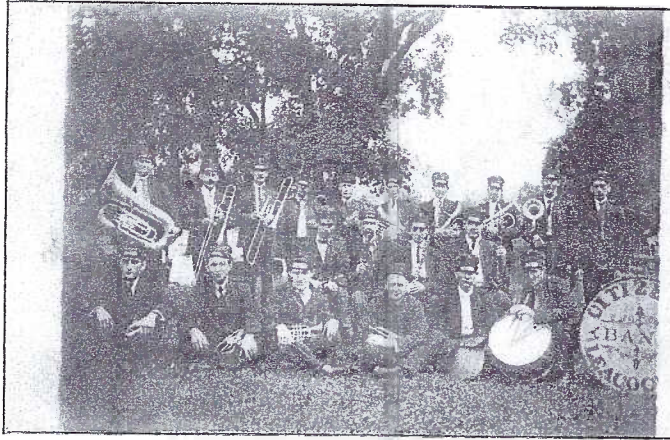


Kinzer RP Hotel and general store on Rte. #30.



LaParke RP (1925-40s) Seed Co. had its own P.O.

An alphabetical tour of locations found on postcards in Lancaster County by Jim Ward.

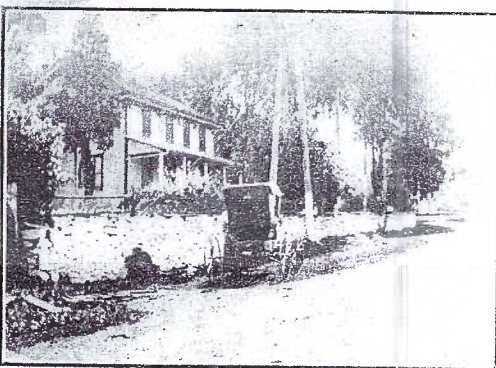


Leacock RP Citizens Band. U/b; no stamp box ID.



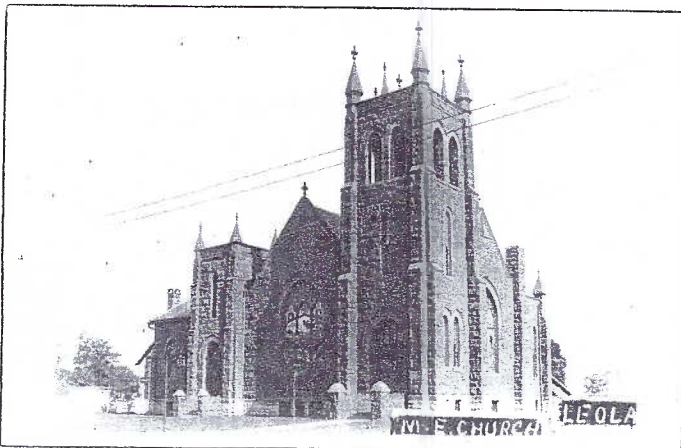
Benner's Barber Shop, Leaman Place, Pa.

Leaman Place RP Benner's Barber Shop, 1910 PM.

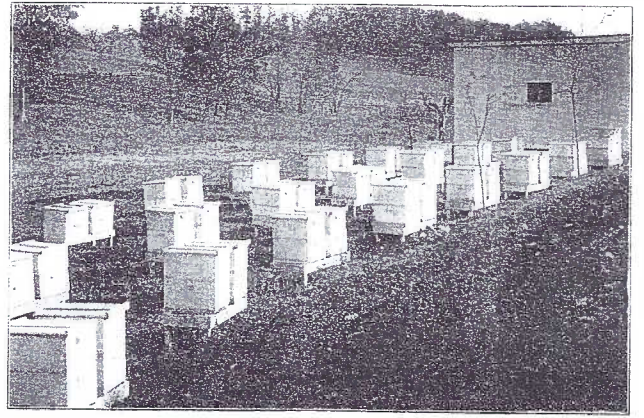


A COUNTRY HOME, LEDGER, PA.

Ledger Country Home in Salisbury Twp. d/b,'22 PM.

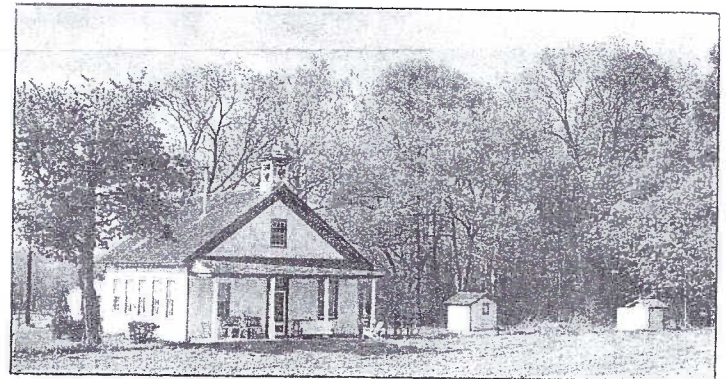


Leola RP (1904-20s) Methodist Episcopal Church.

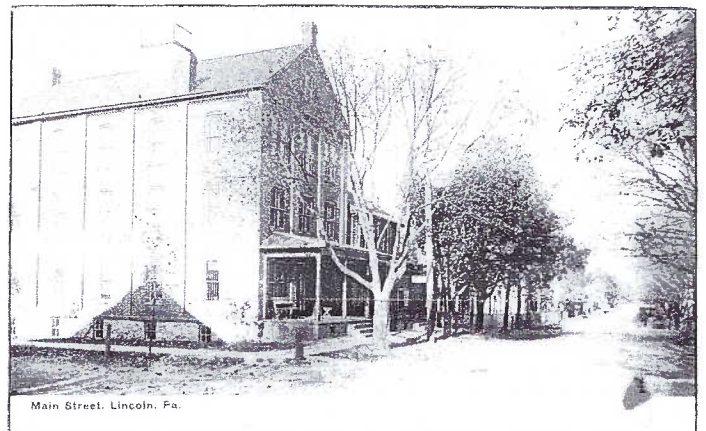


The Hostetter Lexington Apiary

Lexington Express Print d/b view of Hostetter Apiary.



Limeville Salisbury Twp. School was available to rent



Main Street, Lincoln, Pa.

Lincoln RP (1904-20s) Hauenstein Leaf Tobacco Co.



Lititz RP (1918-30) Lititz High School baseball team.

The Great Blue Ball Fire of 1909

By

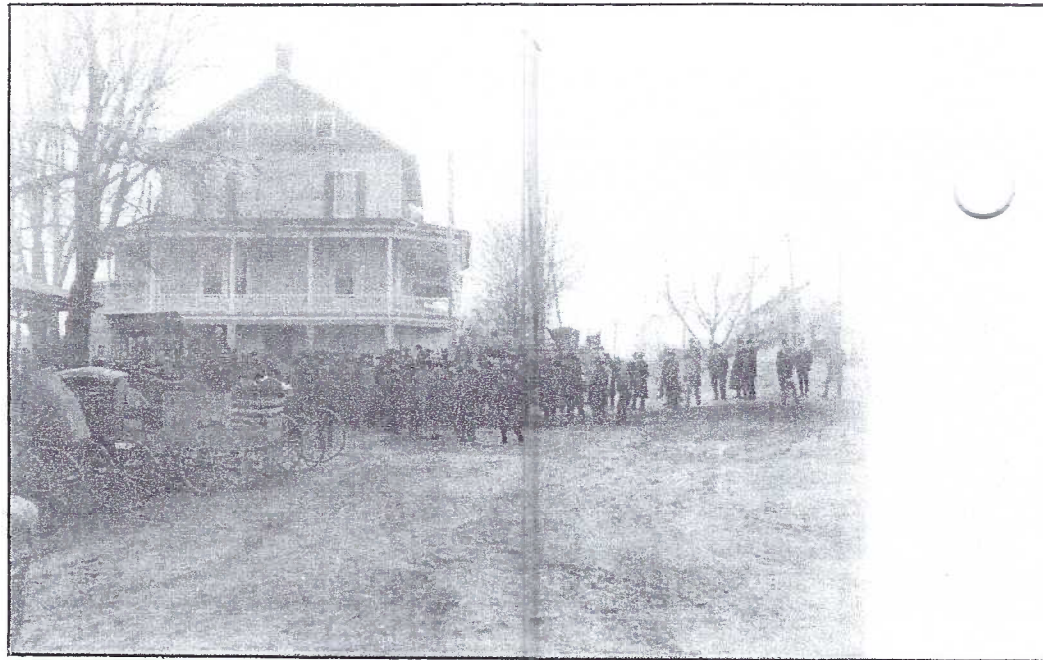
Brian Frankhouser

In June of 2009 the Blue Ball Fire Company marks its 100 year anniversary. The event that triggered the formation of this organization was described by the New Holland Clarion as "the greatest fire which eastern Lancaster County has probably ever known". In only a couple hours the conflagration destroyed a large sales stable including 42 horses and the home and business of a local blacksmith.

It was a Wednesday evening on April 7, 1909, at 11:50 PM when S. W. High, the proprietor of the Blue Ball Hotel, saw smoke coming from George Diller's Sale and Exchange Stable. He immediately set out to alert the town when the 11:00 trolley from Lancaster came through. The conductor "vigorously applied the air to the car whistle" when he saw the flames and woke up many of the local residents. The trolley proceeded to spread the news down the line to Terre Hill and then back to New Holland and Groffdale.

The fire began on the second floor of George Diller's stable and was fed by 50 tons of hay and six tons of straw that was stored there. Within half an hour of discovery, the sales stable roof collapsed. A high wind blowing from the southwest picked up burning hay and straw and deposited it up to a mile away. Almost everyone in the village was pumping water at the well, carrying buckets, or throwing water on the nearby buildings. The New Holland fire fighters spent most of their time saving Peter Shirk's Blue Ball Machine Works, which caught fire several times. By 2:00 AM the fire had burned itself out. All that was left of George Diller's stable was charred metal roofing, the burned remains of many horse carcasses, and a terrible odor. It was reported later that the fire was arson.

Club members wishing to contribute articles for *The Card* should hold them for 2010. Space in this year's issues is accounted for.



Blue Ball was an active livestock market since the 18th century. This real photo postcard shows a crowd gathering for an auction circa 1905. Left edge of photo shows the porch roof of the Blue Ball Hotel.



Looking towards Route 322 after the fire. The building in the background (right side) is the Blue Ball Coach Works.



A small group of men look at what's left of George Diller's stable the morning after the fire. The message on this postcard that was sent by Annie Kline of Fetterville reads, "This is Blue Ball fire a big livery barn with over 40 horses witch burned it is a wonder ful fire."