

# THE CARD - Vol. 20, No. 7. Issue 235. July 2009.

Monthly Publication of the Lancaster County Postcard Club, Lancaster, PA.  
*Enjoying postcards through education and entertainment.*

Next Meeting: July 20, 2009, Farm & Home Center. Buy, Sell, Trade from 5:30 pm. Meeting - 7:00 pm.  
 Yearly membership is \$10 (\$5 for each additional member at the same address.)

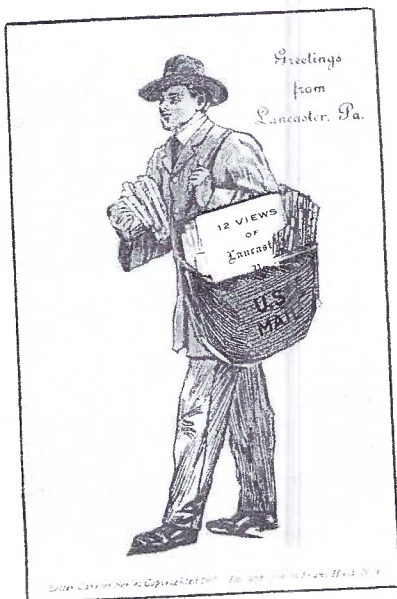
Membership chairman: Richard Pendergrast, 950 Willow Valley Lakes Dr., 1-506, Willow Street, PA 17584.  
 LCPC c/o 2009 Editor: Jim Ward 1795 Kleinfeltersville Rd. Stevens, PA 17578-9669

Club website: [www.playle.com/clubs/lanaster](http://www.playle.com/clubs/lanaster) or Google search: Lancaster County Postcard Club

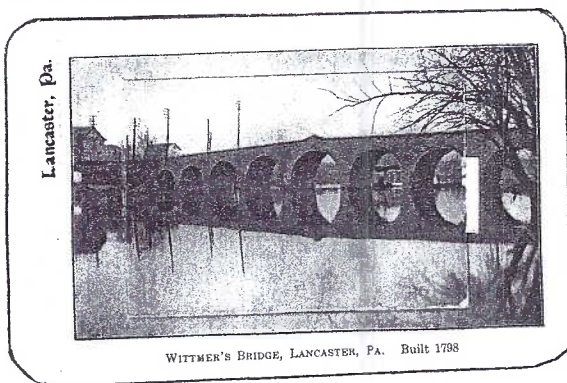
## Hidden Views

### Bargains in Lancaster Views

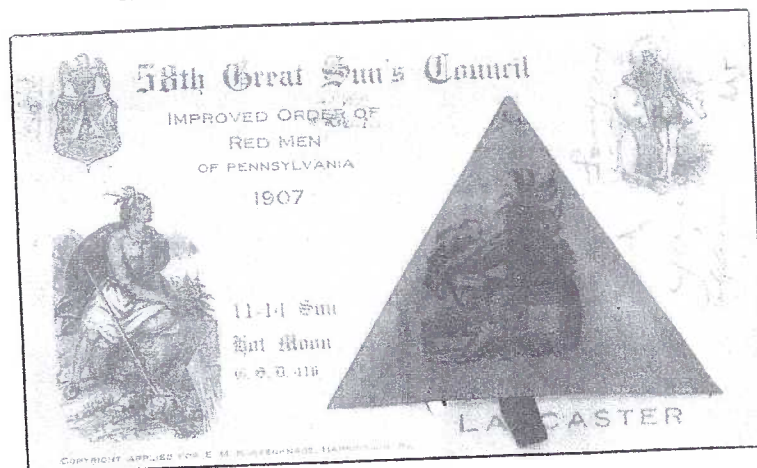
One of the earlier u/b novelty postcard types was the Hidden View. There was usually a handful of views in some Hidden View cards and Franz Huld's Letter Carrier Series (copyright 1907) was one of the most wide-spread editions. The mail carrier was all decked out in full suit, stiff collar, tie, and wide-brimmed fedora. His mail bag was a 3-d attachment and in it, folded accordion style, was a removable string of miniature local views. "Greetings from Lancaster, Pa." contains a bundle of 12 views: Post Office, Court House, YMCA Bldg., F&M Library, Entrance to Witmer's Bridge, Kate Long Home, Prison Grounds, Stevens High, Soldiers Monument (Penn Sq.), F&M Old Main, F&M Sci. Bldg., and St. Josephs Hospital.



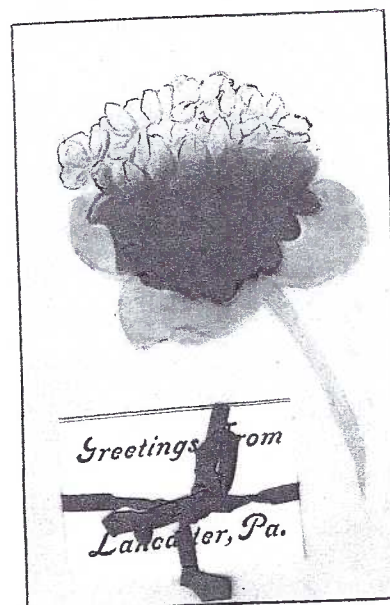
Containing ten larger (2 1/4" x 3") views is a series not identified but likely by Lancaster's L. B. Herr. In the example shown the cover view is of "Witmer's(sic)Bridge." Other cover views exist but those I've seen contain the same views: Court House, N. Queen St., Conestoga and Bathing Resorts, Woolworth Bldg., St. Paul's Reformed Ch., Penn Square, F&M Library, Trinity Lutheran Ch., Hamilton Watch Factory and Wheatland. It also has an undivided back.



Toughest to find is the u/b with "Copyright Applied for E. M. Kurzenkase, Harrisburg." This specimen was made for the 58th Great Sun's Council, Improved Order of Red Men of Pennsylvania, 1907. It met in Lancaster "11-14 Sun, Hot Moon G.S.D. 416." It has a leather triangle pocket that holds (in my example) 23 diff. views, most mentioned above, plus others of the early (pre-WWI) era. The views pull out with a small red ribbon. The PC is printed in red on a yellow card stock. It was mailed from Lanc, June 12, 1907.



Most commonly found of the Hidden Views for Lancaster are the floral cards by the U. S. Card Co. Some have views printed in sepia, others in black and white. The six views are always the same. Often the accordion pack is tied with a miniature ribbon. You'll find: YMCA, Court House Witmer Bridge, Rocky Springs, Watt & Shand and People's Bathing Resort. We've found these sprayed flowers: rose with bud, poppy, carnations, violets (shown) and a single open rose (?)



## June Picnic/Meeting

A very rainy forecast postponed the June picnic at the Heim's home until June 28 (when we still felt a few scattered drops.) We also missed sharing Cheryl Edward's surprise birthday cake which probably would have stretched for the 21 members who attended. We thank the Heim's for their hospitality.

## June Postcard Board Competition

**First** Jim Ward Penn Park Pairs  
**Second** Tom Beck (by proxy) Over-sized Couples  
**Third** Gisela Withers A Smorgasbord of Swedish Couples

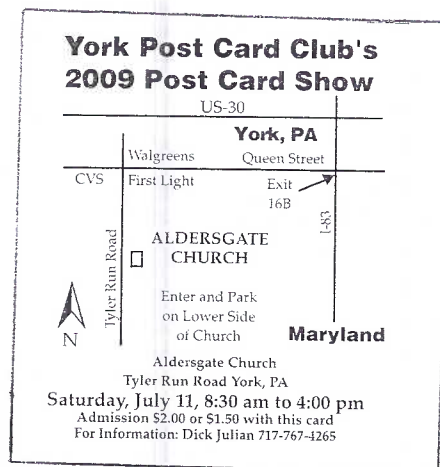
## July Meeting

Sometime during the July Free-for-All, Dede will call for a short "time out" to conduct vital business. There will also be a brief single card competition – the subject is **Great Moments in History**.

Only recently have questions been raised concerning the Free-for-All. "Free" means that members do not pay the regular \$2.50 fee for an 8-ft. table. On this night, any member may have a table, or portion of a table, at no charge. Due to strong response in the past for table space, you must call Doug Milliken (717-330-4062) if you wish to reserve a space. Table space is limited. Also, visitors are invited to buy at our Free-for-Alls as well as at our auctions, however, selling is a privilege reserved for LCPC membership.

## Future Programs for 2009

Aug. - No meeting. (Expo would be 2 days earlier).  
 Sept. - "Dutch Children – They Comprise the Largest Group of Ethnic Postcards" by James Tanis.  
 Oct. - "Lancaster Businesses on Postcards, continuing the Alphabet, from L to R", by Jim Ward.  
 Nov. - Blanche Nevin Impersonator.  
 Dec. - Christmas Party, "St. Nicholas and Santa Claus Images Prior to Postcards" by Jim Morrison.



## Future Shows

**July 11** – York PC Club – Aldersgate Ch., Tyler Run Rd., I-83, Exit 16B, 8:30 to 4. Discount PC last issue.  
**July 18** – Christmas Festival - Nat'l. Christmas Center 10-6, Holiday antiques, crafts; working artists.  
**July 18** – Allentown Antique Adv. Book & Paper 9-6.  
**July 31-Aug. 1** – Martin PC Show, Havre de Grace.  
**Aug. 15** – LCPC EXPO – 9 to 5. F&H Center. Work on your exhibit boards. Volunteer to help!

## Expo Help Needed

Jere Greider (717-285-5872) is asking for help -  
 Setting up the dealer tables Fri. eve. 6-7 pm, Aug. 14.  
 Selling tickets at the door of the Expo 9-4, Aug 15.  
 Tearing down the tables after the show 5 pm, Aug. 15.

## 2009 EXPO EXHIBIT ENTRY FORM

Mail or give this entry form to Walter Mowrer, Expo Exhibit Chair, on or before August 11, 2009. He can be contacted at 4614 Marietta Ave., Columbia, PA, 17512 or phone 717-684-5331. You are encouraged to enter all four categories. If you intend to use two boards (maximum) for any one category, please note this below. Include your title under the appropriate category.

Judges, selected from among the dealers on Saturday morning before the show, will consider the following criteria:

Postcard Information	1/3
Presentation and Originality	1/3
Condition, Completeness and Rarity	1/3

Exhibit boards should be at the Farm & Home Center Friday night, Aug. 14 between 6 and 7 PM; last possible entry time is Saturday, August 15, 8 AM. NO EXCEPTIONS. You may also give your boards to Walter beforehand if necessary. Do not cover your boards. LCPC will provide each board with a new plastic bag.

*First, Second and Third Place Awards* receive \$15, \$10 and \$5 cash in each category. *Best of Show*, chosen from the First Place exhibits, receives \$25. *Peoples Choice*, chosen by the public's ballots, receives \$25. Each entry receives a specially designed 2005 Expo Postcard Award.

I will have an entry in the categories listed below with these titles –

ANIMALS \_\_\_\_\_

CHILDREN \_\_\_\_\_

FOREIGN \_\_\_\_\_

HOLIDAYS \_\_\_\_\_

Member's Name \_\_\_\_\_

Phone Number \_\_\_\_\_

E-mail \_\_\_\_\_

## An Alphabetical Sampling of Postcard Artists

By Dede Schaeffer

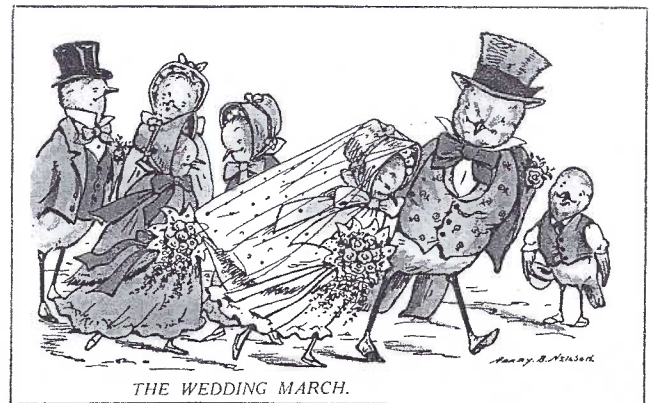
**Alfred Mailick** has been described as a German Art Nouveau artist. He certainly has fluid lines and an eye for detail. His illustrations on postcards cover a broad range – religious, snow scenes, animals, and people. Most elusive are his Germanic Santa Claus's, especially the Hold-to-Lights. Sometimes you have to look very closely for his signature. He was born in 1900 and flourished until 1918. His death has been noted as 1951 but that date is in question.



**Giovanni Nanni** was an Italian PC artist who lived from 1888 to 1969. He is best known for his designs of glamour-fashion PCs of beautiful women adorned with wonderful hats and splendid exotic fashions. But he also drew advertising, animals, political and Red Cross. He worked for publishers such as D. G. M., Esperia, and Pirelli.



**Irene Marsellus** worked as an artist for Ernest Nister who published in Nürnberg. Nister's designs came from England and were then made in Bavaria. It has been published that Irene was an American artist, but with a history of Nister's company it could be questioned. She designed beautiful cards, a lot of them fanciful children's mittens and pies with human heads; also Dutch children, but when producing greeting cards they became delightful die-cuts and are sought after today by both collectors and commercial artists. Her work was thought to flourish between 1910 and 1927.



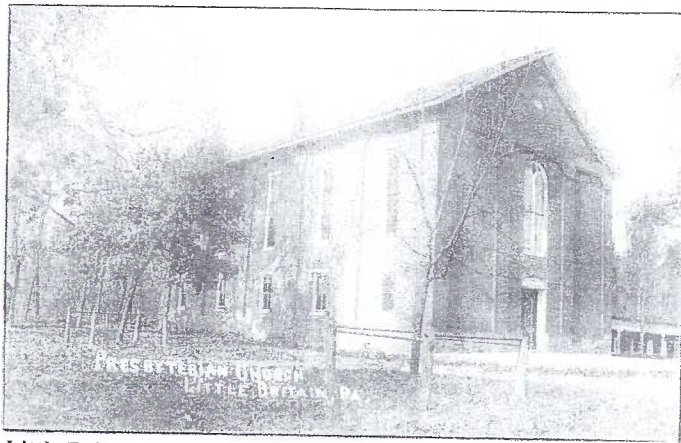
**Harry B. Nielson** was an English illustrator whose work was best known from 1895 to 1915 for such publishers as W. Lyon, Savory, and Charles Voisey. His designs were comical and fantasy, and usually done with animals doing things people would do (anthropomorphically).

**Hilda T. Miller** was a known English artist who lived from 1876 to 1939. When she met her future husband he introduced her to her first publishing company, Liberty. She drew proper children that were incorporated into designs for advertisements, calendars, greeting cards, and prints as well as postcards. Later she became affiliated with C. W. Faulkner Publ. and her work literally blossomed. She drew fantasy-type children as well as fairies and nursery rhymes.



**Kay Nixon** was an accomplished well-traveled English artist who lived from 1894 to 1988. Teaming up with Dorothy Newsome Glenn, she collaborated on books, magazine illustrations including 34 color posters of animals and birds for Indian state railways, touring the country at their request. While there she met and married her husband who was serving in the British Army. They lived there 25 years. She loved drawing rabbits and did a series of six Alice in Wonderland postcards for C. W. Faulkner. One is shown here.

An alphabetical tour of locations found on  
postcards in Lancaster County by Jim Ward.



Little Britain RP (1904-18) Presbyterian Church.



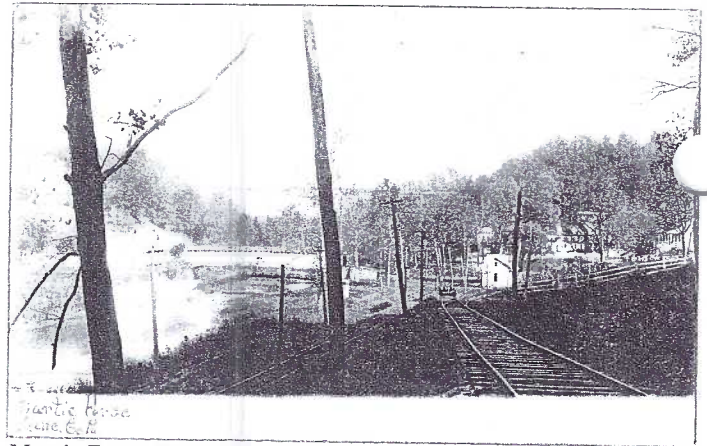
Locust Grove RP Fishing party so. of Columbia Pike.



Manheim RP (1904-20s) Ensminger Drugs & Photos.



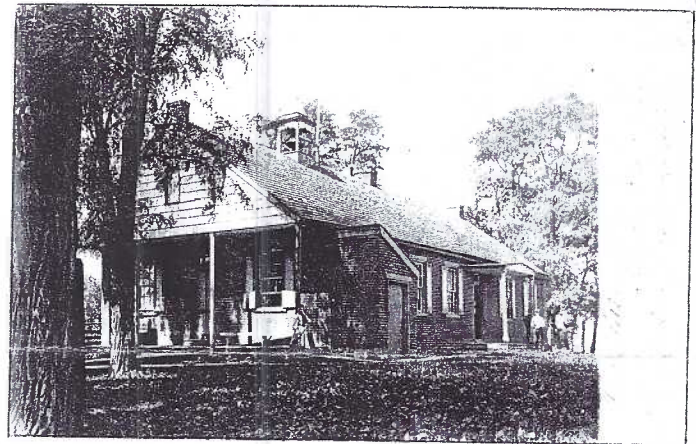
Marietta RP (1907-20) Hotel Marietta Old Home Wk.



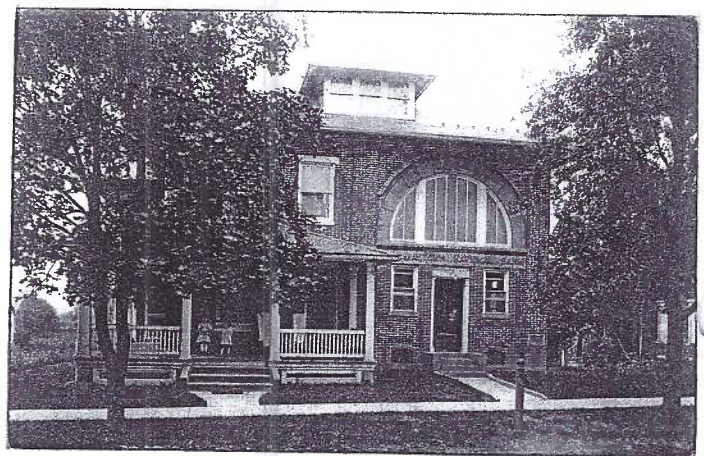
Martic Forge RP 1904-20) C. bridge, trolley and RR.



Martindale RP (1904-18) Treisch's Blacksmith Shop.



Mascot RP Upper Leacock Twp. School. 1906 PM.

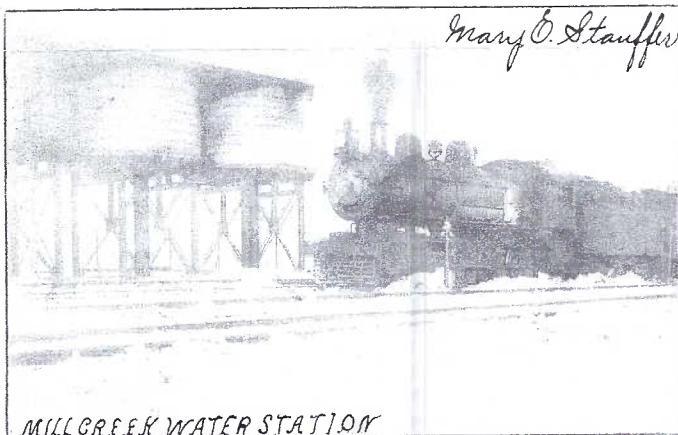


Maytown RP Maytown National Bank. 1914 PM.

An alphabetical tour of locations found on  
postcards in Lancaster County by Jim Ward.

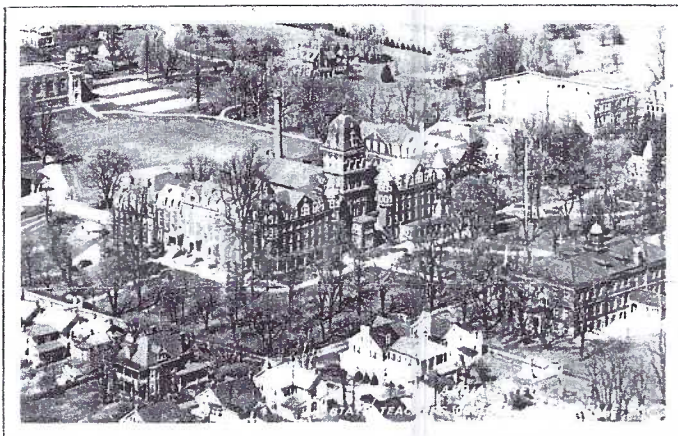


McCall's Ferry RP (1904-18) Frey's store and residence.

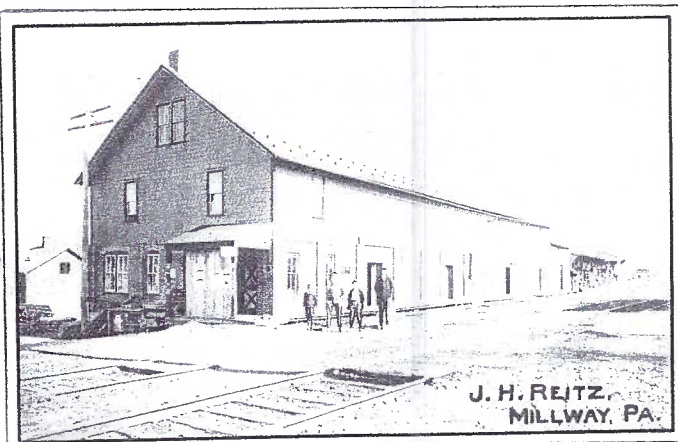


MILLCREEK WATER STATION

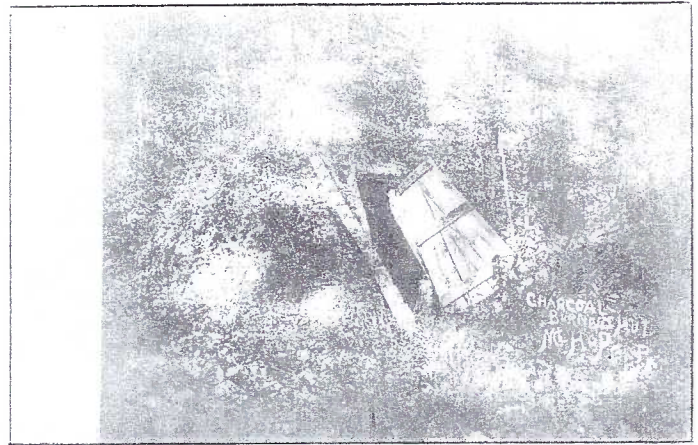
Millcreek RP RR water station north of Rte. #340, 1907 PM.



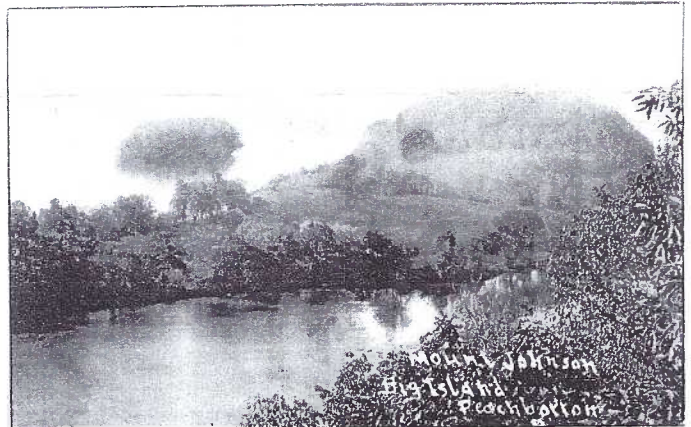
Millersville RP Aerial view MSTC campus; 1953 PM.



Millway RP (1904-18) J. H. Reitz hardware business.



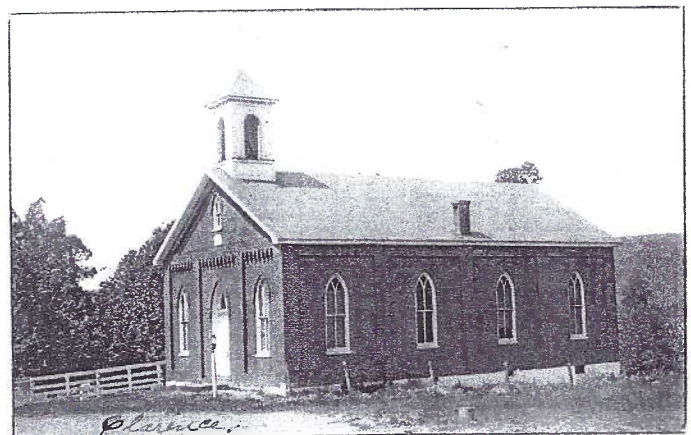
Mt. Hope RP (1905-08) Charcoal burner's hut.



Mt. Johnson RP Big island in Susquehanna River. 1912 PM.



Mount Joy RP Wm. D. Easton's Dairy Wagon. Undated.



Mt. Nebo RP (1904-18) Methodist Church.

LANCASTER COUNTY POSTCARD CLUB LIBRARY

Borrowing books from our club library is a member privilege. They hold thousands of facts and new ideas about postcards. Try a book or two. You may just like it!

Subject	Title	Author
<b>ARTIST</b>	The Artist-signed Postcard The Artist-signed Postcard Price Guide, 2 <sup>nd</sup> ed Bessie Pease Gutmann Guide to Artists' Signatures and Monograms on Postcards Philip Boileau: Painter of Fair Women Postcards for Pleasure #1 Tom Browne Postcards for Pleasure #2 Lance Thackeray	Forrest D. Lyons, Jr. J. L. Mashburn Karen A. Choppa Nouhad A. Saleh Dorothy Ryan Ken Lawson/Tony Warr Tony Warr/Ken Lawson
<b>GENERAL INTEREST</b> No Price Guide	Collecting Picture Postcards: An Introduction A Directory of Postcards, Artists, Publishers and Trademarks The Encyclopedia of Antique Postcards A History of Postcards How to Price and Sell Old Picture Postcards The Picture Postcard and Its Origins Picture Postcards Picture Postcards of the Golden Age Pictures in The Post The Postcard Century Real Photo Postcards: The Life-Size Edition	Anthony Byatt Barbara Andrews Susan Brown Nicholson Martin Willoughby Roy Cox Frank Staff C. W. Hill Tonie and Valmai Holt Richard Carline Tom Phillips Robert Ward
<b>GENERAL INTEREST</b> With Price Guide	Picture Postcards in the United States 1893-1918 (2 copies) Pioneer Postcards The Postcard Price Guide, 4 <sup>th</sup> ed Sports Price Guide, 1 <sup>st</sup> ed Standard Postcard Catalog (2 copies)	George and Dorothy Miller J.R. Burdick J.L. Mashburn J.L. Mashburn James Lewis Lowe
<b>HOLIDAYS</b>	4 <sup>th</sup> of July Celebration in Lititz Halloween: Whitney List Lincoln Postcard Catalog Postmarked Yesteryear - Art of the Postcard Holiday Vintage View of Christmas Past Wunsch Halloween Postcard Checklist	R. Ronald Reedy C.J. Russell James L. Lowe Pamela E. Apkarian-Russell James S. Morrison Hazel Leler
<b>LOCAL INTEREST</b>	100 Years/Camera Scenes - Eastern Lancaster County The Card (issues of LCPC 1989 - to date) The First Five Years (LCPC History) Lancaster County Postcards: Windows to Our Past - V.1 (2 copies) Lancaster County Postcards: Windows to Our Past - V.2 (2 copies) Landis Checklist Roadside America Miniature Village Checklist	Lancaster County Bicentennial Committee Jim Ward and Staff Jim Ward LCPC Members LCPC Members LCPC John Allegor
<b>PUBLISHERS</b>	The American Postcard Guide to Tuck Bamforth Postcard Catalog The Dexter Postcard Story The Picture Postcards of Raphael Tuck & Sons Publishers Trademarks Identified	Sally S. Carver Robert Scherer/Bertram Silman Thomas A. Dexter J.H.D. Smith Walter Corson/James Lowe
<b>SPECIALTY SUBJECTS</b>	American Advertising Postcards 1890 - 1920 American Exposition Postcards 1870 - 1920 Black Postcard Price Guide, 2 <sup>nd</sup> ed The Comic Postcard in English Life Erotic Postcards Fantasy Postcards w/price guide Larger Than Life - The American Tail Tale PC 1905-1915 A Picture Postcard History of Baseball Prairie Fires and Paper Moons 1900-1920 Propaganda Postcards of World War II Theatrical Postcards, A Collector's Guide Till the Boys Come Home Wish You Were Here (Tour of America's Hotels During Golden Age)	Frederic and Mary Megson Mary Megson J.L. Mashburn Frederick Alderson William Ouellette/Barbara Jones J.L. Mashburn Cynthia Rubin/Morgan Williams Ron Menchine Hal Morgan/Andreas Brown Ron Menchine Richard Borynge Tonie and Valmai Holt Barry Zaid
<b>TRADE CARDS</b>	An American Enterprise Cameo Cards and Bella C. Landauer	William F. Mobley The Ephemera Society of America
<b>TRANSPORTATION</b>	Lincoln Highway - First & Second Editions A Picture Postcard History of U.S. Aviation Rail Mail (A Century of American Railroad on Picture Postcards) Railroads Postcards in the Age of Steam Trolleys and Streetcars on American Picture Postcards U.S. Steamships: A Picture Postcard History	Brian Butko Jack W. Lengenfelder Geoff Stunkard H. Roger Grant Ray D. Applegate Frank O. Braynard
<b>VIEWS</b>	Gettysburg Vintage Postcard Views A Pennsylvania Album 1900 - 1930 Philadelphia in Picture Postcards 1900-1930 Postcards from Kew	James D. Ristine George Miller Philip Jamison, III Gwilyn Lewis

Recent additions: Real Photo Postcard Guide  
Destinations/Trolleys/So. California

Bogdan and Weseloh  
Titus-Bunte