

# THE CARD - Vol. 20, No. 12. Issue 240. December 2009.

Monthly Publication of the Lancaster County Postcard Club, Lancaster, PA.

Enjoying postcards through education and entertainment.

Next Meeting: Dec. 21, 2009. Farm & Home Center. **Christmas Party. We eat at 6 pm sharp!**

Yearly membership is \$10 (\$5 for each additional member at the same address.)

Membership chairman: Richard Pendergrast, 950 Willow Valley Lakes Dr., I-506, Willow Street, PA 17584.

LCPC c/o 2009 Editor: Jim Ward 1795 Kleinfeltersville Rd. Stevens, PA 17578-9669

Club website: [www.playle.com/clubs/lanaster](http://www.playle.com/clubs/lanaster) or Google search: Lancaster County Postcard Club

AMERICAN RED CROSS



A MERRY CHRISTMAS



**Clockwise:** An uncommon Am. Red Cross PC with Santa and Father Time in silver and red; Merry Christmas, 12/12/04, from Holyoke, MA, to Limbach, Saxony; Fröhliche Weihnachten, 12/25/05, from Dresden to Liebau (Lubawka) Poland; Xmas Christmas from 14 Santas; Fröhliche Weihnachten, 12/29/93, from Oberndorf to Hannover, Germany.



## November Meeting

Is it the economy and a chance to sell? Or is it renewed enthusiasm for our hobby and an opportunity to buy? Month after month, there's a great representation of member/dealers. Set up and selling in November were Ray Dennis, Kelly Fasnacht, Aaron Heckler, Bob Kramer, Mike Middleton, Ruth Moyer, Marie Schurz, and Jim Ward, several of whom were there at 4:30 along with buyers. Fact is, by 5:30, 29 members were present and the total compliment of 54 by 7 PM when President Dede Schaeffer called the meeting to order.

### 2010 Slate

The slate of officers will be announced and voted in at the December meeting. It includes Doug Milliken, president, Bob Zink, vice president, Gisela Withers, secretary, and Barabra Mowrer treasurer. Directors serving a second year are Tom Beck, Ray Dennis and Walter Mowrer; beginning their first year will be Shirley Summers, Dede Schaeffer and Steven Mumert.

### Volunteers and Appointments

Volunteers are still needed for Editor of *The Card* and Chair of the Monthly Competition. Gisela is willing to assist, but she is *much* occupied with taking minutes of the meeting's procedures. (She won't admit it, but she never gets a chance to shop for cards and socialize with the dealers, something she always enjoyed doing.) Also, if we're to continue work on a *20 Year History* of our club, we need volunteers in all aspects of compiling and composing information. See Doug Milliken.

### Prizes

Door prizes were won by Gwyn Fulmer and Kathy Kreider - each a \$3 club voucher, Jan Weitzel - holiday PCs, and Betty Gregg and Ruth Moyer - each a DVD of the new generator trip to Three Mile Island which Bud Heim made and contributed. Tom Beck won \$21 in the 50/50 which he will report on his 2009 tax report.

### Monthly Competition

The single cards were all *Smiles and Laughter* - the images, or response to the images.

First	Walter Mowrer	An Old Woman
Second	Gisela Withers	I Know Something You Don't Know
Third	Aaron Heckler	Dog with Pleasant Smile

### Honorable Mentions

Tom Beck	Dough
Carl Haffly	Smiling Girl
Bob Kramer	Smile
Kathy Kreider	The Cat Family
Doug Milliken	Smiling Monk
Harold Moyer	Smiling Moon
Dick Pendergrast	New Year Revelers
Sandra Shaub	Thanksgiving Pilgrim
James Tanis	Best Birthday Wishes
Don Tribit	Keep Smiling
Jim Ward	Do It Now! I Think I Just Did
Bon Zink	Mainzer's Dancing Cats

### Program

Jim Ward, substituting for the regularly scheduled program, concluded his presentations of **Lancaster Businesses That Used Postcards**, this time beginning with letters R to Z. We've seen over 300 examples since he began showing the local cards back in April of 2007. He has nearly 400 representative businesses and admits there are certainly more. Many new businesses still find postcards a fine way to advertise. Make a check-list of them all? Perhaps, and include in the list industries which were not in his four programs.



Two Swedish youngsters extend this invitation - "Maybe you'd like to taste our pepper cookie house It's so delicate and sweet with lots of red sugar."

## Christmas Party - Dec. 21

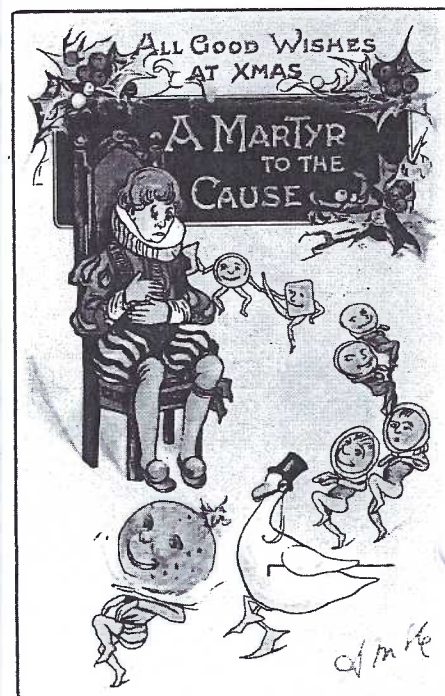
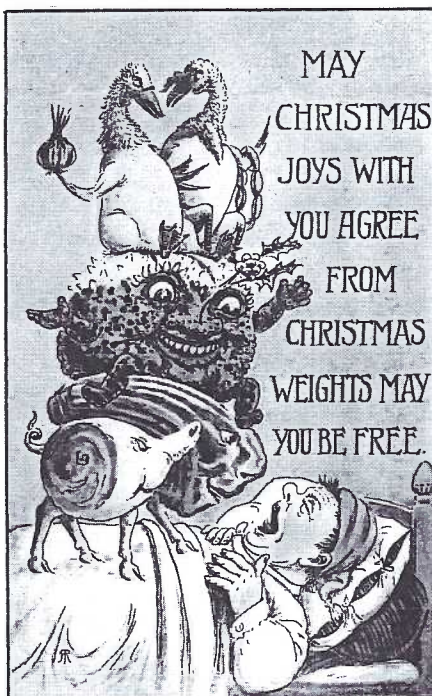
It's always a festive occasion when Jim Morrison offers a Christmas program. Now Jim concentrates on **Images of Santa or St. Nick before the Postcard Era**. His source of Christmas material seems endless and we're certain to see many unique images. If you have *very early* examples from old newspapers or magazines, bring them along to the Christmas meeting and share them with the members.

### Facts for our Annual Christmas Party

We rent the larger section of the F&H Center hall using round tables that seat six. LCPC provides place settings, utensils, and hot and cold beverages. Each member (family and guests are welcomed) brings a hot or cold dish and serving utensil, and enough to feed the number in their group. Promptly at 6 PM we serve ourselves at the covered dish smorgasbord.

The evening is devoted to Christmas, with a brief interlude to elect the slate of officers for 2010. Those who wish to participate in a gift exchange should bring an inexpensive wrapped gift. As ticket numbers are called, members who brought a gift may choose from the array on the Gift Exchange table.

December's Monthly Competition is a single card - *New Year Greetings*. January's single card subject is *Something White*.



Have plenty of food - but not too much!!

ARE YOU SURE YOU'VE MADE RESERVATIONS?  
To be certain, contact one of these Social Committee Members:  
Sharon Gromis at 717-892-6864 or  
Carol Dennis at 717-290-7948.



## An Alphabetical Sampling of Postcard Artists

By Dede Schaeffer



X for Christmas is seemingly appropriate for December. The X in Christmas stands for the Greek letter Chi, the first letter in the Greek word for Christ. Over time the letter X came to stand for the name for Christ. *Left* - The Chinese Madonna and Christ came from the Collection of the Cleveland Museum of Art Photograph Library. *Center* - A 1938 US postcard by Basevi, Inc. Note the inclusion of the mistletoe and Santa doll. *Right* - *The Flight into Egypt*. Jesus, Mary and Joseph leave to avoid the massacre of the innocents by King Herod. This card was produced by Nister and is done on full silk - quite expensive for the day.



### De fust Robbery.

When Adam woke up from his sleep,  
His eyes jumped from deir sockets!  
He found he'd got a wife to keep. —  
An' she'd been froo his pockets!

Hayward Young.

Walter Hayward Young was an English artist who lived from 1868 to 1920. His pseudonym was Jotter and most of his postcards were signed that way. His work was prolific and varied, including advertising, children, comics, landscapes, military, pretty girls, etc. He worked for over two dozen publishers.

Zane. Unfortunately this is the only signed artist postcard I own that begins with the letter Z. It appears to copy the style of the artist Hansi and is titled *Vive La France*. It seems to depict the region of Alsace-Lorraine which borders on Germany. Could the storks denote the delivery of new babies?



So, I close my alphabet - X for Christmas, Y for New Year, and Z for new births and beginnings of the New Year.

Zat's all! Dede.

*Editor's Note:* LCPC members thank Dede for the contribution she made this year, fulfilling an offer to your editor to complete 12 pages of *The Card*, but more importantly, to introduce us to postcard artists, a major field of her expertise.

\*\*\*\*\*

\*\*\*\*\*

\*\*\*\*\*

\*\*\*\*\*

\*\*\*\*\*

In the spirit of the season, Dede offers the postcard images below with the following tongue-in-cheek captions:

Left - "Some of the Christmas purchases being made by serious postcard collectors."

Right - "Our club's Social Committee preparing for the Annual Christmas Covered Dish Meal."





## Can You Help?

James Tanis unearthed two handy real photo postcards and is looking for more information about them. What he knows is: Top RP card has an August 5, 1909 cancellation from West Nanticoke, PA. It was mailed to Master Raymond Weissinger at 116 West Ave, Mt. Carmel, PA. The message, "Raymond, this is our Automobile for the 4(th) of July. We will be coming down in this some day to see you.

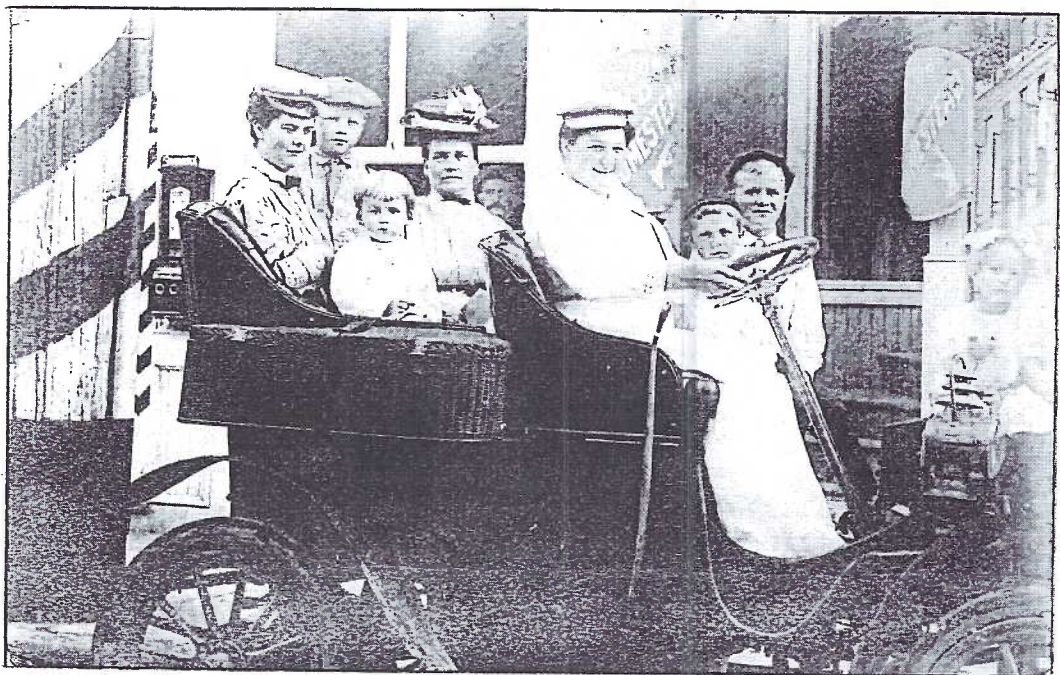
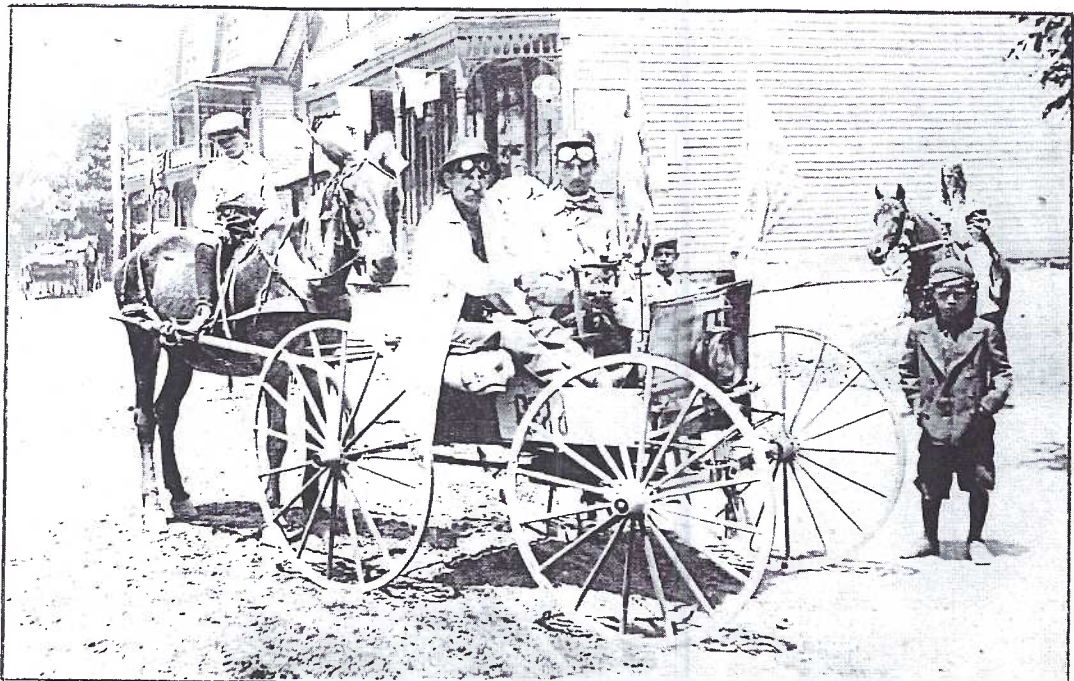
Master Chas. Wolfe"

Close inspection shows the 4-wheeled contraption was not an assembly line product. Its rear one-horse power engine is tied backwards to the wagon's rigging. The driver holds a steering tick that looks like a cane handle. A headlight is attached to the front" for night-time travel?

West Nanticoke today is barely more than a 1-horse town with only 6 or 7 streets. It's along the Tusquehanna River where Rtes. 11 and #29 meet southwest of Wilkes-Barre. Was the photo taken on Lamoreaux or Morgan St? No doubt those buildings are still standing.

James says the bottom RP card was with the Mt. Carmel (above) collection. It's unused and offers no clues except the name of the hotel, The Old Homestead. The caps worn by the driver and her companion in the back seat suggest they could have "borrowed" them from their gentlemen friends (in the Old Homestead tavern?) since they don't quite fit their noggins. With five youngsters, even the whimsical "driver" wouldn't dare take to the roadster on the road.

You can contact James at the Christmas party or 610-7285179 or [jrtanis@sdllifestyle.com](mailto:jrtanis@sdllifestyle.com).



## FOR SALE

*A Fine Gift for Yourself  
Or a Loved One*

### Dell laptop computer

Inspiron #1520 Pentium Dure Core. Jet black color w/Matte Finish.

2BG, DDR2, 667MHz 2Dimm

15.4 inch Wide Screen WXGA - LCD TrueLife

Intel Integrated Graphics Media Accelerator 3100

160G 5400RPM SATA Hard Drive

Microsoft Windows Vista Home Premium Edition

Dell Resource DVD Back-up

Adobe Acrobat Reader 9.0

Dell Wireless 1390 802.11 g Mini Card

85 WHr 9-cell Lithium Ion Primary Battery

Microsoft Office 2007 Home and Student Edition

Still under Extended Warranty (until Oct. 2010)

CD/DVD Writer (DVD+/-RW Drive)

High Definition Audio

Microsoft Word, Excel and PowerPoint

Extras -

\*Netgear 54 Mbps Wireless Router WGR614v7

\*Over-size lap desk w/wrist pad

\*Wireless mouse, besides laptop's touch pad

All Microsoft Up-dates to Nov. 28, 2009.

Cost on Oct. 26, 2007 - \$1267.79 plus PA tax.

Used for 3 LCPC PowerPoint Programs and less than 6 hours besides the programs.

**Will sell for \$750.**

Contact Jim Ward 717-721-9273

or at [midcreek@ptd.net](mailto:midcreek@ptd.net) before Dec. 20. Paid Adv.



## Letter to the Editor

### from LCPC Member #101

*The Card*, April 2009, tweaked my memory by the account (pg. 2) and picture of Lancaster Municipal Airport. When I was 12 yrs. old and my sister was about 18, she drove me out to the airport to see, and perhaps photograph, a mail delivery. I had just acquired a second-hand Leica from my cousin and was eager to test my skill with it. This would have been around 1936. Here's what happened:

The delivery was accomplished by dropping a bag of mail to the ground while almost simultaneously hooking a suspended bag of outgoing mail from a "goal post." The airplane, of course, did not land.

As we waited the arrival of the plane while sitting in the car I suddenly got the bright idea for a spectacular, no doubt publishable, photograph! I'd lie down under the bag to be collected, and snap a picture at the moment the hook suspended from the plane snatched it. Suddenly we heard the plane approaching, and I leaped from the car, sprinted to the spot, and lay prone directly under the bag. My sister, who almost immediately understood the problem, didn't have time to call me back. I, of course, would have ignored her, anyway. She told me afterward that she just slid down low on the seat, glancing sideways, holding her breath.

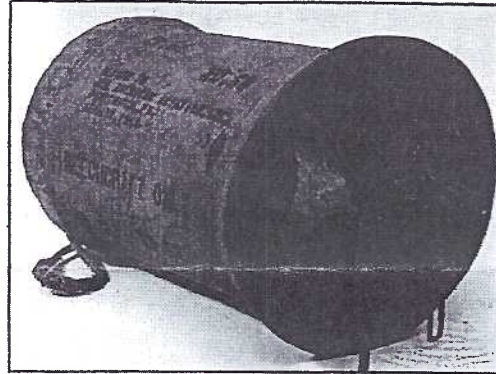
Well, it was all over in a blink. I snapped the photo at the moment of truth, and a split second later a loud thump nearby reminded me – I had forgotten the delivery! In fact, the dropped bag landed several yards away, but the thrill was keen.

Now, fast forward nearly fifty years. My sister and her husband gave me a shoe box of old photos they either didn't want or couldn't identify, and asked me to sort through and keep whatever I wanted. Later, as I perused the pile, I noticed a remarkable close-up of an airplane, slightly blurred, yet so close the whole plane did not show. The picture was apparently snapped from just under, as the plane went over. Nothing else was visible – a failed attempt to get a picture of an airplane, but where, why? I threw it out, along with all the other rejects. Weeks later, apropos of nothing I can recall, I *did* suddenly remember that day and that photo.

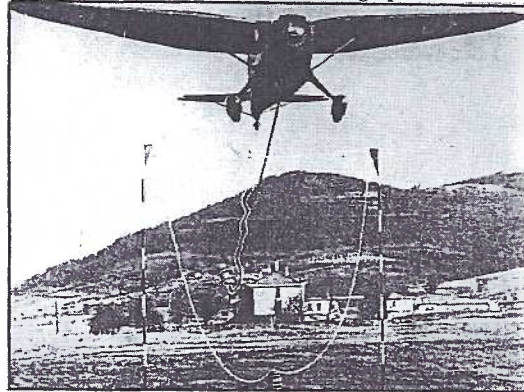
So now you've shared a seventy-odd year old event with a tiresome old gent in Maine. Thanks for listening!

*The following is from the National Postal Museum, a branch of the Smithsonian, and confirms Lew's boyhood experience. The museum photos further explain the mail exchange.*

"To deliver the mail, the flight officer lowered the mail container out of the bottom of the aircraft through a special opening. Just before reaching the poles he released the canister. Almost at the same instant an arm was lowered. The grappling hook snagged the hanging mail pouch then slid down the arm and caught the noose. Once the catch was made the flight officer activated the winding mechanism to reel the mail canister into the plane."



The mail was placed in a rubber container that was suspended between a pair of 15-foot-high posts.



The Stinson airplane is flying with its hook down, to pick up the mail in the container strung between hooks.

*Editor's Note:* Lew Frank, the author, is my brother-in-law. For several months I've tried (finally with success) to find pictures that further explain a fly-by pick up used in the early days of rural air mail delivery.

Thanks, Lew, for the memory.

## Sorting Hometown Views

For the beginning postcard collector, choosing ways to sort views of your hometown can be a daunting task. Here are some categories that might help. Choose just those that apply.

### My home town

Birds' eye views  
Center square  
Main street, other streets  
**Public buildings**  
Courthouse, city hall  
Post office  
Library  
Prison, jail  
Firehouses  
Water works, reservoirs  
**Transportation**  
Cars and highways  
Trolleys, trolley stations  
Trains, railroad depots

Planes, airports,  
Bridges – covered, steel, railroad  
Ferryboats, excursion boats  
Streams, rivers, canals  
**Education**  
Schools – public, private, academies  
Colleges, universities, seminaries  
**Religion and later life**  
Churches, rally days, camp meetings  
Hospitals, rest homes  
Cemeteries, monuments  
**Business, Industry, Agriculture**  
General stores, banks, small businesses  
Industries, quarries

Farms, agricultural products, implements  
**Residents, their homes**  
Private clubs, private homes  
Famous residents and their homes  
Personal family, relatives  
**Leisure time and recreation**  
Sports teams, fields, race tracks  
Bathing pools, tennis courts, etc.  
Parks – amusements, leisure walking, overlooks  
Camping – family outings, scouts, fraternal  
**Special events**  
Celebrations – annual, parades, anniversaries  
Dignitary visits  
Catastrophes – floods, fires, quakes



## Choo Choo Barn Strasburg, PA

### An Astounding Phenomenon

My friends will tell you I *never* exaggerate and I'm stingy with superlatives, but when I walked into the Choo Choo Barn and saw the 3000+ sq. ft. display and its minutia, I was overwhelmed. And the moving parts – not just the trains – were breath-taking.

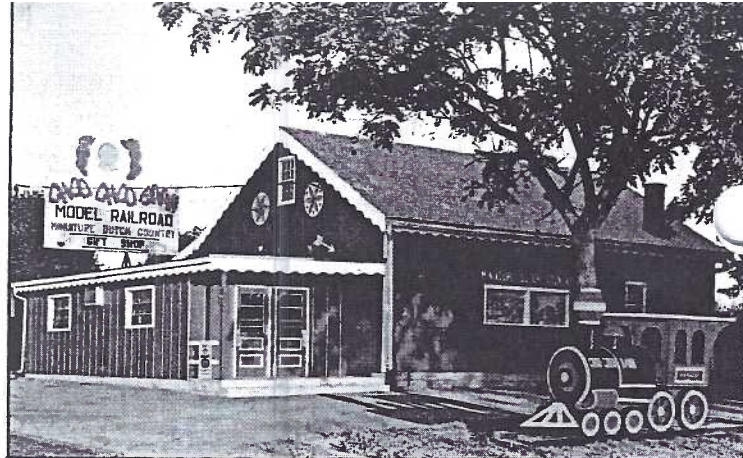
I'd heard of the Choo Choo Barn for more than 40 years, but its name implied (to me) for kids, kids, kids. How wrong I was. Kids can never appreciate the intricacies that George Groff began in 1961 and his son Tom has compounded and perfected since then. Exact-ing miniatures are there of The Willows, Dutch Won-derland, and Dutch Haven and, bless the Groffs, (in-cluding third generation Kristi), they've provided dozens of notes along your route that point to detailed happenings you'd otherwise overlook - the animated stubborn mule, the man on a chair teetering high a-bove the circus tent on the top of a sway pole, Amish pounding nails in the barn raising scene and dozens and dozens of others.

But, now to the purpose of the Choo Choo Barn in *The Card*. From those first days in 1961 until recently, the Groffs have placed an unrelenting faith in the use of postcards to sell their product. The accompanying checklist shows us that at least every five years they issued a new set of cards. Tom is quick to admit it's a need - to show newly constructed attractions. In fact, he's so familiar with the additions, he dated the card sets by looking at the sequence of new displays!

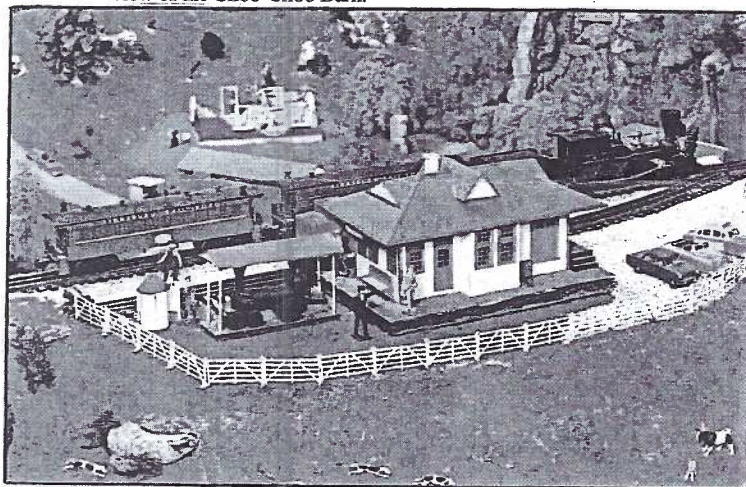
It took a little digging but Tom was able to give us the details collectors want to identify the Choo Choo postcards. We thank him for that and you might want to thank him or Kristi in person with a visit to the Barn. See the spectacular display and see for yourself that your editor doesn't exaggerate. By the way, the new by-pass around Strasburg avoids traffic in the village and takes you directly to the Choo Choo Barn.

## A Choo-Choo Checklist

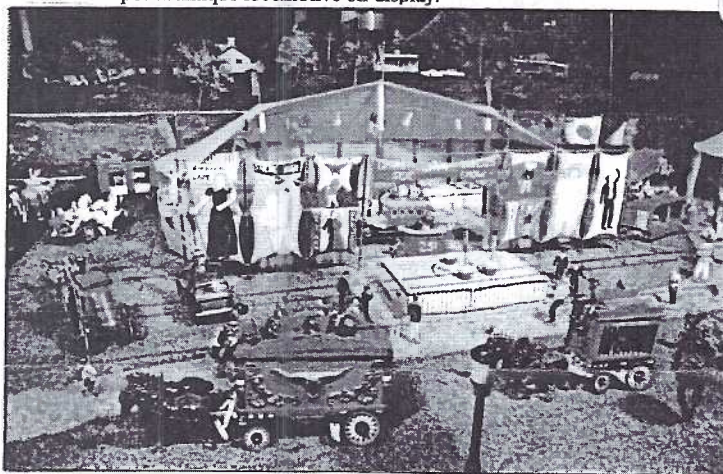
Local Publisher	Year (Approx.)	Printer	Description
Stel-Mar	1961	Dexter	Set of 4 -57941 to 57944 Black engine - lower left rev.
J. Hess	1966-67	Dexter	Set of 6 - 45111-C to 45116-C Blue engine - lower left rev.
E. Newswanger	1968-73	Dexter	Set of 7 - 11346-D to 11352-D Seven is the correct number of PCs - six close-up scenes and one "cover." No identifying symbol
Stel-Mar	1974-75	Dexter	Set of 10 CCB-1 to CCB-10 Stel-Mar now uses his own PC numbers, along with printer's numbers. Small engine - lower center rev.
Stel-Mar	1977-78	Dexter	Set of 10 CCB-11 to CCB-20 First continental size cards
Stel-Mar	1980-81	Dexter	Set of 10 CCB-21 to CCB-30 cc size booklet w/miniatures
Chas. Products	2004 A-V Designs		Set of 4 XC32-35, also cc size, Lionel logo on reverse



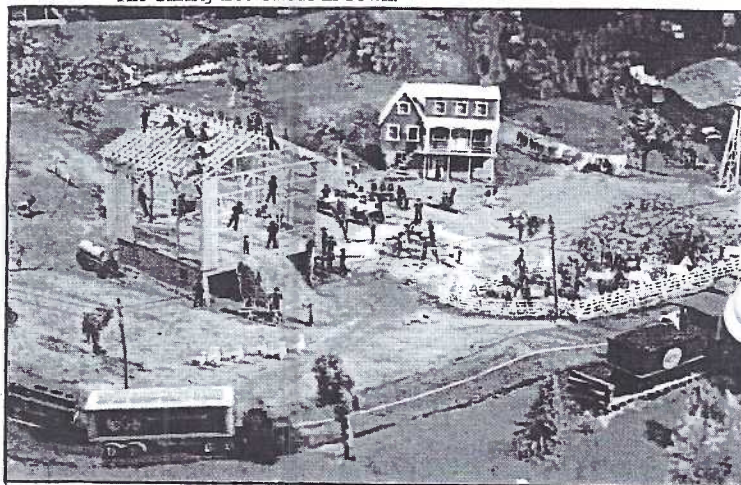
#45111-C Hess (blue locomotive reverse) has an exterior view of the Choo-Choo Barn.



#57942 Stel-Mar (black locomotive on reverse) shows a RR depot w/antique locomotive on display.



#155851 Stel-Mar (small locomotive on reverse) features "The Christy Lee Circus in Town."



#11347-D E. Newswanger shows a barn raising.

Have a Healthy New Year and a  
Happy Christmas to all, and to all a good-night!