

# THE CARD – Vol. 22, No. 1, Issue 243, January 2011

A Publication of the Lancaster County Postcard Club, Lancaster, PA

Enjoying postcards through education and entertainment.

Next Meeting: Jan. 17, 2011. Farm & Home Center. Buy, Sell and Trade from 4:30. Meeting - 7 PM.

Yearly membership is \$10 (\$5 for each additional member at the same address.)

Membership chairman: Richard Pendergrast, 950 Willow Valley Lakes Dr., I-506, Willow Street, PA 17584.

Club website: [www.playle.com/clubs/lanaster](http://www.playle.com/clubs/lanaster) or Google search: Lancaster County Postcard Club.

## December Christmas Party/Meeting

First, a big THANK YOU to Dede Schaeffer, Charlie Schiefer, Walter Mowrer, Sharon Gromis and Doug Milliken for preparing the room decorations and tables and an extra Thanks to Walter and Barb Mowrer for providing iced tea and coffee; to Dede an extra Thanks, also, for donating the 2 foot high tree center pieces. Thanks, also to Betty and Tom Beck for assisting Gisela Withers in her monthly task of conducting the card competition and taking notes as secretary of the entire affair. Many Thanks, indeed!

The potpourri of food was varied and very good, as usual – meats, veggies, salads and desserts and ample to serve the 49 members and guests who attended. We're sorry that "Santa Jr." (Jim Morrison) made only a brief appearance. The Gift Exchange went well followed by Gisela's story, "Stephan's Christmas," brief but heart-warming. Because of a near-loss of voice, Dede confined her program presentation to showing a new (to her) set of unusual winter images of mothers and children by artist **Achille Mauzan** and published in Italy. At the 11<sup>th</sup> hour Jim Ward substituted for Dede's planned program by showing three dozen Fantasy Christmas cards. They ran the gamut from candle faces to krampus to tomte and a prune man with a few New Years snowmen on the side. Jim thanks Jere Greider, Leon Rowe and Betty Beck for assistance in starting the Elmo and the projector. It's easy to forget the mechanics of these machines. We ought to use them at (nearly) every meeting,

## January Program

Speaking of which, the January program will be **Member Participation – a Show 'n Tell** session. Bring a favorite card to have shown on the projectors and tell us about the card in two minutes or less. **It's Anniversary Time!** Be sure to join us for a piece of 21- year old cake! (?)

Unfinished business from Pres. Milliken's term will be for **newly-elected President Bob Zink** (285-5342) to have these volunteers nominated and voted in for his term:

**Gisela Withers - Secretary**

**Barabra Mowrer - Treasurer**

### Directors

**Dede Schaeffer - 2011**

**Steven Mummert – 2011**

**Dick Pendergrast -2011** (He completes Shirley Summers' 2-year term as she is in a slow recuperation period.)

**Susan Glass – 2011 and 2012**

**Al Schaub – 2011 and 2012**

**Bill Seigford – 2011 and 2012**

We still need a Vice President. The job is to coordinate the club's programs and substitute if the Pres. is not here.

### Inclement Weather Information

In the event the weather is bad or the prediction is bad, contact one of these members to find out whether the weather will determine if we have a meeting or not –

Pres. Bob Zink	285-5342
Jere Greider	285-5872
Walt or Barb Mowrer	684-5331
Dede Schaeffer	392-3955
Tom or Betty Beck	627-7732
Jim Ward	721-9273

## Monthly Card Competition

Bells were ringing in December – on an even dozen single cards in our **Monthly Card Competition**. If you haven't joined the fun, try it this month. The subject is so easy – **"A Group Activity."** Think about it – in school or in church, at the dinner table, at a picnic, a party, a parade, or playtime. The possibilities are endless and our new president will have the table-top easel and display board there.

Here are December's entries:

<b>FIRST</b>	Dick Pendergrast	Münich Child Bell Ringer
<b>SECOND</b>	Walter Mowrer	Red-robed Santa with Bells*
<b>THIRD</b>	Dolores Rowe	Ringing in the Holidays

### Honorable Mentions

Harold Moyer	Bell Beauty
Ruth Moyer	Angel Ringing Bell

### Other Participants

Kay Feight	Angel in Evergreens
Jere Greider	Good Wishes
Carl Haffly	Liberty Bell
Katherine Meyer	Golden Bells
Sandra Shaub	Little Bell Booklet
Jim Ward	Big Bell on Miniature Card
Gisela Withers	Ring Out the News (a Kaleidoscope)*

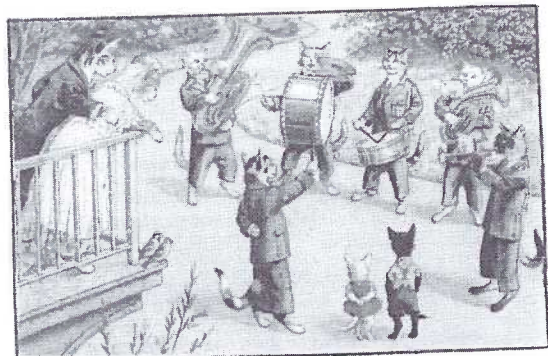
**Congratulations to all and Thank You for participating.**

\*These two cards went missing when the meeting concluded. It's very likely someone misunderstood and considered them as "freebies" along with advertising handouts on the same table. Please phone Walter Mowrer (684-5331) or Jim Ward (721-9273) to make arrangements for their safe return. Thanks.

The **Monthly Competition Committee** announces these subjects for 2011 (plenty of time to prepare your entry) -

January -	<b>A Group Activity</b>
February -	<b>Romance or Valentines</b>
March -	<b>Water Transportation (a board)</b>
April -	<b>Doors</b>
May -	<b>Cityscapes (a board)</b>
June -	<b>Brides</b>
July -	<b>National Parks (a board)</b>
August* -	<b>Picnics</b>
September -	<b>The Letter "M" (a board)</b>
October -	<b>Colored Leaves</b>
November -	<b>Turkey or Eagle</b>
December -	<b>Sledding or Sleighing</b>

\* If the members decide to have an August meeting.

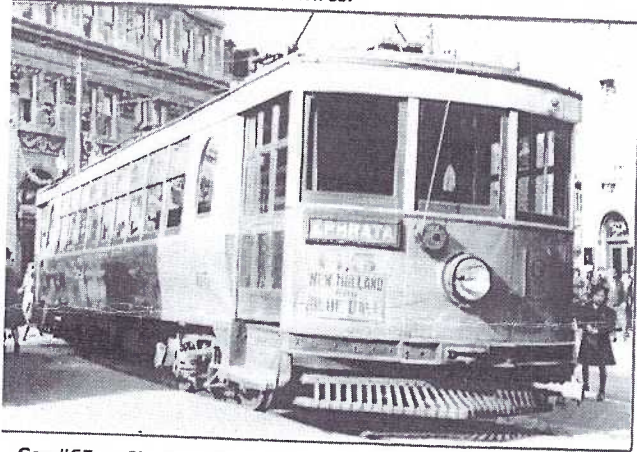




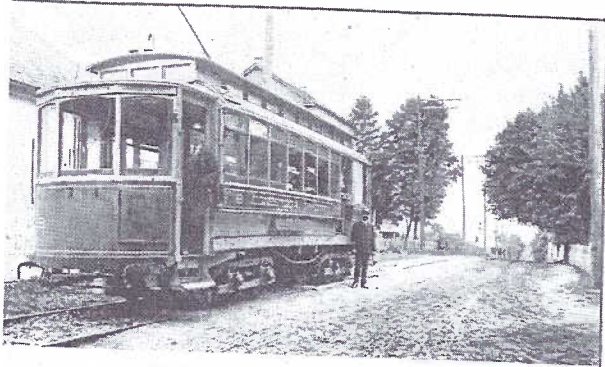
# CLANG! CLANG! CLANG!

## Went the trolley!

Featuring some postcards, photos, and memories of trolley cars in Lancaster County. Trolley service in the County was terminated entirely on Sept. 21, 1947 when the Seventh Ward and Rocky Springs lines were motorized following the summer season at the park. A few "fan" trips operated later as well as trolley work cars that carried crews removing track and overhead wires.



Car #65, a Cincinnati type, was built in 1924 and scrapped in 1947. It was being used on the Ephrata line that also served New Holland and Blue Ball. The undated photo shows it in Penn Square. We can see the Grist Building to the left and A. Schulte's Cigar and Confectionary Store on the right.

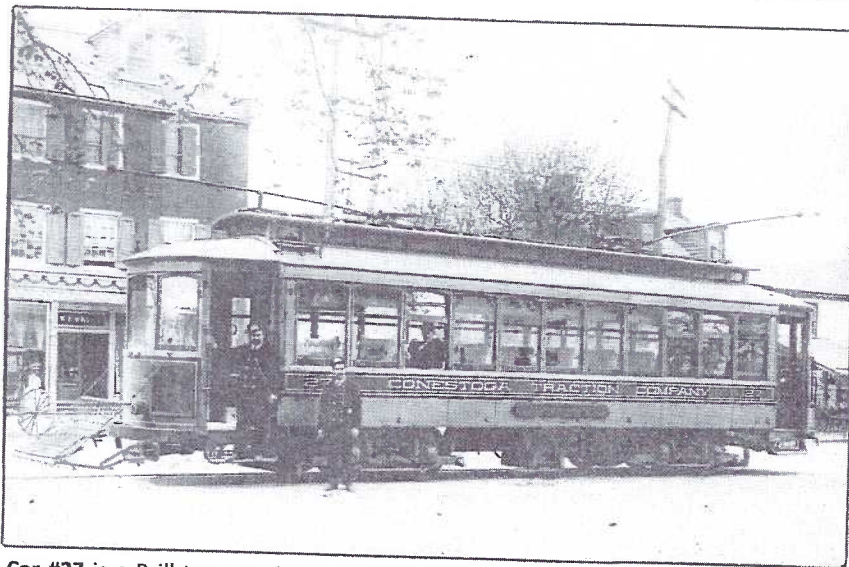


CAR ON LANCASTER AND QUARRYVILLE TROLLEY LINE  
ANDREW MOORE, MOTORMAN; JOHN McFALLS, CONDUCTOR

Car #8, a St. Louis type, was built in 1899. Both #8 and #9 were burned in 1910. The reason is not known. E. H. Stauffer published the b/w u/b view. Identified are conductor John McFalls and motorman Andrew Moore. In Sept. 1907 conductors and motormen got a raise: from 17¢ to 18¢ and from 15¢ to 16¢ an hour respectively.

Postcard messages give us a vivid picture of how trolley cars played a major role in the lives of local folks. 7/20/17 From Lanc. to Phila. "We walk(ed) about 10 miles and rode the rest of the way. Camped at Reading last night and here tonight. Am writing this on trolley car." 8/6/09 From Lanc. to Ephrata - "Dear Eva, Will try and be at Lancaster waiting room sometime around two o'clock. Hoping the day will be pleasant. Lovingly, your friend, Bertha."

1	2	3	4	5	6	7	8	9	10	11	12	13	14	15	16	17	18	19	20	21	22	23	24	25	26	27	28	29	30	31
Jan.	Feb.	Mar.	Apr.	May	June	July	Aug.	Sept.	Oct.	Nov.	Dec.																			
CONESTOGA TRACTION CO. Transfer																														
NOT TRANSFERABLE																														
This transfer is accepted for fare at Transfer Points only, on route other than shown by punch marks, on the first car after time cancelled. Subject to rules of the Company.																														
Rose Mt.	6th Ward	7th Ward	8th Ward	9th Ward	10th Ward	11th Ward	12th Ward	13th Ward	14th Ward	15th Ward	16th Ward	17th Ward	18th Ward	19th Ward	20th Ward	21st Ward	22nd Ward	23rd Ward	24th Ward	25th Ward	26th Ward	27th Ward	28th Ward	29th Ward	30th Ward	31st Ward	32nd Ward	33rd Ward	34th Ward	35th Ward



Car #27 is a Brill type semi-convertible, larger than those used on the Lancaster City lines. It was built in 1905 and scrapped in 1935, or 1936. The card was mailed from Lancaster to Marietta in 1910 though the photo was taken in Elizabethtown with the W. K. Winters General Store on the left. Besides the usual conductor/motorman images, we've a "bonus" of several passengers who patiently wait their trip. Note the rope cow catcher on the front.

RECEIPT FOR FARE PAID TO CONDUCTOR	
TO BE GIVEN TO PASSENGER	
Conestoga Traction Company	
1006622	
Form 3	
MOUNT	
FEB JAN	
APR MAR	
JUN JUL	
AUG SEP	
OCT NOV	
DEC	
1 DAY	
3	
5	
7	
9	
11	
13	
15	
17	
19	
21	
23	
25	
27	
29	
31	
30	
ELIZABETHTOWN	

10/15/09 From E. Petersburg to Miss Matilda Workman, S.N.S. (State Normal School) Millersville - "Come home tomorrow after dinner. Purchase return tickets. If you leave at 1 o'clock you will be home by 2. Be careful at Center Square. See that you wear your green dress & heavy blue coat."

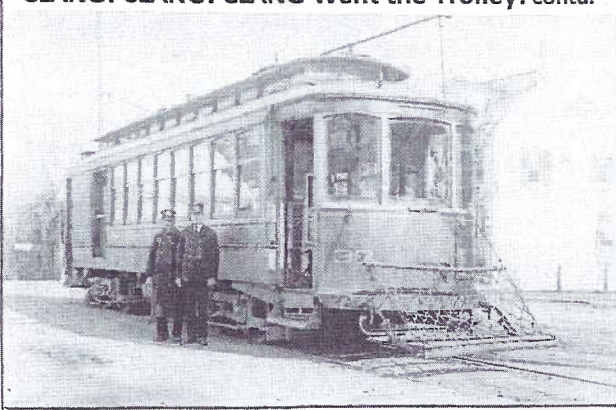
(No date) "Mother's, I have been at this place. (View of People's Bathing Resort). I went there on the trolley. Mrs. Overdeer went along then we went out to the Rocky Springs Park. I am going to Ann and stay all day. Mrs. said I could go sometime before long."

All paper transfers are reduced 40% from actual size.



10/17/12 From Lanc. to Miss Mary B. Hartman, Los Angeles - "Dear Mary, Am so glad to hear you like your new home. We are going to look for a letter from you real soon and tell us all about the diary. Don't forget the number of this house - 929. Hope you are all well. With best wishes and lot of love, Aunt Elizabeth." Car #212 is moving down N. Duke Street having just left the PRR station and crossed over E. Liberty Street.



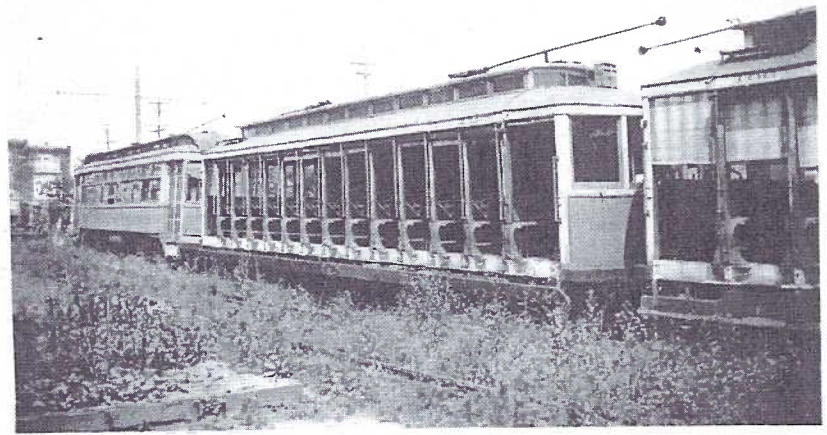


**Car #38** was built in 1906. It's a combination car meaning it carried passengers as well as freight — packages, newspapers, etc., and in Lancaster County this also meant milk from nearby farms. (Note the absence of windows at the back of the car.) Often the milk went to the chocolate factory in Hershey. It was rebuilt in 1921 but then retired in the 1930s. Evidence of a Chronicle Printing sign tells us the photo for this postcard was taken in Elizabethtown. The conductor and motorman are not identified.

5/17/14 From Lanc. to Bethlehem — "Arrived safely after a lengthy ride from R. (Reading) to L. (Lanc.) at 2:02. Mrs. M. met me at new station, took me (on) a great big trolley ride around city to home where we got at 2:56 and I (was) pretty tired & very hungry. Forgot my lunch you know. but went downtown last eve. to O. (organ) recital ½ hr. & to the stores; met Rev. S. on street. Going to hear Curtis, Burghalter & Seiple today. Be sure not to let N. cut any grass with chopper. Hope all is well till I come back. Mae."

10/31/10, From Lanc. to Mechanicsburg — "Dear Harriet, We are having a nice time. We took a trolley ride around the city. Aunt Lizzie."

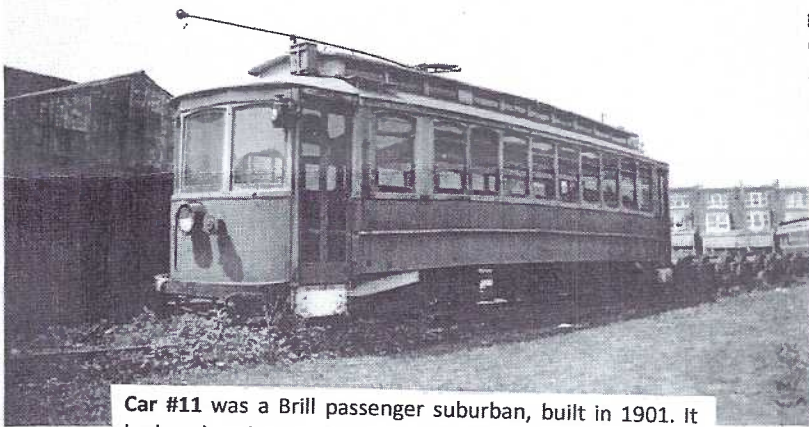
5/29/12 Within Lancaster City — "We will be going on the 10:45. Will meet you at the Penn depot, N. Queen & Chestnut Sts. Sadie."



**Car #183** (the car in the center of this line) was an 8-Bench Open Car made by Brill in 1909. It was retired in 1935 the year they stopped running to Maple Grove Park and Pool. The view is at the East End Car Barn north of Chestnut St.



**Car #159**, a Brill Open Air model, can be seen on the left of this Leighton & Valentine view of the trolley entrance to Rocky Springs Park. The undated message on the back, "I got on at Columbia 5:30, got in at Lancaster and got the 6:20 in city and caught the trolley at 8:20 in Norristown and that was luck. I changed at Lancaster on the Express." On busy Sundays in the summer, as many as sixteen cars were put on the Rocky Springs line to handle the crowds.



**Car #11** was a Brill passenger suburban, built in 1901. It had a heavier motor replacement in 1912 and steel sheathed sides added in 1921, making it a coach. This view is at the new CTC East End Car Barn built in 1910 and located between Chestnut and Walnut Sts, and Reservoir and Broad Sts. The 400' x 110' structure could house up to 80 double-truck trolley cars. An administration building had steam heat showers and 15 cots for operators whose shifts ended late at night or began in the early morning. Rows houses in the background are on Reservoir Street. The first CTC Car Barn was on N. Prince just north of W. James Street.

1/26/07 From Columbia to Lanc. — "Dear Marie, Jean and I will meet you at the Street Car Station at 12 K noon. Be sure and come. Minnie."

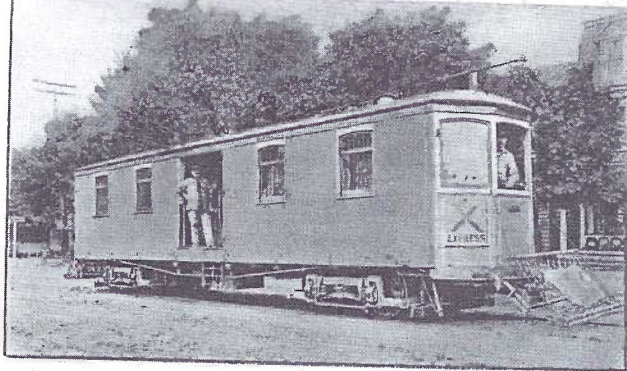
(No date) Lanc. to Lititz — "Dear Friend, A few lines stating that we will be out on the 3:45 car on Sunday afternoon and will get off the car at the waiting room. I have many things to tell you when I see you. From your friend, L.E.F."

9/20/07 From Ephrata to Landisville — "I think we will be able to get tickets. Please don't forget to be there. I will leave Ephrata at 12, reach Landisville at 1 o'clock. Your car will get in at a quarter after the hour. I will meet you. Lottie."

(No date) "You had asked us to come up. We will be up before long but not in the trolley. I most always get sick when I ride in them. We will be up in the automobile, but I will let you know later when. You folks come. I will be glad to see you all, but write and let us know when you are coming so as we are home, as we go away quite often since we have the auto. Write soon and come soon. Your Friend, Elizabeth Shreiner."



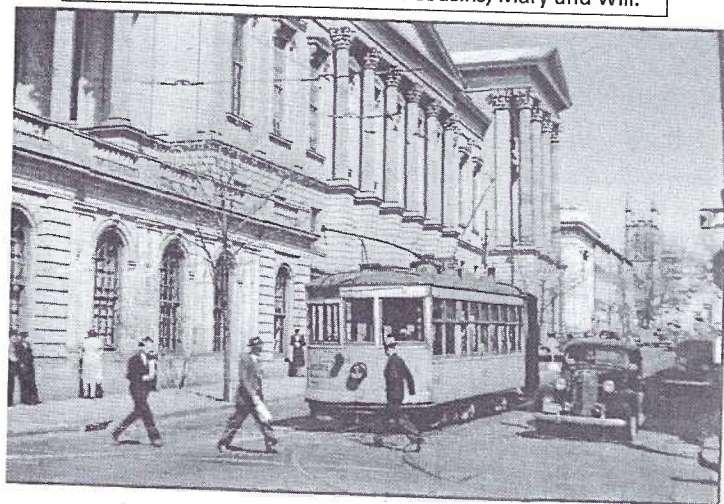
# CLANG! CLANG! CLANG Went the Trolley! contd.



Car #315, a Brill type, was built in 1906; retirement year is unknown. The PC was mailed Sept. 8, 1911 from Lanc. to Millersville. Express cars started out at an early hour. Farmers were milking cows at 4 a.m. and these big cars hauled it from farms to creameries in Lancaster. Von Nieda & Brun, Ephrata, published the colored card.

9/2/08 Within Strasburg – “Dear Lena, Arrived home OK. Maybe I am not stiff and tired today. I did enjoy myself so very much. I can never thank you all enough. Hope you will come to Lanc. soon to see me. Mrs. T. and I got a seat coming home but poor Mr. T. had to stand. I suppose you got home OK. Love to all, Nelle.”

10/21/07 Lanc. to Mountville – “Dear Cousin, We caught our car and arrived home safely at 7:30. That walk from your place to the car was certainly nice although Mary was scared by a few cows in the fields. We both enjoyed ourselves immensely and extend most hearty thanks hoping that you folks will soon visit. Your cousins, Mary and Will.



Car #221 is a Brill type, built in 1922 and of the size most of us who grew up in Lancaster City will remember. They weren't nearly the super-size of cars on the County runs because City cars ran more often and had more traffic to contend with (or vice versa). The car was rebuilt along with many other city cars between 1936 and 1945 with wider corner posts for safety reasons and strength. #221 is shown in the 1940s view on N. Duke St. approaching King Street. If it is the Duke Street trolley, it will make a right turn, passed the Court House to Penn Square, then north on Queen to the PRR Station, and then south on Duke Street, completing its “loop.” The car was scrapped in 1946 with most city trolleys. On Oct. 5, 1920 the “two-man” car era had closed. These new Birney Safety Cars had a dead-man's control and the motorman was no longer needed. If the conductor took his hand from the controller, the car stopped running. The last CTC trolley to run was to Rocky Springs in 1947. Audio Visual Designs is publisher.

4/21/09 From Salunga to Elizabethtown – “Dear Sister-in-law, Your letter to hand this morning found us all well. Am very glad to hear of you're coming down. We will look for you if weather permits on Sun. Get off the car at Salunga Power Plant. Be sure to come even if you don't get a new hat. Annie Heiser.”

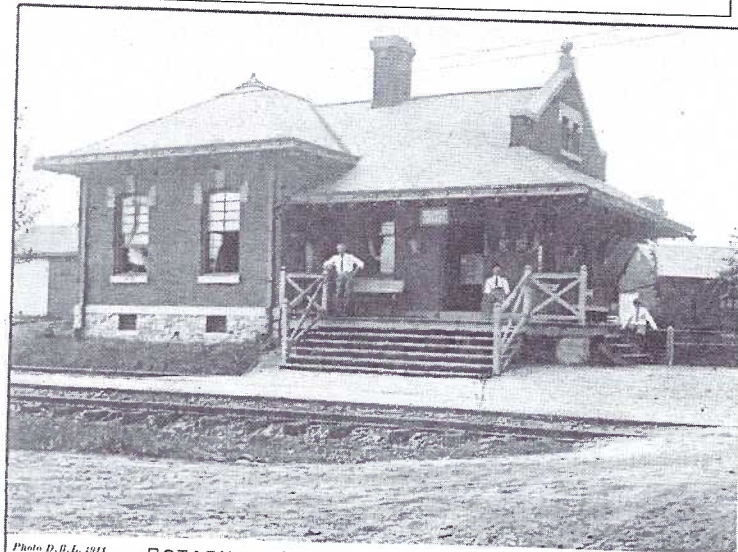
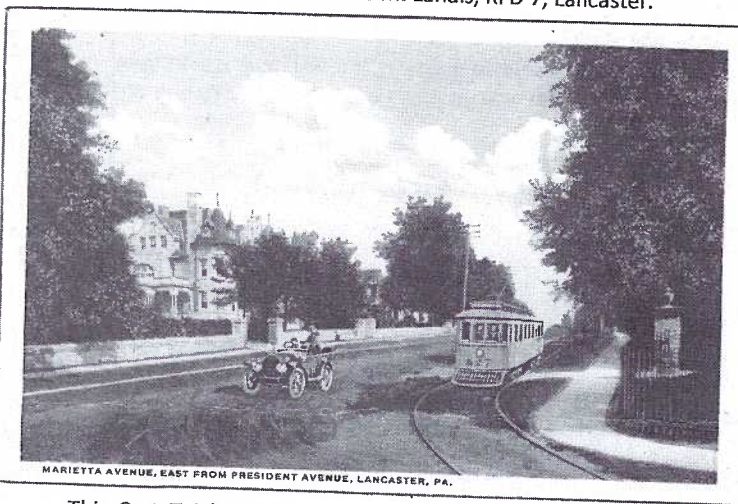


Photo D.B.L. 1911

ROTARY AND TROLLEY STATION, SALUNGA, PA.

This 1911 view is from a photo by David Bachman Landis. He also printed the card at his Landis Art Press, on E. Chestnut St. in Lancaster. The building's rotary generated the extra electric power needed to move the trolley cars on to Elizabethtown and back to Lancaster. Today the building, at Brandt Blvd. and Oak Lane, is owned by the Lancaster Mennonite Conference and serves as a library. Postal card mailed to Amos M. Landis, RFD 7, Lancaster.



MARIETTA AVENUE, EAST FROM PRESIDENT AVENUE, LANCASTER, PA.

This Curt Teich view (A44629) occurs as a white border and earlier view w/o border. The scene location is correct. The mansion on the left still stands. The sidewalk and iron fence on the right are gone. What are very wrong are the auto and the number of the trolley car - #527. CTC trolley cars were numbered from #1 to #241. Work, repair, snow cars were #301 to #335, #401 to 404, and #501. The auto on this PC was added to the view. Raphael Tuck was also notorious for “touching up” postcard views.

Conestoga Transportation Co.		JUNE 13		PEARL ELIM		MAR		FACE		COLL		LINO		DUKE		ROSS		W		GRVW		HOME		McCAS		E. BELT		PARKS		DAUP		7th W		S. QU		LAUR		8th W		Q		R. S.	
004807		1 15 30 45		2 15 30 45		3 15 30 45		4 15 30 45		5 15 30 45		6 15 30 45		7 15 30 45		8 15 30 45		9 15 30 45		10 15 30 45		11 15 30 45		12 15 30 45		C E T M		L E N H		P S Q		M V		E m		R. S.		A. M. P. M.					

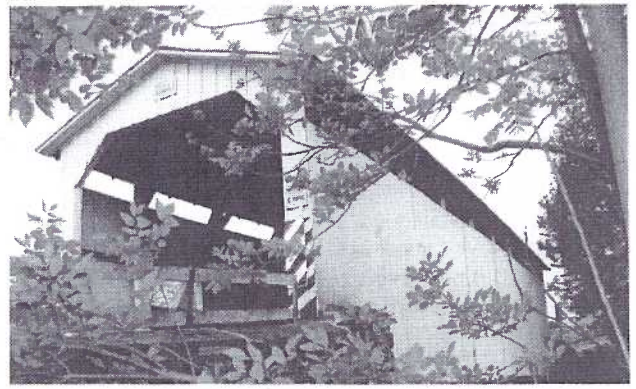


# Local Bridge Relocated

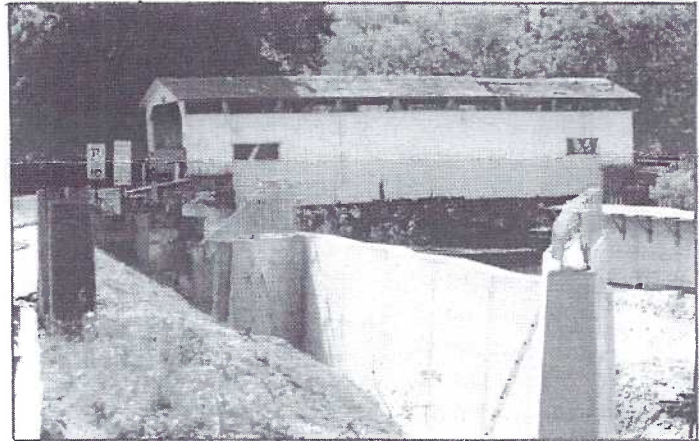
## First-of-its-kind agreement in PA.

In mid-December Lancaster County's remaining all-white covered bridge was opened at a new location. Known as Keller's\* Covered Bridge, Rettew Mill Covered Bridge, and Guy Bard's Covered Bridge, the span, built in 1873, was in reasonably good condition but the neighborhood was fast becoming dense, the traffic increasing rapidly and both approaches to the bridge had always been too acute, offering poor visibility. So in 2006 it was dismantled and the huge timbers put in storage. Lancaster County's unique covered bridge crew has been abolished as a cost cutting measure so in 2010 Lycoming Supply Inc. of Williamsport was picked as the general contractor for rebuilding the bridge approximately one mile downstream. It replaced an aging metal truss bridge that had been closed since 1990. When we visited it soon after it opened, we had to pull off the road four times in ten minutes to allow traffic to pass. It's certainly a welcomed addition on Middle Creek Road near the old Akron Road north of Rothsville.

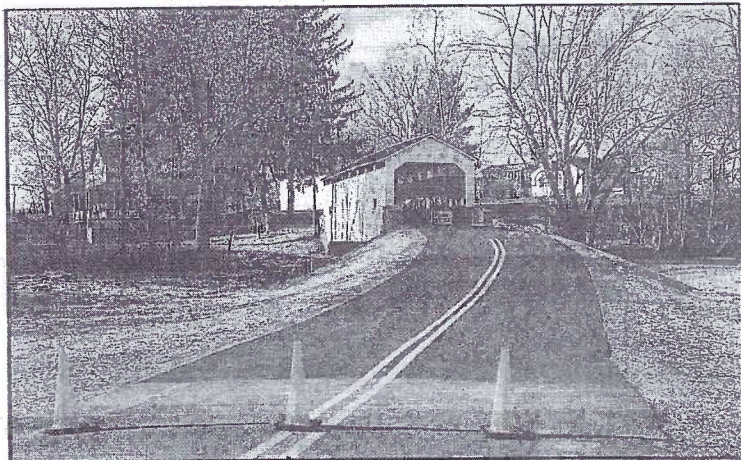
\*It's not uncommon for local bridges to have several names – roads, mill owners of different generations, etc. For this reason covered bridges, world-wide, are given numerical designations. The National Society for the Preservation of Covered Bridges, Inc. published its first *Guide to Covered Bridges of the U.S.* in 1956. Over the years the guides have honed their data and alphabetically PA is the 38<sup>th</sup> state; Lancaster the 36<sup>th</sup> county. Bridges are numbered by locations on creeks in the county. Keller's CB is known among "bridgers" as #38-36-13. The first number is for PA, the second for Lancaster County, and the last for that particular span.



This view, #14, is in LCPC member Bob Shirk's set of CB views. He photographed the bridge on May 20, 2002.



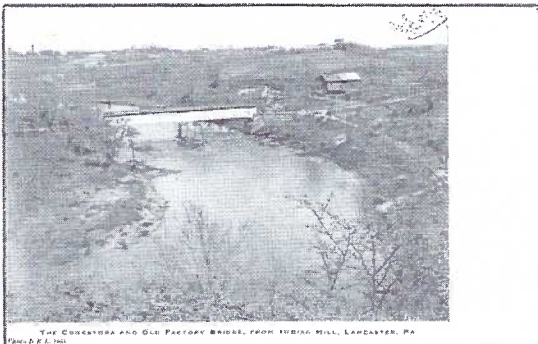
In 2010 Bob Shirk issued another set of local CB postcards. This is #4-11, a photo he made in 2006 that shows the start of construction of a concrete bridge to would eventually replace Keller's CB seen in the background.



A photo from the Lancaster Intelligencer Journal-New Era showing Keller's Bridge before it opened at its new location.



Mel Horst's 1967 PC is titled "Wintertime at Shand's." The bridge, known today as the Pinetown Covered Bridge, and is red like 28 of the County's 29 covered bridges. It's just off Rte. #272 near Oregon Dairy. **Far left** – a D. B. Landis PC of the Old Factory Bridge from Indian Hill. The longest (210') white CB in the county, it was at the end of S. Duke St., Lancaster; demolished in 1948.



The Covered Bridge and Old Factory Bridge, from Indian Hill, Lancaster, PA. (Photo by D. B. Landis, 1967)

**JUST DISCOVERED!** When he heard there would be a short story on Keller's CB, Harold Moyer resurrected a pack of PCs he had bought some time ago. **One is included with each copy of *The Card*.** It's *Covered Bridge Inn*, 990 Rettew Mill Rd.; no longer a Bed & Breakfast, the obvious intent for which the card was published. To the left can be seen the Keller's/Rettew Mill Bridge along with the old mill, both since removed. Date of the card is unknown.

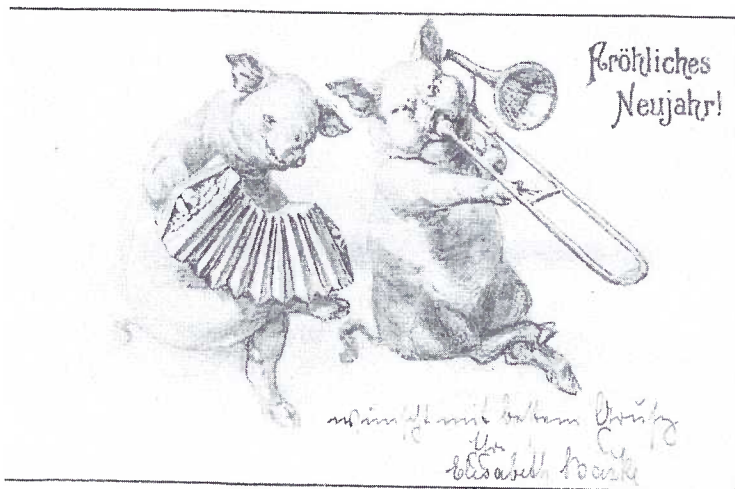


## New Year's Porkers

German families in Lancaster County have been feasting on pork and sauerkraut since they got off the boats generations ago. Postcards are reminders that pigs were a sign of good luck back then. Eating a pig, or part of it, on New Year's Day guaranteed you good luck for the rest of the year. Our New Year's Day porkers suggest the tradition was more wide-spread than just Germany.



**Prosit Neujahr (Happy New Year)** may be this hunter's greeting, but he'd best hope his good luck will land him softly in the snow and the wild pig moves on through the forest. Berlin artist for the undivided back postcard is Otto Andres.

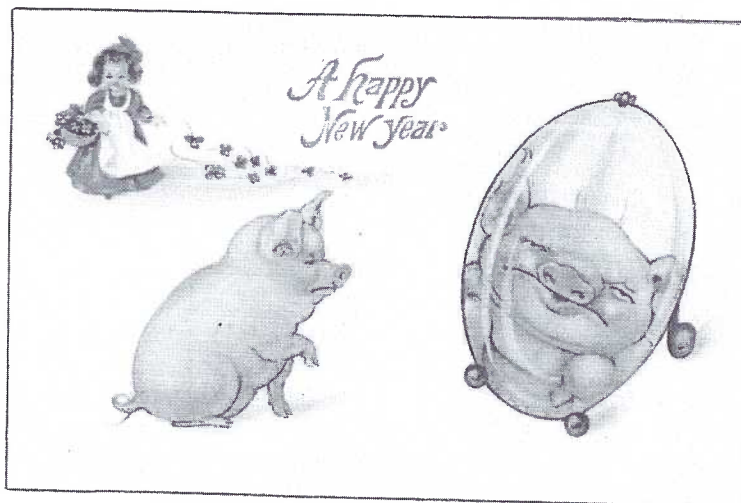


**Fröhliches Neujahr! (Happy New Year!)** is the greeting more often seen on German postcards. This u/b card was mailed Dec. 31, 1903. The image would have tickled LCPC's second president, Earl Carver. Earl played the trombone and collected PCs with trombones, churches and lambs.

**Gelukkig Nieuwjaar (Happy New Year)** was mailed in January 1927 to a Rotterdam family and, you guessed it, the greeting is in Dutch. It's by German artist and illustrator, Martin Growald. This scene is a perfect example of the saying "as independent as a hog on ice" (acting confident or cocky). We wish our duo well.



These youngsters deliver their greeting, **Godt nytt år**, Norwegian for **Happy New Year**. The card, however, was printed in Gothenburg, Sweden. It bears a Swedish stamp and is postmarked Jan. 1, 1905. Our good luck porker is assisted by a friend in pulling the mail cart over the snow.



And finally, **A Happy New Year** in English. The porker isn't at all pleased with his reflection in the convex mirror. A little girl scatters additional good luck in the form of 4-leaf clovers.