

# THE CARD – Vol. 22, No. 6, Issue 248, June 2011

A Publication of the Lancaster County Postcard Club, Lancaster, PA

*Enjoying postcards through education and entertainment.*

Next Meeting: June 20, 2011. Farm & Home Center. Buy, Sell and Trade from 4:30. Meeting - 7 PM.

Yearly membership is \$10 (\$5 for each additional member at the same address.)

Membership chairman: Richard Pendergrast, 950 Willow Valley Lakes Dr., I-506, Willow Street, PA 17584.

Club website: [www.playle.com/clubs/lancaster](http://www.playle.com/clubs/lancaster) or Google search: Lancaster County Postcard Club.

**UNDER COST** – You can buy our Vol. II book of local postcard views for just \$15. Give one to a friend.

## MAY MEETING

Once again we were hit with predicted rainy weather and as a result only 29 members were present. It seem 2011's Rainy March became Rainy April which has become a Rainy May. Even so, there were seven tables set up and selling - Kelly Fasnacht, Jim Ward, Bob Kramer, Ray Dennis, the Hecklers, the Moyers and Bill Buckwalter. The door prizes were a \$3 club certificate to Helen Fry and one for \$2 to Bob Shank. These are redeemable any member's table. Marie Schurz won \$8.50 in the 50/50.

Jere Greider, LCPC's Expo Chairman, has had several members sign up to help sell tickets and greet visitors in the lobby. He still needs more help. If you can offer just 2 or 3 hours, please call him at 717-285-5872. Thank you.

Subjects for exhibit boards for **2011 Expo** are as follows – **Children, Holidays, Transportation and Vacation Spots.** You may enter any one or all categories with a board (maximum of two boards per category). Please give this some thought. Cash prizes are awarded. An entry form will be included in a future issue of *The Card*. Walter and Barb Mowrer are in charge of the exhibits this year.

At the June meeting we will vote on the amendment to our By-laws as listed in the May CARD. We will also discuss and vote on whether to continue meeting in the same long room as we have for many years, or meet in the smaller room off the lobby as we did earlier this year. The rent is the same for each room.

Doug Milliken's program on **Santa Catalina Island** was well received. He even provided some music. Thank you, Betty Beck from operating the Elmo projector.

## May Exhibit Competition

Six entries for the subject **CITYSCAPES** necessitated erecting the large easel. Thanks go to those who helped put it together and dissemble it.

**FIRST** James Tanis Sightseers Take in the Cityscapes

**SECOND** Tom Beck Lancaster's Penn Square of Yesteryear

**THIRD** Harold Moyer York, PA

**HONORABLE MENTION** Gisela Withers Prague

Other entries were from –

Ruth Moyer Reading, PA

Jim Ward Panoramas around the World

Thanks to all who participated. Next month's subject will be a single card and the subject is **BRIDES** – not too easily found on postcards, so start looking early! For the future, here are subjects for the remainder of 2011 –

July - National Parks (a board)

August - **no meeting**

Sept. - The letter "M" (a board)

Oct. - Colored Leaves (a single card)

Nov. - Turkey or Eagle (a single card)

Dec. - Sledding or Sleighing (a single card)

## Future Local Postcard Shows

**Titusville, NJ, June 4.** Washington Crossing CC Club (WC4) at Union Fire Hall, 9 to 5. (Just across the Delaware River.)

**York, PA, June 11.** The York Post Card Club's show at a new, convenient location – Holiday Inn, 2000 Loucks Rd., just off Rte. #30 By-pass; from 8:30 AM to 4 PM. Admission \$1.50 with ad. Many LCPC members set up at this show.

## June Program

Bud Heim takes the helm for a second program this year and has chosen **Rare Local History Postcards**. A native of Columbia, Bud's bound to have a trunkful of his hometown views as well as some along the Susquehanna River. To give you an appetizer, we've included three postal cards here and several postcard views on page six of *The Card*.

ANNOUNCING THE FIRST

# LEAP YEAR DANCE

OF THE SEASON

KEYSTONE HALL, COLUMBIA, PA.

Tuesday Night, January 22nd, 1924

MUSIC BY

DANCELAND SEVEN ORCHESTRA

COME YE! TO THE FOURTEENTH Annual Christmas Dance OF THE COLONIAL CLUB of COLUMBIA, PA. TO BE HELD IN KEYSTONE HALL Wednesday Night, December 27 MUSIC BY DIXIE-LAND SEXTETTE Dancing from 8:30 until 11:30

COMMITTEE - Walter Eberlein, Jacob Smoker, Leo Desch, Ortlip Walker, Wm. Martin

# CRAB FEAST

FIRST OF THE SEASON



# FREE

# FREE

## "STAG NIGHT"

Friday Evening, May 19th, 1933

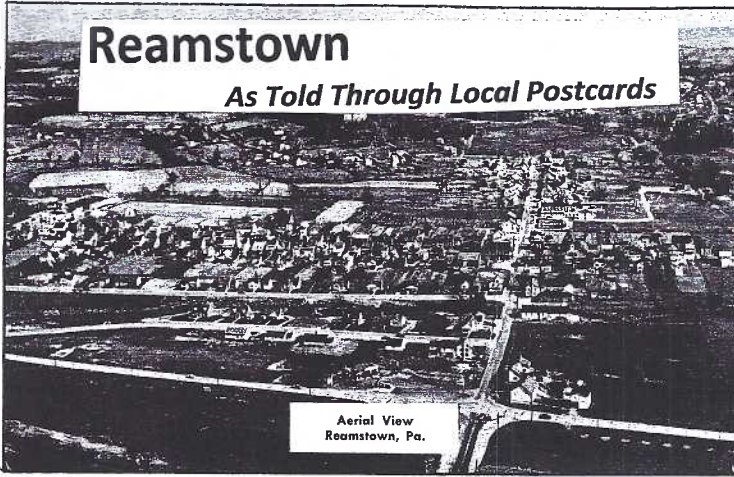
Columbia Lodge, No. 1074, B. P. O. E., Columbia, Pa.

Don't Forget the Saturday Night Dance.



# Reamstown

*As Told Through Local Postcards*



Aerial View  
Reamstown, Pa.

This **Aerial View of Reamstown, Pa.** is a b/w view by Nyce Mfg. Co. of Vernfield, PA. It looks towards the town as most of us are accustomed to enter it, from Route #272, seen along the lower foreground of the card. "Founded in 1760 by Tobias Ream. His father, Eberhard Ream came here in 1723 or 4 and was the first White Man in this area." So reads the rev. of the card. The Reams' initial 389 acres (increased eventually to 700) near the Cocalico Creek were divided and Tobias took his share of 54 acres and laid it out into building lots. The town was Zoar until about 1772 when the town took on the family name.



SALEM'S LUTHERAN AND REFORMED CHURCH, REAMSTOWN, PA.



Greetings from Reformed Sunday School which  
the bearer attended, Sept. 22, 1912.  
School meets in this church every Sunday.  
We invite you to come.

SALEM'S LUTHERAN AND REFORMED CHURCH, REAMSTOWN, PA.

The first three lots of what is now East Church Street were designated by Tobias for a church and burial ground. **Salem's Lutheran and Reformed Church** was built in 1817 as shown on the top d/b view by A. M. Deichler, Lancaster. Another Lanc. publisher, Conestoga Pub. Co. Print, issued the lower view showing the 2-story addition with bell tower which was added to the old edifice in 1907.



MAIN STREET, REAMSTOWN, PA.

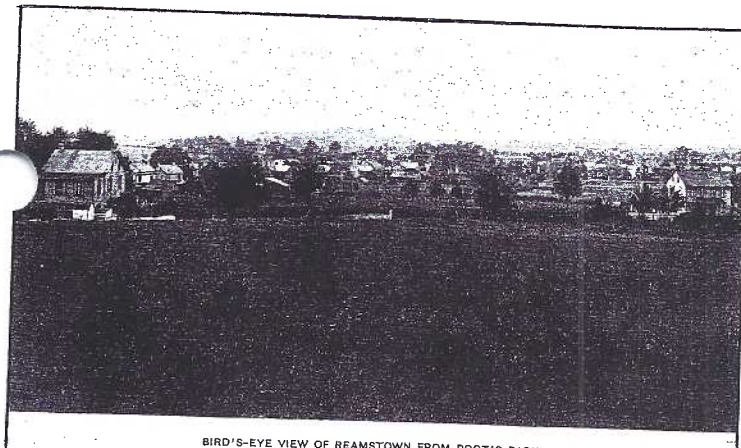
The trolley ran from Lancaster to Ephrata and then Reamstown and on to Adamstown where it met the Berks County line. On this L. B. Herr u/b, b/w view we see the trolley approaching the center of town going north on **Main Street** (now South Reamstown Road.) The old Cross Keys Hotel, later Slater's Restaurant, is seen on the right. A small sign project from the sidewalk roof reading "Cars Stop Here." It referred to the trolley cars.



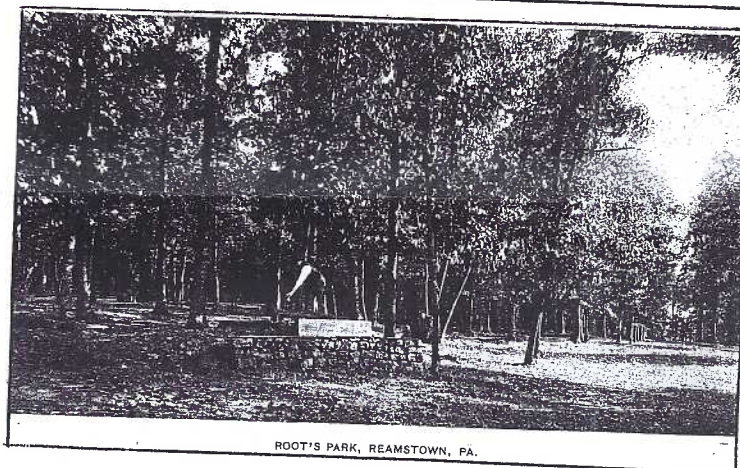
HOTEL REAMSTOWN, W. H. HARNER, PROP'R., REAMSTOWN, PA.

On the trolley card (described above)) you can see, barely visible behind the trees on the left, the **Hotel Reamstown, W. H. Harner, Prop'r.** It's shown on this u/b card by an unidentified publisher. Tobias Ream allotted this valuable central property to his niece and charged her four pence a year rent. All of the other town's property renters paid ten shillings a year rent. This view shows the hotel after it was rebuilt following a 1905 fire.



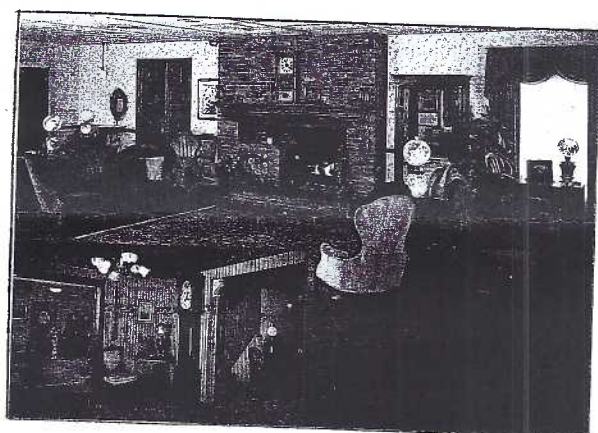


BIRD'S-EYE VIEW OF REAMSTOWN FROM ROOT'S PARK.

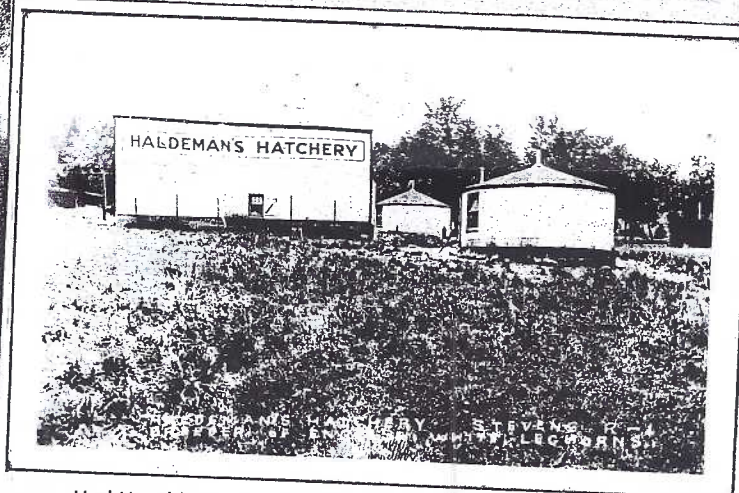


ROOT'S PARK, REAMSTOWN, PA.

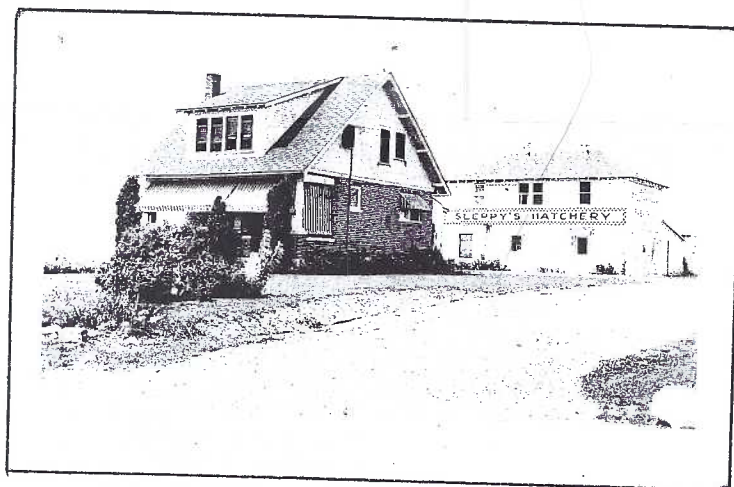
Farther east on Church St., and left onto Park St., is a neighborhood that has long since lost its resemblance to a park. Wind your way to the top of the hill, past the former Parkside Manor Rest Home, and you can easily see how the **Bird's-Eye View of Reamstown from Root's Park** became the top u/b view by L.B. Herr. The **Root's Park** card, below, shows a long gone stone-walled spring.



The **Good Funeral Home** is at 34-38 North Reamstown Rd. Two interior views are shown on this modern 4"x6" PC. The business began in 1846.

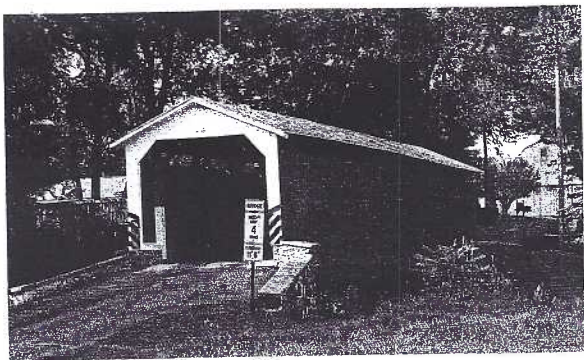


Had Harold Moyer not been along on this post carding adventure, your editor would not have included the three views in this column in a Reamstown story. The two top RP views show **Haldeman's Hatchery, Breeder of English White Leghorns, Stevens R1**. The house is now #165 E. Church Street. Stevens is one of those post office enigmas. Its delivery routes encompass more than 15 miles - from Reamstown on the east to Middle Creek and Hopeland on the west.



Looking suspiciously like the same photographer's work is this RP view of the **Sleppy R. O. P. Farm, Ephrata, Pa.** on Route 222. The Sleppy Hatchery (name on building) is on the South Reamstown Rd. (old #222) at Pinewood Ave., the entrance to a new development. Another sign on the Bldg. reads "Sleppy Farm - Baby Chicks." This is Harold Moyer's postcard.





Nearby is **Bucher's Mill Covered Bridge** on Cocalico Rd. as seen on the 2002 view by LCPC member Bob Shirk. The bridge is easily reached from #272. The mill is gone. If you've failed to see Bob's latest groupings of colored and b/w CB postcards, contact him in Leola at 717-656-2781 or at our club meetings.

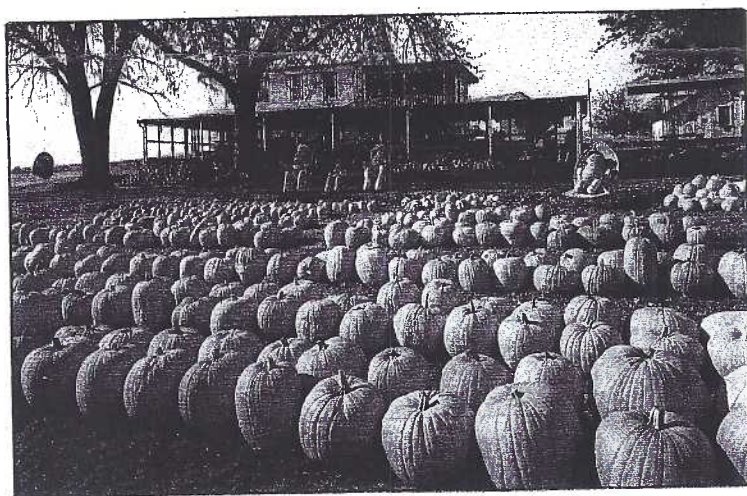
## TERBY-TOWN

US 222 on PFAUTZ HILL ROAD

EPHRATA, PENNA.



Continue west on Pfautz Hill Road to another Reamstown entrepreneur. This colorful **Terrytown** card, Harold points out, shows the display of basement business at 321 Pfautz Hill Rd. Harold says the home business was there for just a few years in the late 1950s or early 1960s.



Not far from Bucher's CB at the corner of Pfautz Rd. and Rte. #222 for many years we've enjoyed the huge pumpkin display at the Leroy Pfautz Farm Market near Reamstown. The early 1960s card by Mel Horst reminds buyers that the family "produces fresh fruit and vegetables by organic (non-chemical) methods."

# Dutchman's Diner

1/4 MI. NO. OF **Reamstown, PA.** ON RT. 272  
1 MI. SO. OF PA. TURNPIKE EXIT 21  
215-267-2268

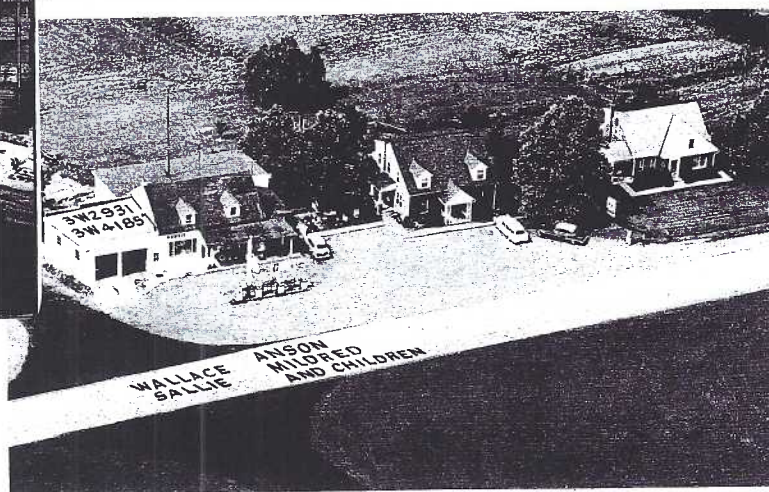
"Welcome to Pa. Dutchland"

**Family style (all you can eat) every Sunday**  
(IN OUR BANQUET ROOM)  
HOME STYLE COOKIN' AT HOME STYLE PRICES  
"GUT GLICK HITE"  
BEAT THE ENERGY CRISIS  
WALK IN FROM US  
...FITS FROM LITTLE ON UP... LIKEWISE OUR FOOD  
"Them that works hard eats hearty"  
OPEN 24 HOURS DAILY

Sign up for Good Eatin'

COMPLETE CATERING AND BANQUET SERVICE

Before it was KYMA Seafood Grill, it was a steakhouse and before that – for many years – it was Silk City Diner, and before that it was the **Dutchman's Diner**, on the southwest corner of #272 and Kurtz Road. The Dutchman sold more than food. Lower Center – "Beat the Energy Crisis – Walk in **Knapp Shoes** from Us...Fits from Little on Up – Likewise Our Food." F. A. Woerner, Inc. published the PC.



Across Kurtz Rd. on the northwest corner and still standing with little structural change but not open, is the original **Epting Store** (1930s), with a **Gas Station** added later, and still later a **TV repair shop**. Epting was a ham radio enthusiast; his call numbers are on the garage roof. Two homes on the right are still there on this RP view of Harold's.



## Red Run Grist Mill Set

First of all, these grist mill PCs have a New Holland address, but because the **Red Run Grist Mill, the Covered Bridge and the Campground** are all on the same site, and not far from Reamstown, we're including this 6-card set and information we'd like to share, with this issue of *The Card*. The six cards were photographed and published by James (Jim) Hess, a local man well known to LCPC members. The set was printed by Dexter Press, Inc., West Nyack, NY. They are captioned -

- 76942-B Swimming Lake & Beach (now campgrounds)
- 76943-B Grist Mill Interior (showing millstone)
- 76944-B Old Grist Mill (exterior with house left rear)
- 76945-B Water-Wheel & Gears (interior)
- 76946-B Grist Mill & Carriage Shop (exterior)
- 76947-B Red Run Covered Bridge (with J. Hess' Cadillac)

### Info from Brian Frankhouser

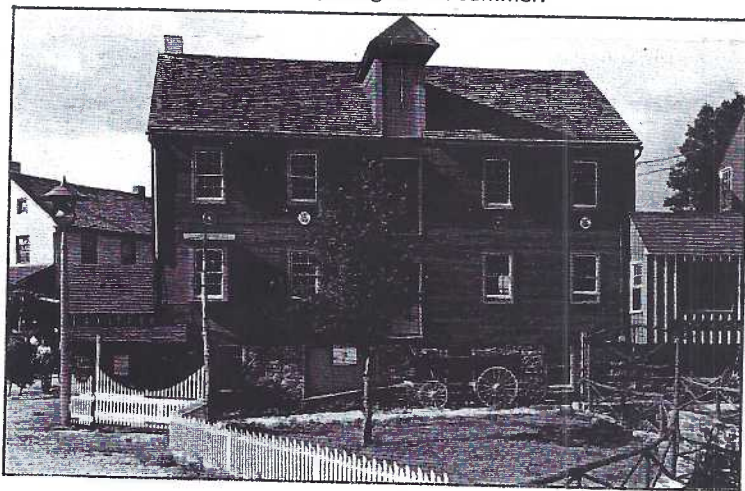
On Sept. 5, 1998, LCPC member Brian Frankhouser sent your editor a copy of #76945-B with this message; "JW, A large hoard of this series was sold at public auction today...76942B to 76946B (5 different "Red Run Grist Mill" postcards). However, there weren't any 76947B (this is the last card in the series which shows the covered bridge).BF"

### Up-dated Information

In a May 2011 conversation, Brian added "it was a Zimmerman public sale on the premises" He remembers the hoard of cards was sold in lots of 50 cards for \$6 - about 12¢ each - not an unusual price when an over-stock comes to light. The absence of the covered bridge PC is a bit unusual. It may have been separated from the mill/campground cards years before, a non-postcard collector ignorant of the numbering sequence. *If any member can shed more light on this set, let's hear from you.*

### The Future of the Site

Harold Moyer and I talked with the gentleman who lives in the house behind the mill. He has just sold the mill to one person, the covered bridge to another. The fate of the CB is in doubt. For years it was kept closed to the public. In disrepair, he couldn't allow public access because of huge liability. He could only say the new owner is in the demolition and restoration business. That's a 2-way street. The grist mill was once open for tours but that was ages ago. The Red Run Campground, a third owner, is definitely still in business and will be open again this summer.



#76944-B The home, left rear, has been stripped of the stucco façade and shows the beauty of the original 1850s sandstone.

*Too few of us read the messages on our postcards. Fact is, the images conjured up by these messages are often far more colorful than the pictures on the other side. Many messages show us the social life of 100 years ago.*

## Local Messages

### Homespun Lancaster on Early Postcards

3/3/1931 to Elmer Becker in Washington Boro.

A few lines. Uncle Henry Baker's sale is March 14 Sat. We were over at Uncle Sam's the other Sun. He was kicked by a mule. He could not work. He was kicked on the breast and he got short of breath when he walks a little fast. He dare not run his machine. Sadie Resch.

2/23/1911 to Miss Mary Bunheimer, RFD #3, Lancaster.

Dear Mary, Can you sew for Bertha the last week in March or the first week in April? Please let me know. Mrs. Reuben Hollinger, Lititz RFD #3.

7/29/1920 to Miss B. Koontz, Lutzville, PA (from Lanc.)

Dear Aunt Just got through eating supper - best we have had for a long time. We don't often get meat. One piece like you sent costs from 25¢ to 35¢ here. Rec'd. letter & money too. The sweet peas are lovely, were withered but freshened in water. I had a letter from Uncle John yesterday and he sent me \$10 so I will have some money now. Just had about a dollar when I got his. Reese.

9/1/1908 to Mrs. A. J. Railing, Shoff's, Lanc. RFD #1.

Dear Cousin Bill, Why don't you let a person hear from you or get to see you? Come over Sunday if you don't go to church. Come and help to play croquet. I got a set and Mr. Eberle fixed me up a place in the orchard to play. It is OK. Last Sunday we went down on that Rawlinsville (trolley) car getting to R. at 9:30... Be sure to come. Ida.

10/3/1918 to Mrs. Annie R. Bosworth, Terre Hill.

Dear Aunt Anne, This is certainly a bad week for the fair. Yesterday the crowd was estimated at 50,000 but the rain in the afternoon was a great disappointment. I am going out on Saturday afternoon if weather is favorable. Sam.

1/6/1909 to Mr. W.F. Keener, Highville from Mountville.

Dear Brother, The weather was too bad to come down today but hope you are still getting better. Let me know Did you get oysters? If not, why let me know and I will send you some on Sat. with the market folks. Now don't forget to let me know how you are and if Sister Carrie is still with you. Mona and Irene are in bed already. Mona is not so well. From you Sister Christie.

9/22/1908 to Miss Susan Leaman, Lancaster, RFD #6.

Dear Friend, Reached home safe on Saturday night but without my gloves. I put my things in the corner of the room behind a chair. I thought maybe if you seen them you might bring them along to Lydia's singing. I think I will get there as far as I know now. Yours, Amanda B. Herr.



## Hard-to-Find Columbia PCs

*With reference to Bud's June program.*

Left column —

**The Triumph Embroidery Co.** was at Manor and 12<sup>th</sup> St., as were Triumph Shirt Co. and Triumph Steam Laundry. Frank Given was Pres. and Treasurer at TEC in 1898.

The **soda fountain at Zeamer's** on Locust St. near Strickler Hdwe. was as popular as the postcards Zeamer published.

**Harvey D. Abel & Son** delivered ice. The 1909 directory lists him at 256 S. 8<sup>th</sup> Street, Columbia.

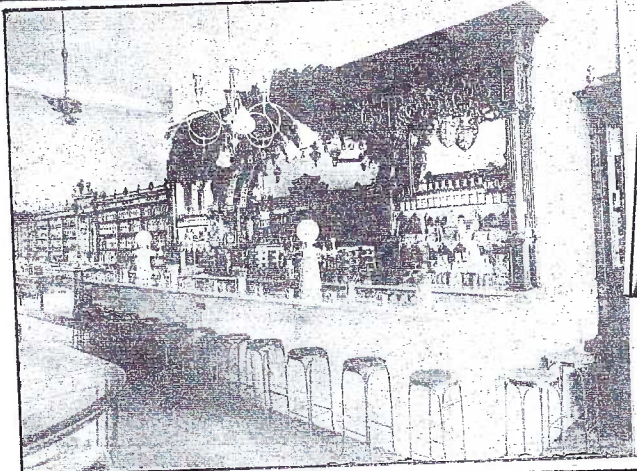
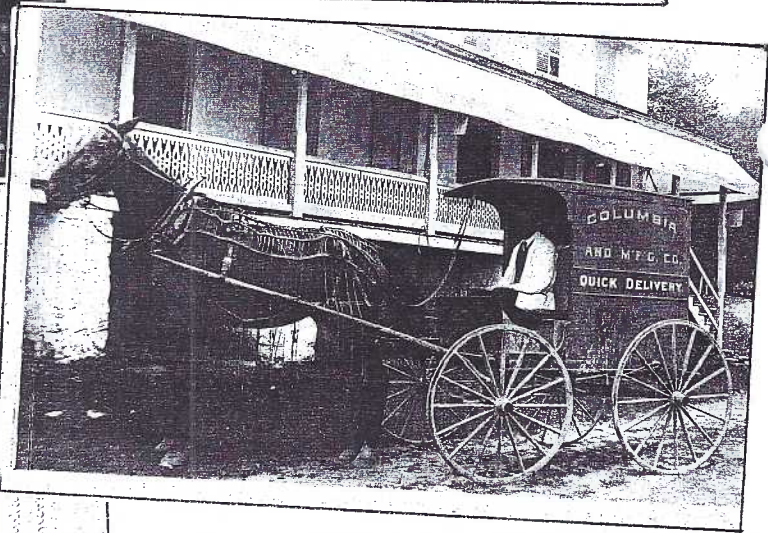
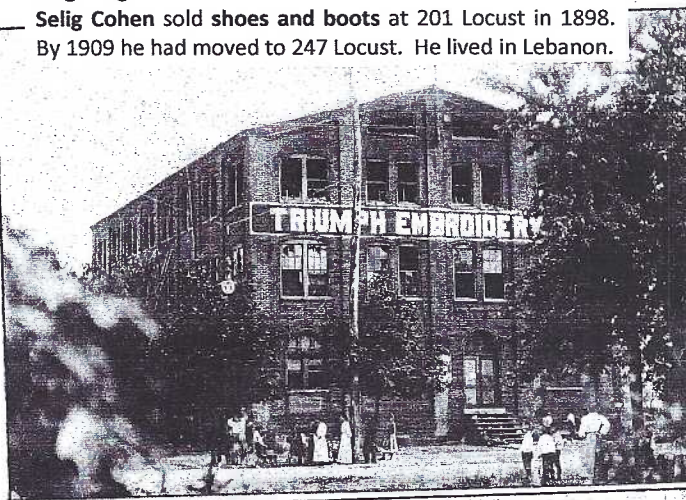
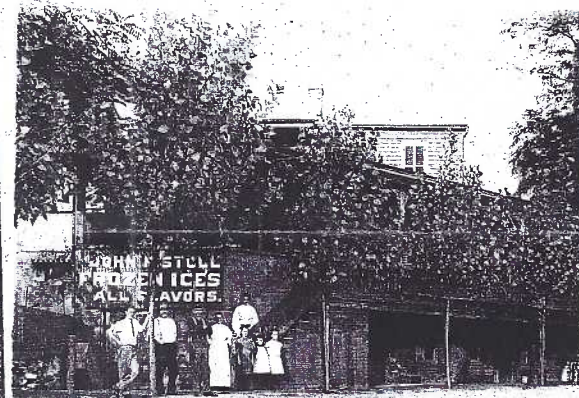
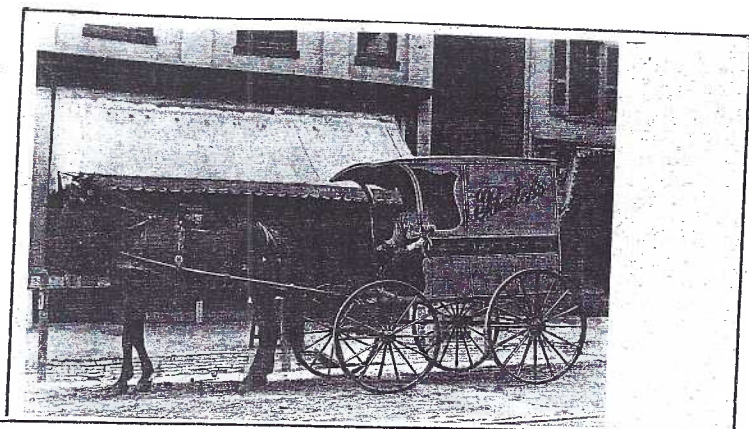
Right column —


**Amos Barch** sold and delivered groceries from his store at 417 Locust Street.

**John F. Stoll's Frozen Ices** are featured in this view. He also sold ice cream and milk at Cherry and Lancaster Ave.


**John R. Bucher** is seen here in his **Columbia Baking and Mfg. wagon**. The business was at 169-173 Locust St.





**Selig Cohen** sold shoes and boots at 201 Locust in 1898. By 1909 he had moved to 247 Locust. He lived in Lebanon.





**Burt & Packard "Korrek Shape" shoes** possess individuality of style and character, fit with ease and grace, and give abundance of service. Our famous shiny leather "*Burrojaps*" is unbreakable hence *Guaranteed*.



**S. COHEN & CO.**

Columbia, Pa.