

# THE CARD – Vol. 22, No. 9, Issue 251, September 2011

A Publication of the Lancaster County Postcard Club, Lancaster, PA

*Enjoying postcards through education and entertainment.*

Next Meeting – Sept. 19, 2011. Farm & Home Center. Buy, Sell and Trade from 4:30. Meeting – 7 PM.

Yearly membership is \$10 (\$5 for each additional member at the same address.)

Membership chairman: Richard Pendergrast, 950 Willow Valley Lakes Dr., I-506, Willow Street, PA 17584.

Club website: [www.playle.com/clubs/lancaster](http://www.playle.com/clubs/lancaster) or Google search: Lancaster County Postcard Club.

**UNDER COST – You can buy our Vol. II book of local postcard views for just \$15. Give one to a friend.**

## 2011 Annual Club Expo

We've always had a faithful team arrange the show room and assemble the exhibit easels. This year the members arrived at 5 PM and by 6:30 we were ready for Show Time.

Congratulations go to Jere Greider, who has filled the Expo chair in recent years and to Walter Mowrer for heading the exhibits = ditto! Jere, back in the club's early years, had urged LCPC to take on the responsibility of a show. We fin-ally got our feet wet in 1993. Due almost entirely to the Expo (and thanks to Jere) we've had successful shows each year and netted enough income to keep LCPC in the black. Jere is often confronted with dealer cancellations, but with a good waiting list, there's never been a problem filling a vacancy. It happened again this year, so your program (printed in advance) shows some discrepancies.

### Why an Expo?

For those who wonder why LCPC is the only club that calls its show an Expo, here's the answer: Charlie Griffith, member #2, noted that our first show – in 1993 – would be exactly 100 years since the first U.S. official postcards were issued at the World's Columbian Exposition in Chicago in 1893. In addition, 1993 would also mark 60 years since the Chicago Exposition. Charlie had strong feelings for telling others about our hobby and thought exhibit boards could do that.\* Our first year we had nearly 100 boards, a record still unbroken. Though he intended "expo" to serve for just that first year, it has persisted and given us a description unique among postcard club shows. And now you know.

\*It's also a reason for our monthly card or board exhibits.

Like many recent shows, attendance was down – 189 tickets sold. A number were Instant Door Prizes = certificates redeemable at dealers' tables. The majority of dealers polled, seemed well satisfied. All are especially grateful for the easy load/unload facility and the kitchen's offering of a variety of good home-cooked food.

### Information Please

Saranna Miller is researching the H. M. Alexander & Co. laboratories at Marietta, and is esp. interested in dating "The Pines" postcards by postmarks, messages, etc. This was an early resident/office of the Dr. H. M. Alexander Co. Contact her at 717-426-4891, [mhbmillier2@centurylink.net](mailto:mhbmillier2@centurylink.net) or P. O. Box 506, Marietta, PA 17547. Thank you.

### Future LCPC Programs

Sept. Member Participation

Oct. Tom Beck - Beyond Penn Square, West

Nov. Member Market

Dec. Dede Schaeffer – A Christmas Journey

### Future LCPC Monthly Competition

Sept. The Letter "M" (a board)

Oct. Colored Leaves (a single card)

Nov. Turkeys or Eagles (a single card)

Dec. Sledding or Sleighing (a single card)

### Future Shows with some Postcards

Sept. 18 Wind Gap, Pa Plainfield Twp. Fire Co.

Sept. 24, Oaks, PA Convention Ctr. Book & Ephemera Fair

Oct. 1-2 Allentown Fair Grounds Book, Paper and Advert.

## 2011 Expo Exhibit Boards

### CHILDREN

**First** Walt Mowrer Children with Their Toys and Pets

**Second** Cheryl Edwards Children and Their Dalmatians

**Third** Bud Heim The Youth at Christmas

#### Honorable Mentions

Donald Brown Children at Mooseheart

Bob Kramer All the Little Children

Harold Moyer Future Generations

Ruth Moyer Kids Will Be Kids

James Tanis Holland Mania Kids

Jim Ward Life at Bethany

### HOLIDAYS

**First** Jim Ward Holiday Snowmen

**Second** Cheryl Edwards Holiday Honeys

**Third** Bud Heim They are All His for One Day

#### Honorable Mentions

Donald Brown Leap Year Greetings

Bud Heim Fun Night

Bob Kramer Those "Other Holidays"

Walt Mowrer Santas in Silk

Harold Moyer Cats in October

Ruth Moyer Children with Santa

### TRANSPORTATION

**First** Jim Ward Easter Witches' Brooms

**Second** Bud Heim The Conestoga Traction Co. in Lanc. Co.

**Third** Donald Brown U. S. Transportation, 1750-1930

#### Honorable Mentions

Rich Edwards "All Aboard" for the New Year

Bob Kramer Amtrak

Walt Mowrer Child Transportation

Harold Moyer Trucks

Ruth Moyer Street Cars

### VACATION SPOTS

**First** Rich Edwards Our "Favorite" Places

**Second** James Tanis Monte Carlo

**Third** Jim Ward Our Alpine Adventure

#### Honorable Mentions

Donald Brown Vacation Destinations of the Linen PC Era

Bud Heim Vacationing on the Susquehanna

Harold Moyer Yellowstone National Park

Ruth Moyer Vacation at the Beach

Dick Pendergrast Murmansk

Dick Pendergrast Yellowstone

**Best of Show** Jim Ward Easter Witches' Brooms

**People's Choice** Walt Mowrer Children w/Their Toys, Pets

**JUDGES – Ralph Edson, Doris Kay Feight, Mike Schwartz**

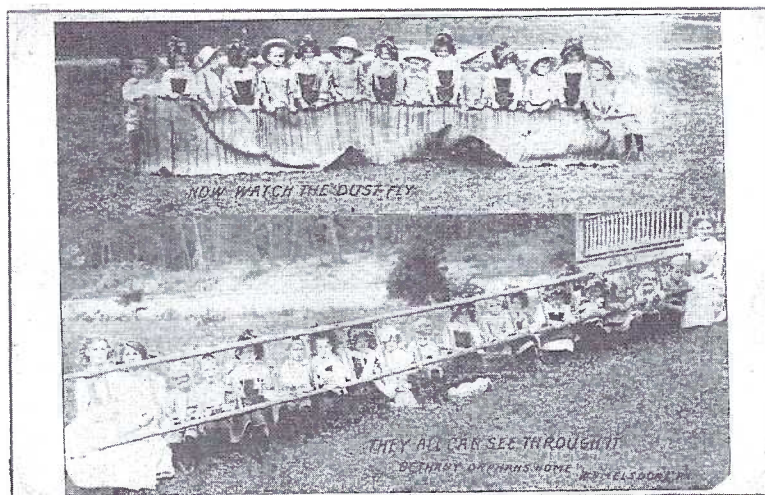
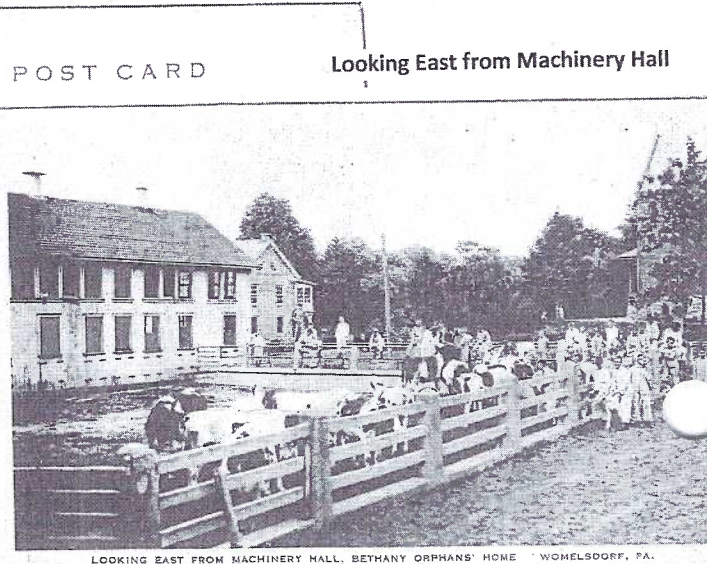
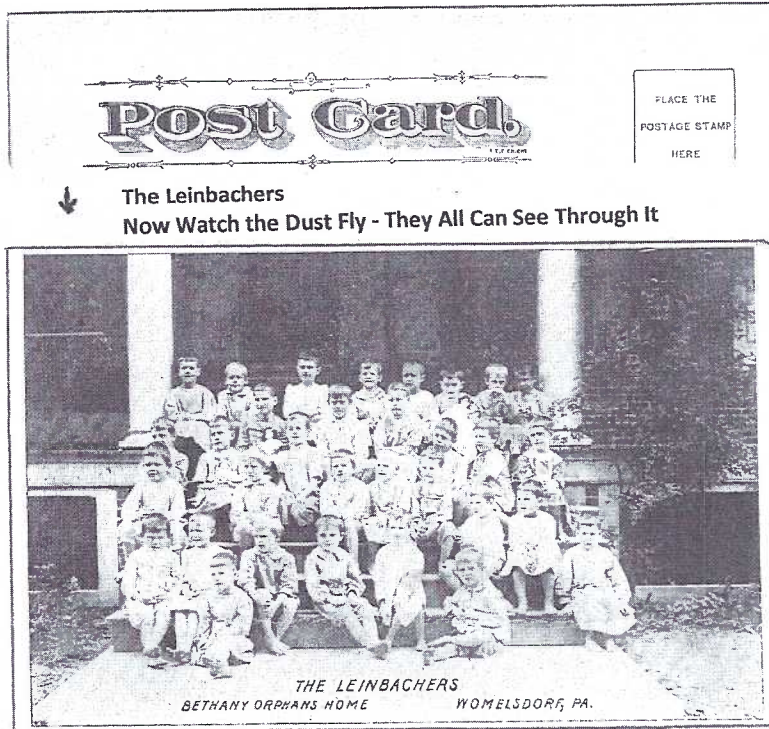
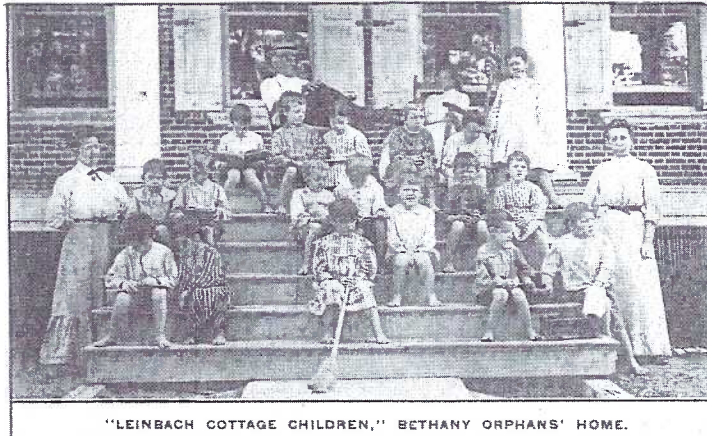
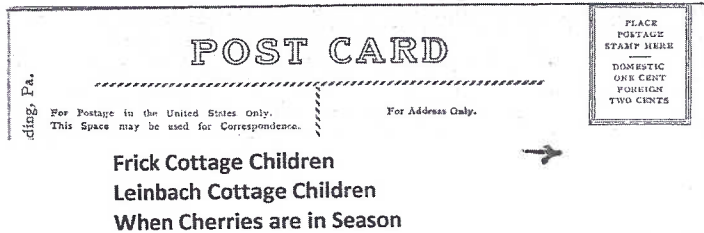
A huge THANK YOU goes to all the participants and especially to the judges for their time and efforts.

Oops! Last issue your editor not only mis-named Susan Glass' husband, Joe, as "Richard" but also placed her service as a nurse in the National Guard instead of Army Reserves. Two apologies go to Susan who's spending a well earned vacation with Joe in Hawaii.



## Bethany Home Postcards, Part III

We continue a listing of constructed Bethany buildings to aid in dating postcard views: 1901 a new School House, 1906 the Silo, 1907 Leinbach Cottage, 1910 Memorial Gateway, 1911 Applegate Lodge, 1912 the Hospital (Reber Cottage), 1913 Bausman Memorial Church, 1914, the Reservoir was enlarged, 1916 Bausman Mem. Church rebuilt after a 1915 fire, 1917 Tower Clock installed, 1919 Dietrich Cottage, 1920 Anniversary Pavilion, 1922 Catherine Moyer Cottage, 1923 Machinery Hall and Flag Pole erected, 1926 Knerr Cottage and the Spring is covered, 1927 Pump House, 1930 Old Hotel, Carpenter Shop removed, 1931 Spiese Bldg., and Reed Cottage, 1932 Lebo Farm (6 acres) purchased. Views of Bethany children from Harold and Ruth's collection continue, divided by publisher reverses.



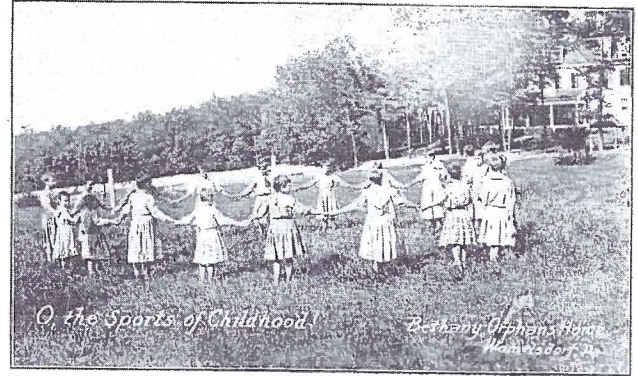


A Bunch of Merry Girls  
Every Stone Must Go Along  
Is There Pie Enough for All?  
Old Faithful  
O, the Sports of Childhood!  
Over the Wall and Under  
The Broncho Busters  
Where Boys and Ducks and Turtles Meet

# Post Card



*A Bunch of Merry Girls. Bethany Orphans Home, Womelsdorf, Pa.*

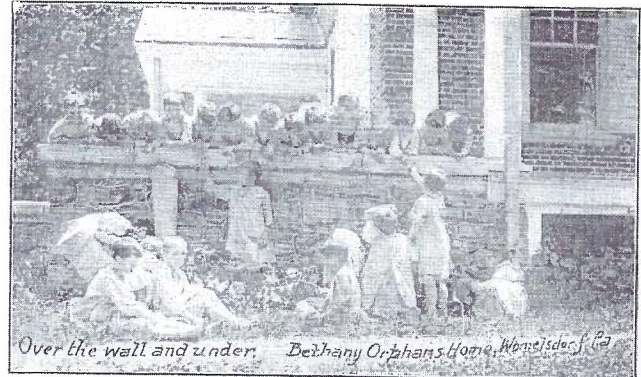


*O, the Sports of Childhood!*

*Bethany Orphans Home, Womelsdorf, Pa.*

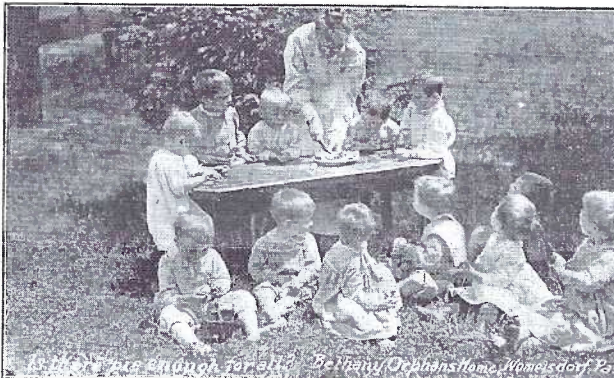


*Is There Pie Enough for All? Bethany Orphans Home, Womelsdorf, Pa.*

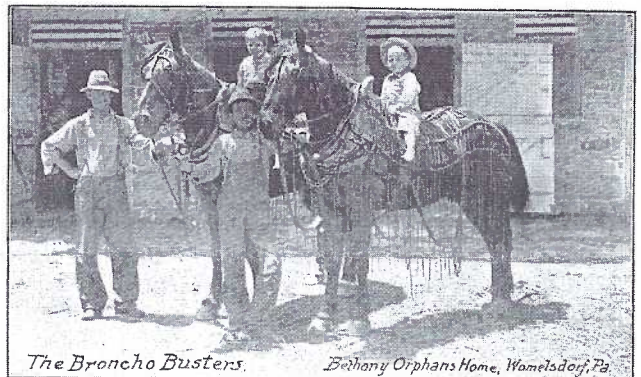


*Over the wall and under.*

*Bethany Orphans Home, Womelsdorf, Pa.*

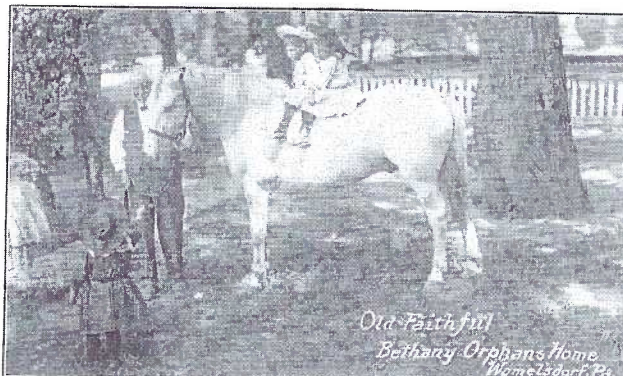


*Is There Pie Enough for All? Bethany Orphans Home, Womelsdorf, Pa.*



*The Broncho Busters.*

*Bethany Orphans Home, Womelsdorf, Pa.*



*Old Faithful*

*Bethany Orphans Home, Womelsdorf, Pa.*



*Where Boys and Ducks and Turtles meet.*

*Bethany Orphans Home, Womelsdorf, Pa.*



## Stevens, PA

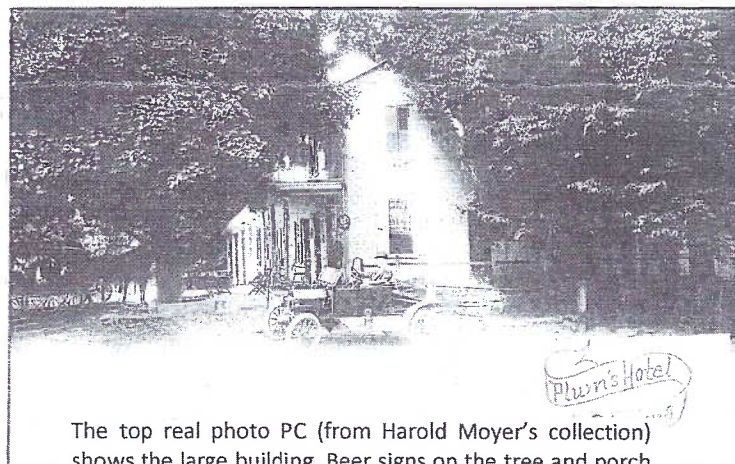
The postal address for Stevens, PA is one of those anomalies frequently found in the routing of U.S. Postal Service deliveries. Stevens, PA has on its western terminus Golden Witch Fly Technologies, manufacturers' of \$1,500 bamboo fishing rods and on its eastern terminus Rustic Country Heirlooms and Martin's Mulch Products both east of Reamstown. In that 12-mile stretch are numerous towns and villages *with* post offices under their own name, but *without* home deliveries. We are by-passing those "burgs" and confining our story to the village of Stevens, PA.

There were few residents and fewer buildings in Stevens prior to the Reading and Columbia RR coming through in 1864. At that time a post office was established and the town named for recently deceased Thaddeus Stevens, Congressman from Lancaster County.

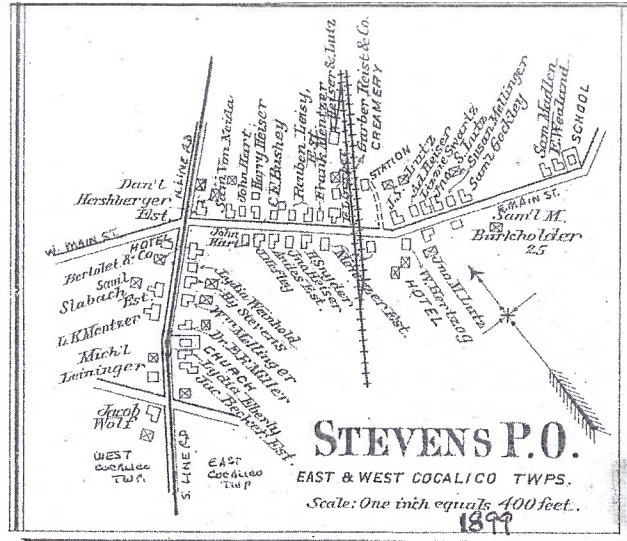
Main Street runs approximately east and west through the town. Line Road runs north and south. The latter name might have been chosen since it divides East and West Cocalico Townships. The town lies in both townships, the major portion in East Cocalico Twp. with the railroad. On the southwest corner of Main and Line Samuel Slabach built in his store and tavern in the late 1850s. He was also the first postmaster in Stevens (1864). Ownership of the store and tavern (in West Cocalico Twp.) changed hands numerous times until it came to William Plum in 1898.



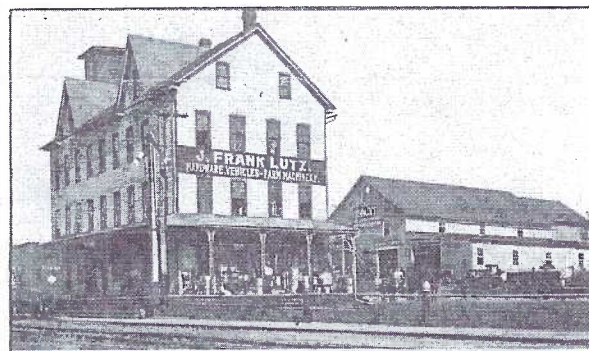
PLUM'S HOTEL AND STORE, STEVENS, PA.



The top real photo PC (from Harold Moyer's collection) shows the large building. Beer signs on the tree and porch suggest that the tavern was on the corner and the general store to its left. The stamp box is from the 1904 to 1920 era. Plum sold the building to Harry Moyer in 1923. The lower RP view has a 1904-1918 stamp box. The gentleman in the derby and ragtop is unidentified. Today the Stevens Post Office offers counter and box holder service only. Carrier sorting and pick-up recently moved to Denver.



For a time the Stevens P. O. was near the railroad station on East Main St. (East Cocalico Twp.). This RP view, mailed in 1910, shows the entire post office staff – Harrison Z. Enck with his RFD No. 1 wagon and horse on the left. His route covered 28.5 miles. Harry R. Ludwig, on the right, had RFD No. 2 and covered 25 miles every day. The postmaster in the doorway *might* well have been J. F. Lutz whose grand 2 ½ story home is seen behind the diminutive post office. At the left, rear, is a large paint and carriage repository also belonging to Lutz.



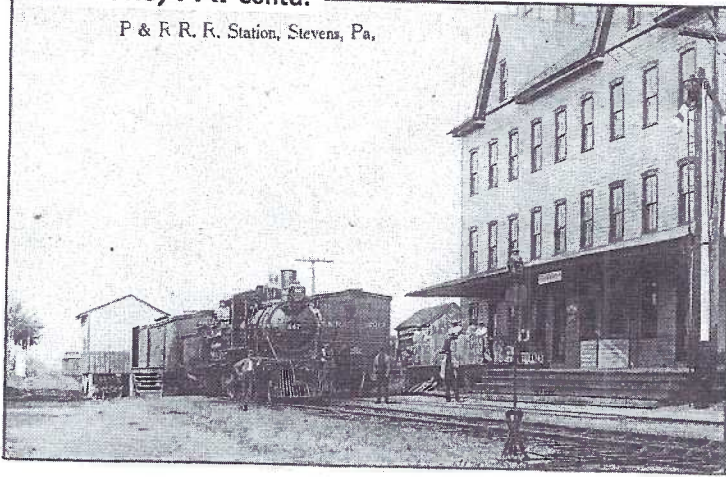
J. Frank Lutz's Hardware Store and Carriage Repository, Stevens, Pa.

Without a doubt the most often found Stevens PC view is this d/b by Express Print, Lititz. It shows the J. Frank Lutz Hardware Store and Carriage Repository. Now gone, the huge building must have been the meeting place of the village in its day. The paint and carriage shop on the right still stands, but as storage shed.

Continued on next page.

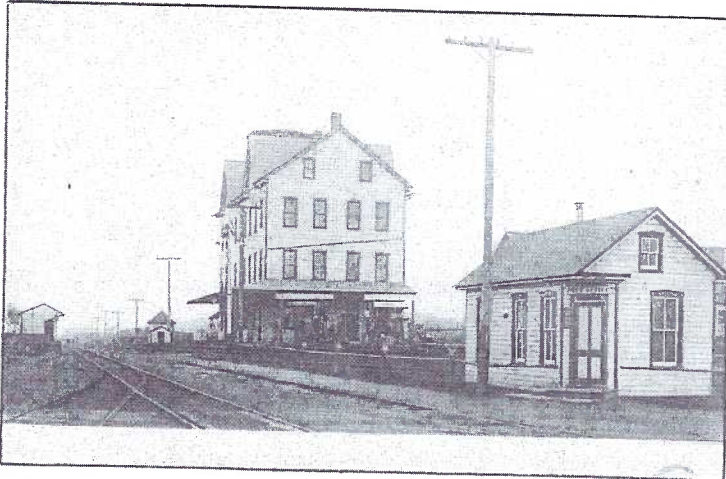


P & R R. R. Station, Stevens, Pa.,

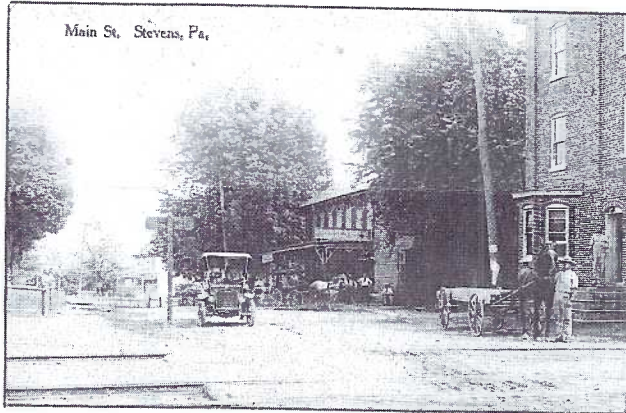


An excellent RP of the Lutz Hardware Store, this view shows how close the RR tracks were to the business that also housed an express office and telephone line according to the signs on the station platform. The view has a 1904-1918 stamp box.

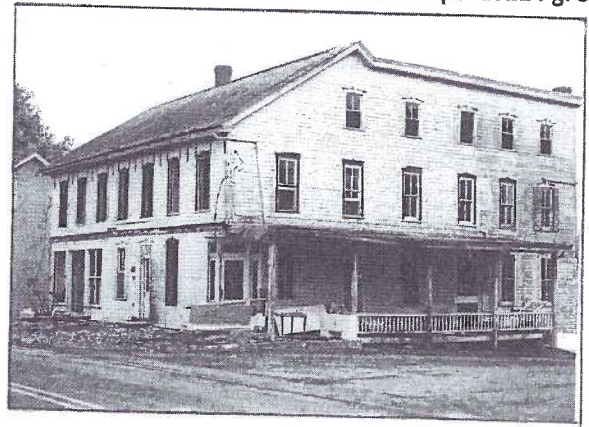
Another RP view (1907-1909) shows the proximity of the little P. O. building to the RR tracks and Lutz Hdwe. Store.



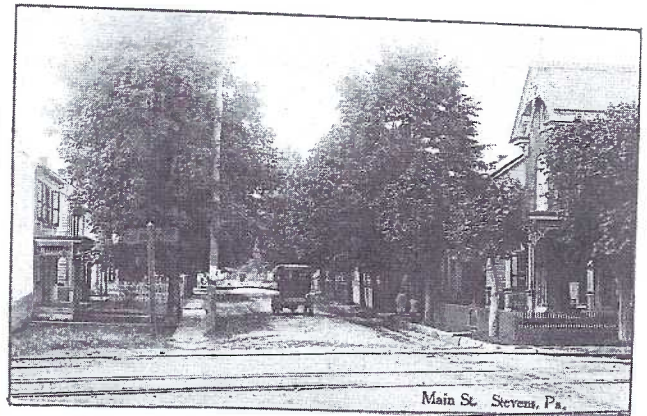
Main St. Stevens, Pa.,



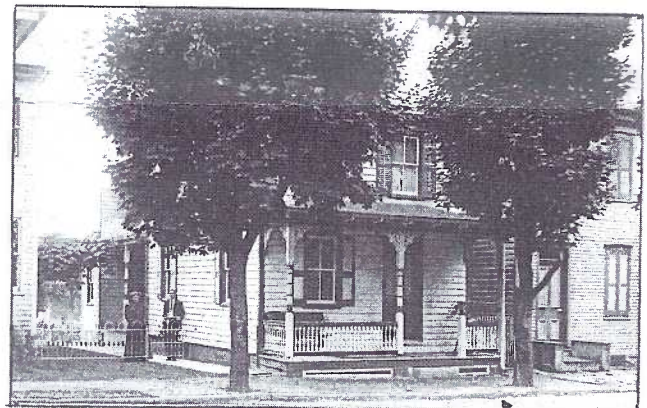
Across E. Main St. from Lutz' Hdwe. and the small P. O. you can see the large Metzler warehouse (right) and just beyond it the Stevens House later known as the Hertzog Hotel. The 1917 message to Harvey Mellinger, Lanc., Rte. 5 reads in part, "Ruth, Will U meet me at Forney on Sat. afternoon about 4 o'clock. If it rain (sic) I don't come till Monday. Ruth, you take a 6¢ loaf bread for me on Saturday. From Mother."



The next view is that same hotel. It was mailed to Harold and Ruth Moyer in Feb., 1997 and reads, "R&H, This is a Stevens PA landmark just before its demolition. It's also one of two photo-postcards made of the structure by me in Dec, '96. Jim Ward."



You'll do a "double take" when you see the little old car buzzing down E. Main St. in this view. We might well suspect the photographer took his snapshot looking at the same car head-on in the Metzler/Hertzog picture above. and now that it's crossed the RR tracks, he got a snap-shot of the tail end! The house on the right is substantially today as it was 100 years ago. The house on the left is now a parking lot next to the RR tracks.



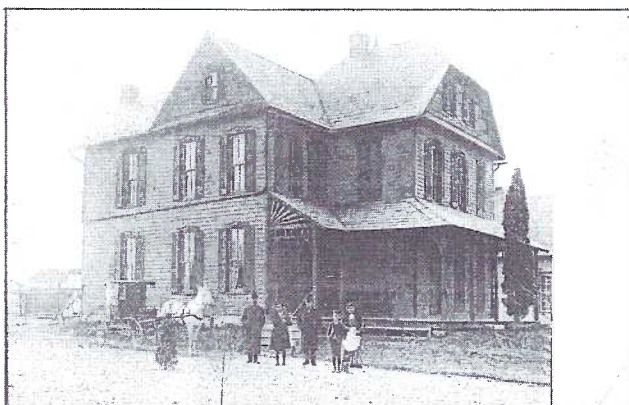
Sitting midway between the Plum Tavern and Store and Frank Lutz's Hardware Store is this neatly kept home at #11 E. Main St. It has gone from white to a deep blue with an enlarged front window and a bay window added to the yard side of the home.

Continued on next page.





At the eastern edge of town is the 8-class Stevens Public School; grades 1-4 downstairs and 5 to 8 upstairs. It's now a residence and little changed except for the missing bell tower. The 1913 message says it's "the most important place or building in Stevens." Not so for every-one. Harold Moyer attended for a short time. He says he was not involved, but he *does* relate this 1947 tale as told by a buddy. "Donnie Graybill and Howard Lorah tickled the teacher in the outhouse. They stuck a willow branch up the clean-out hatch." Harold couldn't remember which teacher was the victim but he *did* remember Dutch and Donnie both "got it" from the teacher and Dutch "got it" again when he got home. The 1899 map shows the location of an earlier school across the road.



At #45 South Line Road stands this once handsome 2 ½ story residence, the home and office of Doctor Miller. We see him here with his team and family. A penciled note refers to it as "Mrs. Miller's home, nee (born) Lizzie Plum." Can we speculate she was from the William Plum (tavern and store) family? Today the home is a derelict. (This view is from Harold Moyer's collection.)



"Mr. and Mrs. Geo. Ludwig." A previous owner of this card notes Ludwig "was Justice of the Peace when I was a boy (1912)." Referring to the mail carriers (little P. O. view) we know H. Ludwig serviced Rte #2. It ran from Stevens to Reamstown. On that rte. a 1910 directory lists two Ludwig families. Did Harry deliver to his family and/or the JP?

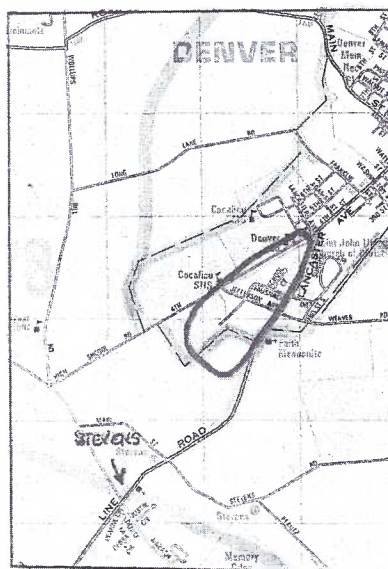


Stevens Amusement Park is seen on this b/w view by an unknown printer with photo by Stoner Studio, Ephrata. If the crowd seems unusually large for a village like Stevens, don't doubt your eyes. In 1928 a fledgling Stevens Amusement Service Co., Inc. comprised of four local friends with Harry K. Fausnacht at the helm, bought land located south of Denver and less than a mile north of Stevens.

Through days of travel, brilliant cajolery and diligent promotion, Fausnacht and friends offered folks in northern Lancaster County – and beyond, hundreds of attractions in the short span of just four years. During one week (June 21-28, 1930) you could see a professional balloon ascension, an aerial display, auto exhibits, a marimba band, concerts, a boys' band, a male chorus, unusual rides and a variety of vaudeville acts...*all in one week*. When the U. S. Army Band played, 50,000 free tickets were distributed in a drawing for two Whippet automobiles.

Later that year acts featured the Sunshine Minstrels and a night parachute jump amid fireworks by Reckless Johnson using several million candlepower searchlights. Broadway stars, a Wild West rodeo, WJZ radio guest artists, the South Seas Islanders, and more were offered for a mere 25¢ admission. Gerardo lasilli, a Brooklyn musician, was so impressed, he composed a military march, "The Stevens Exhibition," performed on the amusement park grounds. Sadly, on June 16, 1931, Fausnacht was killed in an auto accident and the Stevens Amusement Park died along with its 28 year old founder.

We've seen two promo postcards, both with the same view, but listing different attractions in the message space. Neither one is dated. On the map we've designated the approximately 20-22 acres that comprised the park. The site is now occupied by St. John's United Church of Christ as well as an extensive residential neighborhood.



<p><b>POST CARD</b></p> <p>CORRESPONDENCE ADDRESS ONLY</p> <p>STEVENS AMUSEMENT PARK</p> <p>Between Ephrata and Denver.</p> <p>Presenting 2 Gigantic Days of FUN and FROLIC</p> <p>Saturday Evening, Sept. 28th.</p> <p>Sunday Afternoon &amp; Eve. Sept. 29th.</p> <p>Starting Radio's Favorite Artists</p> <p>OZARK MOUNTAIN HAWAIIANS.</p> <p>The Mt. Boys, BLACKY &amp; SMOKY</p> <p>OZARK MOUNTAIN BOYS.</p> <p>Direct from Keith Vaudeville Circuit</p>	<p>PLACE STAMP HERE</p>
	<p>PAUL BETTLER'S Checker Orch.</p> <p>8 men, just back from 15 weeks engagement</p> <p>at the Casino, featuring the Holiest Dance</p> <p>Musical Troup</p> <p>REFRESHMENTS</p> <p>ADMISSION 15¢</p> <p>AMPLIFICATION FREE PARKING</p> <p>CHILDREN UNDER 12 FREE</p> <p>3 Sets of Dishes Given Free away each Day.</p>