

# THE CARD – Vol. 23, No. 1, Issue 255, January 2012

A Publication of the Lancaster County Postcard Club, Lancaster, PA

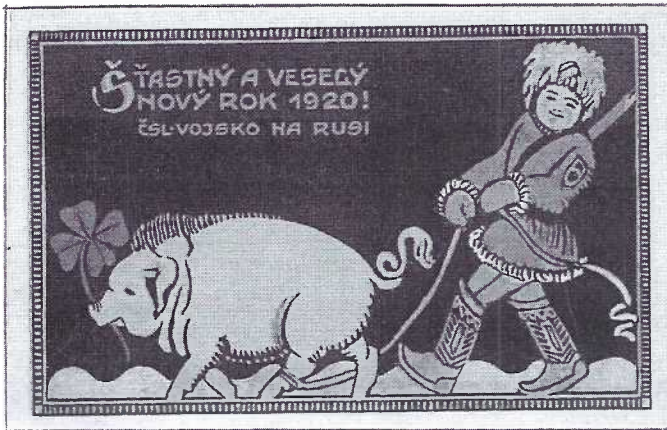
*Enjoying postcards through education and entertainment.*

Next Meeting: Jan. 16, 2012. Farm & Home Center. Buy, Sell and Trade from 4:30. Meeting - 7 PM.

Yearly membership is \$10 (\$5 for each additional member at the same address.)

Membership chairman: Richard Pendergrast, 950 Willow Valley Lakes Dr., I-506, Willow Street, PA 17584.

Club website: [www.playle.com/clubs/lancaster](http://www.playle.com/clubs/lancaster) or Google search: Lancaster County Postcard Club.



## Happy and Joyous New Year 1920 Czechoslovak Army in Russia

World War I in Eastern Europe was drawing to a conclusion. This great card was sent by the Czech troops from Siberia to their families back home with good wishes and plenty of luck = the pig *and* its 4-leaf clover.

*From Wikipedia:* More than 90,000 Czech volunteers formed the Czechoslovak Legions in Russia, France and Italy, where they fought against the Central Powers (Germany, Austria, etc.) and later with White Russian forces against Bolshevik troops, at times controlling much of the Trans-Siberian railway...Their goal was to win the Allies' support for the independence of Czechoslovakia.

Christmas 1919 and the 1920 New Year came while they were in Siberia and this and similar postcards were issued. The back has "Post Card" in Czech and Russian. Along the left-hand edge is: "Lithography Inf-lighting. Czechoslovakian Union. Troops in Russia." A supposition is that either the PCs were printed in Czechoslovakia and sent to the troops to be mailed home, or they were printed in Russia for mailing to Czechoslovakia. This is yet to be sorted out.

## Lancaster County Postcard Club (LCPC) Offices for 2012

**President** Bob Zink\* 717-285-5342

**Vice-President** Mark Arbogast 717-517-1170

**Treasurer** Barabra Mowrer 717-684-5331

**Secretary** Gisela Withers 610-582-2131

### **Directors 2011-2012**

Susan Glass 717-872-0810

Al Schaub 717-569-6276

Dede Schaeffer 717-392-3955

### **Directors for 2012-2013**

Walter Mowrer 717 - 684-5331

Ruth Moyer 717-336-6644

James Tanis 610-728-5179

## December Meeting/Party

And a good time was had by all – if you were one of the 48 (one shy of last year) who attended our traditional Christmas party with a dash of Business Meeting thrown in. The Social Committee + had the large room looking quite festive when we began our potpourri meal at 6 PM. The usual appetizing Hots and Colds provided everyone with ample delicious foods – mostly homemade. Thanks go to all who offered their help to set up and clean up.

We were once more pleasantly entertained with a plentitude of Christmas cards from Dede Schaeffer's collection. This year's program, using the Elmo projection system, included nearly 50 postcards pertaining to preparation for the holiday. They reminded us of the hundreds of details we've come to take for granted. This part of Dede's *Christmas Journey* included postcards of the last 50 years. The second part of her show included nearly two dozen Santa "types" from countries around the world. Most of these as we've come to know from Dede's collections are the seldom seen, much appreciated postcard rarities. The conclusion of the program was the original Christmas Journey with, again, scarce cards but of the Nativity. Thank You, Dede for the time and effort in assembling your program.

President Bob Zink, did not attend. Unfortunately Mrs. President (Lois Zink) had recently fallen (coming out of the doctor's office) and mashed her elbow, so the presidential family was nursing the mishap at home. We wish Lois at speedy recovery. She's still recuperating from a broken leg of a year ago. In his absence, Doug Milliken presided. After reading the new slate of officers and directors, the entire group was automatically elected. (See elsewhere.)

It's always a pleasure to see long-distant members make the trek. We were happy to see Cheryl and Richard Edwards from Kensington. MD, Doris Kay and Jim Feight from Chambersburg and Dolores and Leon Rowe from Kenneth Square and also beyond the county, regulars James Tanis from Audubon and Gisela Withers from Geigertown. Thanks for trekkin'.

Door prizes were the Christmas centerpieces and poinsettias, donated by Dede. Thanks, again!

## Committee Chairs for 2012

**Programs** – Mark Arbogast

**Membership** – Dick Pendergrast

**Hospitality/Social** – Sharon Gromis

**Monthly Competition** – Gisela Withers

**Annual Expo** – Jere Greider

**The Card Editor** – Jim Ward

**The Card Mailing** – Barb Mowrer

**Publicity and Website** – Tom Beck

**Show Schedules** – Dede Schaeffer

**Club Table** – Shared by Susan Glass Sharon Gromis,  
Barbara Heim and Barb Mowrer

\*First LCPC president to serve two consecutive terms

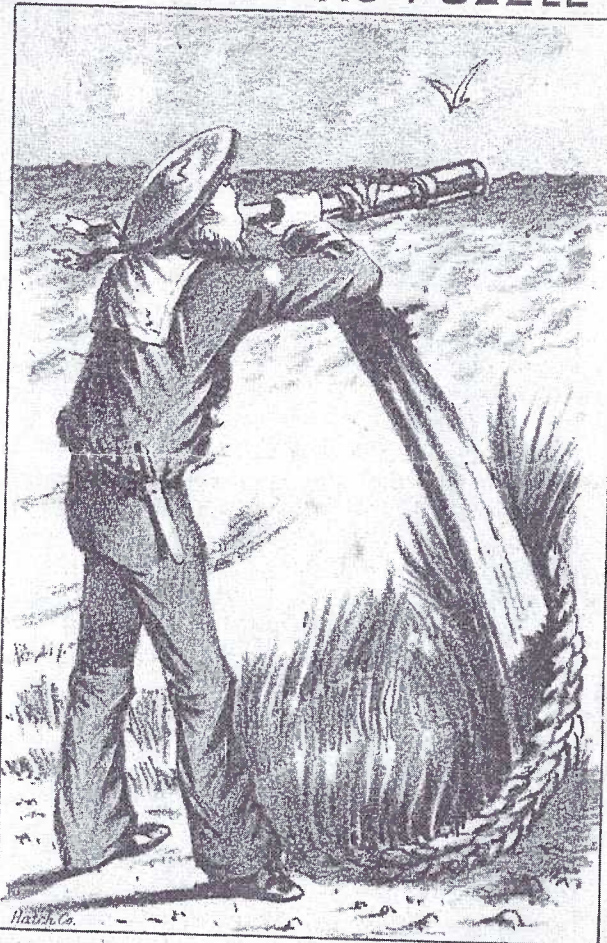


## A Warm Indoor Activity

Twenty-two years ago a contest was held to choose a name for our club's monthly newsletter. The winning choice was **The Card**. One reason the editor back then chose that name was to allow plenty of leeway for articles that covered more than postcards, including Trade Cards. Seldom have TCs appeared in **The Card**, but in this issue we've chosen a genre that was popular 130 years ago - Puzzle Trade Cards. They still offer plenty of challenge.

The two vertical cards were published by the Malt Bitters Company. The third TC is by Sherman & Keech, a Boston Dry Goods Store. Answers are in this issue. The cards are enlarged by 15% to make the search easier.

### MALT BITTERS PUZZLE



*Where is Little Buttercup* (over)

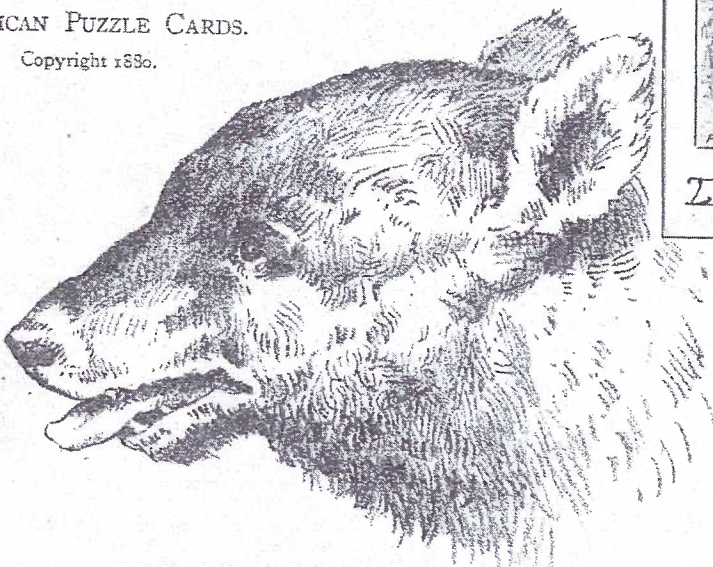
### MALT BITTERS PUZZLE



*Little BoPeep with five of her sheep.* (over)

AMERICAN PUZZLE CARDS.

Copyright 1890.



WHERE IS MY MASTER ?

(Over.)



## January Program

It's anniversary time for LCPC. Our first meeting was Jan. 1990, so we'll have a big cake – enough for everyone – and Ruth Moyer promises another spectacular full-color postcard image on top. So bring your cameras!

The January program will be **Member Participation** – an annual January Show 'n Tell session. Dig deep and find a postcard that has a special anniversary in 2012. HINT: like The War of 1812, or something that happened or someone who was born in 1852, 1912, 1952, 1937 (75 yrs.), 1887 (125 yrs.), 1862 (150 yrs.), etc.

We'll use the Elmo set-up, so no more charred cards like we might have expected from the old opaque projector. Allow yourself a couple of minutes to explain your card to the membership.

### Inclement Weather

With the possibility of a meeting cancellation, we have included phone numbers of all officers and directors (Page 1). Should you be in doubt about the club meeting because of the weather, call one of the above. A decision will likely be made by noontime.

## December Card Competition

The subject was an easy one and it brought out a fine group of Sleds and Sleighs to welcome in a new season.

**First** Harold Moyer Flexible Flyer Sled  
**Second** Gisela Withers A Sledding We Will Go  
**Third** (ties\*)  
 Bryan Benner Pine Cone People  
 Ruth Moyer The Snow Family  
 Marie Schurz Sledding and Apples  
 Jim Ward A Pig Pulls a Sled

### Honorable Mentions

Doris Kay Feight Old Time Sledding  
 Jere Greider Girls Sledding  
 Walter Mowrer Girl and Sled (RP)  
 Judy Smoker Valentine Sledding

### Other Entries

Steve Mummert Angels' Christmas  
 Dede Schaeffer A German Christmas  
 James Tanis Dutch Christmas Boy

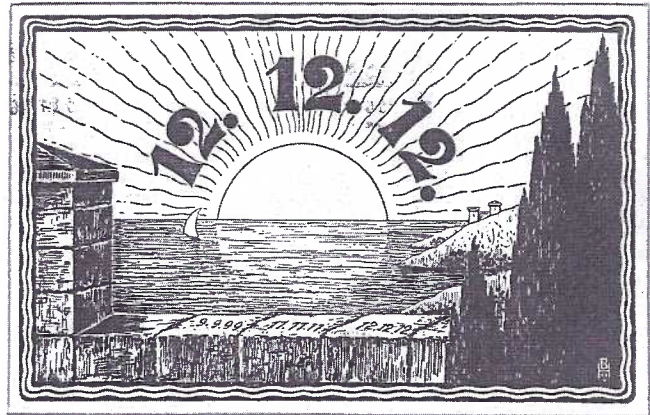
Congratulations to everyone.

\*Should there be ties in the future; beginning in January we will return to the routine of voting to break the tie.

**Jan. subject** – ADVERTISING (single PC) See complete list for 2012.

## 2012 Subjects for Monthly Postcard Competition

January	ADVERTISING
February	YESTERYEAR
March	FOREIGN (board)
April	EASTER
May	COSTUMES (board)
June	ENERGY
July	SEAFOOD
August	(no meeting - work on Expo boards)
September	ANIMALS IMITATING PEOPLE (board)
October	HALLOWE'EN
November	ROADSIDE AMERICA (board)
December	CHRISTMAS MARKETS



### A Commemorative Postcard Mailed on 12.12.12.

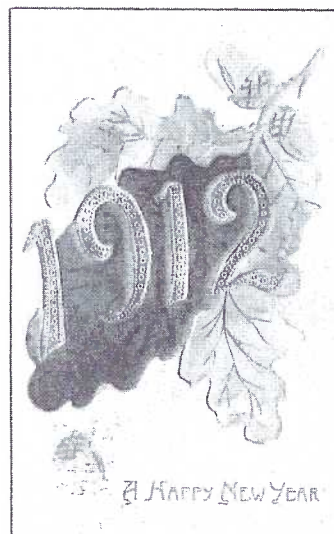
His mother mailed this postcard to Willie Rupprecht in Erfurt, Germany on Dec. 12, 1912. Mothers Day is celebrated in springtime in most countries around the world but this **12.12.12.** postcard was issued for the founding day of The **Mother's Day International Association** which came into being - December 12, 1912. It was formed to promote and encourage meaningful observances of the event. Her appropriate message, cancelled at the Erfurt, Germany post office between 5 and 6 PM (5-6 N) on 12/12/12 is, "Your Mother is sending you warm greetings in remembrance of today's date."

## Tentative Programs for 2012

**Jan.** A Special Anniversary in 2012 \*  
**Feb.** A Favorite card \*  
**Mar.** Cambridge Springs - James Tanis  
**Apr.** Members Market\*  
**May** Early Picture Postcards - Jim Ward  
**Jun.** America at Night, 1900-1914 - Earl Long  
**Jul.** Picnic \*  
**Aug.** Expo. No meeting.  
**Sept.** Columbia's Firehouses and Fires - Bud Heim  
**Oct.** Members Market\*  
**Nov.** "Love is in the Air" - Al Schaub  
**Dec.** Favorite Christmas Card \*

\* **MEMBER PARTICIPATION**

This New Year greeting was mailed from Bakers – field, CA on Dec. 24, 1911. Miss Elinor Morrison, Seneca, Venango Co., PA had to be delighted with the beauty of the heavily embossed leaves and acorns; one leaf applied in velvet! The "1912" is also embossed in bright gold. The message was received in ample time, "Suppose you will be getting ready to go back to school. Hope you have a good time in 1912."







## Another Real Photo Puzzle – Or Is the Puzzle Solved?

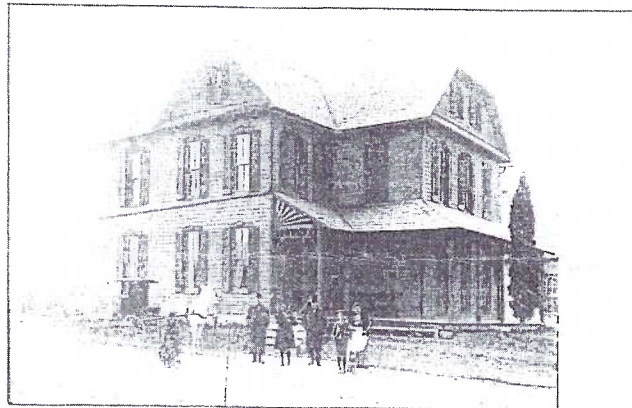
Recently we ran (in the Nov. CARD) two unidentified real photo postcards. They were located within days and Dede Schaeffer thanks Bob Shirk for that deed. **Harold Moyer** gave us this real photo to show. He says it looks like dozens of Mennonite meeting houses that dot the County, but he notices the ladies' hats are NOT prayer caps. (See enlargement.) Your editor found he had the same RP and penciled on the back was Baumgardner's Church, but w/no location. Enter our "Southern End" Expert, **Howard Steinberg** who identifies it as the Byerland Mennonite Church, which just happens to be a short distance south of the village of Baumgardner (west of West Willow Street). Your editor made the trip not expecting to see the old church. He didn't. But near the top of the south end of the present church were neatly embedded, one above the other, these four date stones: *Erbauet Durch Die Bruderschaft Der Mennonisten Gemeinde im Jahr\* 1848 – Rebuilt 1879 – Rebuilt 1953 – Rebuilt 1994*. The folks in the floral hats? Do you suppose they're "only lookin" since the shuttered windows would tell us the church is closed for the day. Thanks HS.

\*Built by the brotherhood of the Mennonite community.

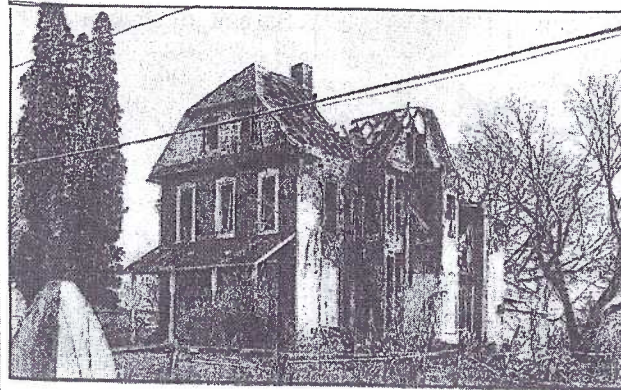


## In the News

It was the Sept. CARD that featured the village of Stevens. On our postcard tour, Harold Moyer and I agreed that a 3-story home on South Line Rd. was one of the "stars" of Stevens. In the early morning of Dec. 12 that star shone for the last time. When a fire raged through it, the home and its family of four was reduced to a single survivor, a daughter who jumped from a second floor window. Because of similar tragedies, thousands of postcards across the country become our only memories.



The Miller/Plum home on Harold's real photo postcard.



The home after the December 12, 2011 fire.



## Lancaster County Lime Industry

For a February article on an early local industry, let us hear from members if they have any postcards showing lime kilns, lime quarries or other local lime industry cards. We don't need your postcards, but we *would* like this information -

The complete caption on the card.

The description on the back of the card, if any.

The publisher and/or printer if available.

and location, especially if not included on the postcard.

Sending a scan would also be a great help.

Please send directly to the editor at [midcreek@ptd.net](mailto:midcreek@ptd.net).

Also, please identify yourself in the Subject Line so your message isn't deleted as spam. Thanks. Credit will be given for all information used as well as your postcard view.

This example is a b/w divided back view of Meck's Falls in Vince Hoover's meadow outside New Providence. It's on the curve of the White Oak Rd. near #222. We don't expect nearly this much info (which comes from the extremely informative book, *Now and Then in Providence Township*.) Deadline for this next issue is Jan. 25. Thanks.



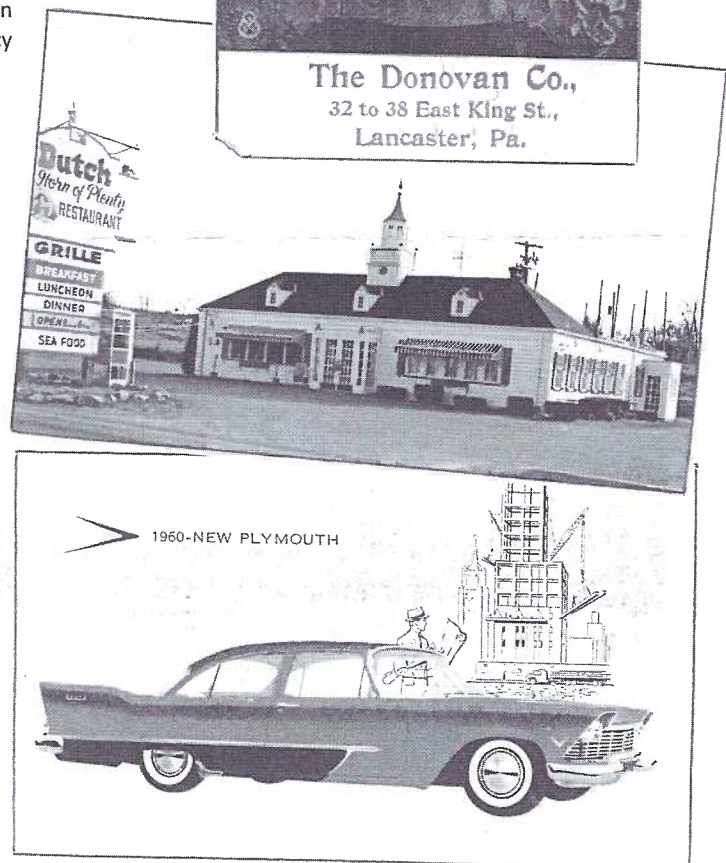
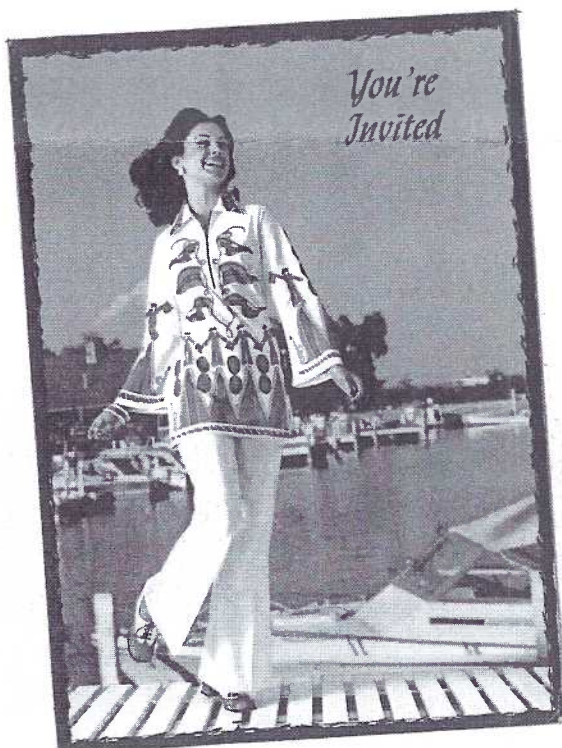
January's program should bring out dozens of participants - members should have at least one postcard advertising a business or service. It needn't be local. It needn't be old. Here are several local examples.

Donovan's, just off Penn Square, featured the New Home sewing machine on an early d/b but unaddressed card.

The Dutch Horn of Plenty was "On U.S. Rte. #30 opposite Dutch Wonderland, featuring Mrs. Usner's Kitchen. It resembles the old Howard Johnson building, doesn't it?

Eshelman Motor Co., Inc. was on W. Orange & Pine Sts. in the former West End Market - the one that had a roller skating rink on the second floor. This PC was stamped "Dick Glouner, Sales Rep." It has a Dec. 1956 postmark.

Ellen Marks was inviting you "To a thrilling Fashion Wagon Style Show at my home. Bring a friend." Choice of dates - Mar. 30, 31 or Apr. 2, 1973, 8:30 till 3:30, at 217 W. Main St., Mt. Joy, Pa." It was mailed to a neighbor, Mrs. Nancy Weber at 124 E. Main St.





## Father Time

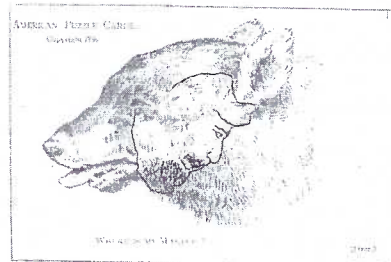
One of the attractions of collecting New Year's postcards is looking for its icons and certainly one of these is **Father Time**. Many collectors consider the art of Frances Brundage (1854-1937) superior to that of another popular PC artist, Ellen Clapsaddle, and these two (in a set of six) cards bear out this claim. On the two cards the artist has replicated the three girls and two boys down to their hair styles and clothing colors. It's as though Ms Brundage kept her subjects in the posing room until she had finished sketching the two poses. The cards are in Series #1301 by Sam Gabriel (a large "G" on a palette).

As accomplished as Brundage, but not nearly as plentiful on postcards, is the work of Lyman Powell (1878-1971). Here we see Powell's **Father Time** sheltering the young New Year who will soon take charge, only to end as a bearded, wrinkled old sage after twelve short months, the coming year a particularly rough one that will include an American presidential election. Series #84 by Taylor Platt.



## New Source to Identify Your Postcards

In 1982 The Historical Society of the Cocalico Valley celebrated its 25<sup>th</sup> anniversary with an informative book, "A Turn of the Century View of Ephrata." Since then the Society has published eight more well illustrated volumes, some hard cover, a few featuring postcards. The latest, "Through the Years: Photographic Views of the Cocalico Valley" is an excellent addition, researched and written by the Society's Librarian, Cynthia J. Marquet. The 240-page tome is limited to 700 copies. Its carefully digitized large 175+ photographs make the book well worth \$35. If you have interest in the northeastern area of our County, we suggest you contact the Society at 717-733-1616 about a copy.



Answers to  
A Warm Indoor Activity