

THE CARD – Vol. 23, No. 8, Issue 262, August 2012

A Publication of the Lancaster County Postcard Club, Lancaster, PA

Enjoying postcards through education and entertainment.

There will be no meeting in August. Attend the Expo Aug. 18 – 9 to 5 at Farm & Home Center

Club website: WWW.playle.com/clubs/lancaster or Google search: Lancaster County Postcard Club

JULY MEETING

Barabra and Walter Mowrer hosted the club's annual picnic at their home on a beautiful sunny day. It was a relaxing afternoon spent socializing and enjoying good food. In attendance were 14 members and guests – Barb and Walter Mowrer, Dick and Doris Pendergrast, Gisela Withers, Harold and Ruth Moyer, Mark and Lena Arbogast, Win and Maris Schurz, Doug Milliken, Susan and Joe Glass.

Following the meal Mark Arbogast conducted a brief business meeting. He pointed out that come September the Club will need to start work on developing 1) a slate of officers & directors for 2013 and 2) a schedule of programs. He also noted that the club will proceed with efforts to procure for itself the designation of "non-profit organization".

20th ANNUAL LCPC POSTCARD EXPO

The Expo will be held Saturday, August 18th, 2012 at the Farm & Home Center. Topics for the board competitions at the Expo will be: **WHO? WHAT? WHEN? WHERE?**

Walter Mowrer is again in charge of the Expo Exhibits. Information needed to submit your entry can be found at the bottom of this page. Please complete entry form and bring with your board. A 22"x 28" board is recommended and there should be a title on your entry. Please keep the title an inch or two from the top of your board so the clip that holds the board won't obscure the title.

BOOK SALE! Need a gift? Need a door prize? Look no more. No need to go to a store and waste time shopping. Get a *Windows, Vol. 2* book at the Expo for only \$10.00.

JULY POSTCARD COMPETITION

Eight (8) members participated in the single card competition on the subject "SEAFOOD".

First: Susan Glass New England Clambake

Second: Dick Pendergrast Lobster Ladies

Third: Harold Moyer Maine Lobster

Honorable Mention: Walter Mowrer Thanksgiving Lobster

Additional Participants:

Ruth Moyer Crab

Doris Pendergrast Big Fish

Jim Ward French Fishmongers

Gisela Withers Pressing Cod

Future Subjects

August: Expo – no meeting

September: Animals Imitating People – board

October: Hallowe'en – single card

November: Roadside America - board

December: Christmas Markets – single card

FUTURE SHOWS

August 4 - Summer Chesapeake Postcard Fair, 100 Lagaret Lane, Havre de Grace, MD - 9 to 4

August 18 - LCPC Expo @ the Farm & Home Center, Lancaster, PA - 9 to 5

August 31-September 8 – Brimfield Paper & Postcard Marathon, Brimfield, MA – 10 to 6

September 9 – Central New York Postcard Club Annual Show & Sale, Clinton, NY – 9 to 4

2012 EXPO EXHIBIT FORM

Mail this form or a copy to Walter Mowrer, 4614 Marietta Ave., Columbia, PA 17512 by August 16 or bring it with your exhibit boards to the F&M Center the evening of Friday, August 17. You are encouraged to enter all four categories. If you intend to use two boards (maximum) in a category, please note on this form. Judges will be selected from among the dealers before the show begins Saturday, August 18. They will use the following criteria: **Postcard information 1/3, Presentation & Originality 1/3, Completeness & Rarity 1/3.** 1st, 2nd, and 3rd Place Awards receive \$15, \$10, \$5 in each category. Best of show (\$25) is chosen from the 1st place exhibits. People's Choice (\$25) is chosen by ballot. Every entry, including Honorable Mention receives a souvenir exhibit postcard for 2012. Below is the title for my entry in the category I have chosen:

WHO _____ WHAT _____

WHEN _____ WHERE _____

Member's Name _____ Member's Phone # _____

Postcard Views of McCall's* Ferry and Holtwood

*used with and w/o apostrophe

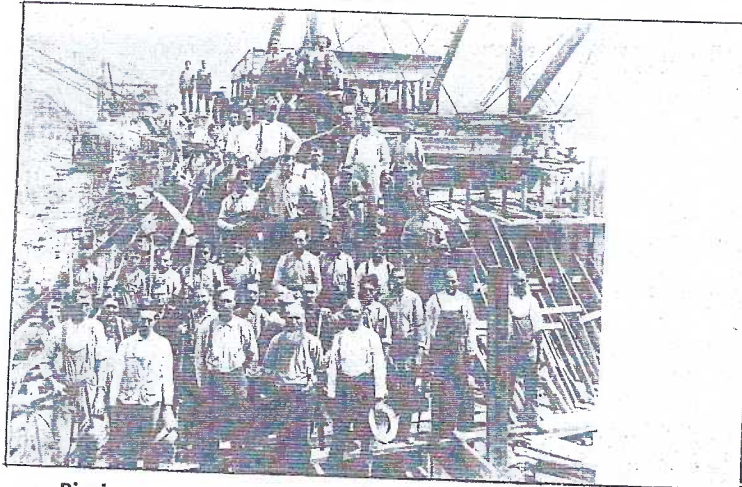
Post Office names:

Bonview ("Good View") May 21, 1892 to Mar. 3, 1906

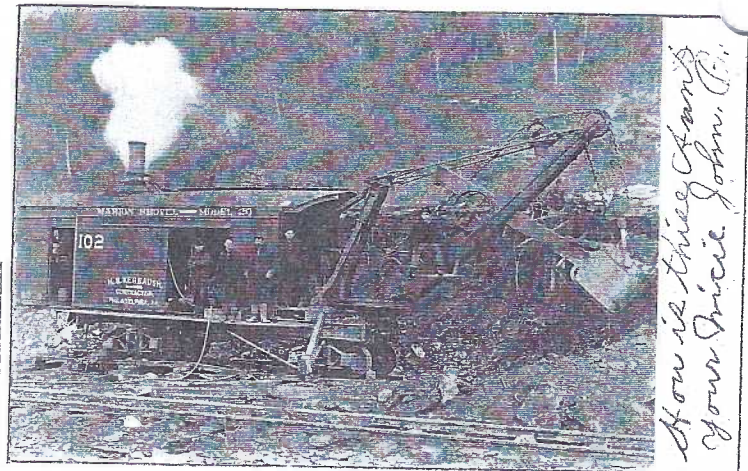
McCall Ferry (no "s") Mar. 3, 1906 to May 13, 1911 (named for the ferry crossing, one of many connecting York and Lancaster Counties

Holtwood May 13, 1911 to Present (Zip 17532) named for Sir Robt. Holt and E. R. Wood, Montreal business men who "bailed out" a project in the financial panic of 1908 that left the John Aldred powerless. Lake Aldred, the backed up water supply behind the dam, is named for this man.)

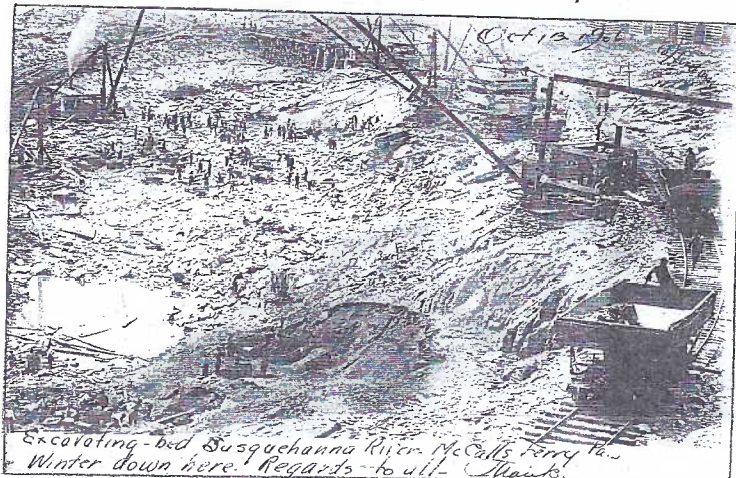
The dam was constructed between 1905 and 1910 by the Pennsylvania Water & Power Company. For a number of years the area and dam were known simultaneously as McCall's and Holtwood, the former esp. by old residents.



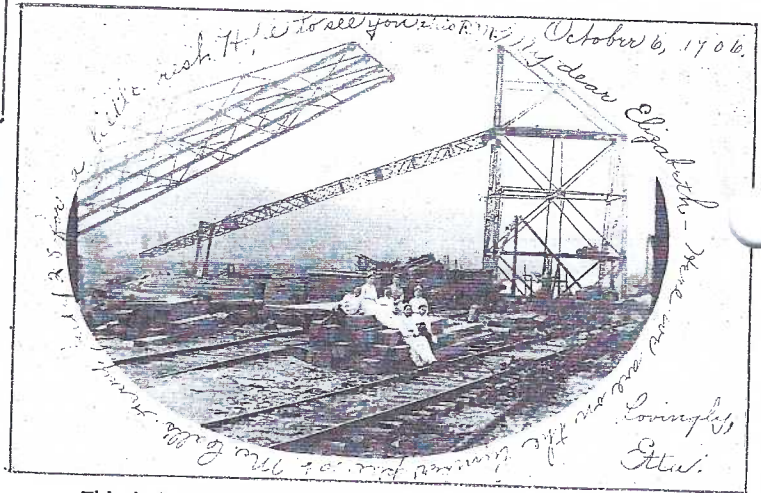
Rigging gang at McCall's Ferry Dam (now Holtwood) 1906.



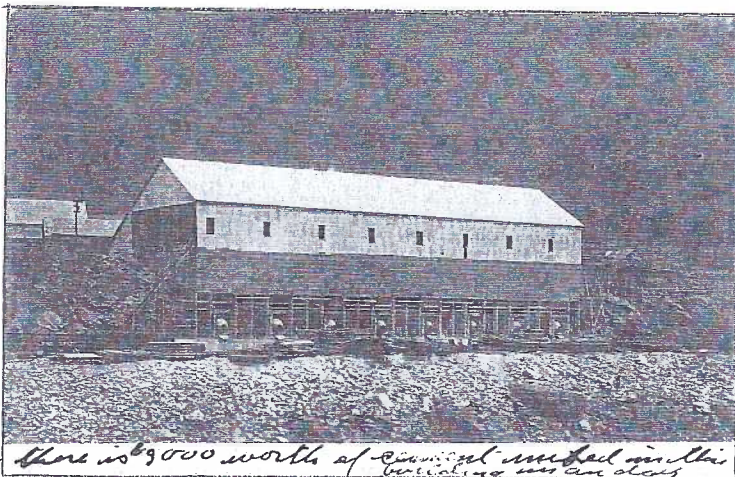
A Marion Shovel, Model 20, manufactured by H. S. Kerbaugh, Phila. PM from McCall Ferry to Chickies, 2/8/07.



Excavating bed, Susquehanna River, McCall's Ferry, Pa.
"Winter down here. Regards to all. Frank." PM 10/13/06.



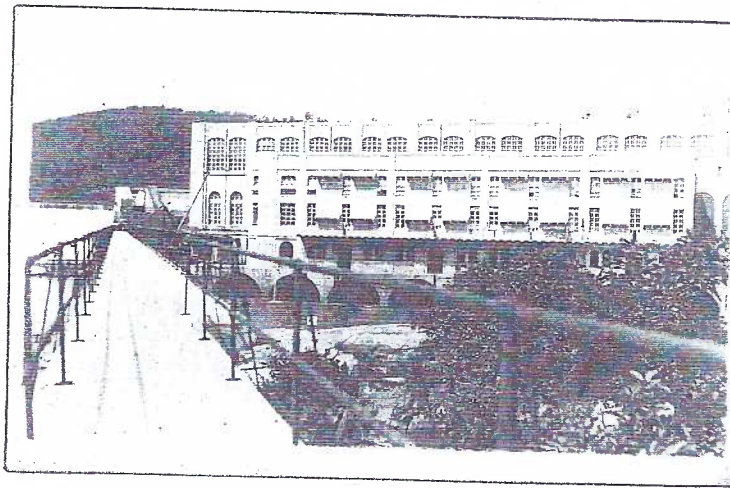
This belated RP dated Oct. 6, 1906 was given to Eliz. Landis, Lanc. RR #7. "My dear Elizabeth, Here we are on the lumber pile at McCall's Ferry, July 28 for a little rest. Hope to see you this P.M." A similar view was given Mary Landis, same address. Sunday excursions were common place to see the weekly progress,



"There is \$9000 worth of cement mixed in this building in a day." Eight cement mixers protrude on the ground floor.



Holtwood 2/10/16; P.O./club house bldg. is on the right.



From Holtwood, 7/17/16 to Phila. "I am writing this card in a Ford. We came to Holtwood at 9 and are leaving at 5. We were through the plant. Your school mate, Violet."

McCalls Ferry Dam PCs were printed by the Conestoga Publishing Co. Lancaster in 1907. The PCs are numbered from #47 to #61. No one has yet to turn up more than these 15 views. Most have divided backs.

Conestoga Publ. Co. "set." (MFD = McCall's Ferry Dam.)

47 Construction bridge MFD. (undivided back)

48 Natural Channel in Susquehanna at MFD.

49 Construction of MFD.

50 Concrete Bridge at MFD.

51 General View MFD.

52 Ice Flood at MFD, March 15, 1907.

53 Wheel Pit at MFD.

54 Beginning Work at MFD.

55 River Bed at MFD.

56 Coffor-Dam, York County Side. MFD.

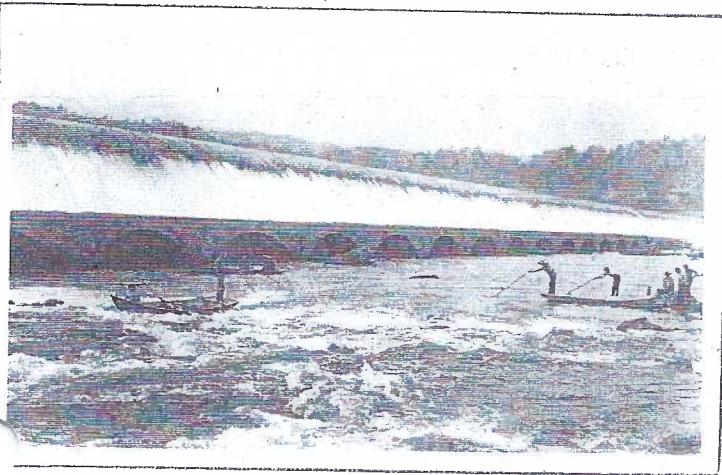
57 Little Italy at MFD.

58 View of MFD Looking from Fry's Island.

59 Construction of Power House MFD.

60 Bird's-eye View of MFD.

61 MFD, Fry's Island and Foot Bridge to Supt. Cottage.



Soon after its completion, sportsmen enjoyed the fishing afforded below the spillway. Several are poling to a new site. The fisherman on the left holds an immense net



S.D. Fry's Store, Dwelling Flooded by McCall's Ferry Dam.



"The Hilltop - 365 Steps" was sent to D. B. Landis from Edw. Musselman at Holtwood, 2/21/18.



In a McCall Ferry PC collection were found RPs of this an unnamed elderly couple and the interior and exterior of their home.

For more info on Holtwood contact our Vice Pres. Mark Arbogast who worked there for many years.



Arthur's Anthropomorphic Animals

Animals doing People Things (anthropomorphic) have always fascinated folks from the earliest postcards; they are especially evident on Easter cards. Aside from holiday images, many **AdPT** cards concentrate on an everyday theme – shopping, cooking, in school, at a picnic, etc. We're blessed with a number of artists who've given us countless grins with their versions of **AdPT** - Maurice Boulanger, William Ellam, Louis Wain, and Arthur Thiele to name a few. Generations later we find postcards printed by Mainzer & Co. that dominate the **AdPT** postcard world. The Mainzer artist, about whom we know so little, is Hart (a small heart is often found in the lower left or right PC corner), mistaken by some collectors for a cat's face).

Here we'll concentrate on **Arthur Thiele's** art. Much of his work is signed, some is not. Many of Thiele's PCs were printed by Theodore Stroefler of Nuremberg, Germany and those PCs invariably have on the back the initials "**T. S. N.**" Others who published Thiele's work were C. W. Faulkner, BKW, GDL (Gebrüder Deitrich), Raphael Tuck and German-American Novelty, etc.

Information on Arthur Thiele was scarce until a few years ago when, in 1998, Adolph Kugler of Munich, published a book (120 pages) about Thiele - his life, his family, his art, and (possibly) the complete list of his postcards. *Unfortunately it's in German!* Without Gisela's tireless translations from the past, I've attempted this time to glean a few facts on my own. **Carl Robert Arthur Thiele** was born Nov. 7, 1860 in Leipzig, Germany. He married Anna (Lena) Louise Fischer. They had at least two sons, Walter and Fritz. Arthur and Anna celebrated their golden anniversary on May 1, 1936. He died shortly after, June 18, 1936. Besides postcards, Thiele illustrated children's books and did commercial art. His postcard subjects, in addition to his anthropomorphic animals, include the Boer War and WWI (esp. propaganda), romance, comics, sports, etc.



Das Geheimnis (The Secret) is in the Katzenkinder group (Cat Children). Following the Thiele signature is "**a M. Wunsch**" which tells us Thiele's "Secret" is copied from the original by **Marie (Mizzi) Wunsch** (1862-1898). Stroefler is the printer and publisher.



There are many sets of six cards each in the long series "Cats in School." Is this Home Economics (above) from set 1828? **Physical Ed** (right) is from set 1882. Theo. Stroefler is the printer/publisher for all. Do you begin to wonder if artist Hart (Mainzer Cats) might have seen Thiele's art?

Susan Brown Nicholson says Thiele's early work "is largely single animal images." His later work includes scenes filled with busy (and often rambunctious) feline youngsters. Some of Thiele's PCs were reproduced in the 1980's. They have a chrome surface and a white back. Postmarked PCs offer a good reason for collecting *used* postcards.





*I wonder if
you love me*



*You ought to see the
other fellow*

"I wonder if you love me" and "You ought to see the other fellow" are signed Thiele cards published by the German American Novelty Art Co., a firm noted for its quality cards. These are two of six in Series 710.



Series 1128 (six designs) is "Dogs after Famous Paintings" and includes the spousal greeting, "Good Morning, my Dear" attributed to critic and novelist T. Gautier. It's published by Leo Stainer, Innsbruck, and printed by T.S.N.

Our background is Thiele's pencil original of "I wonder if you love me."

Arthur's Anthropomorphics and Others

Here is just a hint of Thiele's other subjects –

The Ascension of the Farmer is in the set 409 titled
Balloon Ride by F.E.D. (Friedrich Eyfried, Dusseldorf)
Dwarf Lives, Set 872 by German-American Novelty Co.
Easter Peeps, Set 1376 by C. W. Faulkner, Ltd., London
The Grand March by Souvenir Post Card Co, New York
All were printed in Germany.

Dede Schaeffer reminds us that you can also find Arthur
Thiele's work with Storks and Babies, Autos, Monkeys,
Snowmen, WWI, and more.

