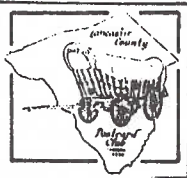


# The Card

PUBLISHED BY THE LANCASTER  
COUNTY POSTCARD CLUB, LANC. PA



MEETS 3rd MONDAY EA MONTH

Faith United  
Church of Christ  
1204 Wabank Street  
Lancaster, PA

April 1992  
Vol.3 No.4

NEXT MEETING:  
Monday 7 pm  
April 20, 1992  
Buy/Sell 6 pm

## PROGRAM

Ex-President and the Very Right, Always Humorous Reverend Earl "Chick" Carver led us down a delightful autobiographical lane with an amazingly large number of local PCs that depicted major events in his life.

His home-town of Marietta was well represented including the First Methodist Ch. of which he wrote the definitive history while a student at Franklin & Marshall.

The oldest active Methodist Church in the USA was a million dollar reason for re-drawing plans for locating the Ben Franklin bridge in Phila.

Marriage to his lovely wife Helen and his four children's births highlighted several more church callings, but his retirement in 1985 was only a corner-turn as Earl has since ministered to 47 different congregations!

We're very proud of this trombonist, Scout leader, dramatist (how'd we know?). And our very best wishes to him, Helen, his 11,000 churches and 300 lambs on postcards.  
**April Program - AUCTION!** (See CARD addendum)



Portion of Ernest Nister #2614



Rotophot RPH, series 551.

See **EASTER EGG TREES** story pg. 4 and 5.

## CLUB PROMOTES NPW

**SATURDAY, APRIL 18** is OUR DAY - at Park City. WILL YOU BE THERE TO HELP?

Publicizing our monthly club meetings in newspapers is fine, but with no postcard show of our own, we must take advantage of this, **our only face-to-face with the public, NO-COST opportunity** to let Lancaster know what we are all about!

What can YOU do? Be at our booth for an hour or two. There are always 3 or 4 members sharing the time.

- 1) Show our MEMBER EXHIBIT BOARDS
- 2) Describe our MEETINGS
- 3) Help sell our POSTCARDS and CALENDARS
- 4) Explain our AUCTIONS and LIBRARY
- 5) Offer to look at COLLECTIONS BROUGHT IN
- 6) Tell others how much YOU ENJOY POSTCARDS!

In a word, promote National Postcard Week (the first week in May) a bit early.

Contact **Jere Greider** at 285-5872 to be sure your name is on the 'help list' or 'exhibit list'.

See our NPW postcards page 2.



## EXHIBITS



ST. PATRICK'S DAY and WIND brought only five entries to the March meeting.

**DON DAVIS FIRST** - St. Patrick's Day

**HAROLD MOYER SECOND** - Erin Go Bragh

**JIM WARD THIRD** - Erin's Flag A'Flying

### HONORABLE MENTIONS

**CHARLIE GRIFFITHS** - Wind

**EARL CARVER** - Windmills

Thanks, gents, for your efforts and to Harold Moyer another Thanks for toting the easel the whole way across the County.

April's topic - **APRIL SHOWERS.**

What's happening, folks? Why the disappointing turnout? Why has the luster gone from exhibiting? Where's the fun and excitement we used to have? The dozen or more entries?

EXHIBITING was a major part of our first two years' meetings. Now it's over in less than ten minutes!

If this sounds more like an editorial than a news story - MAYBE IT IS. But I feel very strongly about exhibiting. It is a perfect reason to collect - not so much a personal show-off, but a way of letting others know what there is to collect, how the variety in postcards is endless, how different ideas can result from similar cards. And most certainly that there is more to postcards than buying and selling or hoarding them into a box in the closet.

True, some of us collect a wide variety of subjects (that's why you see some names reappearing each month). The answer? Maybe the topics should be more general - to include more members - give the gal with only a boxful more latitude in choosing from her collection for the next topic.

Announcing the topics several months ahead might give members more time to pick or find their cards.

A Suggestion Box or verbal input to the Chairlady, Barb Heim, I'm sure would be welcomed.

A minute or two from exhibitors if they wish to volunteer comments about the board.

## FUTURE SHOWS



**APRIL 25** - Great Eastern US Book, Paper, Adv. & Collectibles. Allentown, PA. 9:30-6. ADM \$4.75

**MAY 15-16** - Ye Olde York Bourse. York Mall. York, PA. 10-9 ea. day. NO ADM. CHG.

**MAY 29-30** - Postcard Society, Inc. Howard Johnson Hotel. Hagerstown, MD. 9-6, 9-3. NO ADM.

**JUNE 7** - Susquehanna Valley PC Club. Days Inn. Shamokin Dam, PA. 9-4. ADM. \$1.

**JUNE 19-20** - Postcard Society, Inc. Geo. Washington Motor Lodge. King of Prussia, PA. 9-6, 9-3. ADM. \$2

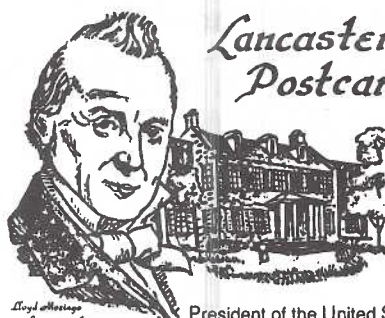


**NATIONAL POSTCARD WEEK**

**MAY 6-12 1990**

Lancaster County Post Card Club

Our first NPW (National Postcard Week) card designed by member #23, Robt. Vaux Roop. Numbered #1 to #200. Sold out. Value \$1/\$2.



**Lancaster County Postcard Club**

**National Postcard Week**

**May 5-11, 1991**

**James Buchanan**

President of the United States of America 1857-1861  
Lived at Wheatland, Lancaster, PA from 1849 until his death in 1868

**Celebrating the 200th anniversary of President James Buchanan 1791-1991**

Our second NPW postcard. Jointly designed by Don Davis, John Long and Jim Ward using an original water-color by Lloyd Mzingo. Numbered #1 to #500. Very few available. Do you have your member number? Now 35¢.



**PHILADELPHIA - LANCASTER TURNPIKE**  
Chartered April 10, 1792

FIRST LONG-DISTANCE HARD-SURFACED ROAD IN THE U.S.A. COMPLETED 1795  
66 MILES LONG WITH 9 TOLLGATES

Issued in conjunction with  
**NATIONAL POSTCARD WEEK**  
May 3-9, 1992  
by  
**THE LANCASTER COUNTY POSTCARD CLUB**  
P.O. Box 300, Lititz, Pa.  
# /500

Our third NPW postcard. Numbered #1 to #500. designed by Timothy P. Schleif and will be available at Park City NPW booth, April 18. 35¢, 3/\$1. Reserve your own member number!

### BON TON HISTORY = MYSTERY

Look at your Woolworth Bldg. postcards! At least four different views show **BON TON** above left window only. Bring yours to the April meeting. Let's compare!



# AKRON, PA

## Published cards

Compiled by Chas. W. Griffiths  
(FIRST IN A SERIES OF LANCASTER COUNTY TOWNS)

Additions to AKRON PA POSTCARDS should be sent to: CHARLES W. GRIFFITHS, 15 Circle Road, Millersville, PA 17551.

### Listing format

- 1 - Printer or Manufacturer
- 2 - Publisher (for whom postcard was printed or manufactured)
- 3 - Inscription on card. Horizontal or Vertical.  
If in ( ), on back of card.

Printer: Unknown

Publisher: M.M.Adams, Akron, Pa.

Backs as illus. above. B,C,D and E presumed to be Adams

- |  |   |
|--|---|
| H Akron Borough School                     | B |
| H East Main St., Akron                     | C |
| H East Main Street, Akron (sepia)          | D |
| H Birds-eye View, Akron                    | E |
| V Evangelical Church Akron                 | A |
| H Ice Dam, Akron                           | C |
| H Jr. O.U.A.M. Building, Akron             | A |
| H S. Ninth St., Akron, Pa. "Looking North" | A |
| H Shoe Factory, Akron                      | B |
| H Usner House, Akron                       | A |
| H W. Main St., Akron (lg. white bldg./ctr) | A |
| H W. Main St., Akron                       | B |
| H West Main Street "Looking East", Akron   | A |

Printer: Auburn Post Card Mfg. Co., Auburn, Ind.

Publisher: None indicated

H The Akron Shoe Factory (blue sky type)

Printer: Dexter Press, Inc., Pearl River or West Nyack, N.Y.

Publisher: Applied Arts Association, Akron, Pa.

13469-B H (Akron Restaurant.....)

Publisher: James R. Dissinger Photography, Brownstown, Pa.

12209-D H (Hillcrest Swim Club, Inc., Akron)

Publisher: Mel Horst Photography, Witmer, Pa.

65019-B H (Akron Restaurant/Village Square Gift Shop)

94278-B V Akron Restaurant..(pics external and internal)

94279-B H (Motel Akron, Akron)(pic exterior and vacancy sign)

Printer: Dynacolor Graphics, Miami, Fla.

Publisher: Don Trout Photography, Akron, Pa.

H (Grace Evangelical Congregational Church...Akron)

H (Zion Lutheran Church...Akron)

Printer: Merrimack Post Card Co.

Publisher: None indicated

H Main St., Akron

Printer: MWM, Aurora, Mo.

Publisher: None indicated

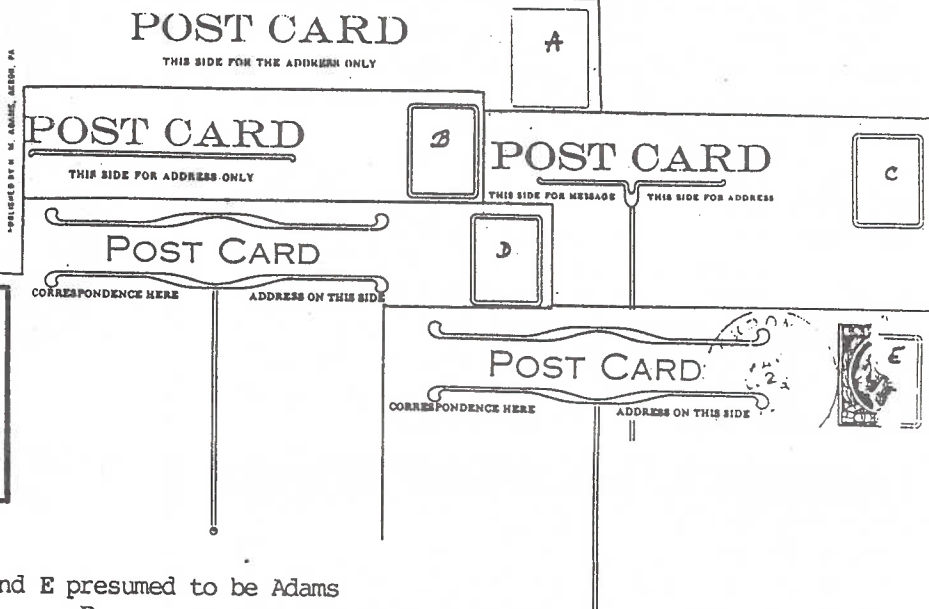
A-3144 H Hesse's Guest Home - Akron, Pa.

Printer: Tichnor Bros., Inc., Boston, Mass.

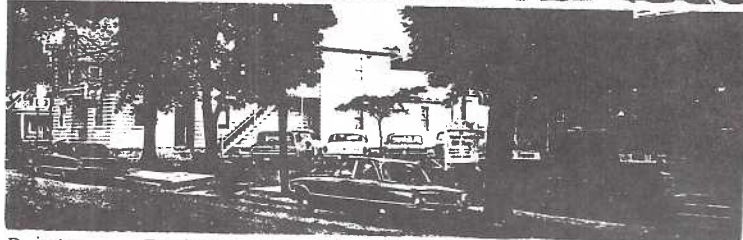
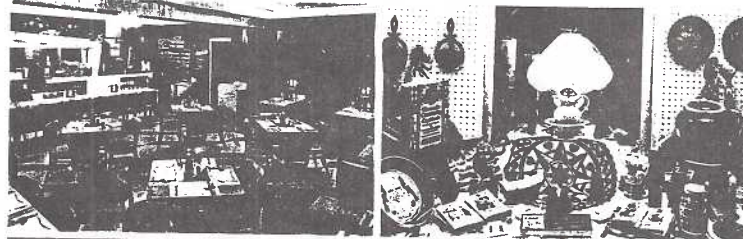
Publisher: "Mellinger Studios", Lancaster, Pa.

82057 H D&B Diner...between Akron and Ephrata

83159 H Hick's Modern Cabins...



Printer: Merrimack Post Card Co.



Printer: Dexter Press, Inc. 65019-R



# EASTER EGG TREES = GERMAN and "PA. DUTCH"

It's only been the past few years that **EASTER EGG TREES** have sprung up conspicuously in Lancaster County. Perhaps weather-proof plastics and styrofoam are reasons.

But did you know that **EASTER EGG TREES** have survived on photographs from 1936 and 1947 from yards in Berks, Snyder and other eastern and central Pa. counties?

Mrs. Elmer Palsgrove (Reading) erected an elaborate lighted indoor **EASTER EGG TREE** and **PUTZ** for several years in the 1940's.

What appears to be a "Pa. Dutch" custom gained momentum when Katherine Milhous's Book The Egg Tree appeared some years ago. But certainly she's a 'Johnny-come-lately', since Lathrop's Annual of 1895 shows an **EASTER EGG TREE** on a table indoors.

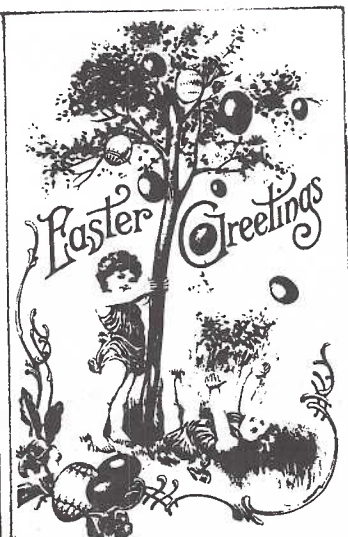
Newspapers from Lebanon, Reading and Norristown cite instances of **EASTER EGG TREES**. From the Norristown Register, April 11, 1887- "Harry Smith celebrated Easter at his home by having a large cedar tree placed in his parlor, standing in the middle of a miniature garden. The tree was tastefully festooned with Easter eggs, all handsomely decorated, and presented a very attractive scene."

And if you have the opportunity to look through several hundred **EASTER POSTCARDS** you're apt to find one. (They seem to be as scarce as one in eight hundred.)

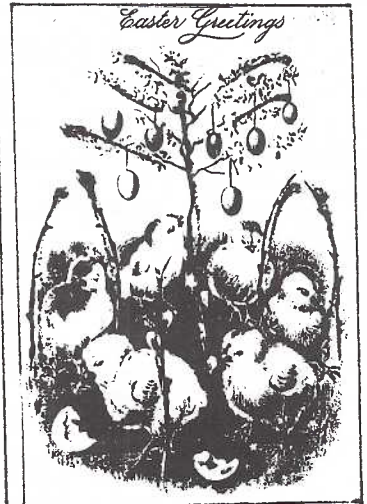
\* It should be noted that "Pa. Dutch" here includes those Lutheran and Reform natives many of whom decorate barns with colorful symbols. Amish and most Mennonite groups refrain from secular practices and are not herein implied.



Unknown publisher.



Unknown publisher, series #228.



Unknown publisher, both series #304.

Alfred Shoemaker in The Pa. Dutchman Vol. IV, #5, 1953 and again in Eastertide in Pa. - A Folk Cultural Study, 1960, concludes that the Easter tree was certainly of German origin - not as universal as der Tannenbaum (Christmas tree) but nevertheless seen quite often throughout northeastern Germany

The children had the job of emptying the eggs (no mean feat). They often gathered hen, geese and turkey eggs throughout the year. After boiling them in different colored solutions of dye-stuffs they became Easter eggs (Oster eier).



Publisher BW, series #289.

Ed. note. I wish to thank Dede Schaeffer, #3 and Jim Rudisill, #66. They provided source material for this article.



## Easter Egg Trees continued

Loops of bright-colored ribbons (always of contrasting shades) were pasted on the eggs to hang, tip downwards. Sugar people and animals (especially lambs and rabbits) added variety to the **EASTER EGG TREE**.

Beneath the tree a wonderful Easter rabbit or Easter lamb presided over gifts and favors concealed beneath it in the Oster Hase's (hare's) nest. Sometimes, if the children were old enough for the challenge. the nest was hidden elsewhere in the house or the yard (today's Easter egg hunt?)

**EASTER EGG TREES** were often bushes and on these exterior showcases the hollow eggs were usually impaled. In fact, many times the eggs were undyed. Of course if you had hens that laid colored eggs - you were set!



Rotophot RPH, series #551.

## REAL LIVE COLORED EGGS!

Now begins a tale of ALL TRUTH. Forget that April Fool's Day just slipped by. Our distinguished President and her First Man have promised me that what follows is TRUE!

Some of you know Pres. Dorathy taught 40 years in one-room schools. And she grew up in farmland. Her husband Harold is a Lancaster City 'transplant' of 50 years ago and since moving to Clay Twp. he has worked a farm and raised chickens, sheep and more!

What follows is an interview with D&H.

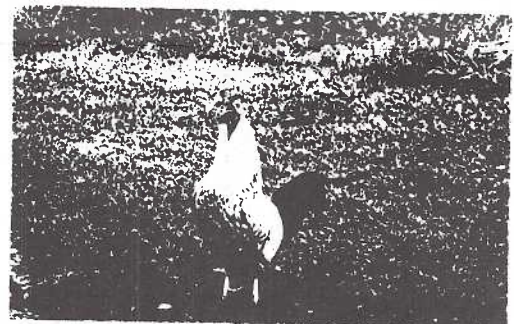
**ARCAUNA** is a breed of S.A. chicken not so much noted for its dark, stringy meat or its gaming talents, but for the hen's ability to lay colored eggs!

Eggs emerge as pale blue, olive green, pale yellow and pink (one color only per hen, please). Color is restricted to the shell only although yolks are always a dark orange. Predicting egg color from hen color is impossible. Nor is food ever a factor.

The chickens themselves come in a variety of mixtures: black w/russet necks, red and pearl grey, white w/dark tips, etc. Even though they are not 'full size' they are still bigger than bantams and amazingly hearty. "Throw-outs" have been known to survive in the wilderness and return with new chicks following the parent!

Now "Milton" was a case. As with many roosters, Milton had a mind of his own. So did Harold. So did Dorathy.

Milton was given as a 'gift' to friends of D&H's in Lexington (Lanc. County). Evidently Milton liked his new home (see photo) but two years was the limit with the neighborhood. RIP Milton.



**MILTON** - a particularly vocal Arcauna rooster. Slept in a pyrocantha bush (outside guest bedroom window); visited neighbors; mysteriously disappeared.

What you've read is eggsactly correct.

Conclusion: buy a few Arcaunas (advertised often in Lanc. Farming News) and raise your own **EASTER EGG TREE** and then issue a few Easter Egg Tree POSTCARDS so they are not so hard to find!!!



## TOWSON POSTCARD AND PAPER SHOW

Postcards, Covers, Cinderellas,  
Advertising, Scrap, Supplies,  
Sheet Music, Books, Other Ephemera

**Saturday, May 9, 1992**

★ 10 A.M. to 4 P.M. ★  
Towson, Maryland

On York road at Baltimore Beltway (I-695) exit 26A. Next to Howard Johnson's in the Dulaney Room of the Quality Inn.

### Scheduled Dealers

★ Roy Cox ★

PO Box 3610, Baltimore, MD 21214

John Cortiss

Previously Owned Postcards

PO Box 20899, Baltimore, MD 21209

S. & J. Collectibles

PO Box 4596, Timonium, MD 21094

Lee Moore

101 Seminole Ave., Catonsville, MD 21228

The Wishbone

1700 Billman Ln, Silver Spring, MD 20902

Leo Frantz

588 Old York Rd, Ebers, PA 17319

George & Marcella Lorden

522 S. Streeper St., Baltimore, MD 21224

Emerald Aisle Postcards

413 E. Lake Ave., Baltimore, MD 21212

### MOTEL INFORMATION:

410-825-9190

### SHOW INFORMATION:

★ 410-433-1532 ★

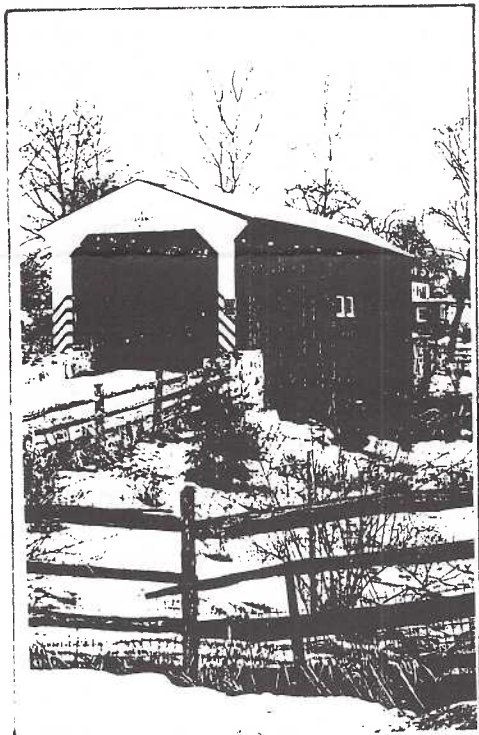
Sponsored by the

**Maryland Postcard Society**

Free Admission, Ample Parking,

Door Prizes, Bargain Boxes!

PAID ADV.



LCPC'S 1990 issue: Full color. 25¢, 25 for \$5, 100 for \$17.50 (History on reverse). Contact Rosemary Litz, member #174, at 569-2543. Great gifts or year-round use.



Publisher J.I.Austin, #A478. Artist H.Horina.

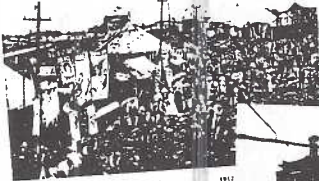


Vice President Don Davis, in addition to being Chief LCPC Jokester, is Program Chairman and as such is delighted to present the following PROGRAM SCHEDULE -

- |                |  |
|----------------|--|
| April 20 -     | Auction  |
| May 18 -       | Coca Cola Postcards by Jere Greider              |
| June 15 -      | Millersville Postcards by Harry Lines, Don Davis |
| July 20 -      | Auction  |
| August 17 -    | Postcard to the Backwoods Lady by Dorathy Fry    |
| AUGUST PICNIC  | -Display Your Favorite Album                     |
| September 21 - | Pretzels on Postcards by Jim Ward                |
| October 19 -   | Auction  |
| November 16 -  | OPEN   |
| December 21 -  | Christmas Party +                                |


## 1992 CALENDAR

featuring reproductions of old postcards  
LANCASTER CITY &  
LANCASTER COUNTY, PA



14 MONTHS!

NOV. 1991  
DEC. 1992



sponsored by the  
**LANCASTER COUNTY POSTCARD CLUB**

meetings: 3rd monday ea. month  
Manheim Twp. Municipal Bldg.  
Municipal Dr., Lancaster, PA  
PUBLIC ALWAYS WELCOME!

62  
OLD  
POST  
CARD  
SCENES

Actual size of calendar is 8 1/2" x 11"

LCPC'S 1991 issue: 8 1/2"x11". 62 Old Postcards with historical notes. Nov. '91-Dec. '92. \$5. Contact Jim Ward, member #1, at 626-4660.



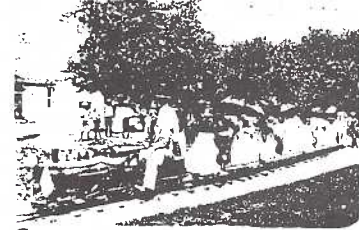
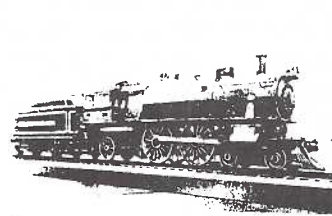
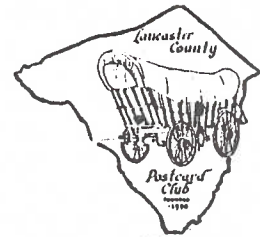
Addendum to April 1992 CARD

# LANCASTER COUNTY POSTCARD CLUB AUCTION #8

Following business meeting (no program) of Monday, April 20, 1992

Lots are postcards unless noted. Descriptions by owners with corrections/additions by Auction Comm. **Examine carefully.** Auctioneer will combine lots when necessary. u=used, un=unused, RP=real photo, \* =lot (or portion) is illustrated

- 1 6 Mixed incl. 40-star flag
- 2 21 Lanc. City and County incl 2 adv. u/un
- 3 21 Ships, boats u/un
- 4 15 Views u/un
- 5 19 Railroads u/un
- 6 6 Railroads u/un\*
- 7 10 Ships, boats (4 diff.) u/un
- 8 25 Train depots u/un
- 9 4 Amusement Park trains u/un\*
- 10 4 Chickies Rock u/un
- 11 2 Advertising = Lanc., York (not pc's)
- 12 4 (incl. 1 RP) McCall's Ferry dam, Safe Harbor un
- 13 4 Trains on New Years, Christmas, birthday u/un
- 14 8 York City, County u/un
- 15 14 Erie, Towanda, Kane, Washington PA u/un
- 16 11 Berwick, King of Prussia, Trevoise, misc. u/un
- 17 19 Poconos=Del. Water Gap, Resica Falls, Bushkill
- 18 8 Comic linens un\*
- 19 14 Watkins Glen, Ausable Chasm u/un
- 20 7 Gettysburg battlefield, etc. u
- 21 10 Bamforth = poems, comics, adv. card u/un
- 22 25 Asstd. birthday u/un
- 23 10 View folders = Pa., Wildwood, Niagara, Linc. Hwy.
- 24 Complete set (36) Presidents by M. Katz, un chromes\*
- 25 20 Trains un chromes
- 26 30 Trains, trolleys un chromes\*
- 27 25 Trains chrome un
- 28 25 Same
- 29 25 Same
- 30 30 Animals chrome un
- 31 35 Horses chrome un\*
- 32 20 Indians chrome un\*
- 33 15 Birds chrome un
- 34 Cabinet photos, etc., mostly Lebanon (not pc's)
- 35 Same
- 36 6 Amish, local scenes un
- 37 6 Same
- 38 6 Same
- 39 6 Same (3 diff.)
- 40 Lanc. = Moss tobacco factory fire (RP) un
- 41 Lanc. = '07 baseball team, creases (Rohrer'sw whiskey sign)\*
- 42 Columbia = '07 baseball team (RP) un
- 43 Lanc. = scarce "Del" confectionery, Chestnut & College Av.\* u
- 44 3 Chickens = 2 RP farmyards, '33 chick prices u/un
- 45 Lord's Prayer, set of 8. Publ. ASB (2 u)
- 46 42 Silk ribbon, silk insert, silk flowers (greetings) u/un
- 47 31 Philatelic = 10 RPO's, 21 commems., feldpost, ship cancels
- 48 84 views = foreign, US incl. 26 Lanc. u/un
- 49 Book (350 photos) "Eastern Lanc. County incl. Terre Hill, New Holland, etc."
- 50 10 Lanc. = McFalls Ferry, Rocky Springs, etc. u/un
- 51 12 Easter children, chickens u/un
- 52 10 Advertising u/un
- 53 10 Birthday greetings u/un
- 54 7 Cats, puppies dressed as people, un\*
- 55 5 Alfred Mainzer cats un
- 56 6 York views, 5 Willow Grove u/un
- 57 10 Valley Forge un
- 58 8 PA Turnpike linens u/un
- 59 5 Lititz area u/un



6

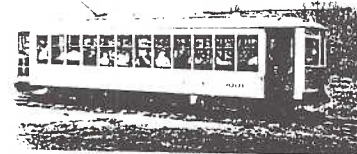
9



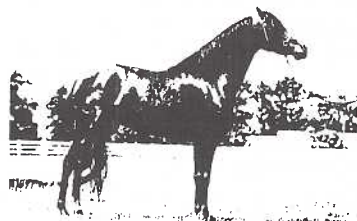
18



24



26



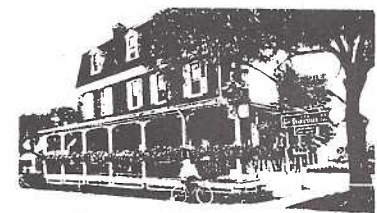
31



32



41



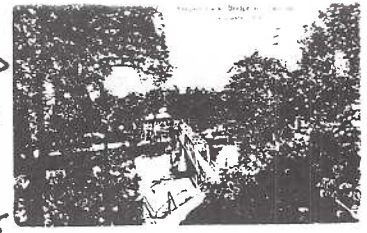
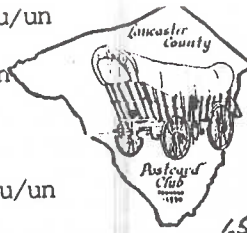
43



Auction #8 continues on page 2....



60 22 Lanc. incl. 1910 Fair, Rocky Springs, Reamstown greeting u/un  
 61 20 Lanc. incl. 9 Little Art Shop u/un  
 62 16 Lanc. curb market, Schmidt's mattresses, W. Siple, etc. u/un  
 63 15 Lanc. incl. churches, Hotel Brunswick "Dutch Room" u/un  
 64 15 Lanc. incl. old Country Club, N. Queen St. etc.  
 65 15 Lanc. incl. Peoples Park, street scenes, temple u/un\*  
 66 16 Views=Media PRR, Boyertown Burial Co., Reading, York, etc. u/un  
 67 8 Views incl. Butler PA, multiview Rhien, WWI military  
 68 8 Views incl. Media fox hunt, Man-O-War, RR's, PO's, etc.\*  
 69 Partial set Lord's Prayer + Reading, RP greetings, Hershey u/un  
 70 Album of 115-120 pc's=Ind. Town Gap, Columbia, Reading, Lanc., Hershey, etc.\*  
 71 Album of 130-140 pc's=York, Hrsb., Phila., holidays, dogs, etc.\*  
 72 33 Mixed greetings, Rally Days, etc. few dups. mostly un  
 73 4 Indians + unused folder  
 74 4 Tuck oilettes = Italy un  
 75 8 Holidays u/un (6 repros)  
 76 6 Monticello (Albertype handcolored, 1928) un  
 77 14 Sheep u/un  
 78 4 Gettysburg u/un  
 79 3 Mountville (D.M. Witmer publ.) un\*



65



68



70



75

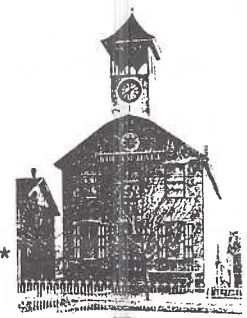
80 5 Libraries incl. Tuck; Mail Card u/un  
 81 17 Niagara Falls u/un  
 82 12 Diners/restaurants, hotels/motels u/un  
 83 20 Hawaii un continentals  
 84 Double pc=map of Lanc. County illus. unusual names un  
 85 Same of Gettysburg with Tami Bakker un  
 86 Old Br. Plymouth hospital un  
 87 Arkansas Sch. of Medicine un linen  
 88 Gettysburg Natl. Bank un linen  
 89 "Free Hug" postcard un  
 90 G-burg battlefield/Gen. Warren enlargement (not pc)  
 91 G-burg=Spangler's Spring un  
 92 G-burg=Gen. Warren PC fan un (new)  
 93 Little Rock, AR=Brinkley Hospital un linen  
 94 5 views b/w Martindale un (4 diff.)  
 95 8 Indians (5 diff.) un chromes\*  
 96 4 Cats doing people things- Mainzer publ. un  
 97 20 Lanc. chromes incl. covered bridges, few dups.\*  
 98 9 Linens incl Watt & Shand u/un  
 99 17 chromes=covered bridges, Harrisburg, etc. un  
 100 11 Misc. views, etc. u/un  
 101 Shirley Temple in Japan, 20th Century Fox\*  
 102 4 Arcade=Tom Mix, Chaplin, Buck Jones, Marie Provost un  
 103 2 Mary Pickford (1 creased)  
 104 2 Salomy Jane  
 105 4 Ladies=movie/stage stars (Maxine Elliott, Zumara, etc.)  
 106 Scene from 'Mutt and Jeff' (vaudeville card)  
 107 Leo Maloney, Pathe Pictures  
 108 4 Movie/stage, shooting of 'Cinerama Holiday', etc. u/un\*  
 109 4 St. Patrick's Day u/un



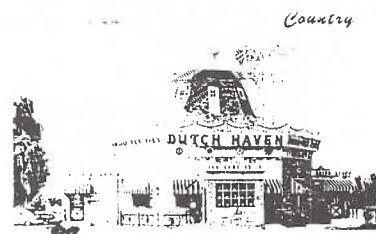
70



71



77



97



101

# **NEXT 3 ARE DONATED LOTS**

110 15 Williamsburg, Swiss publ. un. nice!  
 111 23 Chromes = Bahamas, US motels, etc. un  
 112 2 Folders, 15 linens, etc., 16 miniatures (non pc) Mohawk Trail  
 113 Shoe box= US incl PA., Europe, some greetings  
 114 6 Hershey bar postcards un\*  
 115 Roosevelt Bears= #3 Sleeping Car, #9 Dept. Store (some stains, creases) u\*  
 116 Blacks= 27 children on 6 pc's, all u  
 117 6 Cameras= 4 un linens + 2  
 118 First chromes (Union Oil, 1939)= #49, 50, 55. all 3 un  
 119 4 Silk insert Easter crosses + 2 felt peep appliques  
 120 3 Embroidery = lady, soldier, flowers un  
 121 6 Lovers = farm hands in hay mow, un  
 122 12 Pretty ladies, mixed u/un  
 123 6 Horseshoes and children (New Years) u  
 124 6 Child Mailman w/pony cart (1 dup) u



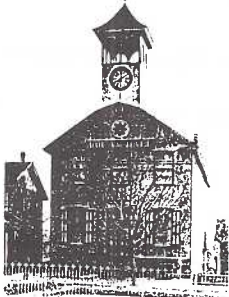
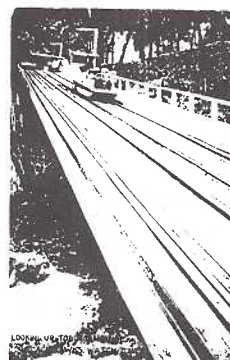
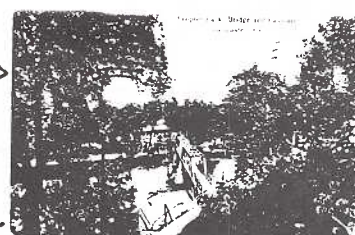
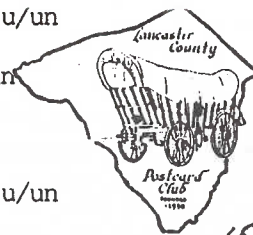
114

115

Prices realized in next month's CARD. Next auction lots due JUNE 15 for  
 Auction #9 July 20. Your comments and suggestions are welcomed.



- 22.00 60 22 Lanc. incl. 1910 Fair, Rocky Springs, Reamstown greeting u/un  
 14.00 61 20 Lanc. incl. 9 Little Art Shop u/un  
 14.00 62 16 Lanc. curb market, Schmidt's mattresses, W. Siple, etc. u/un  
 5.00 63 15 Lanc. incl. churches, Hotel Brunswick "Dutch Room" u/un  
 12.00 64 15 Lanc. incl. old Country Club, N. Queen St. etc.  
 10.00 65 15 Lanc. incl. Peoples Park, street scenes, temple u/un\*  
 9.00 66 16 Views=Media PRR, Boyertown Burial Co., Reading, York, etc. u/un  
 4.00 67 8 Views incl. Butler PA, multiview Rhien, WWI military  
 4.00 68 8 Views incl. Media fox hunt, Man-O-War, RR's, PO's, etc.\*  
 3.50 69 Partial set Lord's Prayer + Reading, RP greetings, Hershey u/un  
 20.00 70 Album of 115-120 pc's=Ind. Town Gap, Columbia, Reading, Lanc., Hershey, etc.\*  
 25.00 71 Album of 130-140 pc's=York, Hrsb., Phila., holidays, dogs, etc.\*  
 2.50 72 33 Mixed greetings, Rally Days, etc. few dups. mostly un  
 .75 73 4 Indians + unused folder  
 1.50 74 4 Tuck oilettes = Italy un  
 1.00 75 8 Holidays u/un (6 repros)  
 { 76 6 Monticello (Albertype handcolored, 1928) un  
 2.00 77 14 Sheep u/un  
 2.50 78 4 Gettysburg u/un  
 5.00 79 3 Mountville (D.M. Witmer publ.) un\*  
 2.00 80 5 Libraries incl. Tuck; Mail Card u/un  
 4.00 81 17 Niagara Falls u/un  
 2.00 82 12 Diners/restaurants, hotels/motels u/un  
 6.00 83 20 Hawaii un continentals  
 1.00 84 Double pc=map of Lanc. County illus. unusual names un  
 1.00 85 Same of Gettysburg with Tami Bakker un  
 1.00 86 Old Br. Plymouth hospital un  
 1.00 87 Arkansas Sch. of Medicine un linen  
 2.50 88 Gettysburg Natl. Bank un linen  
 89 "Free Hug" postcard un  
 1.00 90 G-burg battlefield/Gen. Warren enlargement (not pc)  
 .75 91 G-burg=Spangler's Spring un  
 .75 92 G-burg=Gen. Warren PC fan un (new)  
 .75 93 Little Rock, AR=Brinkley Hospital un linen  
 3.50 94 5 views b/w Martindale un (4 diff.)  
 1.00 95 8 Indians (5 diff.) un chromes\*  
 8.50 96 4 Cats doing people things- Mainzer publ. un  
 4.00 97 20 Lanc. chromes incl. covered bridges, few dups.\*  
 5.00 98 9 Linens incl Watt & Shand u/un  
 3.00 99 17 chromes=covered bridges, Harrisburg, etc. un  
 .75 100 11 Misc. views, etc. u/un  
 1.00 101 Shirley Temple in Japan, 20th Century Fox\*  
 3.00 102 4 Arcade=Tom Mix, Chaplin, Buck Jones, Marie Provost un  
 3.50 103 2 Mary Pickford (1 creased)  
 1.00 104 2 Salomy Jane  
 1.00 105 4 Ladies=movie/stage stars (Maxine Elliott, Zumara, etc.)  
 1.00 106 Scene from 'Mutt and Jeff' (vaudeville card)  
 3.00 107 Leo Maloney, Pathe Pictures  
 1.00 108 4 Movie/stage, shooting of 'Cinerama Holiday', etc. u/un\*  
 4.50 109 4 St. Patrick's Day u/un



# **NEXT 3 ARE DONATED LOTS**

- 2.50 110 15 Williamsburg, Swiss publ. un. nice!  
 3.00 111 23 Chromes = Bahamas, US motels, etc. un  
 .50 112 2 Folders, 15 linens, etc., 16 miniatures (non pc) Mohawk Trail  
 24.00 113 Shoe box= US incl PA., Europe, some greetings  
 6.00 114 6 Hershey bar postcards un\*  
 15.00 115 Roosevelt Bears= #3 Sleeping Car, #9 Dept. Store (some stains, creases) u\*  
 15.00 116 Blacks= 27 children on 6 pc's, all u  
 1.00 117 6 Cameras= 4 un linens + 2  
 .75 118 First chromes (Union Oil, 1939)= #49, 50, 55. all 3 un  
 5.00 119 4 Silk insert Easter crosses + 2 felt peep appliques  
 2.00 120 3 Embroidery = lady, soldier, flowers un  
 9.00 121 6 Lovers = farm hands in hay mow, un  
 8.00 122 12 Pretty ladies, mixed u/un  
 4.00 123 6 Horseshoes and children (New Years) u  
 9.00 124 6 Child Mailman w/pony cart (1 dup) u



Prices realized in next month's CARD. Next auction lots due JUNE 15 for Auction #9 July 20. Your comments and suggestions are welcomed.

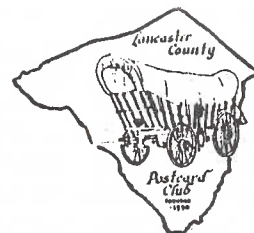


Addendum to April 1992 CARD

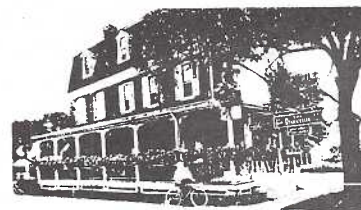
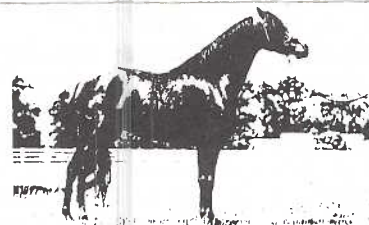
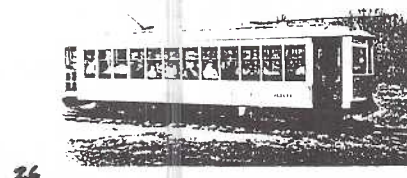
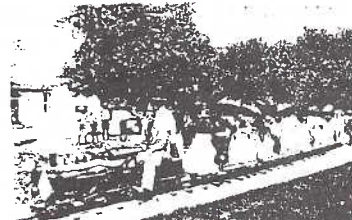
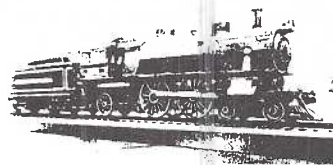
LANCASTER COUNTY POSTCARD CLUB AUCTION #8

Following business meeting (no program) of Monday, April 20, 1992

Lots are postcards unless noted. Descriptions by owners with corrections/additions by Auction Comm. **Examine carefully.** Auctioneer will combine lots when necessary. u=used, un=unused, RP=real photo, \* =lot (or portion) is illustrated



- 5.00 1 6 Mixed incl. 40-star flag  
5.00 2 21 Lanc. City and County incl 2 adv. u/un  
25 3 21 Ships, boats u/un  
75 4 15 Views u/un  
8.00 5 19 Railroads u/un  
3.00 6 6 Railroads u/un\*  
3.00 7 10 Ships, boats (4 diff.) u/un  
6.00 8 25 Train depots u/un  
3.00 9 4 Amusement Park trains u/un\*  
6.00 10 4 Chickies Rock u/un  
2.00 11 2 Advertising = Lanc., York (not pc's)  
2.00 12 4 (incl. 1 RP) McCall's Ferry dam, Safe Harbor un  
4.00 13 4 Trains on New Years, Christmas, birthday u/un  
3.00 14 8 York City, County u/un  
1.50 15 14 Erie, Towanda, Kane, Washington PA u/un  
1.50 16 11 Berwick, King of Prussia, Trevoise, misc. u/un  
2.50 17 19 Poconos=Del. Water Gap, Resica Falls, Bushkill  
1.00 18 8 Comic linens un\*  
75 19 14 Watkins Glen, Ausable Chasm u/un  
4.00 20 7 Gettysburg battlefield, etc. u  
1.00 21 10 Bamforth = poems, comics, adv. card u/un  
3.50 22 25 Asstd. birthday u/un  
4.00 23 10 View folders = Pa., Wildwood, Niagara, Linc. Hwy.  
6.00 24 Complete set (36) Presidents by M. Katz, un chromes\*  
9.00 25 20 Trains un chromes  
5.00 26 30 Trains, trolleys un chromes\*  
7.00 27 25 Trains chrome un  
8.00 28 25 Same  
8.00 29 25 Same  
75 30 30 Animals chrome un  
2.00 31 35 Horses chrome un\*  
1.00 32 20 Indians chrome un\*  
1.00 33 15 Birds chrome un  
3.50 34 Cabinet photos, etc., mostly Lebanon (not pc's)  
1.00 35 Same  
25 36 6 Amish, local scenes un  
75 37 6 Same  
1.50 38 6 Same  
75 39 6 Same (3 diff.)  
10.50 40 Lanc. = Moss tobacco factory fire (RP) un  
10.00 41 Lanc. = '07 baseball team, creases (Rohrer's w whiskey sign)\*  
20.00 42 Columbia = '07 baseball team (RP) un  
34.00 43 Lanc. = scarce "Del" confectionery, Chestnut & College Av.\* u  
10.00 44 3 Chickens = 2 RP farmyards, '33 chick prices u/un  
75 45 Lord's Prayer, set of 8. Publ. ASB (2 u)  
8.00 46 42 Silk ribbon, silk insert, silk flowers (greetings) u/un  
5.50 47 31 Philatelic = 10 RPO's, 21 commens., feldpost, ship cancels  
4.00 48 84 views = foreign, US incl. 26 Lanc. u/un  
14.00 49 Book (350 photos) "Eastern Lanc. County incl. Terre Hill, New Holland, etc."  
4.00 50 10 Lanc. = McFalls Ferry, Rocky Springs, etc. u/un  
2.00 51 12 Easter children, chickens u/un  
4.00 52 10 Advertising u/un  
5.00 53 10 Birthday greetings u/un  
3.50 54 7 Cats, puppies dressed as people, un\*  
7.50 55 5 Alfred Mainzer cats un  
4.00 56 6 York views, 5 Willow Grove u/un  
75 57 10 Valley Forge un  
3.50 58 8 PA Turnpike linens u/un  
6.00 59 5 Lititz area u/un



Auction #8 continues on page 2....