

The Card

PUBLISHED BY THE LANCASTER
COUNTY POSTCARD CLUB, LANC. PA

Yearly membership is \$7 (plus \$3 per person,
same address) Mail articles and correspond-
ence to: P.O. Box 300, Lititz PA 17543-0300.

3rd Monday each Month

Faith United
Church of Christ
1204 Wabank Street
Lancaster PA

November 1992

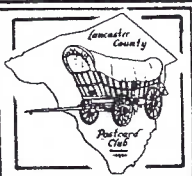
Vol. 3 No. 11

NEXT MEETING

Monday 7 pm

November 16, 1992

Buy/sell 6 pm



PROGRAM

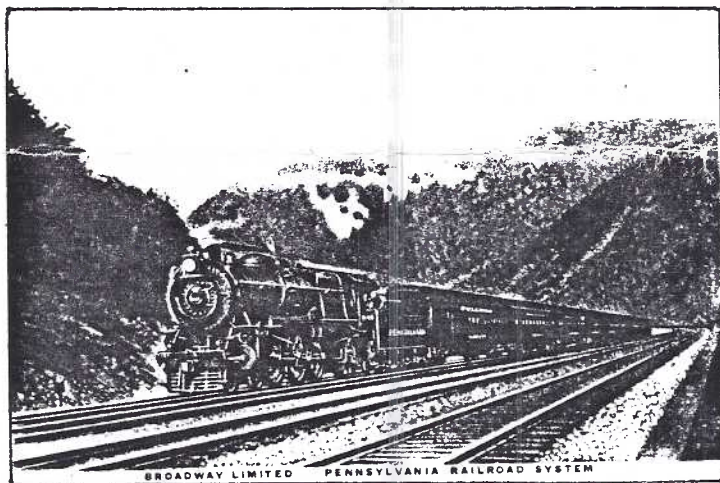
PENNSYLVANIA RAILROAD POSTCARD and CALENDAR
ART with EMPHASIS on ARTIST GRIF TELLER

Kenneth Murry of Mountville, a friend of
member #48, Bill Seigford, will be guest
speaker with PRR slides and actual artwork.
Some of the paintings have been made into
PCs. (The paintings are all works of Grif
Teller.)

Bill will have a few slides to sup-
plement Ken's presentation plus some slides
of PRR postcards done by other lesser known
artists.

Ken is an artist himself and a profes-
sional photographer. He has been employed
as a photographer for many years at Arm-
strong World Industries. He is also a PRR
history buff since high school days.

If you have local railroad postcards or
questions to ask - THIS IS YOUR NIGHT!



Reverse side caption reads:

The **Broadway Limited** is America's foremost
train. It makes the daily run over the PRR
System between New York and Chicago in 20
hours; Phila. and Chicago in 18½ hrs.

Nov. attendance: 50 + 3 guests.

THE NEW JERUSALEM



An undivided back (pre 1902 in Eng.) card
by The Cynicus Publ. Co., Tayport, Fife. The
Parliament buildings could well be our Cap-
itol building in Washington, D.C. The repre-
sentative is shedding his Conscience. He has
already abandoned 'Honour, such as it is', his
'Principles, such as they are' and ... 'every
scruple' lies by the roadside.

CYNICUS

Martin Anderson was a Scotsman born in
1854. His pseudonym 'Cynicus' (see signature
on illustrated PC) describes him precisely.
Webster defines a cynic as 'one who attri-
butes all actions to selfish motives'.

Through his powerful caricatures in the
news media and later on postcards, Cynicus
was able to portray his feelings of English
life through a brilliant combination of cyn-
ical wit and satirical art.

In the future we will share more PCs of
his urban life, love, politics and religion.



SORRY and THANK YOU

The third class October CARD met with
competition from heavy political mail. Our
apology to those who received it late.

A BIG LCPC THANKS to **Charlie Griffiths**
for contributing the 'freebie' PC enclosed
and to **Norm Zimmerman** for donating towards
postage for this mailing.

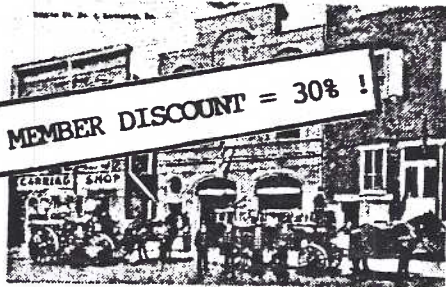
FI-FIE-FOE-FUM!
**This Is
 The Giant
 Of All
 Postcard Shows**
**YORK INTERNATIONAL
 POSTCARD FAIR**
 at the
HISTORIC YORK FAIRGROUNDS
 York, Pennsylvania 1992
Friday, November 20
 9 am to 7 pm
Saturday, November 21
 9 am to 5 pm

A Premier Postcard Show featuring over 100 tables of leading dealers from around the world. A show designed for your enjoyment in a huge, well-lighted building. Good food available in show room - abundant free parking.

Admission only \$2.00 one day - \$3.00 two days

Bourse Chairman is:
MARY L. MARTIN
 4899 Pulaski Hwy; Rt. 40 - Perryville, MD 21903
 Office: (410) 575-7768

FIRE ENGINES



LCPC MEMBER DISCOUNT = 30% !

These are the only known postcards of Lancaster Pa. Fire Houses. The b/w unused cards are the small remaining stock of the photographer. The photos were taken between 1914 and 1918 as the Lancaster Fire Dept. was converting its horsedrawn fire apparatus to motorized vehicles. Companies #2 and #4 were still horsedrawn when the postcard series was produced. Pub. by Kropp, Aug. 23, 1918.

Co. No. 1 - 2 engines*	Co. No. 4 - 2 horse teams*
Co. No. 2 - 2 horse teams	Co. No. 5 - 2 engines, chief's car*
Co. No. 3 - 2 engines*	Truck Co. A - hook and ladder*

The 4 different motorized vehicles (1, 3, 5, A) = \$40 plus \$2 p/h.
 Company No. 4 (horse-drawn teams) = \$20 plus \$2 p/h.
 SHORT SET ("s") (#1, 3, 4, 5, A) \$55 plus \$2 postage and handling
 COMPLETE SET (#1, 2, 3, 4, 5, A) \$150 post paid (Most of Co. 2 cards were destroyed because of water damage.) Co. 2 available only in complete set.

VERY LIMITED SUPPLY

U.S. Postal Money Orders filled same day. Checks must clear.

JIM WARD
 P.O. Box 300, Lititz, PA 17543-0300
 FREE biog. of the publ. with orders over \$20.

CITY WATER WORKS R.R. BRIDGE

Over two dozen published postcards and a handful of real photo PCs represent the extremely popular landmark we know as 'the railroad bridge' at Lancaster's eastern border. In 1888 this mammoth 5-arch structure replaced an old wrought-iron truss bridge that had carried trains for over 40 years. With consolidation of several lines it fell upon the newly formed PRR (Pennsylvania RR) to provide a more secure crossing over the Conestoga River.

Everyone of these postcards looks upstream and many show the old City Water Works through an arch.

It is on this downstream side of the RR bridge that some cards show prominent stones protruding in an alternate pattern. This 'south' side was left unfinished so new stone work could be attached in the event additional tracks were necessary. Widening the bridge was never needed and so their use was relegated to providing generations of Lancaster boys various heights from which to jump into the stream on hot summer days.

On 'published' (non real photo) PCs we've examined, these are the **different** scenes:

Passenger train going west (left)
 Freight train going west, night view
 Freight train going east and foot bridge
 No trains-

4-card multi-view (one of RR bridge)
 Man standing on bridge bed
 With and without foot bridge
 Night views (all artist altered)

One real photo PC (not illus.) shows a freight train moving west.

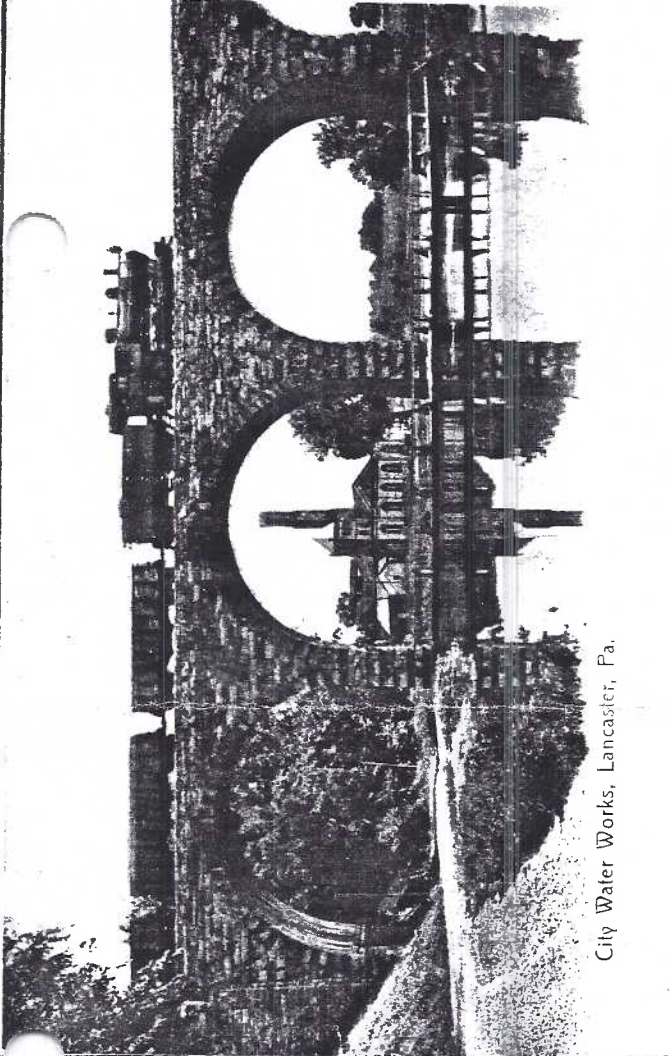
An unanswered question: when did the foot bridge exist? Cancelled dates on PCs with it range from 10/9/06 to 7/24/07; without it from 7/7/05 to 2/4/07. All of which is inconclusive. The Lanc. Co. Historical Society has a dated photo (1895) without it.

FUTURE PC SHOWS



BALTIMORE, MD. Nov. 15. Pikesville Armory.
 10-5. No. info. on adm. or dealers.
YORK Nov. 20-21. York Fairgrounds. 9-7 and
 9-5. \$2 adm. \$3/2 days. 100 dealers
LANCASTER Nov. 27-28. Farm & Home Ctr.,
 \$1.25 adm. w/adv. card
TOWSON, MD. Dec. 19. Quality Inn on York Rd.
 10-4. Free adm. door prizes, bargain boxes!

Editor Jim Ward Staff Charles Griffiths
 Artist Jim Rudisill Correspondence to P.O.
 Box 300, Lititz, PA. 17543-0300. Phone 626-
 4660. Letters, postcard stories, pictures and
 related articles are encouraged.



City Water Works, Lancaster, Pa.

Rotograph PC 2686a divided back, with freight train traveling east, footbridge in foreground, old City Water Works in rear.

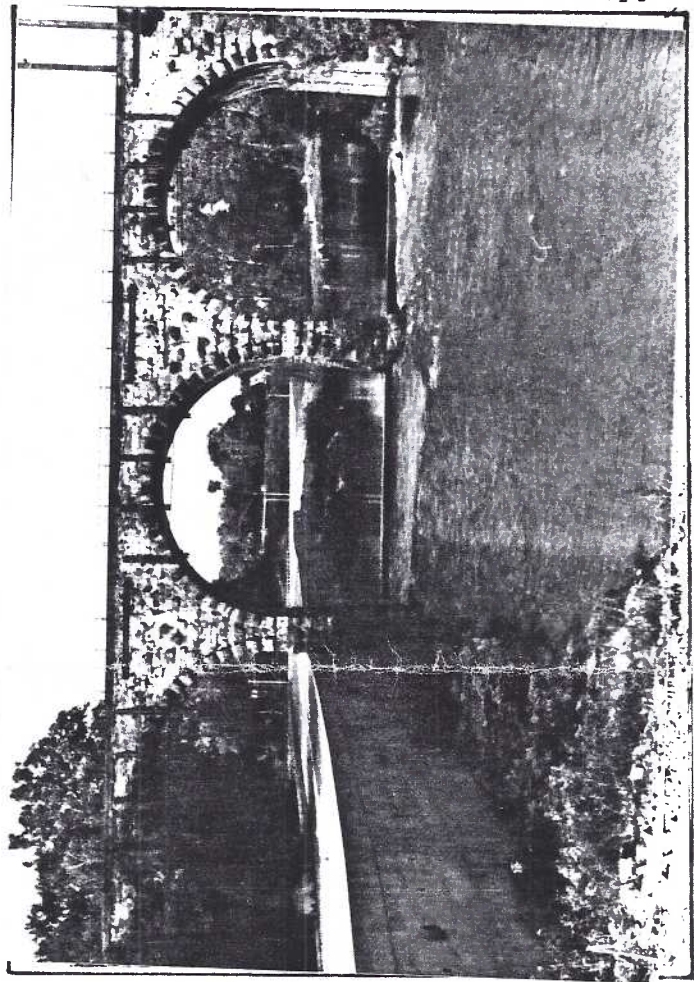
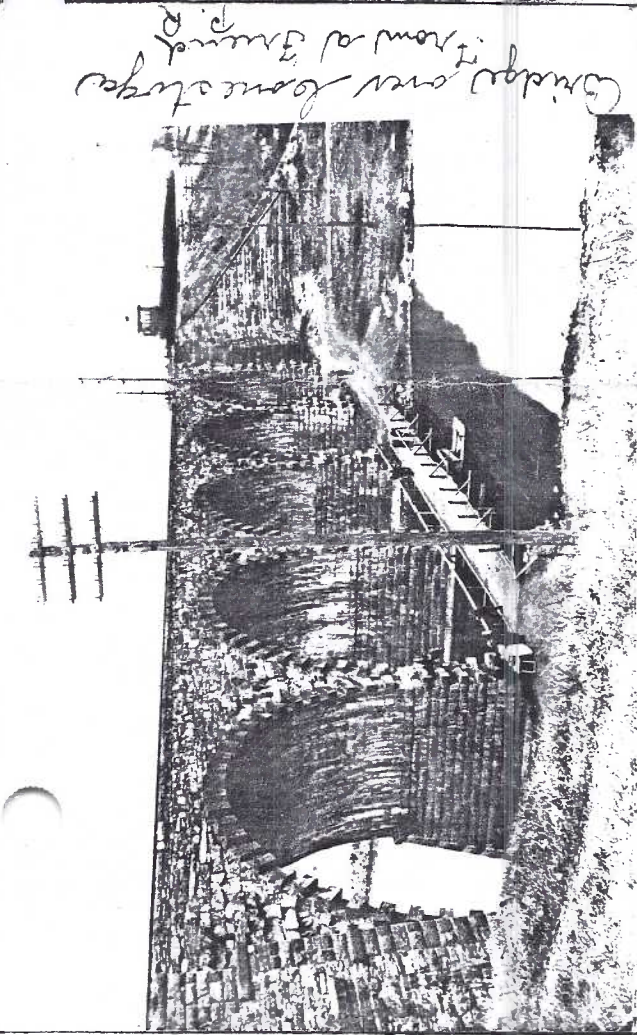
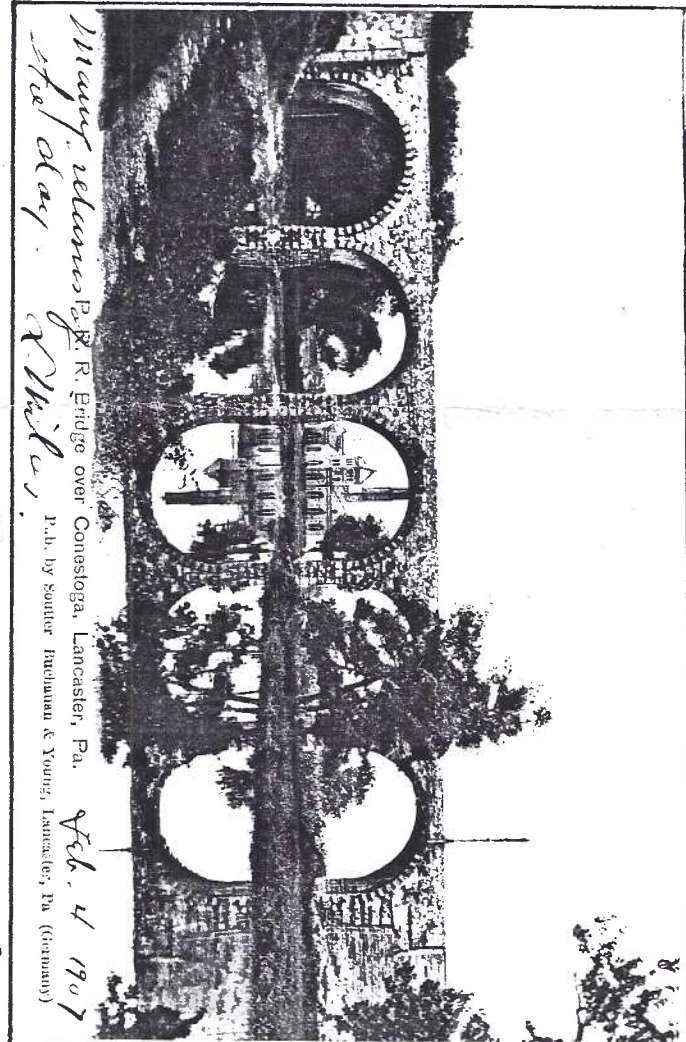


Photo taken Oct. '92 shows new extension of East Chestnut St. over old Grofftown Rd. (through western-most arch) then sweeping on toward new northeastern by-pass.



Real Photo PC by Lanc. Photo Supply Co., cancelled 12/4/06, shows RR control tower, footbridge and articulated stonework on south side with man sitting on one section above linen-draped table and several on-lookers.



Many believe P.R.R. Bridge over Conestoga, Lancaster, Pa. Feb. 4 1907
Pub. by Soutter Buchanan & Young, Lancaster, Pa. (Germany)

Undivided back PC by Soutter, Buchanan & Young (Lanc. publishers) shows all five arches of 1888 PRK bridge. Reflection is so clear, you're looking at this postcard upside down!

RAILROAD BRIDGE at the WATER WORKS

Published postcards

Compiled by Chas. W. Griffiths with contributed info. from Gerald Hostetter, Howard Steinberg and Jim Ward. Additions are invited.

Printer: Alberttype
Publ.: H. S. Williamson
No. 1 H City Water Works

Printer: Curt Teich & Co.

Publ.: Various not recorded
252-1568 H Penn R. R. Bridge, IP Showing Water Works Bridge
14371 H Pennsylvania R. R. Bridge over Conestoga Creek
25081 H P. R. R. Bridge and Water Works
44636 H Penna. R. R. Bridge over Conestoga River

Printer: Unknown

Publ.: A. W. Deibler
H Souvenir of IP

---a multi-view (4) card, one view being
Pennsylvania Railroad Bridge

Printer: L. J. Herr Print

Publ.: None indicated (probably the same)
H Penn's Railroad Bridge and Water Works
H Penn's Railroad Bridge and Water Works
H Penn's R. R. Bridge and Water Works
H Penn's R. R. Bridge and Water Works

Printer: Unknown

Publ.: Hubley & Herr
H P. R. R. Bridge over Conestoga River near Lancaster

Printer: Illustrated Post Card Co. (?)

Publ.: None indicated
1240-24 H Bridge over Conestoga River at Water Works

Printer: S. Langsdorf & Co.

Publ.: None indicated
E7657 H Penna. R. R. Bridge, IP Showing Water Works B---
Publ.: F. W. Woolworth & Co.
37657 H Penna. R. R. Bridge, IP Showing Water Works B---

Printer: The Leighton & Valentine Co.

Publ.: The Leighton & Valentine Co., Ltd.
The Valentine-Souvenir Co.

---- for I. Steinfeldt (S) logo in lower left corner
Publ.: None indicated, or Steinfeldt
403245 H Railroad Bridge and Water Works

Printer: The Photograph Co.

Publ.: None indicated
26866 H City Water Works
Publ.: Souther, Buchanan & Young
51280 H P. R. R. Bridge over Conestoga

Printer: Fleischer Bros., Inc.

Publ.: Fleischer Bros., News Agency
133855 H Penna. Railroad Bridge over Conestoga River

Printer: Unknown

Publ.: W. H. Townsend
H Souvenir of IP
---- 4 small views, incl.:- Pennsylvania Railroad Bridge

Printer: Unknown

Publ.: None indicated (dark sepia cards with numbers)
5408 H Penna. R. R. Bridge over Conestoga near IP

Printer: Unknown (undivided back, "Post Card" in thick black odd

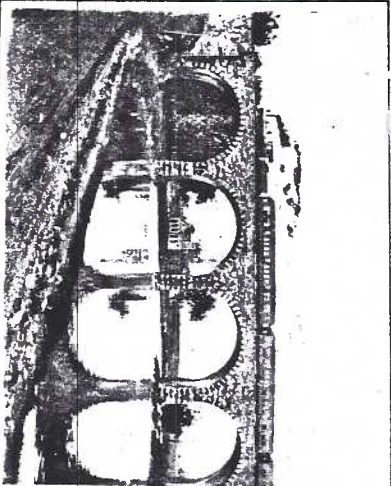
angular letters)
Publ.: Souther, Buchanan & Young
H P. R. R. Bridge over Conestoga

Publ.: Watt & Shand
H Railroad Bridge & Water Works

Printer: Unknown ("Post Card" in thick black letters with large black

Publ.: None indicated
H High Bridge & Water Works

Real photo cards exist. None have been seen with an inscription on them.



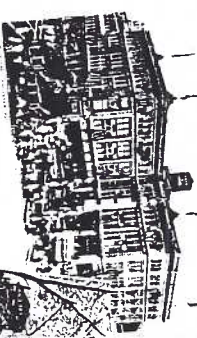
P.R.R. Bridge
over Conestoga River
Near Lancaster, Pa.
Hubley & Herr undivided back PC
Lancaster, Pa.

Thomas J. Spaulding

This Hubley & Herr undivided back PC shows a passenger train traveling west over the Penna. Railroad Bridge at the Lancaster City Water Works. Cancellation is January 6, 1905.

1993 POSTCARD CALENDAR

featuring reproductions of old postcards
LANCASTER CITY &
LANCASTER COUNTY, PA



14 MONTHS:
NOV. 1992
DEC. 1992

sponsored by the
LANCASTER COUNTY
POSTCARD CLUB
meetings: 1st Monday ex. month
Faith United Church of Christ
1204 Webbs Rd., Lancaster, PA
PH 717-391-5111

62
OLD
POST
CARD
SCENES

Mike's
Calendar of Lancaster County History

Our #2 Lancaster City & County Calendar is hot off the press 62 more and different local postcard scenes. Still \$5 each, \$6.50 by mail. A few 1992 calendars (#1) are still available at the same price. From: P.O. Box 300, Lititz PA 17543-0300.

SOPHISTICATED LEAP YEAR LADIES

It's the eleventh hour for LEAP YEAR AMBITIONS but perhaps these beautiful girls in pursuit will be someone's inspiration.



This 'set' of twelve LEAP YEAR cards would be enhanced greatly by a bit more color (only the heart and common caption "LEAP YEAR THOUGHTS") are in red.

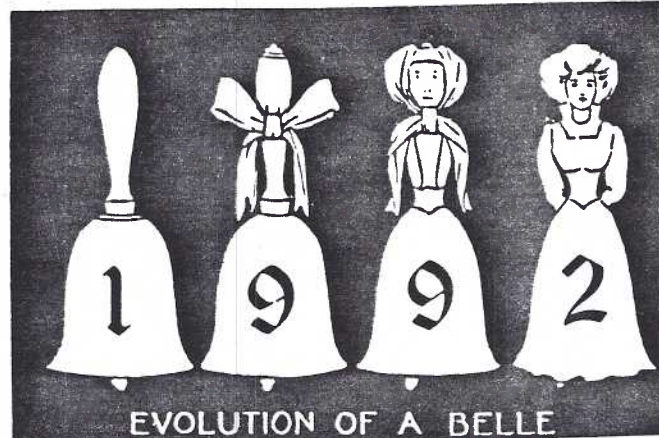
The sophisticated ladies are beautifully signed 'Etching by G.Reiter Brill'.

The 'set' is by The Rose Company and un-numbered (numbers for illustrations only.)

These 8 captions are interchanged among 12 diff. illustrations we've seen so far.

- 1) Do you want a good girl and want her bad?
- 2) Do you want a minister who can tie a slip knot?
- 3) I'll get you yet.
- 4) I propose to change my name.
- 5) It's fashionable for girls to propose.
- 6) Let's put another R in Mary.
- 7) My (in tenths) love has finally overcome my Xstream bashfulness. Will you be mine?
- 8) Will I be yours?

Do you like the holes in our CARD? They help make it a 'keeper'.



This last-minute reminder is an adaptation by Member #182, Eden "Dee" Delcher. Its origin: an unidentified 1908 Leap Year PC.



A LITTLE PUZZLE FUN FROM THE STAFF

(and you may learn something, too!)

Write answer to each CLUE on blank line. Answers come from WORD LIST. First letter in each ANSWER forms a hidden message.

WORD LIST

Yak
View
Trolleys
St. Louis
Rebus
Private
Postal
Panama Canal
Old Home Week
Novelty
Nimble Nicks
Months
Little
King
Installments
Independence Day
Harvey
Hallowe'en
Guardian Angels
Gruss Aus
Fisher
Continental
Columbians
Asti
April Fools Day

CLUES (all postcard related)

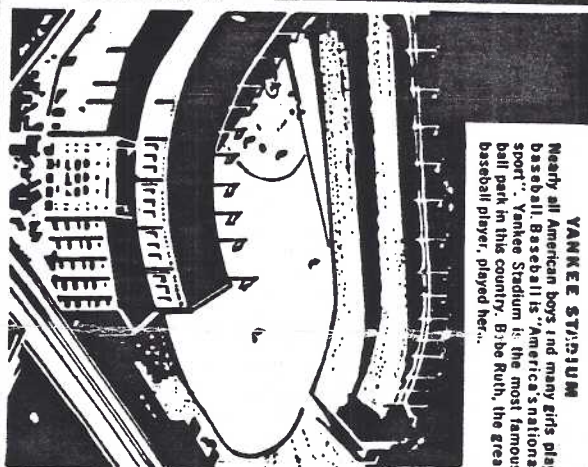
Popular holiday
Signed artist of buxom women
Card issued by federal govt.
_____ M C (type of early card)
Popular zoo animal
Transportation
Fred _____ issued Westerns
Originally a Fr. holiday
Metal add-ons
Famous for early seashore girls
1904 Exposition
"Greetings From" in Germany
Need several to complete greeting
Not a greeting
Bang-up holiday
Snow babies
Winged protectors
Popular artist of lovers
Picture puzzle
Local history
Long sunbonnet set
Tuck's _____ Nemo
First Am. picture PC - 1893
Popular C.A. topical
Larger than standard size

ANSWERS

This image shows a single sheet of white paper with horizontal blue or grey ruling lines. The lines are evenly spaced and run across the width of the page. On the left side, there is a vertical margin line, creating a narrow left margin. The paper appears to be from a notebook or a standard ruled document. There is no handwriting or printed text on the page.

(Answers elsewhere)

Paid Adv.



COMPLIMENTS KELLOGG'S CORN FLAKES - PRODUCT OF A FREE COUNTRY

POSTCARD

**ASK
POST OFFICE
FOR AMOUNT
OF POSTAGE
REQUIRED**

Kellogg's Corn Flakes
Post Cards

WANTED

- *Cards of type illustrated.
- *Titles of cards of this type
for a check list.
- *Information about these cards
for future article.

Chas. Griffiths
15 Circle Rd.
Millersville, PA. 17551

THE SUBS TO IMPROVE VAND WARE AND WARE

Cut from the back of a cereal box.

NEW MEMBERS

#220 LINDA SELLERS 4211 Oregon Pk., Ephrata PA 17522. 859-3520. Ice cream, general int.

#221 PEG FREY same address, same interest.

#222 DIANE ALLMEN Modern Postcard Sales P.O. Box 644, Elkhart, IN. 46515. 219-2640013. Suffrage; Chicago pioneers; Century of Progress; Elkhart real photos.

#223 DAVE LONG partner in Modern Postcard Sales with Diane Allmen #222.

#224 TIMOTHY BUCKWALTER 35 Brosnan St., Apt. 8, San Francisco CA., 94103. Diners, misc.

#225 J. NEWLIN GROFF 3046 Charlestown Rd., Lanc. PA 17603. 872-5815. Manor Twp., Washington Boro, Safe Harbor, Millersville, Central Manor Park/Meeting Ground.

#226 J. RICHARD BISHOP 750 E. Hillcrest Rd., York, PA 17403. 854-4605. Glen Rock, Reading, Ephrata, PA.

#227 EDWARD N. HARRIS 185 Letort Rd., Millersville PA 17551. 872-7645 Lancaster Co., City

#228 ALMA EBY 912 W. Main St. (Suite 101) New Holland PA 17557. 656-6758. Holidays, general greetings, esp. w/ small children.

228-24=204 actual members!

Sign up your friends - have your husband or wife join us...remember OCT., NOV., DEC. 1992 included with their dues for 1993! \$7 per annum, \$3 ea. additional household member.



EXHIBITS



BIRTHDAYS brought out seven delightful exhibit boards in Oct.

The MOWERS FIRST Birthday Greetings

The MOYERS SECOND Birthstones

JIM WARD THIRD Children's Greetings

HONORABLE MENTION

DON DAVIS Birthdays are for the Birds

DON DAVIS 39 and Holding

The MOYERS Your Birthday

NORM ZIMMERMAN Geburtstage

Thanks, once more, to our exhibitors.

November's theme: **DISASTERS**

December's theme: **CHILDREN AT CHRISTMAS**

NOMINATING COMMITTEE REPORT

The Nomination Committee announced this slate of officers for 1993:

President

Don Davis

Vice President

Walt Mowrer

Secretary

Barb Mowrer

Treasurer

Harry Lines

Nominations will be accepted from the floor in Nov. or you may contact any of these Nom. Comm. members: Norm Zimmerman, Dede Schaeffer, Charles Griffiths.

Directors will also be nominated in Nov. Vice Pres. Davis hinted there may be more frequent Directors meetings in 1993.



MORLATTON POST CARD CLUB

Presents

A Thanksgiving Weekend Feast of Cards

Farm and Home Center

1383 Arcadia Road

Lancaster, PA

(717-392-4911)

(Farm and Home Center Lane)

Friday, November 27, 1992

10 A.M. to 6 P.M.

Saturday, November 28, 1992

10 A.M. to 5 P.M.

Admission \$1.50
(25¢ off with ad)

For more information call
M. W. Hall, Show Chairman, (803) 387-6065
Kay Feight, Show Secretary, (717) 263-1638

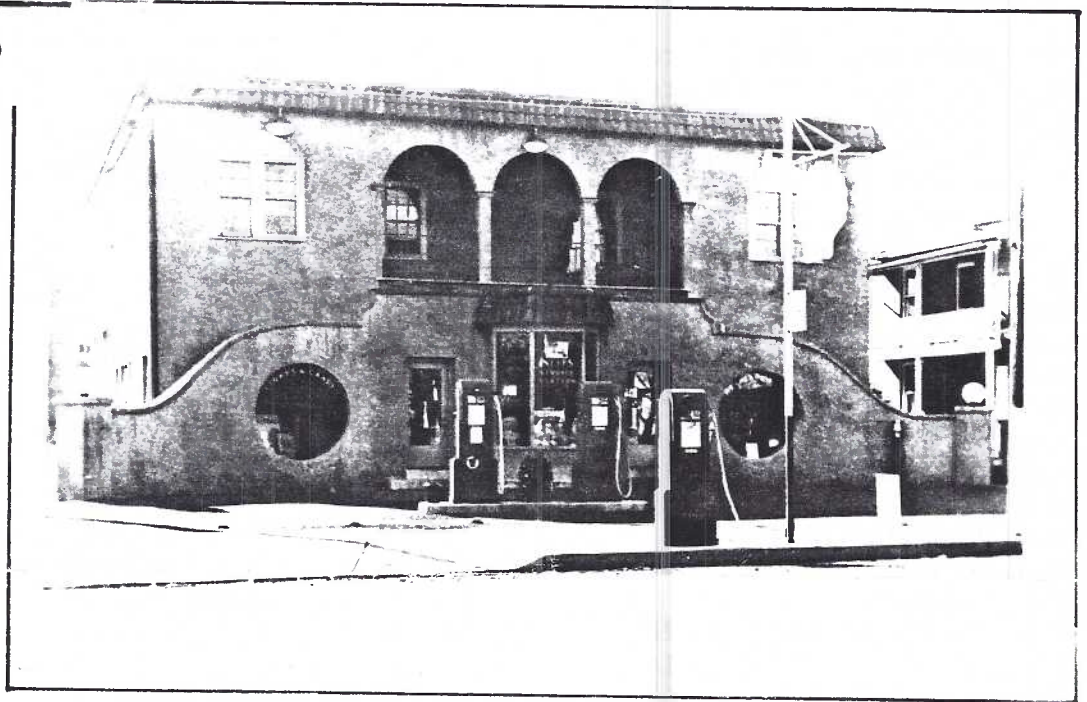


UNIDENTIFIED DEPARTMENT

Signs read:NEFF'S SERVICE
STATION,SHELL(gas),CIGARS
CANDY and ICE CREAM. Con-
tact **Howard Steinberg #14**
if you can help him.

PUZZLE ANSWERS

Installments
Gross Aus
St.Louis
King
Columbians
Little
Months
April Fools Day
Harvey
Rebus
Trojans
Yak
Private
Postal
Indians
Vilews
Guardian angels
Fishier
Old Home Wk.
Months
Little
Columbians
Panama Canal
Continental



It would appear we're 'giving you the bird'
by NOT giving you the BIRD this year in our
THANKSGIVING treat....hope you relish these
Lancaster County 'vegetables'.
#800 series,divided back PCs, F.A.Owen. Co.

We're tripping the light fantastic too
Our growing days are over
No more well nod and beckon
To our neighbor fields of clover.
But at the festive table,
Spread for Thanksgiving Day
Mid sauce and soups and seasoning,
Our smiles shall fade away.



808

LCPC APPROVES FIRST SHOW

Chrm. Jim Ward received a
vote to proceed with work
for our FIRST PC SHOW -
Sat.,Aug. 21,1993, Farm
& Home Center,Lanc. His
primary help will be:Jere
Greider Publicity ;Jose
Rodriguez Dealers;Charles
Griffiths Exhibits;Gerald
Hostetter Physical Plant.
YOUR HELP IS REQUESTED.

AUCTION ACTION



Gross sale \$536.50 LCPC Comm. \$53.65
+ E.Heller donation \$9=\$62.65 NET TO LCPC

Lot #	price	23	1.50	45	14	66	2
1	1.50	24	.50	46	5	67	3.50
2	1	25	1.50	47	6	68	1
3	2	25A	1	48	23	69	70 4
4	2.50	26	2.50	49	9	71	2.50
5	2	27	11	50	20	72	7
6	3.50	28	22.50	51	6	73	76 2
7	1.50	29	1	52	9	77	79 --
8	9 1	30	6	53	22.50	80	5
10	1	31	9	54	5	81	.50
11	1	32	14	55	10	82	9.50
12	1	33	7	56	6	83	10
13	1	34	35 7	57	8	84	10
14	--	36	38 2.50	58	15	85	1
15	4.50	39	1.50	59	6	86	1.50
16	--	40	2	60	7	87	16
17	1	41	1	61	45	88	2
18	19 2.50	42	11	62	85	89	1
20	1	43	4	63	64 3	90	9

THANKS to:Darvin,Walt,Jere,Barb. Don.9
Space is limited this time.Sorry.

We come from the Vegetable Kingdom
With greetings for Thanksgiving Day
Should you invite us to
dinner,
We may feel obliged to stay.



810