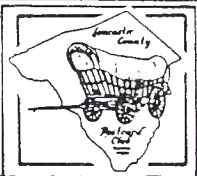


The Card

PUBLISHED BY THE LANCASTER
COUNTY POSTCARD CLUB, LANC. PA



Yearly membership is \$7 (plus \$3 per person, same address) Mail articles and correspondence to: P.O. Box 300, Lititz PA 17543-0300.
Advertising: \$15 full page, \$8 ½ pg, \$5 ¼ pg.

3rd Monday each Month

Faith United
Church of Christ
1204 Wabank Street
Lancaster PA

December 1992
Vol. 3 No. 12
NEXT MEETING
Monday 6 pm
December 21, 1992
We eat at 6:30!

OUR THIRD BIG CHRISTMAS PARTY!

This gala event concludes our THIRD YEAR!
SCHEDULE OF EVENTS

6:30 Covered Dish Supper (Main course of BBQ plus drinks provided by club) Families of members are definitely invited...just bring plenty of food!

7:30 Exhibit Board Display **CHRISTMAS KIDS**

7:50 Vote for Officers of 1993

7:52 Miscellaneous Awards - surprises for a couple dozen members.

8:00 "Pretzels on Christmas Postcards"

8:18 Questions and answers on above

8:20 Christmas Postcard Exchange (as Pres. Dot said, "If you don't bring one - you don't get one!" Sign it!

8:30 **Kristkindli Vendu** (PA. Dutch for Christmas Present Sale, according to Dutchy D. Fry) Hand-made crafts, antiques, 'little nicies' This was the highlight of last year's Party esp. with Howard Steinberg leading us thru a fast-paced and very funny sale with LCPC netting over \$175! Be sure sale items are **UNWRAPPED** so we know what we're bidding on! NOTE. no member sales tables tonight.

SNOW DATE - in event of bad weather, entire Christmas Party plans are postponed to regular JANUARY MEETING plus #3 birthday cake!

Our Christmas Parties are always informal and lots of fun If you haven't been to one you're missing a great part of LCPC.

PROGRAM

December's program will be 98% entertainment Jim Ward promises and he will hold it to 18 minutes. It is **PRETZELS on CHRISTMAS POSTCARDS**. (See this month's 'generic' article.) Sit back and enjoy it. There will be no test following this slide program.



This great German silhouette PC is by an unknown publisher. But we do know the artist liked pretzels - enough to include two in his scene. See **Christmas** article inside!

NOMINEES FOR 1993

President	DON DAVIS	872-8630
Vice President	WALTER MOWRER	684-5331
Secretary	BARBARA MOWRER	684-5331
Treasurer	HARRY LINES	569-2080

Directors for 1993-94

HAROLD MOYER	1-215-267-6644
LEONA RINEER	394-9384
HAROLD RINEER	394-9384

The above will be voted upon in December.

DIRECTORS completing 1992-93 terms:

GERALD HOSTETTER	653-4505
ROBERT KRAMER	684-4210
PAUL WEIDMAN	898-7313

NEW MEMBERS

#229 **F.W. JENESKI** 357 S. Morningsun, Mill Valley, CA. 94941. 1-415-388-7050. Collects Detroit Publ. Co. Sells PCs on approval. Send him your list of wants.

#230 **CHARLES THURMAN** 2849 Cairo Rd., Paducah KY., 42001. Collects Paducah and W. Kentucky.

#231 **MIRIAM M. KENEAGY** 15 Leacock Rd., Box 22, Paradise, PA. 17562. 687-6615 General interest

#232 **VALERIE REFI** (ra-fee) 2190 W. Main St., Ephrata, PA, 17522. 738-3807. Art on PCs and Somerset, PA. and Cambria County PA.

#233 **KATIE STEHMAN** 134 Fairview Ave., Bausman, PA 17504. 394-6488. Animals and humorous PCs (comics).

233-24=209 actual members!

For a POSTCARD CLUB which will be only 3 years old in January 1993 - WUNDERBAR!

FINE ATTENDANCE

61 members at our Nov. meeting + 13 guests of whom three became new members! GREAT!



CHRISTMAS CARDS WITH A TWIST

"Start another category?" the dealer said, when she heard someone collected PRETZELS ON POSTCARDS. "You must be kidding!"

But if you like PRETZELS, they're out there for the finding. And they are found in many places. Here we'll consider **PRETZELS on CHRISTMAS POSTCARDS**. These are quite easy to find. Why?

Because PRETZELS are of European origin and very probably Germanic. As we all know, many postcards are of German origin. Monks would reward children for learning their prayers by giving them a pretzel. The Latin *pretiola* means "small reward". The pretzel showed little children how to cross their arms when in prayer. Stand before a mirror. Cross your arms with hands on ~~your~~ shoulders. You've formed the pretzel shape!

So 'real' pretzels and pretzel-shaped cookies are found on many Christmas PCs.

A FEW STATISTICS

After two years of looking, I have a collection of 333 different postcards with PRETZELS (plus variations: coloring, captions etc.) 58% are HOLIDAYS of which 96%(186) are **CHRISTMAS**.

Primary subjects on Christmas postcards:

CHILDREN	- 69 postcards	(37%)
ANGELS	- 49	" (26%)
TREES, etc.	28	" (15%)
SANTA	- 25	" (14%)
ELVES	- 8	" (4%)
ADULTS	- 4	" (2%)
SACRED	- 3	" (2%)

PRETZELS on CHRISTMAS postcards are on Koehler Hold-to-lights, studio real photos, a pop-up (w/wax candles), fantasy and an installment; embossed, applied silk, gelatins and on delightful modern (1980) German PCs. There are at least 18 PFBs; these signed artists have been seen: Brundage, Curt Nystrom, and Aina Stenberg. Superb cards exist by M. Munk, Theo. Stroefer and Meissner and Buch.

Gingerbread houses, children with pets playing indoors and out and a great variety of toys are found with CHRISTMAS PRETZELS.

If you collect any of these categories, check your collection - you may have a few twisted delicacies and not know it!

So for a new twist in collecting, try a few pretzels...oh, yes, the other 147 postcards with PRETZELS? That's another story!

Jim Ward



PROEHLICHE
WEIHNACHT.

from
Stella & Ike



A gorgeous Meissner & Buch PC, Series 1205, cancelled Dec. 10, 1904, Strassburg, Germany. "Joyous Christmas from Stella & Ike" to Miss Marie Kahn, Avondale, Cincinnati, Ohio, USA.

MEMBERS CONTRIBUTE TO LOCAL HISTORY

Just released is a fine volume **Lebanon County: A postcard History**. Its 204 pages contain 850 old postcard scenes (95% are old real photo PCs). LCPC members contributing are **Nancy Gambler** (over 200 items), **Harvey Bomberger**, **Morris Greiner** and **Donald Brown** (who also co-authored the narrative).

The edition is limited to 5,000 copies. \$17.50 soft cover and \$30 hard cover. The Lebanon Co. Historical Society sells them.

A similar goal for Lancaster could be accomplished by committees from our club.

THE CARD STAFF

Editor Jim Ward Columnist Charles Griffiths
Artist Jim Rudisill Correspondence to:
P.O. Box 300, Lititz, PA 17543-0300.
Indexes for back issues of **The CARD**
1990, 1991, 1992 - 50¢ each
Complete years incl. Index - \$6 each



Four nissen (elves) on this signed Curt Nyström represent a small group of Christmas/pretzel PCs. Publ. by Axel Eliasson, Stockholm.



From Koehler PC Co. we see a long-robed Santa offer the children a gingerbread man. Undivided back and unused.



Beautifully drawn children give a pretzel a diff. twist on this German Am. Novelty PC. Art Series #623. Un/bk cancelled 12/28/08.



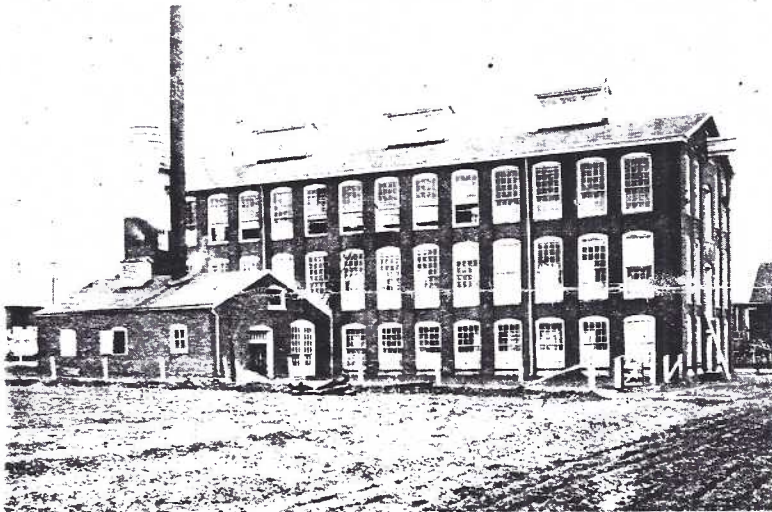
Christmas angel and tree adorned with customary ornaments incl. a pretzel"...from your school mate, Fleeta Kinnaman" German publisher

BUCHER THAL / UNION STATION / DENVER



Hans Bucher with sons Isaac, John and Benedict("Bence")and their families,settled **Bucher Thal**(Bucher Valley)in 1735.Their 325 acres, along with other settlers' land was called by this name for 130 years.

Irrigating their rich meadows, building impressive mills and mining with discretion, these diligent Swiss Mennonites provided an attractive settlement in the Upper Cocalico Valley.



SILK MILL, DENVER, PA.

From a farming community,Denver grew in to a sizeable cigar manufacturer.After 1900 labor-saving machinery cut out many jobs of hand-rolling cigars. Its advantageous location along a railroad 'saved the town' as several large industries absorbed the job market.

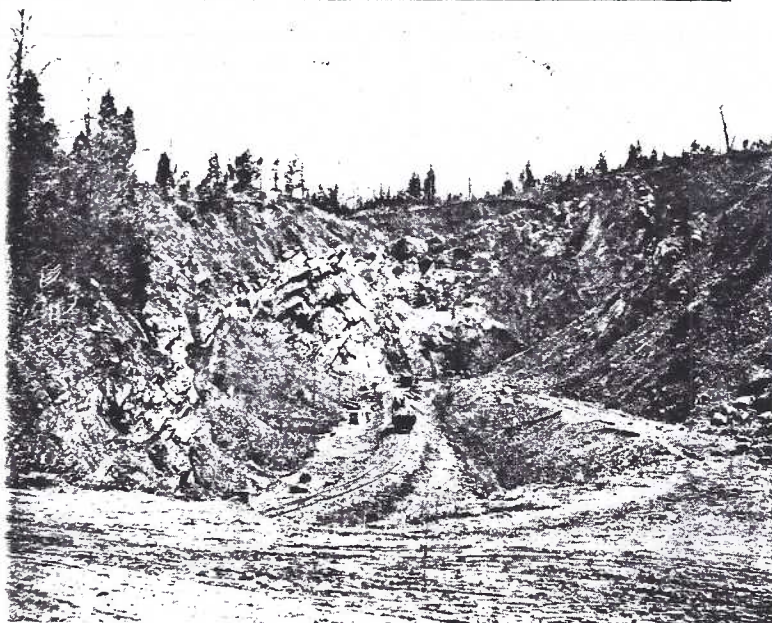
The Westerhoff-Napier Co. built a huge mill at Walnut and Second Sts.Satin taffeta and crepe de chine in 1901 were followed with WWI Navy neckerchiefs then WWII parachutes. Textiles are still produced there!

Few towns in our county can attribute so much of their prosperity to the RR as can Denver. Perhaps its a fact that the initial purpose was to provide easy access to Ephrata's Mountain Springs Hotel, but you can well believe the citizenry of the Bucher Thal would apply its existence to more resourceful uses.

We see on this postcard the enlarged Phila. - Reading Depot with passengers and freight waiting to be carried north towards Reading. Town Square is west of the RR by one block, but the center of activity was certainly here.The tracks were completed in 1863 for this community - **Union Station**.



P. & R. DEPOT, DENVER, PA.

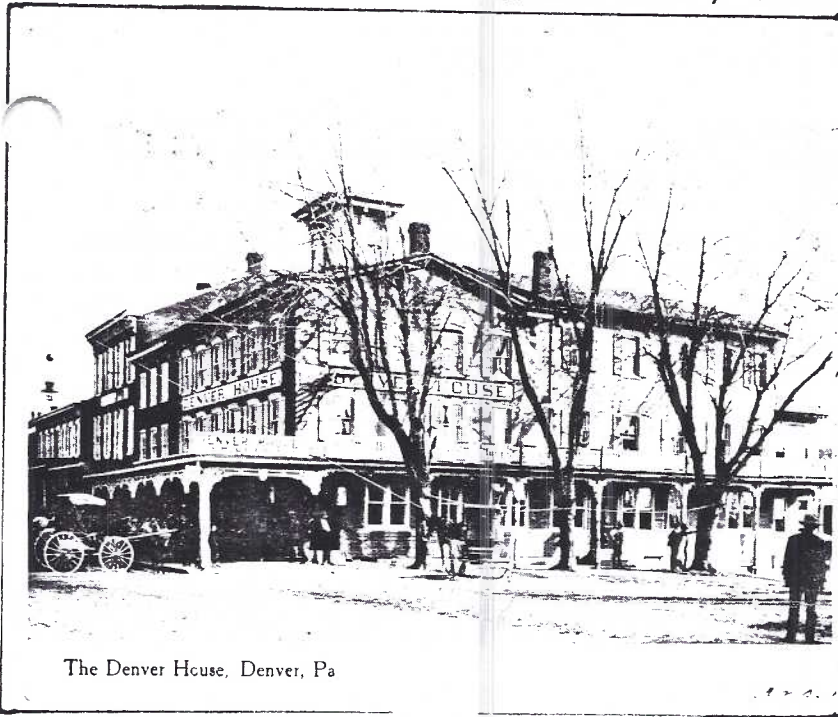


LIMESTONE QUARRY, DENVER, PA.

Hans Bucher and other early settlers named a nearby mountain -bare of trees and shrubs **kahl kupp** (bald head).From the earliest days substantial stone houses and chimneys were constructed from its limestone.

First wood then coal kilns burned the stone and the resultant 'conditioner' lime and powdered fertilizer lime became reknown throughout the region. Teenage boys were employed as 'rock catchers' in the 1890's at men's wages - 15¢ an hour. Its estimated the Kahl Kupp quarry produced one quarter million tons of stone by 1900.

On the Reinholds road you still cross a bridge over the cut in which a RR mine shifter pulled cars on tracks to the depot It was operated by the last owner, the Reading Iron Company.



The Denver House, Denver, Pa

The Denver House - first building in the new 'community' around the RR depot was first called Union Hotel by Samuel Miller. Until a tornado-like storm blew the cupola onto the church across the street in 1955, you could see Reamstown from this vantage point. It is still in operation as a hotel.

Stober's restaurant, residences, Miller's store and hotel, coal and lumber businesses followed. The 1868 store progressed through 'sweetwood' suckers-you could chew the stick patent drugs and finally potbellied stoves (in the hardware store). To accomodate you postcarders who like to 'spot' PC scenes at present locations, be advised that in 1928 Union St. became Main, Garfield is now 4th. ED.NOTE: A photographer who titled two real photo PCs (AZO triangles, 1918-30) calls both MAIN ST. but still refers to GARFIELD on one card.

When the Reading and Columbia Railroad linked **Bucher Thal** to the outside world in 1863, events happened at a geometric rate. **Union Station** retained its popular Civil War name until the growing population tired of being known only as a railroad depot. (Uniontown, Unionville, Uniondale and Union Deposit had already been chosen.)

Andso in 1881, by contest, 19 year old Adam Brubaker's offering of **Denver** was selected because it was 'short, expressive and euphonious' and there was only one other - in Colorado.



The Palace Theater (labeled as Palace of Sweets on a PC w/Denver Natl. Bank) brought a variety of social life to the town in 1911. Motion pictures (the 'silents' with local pianists), medicine shows, amateur contests, spelling bees, plays, speeches and holiday programs played to a packed house (300 seats). But even Chautauqua shows couldn't keep the Palace alive once automobiles became common modes of transportation in the 1930's. Today the site is occupied by a drive-in branch of the Denver National Bank. Note the Denver House beyond the RR depot. View looks eastward. AZO back.

Charlie Griffiths and Jim Ward wish to express their gratitude to members **Harold and Ruth Moyer** for their time and considerable knowledge of Denver. They made a dreary day bright with anecdotes and recollections of an area in which they've both lived all their lives. **Ruth** was a most patient driver, **Harold**, a genuine historian.

All of the 'printed' PCs in this article are full size. Their rt. hand l" borders are omitted for economy of space.





Published postcards

Compiled by Chas. W. Griffiths

(THIRD IN A SERIES OF LANCASTER COUNTY TOWNS)

Printer: Unknown

Publ.: Silas E. Bard

H The Denver House, Denver (thick card) Illus.= illustrated in Denver story.

Publ.: Bill Bennett

V Ann Richards Gift Shop at Colonial Motor Lodge---Denver
 C-14350 H (Colonial Motor Lodge and Schrafft's---Denver) (side trees,
 C-20110 H (Colonial Motor Lodge and Schrafft's---Denver) (top trees,

Printer: Dexter Press

Publ.: James E. Hess

2391 H (America Wonderland---Denver)
 12239-B H (Colonial Motor Lodge---Denver)
 19975-B H (America Wonderland---Denver---19th Century Western Town---
 19976-B H (America Wonderland---Denver---Scene of County Fair---)
 19977-B H (America Wonderland---Denver---Early 20th Century Town---
 19978-B H (America Wonderland---Denver---Modern City---profile)
 19979-B H (America Wonderland---Denver---Modern City---frontal)
 19980-B H (America Wonderland---Denver---Modern City---sunset)
 21035-B H ("The Old Covered Bridge"---near Denver---)
 27788-B H (Colonial Motor Lodge & Schrafft's Restaurant, Denver---
 36497-B H (Zinn's Modern Diner---Denver---) (exterior)
 60057-C H (Zinn's Country Diner, Denver---) (exterior)
 80351-B H (Dutch Cousin Campsite - for family camping - Denver)
 89402-B H Pennsylvania Dutch Motel (Denver)

Publ.: F. A. Woerner

V (Amos Welcomes You to Zinn's Country Diner and Dutch---

Printer: Dukane Press

Publ.: Bill Bennett Studios

7678 H (Dutch Land Motel---Denver) (exterior and sign)

Publ.: Insilco

R27807 H (Colonial Motor Lodge-Denver) (exterior through woods)

Printer: Unknown

Publ.: Mel Horst Photography

89402-B H (Pennsylvania Dutch Motel, Denver)

Printer: Koppel

Publ.: Stel Mar

158844 H (Dutch Land Motel---Denver) (exterior and sign)

Printer: Merrimack

Publ.: None indicated

H Cocalico Creek, Denver
 H Cocalico Senior High School
 H Covered Bridge over Cocalico Creek, Denver
 H Main Street, Denver
 H Post Office, Denver

Printer: MWA

Publ.: Leroy Inc.

26102F H (Cedar Crest Motel, Denver)

Printer: Unknown

Publ.: National Press, Inc., North Chicago

H C & H Esso Servicenter - on U.S. Route 222 (Denver)

Printer: Harry S. Stick, Printer, Denver, Pa.

Publ.: Same as printer.

H Fairview Cemetery, Denver
 H Union Street, West of R. R., Denver
 (This card has "Post Card" in thick, shaded Letters.)

Printer: The Tecraft Company

Publ.: None indicated

H Borough Waterworks, Denver
 H Main Street, Denver
 H Public School, Denver
 H Saron House, Ephrata Cloisters, near Denver
 H St. John's Lutheran Church, Denver
 V Trinity Evangelical United Brethren Church, Denver
 H Union Station Meeting House, Denver
 H War Memorial, Denver

Listing format

- 1 - Printer or Manufacturer
- 2 - Publisher (for whom postcard was printed or manufactured)
- 3 - Inscription on card. Horizontal or Vertical.

If in (), on back of card.



Published postcards

Compiled by Chas. W. Griffiths

(THIRD IN A SERIES OF LANCASTER COUNTY TOWNS)

Printer: Tichnor Bros., Inc.

Publ.: Mellinger Studios

- 81890 H Zinn's Modern Diner---Denver
- 83158 H Zinn's Modern Diner---Denver
- 87039 H Colonial Motor Lodge---Denver
- 87497 H Dinger's Atlantic Service---Denver
- 87749 H Cloister Motel---Denver
- 87750 H Pennsylvania Dutch Motel---Denver (2 prtg.-1 w/AAA emblem)
- 90169 H Dutch Land Motel---Denver
- G85019 H Zinn's Modern Diner (Denver)

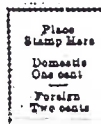
Printer: Unknown

Publ.: Bill Windham Aerial Photos---Ephrata, Pa.

H Colonial Motor Lodge (aerial view) Denver

Printer: Unknown *

Publ.: None indicated



POST CARD

They come both black and white and in colors. Very nice cards.

- H Cor. Union and Garfield Sts., Denver
- V Denver Fire Company No. 1
- H Denver House
- H Denver National Bank and Palace of Sweets
- H East Side South Union St., Denver
- H J. G. Burkholder's Coach Works & Implement Depot Denver
- H Limestone Quarry, Denver Illus.
- H Merchant's House, Denver
- H Miller's Hardware Store and South Union St., Denver
- H P. & R. Depot, Denver Illus.
- H Pott Bros'. Store South Union St., Denver
- H Public School Building, Denver
- V St. John's Luth. and Ref. Church, Denver
- H Silk Mill, Denver Illus.
- H Stober's Store, Cor Union and Garfield Sts., Denver
- H Stone Bridge, Denver
- H Stone Bridge, over Cocalico Creek, Denver
- H The Denver National Bank & Palace of Sweets
- H Trinity U. B. Church, Denver
- H Washington House, Denver
- H Waterfall, Cocalico Creek, Denver
- H West Side Railroad Square, Denver

Additions and/or corrections
should be sent to: CHARLES W.
GRIFFITHS, 15 Circle Road, Mil-
lersville, PA 17551.

Many Real Photos exist. Listed are those seen with an
inscription on the front (picture side)

Double-lined letters of "Post Card". Azo paper. Divided backs.

"Correspondence Here". "Name and Address Here".

- H High School Denver
- H Main Street So. of Garfield Denver
- H Main Street So. of R. R. Denver Illus.
- H St. Johns Reform and Ream Memorial Churches Denver
- H U. P. Church Denver Pa. No. 40.

Double-lined letters of "Post Card". Azo paper. Divided Back.

"Correspondence". "Address".

- H P. O., Bank and Walter Bldg. Denver (this card has a white border)

Double-lined letters of "Post Card". No stamp box. Divided back.

"Correspondence". "Address Only".

- H Fry's Service Station, Denver

* Same postcard back by this unknown printer:

- H M. P. Wenger's Store, Durlach
- H The Salisbury Township Central High School



POSTCARD FROM OUR PRESIDENT

Dear L.C.P.C.ers,

As someone of great renown said, "Parting is such sweet sorrow". The time has come for me to hand the gavel to Don Davis.

A hearty **Thank You** goes to all the faithful committee chairmen and their helpers and to the Board of Directors. Their cooperation oiled the wheels of club business.

The presidency's greatest asset was the chance to know all of you better and ferret out the sterling qualities that make you very special. A friendly comradery encourages interest and participation and all of you have exhibited both. Of course I had pets - what teacher doesn't. But whom you will never know!

1993 will be a busy year because many projects remain on our wish list and others already on the drawing board must be carried to fruition. May you accomplish wonders and keep growing and going...and going...and going!

Thanks for the memories,
Madam President, D. Fry.

AUCTION ACTION



Pres.-elect **Davis** would like to 'ease into his term' with the customary AUCTION in January, so give your POSTCARDS & AUCTION LIST to **Walt** or **Charlie** at the Christmas Party.

NOTE-Rumor has it the auctions may be cut back from four to three or two per year, so you better 'red out' before the Holidays!!

CLUB CALENDARS

Sales for the 1993 LANCASTER CITY-COUNTY POSTCARD CALENDAR are doing well. They make neat year-long gifts! A few '92's with 62 different postcards scenes still available. \$5 ea. (add \$1.50 postage for 1, \$2 for 2). Use club address in CARD masthead.

CLASSIFIED ADS

FREE to members!



Member #64 Stan Hopkins, our Ontarioan, is interested in buying collections of NPW cards. Write him at Box 57, Pointe au Baril, Ontario, Canada P0G 1K0.

Member #183 Dorothy Jones hasn't heard from many of you. Check the Roster to see what she collects and write to her: Honolulu, HA.

The most beautiful PCs ever made. Over 200 Stengels from 50¢-\$3 and discount! Jim Ward Box 300, Lititz PA. (At York & Lanc. in Jan.)

THANK YOU



Once again **Bob Lieberher** has added to our Library. He has sent us illustrations of Hershey bar-size postcards to accompany text which we have. Thanks Bob.

MEMBER SELL/TRADE TABLES

It's good to see more members 'setting up' ea. meeting - and \$2.50 for any part or all of a full 6" table is a bargain! Also nice to have member **Diane Alleman** in Nov. with her 50,000+ chromes.



EXHIBITS



DISASTERS was nearly a disaster when only three boards appeared...just proves we're all 'youngsters'...not having in-depth collections in this category. BUT DECEMBER WILL BE DIFFERENT! **CHRISTMAS KIDS** is the theme and we should have a fine turnout!!

HOWARD STEINBERG FIRST Wrecks, Fires, and Floods in Pa.
JIM WARD SECOND Turkey Tom's Disaster
ANNE STEINBERG THIRD Port Deposit Snow Jam



Merry Christmas and
A Happy New Year from
The CARD Staff
and John Winsch PC Co.

DUES



\$7 for 1993 (\$3 each additional member at same address). PLEASE SEND CHECK NOW

- A) while you're thinking about it
- B) before the Holiday turmoil
- C) to keep us solvent -the Treasury balance is low (we needed a deposit for the Show)
- D) re-instatement costs time - and may cost you extra in the 1993 if you don't pay
- E) because one of your 1993 Resolutions is to do things on time! **THANKS!** Make check to: LCPC, P O BOX 300, LITITZ, PA 175430300