

The Card

MONTHLY PUBLICATION OF
LANCASTERCOUNTYPOSTCARD CLUB
LANCASTER, PENNSYLVANIA

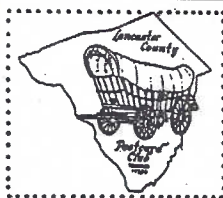
MEETINGS: 3rd MONDAY
FAITH UNITED
CHURCH OF CHRIST
1204 WABANK STREET
LANCASTER, PA

July 1993 - Vol. 4, No. 7

NEXT MEETING

July 19, 1993 7 pm
Buy/Sell/Trade 6 pm

Yearly membership is \$7 (plus \$3 per person, same address).
Articles and correspondence to: P.O. Box 300, LITITZ, PA.
17543-0300. Ads: \$15 full pg., \$8-1/2 pg., \$5-1/4 pg. prepaid.



DAN GOOD POSTCARD AUCTION

#1 In Conjunction With LCPC Expo

Dan Good #5 (deceased) was a businessman and a good provider. As such, he stated in his will that his postcard stand at Barr's World be run by his manager of many years, Nancy Gambler #34, for as long as she wished or until it proved unprofitable.



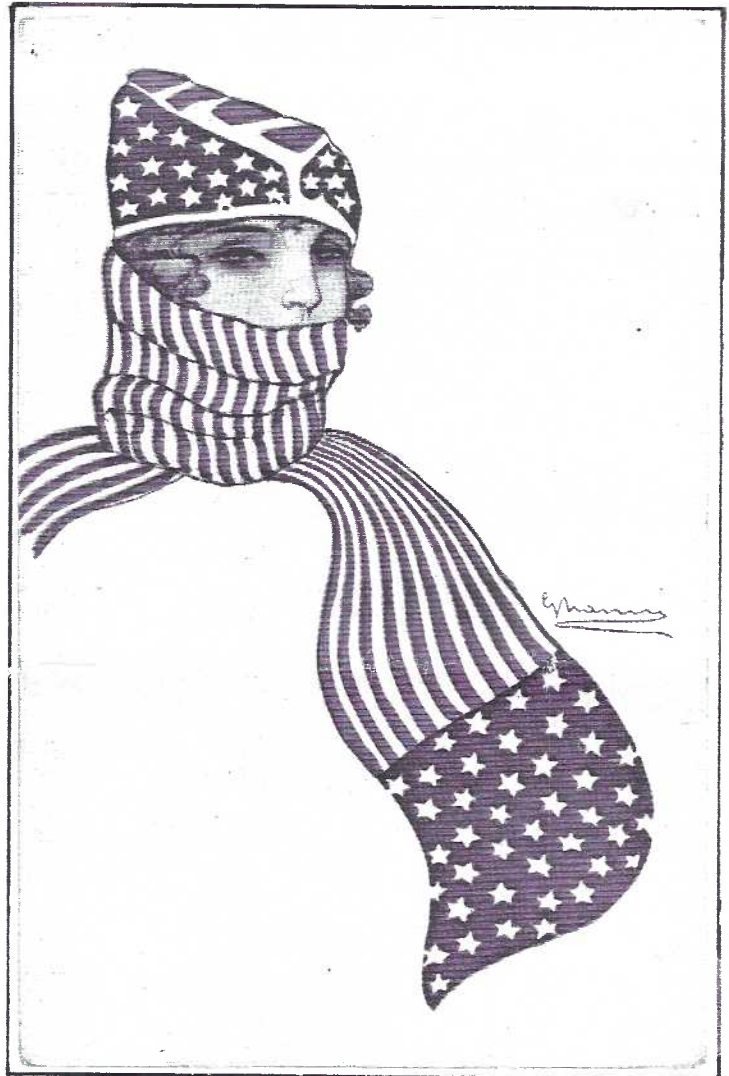
Dan's family has decided (after nearly 2 1/2 years of continual sales) that the stand should close. In consultation with Jim Ward it was agreed upon to conduct the first of two public auctions the day before LCPC's First Annual Postcard Expo. This would provide our out-of-town dealers and collectors the convenience of attending our Show and the Good auction.

Dan's will also provided that Jake and Brian Gilbert conduct the auctions. Springettsbury Fire Hall, East Market Street, York, will be the site. (Exit from Route #30 at Zion Road, south to Market St., west to the Fire Hall on the right. Ample parking. Food on the premises and nearby.)

Because of the number of lots (estimated at 550-650 per sale) and the quantity of cards per lot, it was decided to provide to buyers 6 full hrs. on Thursday, Aug. 19 from 1:00 to 7:00 pm for preview. The sale will commence Friday at 9:30 am and continue thru the afternoon (with a one hour lunch break).

Similar hours are reserved for Sept. 16 and 17 (prior to the Baltimore PC Show).

1989 silhouette by member #66, Jim Rudisill



Our patriotic month of July is represented by this handsome PC from Milan, Italy. #162-4 by Giovanni Nanni (1888-1969). Mashburn says Art Deco and Horses and Dogs w/Ladies were his specialty. Jack Smith associates the artist with Glamour, Military and Advertising. Soft red and blue splashes and the attractive blonde on a stark white background reinforce the fact that there is much beauty in simplicity.

NANCY TO CONTINUE SALES AT STAND

While postcards are being lotted and taken out of inventory, Nancy will continue to conduct both retail and wholesale business at the Barr's World stand (just above the PA Turnpike. Rte. #272 Adamstown). Hours are Saturdays from 10 to 5 and Sundays from 8 to 5.

If you never had the opportunity to see over 200,000 postcards under single ownership you should visit Nancy. In case you didn't know, Dan was a chicken wholesaler and trucker and when he retired, falling in love with his new hobby, postcards, was a simple matter - he continued to buy in huge quantities - and loved every minute of it!

Dan's Postcard Stand is a phenomenon collectors will talk about for years.

A GOOD SOURCE FOR REAL PHOTO POSTCARDS

Our local postcard story this month has lots of local flavor but comes from Hagerstown, Maryland. (ED.NOTE: apologies to Lancaster natives for an unLancaster article, but the moral in this story is universal.)

When someone tells you they "have old postcards for sale. Would you like to see them?" Don't just say "Yes." Tell them to look through the old family photo albums that may be with the old PC albums. Ask them to carefully remove the photos and bring along those with postcard backs. Better yet, have them bring the entire photo albums since they may contain peripheral information. See below).

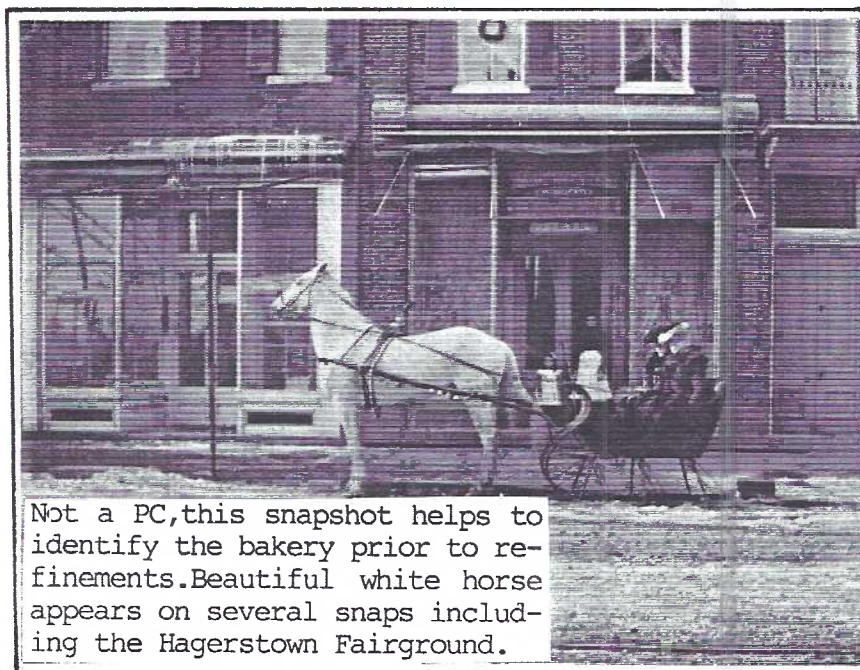
Such was my good fortune a short while ago. Knowing the family was from another town in another state was not too exciting. But, of course, there might be nice greetings. Who knew what?

The real photo postcards accompanying this story were the icing on a cake of nice Hagerstown, MD postcards in addition to several nice greetings and some Rally Days.

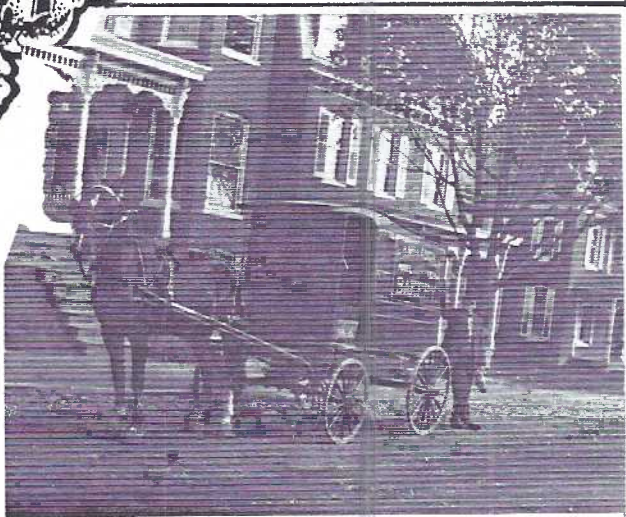
Along with many unidentified studio RP postcards and snapshot picnic-type PCs were newspaper accounts of the McLaughlins and these helped 'fill in the gaps' (the living relatives had only third-person accounts and these were hazy at best).



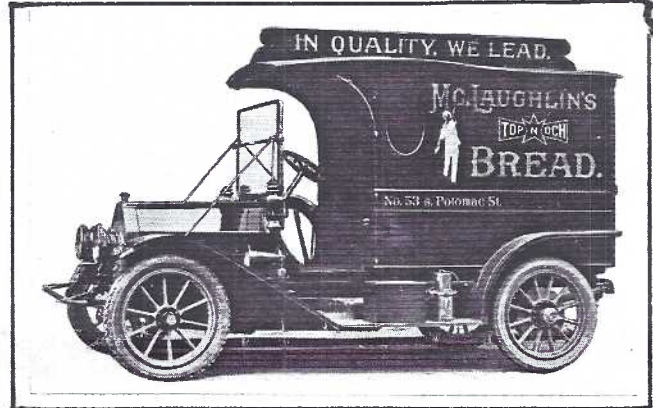
The McLaughlins pose before their bakery at 53 S. Potomac St., Hagerstown, MD. The occasion? no doubt the newly added signs that border the bakery windows. Awnings, a thermometer and different curtains were added since the horse and sleigh photo.



Not a PC, this snapshot helps to identify the bakery prior to refinements. Beautiful white horse appears on several snaps including the Hagerstown Fairground.



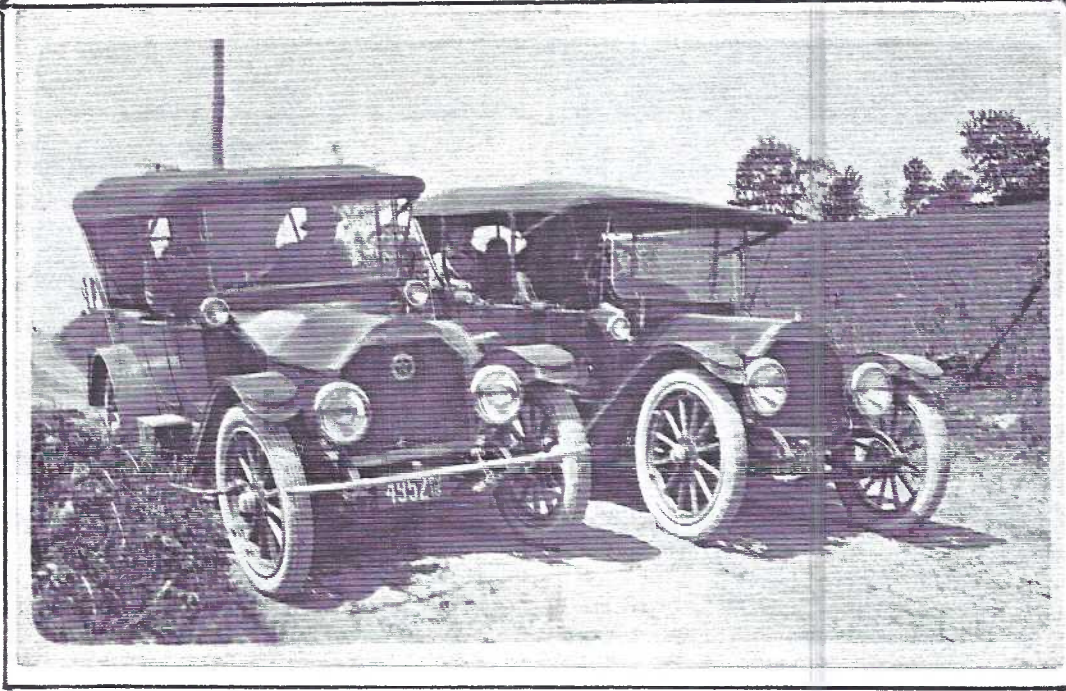
This black horse also pulled the family buggy. Sign reads- "H.D. McLaughlin Model Vienna Bakery". HD was the first generation baker . Snapshot.



A professionally shot photo most likely used by the painter to advertise his artistic ability. What kind of truck is it?



He's not the owner, but, Oh how proud the driver must feel to be in command of this new 1914 delivery truck! A basket of fresh bread and his hand to the money purse tell the story the McLaughlins wish to convey. Azo stamp box (Morgan & Brown Type #18) with date range Jan. 1910 to July 1918. (Same type for all PCs shown.)

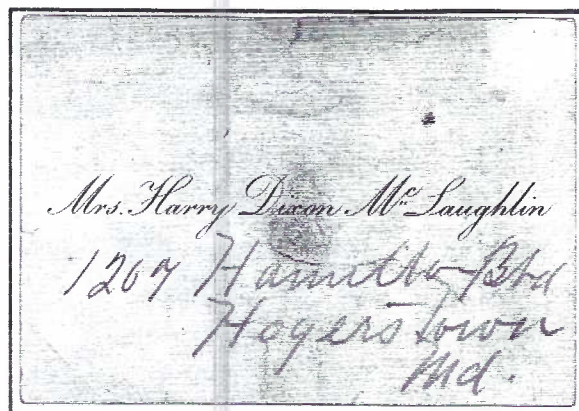


Additional real photo post cards show the McLaughlins at Sharpsburg, Gettysburg and picnicing. Others appear to be friends or relatives at St. Cloud post office, FL. There are hundreds of more 'family histories' out there waiting to be found in family photo albums on postcards. ASK TO SEE THEM! Don't let them meet a land fill fate!

**Mr. and Mrs. R. MacLaughlin
Seeing the Sights in
Washington**



Mr. MacLaughlin is one of the leading bakers of Hagerstown, Md., and with Mrs. MacLaughlin was in Washington recently, in attendance upon the annual convention of the Potomac States Association.



Mrs. H.D. McLaughlin's name card from photo album. 1207 Hamilton Blvd. was their residence.

Excerpt from bakery magazine in family photo album along with real photo postcards.
(McLaughlin incorrectly spelled.)

THE CUT-UPS or SUNDAY AFTERNOON FUN

Part I introduced us to THE CUT-UPS, postcards supplemented in 1906 Hearst Sunday American and Journal newspapers. We continue with more intricate ideas to entertain children, and incidentally (?) sell papers!

HEAT

Moderately difficult to complete, these are also known as **hold-to-flame**, **flat-iron** or **hot-match**. Instructions on the long side of the sheet of four reads: RUN A HOT FLAT-IRON OVER THE BACK OF THESE POST CARDS OR HOLD THEM OVER A GAS JET, OR A LAMP, OR A BURNING MATCH, (BUT BE CAREFUL NOT TO SET IT ON FIRE)-AND SEE WHAT HAPPENS!

An uncolored image appears in a blank part of the postcard scene completing the theme of the card's caption. 72 postcards are known. These should comprise 18 sheets.

INSTALLMENT

Instructions along the short side of a sheet of four scrambled PCs reads: CUT APART AND TRIM OFF WHITE EDGES. LAY SIDE BY SIDE TO COMPLETE PICTURE. SEND ONE AT A TIME TO YOUR FRIEND. Hearst title is "Cut-Up" Comic Post Card. All four cards contain part of the caption and are numbered, so children who knew "1-2-3-4" could even play the game.

Of moderate difficulty to find and complete, there are twelve known cards on three different sheets. These can be 'pricey' due to competition from Installment collectors.

MECHANICAL - SQUEEZE

Perhaps less difficult to find than the Installment type, these can be troublesome to find a nice condition because of their mechanical nature. A sheet contains only two postcards. Double space is now needed since both 'sides' are used for the 'toy'.

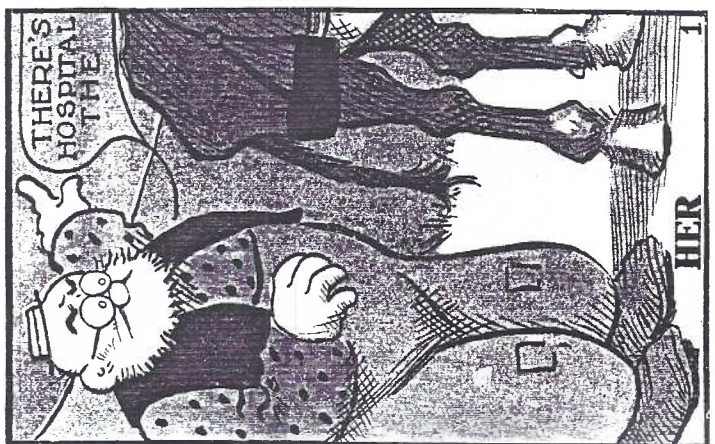
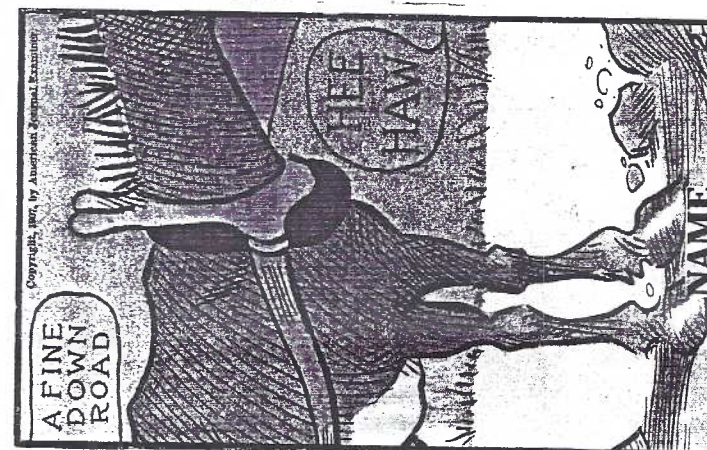
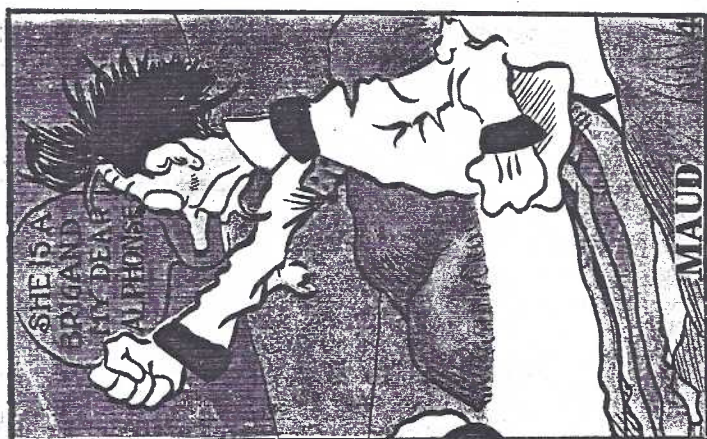
Called "Moving Picture Comic Post Card" the involved instructions if performed successfully gave the youngster a scene with 'action' when she squeezed together top and bottom edges making the postcard 'move'. And having a real 'moving picture' in your home! Wow!

Small tabs and thin slots in the paper were often damaged. Twelve cards are known, comprising six sheets.

MECHANICAL - MOVING TAB

If the 'squeeze' type weren't durable, it's small wonder any of these 'moving tabs' survived the first week of their life! Again only careful snipping by an adult or precocious child awarded the youngster a fine postcard toy. Generally a pin was required to serve as an axle so swivel action caused people, animals and eyes to move.

Two cards per sheet: half of each sheet - the two 'background' cards, the other half - the two 'moving parts'. Eight known postcards on four sheets.

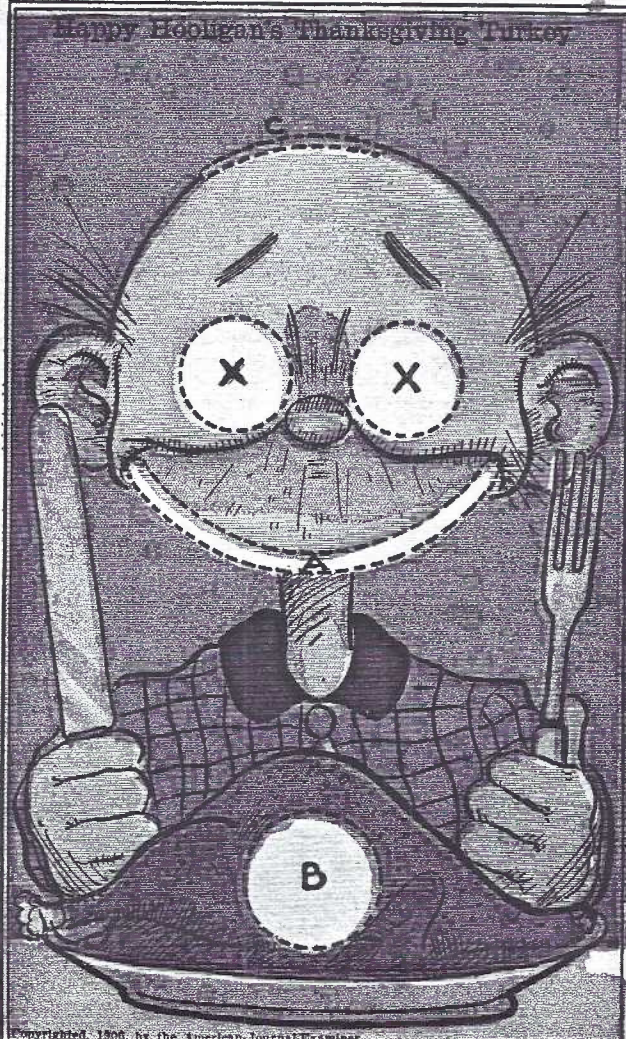
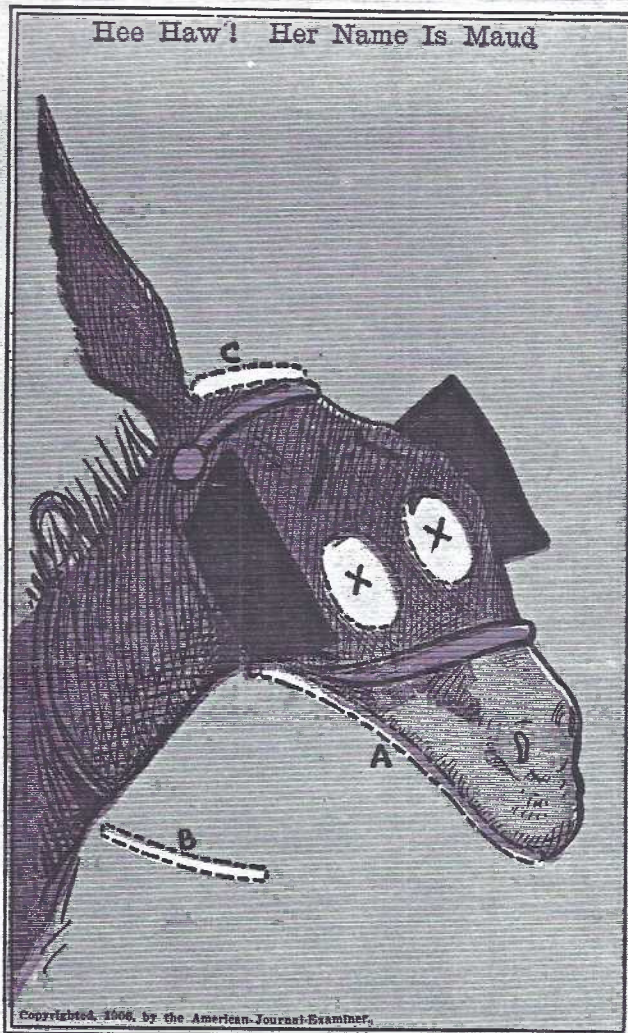


ALPHONSE and GASTON had their own comic strip, but Fred Oppen was notorious for 'crossing-over' his strip characters

HER NAME WAS MAUD refers to the chief player, MAUD THE MULE.

a complete picture. Send one at a time to your friend.
New York Sunday American and Journal.

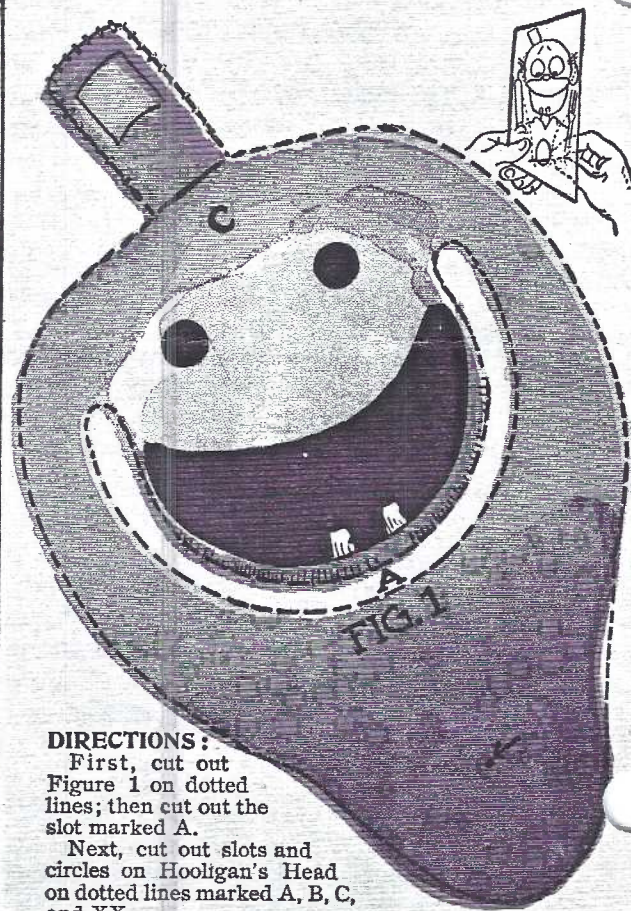
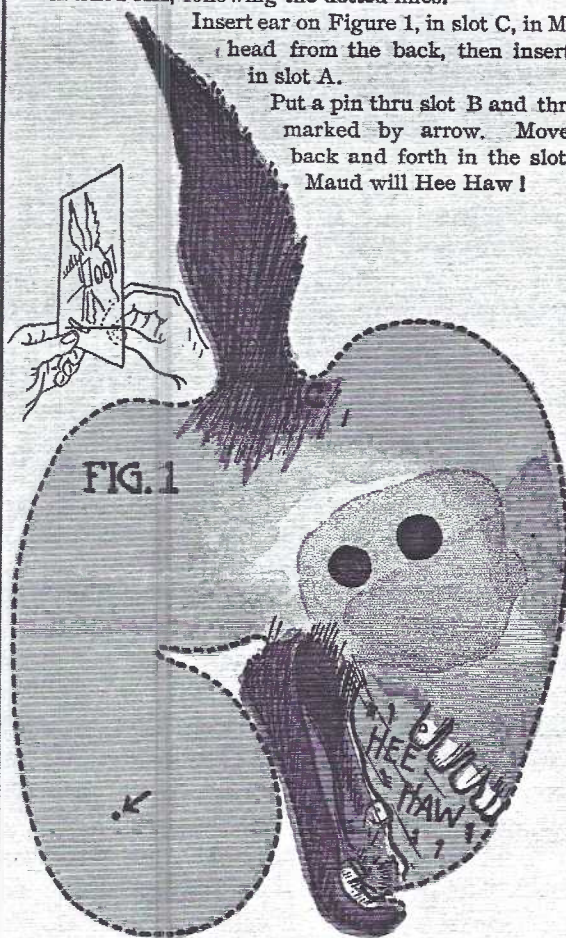
This scarce uncut sheet from a Hearst Sunday newspaper includes all the parts needed to complete two MECHANICAL TAB postcards. A pointed scissors and two pins were needed and certainly adult help!



DIRECTIONS.—First, cut out Figure 1 on dotted lines; then cut out slots on Maud marked A, B and C and eyes marked XX, following the dotted lines.

Insert ear on Figure 1, in slot C, in Maud's head from the back, then insert jaw in slot A.

Put a pin thru slot B and thru dot marked by arrow. Move pin back and forth in the slot, and Maud will Hee Haw!



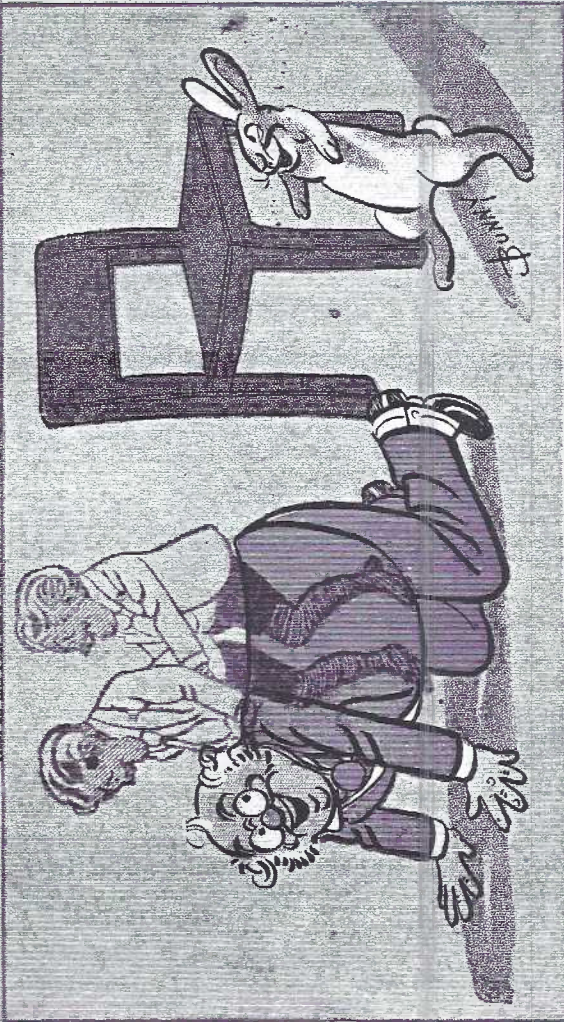
DIRECTIONS:

First, cut out Figure 1 on dotted lines; then cut out the slot marked A.

Next, cut out slots and circles on Hooligan's Head on dotted lines marked A, B, C, and XX.

From the back insert the mouth thru the slot in Hooligan's face and insert the can thru slot at top of his head. Now put a pin thru the turkey opening and thru the dot marked by arrow—move the pin around the circle and "Happy" will eat turkey.

Heat up this Post Card with Hot Flat-iron, gas jet or match (Don't burn it).



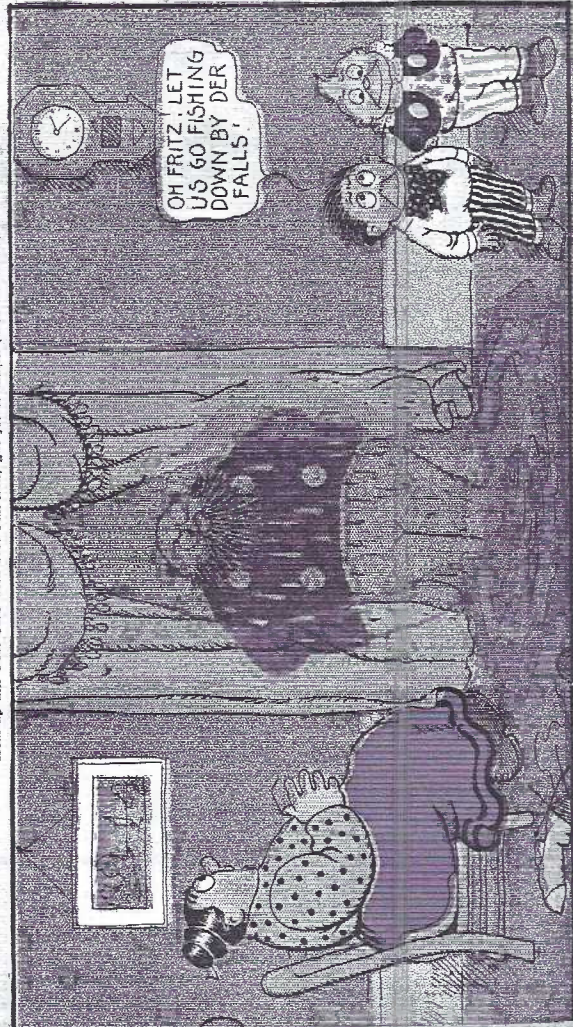
Copyright, 1906, by American Journal Examiner.

THESE ARE MAGIC POST CARDS—Run a Hot Flat-iron

Can you find the boys?

Burning

Heat up this Post Card with Hot Flat-iron, gas jet or match (Don't burn it).



Copyright, 1906, by American Journal Examiner.

Can you see the water fall?



Copyrighted, 1906, by the American Journal Examiner.

POOR LEANDER

POOR LEANDER

LEANDER is battered by the maitre d'. LULU attempts to defend him. The action is produced by squeezing the top and bottom edges of the postcard after it's been cut and folded properly - not as difficult to accomplish as the MECHANICAL TAB postcards.

HEAT type postcards (top row) show images of **FOXY GRANDPA'S** grandsons playing piggy-back (the "Bunny" was Carl Schultze's signature) and **THE CAPTAIN** with the **KATZENJAMMER KIDS** upper right. A portion of heating directions shows along bottom of the left postcard.

Part III will conclude **THE CUT-UPS** with "color-in" postcards and "magic slates".JFW

July 1993 pg.7

NEW MEMBERS

- #274 CHRIS RUSSELL P.O.Box 499,Winchester N.H. 03470. 603-239-8875. Dealer.
 #275 LEE COX P.O.Box 66,Keymar,MD.21757. 410-775-0188. Dealer.
 #276 SHIRLEY COX. Same as Lee.
 #277 EVA HAGEMEYER P.O.Box 243, Bowmansville,PA.17507. 445-9602. Halloween,Ellen Clapsaddle,Dressed Cats,Christmas.
 #278 RAY E.DENNIS 2 S.Charlotte St.,Manheim PA 17545. 665-3169. Santas.
 #279 CAROL DENNIS Same as Ray,also collects Santas and Holiday themes.
 280 JANICE WEITZEL 67 Spencer Ave.,Lanc.PA 17603. 394-1821. Patriotic and Holidays.
 NOTE- The annual roster had gone to press with #276 so keep this and future lists from THE CARD to up-date your member roster #280 - 60 (attrition).= 220 actual members.



Exhibit Winner ribbons and roadside banners for our August 21 POSTCARD EXPO were on display in June.Giant clear bags will be purchased by LCPC and given to each Exhibitor to house the boards for showing at the Expo and for future use. Ad Postcards are in the mail to nearby clubs and dealers

DEALERS FOR AUGUST SHOW - TAKE NOTE!

You are required to have a PA. Sales Tax Number from the Comm.of PA.,Dept of Revenue A temporary one is all you need and it can be obtained by phoning the Lancaster County office at 717-299-7581. You can be liable for all sorts of bad things if you don't have one. Don't procrastinate!

FUTURE SHOWS



- JULY 9-10 YORK,PA. YORK PC CLUB. Aldergate Church, Tyler Rd. off S. Queen St. 10 to 6 and 9 to 5. \$1.50 adm.
 JULY 16-17 CHERRY HILL,NJ. KING of PRUSSIA SHOW.Sheraton Poste Inn,Rte.70 west of I-295. 9-6,9-3. \$2 adm.
 Aug. 20-21 York Stamp/Postcard Show. York Mall, East Market St.,10-9.Free adm.
 Aug. 21 LANCASTER COUNTY POSTCARD EXPO.Farm and Home Ctr.,Rte.72 Manheim Pk. 9-6.\$1 adm
 SUPPORT YOUR OWN CLUB - BE A 2-HOUR HELPER,
 EXHIBIT YOUR CARDS - SUPPORT YOUR DEALERS!
 EXHIBIT ENTRY FORMS:Deadline July 31!

THANKS, Sally Danz, for the postage you've been giving LCPC from time to time.



MONTHLY EXHIBITS



We took a solemn look at RELIGION in June and 66 members and guests agreed these exhibitors were all winners:

WALT MOWRER FIRST	Prayer Time
BARB MOWRER SECOND	The Ten Commandments
RUTH MOYER THIRD	Rally Day

Honorable Mentions

BETTY BROWN	American Gospel
POLLY CURTIS	Jesus Was His Name
EARL CARVER	Holy Land Churches
HELEN CARVER	Christianity
DON DAVIS	Religious Verse-atility
BOB KRAMER	Children in the Church
HAROLD MOYER	The Ten Commandments
KATE STEHMAN	He Lives for Everyone
KATE STEHMAN	The Amish Country
ANNE STEINBERG	Faith,Hope and Charity
JIM WARD	The Passion Play

Thanks to a record 14 exhibitors and to Chrm. Charles Griffiths for his over-view of the exhibit bds. We all learn something!
 JULY'S topic= The Fourth of July
 AUGUST'S topic (at the picnic)= Chrome PCs

FOR EXHIBITORS ONLY

EXHIBITOR _____

EXHIBIT _____

FULL-COLOR postcard in LIMITED EDITION, one for each entry in our FIRST POSTCARD EXPOSITION. Get busy now. You'll be happy to look back on this special souvenir postcard many years from now. Art by J.Rudisill #66

Addendum to July 1993
issue of THE CARD

LANCASTER COUNTY POSTCARD AUCTION #13

Following business meeting of 7/19/93. All items are postcards unless stated
Examine carefully. u=used, un=unused, RP=real photo PC, cc=continental chrome.

Donated by the Studenroths, #171 and #172:

Lot of 72 PCs, mostly unused chromes, linens
a few cc's. 99% views incl. few Hershey.PA.

- | | |
|--|---|
| 1 4 New Year's children u | 49 3 Ephrata incl. Lausch cabin (blank back) |
| 2 4 same | 50 3 Denver, nice and old un |
| 3 4 Christmas, birthday u | 51 4 Indians u/un |
| 4 4 Birthday un | 52 4 Lancaster old u/un |
| 5 5 Valentines u/un | 53 4 Reading old u/un |
| 6 1 silk, 3 others u/un | 54 12 Pennants u/un |
| 7 4 Valentines u/un | 55 2 Pkgs. postal cards, sealed, unk. contents |
| 8 4 New Years u/un | 56 7 "Greetings from Lanc." u/un |
| 9 4 New Years, Easter u/un | 57 4 D.B. Landis un |
| 10 4 Christmas, Thanksgiving u/un | 58 4 F & M, incl. Seminary (1 slt. damage) |
| 11-17 Mostly linens, u/un | 59 4 Lanc. (Camp Shand, etc.) u/un |
| 11 c. (about) 60 PA., incl. Mt. Gretna | 60 4 Lanc. churches u/un |
| 12 c. 50 New England, Niagara Falls | 61 4 Lititz un |
| 13 c. 80 Southern states incl. DC | 62 1 Album: 47 greetings |
| 14 c. 100 Western states | 63 20 Bermuda, 'beautiful continentals' |
| 15 c. 40 Foreign incl. Canada | 64 7 Folders: Colo., Royal Gorge |
| 16 c. 90 Mixed states incl. salt add/on | 65 11 Foreign: Zurich, Bavaria, Ger., etc. cc |
| 17 17 Folders incl. movie star, T-pike | 66 20 USA: SF, NYC, Hollywood, etc. cc |
| 18 50 Covered bridges, chrome, un, asst. states | 67 12 Foreign: London, Eire, Bermuda cc |
| 19 250+ Niagara Falls, u/un, all eras | 68 22 same: Barbados, Paris, Brazil, Guate, cc |
| 20 250+ Ships, boats, etc. u/un all eras | 69 16 USA: SC, Atl. City, Texas chromes |
| 21 4 ad postals, Dick Lightner, Lanc. PA | 70 18 Mexico chromes |
| 22 1 Album 200 u/un, mostly views | 71 9 Vermont chromes |
| 23 1 Album 197 u/un, mostly greetings | 72 5 Folders: USA incl. '82 Worlds Fair |
| 24 13 Tuck greetings u | 73 10 Trains chromes u/un |
| 25 10 Asstd. ad postals, some dups. u | 74 14 A. Lincoln " u/un |
| 26 4 Reward (non PCs) diff. Composers un | 75 5 Military: Ft. Riley, KS. linens, un |
| 27 12 Lancaster City trade cards | 76 4 Military: Camp Dix, NJ, YMCA series |
| 28 RP Gotwald chapel, James & Arch, Lanc. un | 77 14 Public bldgs. lin., chromes u/un |
| 29 Danz barber shop, Lanc. un | 78 10 Niagara Falls " " un |
| 30 RP child Evangelist w/1909 Lanc. schedule | 79 10 Restaurants chromes un |
| 31 Complete set (20) Tuck Lanc./Ephrata u/un | 80 11 Covered bridges " un |
| 32 10 Dutchland Motel, Rt. 222 linens, dups, un | 81 20 Foreign cc u/un |
| 33 33 b/w Ephrata by Merrimack, 3 diff. un | 82 22 Bermuda cc un |
| 34 33 Marietta (bank, homes, etc.) 4 diff. un | 83 RP Lanc. PA court house un |
| 35 38 Marietta (birds-eye, etc.) 5 diff. un | 84 RP Lanc. PA same (Lanc. Photo. Supply) u |
| 36 35 Manheim park, Donegal, Haldeman, 6 dif un | 85 RP July 4 parade, N. Queen St. un |
| 37 26 Diff. Hershey bar-size color, b/w un | 86 RP same but different un |
| 38 39 Diff. chromes Lanc. City, Co., Amish, u/un | 87 7 Lanc. views, all eras u/un |
| 39 75 Diff. PA (no Lanc.) all eras, u/un | 88 RP dog un |
| 40 32 Diff. N.J. all eras, u/un | 89 12 FL., 6 VA mostly linens, u/un |
| 41 214 Diff. mixed states (no PA, NJ), u/un | 90 10 Amish chromes un |
| 42 95 Diff. foreign, all eras, u/un | 91 10 Ladies, children u/un |
| 43 11 Diff. velvet applique u/un | 92 12 Easter u/un |
| 44 13 Diff. heavy embossed, air-brushed u/un | 93 Shoebox of misc. old, new |
| 45 49 Diff. old mixed greetings u/un | 94 25 H pocket PC pages u |
| 46 c. 1,000 unused PC sleeves | NOTE: Pick up an AUCTION FORM <u>now</u> so you |
| 47 3 Animated rabbits (Racey) + 1 Mainzer cat | have one for the future. The Auction Comm- |
| 48 3 Columbia PA incl. opera house u/un | ittee will no longer do your work for you! |

