

SPECIAL COMMEMORATIVE ISSUE

The Card

MONTHLY PUBLICATION OF
LANCASTER COUNTY POSTCARD CLUB
LANCASTER, PENNSYLVANIA

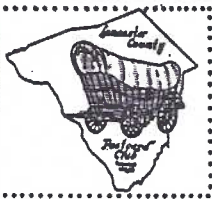
MEETINGS: 3rd MONDAY
FAITH UNITED
CHURCH OF CHRIST
1204 WABANK STREET
LANCASTER, PA

August 1993 Vol. 4, No. 8

NEXT MEETING

8/14 Fun 'n Games 2 pm
Picnic Meal, Program 4 pm

Yearly membership is \$7 (plus \$3 per person, same address).
Articles and correspondence to: P.O. Box 300, LITITZ, PA.
17543-0300. Ads: \$15 full pg., \$8-1/2 pg., \$5-1/4 pg. prepaid.



This FULL COLOR COMMEMORATIVE FRONT PAGE
available with check for \$1 to LCPC plus
size #10 SASE or you may pick up the page,
unfolded, at the August meeting. Limited ed.

36A38

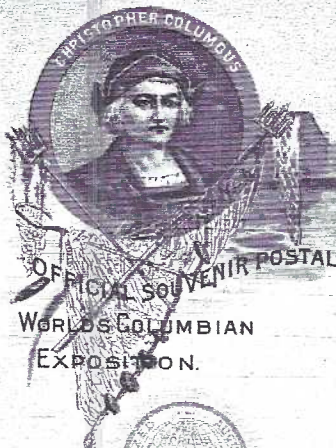
FORD EXPOSITION BUILDING BY NIGHT,



KAUFMAN-FABRY PHOTO

4A-H968

60 Years Ago.
Chicago World's Fair
1933. Night view lin-
en postcard by Curt
Teich & Co., Inc.

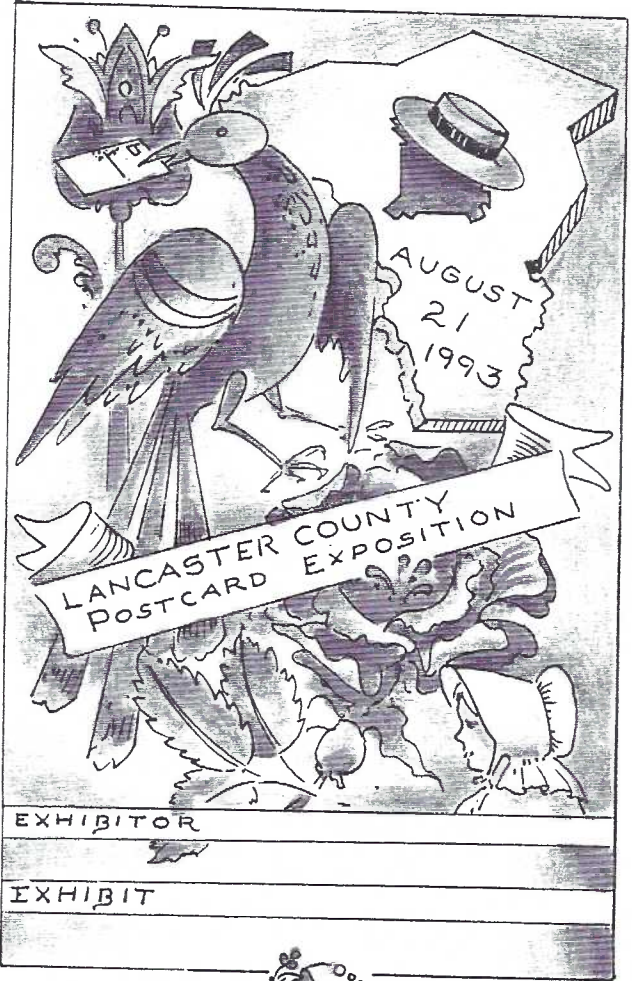


W. H. Emerson

W. H. Emerson

MADE IN U.S.A. PRINTED IN U.S.A. POSTAGE WILL BE PAID BY ADDRESSEE

100 Years Ago.
Series #1, Design #8
by Charles Goldsmith
considered by collec-
tors as the begin-
ning of United States
picture postcards.



FULL COLOR POSTCARD
awarded for ea. entry in
our First Show Exhibit.
5 boards - 5 postcards!



THE FISHERIES BUILDING

NEW MEMBERS

Membership Chairlady Sally Danz has done a fine job in signing up new members, many of whom are visitors to our meetings:

#281 **ANDREW(DREW) CURTIS** 20 Peacock Dr.Lanc PA.17601. 898-8492.He collects animals,cov-
ered bridges and funny PCs. **Drew** is another
of **Polly Curtis's** grandchildren!

#282 **CLYDE L.GROFF** 713 Columbia Av.,Lanc.PA
17603. 392-8252. **Clyde** collects everything.
He is a genealogist with the Lanc. County
Historical Society.

#283 **HERB KAUFFMAN** 1779 Wilson Av.,Lanc.PA.
17603. 394-9413.**Herb** likes local cards with
"changes during my lifetime".

#284 **KEITH STAMAN** 219 Ruby St,Lanc.PA 17603
299-5157. Ocean City and Long Beach Island,
NJ; and "cheap PCs used as coasters(laminat-
ed) in our restaurant". **Wish You Were Here**
is at 108 W. Orange St.(Their business card
is a mini postcard!)

What a great variety of NEW MEMBERS! Wel-
come to all - and don't forget our PICNIC
Aug.14 and FIRST EXPO on August 21!

#284 - 60 (attrition) = 224 actual members



IT WENT THROUGH THE MAIL!

A 'now-n-then column' of unusual postcards
that were actually mailed,post-marked and de-
livered. Do you have an example to include?



KORY
OLD HOME
WEEK

COME TO

This is the key to the city's gates
Which will be unlocked on July dates

July 4-9
1909

CORRESPONDENCE

*received your
letter this
morning and
was very glad
to get it Clyde
is better but
not working
yet i wish
you could
come out
were all well
Gard*

Post Card

*Mrs C. T. Moore
602 Wells ave
Athens
Pa*



CORRY, PA.
Old Home Week
July 4 to 9
1909

This month's mail survivor is the OLD HOME WEEK key
made on PC stock and cancelled 1 pm, Jun.21,1909 (in
time to welcome everyone to Corry/"Kory"). Even the
delicate 'teeth' on the bit key came through unscathed!
The other side(reduced 30%)reads "1866,NO MORE STUMPS".
Geographically,Corry lies in nw PA.,the upper right
corner of a triangle formed with Erie and Titusville
where there are still plenty of trees!



MONTHLY EXHIBITS



A drizzly warm evening didn't deter the
usual brigade of 60 - 70 members and guests
nor did it dampen the fireworks on July's
boards. All winners, we start off with a
big bang:

HAROLD MOYER	FIRST	The Big Bang
SANDRA SHAUB	SECOND	July 4th,1776
JIM WARD	THIRD	Uncle Sam's Birthday

Honorable Mentions

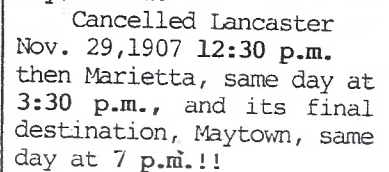
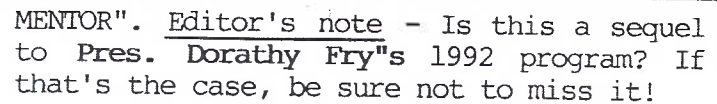
BETTY BROWN	Old Glory Forever
EARL CARVER	The Fourth Forever
POLLY CURTIS	The 4th
ELIZABETH GRAVER	The Birth of Our Flag
BOB KRAMER	July Fourth
KATE STEHMAN	Grand Old Flag

The Exhibit Board topic for August is
Chrome Postcards or Modern Postcards. Here's
another w-i-d-e open subject which should
attract lots of exhibits - and how about a
dozen NEW members? **September's** subject, an-
other great crowd-pleaser is **Smorgasbord or**
Potpourri (I'm wearing out my dictionary)..
..anything your little heart desires is OK!

THE CARD STAFF

Artist Jim Rudisill. Proofreader, Indexer,
Now and Then Columnist, Info.Contributor and
Mentor Charlie Griffiths. Editor (the buck
stops here) Jim Ward. All correspondence to
P.O.Box 300, Lititz,PA 17543-0300.

Pres. Don Davis will present a "CHALK TALK" entitled "A POSTCARD to a FAVORITE



This sounds like a fine project and we should give them any information we have. Maybe we'll ask their help sometime for similar information on local postcards.

OLD POST OFFICE LOSES ITS DOME

"The cornice surrounding the eaves, as well as that portion of the graceful tower not constructed of stone, are of copper, which will last as long as the stone itself". The February 1892 New Era story went on - describing Lancaster's new Post Office that was recently built.

But unforeseen in this prediction was the possibility of a lightning bolt such as the one that struck the landmark dome less than a month ago - the evening of July 11.

A proliferation of picture postcards of the 'new' Post Office occurred during the postcard's "Golden Age"(c.1903-1910). There had been a \$75,000 expansion of the building in 1906. This doubled its size and most certainly was the reason for the interest and pride that generated so many views.

Our archivist, Charlie Griffiths #4, comes up with a count of 18 different published postcards (undivided and divided backs). Add to these a few real photo type and even a leather postcard (one of four city views).

If this makes the old PO view "common" maybe that's so. But give this beautiful building another look. Do you have any other card with Venetian Renaissance style with a Moorish arch motif in sculptured frieze work?

The copper (now heavily patined) is being salvaged, in hopes it will be useful in restoring the dome. The old Folmer-Clogg umbrella factory is regaining its tower. Why should the Old Post Office/City Hall tower be lost? The character of a city smiles with its skyline.

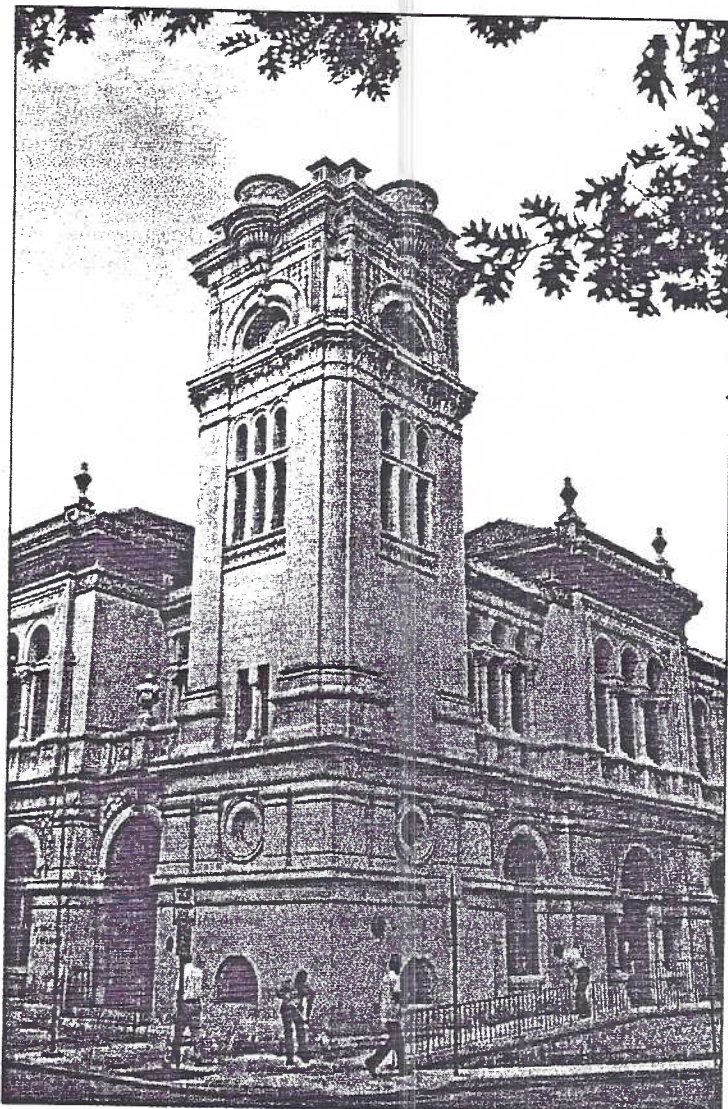
The New Post Office, Lancaster, Pa.



Full color view div./back published by I. Steinfeldt, printed in Germany, clearly shows the pharmacy on the right and cobblestones on N. Duke St. The new addition can be seen on the left along N. Duke St.

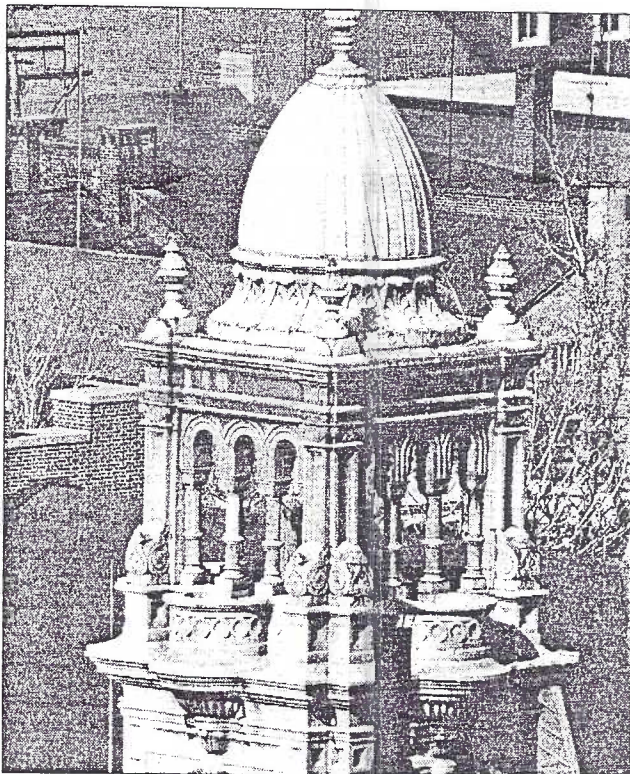


This A.C. Bosselman & Co. view #8427 (printed in Germany) shows the Post Office on N. Duke St. before the addition to the south side. Very few views show the row of buildings to the right. This particular PC has an advertisement by Hoffmeier Bros.' Furniture Store across the entire address side. It was obviously intended as a 'give-away' since it lost its mailing function. How many additional views are in your collection with the Hoffmeier ad? Divided back.

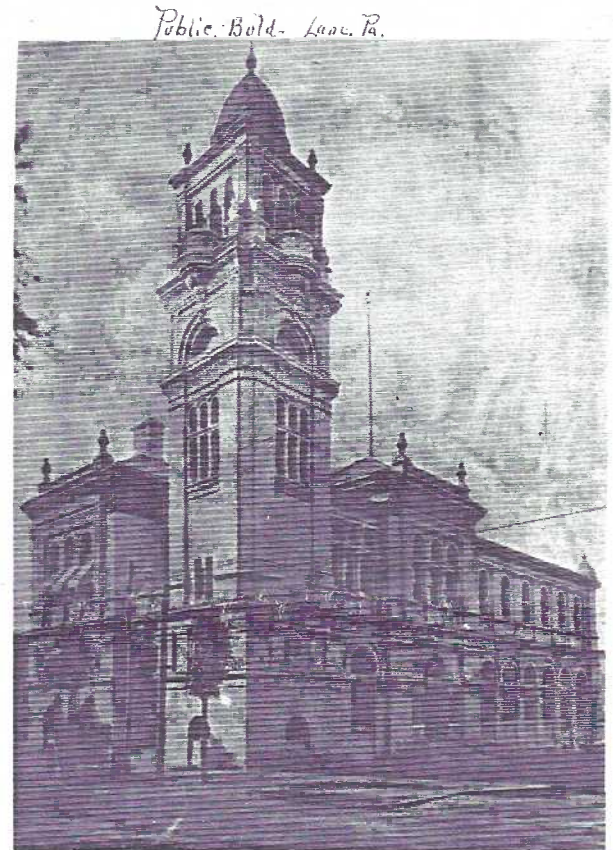


New Era Photo by Keith Bourn

City workers sweep and scrub outside City Hall this morning. Gone is the landmark copper dome and ornamental base that sat atop tower in center of picture.



This is the historic City Hall dome and 30-foot ornamental copper base that was leveled by lightning and fire Sunday night.



Public Buld. Lanc. Pa.

*Walter last wishes
Lancaster Pa.
Lancaster Pa.*

Real photo und/back, unidentified publ.Cyko stamp box, #2 "POST CARD"(A.Brown) and cancelled Mar.5,1907. Sent to Mrs.B.Hollinger, W.Lemon St.,Lanc. "Public Buld.-Lanc.Pa." in red above view. There are other city and county real photo views captioned in red by this same person. Let's form a committee and find out who it was!

Lanc. New Era photos in left column.

IMPROVED ILLUSTRATIONS

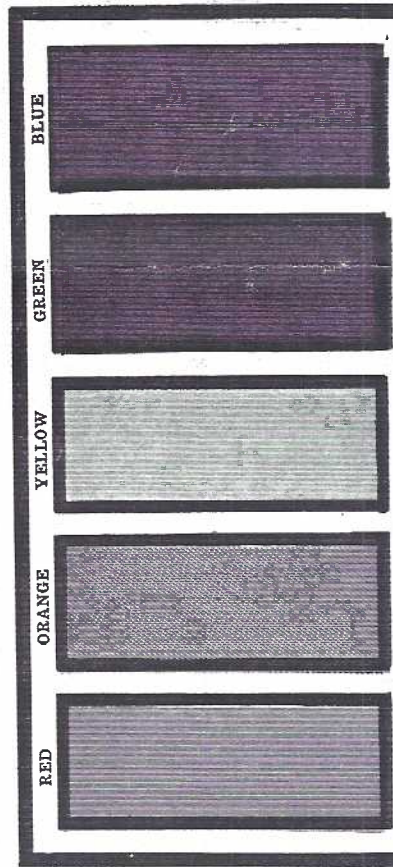
Compliments about last month's CARD came from all directions! It's nice to be noticed. But the decided improvement comes from Sir Speedy Printing and their laser/printer. It "reads" all of our illustrations and post-cards including the photos and our printing quantity now brings down the per page price.



HOW HOT WAS IT?

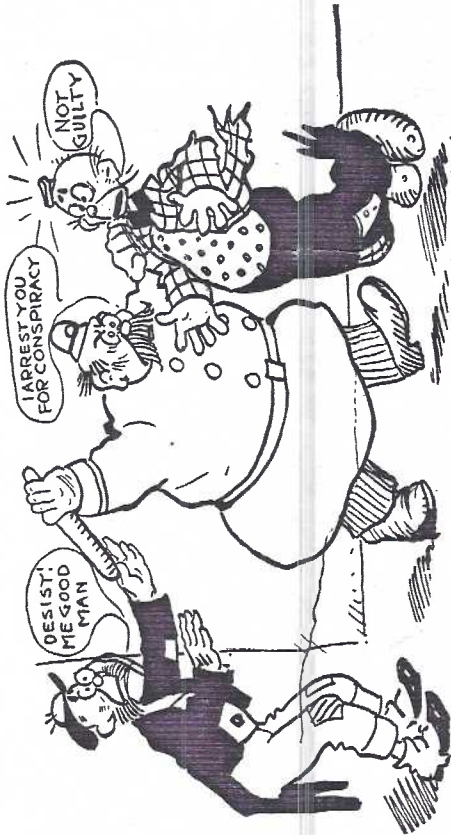
When you pry the lid from a large tin of pretzels that's pressed against your bare belly and you don't feel it - that's how hot it was!But even if we have another heat wave don't forget there'll be a cool breeze from the river at the PICNIC and the Center is air conditioned for the SHOW!!!

COLOR YOUR OWN COMIC POSTAL CARDS AND SEND THEM TO YOUR FRIENDS.



This Palette contains enough Water Color Paint to color the outline picture below. Color the picture, then carefully cut on the heavy black line surrounding the Palette, which makes a frame for the picture.

Bend on this dotted line and insert the lower part of frame behind tab.



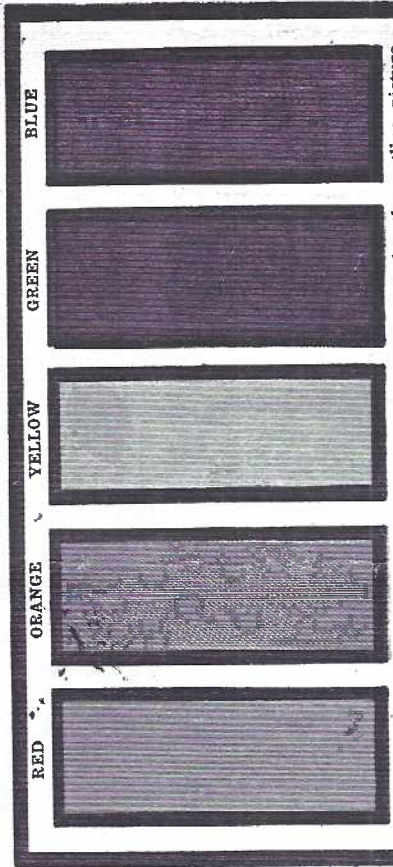
Copyrighted, 1907, by the American-Journal-Examiner.

Cut around this tab to hold to frame.
Apply paste or mucilage behind tab.

THE HOOLIGANS
In Trouble Again
SUPPLEMENT OF NEW YORK AMERICAN AND JOURNAL

COLOR-IN and MAGIC SLATE Sunday Supplement Comic Postcards are considered by the author to be the most difficult to find of all the 'Sunday Cut-Ups'. Uncut sheets of either are very scarce. This sheet of two

COLOR YOUR OWN COMIC POSTAL CARDS AND SEND THEM TO YOUR FRIENDS.



This Palette contains enough Water Color Paint to color the outline picture below. Color the picture, then carefully cut on the heavy black line surrounding the Palette, which makes a frame for the picture.

Bend on this dotted line and insert the lower part of frame behind tab.



Copyrighted, 1907, by the American-Journal-Examiner.

Cut around this tab to hold to frame.
Apply paste or mucilage behind tab.

JIMMY.
He Goes Coasting.
So Does His Papa.
SUPPLEMENT OF NEW YORK AMERICAN AND JOURNAL

postcards is complete with bright paints (still usable). From the N.Y. Sunday American and Journal. Other Hearst papers which carried these comic PCs in 1906 were in San Francisco, Chicago and Boston.

THE CUT-UPS or SUNDAY AFTERNOON FUN

Part I and II covered the most often found Hearst Sunday newspaper comic postcards - the plain and the heat; less common, the installments, the mechanical squeeze and moving tabs. Part III will describe my choice for the most difficult to find. JFW.

Finished COLOR-IN postcard. BUSTER BROWN, TIGE and friends are painted, the paint palette cut away and the frame folded down. Many COLOR-IN PCs are found w/o frames.



COLOR-IN

A sheet of two postcards, each with its own palette of five colors. On the long edge of each reads: COLOR YOUR OWN COMICAL POSTAL CARDS AND SEND THEM TO YOUR FRIENDS. When finished, the child carefully cut away the water color 'palettes', folded that half over forming a frame over his painted picture. The frame then cleverly 'clipped' in behind the picture's caption!

This type is considerably scarcer than any of the above, especially with frame intact. Most frames have been pasted down but even that aided survival of an elusive PC. Cards are often crayoned. Frames are often gone or were accidentally cut off. Eight cards are known on four sheets.

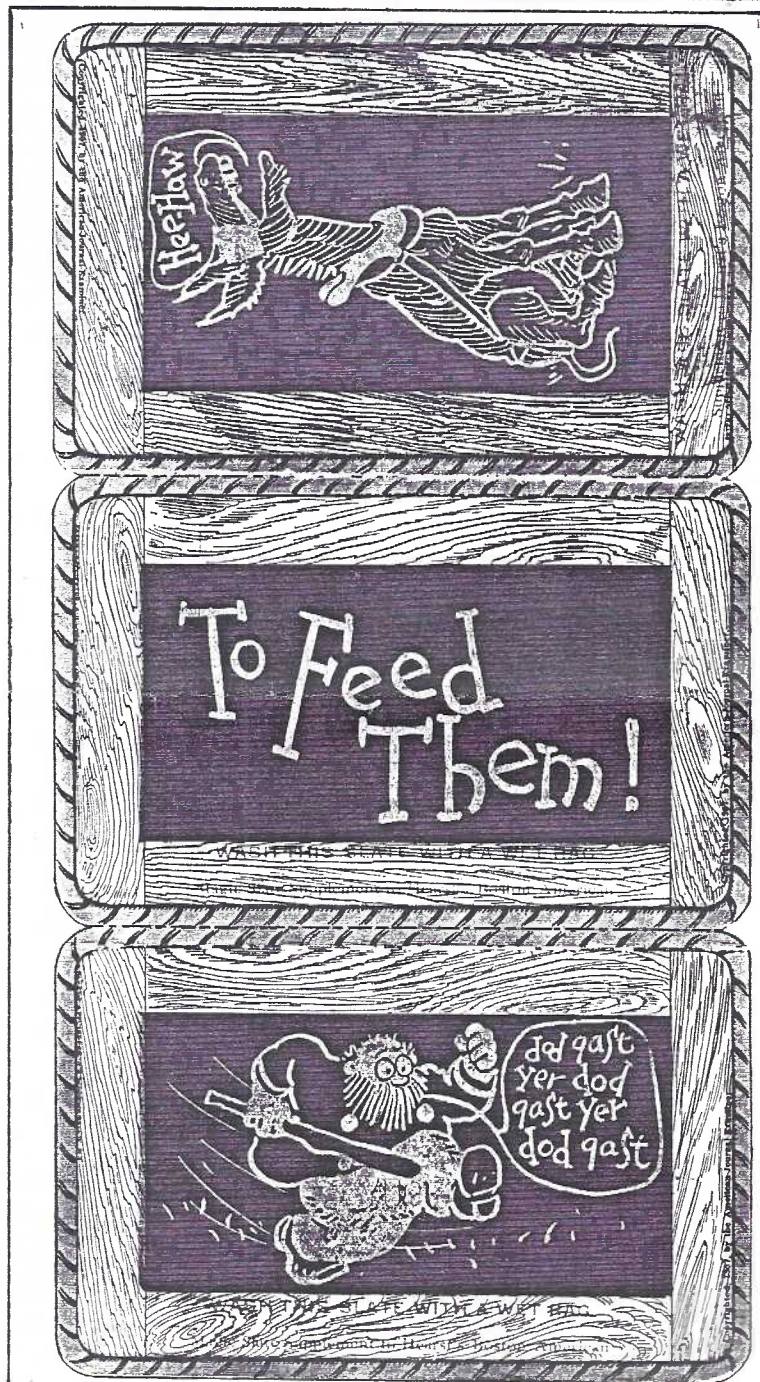
MAGIC SLATE

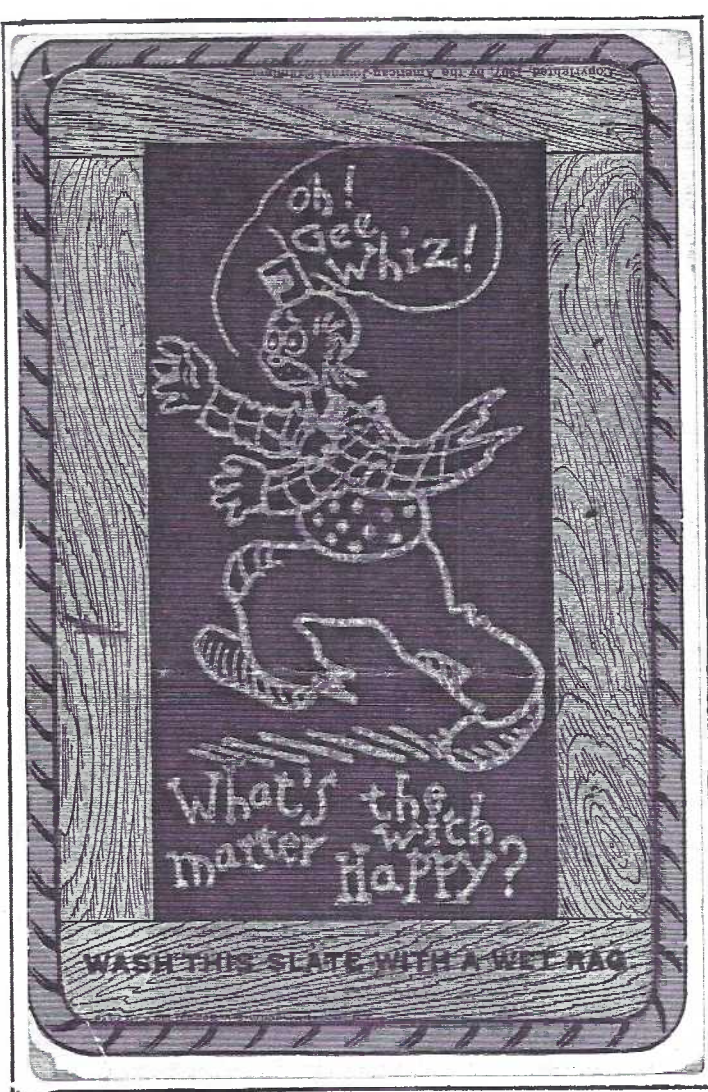
This is the only type found as sheets of three. Instructions on each postcard are found on the 'wood-grain' frame of the slate: WASH THIS SLATE WITH A WET RAG.

By far the most difficult to find of all types (in this writer's opinion). Why? Ugliness must be the answer. Except for a rope cord of red or blue, the postcard is simply a black board/slate with a chalk drawing and/or scrawled message. No other color. Nothing attractive enough to warrant saving in an album or posting to a friend.

The simple drawings are recognizable as to artist but the haphazard lettering is the same for all of the art. It would be conjecture to attribute the lettering to one artist but an aficionado might guess it was Rudolph Dirks.

Scarce sheet of three MAGIC SLATE PCs. Found in Boston Sunday Am. by a great 'picker', JOSE Rodriguez, #36. (70% actual size).





The child's delight was in erasing the first (original) picture or message and finding the 'answer' or continued 'story' on the second (final) slate. But with little more than a smeared black card, there was little reason to keep it. For the same reason the writer feels today's uninformed dealers pass over the Magic Slates. If they do stock them, they are usually the Katzenjammer Kids, or Buster Brown or Happy Hooligan - the recognizable major characters.

Identifying the **original** drawing from the **final** drawing can be tricky at best. Sometime the 'second' picture shows under the thin carbon(?) coating of the first. But in any case a word of warning: don't confuse these scarce Magic Slates with similar common slates of other comic series. It must say MAGIC SLATE SUPPLEMENT on the address side of the postcard as well as the named Hearst newspaper.

Sunday comic, upper left, is HAPPY HOOLIGAN as the first (original) picture on the postcard. Upper right shows original HAPPY partially washed away revealing dragon/dinosaur(?) as second picture on the same PC. Lower right is second (final) picture.

90% of "slates" found are second stage cards. What child - or adult could resist a fast wipe to find the answer? - kind of like NOT scraping away a 'window' to see if you've won a premium!



Since I feel I am still missing a few Magic Slates, I will offer that there might be 12 different originals on four sheets of three cards each. With both unerased originals and erased (final) sketches, that should allow for 24 different scenes/messages to be found on Hearst Comic Magic Slates. At this writing, I have 22 different M.Slates.

I will be happy to trade information on this Slate mini series if you will first send me copies (both front and back) of Magic Slates which you have.

Today's collectors of the Hearst comics have alternate avenues from which to choose

in addition to striving for the entire 152 postcards (see accompanying chart). You can look for the **comic characters** you enjoyed. You can seek your **favorite artist** (in the case of Oppen this would include several characters/strips). Or you may be enchanted by one of the unusual **types of toys** derived from the Sunday afternoon fun. In any case, give these 'uglies' more than a glance. You may surprise yourself and discover another great way to enjoy postcards!

Correspondence may be sent to: Jim Ward
P.O.Box 300, Lititz, PA 17543-0300.

RECAP of HEARST COMIC POSTCARDS by TYPE and CHARACTERS

TYPES: PL=Plain HT=Heat IN=Installment SQ=Squeeze TB=Tab CL=Color SL=Slate

CHARACTERS	PL	HT	IN	SQ	TB	CL	SL	TOTAL
Alphonse & Gaston	1			1				2
Buster Brown	2	11			1	2	1	17
Foxy Grandpa	1	10	4			1		16
Happy Hooligan	2	8		2	2	1	2	17
Katzenjammer Kids	2	17	4	5	1	2	4	35
Little Jimmy	3	5		1	1	1	1	12
Lulu and Leander	1	10		2		1		14
Maude the Mule	1	10	4	1	3		3	22
Mr. Jack	2	1					1	4
Bugs (of Bugville)	1							1
TOTAL	16	72	12	12	8	8	12*	140*

*plus 12 wiped-off "final stage" slates = 152 scenes on 140 postcards

RECAP of TYPES on COMPLETE SHEETS of HEARST COMIC POSTCARDS

Plain type	16 cards = four sheets of four cards each
Heat type	72 cards = eighteen sheets of four cards each
Installment type	12 cards = three sheets (sets) of four cards each
Squeeze type	12 cards = six sheets of two cards each
Moving Tab type	8 cards = four sheets of two cards each
Color-In type	8 cards = four sheets of two cards each
Magic Slate type	12 cards = four sheets of three cards each
TOTAL	140*cards on forty-three sheets

I believe this is the first time information on the two 'phases' of magic slate cards has been put in print. It may not be original information, but I am unaware of its having been shared with the public aside from my first exhibit board display on the subject at a postcard show in York, PA, November 1989.

Jim Ward



THANK YOU



Harold Moyer has put a lot of sweat and time into perfecting our easels with braces as well as constructing frames for our five roadside SHOW direction signs. THANKS, Harold so very much for your efforts!

JULY AUCTION RESULTS

Darvin Rodgers, our auctioneer, Bud Heim and Jere Greider runners, Walter Mowrer our cashier and Charlie Griffiths and Jim Ward the cataloguers all deserve our THANKS for another great job.

Gross \$430. - \$8 (donated lots #95,96) = \$422. \$42.20 (10%) + \$8 = \$50.20 to LCPC.

Lot # followed by price realized.

1 2	22 15	42 2.5	62 3	87 2
2 2	23 17.50	43 1	63,64 1.50	88 3
3 1	24 2	44,45 3.5	65 1	89 1
4,5 2	25,26 3	46 17.50	66 1	90 2
6 1	27 7	47 4	67,68 2	91 1.50
7 1	28 16	48 2	69,70 2.50	92 1
8,9 1	29 21	49 3	71,72 1.50	93 17
10 1	30 9	50 21	73 6	94 4
11 7	31 9	51 3.5	74 1	95 3.50
12 4	32 3.50	52 2	75 2	96 4.50
13 5.50	33 4	53 1	76 4	
14 3.5	34 5	54 1	77 1.50	
15 2	35 4.5	55 3	78,79 6.50	
16 4.5	36 3	56 1.5	80 3	
17 1.5	37 32	57 4	81,82 .50	
18 12	38 4	58 2	83 2	
19 2	39 9.5	59 5	84 6	
20 15	40 3.5	60 3	85 9	
21 3	41 9.5	61 4	86 6	



JOHN KLEIN TO OCCUPY DAN'S OLD PC STAND

Member #34 **Nancy Gambler** will serve us cards for the final week-end on August 15 under the employment of the **Dan Good** estate. Thereafter we can find another fellow member with lots of postcard inventory, member #247 **John Klein**. John is a familiar face to those of us who've been attending Morlatton shows for many years. He'll also sell at our first show this month (see Dealer Listing).

It's a comfortable feeling knowing we can still find good local cards as well as a variety of greetings at one of our favorite local 'haunts'. And **John** is noted for reasonably priced cards in all categories.

Stop by and wish him well!

FIRST ANNUAL
LANCASTER POSTCARD EXPO 1993
sponsored by the
LANCASTER COUNTY POSTCARD CLUB



Saturday, August 21, 1993
9 AM to 6 PM

FARM & HOME CENTER
1383 Arcadia Rd. off Manheim Pike (Rte. 72)
Lancaster, PA

25 DEALERS

100 EXHIBITS

DOOR PRIZES, FOOD, FREE PARKING, AIR CONDITIONED, NO STEPS!
\$1.50 adm., \$1 with this card

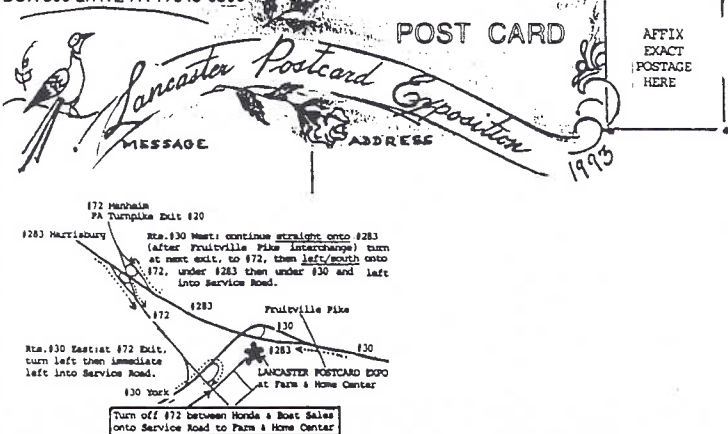
FOR THE RECORD

Years from now someone will wonder about these little advertising postcards for our first show. We printed and distributed 5,000 in white w/PC backs on card stock; another 1,000 on white paper; 500 of a pink paper version w/o a PC back; and 100 11"x17" on heavy gold stock for store windows (no back).

Design by **J. Rudisill**, copy by **J. Ward** with Show Committee approval.

70% actual size

BOX 300 LITITZ PA 17543-0300



MEMBER-DEALERS AT LANCASTER POSTCARD EXPO

If you over-looked the first listing in the April issue of **THE CARD**, here's a recap of the friends we'll see on Aug. 21. A program will be available at the door. It includes a **floor lay-out** of the dealer tables. Your \$1 admission also entitles you to a ticket number eligible for **door prizes** to be given during the show.

Your **Show Committee** has tried hard to give you a good show this first year. Try hard to attend and support their effort - and bring friends - introduce them to your favorite hobby!

1 Neal Boyle -	Delaware
2 Agnes Cavalari -	New York
3 John Corliss -	Maryland
4 Lee Cox -	Maryland
5 Roy Cox -	Maryland
6 Nancy Foutz -	New York
7 Marilyn Gottlieb -	New York
8 Donald Kaye -	Ontario, Canada
9 John Klein -	Pennsylvania
10 Ken Kolb -	Delaware
11 Karl Korzeniewski -	Ohio
12 Mary Kurey -	New York
13 Jim Luty -	Pennsylvania
14 Peter Maronn -	Connecticut
15 Jay Miller -	Pennsylvania
16 Jim Morrison -	Maryland
17 Susan Nicholson -	Illinois
18 Jose Rodriguez -	Connecticut
19 Dolores Rowe -	Pennsylvania
20 Chris Russell -	New Hampshire
21 Dede Schaeffer -	Pennsylvania
22 Fava Sherrard -	Maryland
23 Don Skillman -	Ohio
24 Don Wachter -	Maryland
25 William Wolfersberger -	Virginia

STEEL FILE (52"Hx17"Wx27"D) with 9 drawers.
Holds up to 18,000 PCs. Will trade for PCs
or \$65. Can deliver. J. Ward, Box 300, Lititz PA

RIBBONS READIED FOR EXPO BOARDS

"Award ribbons have been printed" announced Exhibit Chairman **Charles Griffiths** at the July Show Committee meeting.

"There are FIRST, SECOND and THIRD PLACE ribbons for each of the five categories: **Old, Linen, Chrome/Modern, Local** and **Greetings/Holidays**. BEST OF SHOW will be chosen from the FIRST PLACE winners by the Judges.

"The public" **Charlie** went on, "will be able to vote for their personal choice by paper ballot. All Show visitors may vote - whether members or not, for any exhibit they like best. Ballots will be tabulated before the Show's end and a PEOPLE'S CHOICE ribbon will also be awarded."

The Show Committee has advertised there will be 100 exhibits for the public to see. This is the first time postcard boards have been exhibited in Lancaster for many years, so let's make our first show a really fine one - one that will put a mark on the Lancaster community as the place to go to see POSTCARDS as well as buy them, sell them and trade them.