

# The Card

MONTHLY PUBLICATION OF  
LANCASTER COUNTY POSTCARD CLUB  
LANCASTER, PENNSYLVANIA

MEETINGS: 3rd MONDAY  
FAITH UNITED  
CHURCH OF CHRIST  
1204 WABANK STREET  
LANCASTER, PA

Oct. 1993 - Vol.4, No.10

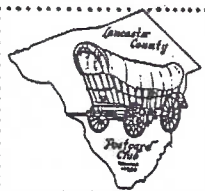
## NEXT MEETING

October 18, 1993 7 pm  
Buy/Sell/Trade 6 pm

Yearly membership is \$7 (plus \$3 per person, same address).

Articles and correspondence to: P.O.Box 300, LITITZ, PA.

17543-0300. Ads: \$15 full pg., \$8-1/2 pg., \$5-1/4 pg. prepaid.



## NEW MEMBERS

#293 **THOMAS CANNON** 360 Forest Cr., Danville, VA., 24541. Area 804-791-3678. Collects Danville, Chatham and Schoolfield, VA. & VA. Tech.

#294 **CLARENCE ARMBUSTER** 1616 Liberty St #801 Allentown, PA., 18102. No phone listed. Pre-1930 Allentown, storefronts, interiors, fairs, carnivals and theaters.

#295 **BILL HEADLEY** RD1, Box 209, Cochranville, PA., 19330. Area 215-593-6600 (6656). Atlantic City, Halloween, blacks, Indians, fantasy (elves and fairies) and hold-to-lights.

#296 **LYNNE HEADLEY** Same as Bill EXCEPT she collects: early holidays with emphasis on Christmas and New Year; copper windows; some dogs and horses.

We heartily welcome these folks and note that all of them signed up with us as a result of attending our first expo. Ain't that neat?

#296 - 60 (attrition) = 236 actual members!



## EXHIBIT WINNERS



SMORGASBORD as its name implies, brought forth a variety of exhibit boards in Sept. and 57 members voted two ties! Revoting resulted with the following winners. (Explanations of exhibits are included where the title lacks sufficient description for members who weren't present.)

<b>ANNE STEINBERG</b>	FIRST	It's A Boy!
<b>BARB MOWRER</b>	SECOND	Columbia Bridges
<b>DOT FRY</b>	THIRD	H.C. Andersen

(scissors cuttings by Hans C. Andersen)

### HONORABLE MENTIONS

<b>BETTY BROWN</b>	Black Borders, 1993 (Amish)
<b>EARL CARVER</b>	Cocky Colorful Pheasants
<b>DON DAVIS</b>	Tom Browne (comics)
<b>FRAN HAMILTON</b>	Classics (automobiles)
<b>HAROLD MOYER</b>	Spanish Folks (silks)
<b>JIM WARD</b>	It's In The Stars (zodiac)

It's good to see this broad topic produced several new exhibitors. More easy sub-

Grüß Gott!



This hobo or tramp may appear poor, but he certainly carries all the comforts of home! Published by CAES? (upright oval) Dresden. Mailed from Mosel, Ger., Aug. 8, 1911 to Mass.

"God's Greetings". Everything you ever wanted to know about hoboes in our featured article pages 2 and 3.

jects are on tap:

October - **ANIMALS** (Birds are NOT vegetables)

November - **ANYTHING BEGINNING WITH THE LETTER "P"** (Paddle steamers, painters, pansies, parrots, pawnbrokers, penguins, photographers, pianos, Pierrots, piers, pigs, pipes, playing cards, policemen, politics, Presidents, processions, propaganda and puzzles) SASE for more!



## FUTURE PROGRAMS



OCTOBER - Auction. See addendum.

NOVEMBER - Jose Rodriguez To be announced.

Diane Allmen, our favorite Indiana member/dealer, will be with us in November and have her usual stock of thousands of unused Dexter linen postcards and modern chromes.

DECEMBER - Jim Morrison (slide presentation) plus Annual Christmas Party.



## HO! BEAU!

Daniel Webster says a 'beau' is a man greatly concerned with his personal appearance and with fashion. And that 'hobo', an Americanism, derives from a call of greeting between vagrants. So **hoboes** (perhaps with tongue-in-cheek), called themselves by that name first!

**Vagrant** and **vagabond** come from the Latin 'vagans' = wandering. (And an extravagant person wanders beyond his means!) **Bum** may derive from the German 'bummler' = idler, loafer.

Depending on your personal past encounters or your present political posture, you may wish to call them **bums**, **hoboes**, **tramps**, **vagrants** or **unfortunates**. The reality in OUR POSTCARD WORLD is they can be found with a little effort - particularly on comic PCs.

The well-attired ladies are decorating our **hobo** with many, many marguerites... far more than his little 10 pfennig piece could ever buy. "Greetings on Marguerite Day"



Gruss vom Margueriten-Tag.

## 2 Gentlemen



M.Trübe



↑ One of a series by an unknown publisher. Gray background with red, white and black.

← "2 Gentlemen" signed M.Trübe. Published by Albert Ebner, Munich. Address side reads "Weltkrieg Postkarte" (World War Postcard).



Hoboes, in the past, were treated with the same degree of kindness or cruelty as any other class of people. With lawyers in the back pocket of so many these days, however, you'd be pressing your luck to actually call someone a hobo and expect to get away with it. (When's the last time you heard a person referred to as 'convict' or being sentenced 'to hard labor'?)

Anyhow, hoboos are a fun topic on postcards and we offer you samples from all the postcard eras.

In the heyday of the hobo, a secret language existed. Scratched on fences, chalked on sidewalks, it warned one's companions of dangers, advised of friendly hosts, a free meal or a soft touch. These are just a few of many that were popular.

Before you give this article the bum's rush study the HOBO SIGNS. They make sense!

## HOBO SIGNS



Dangerous neighborhood.



Hit the road - quick!



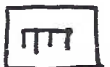
Good place for handout.



Well-guarded house.



You can sleep in hayloft.



Vicious dog here.



Kind lady - tell pitiful story.



Man with gun lives here.



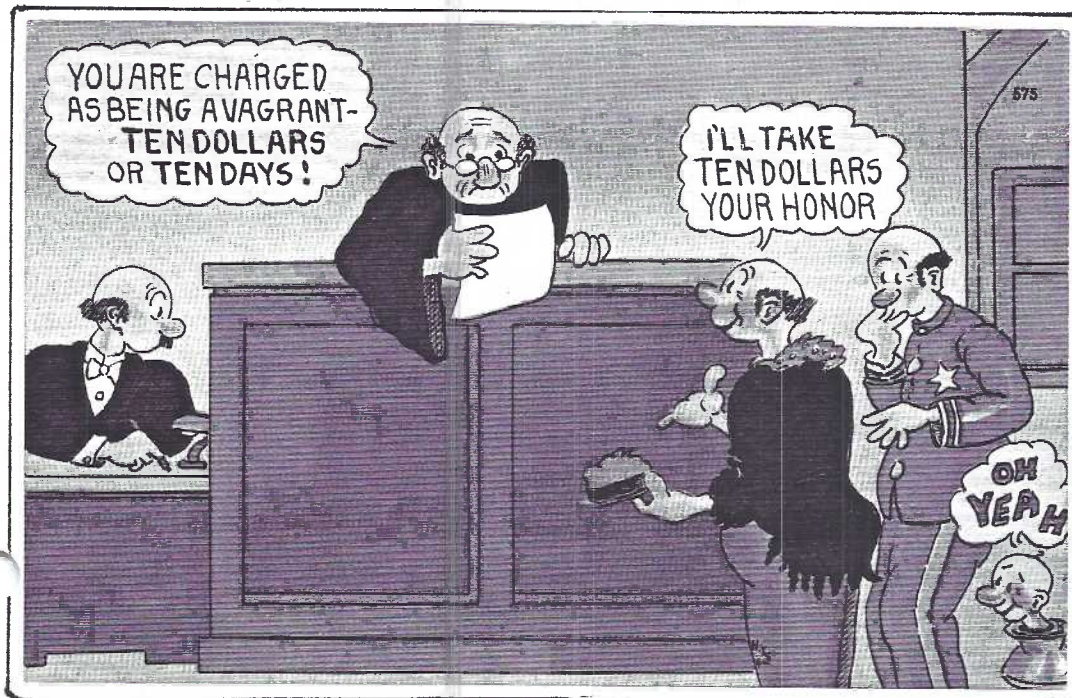
Authorities here are alert.



Good place to catch a train.



Another unknown German publisher, but who cares? "Happiness in a Corner" tells it all. A hobo with no less than 2 flowers, cigar, sausage, watch, cane, frog, bird, butterfly and 2 mice!.....content in dreamland!



Tichnor's colorful linen #74928 is ripe with the snappy humour of the era. Is the spittoon gent a self-portrait of the artist?



# For Hallowe'en.



"Old Style and New"

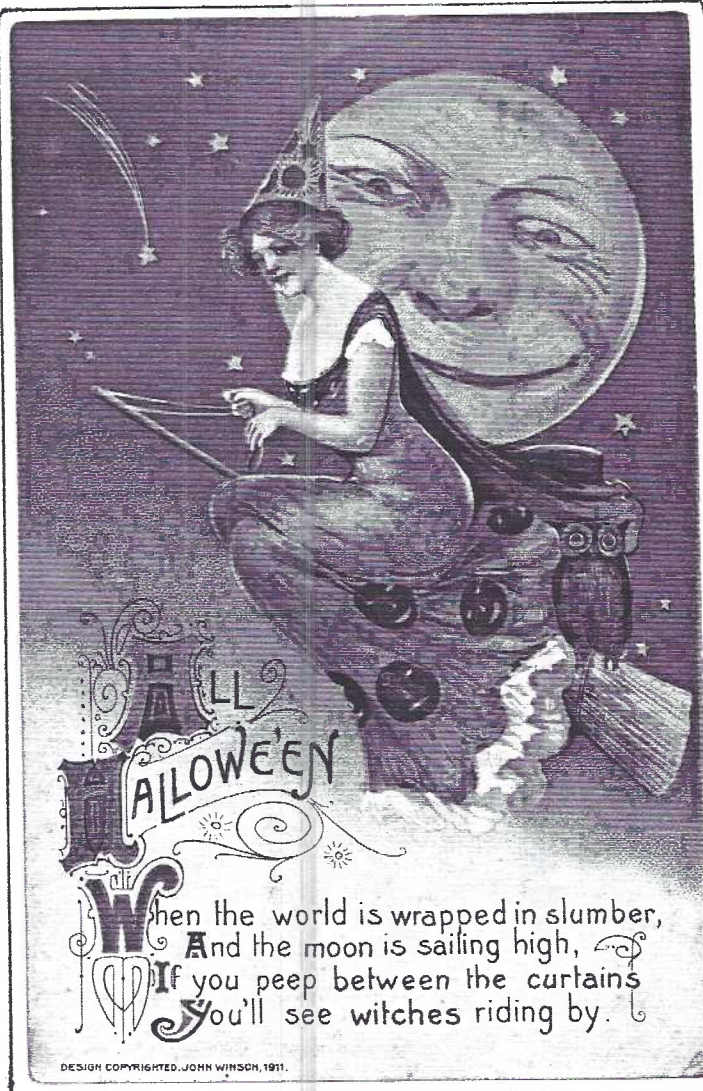
Ellen H. Clapsaddle

## Hallowe'en Greeting



Out of the kettle will come for you  
Good luck and other good things, too!

## WHICH WITCH WILL YOU CHOOSE?



A

B

- A International Art Publ.Co.series #4439 by Ellen Clapsaddle.Brilliant reds and blues.
- B John Winsch Co.,1911. Mailed in 1911 from DuBois,PA..."colder than Greenland up here" Multicolored gown,sulfur moon and teal sky.
- C Metrocraft PC Co., series #1133,6 designs. Bright orange w/black on white background.

## FUTURE SHOWS



- OCT. 3 **WINDGAP** Lehigh Valley PC Club.  
9 to 4.\$1 adm.
- OCT. 9 **JOHNSTOWN** Greater J-town PC Club  
10 to 5 \$1. adm.
- OCT. 22-23 **TIMONIUM,MD** Monumental PC Club.  
10-7 and 10-4 \$1. adm.
- NOV. 6 **BELMAR,NJ** Jersey Shore PC Show.  
9 to 4. Free adm.
- NOV. 19-20 **YORK** York International PC Fair  
9-7, 9-5. \$2. adm.
- NOV. 26-27 **LANCASTER** Morlatton PC Club.  
10-6, 10-5. \$1.50 adm.

C

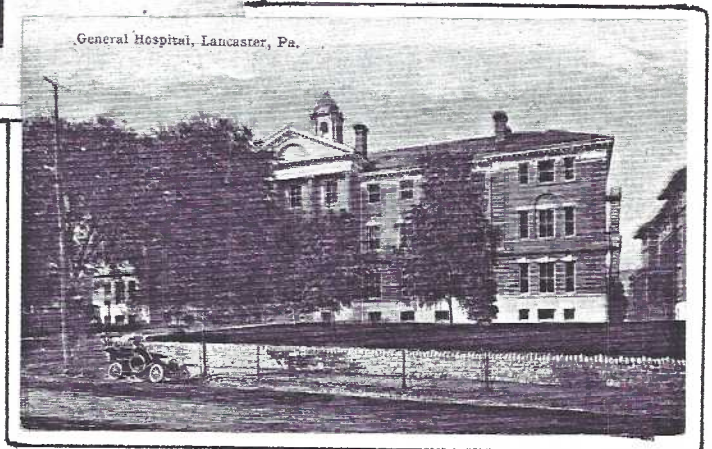




LANCASTER, PA.

In a small three-story dwelling at 322 North Queen Street, **The Lancaster General Hospital** opened its rooms to "all persons regardless of creed, sex or color" in 1893.

The growth of "The General" for the past 100 years reflects the growth of Lancaster, itself. Our interest is in the General as it can be found on postcards (more than 20 different published cards - see check list) - **at least 14 different views!** Amazing as this may seem, remember postcards mailed by guests and visitors were a major item at the hospital's newsstand which evolved into the large gift shop.



General Hospital, Lancaster, Pa.  
Miniature.1 of 10 in env. by Nat'l.PC Co.

Albertype b/w,un/back #3 for H.S.Williamson

## Chronology of building at Lancaster General

- 1893 Existing 322 North Queen St. purchased
- 1896 530-32 N. Lime St. replaces Queen St.
- 1898 Dispensary added at Lime Street.
- 1903 New (north) wing at Lime Street.
- 1905 Main (central) Lime St. wing completed
- 1910 Women's (south) wing added on Lime St.
- 1912 Lime St. nurses' residence completed.
- 1921 New central wing and service bldg.
- 1928 Nurses' home towed to Lime & Frederick!
- 1929 New maternity wing.
- 1952 North Duke St. building completed.
- 1959 Three floors added to Duke St. bldg.
- 1967 Seven story bldg. replaces Lime St.
- 1970 Ten story north wing completed.



Real Photo - Memorial Day at Nurses' Home. Uncancelled, but written dates on card are 1915 to 1917.



# GENERAL HOSPITAL - LANCASTER, PA.

Published postcards

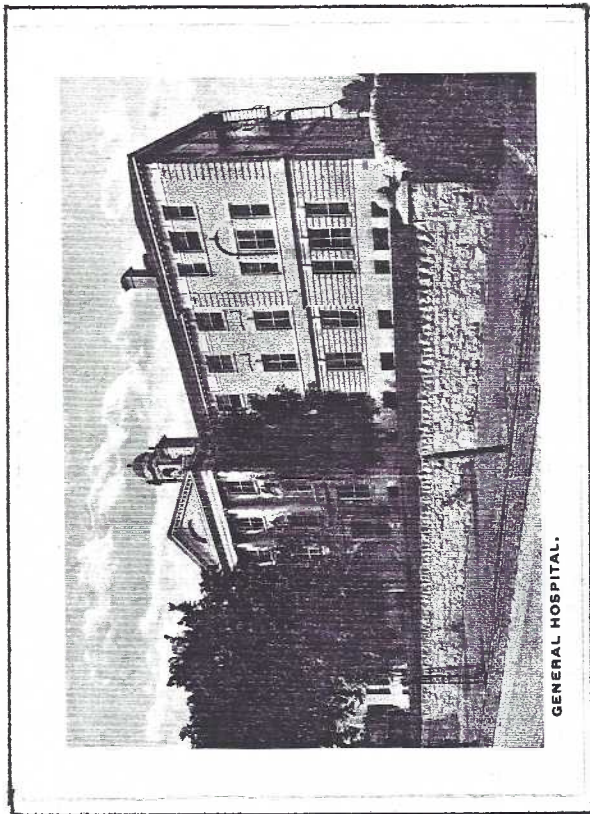
Compiled by Chas.W.Griffiths. Additions are invited.  
H=horizontal,V=vertical format (...).caption on address side

- Albertype for H.S.Williamson
- No.3 H General Hospital
- American News Co.
- AL960 H General Hospital
- A6689 H General Hospital
- Colourpicture Publishers Inc.
- PL2153 H (Lancaster General Hospital)
- Commercial Colortype for I.Steinfeldt
- 33765 H General Hospital
- A.M.Deichler
- H General Hospital
- Dexter Press Inc. for Jas. E. Hess
- 80698-C H (Lancaster General Hospital) driveway,flag
- 80699-C H (Lancaster General Hospital) entrance sign
- Dexter Press Inc. for King Novelty
- 27959 H The General Hospital DL3
- L.B.Herr Print
- H Lancaster General Hospital
- Leighton & Valentine or Valentine & Sons
- 203140 H General Hospital
- Valentine & Sons or Valentine - Souvenir
- 221072 H General Hospital and Nurses' Home
- National Post Card Co.
- H General Hospital
- H General Hospital (3 1/2"x 2 1/8") 1 of 10
- in enveloped set, unnumbered, without border

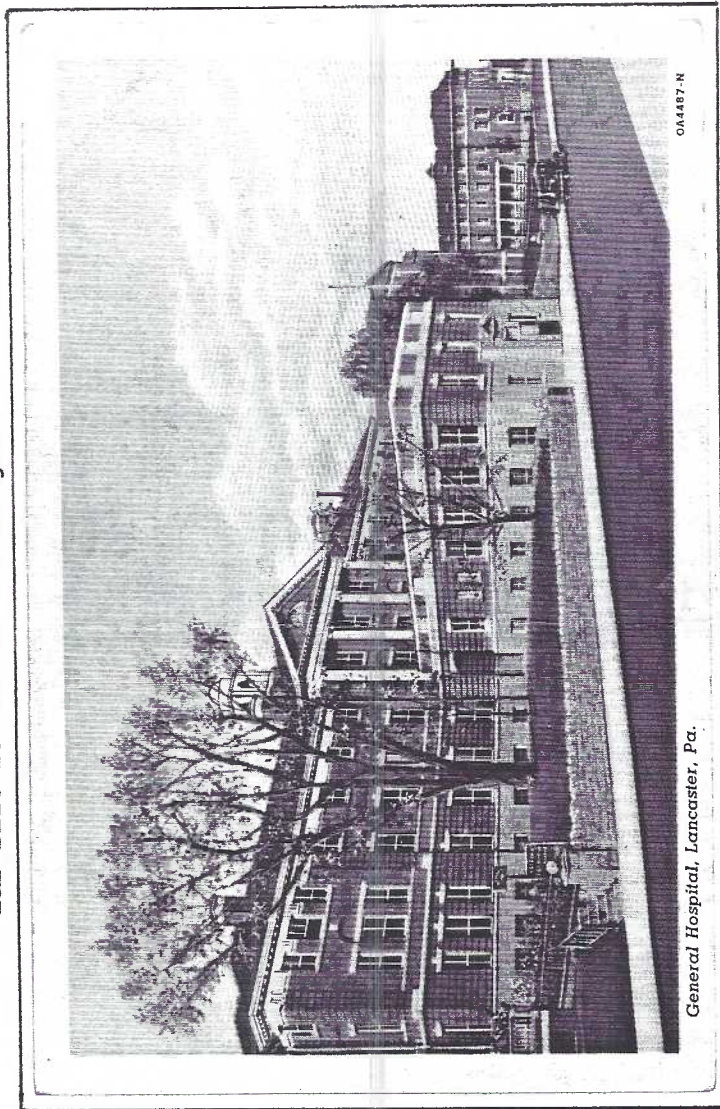
## The Rotograph Co.

- 2690a H General Hospital
- Curt Teich & Co.for various publishers
- 14391 H General Hospital (also in reg.and sm. folders)
- 91112 H General Hospital
- OA4487 H General Hospital
- 3C-H686 H The Lancaster General Hospital
- 3C-H688 H The Lancaster General Hospital /'out' driveway
- Tichnor Bros. Inc. for Jas. E. Hess
- K-2196 H (General Hospital)
- Tichnor Bros. Inc. for Morrison Bros.
- 133849 H Lancaster General Hospital(Nurses Home in foreground...)
- Unknown /dark sepia type
- 5413 H General Hospital
- Unknown for Watt and Shand
- H General Hospital
- /thick,angular "Post Card"

NOTE: Real photo PC also seen,pencil identified,showing "Memorial Day" crowd near nurses' residence on original site (before 1927). Estimated date is 1915-17.

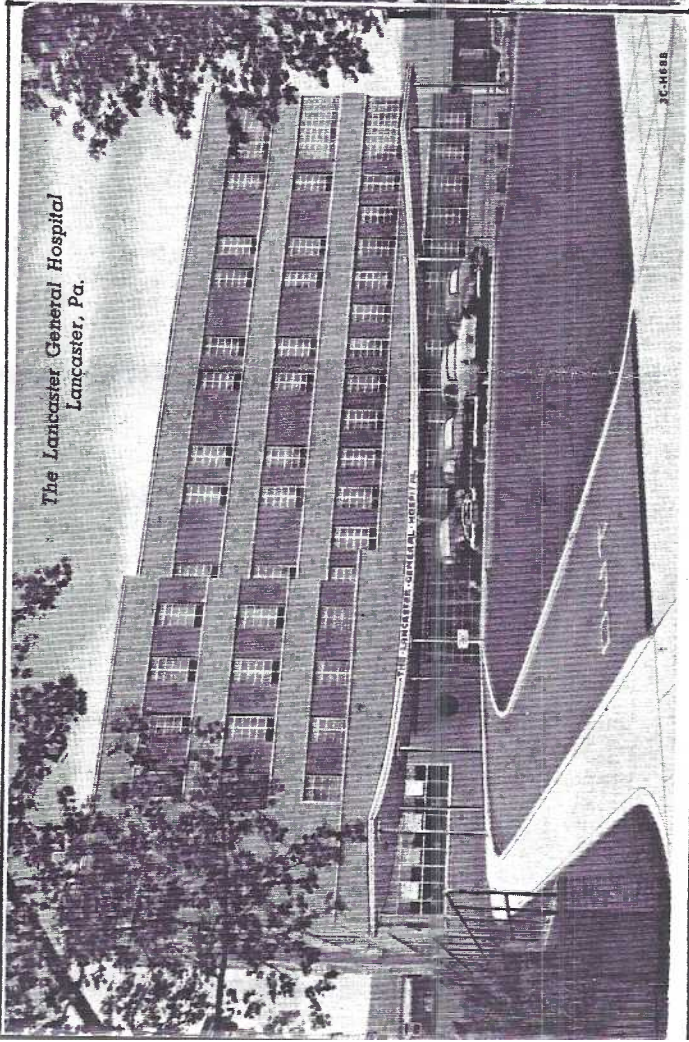


Actual size from a miniature folder with 17 other views by Curt Teich.It appears in regular size folder as well.Single PC is #14391



Curt Teich linen card for I.Steinfeldt,Lancaster, #OA487-N. Identical view is on CT #OA487.Also on Colorcraft by Dexter #27959 for King Novelty Co.,Lancaster.





A.

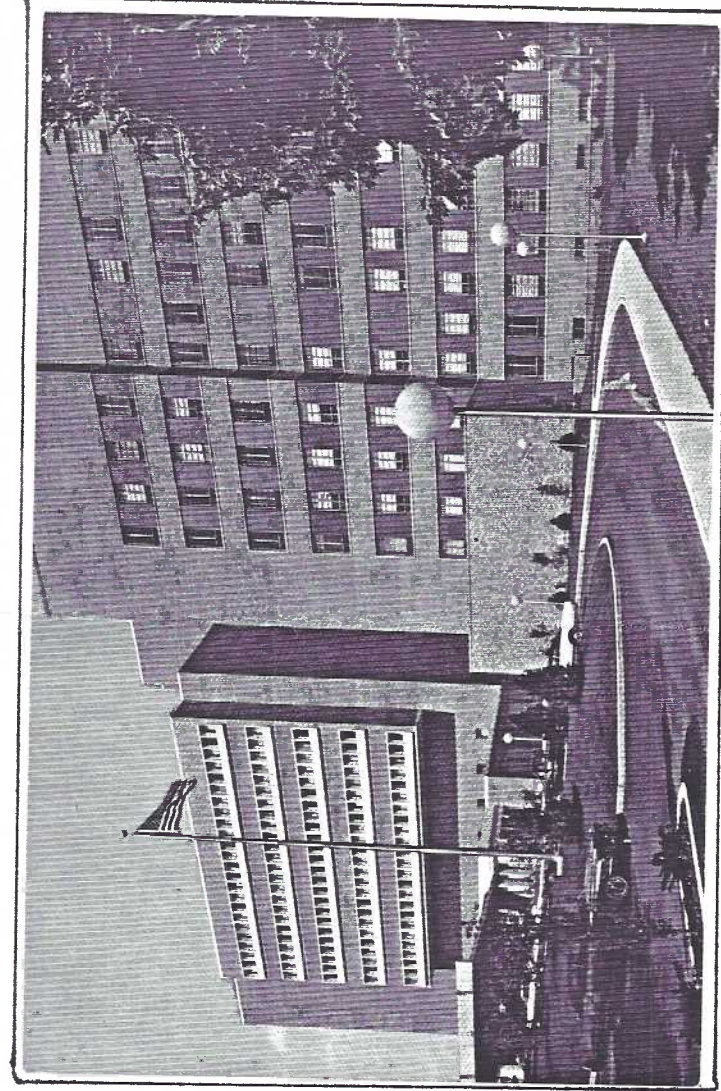
A. Linen by Curt Teich for I.Steinfeldt,Lancaster #3C-H688.

B. Chrome by Colourpicture Publ.,Inc. for Mehl Adv. Service,York. #P12153.

C. Chrome by Dexter Press,Inc. for James E. Hess,Lancaster. #80698-C.

Chrome postcard B was produced before the additional floors were added in 1967, showing us just how old chrome postcards are!

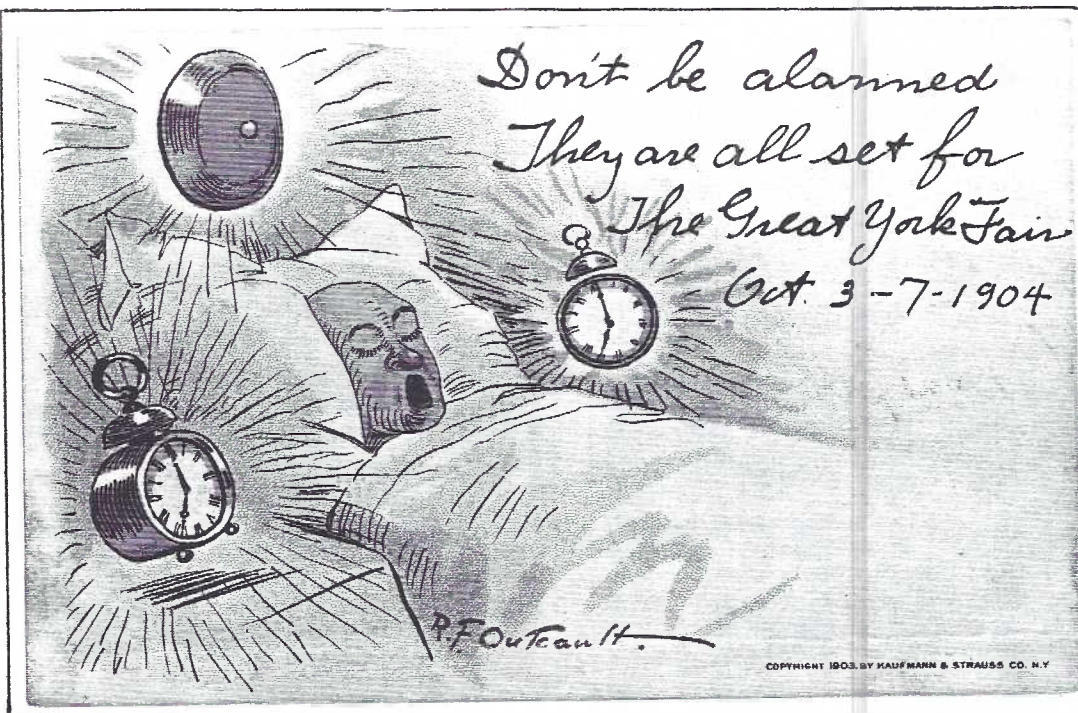
B.



C.

A fine centennial book of 133 pages 100 YEARS OF CARING is available at better book stores and the hospital gift shop. The history is a perfect reference. Unfortunately an overpaid 'arty' somebody was put in charge of the illustrations and the half-tones lost 90% of their value. They are unnecessarily tiny and gold-tinted! Ugh!! JFW





LCPC MEMBERSHIP ROSTER enclosed with Oct. CARD unless your pick-up one at the meetings.

We celebrate FAIR SEASON this year with this great Outcault und/back PC used by the Great York Fair Committee. (Fairs are in September now.) The sender found it unnecessary to write on the face of the card. The message said it all. Cancelled from York, 7:30 pm, 9/16/04, it's received cancel is 9 am, 9/19/04 in Royal Oak, Michigan.

Outcault is noted for his Buster Brown advertising PCs, Buster's Bubble (auto) and several scarce early comic strip convention cards with Buster and the Yellow Kid.

THE CARD STAFF  
Artist Jim Rudisill. Proofreader, Indexer, Now and Then Columnist, Info. Contributor and Mentor Charlie Griffiths. Editor (the buck stops here) Jim Ward. All correspondence to P.O. Box 300, Lititz, PA 17543-0300.

### SYMPATHY

LCPC wishes to extend sympathy to **Walt Mowrer** who lost his father in September as well as **Becky Buckwalter** and **Dottie Bock** who lost their father and husband respectively.

Please contact the editor when you know of other members' losses or if a member has a serious illness. Certainly the latter instance would be an excellent time to communicate with a postcard or two.

### 1994 LCPC POSTCARD CALENDARS

Our third edition Calendar with postcard scenes is available for \$6. (\$1 postage for up to 3 calendars.) A few '92s and '93s are available for the issue price of \$5 ea. EACH YEAR HAS DIFFERENT SCENES. THERE IS NEVER DUPLICATION so even the back issues make fine gifts! Every year begins with November, giving you 14 months each!

The '94 edition contains 62 great cards including 8 holidays and full-color covers, plus all the PCs published by LCPC and a resume of LCPC all for \$6. Only 300 printed.

## POETRY

Books, Gifts and  
Accessories

By D. V. ALLEN

- Postcards • Flying Discs •
- Jar Openers •
- Contemplation Cards® •

For Free Brochure, Write:

D. V. ALLEN  
THE POETRY ADOOBE  
1818 Redwood Court  
Forest Grove, Oregon

Paid Adv.

97116-2139



Addendum to October 1993  
issue of THE CARD

# LANCASTER COUNTY POSTCARD AUCTION #14

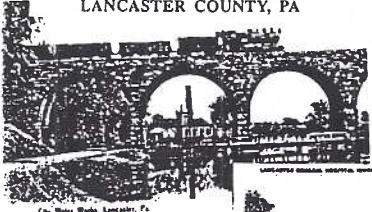
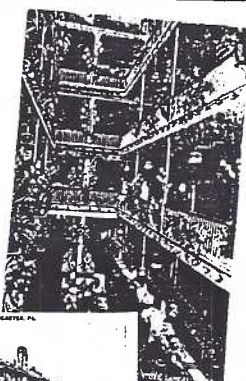
Following business meeting. All items are postcards unless stated.

Examine carefully. u=used, un=unused, RP=real photo PC, cc=continental chrome



- |       |    |   |    |   |       |
|-------|----|---|----|---|-------|
| 5.00  | 1  | 4 Nursery rhymes u                          | 50 | 54 Hotels: old, linen, chromes, 95% un      | 5.00  |
| 1.00  | 2  | 8 Sunday School cards un                    | 51 | 40+ Mostly ladies and children u/un         | 5.50  |
| 1.00  | 3  | 10 Art cards: Wyeth, Grnd. Moses, etc. u/un | 52 | 40+ same as above                           | 6.00  |
| 1.00  | 4  | 10 Gettysburg + view folder un chromes      | 53 | 36 Linens, mostly un                        | 2.00  |
| 3.00  | 5  | 16 Florida u/un                             | 54 | 88 Chromes, mostly un, some dups. + 15 cc   | 2.50  |
| 1.00  | 6  | 12 New England u/un chromes                 | 55 | 35 Linen comics u/un                        | 6.50  |
| 1.00  | 7  | 15 New York (city and state) un             | 56 | 35 Old comics u/un                          | 9.50  |
| 5.00  | 8  | 15 Christmas u                              | 57 | 50 Sheep u/un                               | 4.00  |
| 1.00  | 9  | 8 Embossed: flowers, birthdays un           | 58 | 50 Horses u/un                              | 13.00 |
| 1.50  | 10 | 15 Floral greetings, mostly PA. u           | 59 | Tuck Set/25 Presidents, un (5 stained)      | 37.50 |
| 1.00  | 11 | 3 Allentown un                              | 60 | Album 126 greetings, pre-1920 views u/un    | 8.00  |
| 5.00  | 12 | 4 Ephrata: Mt. Springs hotel, cloisters un  | 61 | Album 56 Portugal                           | 7.00  |
| 2.00  | 13 | 3 Lancaster: courthouse, F&M, Wheatland un  | 62 | Album 136 Switzerland                       | 16.00 |
| 1.00  | 14 | 4 Marietta: school, streets b/w, un         | 63 | Album 140 Italy                             | 8.00  |
| 2.00  | 15 | 10 Falls un                                 | 64 | Album 108 Ireland, Germany                  | 11.00 |
| 7.00  | 16 | 7 Flowers in Nat'l. Parks un                | 65 | Album 159 Holland, Belgium                  | 5.00  |
| 1.00  | 17 | Forbes Field, Pittsburgh 1952 un. linen     | 66 | Album 64 Japan                              | 12.00 |
| 2.00  | 18 | 10 Restaurants un                           | 67 | 4 Shaub & Burns (Lanc.) trade/adv cards     | 3.00  |
| 2.50  | 19 | 14 Rock City, Lookout Mt., TN un            | 68 | 6 Silhouettes from Holland un               | 2.00  |
| 2.00  | 20 | 4 County chromes                            | 69 | 40 Lancaster Co. views, mostly linen, u/un  | 16.00 |
| 1.00  | 21 | 25 un 1972 6¢ gov't. postal cards           | 70 | 5 Lancaster, 1 Santa Cruz, 1 L. Geneva dbl. | 6.00  |
| 2.50  | 22 | 10 un 6¢ Paul Revere gov't. postal cards    | 71 | Album 134 greetings, views, comics + more   | 47.50 |
| 1.00  | 23 | The Lord's Prayer, set of 8                 | 72 | Unopened carton 1,000 PC sleeves            | 10.00 |
| 9.00  | 24 | Faith, Hope and Charity (Ger.)              | 73 | 13 Am. Bald Eagles, chromes                 | 8.00  |
| 12.00 | 25 | Faith, Hope, Charity and Purity (framed)    | 74 | Album 78 trains, depots, streetcars         | 67.50 |
| 13.00 | 26 | 150 Coral Lee: Carter and Reagan adm.       |    |   |       |
| 13.00 | 27 | 35 Children                                 |    |   |       |
| 4.00  | 28 | 6 12 card Coral Lee sets: Carter adm.       |    |   |       |
| 10.00 | 29 | Transparency: Father Christmas              |    |   |       |
| 1.00  | 30 | 6 Misc. greetings                           |    |   |       |
| 3.00  | 31 | 6 Valentines, misc. greetings               |    |   |       |
| 1.00  | 32 | 6 Birthday                                  |    |   |       |
| 4.50  | 33 | 6 New Years, some Winsch                    |    |   |       |
| 3.50  | 34 | 5 Winsch Thanksgiving                       |    |   |       |
| 1.50  | 35 | 3 Winsch " (2 Indians)                      |    |   |       |
| 2.00  | 36 | 6 Misc. greetings                           |    |   |       |
| 2.50  | 37 | 6 Easter                                    |    |   |       |
| 3.00  | 38 | 6 Easter, some Winsch                       |    |   |       |
| 2.00  | 39 | 6 Valentine greetings                       |    |   |       |
| 2.00  | 40 | Happy Hooligan u.db                         |    |   |       |
| 3.50  | 41 | 10 Easter                                   |    |   |       |
| 24.00 | 42 | 10 Easter                                   |    |   |       |
| 6.50  | 43 | 10 Lovers                                   |    |   |       |
| 5.00  | 44 | Lancaster Fair - 1910                       |    |   |       |
|       | 45 | 10 Niagara Falls                            |    |   |       |
|       | 46 | Real photo: Lanc. Bethany Presb. Church     |    |   |       |
|       | 47 | 5 PA. turnpike                              |    |   |       |
|       | 48 | 12 Flowers                                  |    |   |       |
|       | 49 | 6 Thanksgiving                              |    |   |       |

## 1994 CALENDAR

featuring reproductions of old postcards  
LANCASTER CITY &  
LANCASTER COUNTY, PA

14 MONTHS!  
NOV. 1993  
DEC. 1994

sponsored by the  
LANCASTER COUNTY  
POSTCARD CLUB  
meetings: 3rd monday ea. month  
Faith United Church of Christ  
1204 Wabank Rd., Lancaster, PA  
PUBLIC ALWAYS WELCOME!

62  
OLD  
POST  
CARDS

PICK UP YOUR CALENDARS IN OCT.  
PAY FOR THEM WHEN THEY'RE SOLD

As we did last year, members may take calendars on consignment and pay for them at the end of 1993. Showing the calendar to friends and relatives is the easiest way to sell it. They make great gifts, too!

Full color covers, 62 postcards plus 5 LCPC postcards plus a resume of our club=\$6



2

11

2

11

11

0