

The Card

MONTHLY PUBLICATION OF
LANCASTER COUNTY POSTCARD CLUB
LANCASTER, PENNSYLVANIA

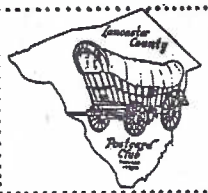
MEETINGS: 3rd MONDAY
FAITH UNITED
CHURCH OF CHRIST
1204 WABANK STREET
LANCASTER, PA

Feb. 1994 - Vol. 5, No.2

NEXT MEETING

February 21, 1994 7 pm
Buy/Sell/Trade 6 pm

Yearly membership is \$7 (plus \$3 per person, same address). Ads: \$15 full page., \$8-1/2pg., \$5-1/4pg. prepaid. Articles and correspondence: 1795 Kleinfeltersville Rd., Stevens, PA 17578 Dues and General Correspondence to: LCPC c/o Mowrer, 786 Kames Hill Rd, Columbia, PA, 17512.



OOPS!

EXTREME WEATHER CANCELS MEETING

First Time in Club's 4-Year History

It should have been LCPC's Fourth Birthday Party (we organized Jan. 22, 1990). It should have been our 15th Club PC Auction. It should have been a night of Comic Postcards in our monthly exhibit board competition.

But a severe snow storm, impossible driving conditions and good common sense told newly installed Pres. **Walt Mowrer** to cancel earlier that morning. Acting Publicity Chairman **Earl Carver** had the news on the noon-time report; more reasons why LCPC runs so well: excellent judgment and cooperation.

So-o-o-o, expect all of the above at February's meeting: a Birthday Cake; Comic Exhibit Boards and an Auction (bring along your January list).

NEW MEMBERS

#312 **JOHN J. VIERRA, SR.** 15 Liberty Ave., Gray ME., 04039. Collects Winsch, Real Photos, Baseball, etc. John is a popular Down East dealer
#313 **JEFFREY T. REYNOLDS** HC63 Box 37 E. River Rd., Huntington, MA., 01050. Main interest: postcards dealing with the Amish. Welcome, Jeffrey. The Amish PC Painting story was pasted up before we heard from you - what a coincidence!

SHORT TERM VOLUNTEERS

Pres. **Mowrer** needs a member to send the notice to the media of our monthly activities. If you can serve for just the first six months, he'd be happy for that much help

Also, he'd appreciate someone taking over the auctions - at least until his term expires. What did **you** do for LCPC in 1993?

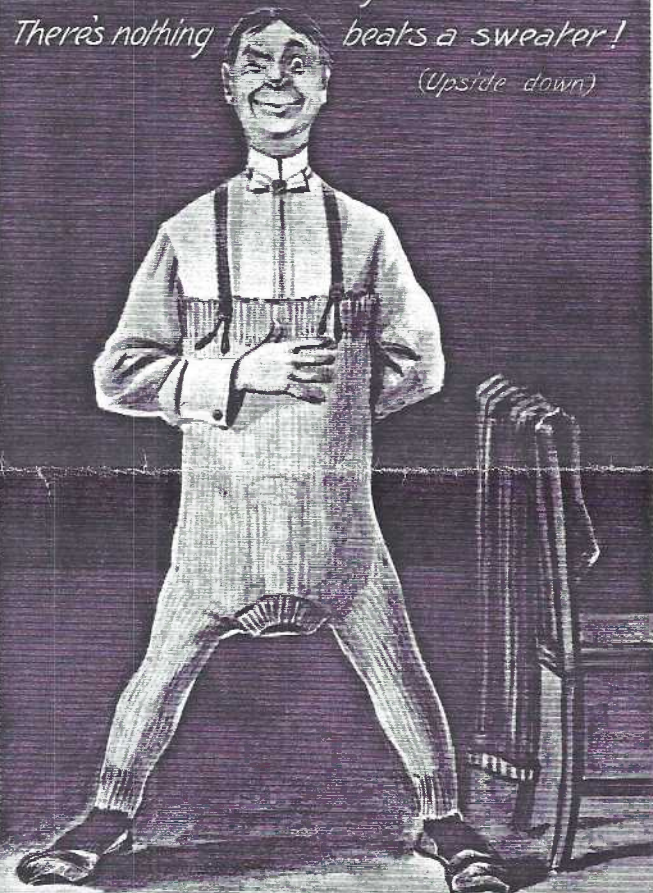


Published By George V. Millar & Co., Scranton, Pa.

The Driver Boy's Friend.

These happy dirty-face youngsters belie the rigors suffered by the **Breaker Boys**. See feature story inside. George V. Millar & Co., Scranton, PA published the b/w, u/b card, but is it really a scene in Pottsville, PA?

*For cold and chilly weather,
There's nothing beats a sweater!
(Upside down)*

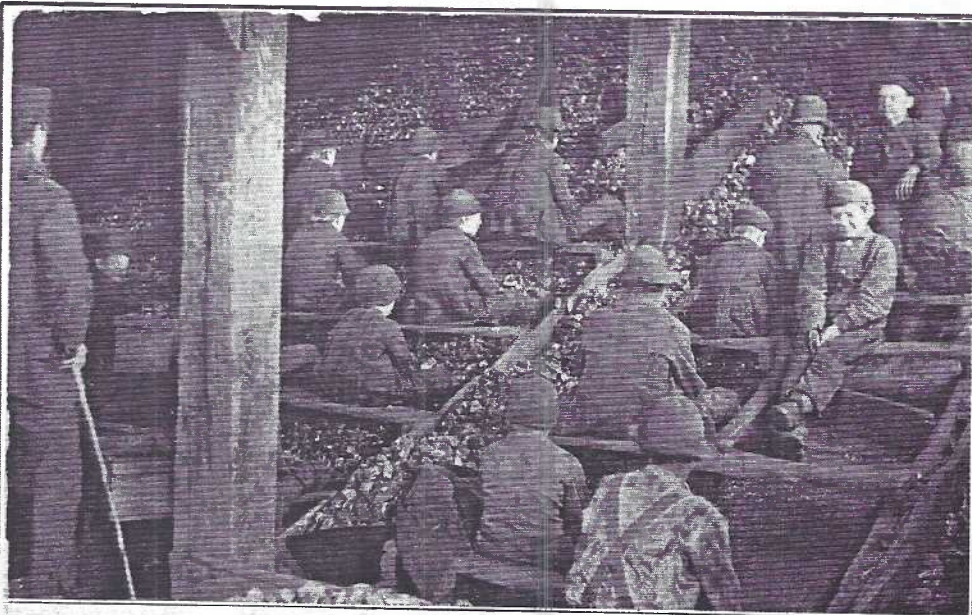


"Necessity is the mother of invention!"

Monthly Grin on a British Milton Post Card, "Chic" Series #608.

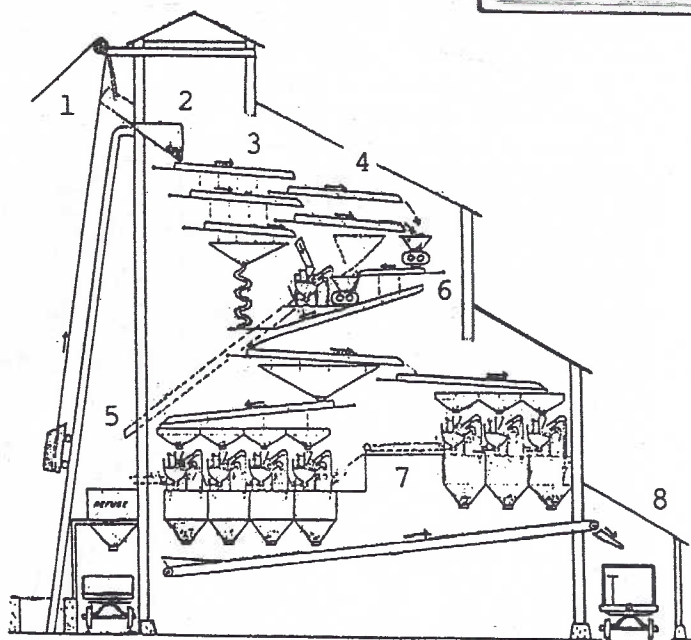
Pennsylvania wore a black face for many years. It should have been red from shame. Its rich beds of hard **anthracite** coal brought riches which far surpassed those of kings. And the profits were huge because of its poorly paid serfs - the 7 to 14 year old **breaker boys**. When they turned 15 they went into the mines with the men and mules.

They faced an endless stream of coal and picked out slate and anything else that was **not** coal as the breaker machinery thundered on. Manual gestures took the place of speech. Steam pipes beneath their seats kept them warm during their 9-hour winter day.



Published by George V. Millar and Co., Scranton, Pa.

Interior of Breaker. Boys at Work, Shamokin, Pa. 43



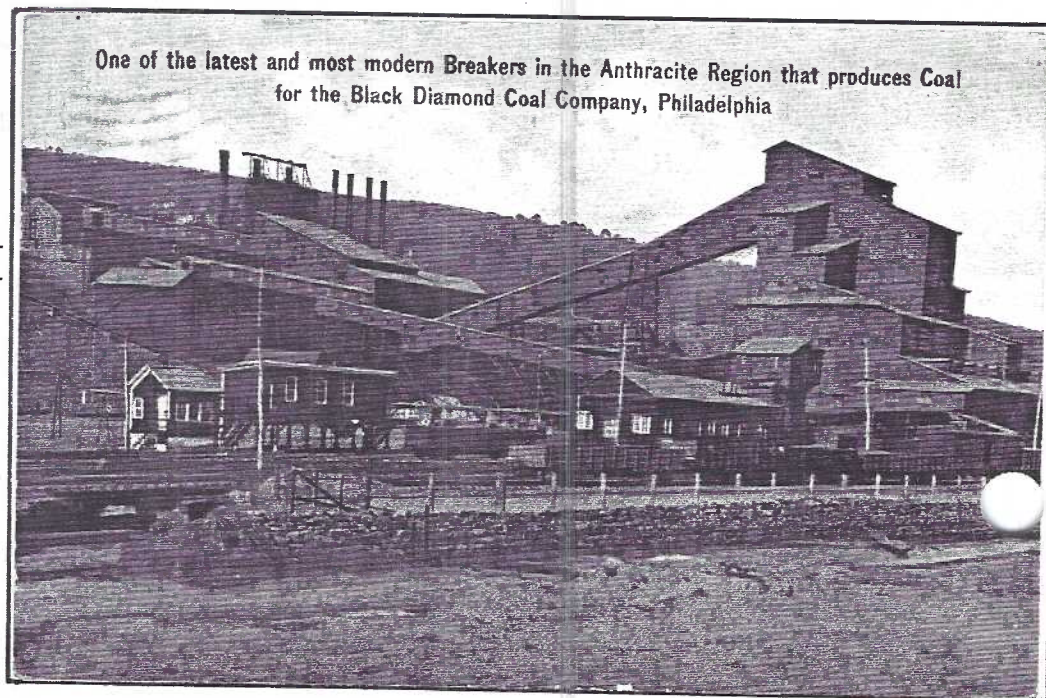
Simplified Diagram of an ANTHRACITE COAL BREAKER.

Courtesy of Lackawanna Historical Society by way of Anthracite Postcard Club.

Mine coal in skip is lifted by cable(1) into hopper where automatic feed(2) works coal into shaking screens(3). Breaker boys at hand-picking screens(4) remove large refuse which exits breaker(5).

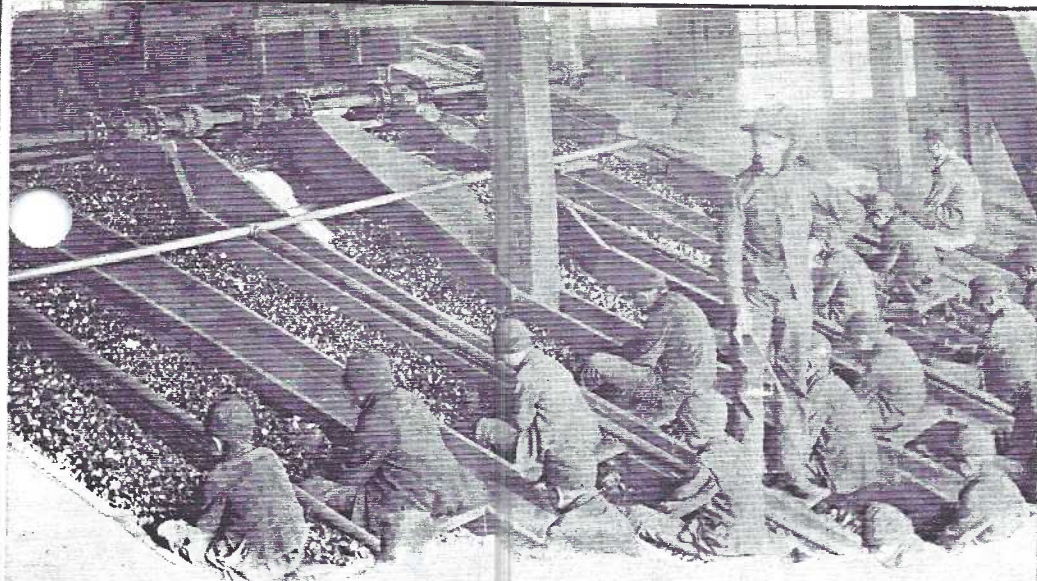
Crushing rolls(6) further break down coal into sizing bins: pea, buckwheat, nut, etc.(7) Each is removed separately on belts to (8).

One of the latest and most modern Breakers in the Anthracite Region that produces Coal for the Black Diamond Coal Company, Philadelphia



PC Top B/W,u/b, publ.by Geo.V. Millar & Co.,Scranton. Mailed at Shamokin,PA.,Nov. 18,1907.

PC Right #3699 Full-color adv.PC by Chilton Co.,Phila.Printed message reads in part "...just passed through this locality...well worth the time to see this modern breaker.This coal is handled in Phila.by the Black Diamond Coal Co...I see they have yards in all sections of the city." D/b,cancelled Phila.Nov. 29,1911.



SCREEN ROOM, MALTBY BREAKER — WILKES-BARRE, PA.

Pay day was the big event. The few gold dollars or silver they received (paper money was never used) went to the family and the reward of 25¢ - all for themselves, often lasted two weeks 'til the next big pay day. Candy and ice cream cost 1 or 2 cents.

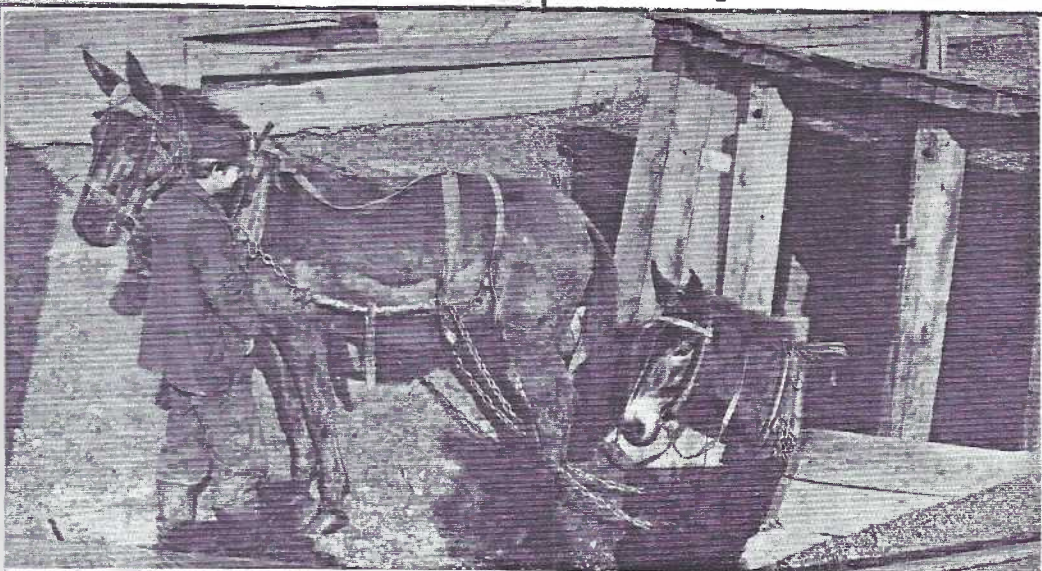
Oxen and horses were tried in the mines but mules proved best. If work was near the surface a mule was lucky - it came up by elevator and was corraled above ground over night. Deep mine collieries had stables far below where some animals spent their entire lives.

Mule drivers had responsible jobs and the **breaker boy** who worked his way up to **driver boy** was the boy who worked hardest.

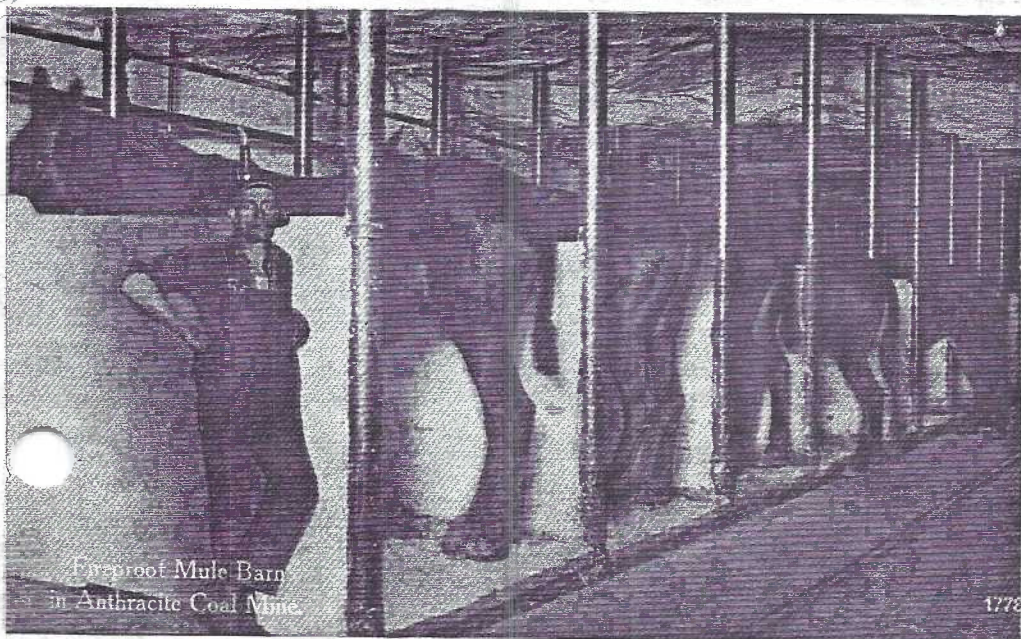
Companies kept veterinarians so the mules were always in good health. Rub-down horse liniment was as much used by the drivers as it was on the mules!

Mules and their drivers were "buddies" and often they both chewed tobacco and drank beer. A favorite ballad went like this:

My Sweetheart's the mule in the mines,
I drive her without reins or lines,
On the bumper I sit,
I chew and I spit
All over my sweetheart's behind.



Coming out of the Mine - Wilkes-Barre, Pa.

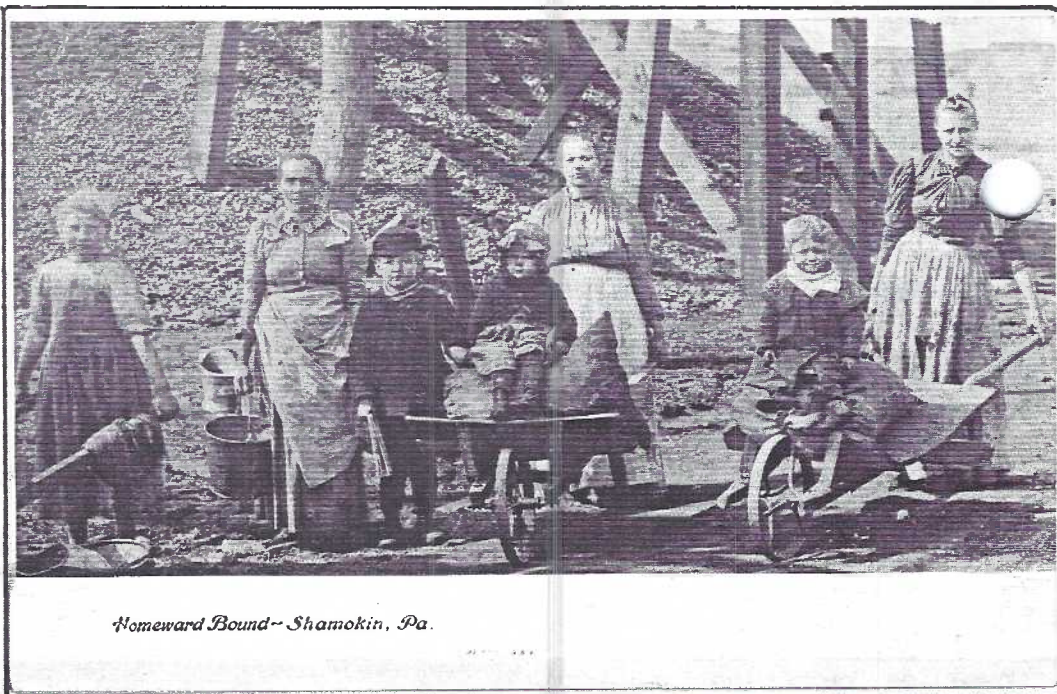


Fireproof Mule Barn
in Anthracite Coal Mine.

PC Top B/W,u/b by J.Murray Jordan, Phila. Cancelled 1905 from Wilkes-Barre, PA. to Hamburg, PA.
PC Center B/W,u/b, J.M.Jordan.
PC Left Full color, d/b #1778 printed by The Times Printery for Scranton News Co., both of Scranton, PA. captioned "Fireproof Mule Barn in Anthracite Coal Mine". The postmark is July 20, 1923 to Utica NY from Scranton and is written in what appears to be an eastern European language.

Notice the young boys in **Homeward Bound** (right) are all below the 7 yr.old **breaker boy** age.The families have been to the waste banks where they routinely pick bits of burnable coal that was missed inside the breaker.

No one escaped hard work in the immigrant families that lived in small **Mine Patch** communities near every breaker.Descriptive names such as Dutch Hill, Fidler's Green, Stablehouse Row and Bear Valley No.1,2 and 3 dotted the east-central Pennsylvania landscape.



Homeward Bound--Shamokin, Pa.

PC Right B/W,u/b by J.Murry Jordan of Phila.



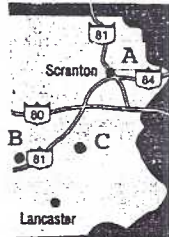
PC Above Full color chrome #79790 by Koppel Corp., Hawthorne,NJ for Modern-Ad, Butler,PA. Reverse side caption reads "Seldom Seen Valley Mine,St.Boniface,near Patton,PA.,Rte.36. Children digging their own coal samples while an experienced guide looks on."

PC Right Full color d/b #25729 by Hugh Leighton Co,Portland,ME.reads "Hungarian Miners Children gathering Coal near Wilkesbarre,Pa."

Child Labor laws and eighty years make the difference.

MINING POSTCARDS are popular with collectors interested in social history,Pennsylvania geography,occupations,working animals and named coal breakers.

You can study PA.'s mining heritage first hand.Near Scranton (A) you can tour the **Lackawanna Coal Mine** and **Anthracite Heritage Museum**. The **Pioneer Tunnel and Museum** at Ashland(B) is smallest and closest to Lancaster. Near Freeland (C) is **The Eckley Miners' Village**, an indoor/outdoor musuem on 90 acres that looks like a well-maintained ghosttown. Phone first for all tour hours.



Hungarian Miners Children gathering Coal near Wilkesbarre, Pa.

A WORD OF CAUTION: Many of the same postcard scenes are found with different title locations including 'named' breakers. And local publisher's names are not necessarily a guarantee to location!

FOLLOW UP

In my enthusiasm to 'show 'n tell' about the gorgeous set of Mitchell Zodiac PCs I found at the Nov. Morlatton show, I stumbled on important facts that have been clarified by fellow LCPC member #270, **Susan Nicholson**.

"Dear Jim,

I would like you to clarify your reference about the Mitchell Zodiac cards. You quoted me as saying the Mitchells were scarce and then went on to contradict that with the fact that 438 sheets were found. I stand behind my statement **they are scarce** because besides nearly half that cache being lost in cutting because of the off register backs, **none** of that find were printed on the front! The originally distributed cards have extensive printing on front stating birthstone, flower, horoscope and other information. These are **very hard to find** and so will be the unprinted ones in a couple of years. Susan Nicholson"

Thank you, Susan, for keeping this editor 'in line'. You're an asset to our hobby and certainly to our Club.

Follow **Susan's** column Pursuing the Marvelous in the Postcard Collector magazine.

INFORMATION WANTED

I'd like to accomplish two things:

- 1) finalize a checklist for these three local businesses that advertised on PCs and share the info. with our members.
- 2) complete (?) my collections of the same. ...therefore I'll trade my duplicates for your duplicates.

Examples:



(all legends reduced)

LANCASTER'S BIGGEST AND BEST
FURNITURE STORE



M. T. Garvin & Co. Department Store
Lancaster, Pa.

40 AND 42 EAST KING STREET
LANCASTER, PA.



Compliments of BARRY & ZECHER CO.,
Manufacturers of "Light Lift" Pumps, Lancaster, Pa.

Jim Ward, 721-9273 (Ephrata) If you're calling from Lanc. City, I'll call you back (it's no chg. for me.) 1795 Kleinfeltersville Rd., Stevens, PA., 17578. Will meet with you here or at your home or at our Club meeting.

First come-first served!...I don't have many dups. and Winter is postcarding time!

SYMPATHY

The Club extends its condolences to **John Pierce, member #235** and his family. **Nancy, member #234** died of cancer in January.

THE CARD STAFF

Artist Jim Rudisill. Proofreaders Dot Fry and Charlie Griffiths. Columnist C. Griffiths
Editor Jim Ward. Correspondence to **THE CARD**:
1795 Kleinfeltersville Rd., Stevens, PA 17578
(Note: P.O. Box 300, Lititz, PA now inactive).

AMISH POSTCARD PAINTING #2

In the Sept. '92 issue of **THE CARD** we showed Curteich #9A-H2093 (see illus.) At that time it was the only painting we'd seen of Amish used on a postcard. Don't say 'ever' or 'never', especially when talking about postcard subjects!

Although the **AMISH FAMILY...** had no known artist, we are able to attribute this new find. Photographed and published by Jim Hess, the **PORTRAIT OF AMISH BOY AND HIS DOG** reads "Original Hand-Oil Painting by Milton Denlinger - A Lancaster County Artist, Soudersburg, Pa." #S16544 chrome is in predominant greys and blues. Printed by Koppel.

Can you show us Amish Painting #3?

Right. Painting #1, **Amish Family...** (reduced 53%) found in Steinfeldt store. (Story in Sept. '92 issue of **THE CARD**)

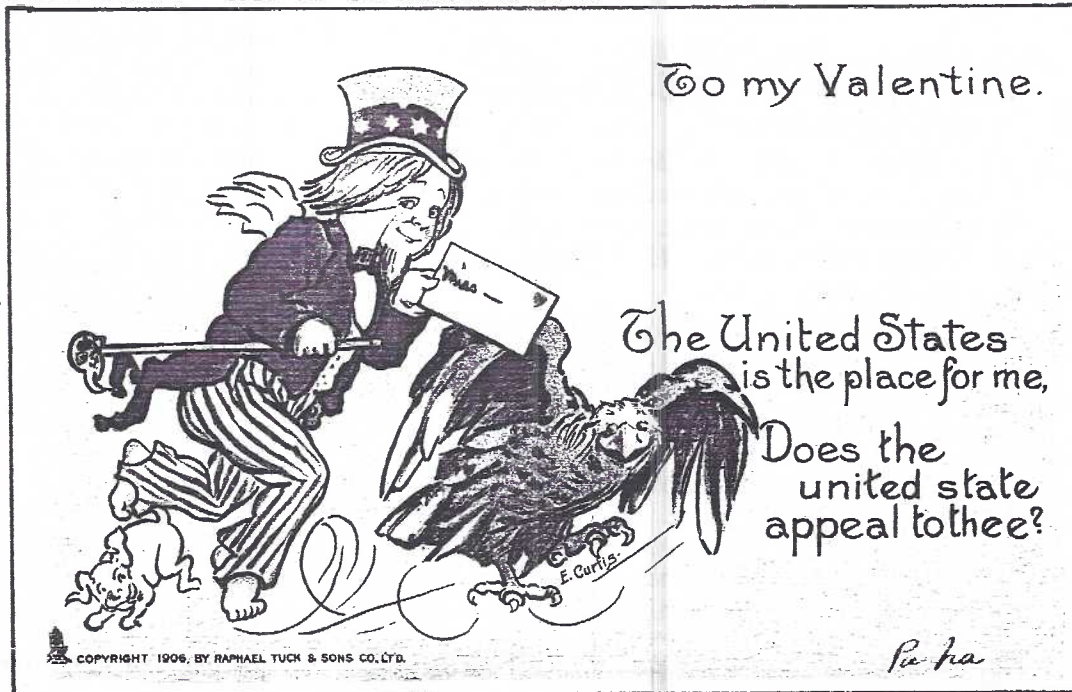
Below. Painting #2, **Amish Boy and His Dog** by Milton Denlinger. (Postcard shown actual size)



"FROM MANY LANDS" Tuck Valentine Series #3

Feb.1994 pg.6

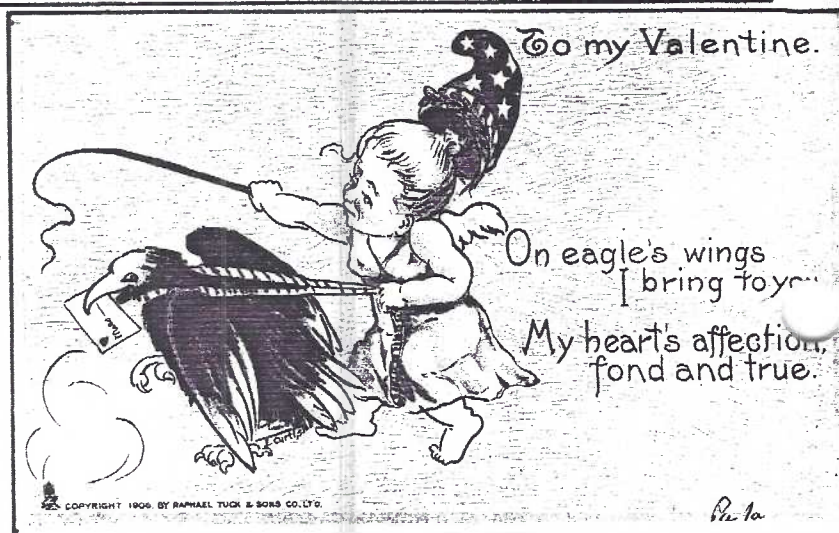
Set of 12, Copyright 1906 Raphael Tuck & Sons Ltd. All signed by the artist - Elizabeth Curtis, noted also for "Valentine Maids" "School Slates", "Love's Labors" and certainly her "Garden Patch" set.



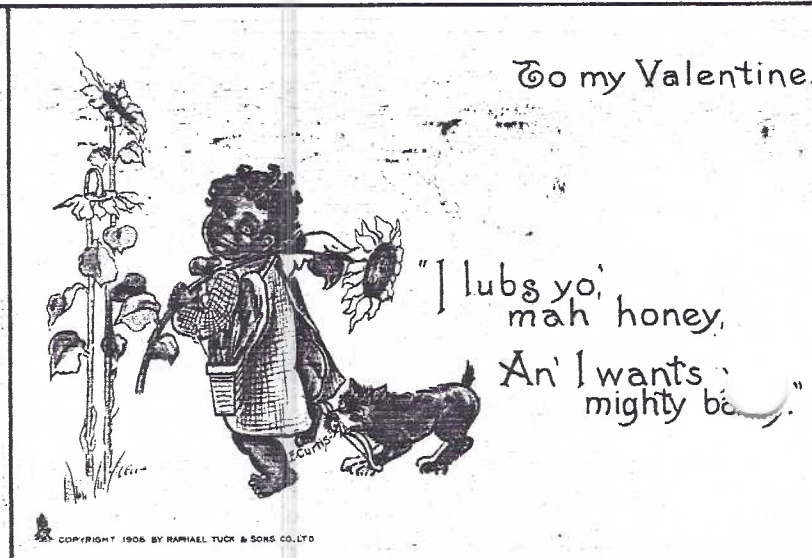
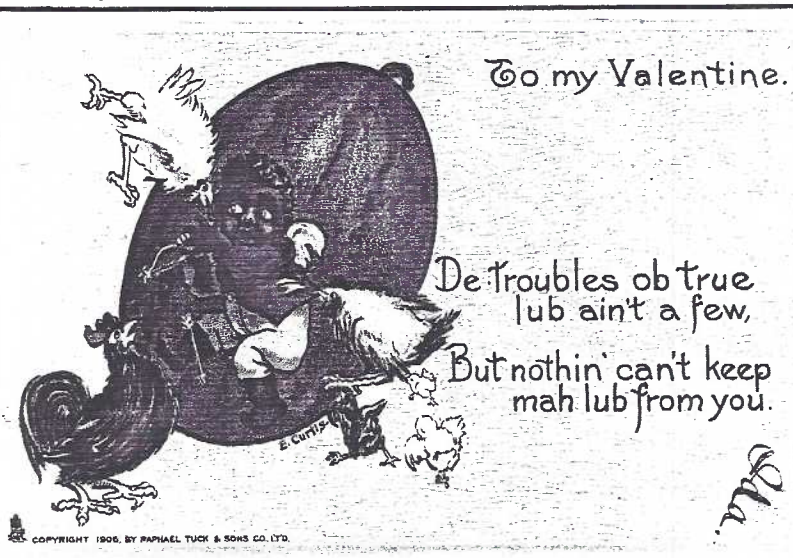
Our valentine postcard set shows winged cupids on each card. (And these cupids seem to be paired = boy and girl cupids!)

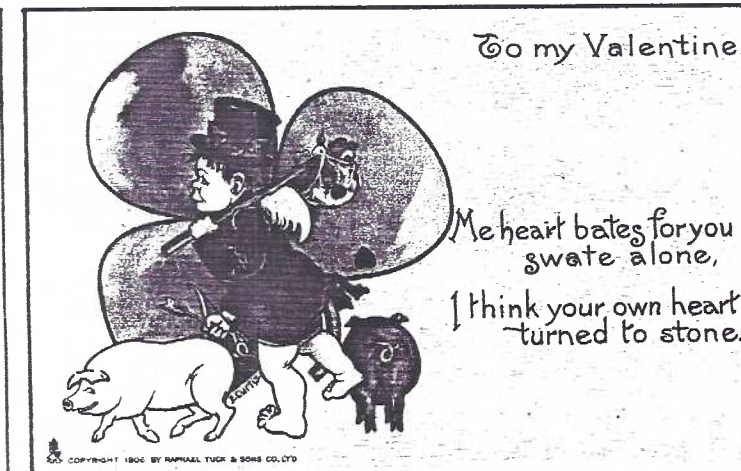
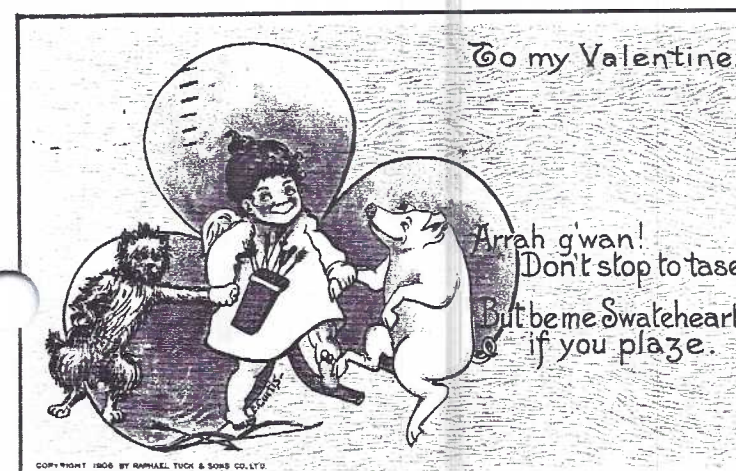
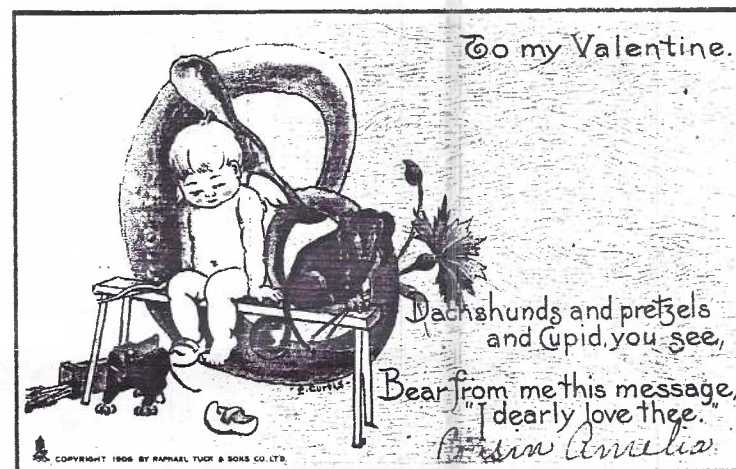
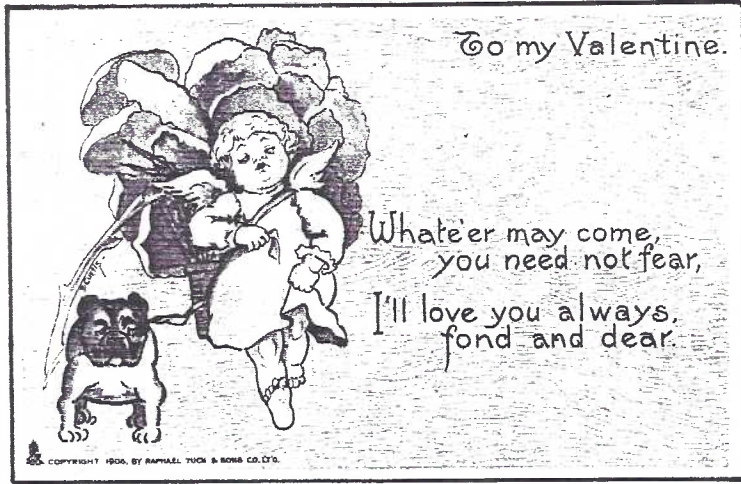
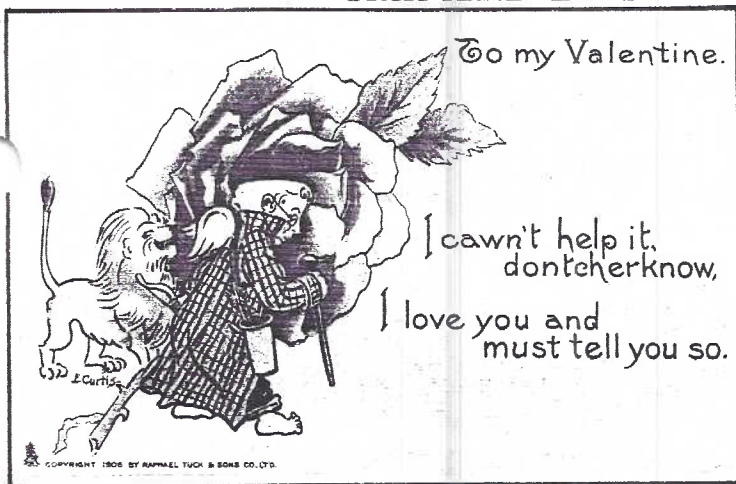
The set title suggests different "lands" (countries) and we can distinguish by costume or dialect = the USA, England, Scotland, Germany and Ireland and, as ethnic was an 'in thing' back then = Negroes.

In many cases the flowers help identify Cupid's origin as do the animals. Cupid's bow and quiver show on most cards.



To my Valentine is a common denominator on each card in the set 80% actual size which is printed with a wood-grained background. Our USA postcards were given to Master David Graybill, East Petersburg, Pa. Cancellations have been seen from 1907 to 1910 on both divided and undivided backs. Value in very fine condition is \$3-\$5 with USA and blacks at the upper end. A used set is well worth \$50, mint PCs much more.

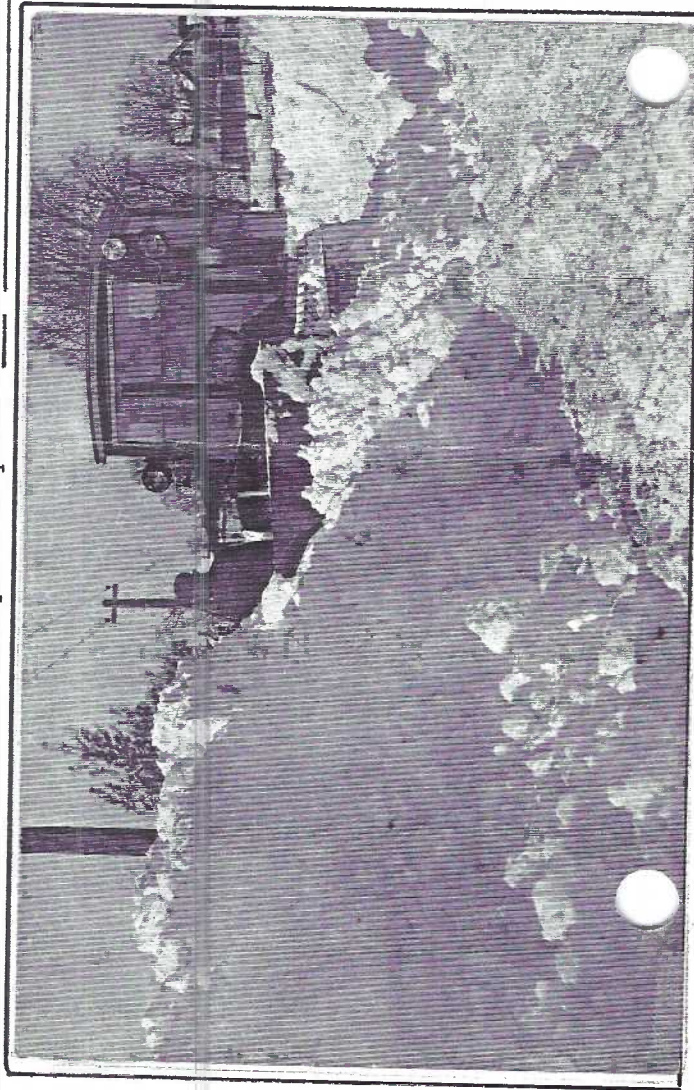




You're tired of shoveling, slipping and sliding with earliest postmark to editor wins prize, so sit back, relax and tax your brain a Facsimiles or duplications accepted. Be sure bit. The answers are right before you - to include your name and address Ed. note: Match a SUBJECT to each description. The I'm using Jan. and Feb. to sort over 7,000 first letters for each subject will spell a PCs. There will be duplicates. Winner and phrase reading top to bottom. Correct answer prize will be announced next month.

ANSWERS

Alphabet	Sun. newspaper PC publisher
Aviation	Popular Klein flower set
Braskerud, Ove	Tuck's artist of military PCs
Cats	Admiral Peary postcards
Cupid	1900, 1905, 1908, 1912
Dwig	On nice early Easter PCs
Fröeliche Ostern	Tuck 'imitation art' PCs
Hearst, Wm. Randolph	Free PCs given with gasoline
Heims, Barb & Bud	PC artist in our own LCPC
Hooligan	Hold-to-Light 'cousins'
Illustrated	PC comic with a tin can hat
Lounsbury	LCPC's own norseman
Oilettes	Prolific postcard publisher
O'Neill, Rose	Famous western artist on PCs
Payne, Harry	Famous PC artist of children
Polar Expedition	LCPC's picnic hosts
Presidents	Nickname of a postcard artist
Rudisill, Jim	Paul Smoker's favorite PC topic
Russell, Chas.	Every large town had one
Tinsel	The bane of mailmen
Transparencies	Artist of postcard Kewpies
Twelveteers, Chas.	Published scarce Labor Day PCs
Union Oils	February's William Tell
Year Dates	Popular PC topic - esp. in Feb.
YMCA	PC excellence by Louis Wayne



IS YOUR NAME HERE?

With some trepidation we list those members whose 1994 dues have not been recorded (Jan. 31) by the Membership Chairlady. If your name is here and does NOT belong here, either contact her or honor her with your check for \$7(\$3 extra per household member)

If you see friends' names, kindly remind them. We would like them to stay. Most times it's just an over-sight. Send dues to: LCPC, 786 Kames Hill Rd., Columbia, PA, 17512.

Abendroth, Harry	Gottlieb, Marilyn	Nicholson, Susan
Abendroth, Stella	Groff, Clyde	Nitchman, Effie
Allmen, Diane	Hageneyer, Eva	Nitchman, Levere
Aurand, John	Hellingner, Helen	Ochs, Marguerite
Bell, Edna	Hontz, Karyn	Paegge, Katherine
Bomberger, Mary	Hontz, Ken	Powers, Marie
Brandreth, Christine	Jeneski, F.W.	Rodriguez, Aida
Brandreth, Bert	Kaufman, Herb	Rodriguez, Jose
Brown, Andreas	Kaye, Donald	Roop, Bob
Brown, Julie	Kirchgesner, Delores	Russell, Chris
Corliss, John	Kirchgesner, George	Ryan, Dottie
Cox, Helen	Kolb, Ken	Shaub, Sandra
Cox, Roy	Kolb, Ginnie	Sherrard, Fava
Deibler, Harry	Kopel, Rachel	Skillman, Don
Deibler, June	Kuntz, Ruth	Staman, Keith
Delcher, Dee	Kurey, Mary	Stecz, Joanne
Dennis, Carol	Lehman, Joan	Studenroth, Linda
Dennis, Ray	Lemin, Linda	Studenroth, Bill
Emerich, Tim	Levin, Elaine Buck	Thurman, Charles
Epler, Joe	Long, Dave	Trump, Michael
Erdman, Claudia	Martin, Bill	Tullis, Sally
Erdman, Bob	Martin, Mary	Tullis, John
Frantz, Helma	McGinley, Jolene	Valsing, Anne
Frantz, Leo	McGinley, John	Valsing, Charles
Freedman, Joe	Metzler, Helen	Weidman, Paul
Gallagher, Jim	Miller, Jay	Weitzel, Janice
Gallagher, Kelly	Morrison, Jim	Wesler, Marilyn
Gottlieb, Howie	Mulholland, Sarah	Wolfe, Valerie

If you were alive last month you spoke about (or thought about) the weather. Our undivided back real photo PC (AZO stamp box with squares in corners, Brown #17*: c.1926-1939) was taken BWCf. Many of us endured harsh winters Before Wind Chill Factor was concocted by members of the House of Exaggeration. How did we survive BWCf? We listened to our parents and put on an extra scarf, dry galoshes and covered our ears. We fed the birds more often. We came back indoors when we were cold! We survived BWCf without help from the tweets on TV!

*Methods of Dating Photographic Postcards from Prairie Fires and Paper Moons by H.Morgan and A.Brown. It's in our Library. Read it.