

# The Card

MONTHLY PUBLICATION OF  
LANCASTER COUNTY POSTCARD CLUB  
LANCASTER, PENNSYLVANIA

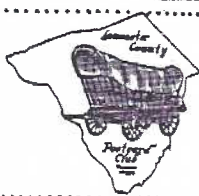
MEETINGS: 3rd MONDAY  
FAITH UNITED  
CHURCH OF CHRIST  
1204 WABANK STREET  
LANCASTER, PA

August 1994 - Vol.5, No.8

## NEXT MEETING

August 15, 1994 7pm  
Buy/Sell/Trade 5:30 pm

Yearly Membership is \$7 (plus \$3 per person, same address). Ads: \$15 full page, \$8 1/2 page. \$5 1/4 pg. Prepaid. Articles and Correspondence: 1795 Kleinfeltersville Rd., Stevens, PA 17578 Dues and General Correspondence to: LCPC c/o Mowrer, 786 Kames Hill Rd., Columbia, PA, 17512



This **FULL-COLOR EXPO FRONT PAGE** is available with check for \$1 to LCPC plus size 10 SASE. Pages 1B and 1C are two different varieties - the set of 3 for \$3 plus SASE.



A beautiful lady on a multi-lingual PC in the Art Nouveau style (above). Transparency from Hartmann Series #1 "Brighton (England) On The West Pier". ➔



AUGUST 20, 1994

LANCASTER COUNTY  
POSTCARD CLUB  
EXPOSITION

CLASSIFICATION \_\_\_\_\_

EXHIBIT TITLE \_\_\_\_\_

EXHIBITOR \_\_\_\_\_

### FULL COLOR POSTCARD

Available to only seven members, this brilliant blue First Place Postcard will be the "ribbon" for our 1994 Expo in 7 categories. Red, Yellow and Green Postcard "ribbons" will be given for Second, Third and Honorable Mention Exhibit Boards. The Best of Show and People's Choice are in startling Purple.



## ESKIMOS and INUITS

Our photographic essay this month has 3 purposes: 1)to acquaint you with Eskimos or Inuits, 2)remind you that CC's(continental-size chromes) are collectible for their education as well as beauty and that 3) "thinking cool" might just keep you cool!

There are ample, inexpensive continental chromes available about Eskimos - from Mike Roberts of Berkeley, CA, Fidelity Colour/ Evergreen Press in Canada, Arctic Circle Ent., Anchorage plus the "big" printers- Curteich, Dexter and Crocker.

Without much trouble or expense you can also find colorful standard size cards as well as very collectible scenes and subjects in b/w from the "golden age" of PCs.

Dealers might file **Eskimos** under Canada, Alaska and Seattle, WA (esp. for totem poles) or under Indians, Ethnic and even Expositions (Alaska-Yukon). They are an exciting group to collect and study.

---

"LITTLE CARIBOU. His Eskimo playmates call him "Ah-tik". See his eyes sparkle like ice crystals as his mommy prepares him for a romp in the snow." By Alex Wilson Publications, Ltd., Dryden, Ontario. This and others in the **series from original pastels** by Can. artist Audrey Young Oppel under the Wilson Superb label. Similar paintings of children can be found by Dorothy Oxborough and Dorothy Francis on Majestic postcards by S.G. Mann, Scarborough, Ont.



Although the house on the rt. is frame, Eskimos always used wood/logs where they were available, otherwise they found stone or used sod or driftwood for their homes. Only where there was nothing but ice and snow did they build igloos.

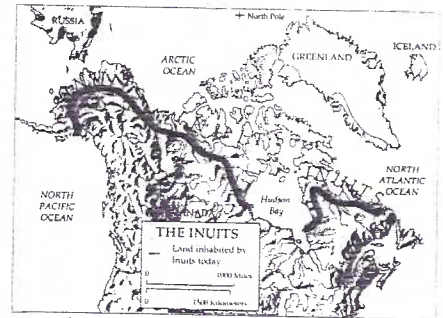


"ARCTIC ALASKA. The man has on a parka made from bird breasts. The lady is wearing a gut-skin parka. Garments made by hand and worn in olden days." Curteichcolor C-ART-6 for Alaskan Post Cards, Anchorage. Native people who live in the arctic regions of North America and Greenland call themselves **INUITS** which means **The People**.





*Eskimo Ivory Carvers*



Land inhabited today by Inuits is above the dark line - from Alaska on the West to Labrador on the East.

**A Brief Inuit Dictionary:**

- Aglus** - holes in the ice
- Amaut** - hood to hold baby on the back
- Igloo/Iglu** any kind of house (not just one made of ice blocks)
- Inuas** - spirits or souls
- Komatik** - a dogsled
- Kudlik** - lamp, also used as a cook stove
- Mukluks/Kamiks** shoes made from skins
- Muktuk** - fat beneath the skin of marine animals (a special treat)
- Nioyayit** - a trader
- Ulu** - curved knife used by everyone (a favorite crossword puzzle answer!)

Inuits traded with white explorers as early as 1576 when Martin Frobisher sought a North-west Passage across N.America. Before he planted the U.S. flag at the North Pole, April 7, 1909, Admiral Robt. Peary spent a winter studying the Inuits. Four were with him when he reached the Pole: Ootah, Seegloo, Egingwah and Ooqueh. Peary said he never could have reached it without the help of the Inuits.



*Teslin, Yukon Territory . . . Home of the Teslin Snowshoes*

*Photo: Rev. J. P. Tanguay*

**NATIVE HANDICRAFTS** The making of snowshoes from natural materials available in the north - animals and trees - is one of the highly developed arts of the people of Tetlin. View shows Geo. Sidney a famous **snowshoe maker** with his family." PC #18510R dist. by Leslie Lennox, Calgary, Alberta. Tetlin Indian Reservation is in Alaska near the Yukon Terr.



# NON-ESKIMO TOTEMS

To clarify a misunderstanding, totem poles we so often find on PCs are Indian conceptions, not Eskimo or Inuit. (This note from our staff historical sociologist, CWG.)

The Saxman Indian Village near Ketchikan has the largest collection of totem poles in Alaska. Isolated poles are in Tacoma and Seattle, WA. Others are in Stanley Park, Vancouver, B.C., Chief Shakes Island, Wrangell, AL as well as the Berlin Museum.

Subjects we've seen on totems poles are: the sun, beavers, fish, ravens, bears and owls.



*Eskimo and their Oomiak*



*Legend of the Totem Pole*

## LEGEND OF THE TOTEM POLE

These monuments in cedar, one of the great primitive art styles in the world, are found nowhere on earth but in the Pacific Northwest Coastal region.

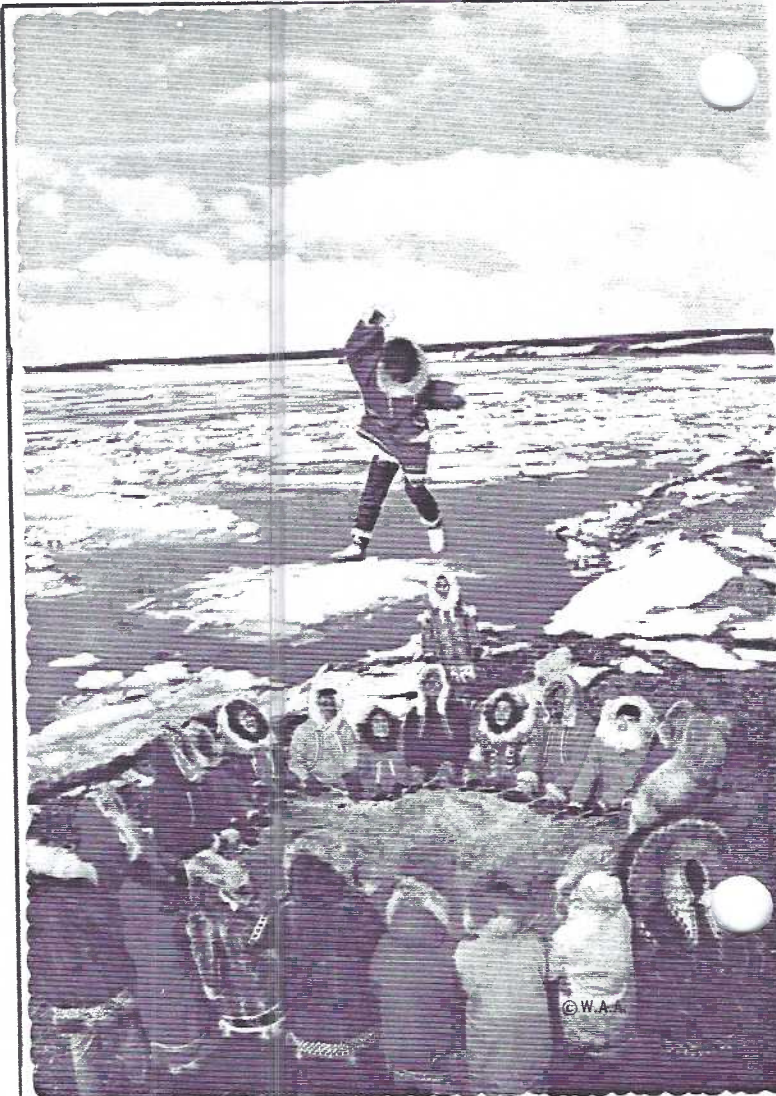
Totem poles are not idols and have no religious significance. But they do fall into three categories:

- 1) Monuments to the dead, complete with place for body and ashes.
- 2) Talking poles, commemorating anniversaries or historic episodes.
- 3) Family Trees, including crests.

They each tell a story read from the top and are colored by the artist's imagination Curteichcolor C-SE-13/ Alaskan PC, Anchorage

Tossing of the "leader" of a hunting party helped him see over the ice ridges and locate game without being seen by it. (Here a demonstration for the camera.) Mirro-krome by Crocker, #ACE-22 for Wien Airlines.

"ARCTIC ALASKA - ESKIMO OOMIAK. Sealskin boat used for hunting in the Arctic Ocean" C-ART-4AA Plastichrome, Boston for Alaska Scenic, Anchorage Umiaks (oomiaks) helped whole communities move to summer camps together. Often called the "woman's boat" since they usually paddled when it was used to carry families and their belongings. Men often traveled alongside umiaks or led the way in smaller, lighter kayaks. The umiak was also used for hunting walruses and whales. (Note modern outboard motor.)





## NEW MEMBERS

#329 **MICHAEL CHAPMAN** Box 345, 102 Maple Ave, Mt. Gretna, PA 17064 964-3352. Collects Carousels, Ocean Grove, NJ and Mt. Gretna.

#330 **KATHERINE H. CHAPMAN** Same as husband **Michael**, who gave her this membership for a birthday present! What a great idea! Happy Birthday, **Katherine**, and WELCOME to you both!

### KITCHEN UP-DATE

**Lewis Bechtold** is donating towards chicken corn soup from an abundant '94 corn crop. The Club will buy chickens if several members will volunteer to cook 'em up. Call **Sandra Shaub** at 786-4344 or **Barb Mowrer** at 684-5331 - today!

### Late Risers Take Note!

If you would prefer not to bring donated food to the F&H Center before 8AM on Aug 20 bring it to the Aug 15 meeting. The Kitchen Krew can freeze it and you can sleep in!

Phone (above) to see what is still needed besides cakes, pies or cookies.

### SAUCY SEASIDE POSTCARDS ON STAMPS

Five British stamps honor 100th Anniversary of the Picture Postcard in the United Kingdom. Designs are from over 10,000 produced by Donald McGill, noted for his saucy seaside cards. Denominations are 19p, 25p, 30p, 35p and 41p. All are printed in full color.

### FUTURE SHOWS



Aug. 5-6 **HAVRE de GRACE, MD** Chesapeake PC Fair. Community Ctr., 10-7, 10-5. \$2.

Aug. 20 **LANCASTER, PA** Lancaster County Postcard Club's 2nd Annual Expo. Farm & Home Center, Rte 72 (Manheim Pike) enter at Service Rd. 9-6. \$1.

Sept. 9-10 **MT. LAUREL, NJ** Postcard Society Inc. Budget Motor Lodge. 9-6, 9-3.

Sept. 10 **Towson, MD** Dee's Show at the Holiday Inn, Cromwell Bridge Rd., I-695, exit 29A.

### John Klein Postcards

SEE YOU AFTER THE SHOW

Saturday 10-5  
Sunday 8-5

Exit 21  
Pa. Turnpike



**BARR'S AUCTION**  
2152 N. READING ROAD  
DENVER, PA 17517  
& ANTIQUE WORLD

August 1994, pg. 5

### NPW CARD COMMITTEE

Pres. **Walt Mowrer** would like a committee to get busy right after the Aug Expo. It would work on ideas and art for the '95 NPW PC for National Postcard Week, May 1 to 6. Volunteers wanted now, recruits picked later

## AUCTION ACTION



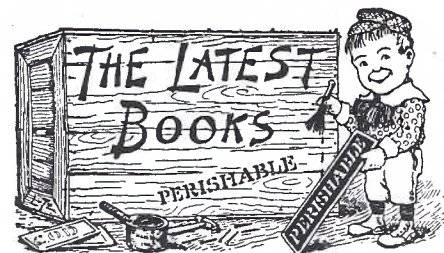
Results of Auction #16. Thanks, as always to **Darvin, Walt, Norm, Jere** and **Bud** and **Harold Moyer** was just getting warmed up as Volunteer Substitute when **Darvin** showed up! Maybe he'll get another chance.

Gross \$548. Net \$493.20. LCPC's share = \$54.80!

Ed. note: I received (on June 22) a nice real photo baseball diamond PC from member **Joan Lehman** who is donating it to LCPC for the October auction. **Joan** says she "just enjoys keeping in touch through THE CARD". The staff and club thank you, **Joan**, for the

Lot # followed by price realized.

1 34	13 2	25 3	37 3	50 11	62 20
2 5	14 6	26 6	38 5	51 15	63 5
3 12	15 6	27 3	39 1	52 9	64 15
4 8	16 5	28 5	40 1	53 5	65 11
5 4	17 9	29 6	41 1	54 14	66 4
6 22.50	18 2	30 6	42/43 1	55 2	67 5
7 5	19 6	31 8	44 1	56 26	68 15
8 12.50	20 1	32 6	45 8	57 22.50	69 8
9 2	21 2	33 11	46 21	58 5	70 12.50
10 2	22 3	34 4	47 13	59 20	71 4
11 5	23 2	35 1	48 5	60 6	72 12
12 4	24 2	36 4	49 6	61 10	



### DISCOUNTS on DOVER POSTCARD BOOKS

Each book has 24 postcards for \$4 (incl. tax). Buy 4, get the 5th book FREE. 75 DIFFERENT TITLES IN STOCK. Subjects followed by types: Birds (3) Cats (3) Decoys, Dinosaurs, Teddy Bears (2) Roses (2) other Flowers (3) Seashells.

Old Advertisements (4) Dolls, Tiffany (2) especially for Children (7) Art Galleries, Museums (6) Fashions (3) Mucha/Poster Artists (5) Vienna Workshop/other Artists (8) Artists of Old West (4) Historic Airplanes, Cars, Sailing Ships and Ocean Liners, and more!

Stars of Opera, Movie and Baseball; Sheet Music, Old Phila., Wash. D.C. and Indians.

Valentine, Halloween and Christmas (4) PCs.

At **YORK** and **LANCASTER CLUB MEETINGS**

At **LANCASTER COUNTY POSTCARD EXPO**

Phone 721-9273 to reserve titles.

Thanks, but no mail orders, please. **Jim Ward**.



# TIME FOR AMERICA

Seldom does a company biography such as **Time for America - Hamilton Watch 1892-1992** ever reach the illustrated book stage and Lancaster was recently blessed with a 300 page volume written by an expert researcher.

Those of us who collect local postcards can be thankful for Don Sauers' excellent history of the **Hamilton Watch Company** of Lancaster, if for no other reason than his schematic drawing of **Hamilton** on page 206.

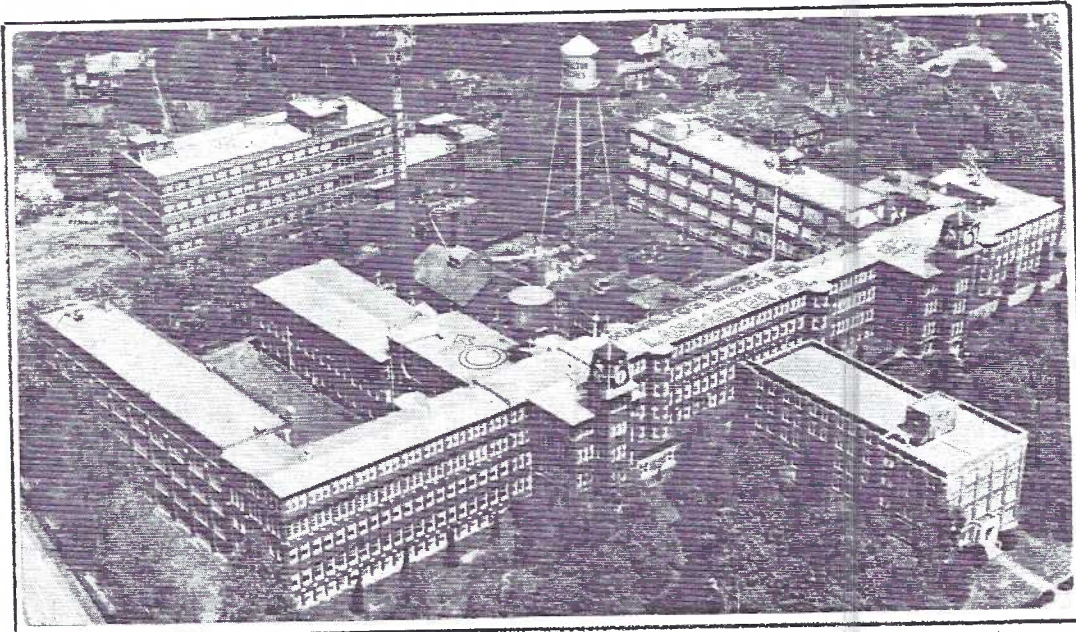
Step by step, Sauers shows us the almost continual construction of ells and blocks from 1874 to 1963, culminating in the landmark we know on Columbia and Wheatland

Avenues. Until now we've relied only on the generalized dating of postcard "eras", using the few formats available: golden age (undivided and divided backs), white border, linen and chrome.

If you file by subject, you can use his building dates to ascertain a true publishing sequence for your **Hamilton** postcards.

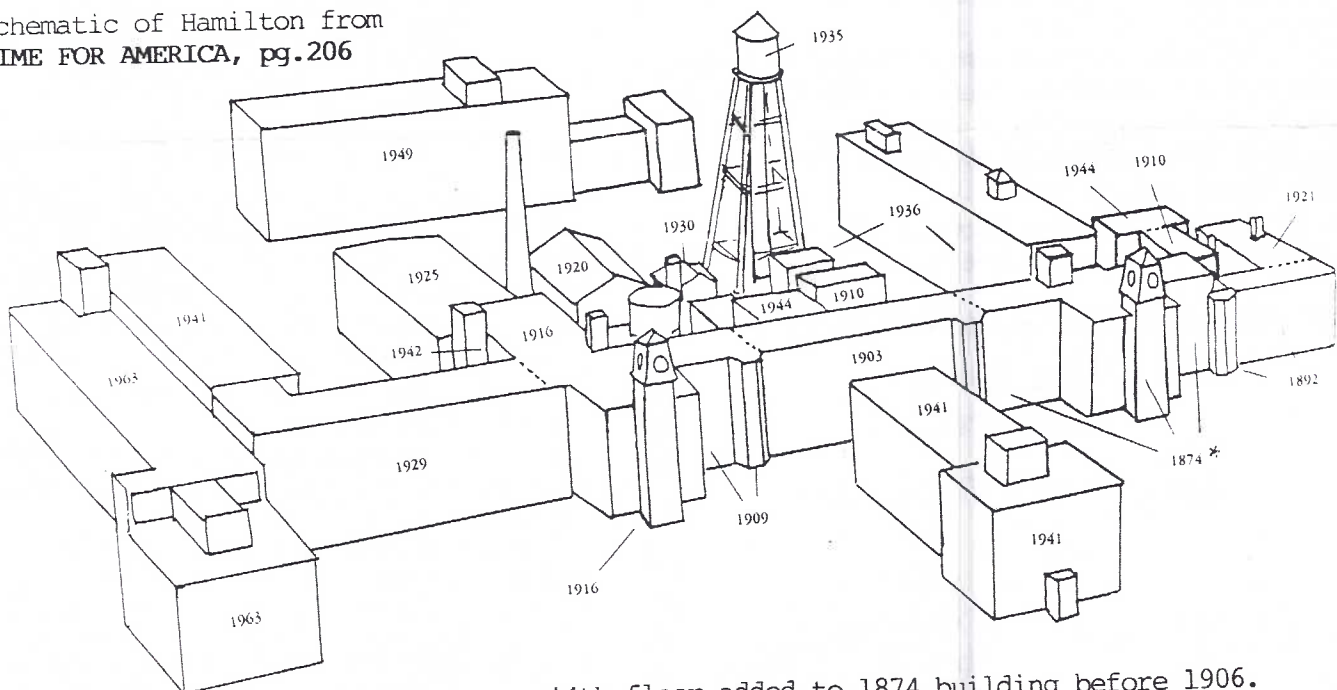
Historians and chronology buffs will appreciate the tome even more. Hundreds of watches are illustrated (over 150 on color plates).

**Time for America** by Sutter House, Lititz, PA is available in local bookstores, \$39.95. It is the complete story of Lancaster's largest watch manufacturer.



#3-1621 b/w possibly by **Hamilton Watch Co.** PM: Lanc., PA, 10/25/51.

Schematic of Hamilton from  
**TIME FOR AMERICA**, pg.206

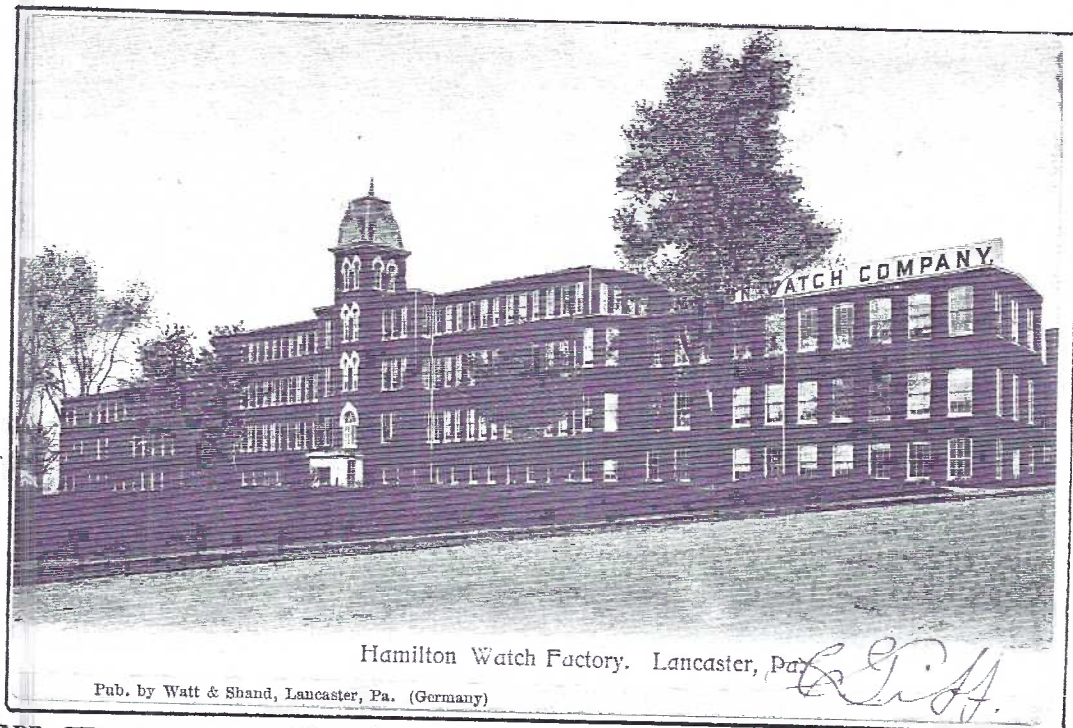


\*4th floor added to 1874 building before 1906.  
4th floor added to remainder of main bldg. in 1909.



Excellent colored un/bk  
by Watt & Shand.

PM:Millersville, 11/5/1906



**POSTCARD CHECKLIST OF HAMILTON WATCH COMPANY BUILDING**  
(Adv. and Misc. Hamilton Watch PCs in future checklist)

All horizontal format  
All divided backs except Souvenir PC Co.  
and Watt and Shand

Albertype Co., The  
...for L.B.Herr

No. # Hamilton Watch Factory  
...for H.S.Williamson.

No.4 Hamilton Watch Factory  
Commercial Colortype Co. for I.Steinfeldt  
Sexichrome #33766 Hamilton Watch Co.  
Herr, L.B.

No.# The Hamilton Watch Factory  
Koppel Corp.

No.# Home of Hamilton Watches (aerial)  
Langsdorf, S. and Co.  
E7652 Hamilton Watch Co.

Leighton-Valentine/Valentine & Son's/  
Valentine-Souvenir Co.

#221,075 Hamilton Watch Co. Building  
#403,776 Hamilton Watch Company  
Rotograph Co.

#2692 Hamilton Watch Factory  
(various prefix letters)  
Souvenir Postcard Co.

#4377 Hamilton Watch Factory  
#A14857 Hamilton Watch Co.

#A15575 Hamilton Watch Company's Factory  
Teich, Curt

6B-H589 The Home of Hamilton Watches  
252-1680 Hamilton Watch Co.

#R30623 Main Building/Hamilton Watch Co.  
(additional caption under view) Found w/  
various advertisements on address side  
R59695 Western End View, Hamilton Watch  
Factory and Grounds

...for I.Steinfeldt (I.S.)

#1C-H1306 The Home of Hamilton Watches

#OA4486 Home of Hamilton Watch Co.

#96231 Home of Hamilton Watch Company #4  
...for F.W.Woolworth (W)

#R-30623 Home of "The Hamilton Watch"  
Tichnor Bros.

...for Morrison Bros. News Agency  
#133850 Hamilton Watch Co. (foreground).  
Aerial view locating other landmarks.

Watt and Shand

Hamilton Watch Factory

Unknown Publishers

Possibly publ. by Hamilton Watch. Each is  
an aerial view showing company name and  
airplane directional marking on roof.  
All are black/white halftones. First two  
are only 3 1/4" high, third is 5 3/4" long.

5M-1621 Shows parking lot, Wheatland Ave.  
3-1621 Bldg. replaces parking on W.Ave.

No.# White border w/white caption: Home  
of The Hamilton Watch Co., Lancaster,

Photogravure with coated stock

#5416 Hamilton Watch Factory

Message side reads "In space below may  
be written sender's name and address  
(and communications after Mar.1, 1907)"

Sepia.. "Hamilton Watch Co.'s Factory".

With printed message re receipt of watch  
movements left for repair.

Hidden Views / Folders

Kurzenknase, Harrisburg, 1907

...for Improved Order of Red Men

23 views w/untitled Hamilton factory.

Teich, Curt

#1426...for I.Steinfeldt

16 views. Hamilton Watch Co.

Unknown Publisher

"Souvenir Mail Card" w/W.Bridge cover.

10 views. The Hamilton Watch Factory

**POSTCARDS MUST BREATHE!**

Be sure your postcards are standing up!  
All the time-especially in hot, damp weather





## EXHIBIT WINNERS



We know now who in the club considers making exhibit boards part of their monthly routine. And they all admit to the pleasure it gives them each month!

Chalk up the small showing to continued HOT, STICKY weather! Even so, the 69 members and guests present enjoyed the show!

HAROLD MOYER	FIRST	Bountiful
JIM WARD	SECOND	Plenty For All
EARL CARVER	THIRD	Fat Free

Undaunted **Dorathy** listed the exhibit board themes for the remainder of the year:  
**Aug**-Any Postcard with Printing on the Front  
**Sep**-None (Club Picnic at Heim's home)  
**Oct**-Squirrels (could be a tough one)  
**Nov**-Silhouettes (lots to learn here)  
**Dec**-Biblical (loads of beautiful examples)

### REMINDER

We do NOT restrict Expo Exhibit Boards at this time with the exception of Best of Show and People's Choice. Any other previous exhibits are eligible for 1994's show.

Don't forget there will be hundreds of non-members who didn't see your monthly exhibit boards. Why not add, alter or embellish for a second showing?

**Jim Rudisill's** full-color Exhibit Award Postcards are super! And they're limited in printing numbers to only the exhibitors

### DEADLINE

Exhibit Board Applications must be postmarked by **July 31, 1994** to be eligible. This is a no-exceptions rule! A copy is in your May **CARD** or phone 717-721-9273 for one. Mail applications to 1795 Kleinfeltersville Rd., Stevens, PA 17578-9773.



## PROGRAM



It was apparent when you entered the room that **Jose Rodriguez's** "Postcards About Postcards" would yield a wonderful study of the rare and unusual. His mammoth albums were loaded with not only the cards he showed on slides but hundreds more.

We all very much appreciate the 550 mile round trip **Jose** made to show just a small part of his collection- the retail shops in newsstands, drug stores, camps, PO's and soda fountains; the fabulous ferris wheel racks.

The photographic studios, advertisements for postcard cameras and the early postcard collector clubs. But certainly a highlight for those interested in publishing were the 3 dozen PCs showing printing plants, publishers' offerings and salesmen's appointment cards. They all seemed to be there - from the Albertypes to the Zimochromes.

A wonderful evening (hot as it was) by a genuine student of deltiology. **THANKS, JOSE.**

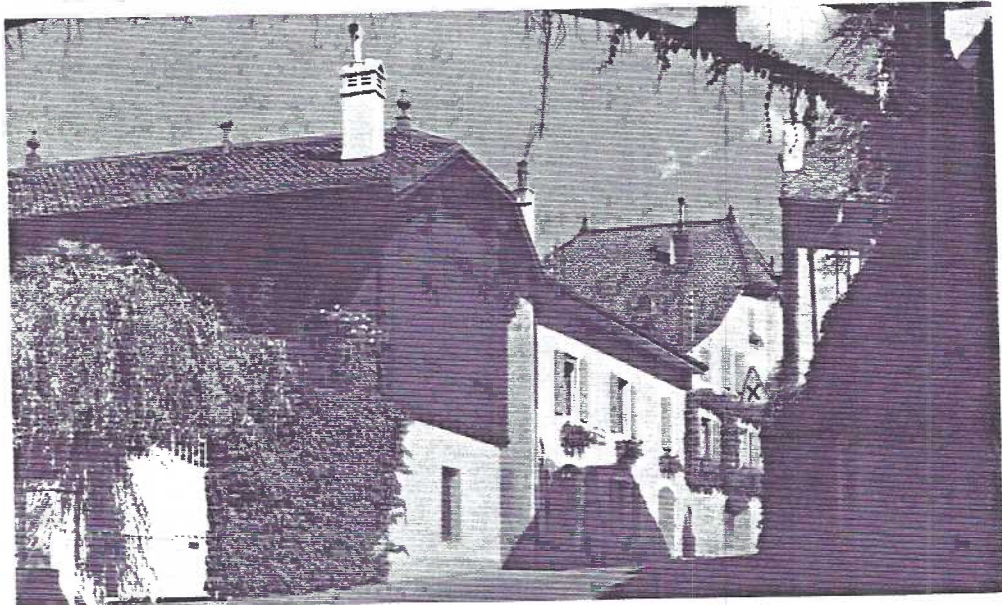
August's program is a slide presentation by "Lucky" **Harry Lines**. He and **Ruth** were in Switzerland - see illustration below.

### FUTURE PROGRAMS FOR '94

- Sep** - Club Picnic at **Bud** and **Barb Heim's** home. More details next month's **CARD**.
- Oct** - Postcard Auction
- Nov** - Panel of Experts
- Dec** - "Off and On" - slide show of transparencies and hold-to-lights (**Jim Ward**)

### DANCE PAVILION ROCKS!

Last month you saw the Maple Grove Dancing Pavilion 'rock itself' so hard it flipped (pg.4)! But don't blame my two proof readers. They never see the final postcard pasteup. My apology to all. **JFW.**



Swiss Street Scene

**Harry Lines** will show postcard images on slides through beautiful Switzerland. He and **Ruth** were fortunate enough to travel this picturesque country just this summer

### THE CARD

Staff **Dot Fry**, **Charlie Griffiths**, **Gerald Hostetter**, **Jim Rudisill**, **Jim Ward**, editor. Circulation **Harold Fry**, **Gwyn Fulmer**. Articles, suggestions, correspondence: 1795 Kleinfeltersville Rd., Stevens, PA. 17578-9773.