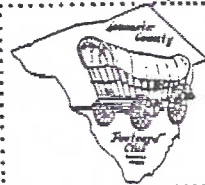


# The Card

MONTHLY PUBLICATION OF  
LANCASTER COUNTY POSTCARD CLUB  
LANCASTER, PENNSYLVANIA

MEETINGS: 3rd MONDAY  
FAITH UNITED  
CHURCH OF CHRIST  
1204 WABANK STREET  
LANCASTER, PA

Oct. 1994 - Vol.5, No.10  
NEXT MEETING  
October 17, 1994 7 pm  
Buy/Sell/Trade 5:30 pm



Yearly Membership is \$7 (plus \$3 per person, same address). Ads: \$15 full page, \$8 1/2 page. \$5 1/2 pg. Prepaid. Articles and Correspondence: 1795 Kleinfeltersville Rd., Stevens, PA 17578 Dues and General Correspondence to: LCPC c/o Mowrer, 786 Kames Hill Rd., Columbia, PA, 17512

## OBITUARY

We're sorry to hear from Bert Brandreth, member #55 that his wife Christine (#117) passed away in Spring. Bert is from Royersford and keeps in touch through the CARD. We extend our sympathy to him.



## EXHIBIT WINNERS



The Annual Picnic is always a memorable one, especially since Bud and Barb Heim have been our hosts. They have plenty of convenient parking, shade when we want it, nice weather without exception and comfortable facilities for tiny bladders.

And the covered dish meal is full of delicious surprises: 3-layered salad and red-beet eggs disguised as crabapples!!

Dot and Earl conducted the ONE-CARD EXHIBIT COMPETITION. We had a W-I-D-E variety of subjects (as you'll see) to entertain and teach the 31 members present. The subject:

### One of My Favorite Postcards

EARL CARVER FIRST with a home-made card (by Bill Weikert) of Earl and his dedicated slush pump (trombone).

BARB HEIM'S grand-daughter ASHLEY SECOND

a monkey with a spring wire tail

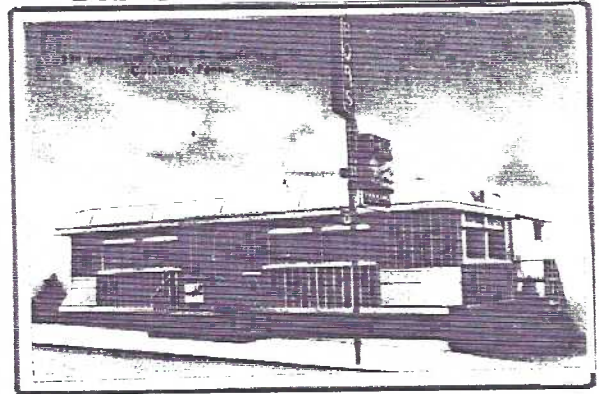
RUTH LINES THIRD a Spanish flamenco dancer

### HONORABLE MENTIONS

(In the interest of space just a description of each postcard follows.)

|                  |                                   |
|------------------|-----------------------------------|
| EARL CARVER      | "W" tongue twister                |
| MAE CLEGG        | Hallowe'en Don'ts                 |
| DREW CURTIS      | Kids' comments about parents      |
| POLLY CURTIS     | Nine Terrific Uses for PCs        |
| POLLY CURTIS     | Real leaves and seed add-ons      |
| MARY DARRENKAMP  | St. Joseph's Church interior      |
| DON DAVIS        | Multiple babies in auto accident  |
| DOT FRY          | Drake's oil well, Titusville, PA. |
| HAROLD FRY       | Old Faithful Inn                  |
| ELIZABETH GRAVER | The Danz Barber Shop, Lanc.       |
| FRAN HAMILTON    | Pin-up girl and orchids           |
| BARB HEIM        | A furry black bear                |
| BOB KRAMER       | Van Buren's home, Kinderhook NY   |
| HARRY LINES      | address: last creek before Isle   |

## POSTCARDS ON MAGNETS!!



Bob's Diner in Columbia. A postcard magnet!



Campbell's Kids magnet, shown actual size.

Leave it to W.B. "Bernie" Heisey, member #7 to come up with the first "local" postcards on magnets. Bernie's enthusiasm for Winross trucks is exceeded only by his love affair with the LINCOLN HIGHWAY and, of course, postcards are just the ticket to show it!

Bernie just had made a nice assortment of "postcards", many of locations along the Lincoln Hwy. He promises another nice group soon- Holidays! And maybe in 1995 we'll see Lancaster County views! They sell for \$2 or 3 for \$5 and he will have them at meetings.

Thanks for your enthusiasm and efforts,  
Bernie

Miniature postcards turn you on? Check the story pgs. 4 and 5 for the set of early Lancaster Miniature Postcards by Natl. PC Co.

|                  |                                   |
|------------------|-----------------------------------|
| HARRY LINES      | Quelich's Royal Garden Orchestra  |
| WALT MOWRER      | Covered bridge near Columbia (rp) |
| HAROLD MOYER     | Denver Public School              |
| RUTH MOYER       | The Blainsport Hotel (rp)         |
| KEITH STEHMAN    | Harbor seal pup                   |
| KEITH STEHMAN    | Old kittens PC w/squeaker         |
| HOWARD STEINBERG | Boxer, Wolf studio, Lanc. (rp)    |
| JIM WARD         | Button boy pc with limerick       |

Twenty-five (25) count 'em entries!! It looks like you picked a winner, Dot. Maybe we should try a single-card competition another time. And those of you who missed the owners' comments = some were hilarious!

FUTURE BOARD SUBJECTS: October - Squirrels, November - Silhouettes, December - Biblical.

## NEW MEMBERS

#338 TOM FRIDAY 137 Blossom Hill Dr., Lancaster, PA., 17601. 569-0136. TOM has an interest in postcards and other paper, with emphasis on local items. He buys for himself and as a dealer.

#339 MARION A. McKENDRICK Box 335, Elverson, PA., 19520. Ph. 610-286-0667. MARION is a dealer and will be opening her new PC shop at The Mill Property, Main St., Morgantown, PA. the week of Nov. 20. Area 610-286-8854.

#340 IRENE L. RANKIN 2102 Junction Rd., Manheim, PA., 17545. 898-3642. IRENE likes Lancaster County views.

#341 LYDIA NULL (same as above). LYDIA is IRENE'S mother. She likes postcard greetings. **Actual active, paid membership = 250!**

(And LCPC is not quite 5 years old!)

Remember - our Annual Membership Drive continues to Dec. 31. Each new member's dues are paid through Dec. 1995 for just \$7.

### LANCASTER COUNTY POSTCARD CLUB AUCTION #17

Following business meeting. All items are postcards unless noted. **Examine lots carefully.** Descriptions are each member's. u=used, un=unused, rp=real photo pc cc=continental chrome.

- 1 4 Marietta b/w
- 2 3 Lenhartsville, glacial deposit
- 3 10 Hotels/motels
- 4 6 Foodergong at Ephrata
- 5 5 Harrisburg chromes, un,
- 6 7 Gettysburg
- 7 10 Valley Forge
- 8 15 Niagara Falls
- 9 23 Passion Play, Black Hills/Lake Wales
- 10 25 Foreign
- 11 Folded adv.- Hrsbg. Capitol doors, Holmes Seeds Co.
- 12 Christmas (unusual, embossed)
- 13 11 Washington, DC, un
- 14 London folder + 3 European views
- 15 4 Ephrata, Cloister
- 16 3 Lititz- Springs, Square (L.B. Herr)
- 17 4 Strasburg- Main Sts., sandstone house
- 18 4 Lanc.- Gen. Hosp., F&M, Square, Prison
- 19 4 Lanc.- Gen. Hosp., Stevens HS., Duke St., Woolworth
- 20 7 Sunbonnets- Set of Days of the Week (pm 1906)
- 21 4 Millersville Normal Sch. (L.B. Herr)
- 22 Interior- Sheetz's Martha Washington candy store
- 23 4 Lanc.- Square, Library, Clay Sch., Wheatland (LB Herr)
- 24 Bausman, PA., real photo
- 25 Teddy Bear + 'Possum (TR/Taft) lg. mailing card, tear
- 26 Zinn's Park (over-sized) + 2 others
- 27 12 Thanksgiving incl. home-made
- 28 8 Christmas- children and biblical
- 29 13 Christmas incl. 5 home-made
- 30 12 Christmas- children and Santas
- 31 16 Christmas- fancy and embossed
- 32 Lanc.- set of 10 miniatures (Nat'l. PC. Co.)
- 33 Lanc.- 4 C.X. Carlson paintings (over-size)
- 34 Esquire set of 6 Outdoor Life, 1942
- 35 6 Lancaster
- 36 6 Lancaster
- 37 6 Lancaster
- 38 Rocky Springs popcorn stand, real photo
- 39 6 Lancaster
- 40 12 Cuba

## Don't Miss The Encyclopedia of Antique Postcards

with Price Guide

288 pages

1100 illustrations

by

Susan Brown Nicholson

\$24.95 Post Paid

Greater Chicago Productions

P.O. Box 595

Lisle, IL. 60532

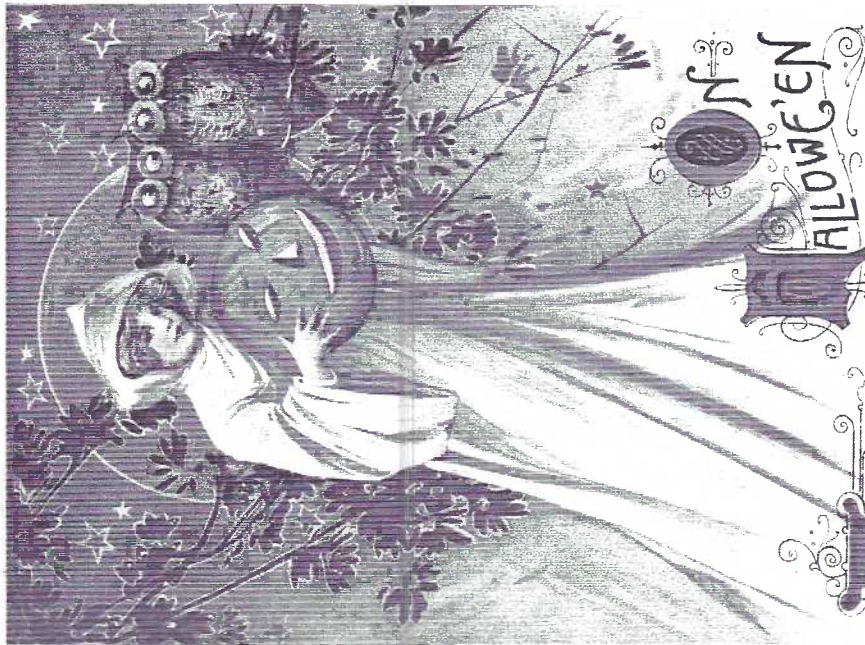
- 41 16 Rickett's Glen State Park, (PA.)
  - 42 6 Lancaster
  - 43 6 Lancaster
  - 44 6 Lancaster
  - 45 7 Christmas + 4 New Year
  - 46 1 Kink + 1 comic outhouse
  - 47 11 Christmas Reproductions
  - 48 26 Greetings
  - 49 8 Easter
  - 50 1 Exag., 1 reward, 1 lover, 1 farm scene
  - 51 2 Ephrata- McVey, Cloister dairies
  - 52 2 Language of Flowers
  - 53 1 Kutztown Marble & Granite
  - 54 2 Ephrata adv. cards
  - 55 4 Mt. Gretna, 1914
  - 56 4 Embossed greetings, birthdays
  - 57 4 Santa Claus
  - 58 24 Easter, some used
  - 59 20 Christmas, u
  - 60 6 Christmas, un
  - 61 9 Niagara Falls
  - 62 Lanc.- Buchanan & Young Cloaks/Dry Goods, un
  - 63 1 Negro military, St. Croix, real photo
  - 64 12 New Years, u
  - 65 100 Linens, u and un
  - 66 100+ Buildings (mostly linens, chromes) u, un
  - 67 10 Diff. Hershey linens, un (some pasted down)
  - 68 12 Diff. International Eastern Star Temple, un
  - 69 14 Diff. comics (mostly early) u/un
  - 70 50+ cc, u/un
  - 71 35 Diff cc- U.S.A. Air Force bases
  - 72 5- Innocence, Hope, Charity, Patience, Purity (pin hole)
  - 73 8 Lord's Prayer u/un
  - 74 3 Billy Sunday, 2 real photo, un
  - 75 33 Art PCs- mostly beautiful Stengels
  - 76 32 Art PCs- mostly beautiful Stengels
  - 77 5 folders- 3 diff. Indians + Yosemite + Yellowstone
  - 78 5 folders- Linc. Hwy., L/Congress/Havana/Tex., S.F.
  - 79 5 folders- Niagara, NYC/Carolinas/2 Phila.
  - 80 Book-History of Denver, PA. (excellent PC reference)
  - 81 Book-Fantasy Postcards by Wm. Ouellette
- REMEMBER TO BRING THIS PAGE TO THE AUCTION!**

## WINSCH - HAZEL

This trio of wonderful Hallowe'en cards is by publisher John O.Winsch. Left postcard is by popular artist Samuel Schmucker; the other two are by anonymous German artists.

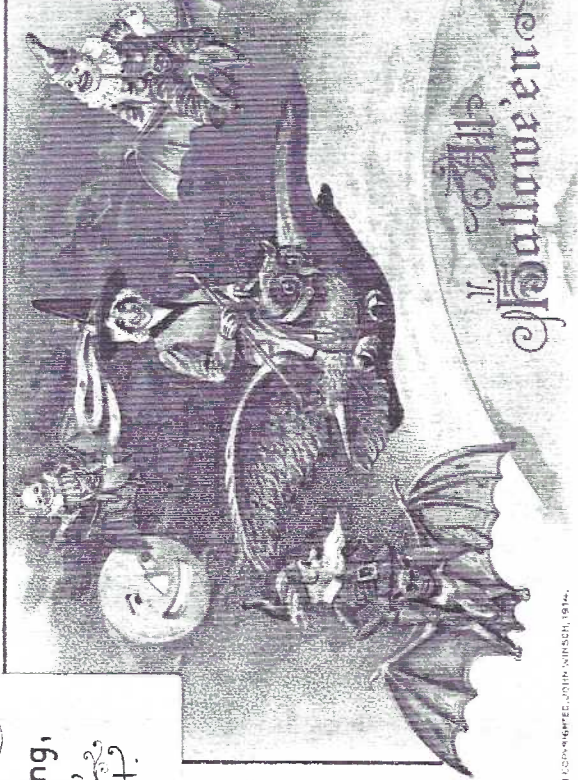
Our LCPC Library has the 1994 revised edition of the WINSCH HALLOWE'EN POSTCARD CHECKLIST by HAZEL LEHLER. It is invaluable to anyone collecting Halloween postcards or even contemplating these popular postcards. Hazel had expert help in writing it. She credits several friends among whom are these members: DOROTHY RYAN, ANDREAS BROWN, ANNE STEINBERG, SANDY MILLINS, DEDE and DAISY SCHAEFFER. What a group!

Knowing which are Winsch and which are Winsch-like; which are Schmucker witches and which witches are not....you'll find it all in Witch Hazel's Winsch Checklist. Here's to your learning which witches are Winsch!



When you hear the owls hooting,  
Get your Jack o'lantern out,  
Put on your shroud and hurry,  
For ghosts should be about.

DESIGN COPYRIGHTED JOHN WINSCH, 1911



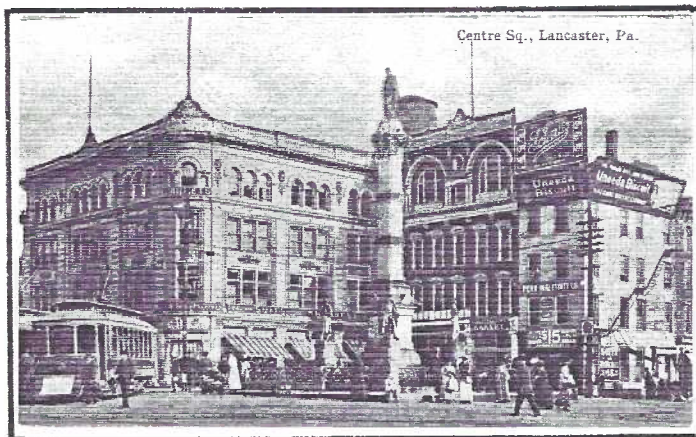
DESIGN COPYRIGHTED JOHN WINSCH, 1911

DESIGN COPYRIGHTED JOHN WINSCH, 1912

## UNIQUE MINIATURE LANCASTER, PA. SET

Under-sized postcards (those less than standard size =  $3\frac{1}{2}$ " x  $5\frac{1}{2}$ " ) are not common. You can find tiny **hidden views** without too much trouble, but the only set of actual "miniature" Lancaster City or County cards we've seen are by the National Post Card Co., Phila., Pa. and Atlantic City, N.J. Their actual size is  $2\frac{1}{8}$ " x  $3\frac{1}{2}$ ".

There are ten in the complete set and if you're lucky, you may find a set with the original envelope. Member **John Long #8** had a few sets ten years ago but "these have long since been traded away" he tells us.



### CAPTIONS IN MINIATURE SET

Captions are printed in red ink.

Note numerous errors and foot-notes.

Centre Sq., Lancaster, Pa.

Court House, Lancaster, Pa.

General Hospital, Lancaster, Pa.

Main Building, P.S.N.S., left to right, Mens' Dormitory, Centre, Administration Building, Right, Girls' Dormitory, Lancaster, Pa. (1)

North Queen St., looking North, Lancaster, Pa.

Penn State Normal School Library, Millersville, Lancaster, Pa. (2)(4)

Scene on the Conestoga River at Rodney (3)

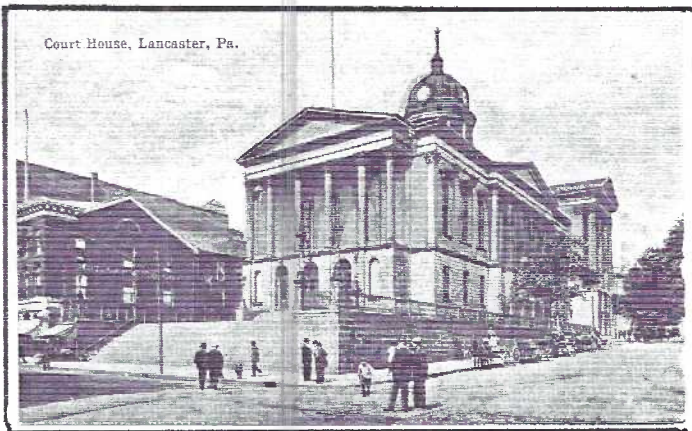
Springs Park., Lancaster, Pa.

Stevens Hotel, Lancaster, Pa.

View of the Lake & Campus, P.S.N.S., Millersville, Lancaster, Pa. (4)

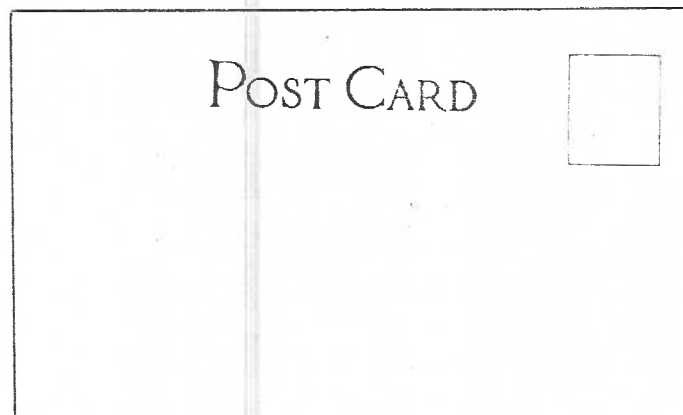
Witmers Bridge, Built in 1798, Lancaster, Pa.

- (1) **PSNS**=Pennsylvania State Normal School; **Lancaster** should read "Millersville"
- (2) **Penn State** is NOT ref. to today's PS.
- (3) **Rodny** should be Rocky. This sort of typo frequently happened when written orders were mis-read by the unknowing printer.
- (4) Over-kill, here. **Lanc.** is unnecessary.

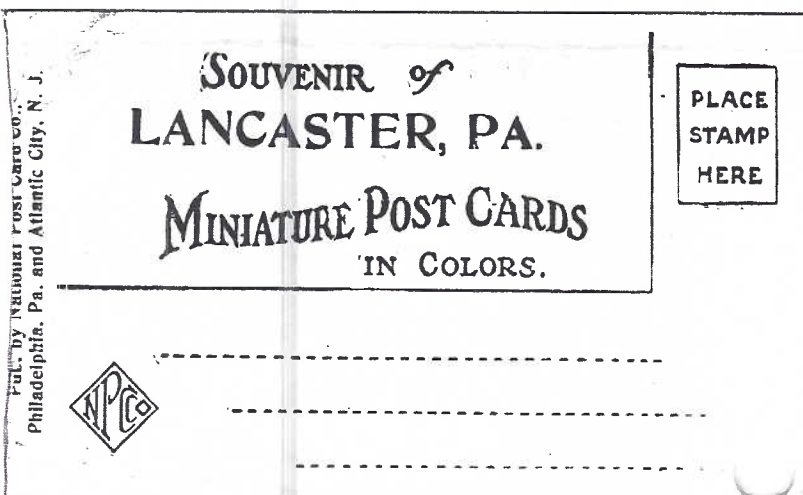


Shown here is the **complete set**. Each of the "miniatures" is in full color like its counterpart in standard size but the miniatures have a pebbly surface. The standard-size cards all have white borders.

Seven of the views are of Lancaster City proper (including near-by Rocky Springs). The other three are of the college (then normal school) campus at Millersville.



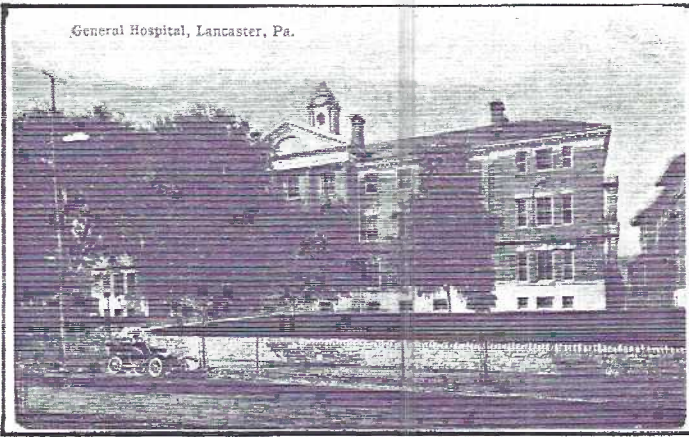
Reverse showing no indication of publisher.



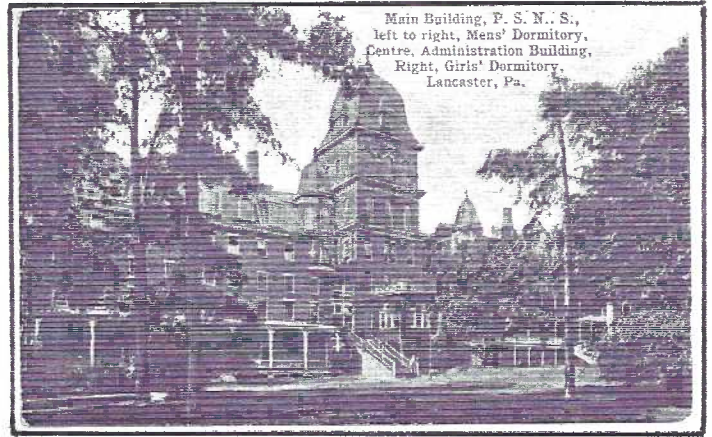
Very scarce envelope that housed set of ten cards. It indicates publisher at left edge. It was evidently possible to mail the entire envelope with 10 PCs. we are unaware of any cancelled envelopes.

# UNIQUE MINIATURE LANCASTER, PA. SET

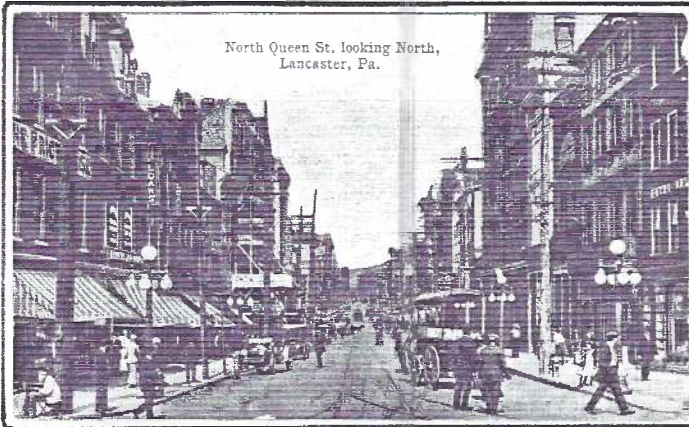
General Hospital, Lancaster, Pa.



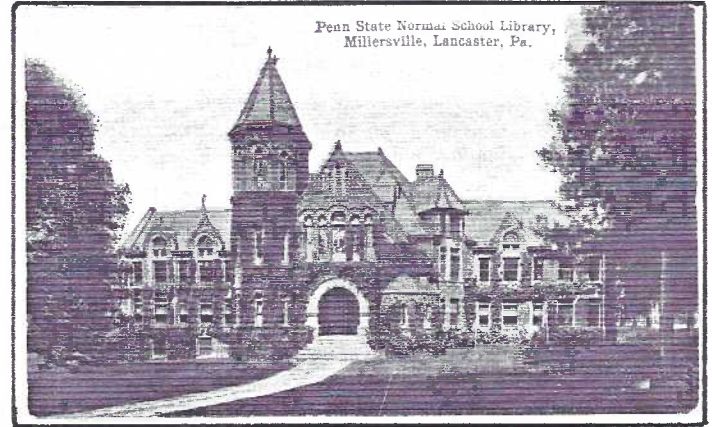
Main Building, P. S. N. S.,  
left to right, Mens' Dormitory,  
Centre, Administration Building,  
Right, Girls' Dormitory.  
Lancaster, Pa.



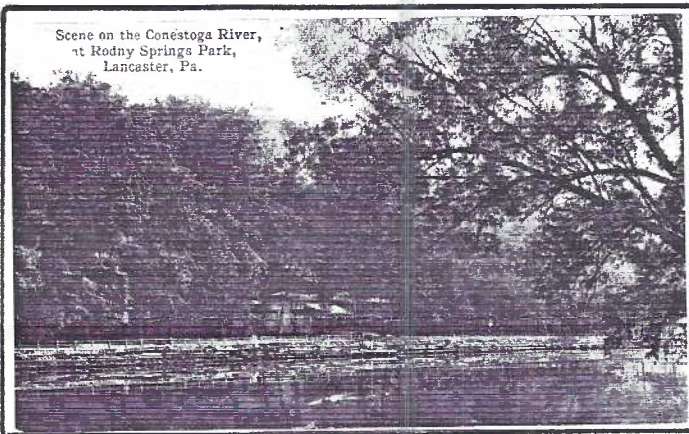
North Queen St. looking North,  
Lancaster, Pa.



Penn State Normal School Library,  
Millersville, Lancaster, Pa.



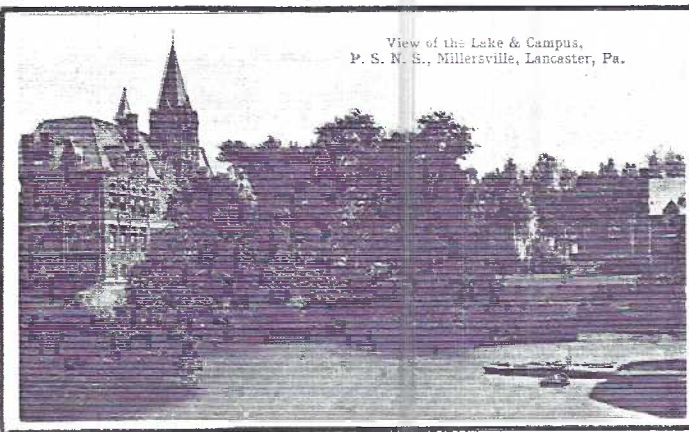
Scene on the Conestoga River,  
at Rodney Springs Park,  
Lancaster, Pa.



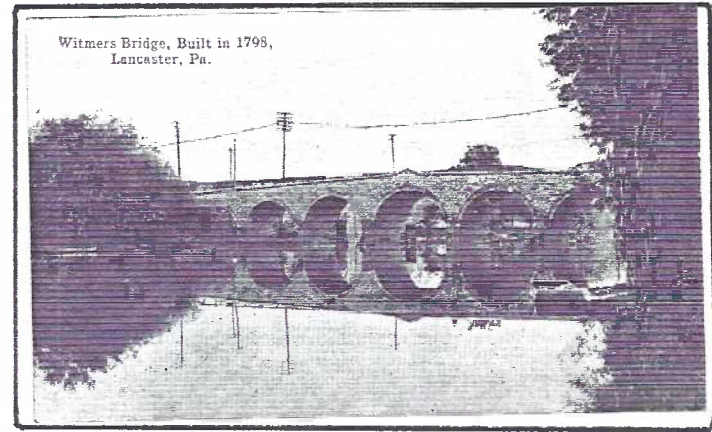
Stevens Hotel, Lancaster, Pa.



View of the Lake & Campus,  
P. S. N. S., Millersville, Lancaster, Pa.



Witmers Bridge, Built in 1798,  
Lancaster, Pa.



## TWA - KODAK PARTNERSHIP

### Postcard Set for the Plane or Camera Buff

Some of us will never get off the ground but we still like the mystique of tons of steel flying overhead. Some of us carry a camera everywhere we go (and we're not Japanese tourists). For each of these postcard collectors there is a BEAUTIFUL little set of linens and not difficult to assemble!

**TWA (Trans World Airlines)** inaugurated international flights between NYC and Paris in 1946. It soon expanded to routes throughout Europe, the Middle East, Africa and Asia.

What better company (pun intended) than the most famous name in American photography? **Kodak** took excellent full-color pictures of **TWA's** popular destinations.

All PCs are marked "Litho in USA" followed by a stock number and these issue dates: 1/46, 9/47, 8/48, 6/50, 1/51 and 10/51. We have seen **Kodak's** trade name **Kodachrome** on the three earliest printings. **Color-foto** is on the latter three printings.

Only eight(8) scenes have been found the assumption being these constitute a set. LET US KNOW IF YOU DISCOVER OTHERWISE. All have horizontal format except Eiffel Tower.

**Acropolis at Athens**

**Arc de Triomphe...Paris**

**Eiffel Tower at Paris**

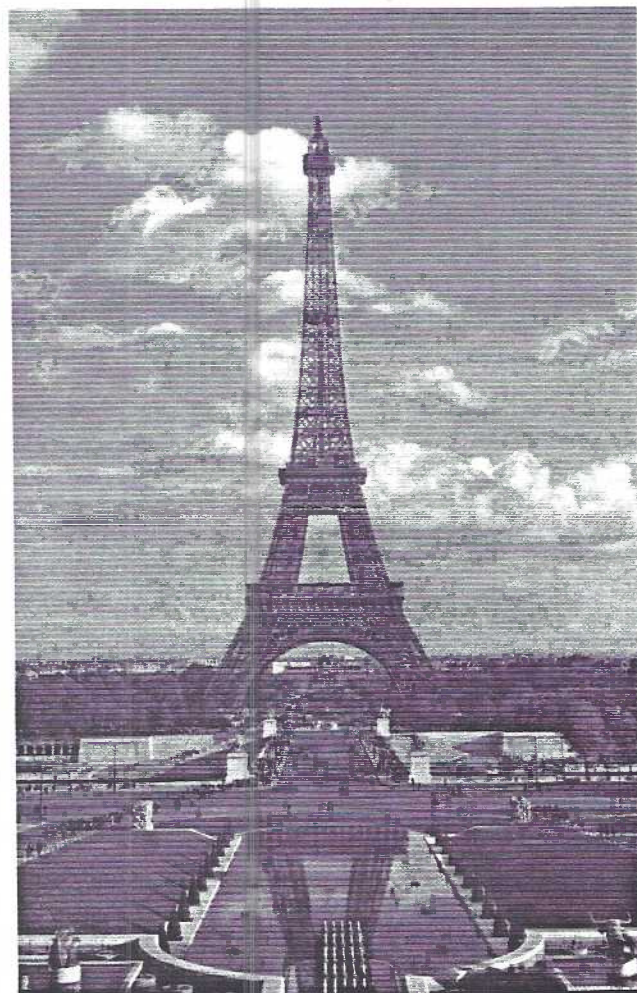
**St. Peter's, Vatican City, Rome**

**Sphinx at Cairo** Sphinx and two pyramids

**Sphinx at Cairo** Camel riders, Sphinx, pyramid

**Swiss Street Scene**

**The Grand Canyon**



Eiffel Tower at Paris      Kodachrome by Trans World Airline

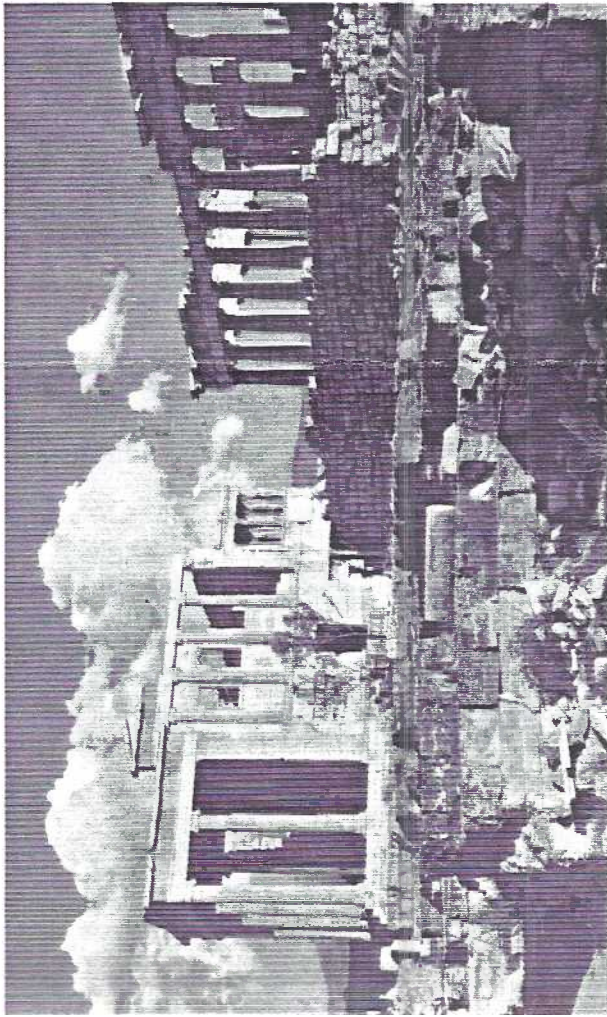
All of the PCS have a brief description in English and French on the address side and a stamp box labeled "Postage One Cent".

THE CARD  
Staff Dot Fry, Charlie Griffiths, Gerald Hostetter, Jim Rudisill, Jim Ward, editor. Circulation Harold Fry, Gwyn Fulmer. Articles, suggestions, correspondence: 1795 Kleinfeltersville Rd., Stevens, PA. 17578-9773.



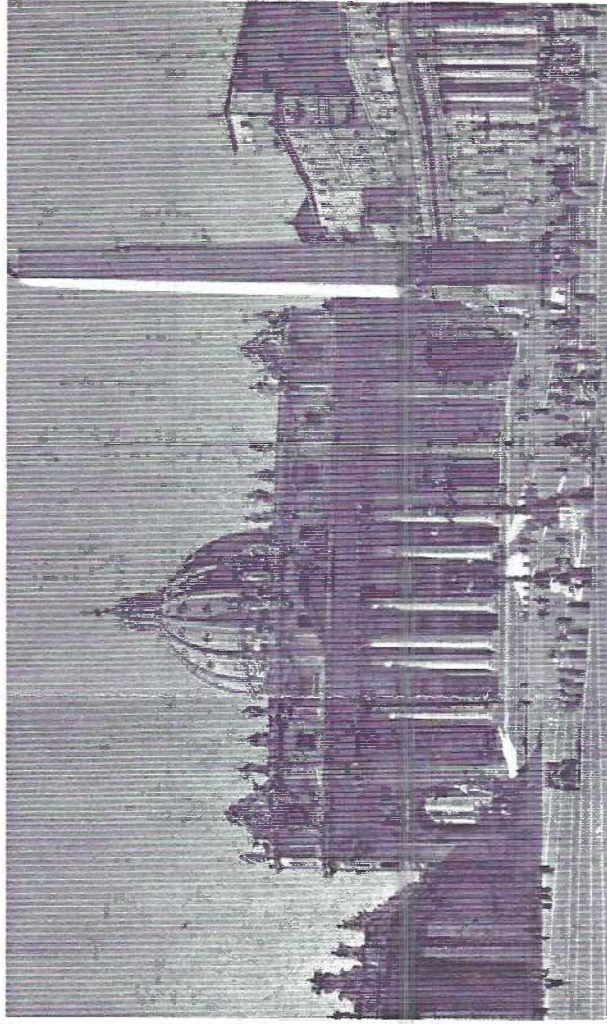
The Grand Canyon

Kodachrome by Trans World Airline



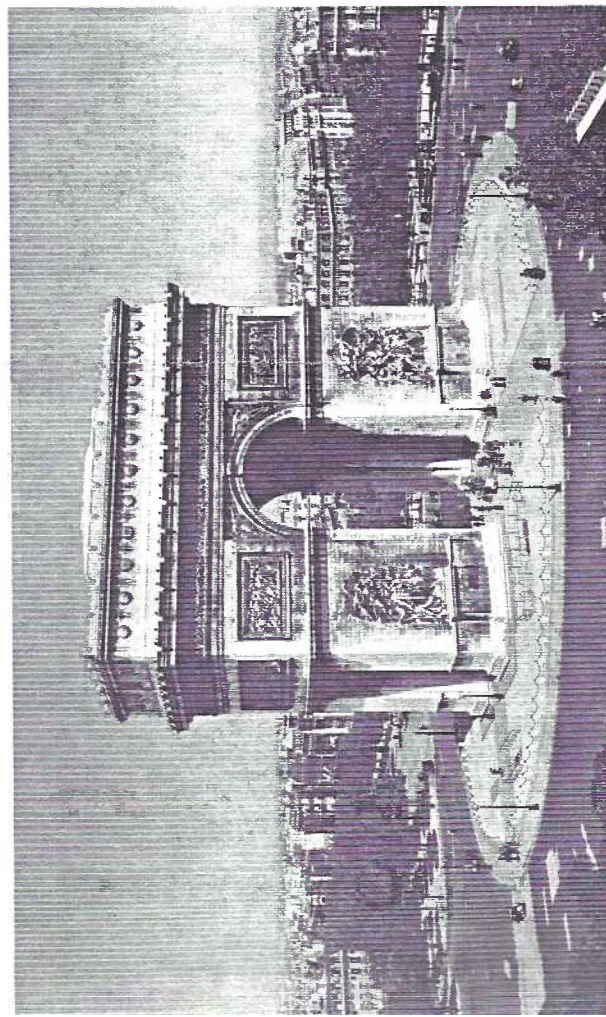
*Acropolis at Athens*

*Color-foto by Trans World Airlines*



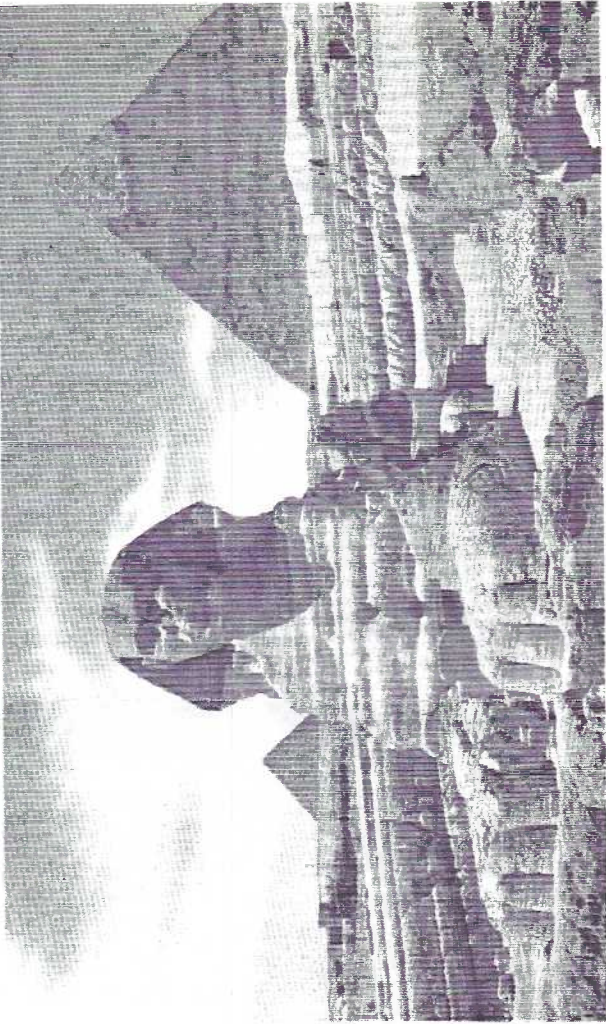
*St. Peter's, Vatican City, Rome*

*Kodachrome by Trans World Airline*



*Arc de Triomphe...Paris*

*Kodachrome by Trans World Airline*



*Sphinx at Cairo*

*Kodachrome by Trans World Airline*

100th ANNIVERSARY  
Trinity Evangelical Congregational Church  
Terre Hill,Pa.



Reverse caption- (Headline to our story plus) Ground breaking for the new church occurred on Oct.17,1894. Cost of construction for the church was \$7,000. It was proudly dedicated debt free by Bishop R. Dubbs on August 4,1895.

Member #168, Norm Zimmerman asked several members just a few months ago about area PC publishers. He was serving on a committee to honor the 100th anniversary of his church. The fine full-color snow scene above is a result of the committee's efforts. The excellent photo is by Wayen Thaxton. Publisher is SCENE-ICS of Mechanicsburg, PA.

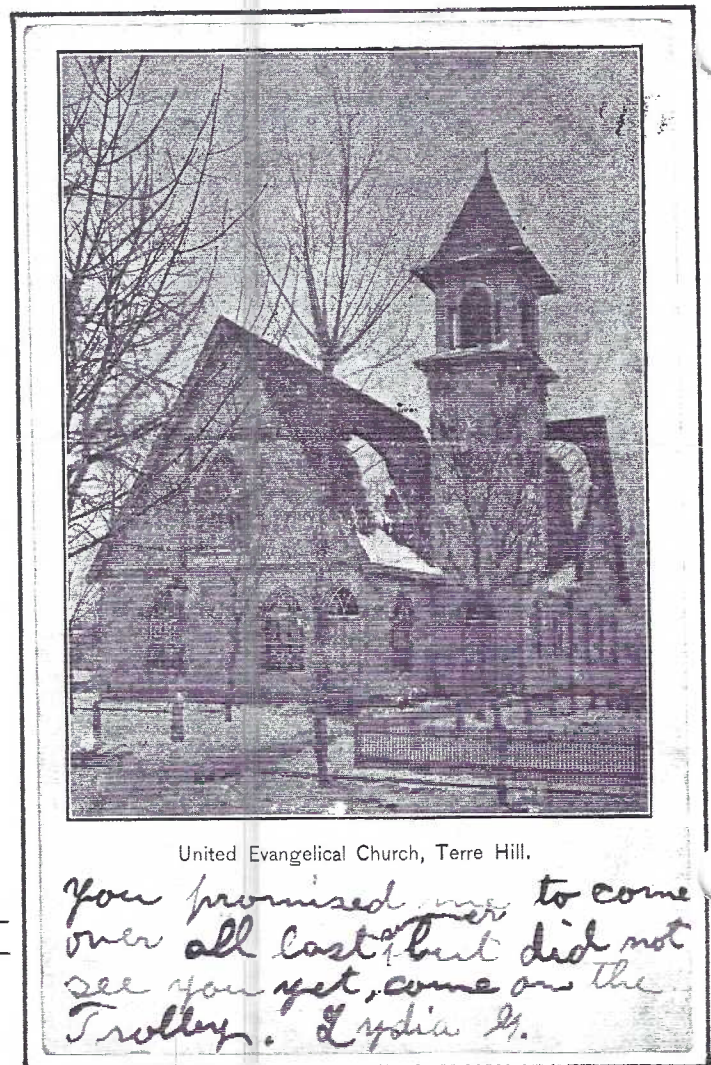
The undivided back b/w card (right) is cancelled Nov.8,1905. On thick stock, the publisher is unidentified but could possibly be Time Print (see Aug.1992 CARD for our Terre Hill Checklist.).

Note the large addition to the church on the 1995 card.

Another und/back postcard in color was by Express Printing for Geo.W. Gehman's New Store in Terre Hill and shows the parsonage.

Snow scenes are scarce on postcards and here we have two taken 90 years apart of the same subject!

In a few words Lydia reminds Mary Fitterling of Mohns Store, Berks Co., that she "promised to come over all last summer". She's to "come on the Trolley".



United Evangelical Church, Terre Hill.

*You promised me to come over all last summer but did not see you yet, come on the Trolley. Lydia S.*