

The Card

MONTHLY PUBLICATION OF
LANCASTER COUNTY POSTCARD CLUB
LANCASTER, PENNSYLVANIA

MEETINGS: 3rd MONDAY
FAITH UNITED
CHURCH OF CHRIST
1204 WABANK STREET
LANCASTER, PA

Feb. 1995 - Vol. 6, No. 2

NEXT MEETING

February 20, 1995 7 pm
Buy/Sell/Trade 5:30 pm



Yearly Membership is \$7 (plus \$3 per person, same address). Ads: \$15 full page, \$8 1/2 page. \$5 1/4 pg. PREPAID. Articles and Correspondence: 1795 Kleinfeltersville Rd., Stevens, PA. 17578
Dues payable to: LCPC c/o V. Sandra Shaub, 45 Stoneyhill Rd., Quarryville, PA. 17566.

PROGRAM

January's SHOW 'N TELL Program always offers a variety of subjects. We saw, albeit in brief:

Rob Kramer's mother on a real photo card
Harry Lines and family on a real photo card
Keith Stehman's second most favorite animal - the horse, on a Wyoming PC. Keith is one of our younger members and we very pleased that he participated!

Don Davis on a card with his mother.

Helen Metzler's tales of the Model School at MSTC, including a swarm of termites!

Helen Carver's mother at age 18 on a RP PC.

Earl Carver's church where he was ordained.

It's the oldest Methodist Ch. in continuous service - St. George in Phila.

Polly Curtis: a great set of 20 Western Heroes that match recent USPS postage stamps.

Mary Darrenkamp: the old Prince St. cotton mill where her mother worked and the ponds and floral clock at Conestoga Memorial Park

Fran Hamilton with an alleged code message.

Mel Abreu (a visitor) who found postcards in an old piano, torn up for shims under keys.

Eliz. Graver with a story of scherenschnitte

Lewis Bechtold's commemorative Civil War monument at Terre Hill.

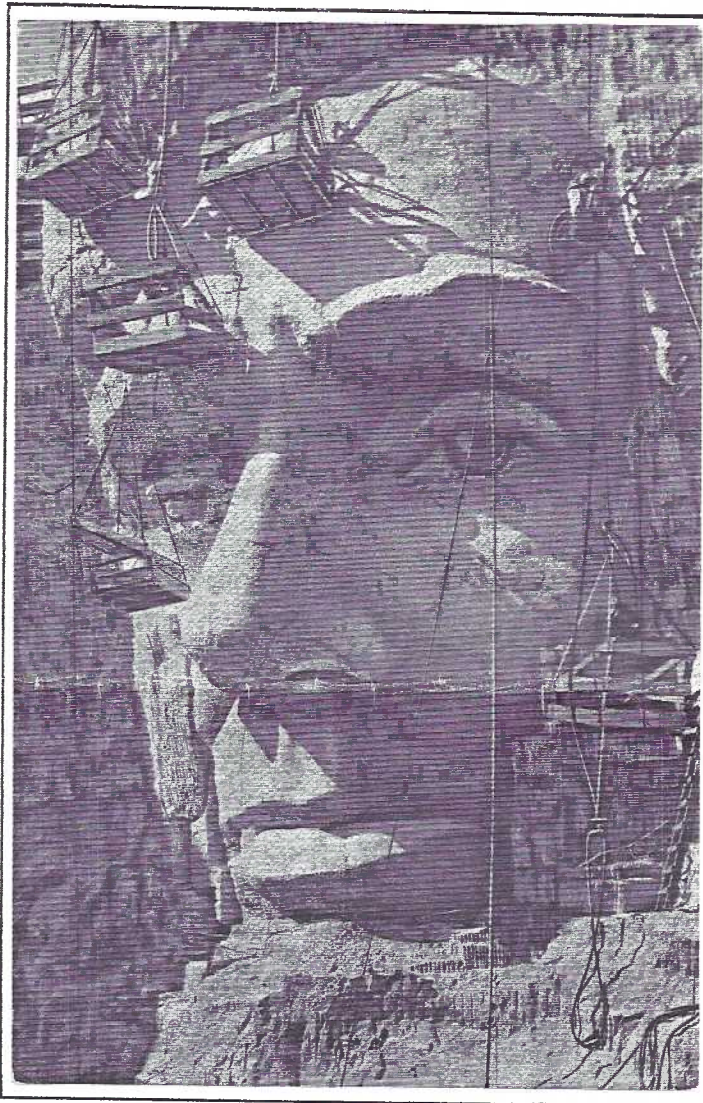
Jim Ward's American Miniature Golf Course at Leola. 'Know of any more locals on PCs?

Norman Zimmerman's dip in the Denver pond after the final school tests in May.

Thanks to all who participated in the program. Let's hear from YOU next time!

February's program time is allocated to a full auction (see page 9).

March's program will be a slide show by **Bud Heim** "OLD HOME WEEK IN COLUMBIA, PA."



We commemorate the Month of Presidents with an essay on Mt. Rushmore postcards. Description on the above reads: Closeup of the head of Abraham Lincoln on Mt. Rushmore National Memorial, in the Black Hills of South Dakota. The pitted spots on nose, above eyes and in other places are marks left by drill holes, all of the first cutting being done with explosives. This head is sixty feet from crown to chin, scaled to the size of a man 465 ft. in height. E.C. Kropp printed PC #5008N for Johnston & Bordewyk, Rapid City, S.D. A Bell photo. This linen-type card appeared before the face of Lincoln was dedicated in 1937.

NOTICE

When purchasing **The First Five Years, A History of the LCPC**, make checks payable to Jim Ward since he paid the printing bills of \$305.87. The saddle-stitched edition with 32-pages and wrap-around cover is \$2; with colored cover = \$4. Add \$1.25 for postage, \$2 for two copies.

The 25 with b/w covers cost \$1.99; The 75 with colored covers cost \$3.42 plus materials consumed in typing, pasteup and layout. **NOTE-** at this writing there are 39 colored cover and 12 b/w cover copies remaining.

THE CARD

Staff Dot Fry, Charlie Griffiths, Gerald Hostetter, Jim Rudisill, Jim Ward, editor. Circulation Harold Fry, Gwyn Fulmer. Articles, suggestions, correspondence: 1795 Kleinfeltersville Rd., Stevens, PA. 17578-9773.

MOUNT RUSHMORE

The Mount Rushmore National Memorial was suggested by Jonah Robinson of the South Dakota State Historical Society. It was dedicated in 1925 and work began in 1927.

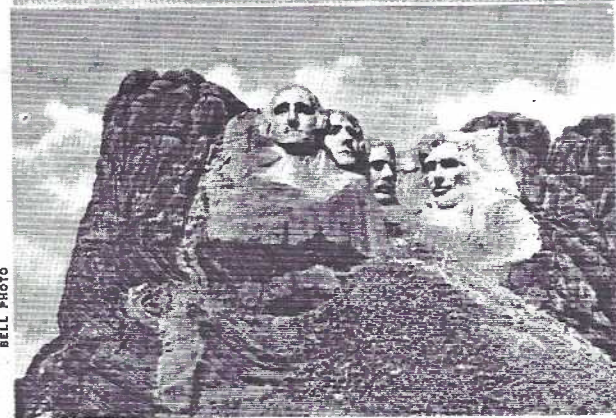
Gutzon (John) Borglum was chosen because of his fondness for and ability to sculpt huge likenesses. Born in Idaho, March 25, 1867 he studied art on the West Coast, in France and England.

The bronze group "The Mares of Diomedes" at the Metropolitan Museum and the Twelve Apostles for the Cathedral of St. John the Divine (NYC) are two early works. But Gutzon soon devoted his interest to "the emotional value of volume" and the 6-ton marble head of Lincoln was executed for the Capitol Rotunda in Washington, D.C.

45-MT. RUSHMORE, AS IT LOOKED BEFORE

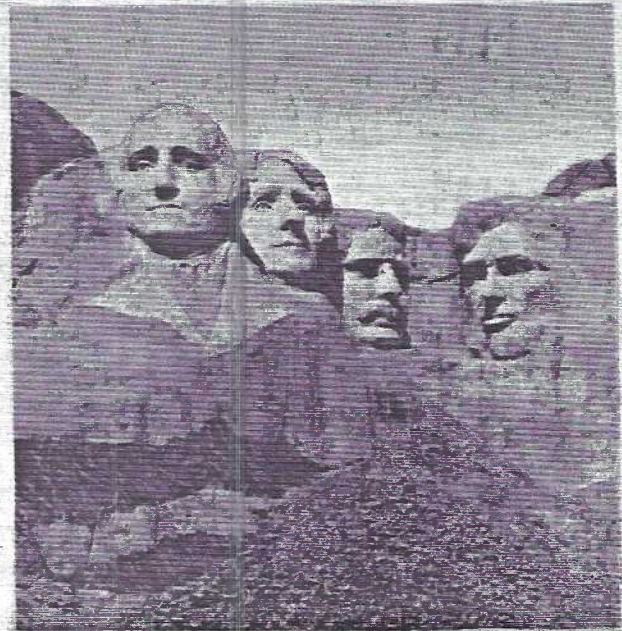


MT. RUSHMORE NATIONAL MEMORIAL
WORLD'S GREATEST SCULPTURAL WORK BEGAN IN 1927. GUTZON BORGLUM, WORLD'S ARTIST AND SCULPTOR, PLANNED AND SUPERVISED THE MONUMENT. FINANCED BY CONTRIBUTIONS AND FEDERAL FUNDS. BUSTS ARE PROPORTIONATE TO MEN 465 FT. HIGH. TOP OF WASHINGTON'S HEAD TO TIP OF CHIN 60 FT. ROCK IS AGELESS GRANITE. BUSTS ARE OF WASHINGTON, JEFFERSON, THEODORE ROOSEVELT AND LINCOLN.



MT. RUSHMORE, AS IT LOOKS TO-DAY

Curt Teich #8B-HL260 linen card (above) was for The Burgess Co., Inc. Keystone, S.D. A duplicate of these scenes is found on a continental card under the Curteichcolor logo #DL6056 and distributed by Rushmore News, Inc., Rapid City, South Dakota.



103° 27' W. LONG ELEVATION 5200 FT. 43° 53' N. LAT.

44 THE SHRINE OF DEMOCRACY

MT. RUSHMORE NATIONAL MEMORIAL

WORLD'S GREATEST SCULPTURAL WORK BEGAN IN 1927. GUTZON BORGLUM, WORLD'S ARTIST AND SCULPTOR, PLANNED AND SUPERVISED THE MONUMENT. FINANCED BY CONTRIBUTIONS AND FEDERAL FUNDS. BUSTS ARE PROPORTIONATE TO MEN 465 FT. HIGH. TOP OF WASHINGTON'S HEAD TO TIP OF CHIN 60 FT. ROCK IS AGELESS GRANITE. BUSTS ARE OF WASHINGTON, JEFFERSON, THEODORE ROOSEVELT AND LINCOLN. MEMORIAL DEDICATED BY CALVIN COOLIDGE, 1927. DEDICATION OF WASHINGTON BY J. S. CULLINAN 1930, JEFFERSON BY F. D. ROOSEVELT 1936, LINCOLN BY SEN. BURKE 1937, ROOSEVELT BY GOV. BUSHFIELD 1939. SCULPTOR DIED 1941, SON CARRIES WORK TO COMPLETION.

BELL PHOTO

This Curt Teich #8B-HL259 (mate to PC below) is postmarked Rapid City, S.D., Aug. 13, 1951. The message reads "I am writing this in the museum which pictures the origin and processes of doing the big carvings. They are gorgeous and the scenery all around us is most beautiful. We had about 23 miles of riding through the Bad Lands where there is little vegetation but striking formations of rock-like castles, etc. Love, Blanche". Card was mailed to the Mrs. Mahana, Watertown, N.Y.

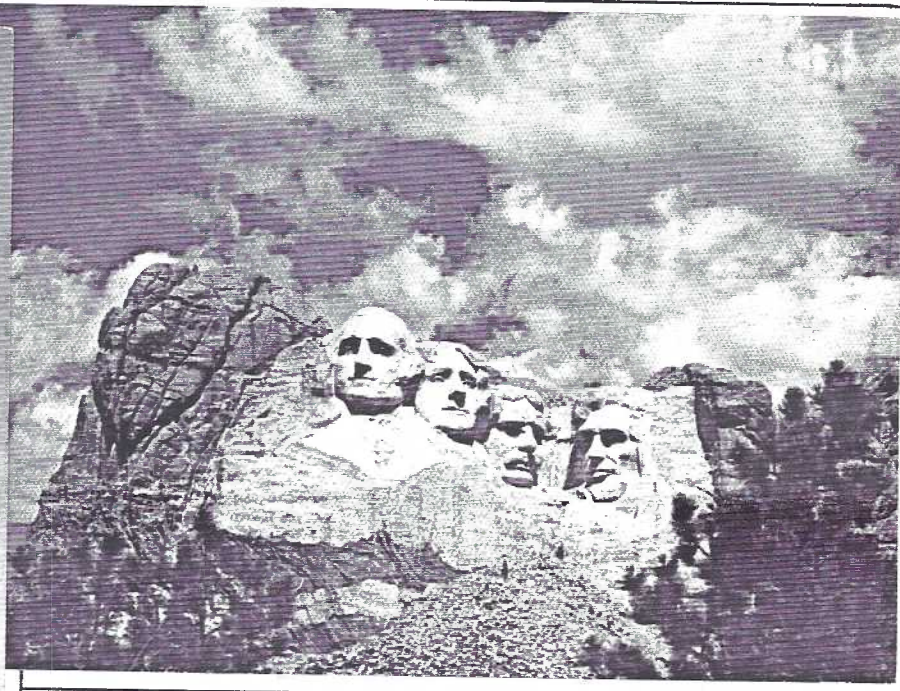
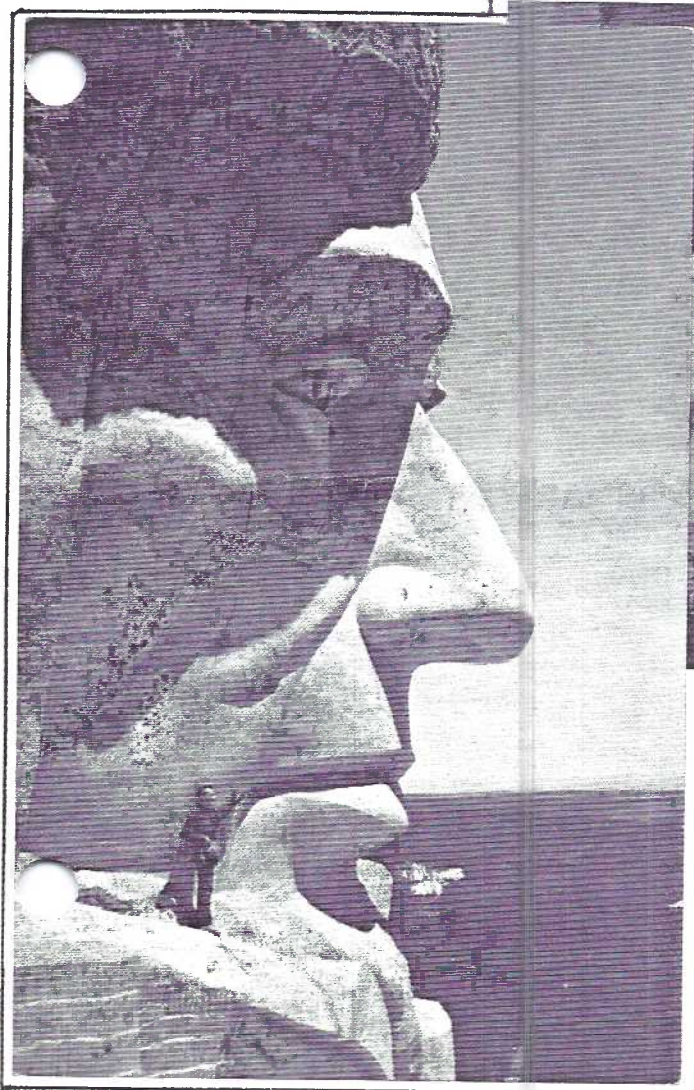
His idea for a titanic sculptural procession of General Robt. E. Lee and confederate soldiers at Stone Mountain Georgia was turned over to others in 1925. A manifestation of his role in that project was the Stone Mt. Commemorative Half Dollar he designed in 1923. (It was minted in 1925.)

His engineering prowess invented new methods that took advantage of the capacity of dynamite and pneumatic hammers to carve large quantities of stone quickly. Six and half years of actual work completed the job in late 1941 with his son, Lincoln, completing the details. Gutzon died March 6, 1941.

About 2,000,000 people visit the memorial each year. Ref: Encyclopaedia Britannica.



This striking "rise aerial" photo provides a perspective not found on most Mt. Rushmore postcards. Through this Kodak real photo card those of us who haven't been there can better appreciate the immensity of the neighborhood and understand why the sculptor chose the location.

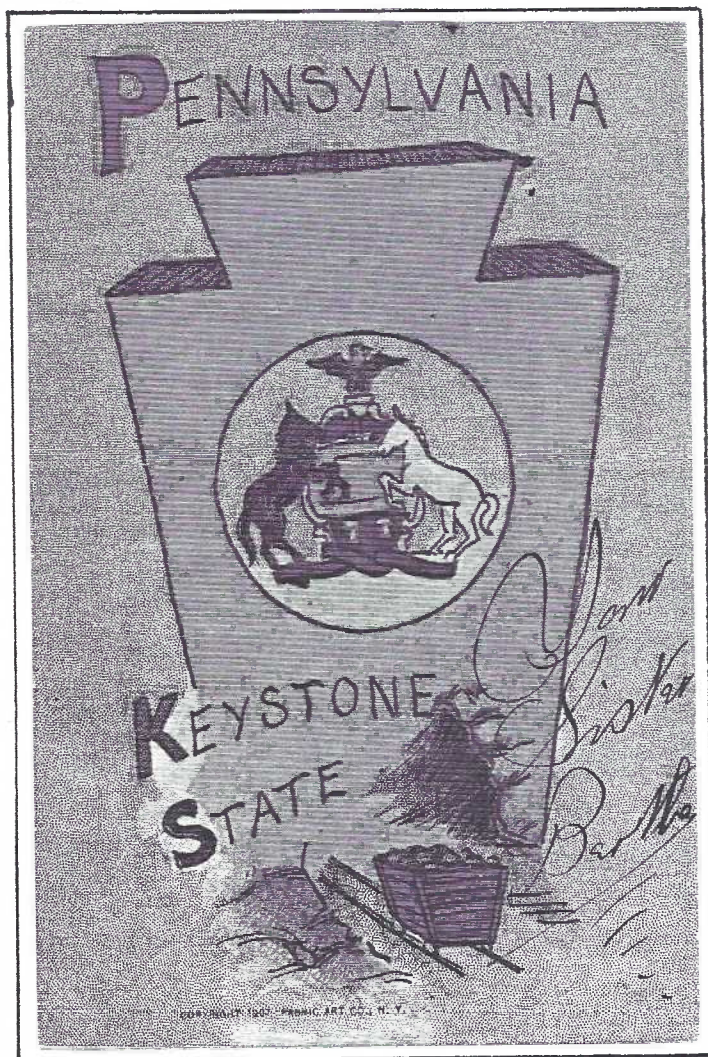


#P50862 above is a Plastichrome by Colour-picture, Boston., Mass. for Rushmore Photo, Rapid City, S.D. Ektachrome by Florence J. Beckers. Description rightly describes "the spectacular Dakota sky".

#C10138 left printed by Mike Roberts, Berkeley, CA. for The Burgess Co., Keystone, S.D. explains "...the gigantic size of Mt. Rushmore may be comprehended by comparing the National Park Ranger standing alongside. A man 6 ft. in height can stand in Lincoln's eye".

A Few Hints For This Month's Boards

A postcard from Fabric Art Co., N.Y. has amateurish art and features PA.'s keystone, coat-of-arms and a coal mine car with 1907 copyright date.

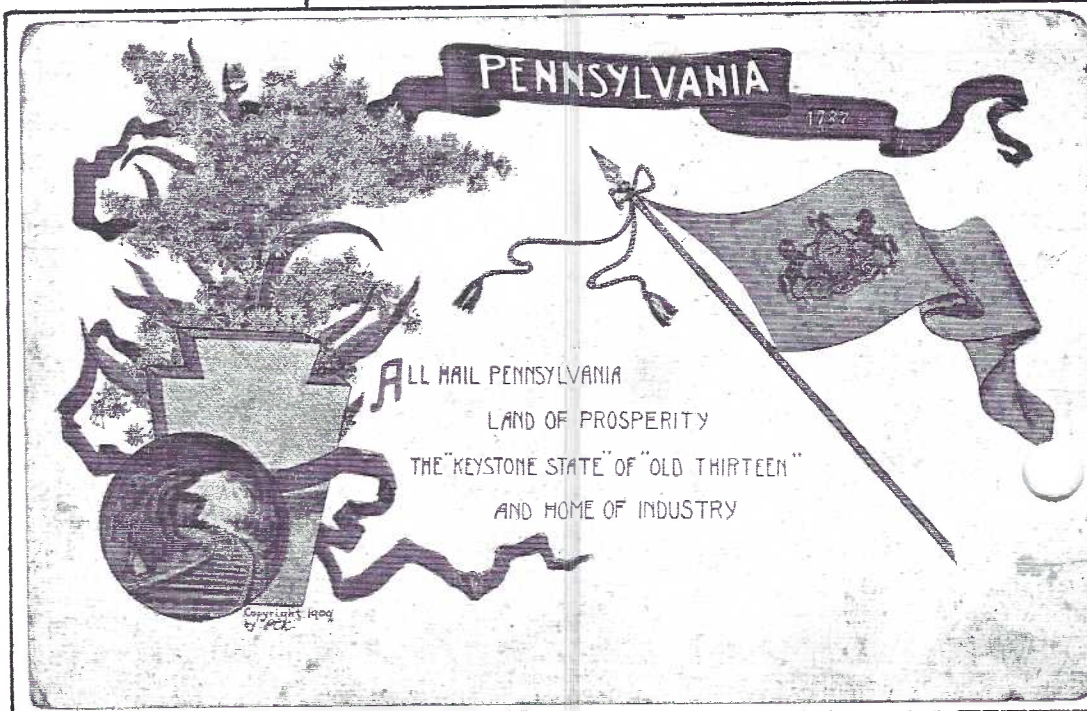


Collectors of several categories might bid heatedly over the PC(right), a welcomed addi-

tion to collections of STATES, LARGE LETTERS LOVELY LADIES as well as STATE GIRLS. Goldenrod has since (1907) been replaced by mountain laurel as our state flower. The undivided back PC is by Platinachrome Co., N.Y. and was postmarked from Grand Central Station, NY on May 6, 1910.



Paul C.Koeber Co., NY and Kirchheim, Germany published this 1909 Pa. card with ubiquitous keystone, banner with date the Commonwealth signed the Constitution, flag w/coat of arms coal mine entrance and what appears to be common/yellow sneezeweed. (Mt. Laurel was not adopted by the General Assembly as the State Flower until 1933.)



PENNSYLVANIA POSTCARDS

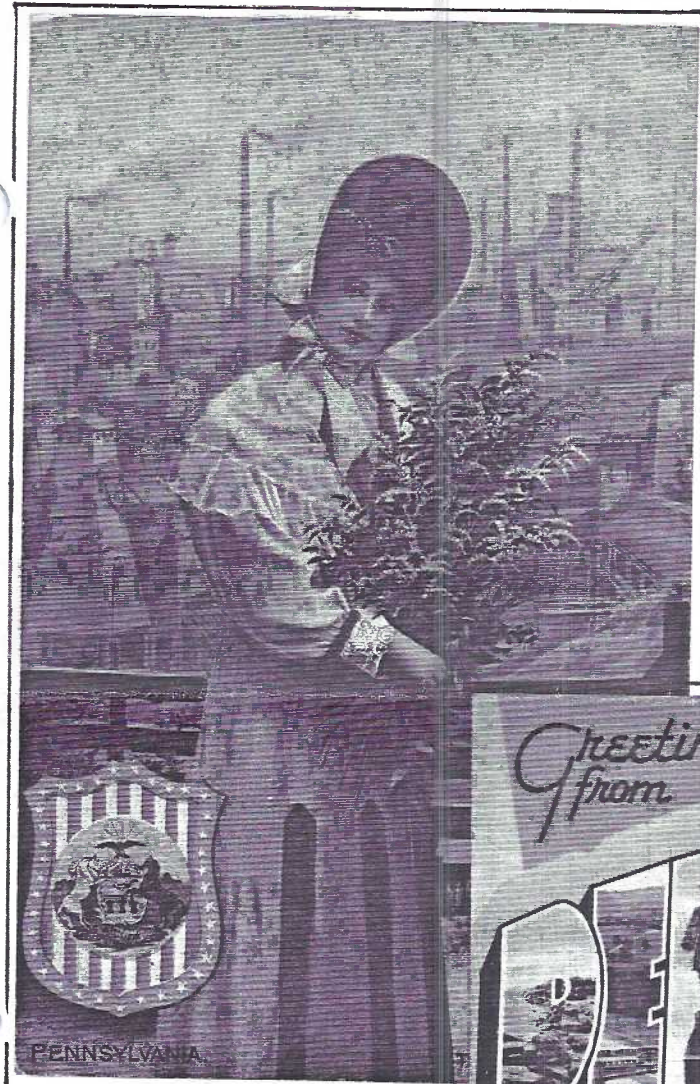
Another beautiful young lady represents Pennsylvania. This time she's **The Keystone Belle** in Tuck's STATE BELLES Series #2669 of which there were 45 postcards. Oklahoma, our 46th state, had not yet been admitted to the Union (Nov.16,1907).*

She stands before a rail fence, representing farmland. It is superimposed on an industrial backdrop, looking very much like the area around Pittsburgh.

A patriotic shield of red, white and blue contains the Commonwealth's seal.

*Can you name the 47th,48th,49th and 50th?

47-NM,48-AZ,49-AK,50-HI

CAVES and CAVERNS
OF PENNSYLVANIA

Tichnor's #71162 linen was published after the Commonwealth adopted the Mt. Laurel, 1933, and after the 1940 census (shown on the reverse as 9,900,180). This card is postmarked in 1943 and certainly a candidate for a LANCASTER collection.

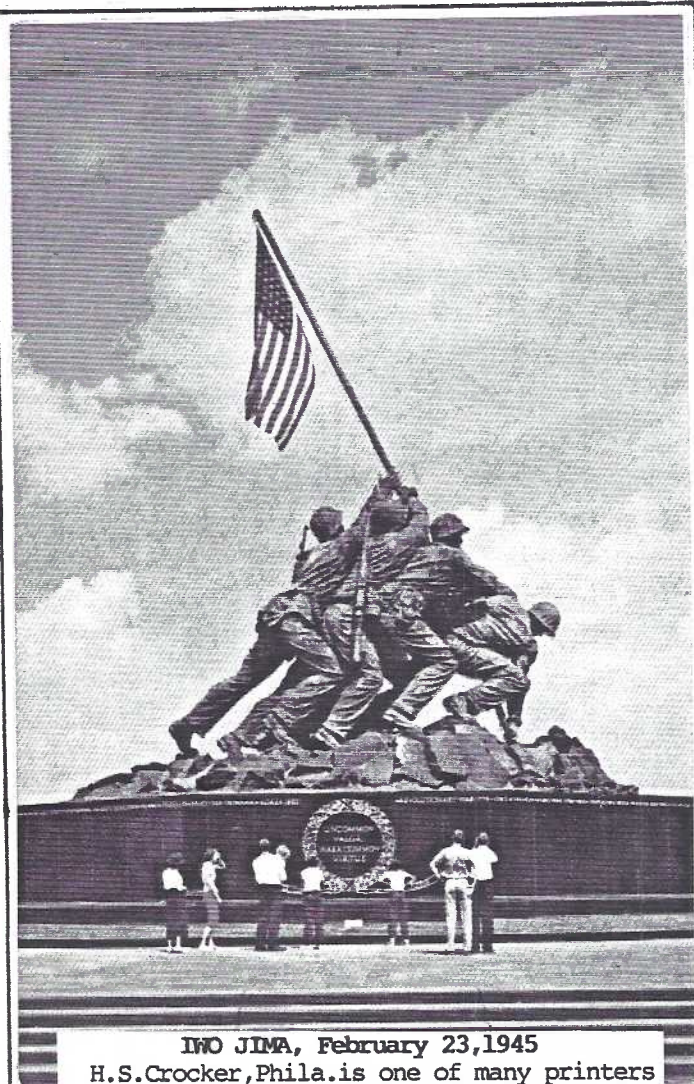
22 lines of cave descriptions nearly fill the message side of this continental chrome by Mike Roberts, Berkeley, CA! Publisher is Nelson Jones, Lakewood, Ohio.

Dozens of other chomes exist of Pennsylvania maps. These would be a collection by themselves.

COMMITTEE CHAIRS ANNOUNCED

President Bob Kramer presents his committee heads for 1995. If you believe you can contribute in a specific field, offer your suggestions to these members:

PUBLICITY:Lewis Bechtold;MEMBERSHIP: Sandra Shaub; LABEL MAKER:Gwyn Fulmer;MAILING:Harold Fry; PROPERTY:Harold Moyer; CLUB TABLE: Betty Brown; EXHIBIT BOARDS:Dot Fry; NPW CARD:Jim Ward; NPW EXHIBIT (Park City):Jere Greider;HISTORIAN:Earl Carver; THE CARD:Jim Ward;AUCTION:Norm Zimmerman; PROGRAMS:Lewis Bechtold; LIBRARY:Laura Spece; SOCIAL:Barb Mowrer; 50/50 SALES:Harry Lines.EXPO GENERAL CHAIRMEN:Bob Kramer and Walt Mowrer;EXHIBITS:Jim Ward;PUBLICITY:Lewis Bechtold; DEALERS:Jose Rodriquez.



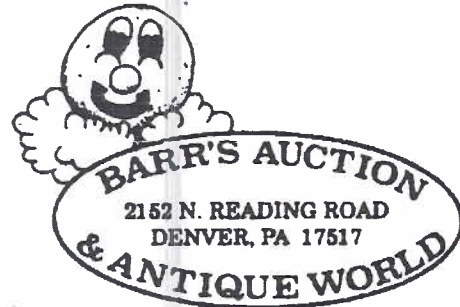
IWO JIMA, February 23,1945

H.S.Crocker,Phila.is one of many printers of chrome PCs showing the U.S. Marine Corps War Memorial-The Iwo Jima Statue at Arlington Ridge Rd.and Lee Hwy.,D.C. Sculptor,Felix de Weldon from a photo by J. Rosenthal.

5 miles long,2½ mi.wide, the island cost over 20,000 Japanese lives. 23,000 Marines were killed or wounded. Why? Taking the air strips put U.S.bombers and fighter escorts within 600 miles of the Japanese mainland.

Do you have the scene (not the statue) on a linen postcard? Let us know.

John Klein Postcards



**Exit 21
Pa. Turnpike**

**Saturday 10-5
Sunday 8-5**
Paid Adv.



EXHIBIT WINNERS



Spring-like weather brought 68 members and guests to our Anniversary Meeting in Jan. Thanks go to Barb and Walt Mowrer for remembering the anniversary cake (and for manning the kitchen).

HEART exhibit boards gave us a preview and reminder that Valentine's Day is coming.

JIM WARD	FIRST	Say It With Silk
WALT MOWRER	SECOND	Little Hearts
BARB MOWRER	THIRD	Have A Heart

Honorable Mentions

EARL CARVER	Heart's Delight
DON DAVIS	Hearty Humor
HAROLD MOYER	Hearts Delight
SANDRA SHAUB	Heart To Heart

and **NORM ZIMMERMAN** (His heart was in the right place - but he left his board at home.It happens to the best of us,Norm!)

February's subject: PENNSYLVANIA

March's subject: HORSELESS CARRIAGES

NO WRITING,NO DRAWING - JUST IDEAS!

All we want from you is an IDEA...one for our NPW (National Postcard Week) postcard and one for our Expo/Show advertising postcard. Contact **Lewis Bechtold** with an Expo theme/idea at 385 Conestoga Dr.,Lanc.,PA, 17602,phone 299-5969. Or **Jim Ward** for the NPW theme/idea at 1795 Kleinfeltersville Rd.,Stevens,PA., 17578,phone 721-9273.

SALLY and SAMMY'S LOVE LETTERS

These must be the blackest postcards ever made. Teddy Ashton (pseudonym for Chas. Allen Clarke of Blackpool, England) was an extraordinary artist. But with these PCs we can only sense his humor not his artistic ability. Numbered 58 and 59 and dated 25/9/08, they were published by E.R. Green & Co., Blackpool. "American" translations follow. Postcards reduced 30%.

SALLY'S LOVE LETTER.

My own dear Sammy,

It's aw very nice but durnt talk so soft. theau makes me all of a flutter. Of course I like thee. I like thee better than a new hat or patent button up boots, which I'm havin some this week end. I think about thee when I'm cleanin th' fire-rons. an usin th' long mop. an I'm very fain we're courtin'. Iot never forget that neet when theau first axed me to have a walk w' thee, an' theau said theau'd kiss me. an' I said theau clarsent do it, an' theau said theau wouldnt be dared — Iot never forget it.

*Thy own little darling x x x x x x x x x x
x x x x Sally x x x x*

SALLY'S LOVE LETTER

It's very nice but don't talk so soft. You make me all a flutter. Of course, I like you. I like you better than a new hat or patent button-up boots, which I'm having some of this week-end. I think about you when I'm cleaning the fire-irons and using the long mop and I'm very glad we're courting. I'll never forget the night when you first asked me to have a walk with you, and you said you'd kiss me and I said you couldn't do it and you said you wouldn't be dared - I'll never forget it. Thy own little darling,

SAMMY'S LOVE LETTER.

Very dear Sally

Just a twothree lines to tell thee that I can't help tellin' thee that I like thee better than wot I've ever seen or tasted. better than prato-pie or lobster or even tripe on a skewer. I could eat thee, eat thee dry beaut oather butter or ale. Theau copt my heart an my lungs an my liver; every bit of me. I think about thee aw day when I'm puttin' bobbins in at th' factory. an' I dream about thee aw neet except when I've th' nightmare. There's nout like thee on earth, an' so I feel in heaven. Write back an' tell me theau likes me.

*Thine for ever an' ever amen. x x x x x x
x x x x Sammy*

SAMMY'S LOVE LETTER

Just two or three lines to tell you that I can't help telling you that I like you better than all I've ever seen or tasted. Better than potato pie or lobster or even tripe on a skewer. I could eat you, eat you dry without butter or ale. You've caught my heart and my lungs and my liver; every bit of me. I think about you all day when I'm puttin' bobbins in the factory and I dream about you all night except when I've had a nightmare. There's none like you on earth, and so I feel in heaven. Write back and tell me you like me.

A YEAR-ROUND VALENTINE

At first glance - even after reading it, you may be inclined to think this is anything but a LOVE LETTER. But Dr. Ch. Kopolov surely got at lot of mileage from it, year-round! Re-read it following the directions at the end. Enlarged 20%.

**A MODEL LOVE LETTER**

To Miss _____

The great love I have hitherto expressed for you is false, and I find my indifference towards you increases daily. The more I see of you, the more you appear in my eyes an object of contempt. I feel myself every way disposed and determined to hate you. Believe me, I never had an intention to offer you my hand. Our last conversation has left a tedious insipidity, which has by no means given the most exalted idea of your character. Your temper would make me extremely unhappy; and if we are united, I shall experience nothing but the hatred of my parents, added to everlasting displeasure in living with you. I have, indeed, a heart to bestow, but I do not desire you to imagine it at your service. I could not give it to any one more inconsistent and capricious than yourself, and less capable to do honor to my choice and my family. Yes, Miss, I hope you will now be persuaded that I speak sincerely, and you will do me a favor to avoid me. I shall excuse you taking the trouble to answer this. Your letters are always full of impertinence, and you have not even a shadow of wit and good sense. Adieu! Adieu! Believe me so averse to you that it is impossible for me even to be your most affectionate friend and humble servant.

The reader, after perusing this ingenious little letter, will please read it again, commencing on the first line, and then the third and fifth, and so continue reading each alternate line to the end.

It

Will

Pay

You

To

See

Us

Dr. CH. KOPOLOV

DENTIST

Has removed from 2009 Fifth Ave., to

46 THIRD STREET 46

Com. Phone 1776-W TROY, N. Y.

It

Will

Please

Us

To

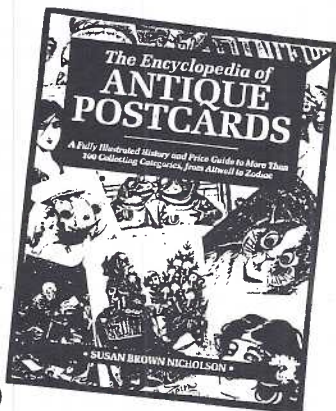
See

You

From Tuck & Son's Valentine Series #112,
"Love Messengers". Under \$4. ↓ ↓



**Susan Brown
Nicholson's
Encyclopedia of
Antique Postcards**
288 pages
1100 illustrations
\$19.95
**THE BEST POSTCARD
REFERENCE BOOK
SINCE DOTTIE RYAN'S
1976 blockbuster!**
(Add \$2 for postage)



**REAL PHOTO POSTCARDS
The Life-Size Edition.**

The Antique Paper Guild's 240 page 8½"x11" ref. book containing 400 pre-1935 FULL SIZE real photo PCs completely described w/ values. Reg.Price \$31.95 + shipping.

Discount Price including shipping \$25.

**Investment Guide to North American
Real Photo Postcards, 2nd edition.**

Over 1,000 pre-1935 real photo PCs completely described and valued from actual auction prices. 246 pg. 8½"x11", incl. early trans., political, commercial, adv., sm. towns, sports, bizarre, etc. Reg. price \$31.95 + shipping.

Discount Price including shipping \$25.

BUY BOTH AND SAVE \$10. Two for \$40 postpaid!



GET ORGANIZED

ULTRA PRO 3-Ring pages for postcards. Contain absolutely NO PVC! 20 for \$3. (15¢ ea.) 1-pocket (holds 8½"x11" sheet) and 2 pockets also in stock. Mix or Match. All are top-load with large pockets. Save postage and pick up and Lancaster or York meetings.



EXHIBITORS - TAKE NOTE

The best friend you ever had - 12" clear plastic rule WITH T-SQUARE. Keeps your PCs neat as you mount them on exhibit boards. In metric and inches. Reg. \$2.25. CLOSE OUT=\$1.50



CLEAR photo/postcard mounting corners. 250 SELF-STICK, ARCHIVAL SAFE! Reg. \$3.95. My regular price is \$3.25

LIMITED OFFER-1 pkg. corners + T-Square = \$4

BURGLAR CHEST

FOR SALE. Underwriter Lab. Inc. rated "C" burglar resistant chest. Inside: 26" high, 16" wide, 18" deep w/2 locking drawers. Outside: 28"h, 18"w, 22"d. 590 lbs. No wheels. Combination lock with relocking device. This is NOT the usual fire safe commonly offered. One owner. Excellent condition. Comparable unit including shipping nearly \$1800. Serious inquiries should contact me.

Jim Ward, Ph. 1-717-721-9273. 1795 Kleinfeltersville Rd., Stevens, PA., 17578-9773.
Paid Adv.

POSTCARD MEDIA ADDRESSES

As requested by several members through the recent Membership Survey, here is data concerning postcard publications. BARR'S POSTCARD NEWS, 70 S. 6th St., Lansing Iowa 52151. A weekly newspaper of 50 to 60 pages with two or three postcard articles, the rest: illus. auctions of postcards, classified ads and show schedules. \$29 per year with increase on March 1, 1995 to \$32.

POSTCARD COLLECTOR, P.O. Box 337, Iola, Wisconsin 54945-0337. A monthly magazine of approximately 78 pgs. often with 3-5 feature articles on PCs along with 8-10 regular columns on PCs. Loaded with display, classified ads this publication has undergone recent change in ownership with noticeable changes in format (leaning towards non-PC subjects). \$23.95 for twelve issues.

MARTHA STONER PUBLISHES LOCAL CARD

Showing well-deserved pride in her heritage, Martha Stoner #85, has published a PC of the farm on which she's lived for fifty years. The full-color 4"x6" card shows The Stoner Farm at 1051 Eden Rd., 17601, Lanc. PA.

Martha's prime motive was to give cards to her children for personal use, but like most orders with large companies (Dynacolor Graphics, Inc., Miami, FL.) the minimum order is 3,000. She has lots to sell (25¢). She'll have them at our meetings or you may write to her. The excellent photography is by Frank Greenstein, Lancaster, PA.

BEGINNER'S BLACKBOARD



PRICING POINTERS

When you buy a postcard the pricing, if done properly, will be in pencil. Erasing it will be easy if the seller has used a soft #1 graphite and placed the price somewhere away from the corners. These little details collectively, are the icing on your cake.

If you're thinking of selling duplicates or unwanted cards, treat your "customers" the same way. Number 2 pencils are the easiest to find, but go the extra mile and find an extra soft #1. And for gosh sakes NEVER USE A PEN or you'll be keeping company with the infamous Jo Newcomer who ruined thousands of PCs with her rubber-stamp!

PLEASE CONSIDER

If you haven't submitted your \$7 for 1995 dues, please send your check now. This could be your last issue of **THE CARD**. Mail to: LCPC c/o Sandra Shaub, 45 Stoneyhill Rd., Quarryville, PA., 17566. \$10/2 same address.

LANCASTER COUNTY POSTCARD CLUB AUCTION #18

Following the business meeting. All items are postcards unless noted. Feb.1995 pg.9
Examine lots carefully. Descriptions are each member's.

INSTRUCTIONS: Bid what you are prepared to pay. Call your membership number (name if a non-member) to the clerk and receive lot. Pay for lots when leaving = cash or local check

- 1 15 Holidays u
- 2 8 Christmas holly u
- 3 8 Ladies u
- 4 10 diff. Piper Aircraft, 5x7" chromes
- 5 8 Older comics u/un
- 6 21 diff. "The Far Side" un
- 7 17 diff. Expo '86, Vancouver un cc
- 8 1990 Postcard Collector calendar set, un
- 9 7 Toronto, Canada by Valentine & Sons, un
- 10 8 diff. West Coast linens, un
- 11 5 Nursery rhymes
- 12 11 Old Comics, 1906-07
- 13 12 Old Comics, some und. backs
- 14 30 Foreign: England, Paris, Italy
- 15 50 Foreign: Spain, Australia, Paris cc
- 16 6 + :NY World's Fair, Buffalo, Niagara
- 17 20 Canada: Quebec, Ontario, Nova Scotia
- 18 7 Souvenir view folders
- 19 8 Calif. incl. Betty Davis, B. Crosby, u/un
- 20 5 Lancaster: YWCA, YMCA u/un
- 21 6 " :manufacturing, plants u/un
- 22 3 " :Water Works Bridge u/un
- 23 8 Lancaster City u/un
- 24 8 Franklin & Marshall u/un
- 25 4 Lancaster by Rotograph u/un
- 26 5 " :Barrose Terrace un
- 27 7 Soudersburg, PA un
- 28 3 Lancaster: Silk Mill un
- 29 7 " :F & M un
- 30 8 " :Peoples, Rocky, Conestoga u/un
- 31 6 " :Witmer's Bridge u/un
- 32 8 " :Churches u/un
- 33 5 " :Cemeteries u/un
- 34 8 " :Plain People un
- 35 4 " :Plain People u/un
- 36 8 " :Downtown u/un
- 37 3 " :Penn Square un

ANONYMOUS DONATIONS #38-40

- 38 50 WW II ships/Atlantic Fleet Sales, un
- 39 Small box of damaged cards
- 40 14 diff. Golden Gate Bridge un
- 41 DONATION by Joan Lehman #68: Al Lang Field St. Petersburg, FL. Baseball training field of the St. Louis Cardinals. Photograph PC by W.M. Cline Co., Chattanooga, TN. Postmarked St. Pete, Dec. 12, 1948. Pencil addressed.
- 42 12 Motel advertisement cards, un
- 43 7 Ave Maria Grotto, Cullman, Alabama, un
- 44 50+ Dublin, Belfast views u/un
- 45 5 Marietta churches un
- 46 Denver, PA: West side of RR Square (damage)
- 47 " :Waterfall (where Norm Z. swam) u
- 48 " :Public School Bldg. u
- 49 " :P & R Depot u
- 50 4 Lancaster: Watt & Shand's (4 diff. publ.)
- 51 4 Families: The Dams, Roots, Hells, Littles
- 52 4 Old goats u/un
- 53 4 Royalty: Eliz. II, Chas., Diane and sons
- 54 10 Exaggerations: fruit, vegies on RR cars
- 55 Set of 7 Sunbonnets (days of week) repros.
- 56 10 Western Heroes & Outlaws (M. Roberts) un
- 57 7 Railroad locomotives (Dexter, Koppel) un
- 58 16 Zany products (1976 bi-centennial ?) un

- 59 9 Eskimos, Inuits and sled dogs cc un
- 60 Rothsville: Heisler's Store un
- 61 Rothsville: Residence of J.F. Ruth u
- 62 Rothsville: High School bldg. un
- 63 2 Mt. Gretna: Post Office & store; Circle Camp Meeting cottages (blue prt.) u/un
- 64 50 Potpourri incl. some locals, mostly un
- 65 Book: 1990 Rothsville History (Exc. PC ref)
- 66 Book: East. Lanc. County = 375 scenes! " " "
- 67 247 Lanc. Moose Home, 7 diff., many dups. un
- 68 282 Acetate sleeves for PCs or FDC's
- 69 117 4-pocket pgs. for PCs (old style) u
- 70 56 Gt. Britain views (great tourist descip)
- 71 56 as above w/more tourist's description
- 72 23 Gt. Britain views, mostly cc, un
- 73 10 The Stoner Farm, Eden Road, color, un
- 74 Killarney Oilette by Tuck/Huckcross Abbey
- 75 Killarney Oilette by Tuck/Ross Castle un
- 76 Salvation Army Doughnut Girl (repro)
- 77 Harrisburg Fire Chief (repro)
- 78 Gingers Rogers (repro from tradecard)
- 79 Children, pooch (repro from album)
- 80 People act like leaves (repro/trade card)
- 81 Free Hug PC
- 82 Trade card to PC (repro)
- 83 Lemonade Kids w/pup
- 84 Home without a mother, trade card
- 85 Dig Krazy Doogie (repro from tape)
- 86 Album: 43 old holidays, some signed art.
- 87 York, PA poster of recent PC
- 88 PC storage box + 3-ring pgs. + 12 med. & small albums all made for 4"x6" cards
- 89 Album: 65 trains, streetcars or related
- 90 Album: 276 lg. mix., some dups, 90% modern
- 91 Album: 101 + 3 fldrs.: Lanc. County, modern
- 92 Album: 3 train-related sets + La. Fair
- 93 4 Lord's Prayer + 3 metal add-ons
- 94 RP: Old Mill at Shocks Mills, Pa. u
- 95 Exaggeration: Lancaster turnips
- 96 Lancaster Adv. PC: Schmitz's mattresses
- 97 4 Quarryville, John Groff, publ., 1 u
- 98 4 Lancaster City: 2 u, 2 rp
- 99 25 Lancaster: Long & Davidson govt. post.
- 100 35 Comics: all eras, mostly linen
- 101 90 Asstd. greetings: all eras, u/un
- 102 Strasburg: E. Main St., F.K. Andrews, publ.
- 103 FULL shoebox: views, greetings u/un
- 104 II Comic/humor
- 105 Lancaster Reformed Seminary, 1909
- 106 US Post Office, Williamsport, PA
- 107 4 Marietta
- 108 10 Churches
- 109 14 "My Old Kentucky Home"
- 110 22 Flowers: Butchart Gardens, Vict., B.C.
- 111 5 b/w Natl. Archives. PCs cc un
- 112 10 Alaska
- 113 17 Foreign

Thank you for your patronage. Besides donated lots, 10% of the gross on other lots goes to LCPC's treasury for educational purposes. If you'd like to sell at the next auction (in 4 months) get a consignment sheet from Auction Chairman Norman Zimmerman. Anyone may buy (if they pay their bill) but you must be an LCPC member to sell. We trust this should answer auction questions raised in our Dec. 1994 Membership Survey.

cc=continental chrome

rp=real photo PC,

u=used, un=unused,



