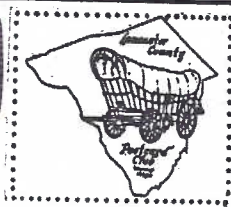


The Card

MONTHLY PUBLICATION OF
LANCASTER COUNTY POSTCARD CLUB
LANCASTER, PENNSYLVANIA

MEETINGS: 3rd MONDAY
FAITH UNITED
CHURCH OF CHRIST
1204 WABANK STREET
LANCASTER, PA

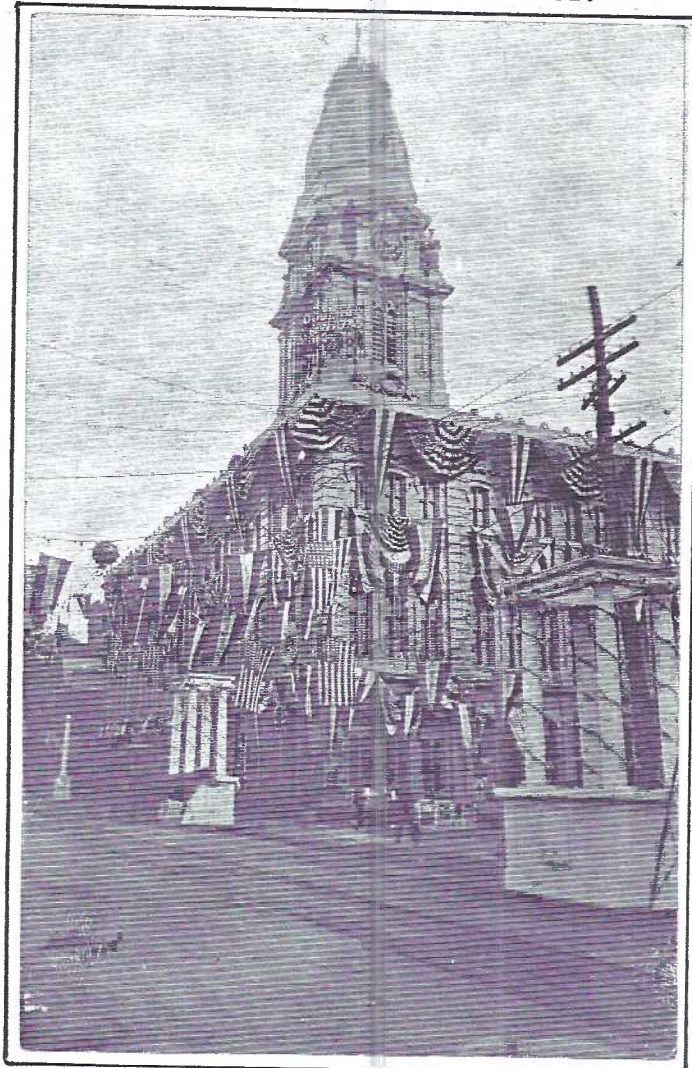
Mar. 1995 - Vol.6 No.3
NEXT MEETING
March 20, 1995 7 pm
Buy/Sell/Trade 5:30 pm



Yearly Membership is \$7 (plus \$3 per person, same address). Ads: \$15 full page., \$8 1/2 page. \$5 1/4pg. PREPAID. Articles and Correspondence: 1795 Kleinfeltersville Rd., Stevens, PA. 17578 Dues payable to: LCPC c/o V. Sandra Shaub, 45 Stoneyhill Rd., Quarryville, PA., 17566.

PROGRAM

Charlie "Bud" Heim will present a postcard show featuring many great real photo PCs such as this one of the Columbia Opera House. A huge sign at the base of the bell tower reads COLUMBIA ONWARD! WHY NOT?



The event? Old Home Week. It was October 12 to 19, 1913*, commemorating the town's 125th birthday.

Hundreds of fine real photo cards were



ORANGES and SNOWBALLS
Ok, Boobie! So you're tired of Winter...the COLD, the ICE, the SNOW! Well, here's a bit of salt for those wounds. Our real photo PC (1918-1930) with studio props, says it all. "You can't come SOUTH to Florida, so I'll just remind you of what you're missing." If you can stand a bit more suffering, turn to more postcards inside this issue.

taken on which we've seen these Columbia labels:

Wm. Bailey, Photographer, 36 N. 3rd St. and Oliver H. Stover, Photos & Post Card Views as well as Joe Baum, Photographer, Middletown Pa. Many cards are also rubberstamped "Collection of J. Jay Wissler". Bud's shows are always informative...see you there!

*A Rose Co. printed PC "Old Home Week" can be found dated 1905, B.D. Beittel, publisher.

SUBSCRIPTIONS STOPPED

If you know "members" who didn't receive this March CARD, remind them they're not members for 1995 and will receive no further issues until their dues are paid.



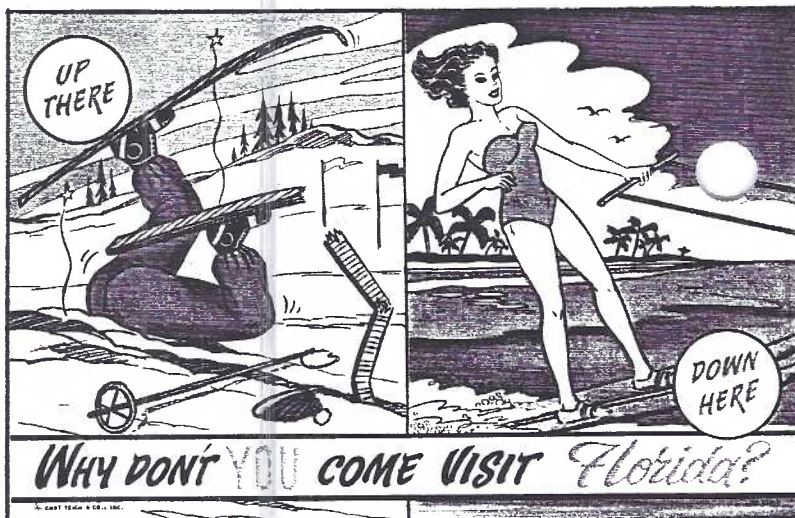
Williamson-Haffner Co., Denver, Colo. (perhaps because of its proximity), chooses California on PC #6417 instead of Florida for seasonal comparisons.

THE CARD
STAFF: Dot Fry, Gerald Hostetter, Jim Rodisill, Jean Frank. EDITOR: Jim Ward. CIRCULATION: Harold Fry. ADDRESS CHANGE: Gwyn Fulmer. ARTICLES, SUGGESTIONS, CORRESPONDENCE TO: 1795 Kleinfeltersville Rd., Stevens, PA, 17578-9773

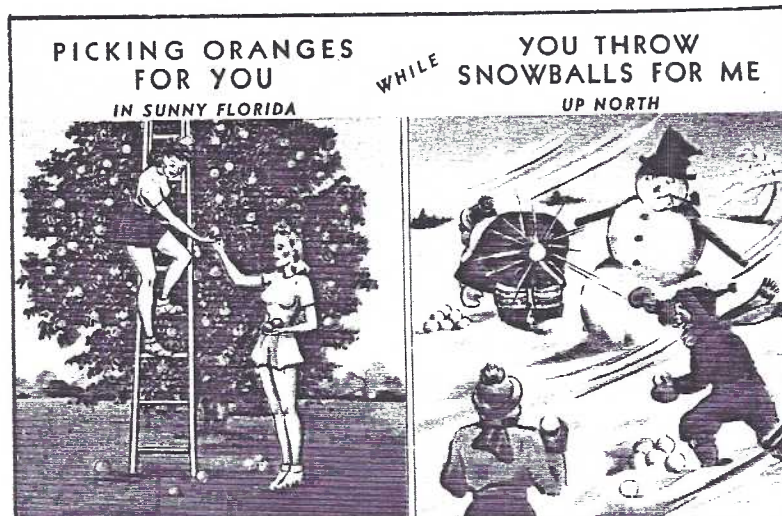
FOUR DEVILISH LINENS FROM CURT TEICH



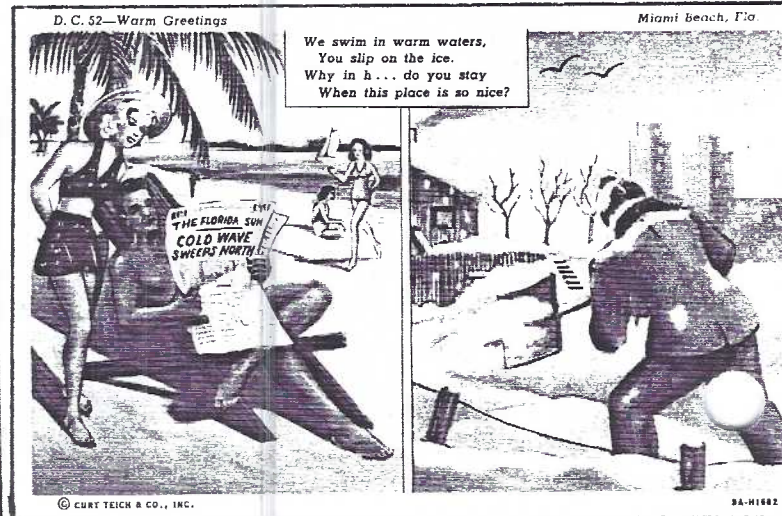
Tropical Fla. Series 12. F-Autos tell it all.



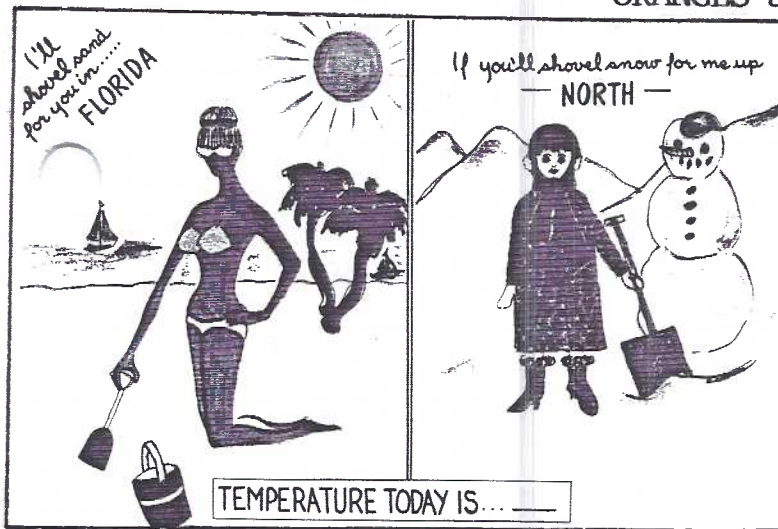
Tropical Fla. Series 184. F-Sports this time.



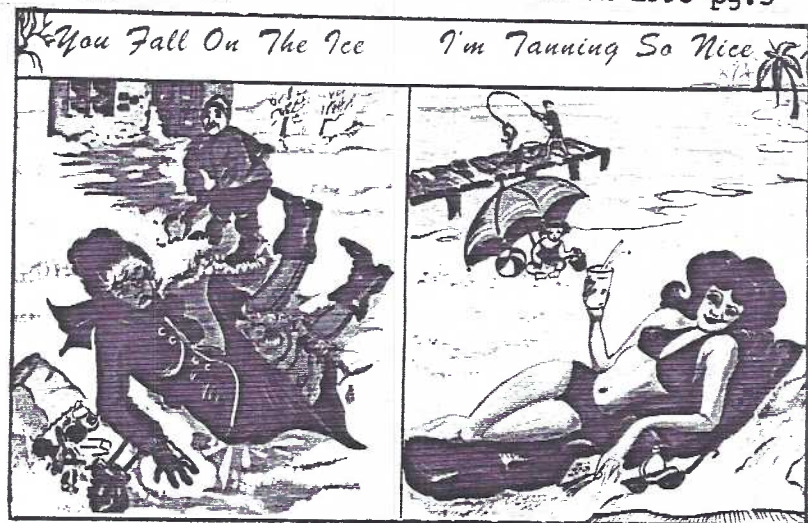
Tropical Fla. Series 267. F-Oranges/Snowballs



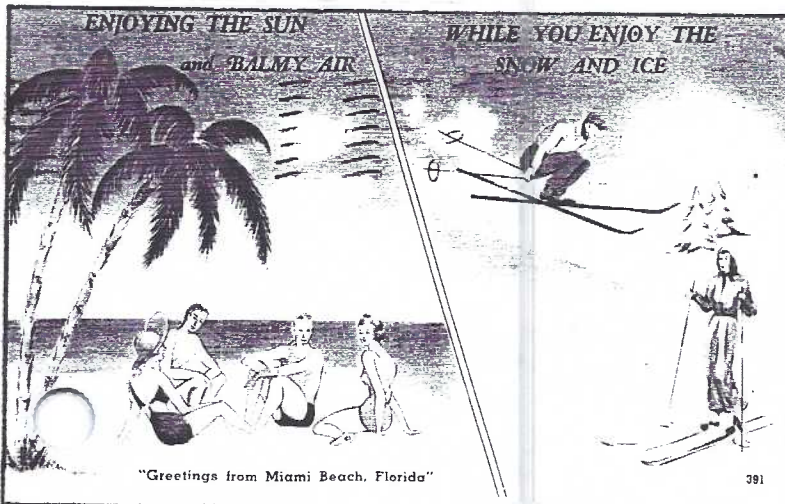
#D.C.52 linen for Dade County (Miami) News.



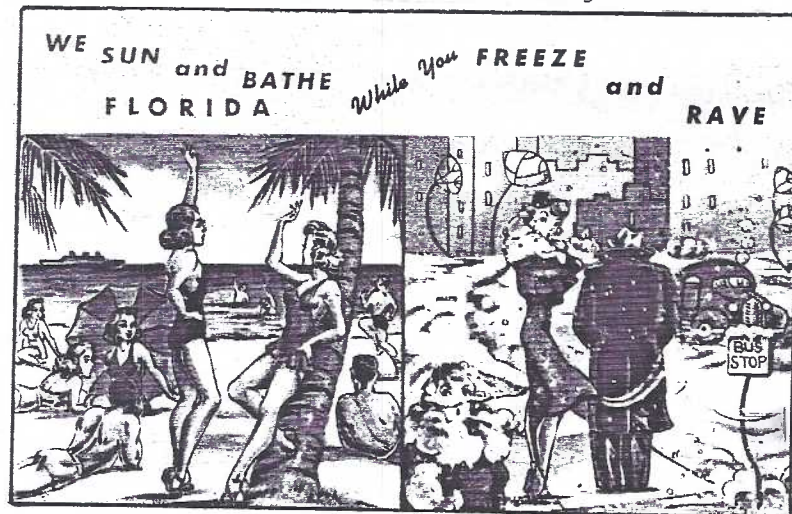
Koppel #FG 129/78227 chrome.



Murphy Bros. chrome. Artist Elva Sieg.



Tichnor linen for Eli Witt Cigar, Miami, Fla.



Curt Teich linen marked "Jumbo Card Co".

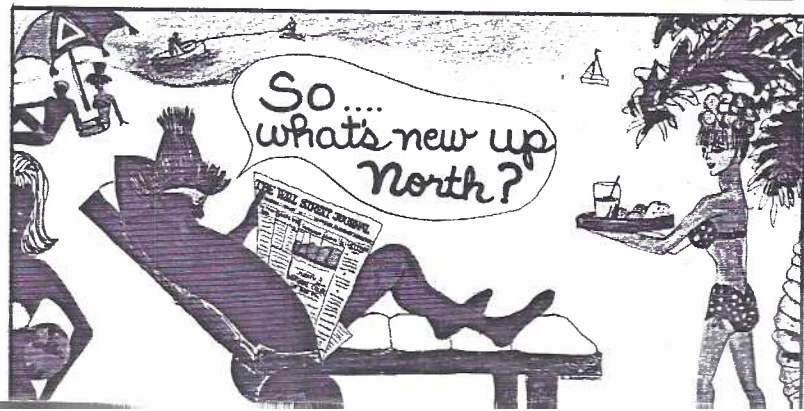


Publ. by Hartman Card Co., Pinellas Park, FL.

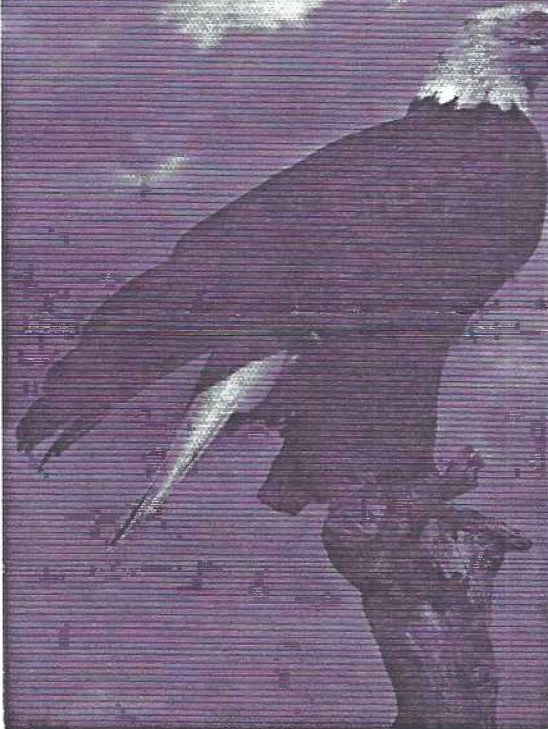


Child and lady (upper right) published by Cardinell-Vincent Co., a California Company. Koppel #FG 134/79096 chrome (right) shown in part. Postcards reduced 25%.

Our buddy, **Al Schoenbucher** #206 in Marietta Georgia, could throw peaches instead of oranges. But you wouldn't, would you, Al? All of us up here in the North can grin at these cards THIS year. They'd have been no laughing matter in the Winter of '93-94!



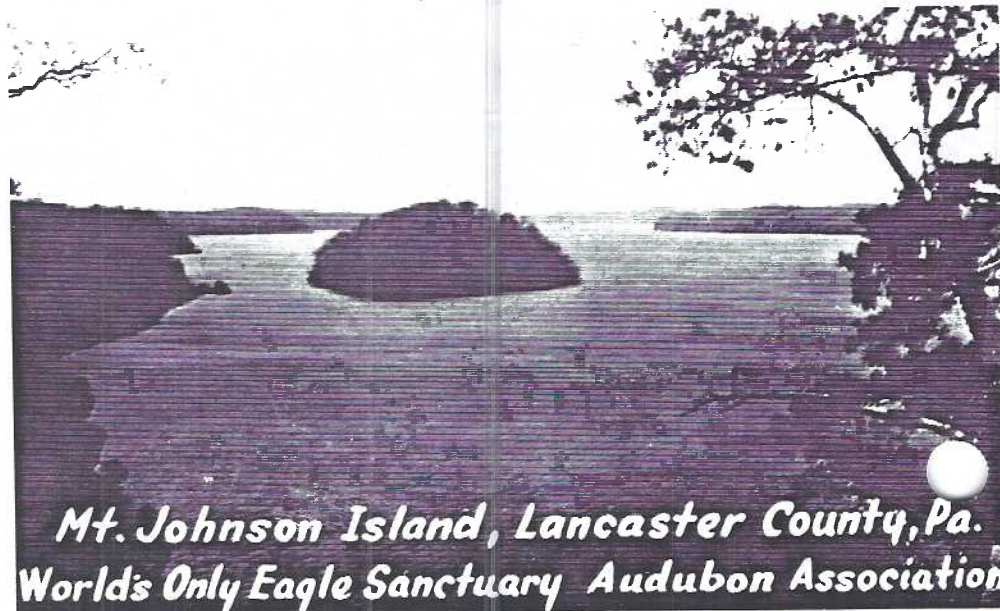
The Only Eagle Sanctuary in the World



Koppel PC Co. Plastichrome
#P7252 - THE BALD EAGLE,
our National Emblem.



This plaque at Drumore, Pa., an upriver boat landing, notes the island's status.



*Mt. Johnson Island, Lancaster County, Pa.
World's Only Eagle Sanctuary Audubon Association*

A photogravure PC of the world's only eagle sanctuary. Photographer and publisher are unknown. →

A 21-acre knoll with 100 foot oaks in a swift flowing river is a survivor. And so are its leading residents. The generations of bald eagles that now populate the Lower Susquehanna Islands have been through the worst of times.

For eons the aerie was part of an island five times as large, but in 1926 the Conowingo Dam was built 8 miles downstream in Maryland. Over-use of pesticides in the post-war years dealt an even stronger blow to the dwindling population of fish-eating raptors.

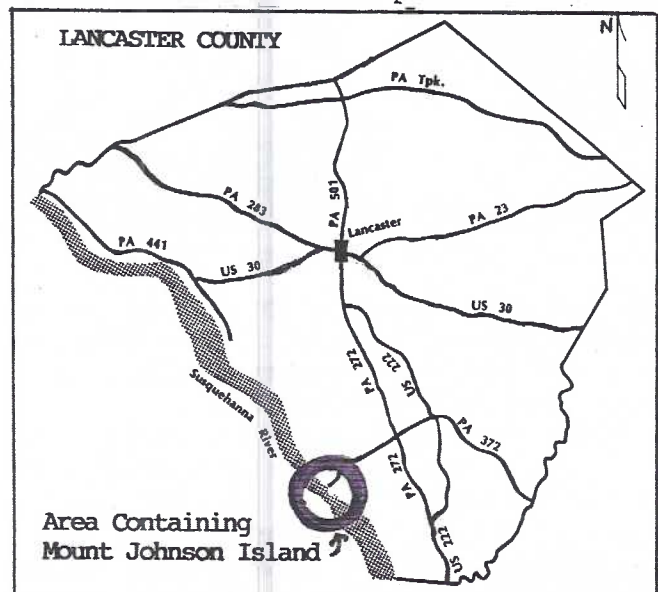
In 1959 Dr. Herbert H. Beck, noted ornithologist, predicted the bald eagle would be extinct by year 2000. He was nearly correct.

Beginning in 1934 a lone nest was watched and a precise census taken yearly of its population. 1937 saw the original nest lost when the dead host tree blew down. Sterile eggs resulted from pesticides in the parents' bodies, so from 1947 to 1956 - nothing.

In 1957 Island Warden Ted Hake, Sr. and Ray Bubb, LCPC member #306 'scoped a nest, now in a strong red oak, and found two adults. Another adult and an immature were near the Safe Harbor Dam - astounding news!

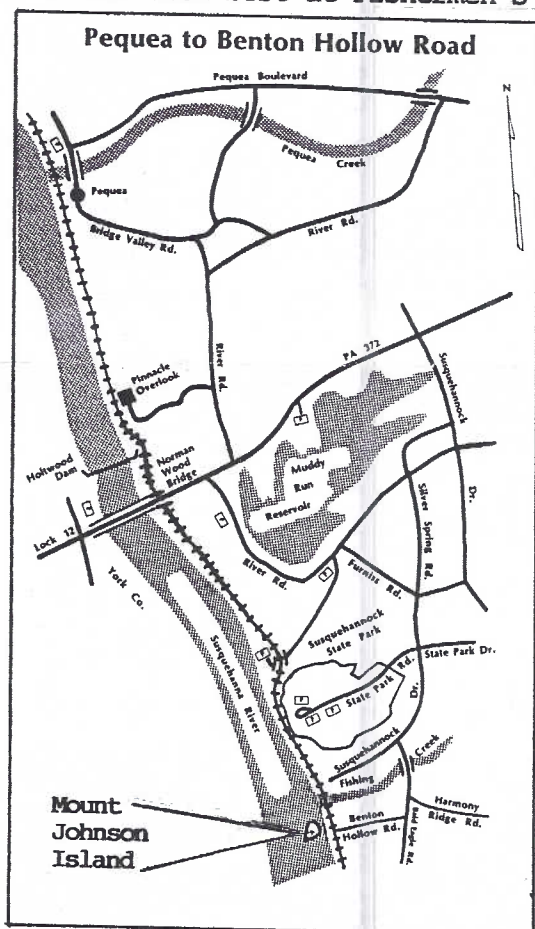
In 1959, Phila. Electric Co., owner of Mt. Johnson Island, waited until late in the year - well beyond nesting time - before it began construction of a power line tower. (The eagles have adopted it as a perch.)

By the 1960's eggs were starting to hatch, a result of bans on harsh pesticides.



Today Ray, his wife Shirley, Jim Rudisill, and other Birders and River Explorers report seeing bald eagles the entire length of Lancaster County's river islands. From Falmouth to Peach Bottom bald eagles soar!

Ray tells of seeing 20 at a time below Conowingo Dam(Md.).Here they savor an abundance of fish during the winter months. You can see them best at Fishermen's Park.



* Map from A Guide to the Birds of Lancaster County, Pennsylvania, published by the Lancaster County Bird Club, 1984. Map by Ray Bubb.

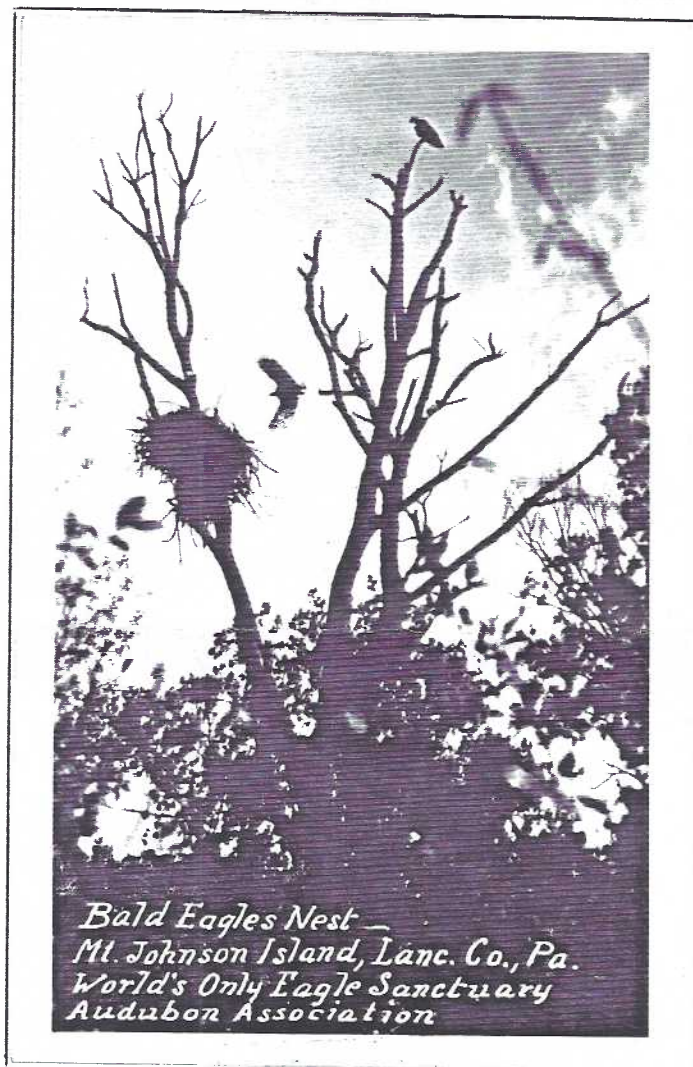
CHECKLIST OF MT. JOHNSON ISLAND POSTCARDS
Printer Samuel Langsdorf & Co. Publ. Unknown.
H #13 307 View of the Susquehanna... (pg.6).

Real photo. Unknown printer or publisher.
H Mount Johnson/Big Island/Peachbottom (pg.6)

Photogravures. Unknown printer or publisher.
ALL HAVE THIS OR SIMILAR CAPTIONS:
Bald Eagles Nest - Mt. Johnson Island, Lanc. Co., Pa. World's Only Eagle Sanctuary, Audubon Association.

DESCRIPTIONS:

- V Eagle approaches nest. Second eagle perched on top of same dead tree (pg.5)
- H Nest close-up with 2 newly-born eaglets.
- H Nest with 2 immature crouching eagles.
- H Nest with three fledglings (pg.6)
- H Island framed by shore(left), trees(right) (pg.4)
- H Island framed by trees on left and right.



*Bald Eagles Nest -
Mt. Johnson Island, Lanc. Co., Pa.
World's Only Eagle Sanctuary
Audubon Association*

This b/w photogravure PC (one of six different views) is by an unknown publisher. A gallant effort, the wording "Audubon Association" belies its having been published by the National Audubon Society.

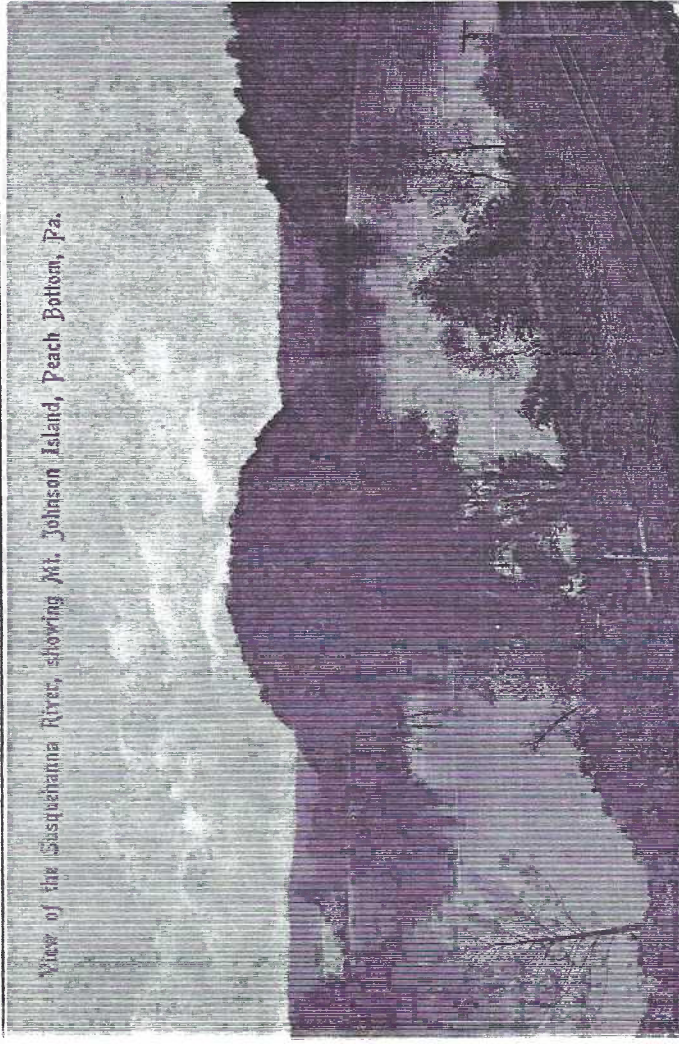
Of 24 cards examined, only three have cancellations: This 1939 with a DOPS stamp box, a 1947 with an EKC stamp box and a 1951 with a Kodak stamp box. All were postmarked from Drumore, Pa., the closest post office. The DOPS card has the only matte finish.

I wish to thank Ray Bubb for contacting the National Audubon Society, Lanc. Co. Historical Society, Muddy Run Nature Center, F & M Archives and over a dozen individuals in an effort to track the source of the photogravure postcards and the eagle/island history. Since the store at Fishing Creek (Drumore Post Office) was a prime seller of the PCs, it is the most likely candidate for publisher. Darmstetter of Lancaster was suggested by several people as possible photographer.

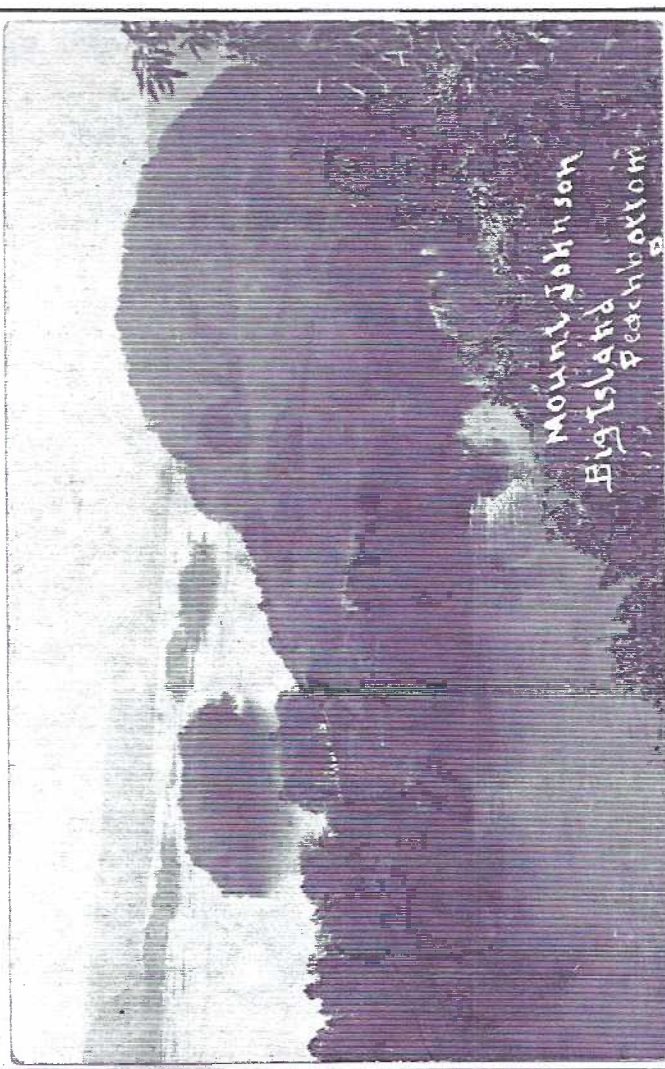
CAN YOU HELP US?

*This excellent guide, compiled by a host of experts, is available at better book stores throughout Lancaster County. \$11.95 2nd ed.

View of the Susquehanna River, showing Mt. Johnson Island, Peach Bottom, Pa.



S.Langsdorf & Co.d/b color PC "View of the Susquehanna River showing Mt.Johnson Island,Peach Bottom,Pa."This is a view before the Conowingo Dam was built(1926-28).



Real photo view postmarked Drumore, Apr.20,1912.Brief message is to jeweler R.H.Boyer,Erie,from H.B.B.Note: much of island (left) now under water from building Conowingo Dam,8 miles south.



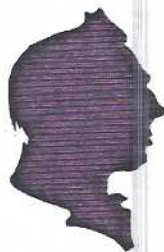
Soon after eagles were spotted on Mt. Johnson Island in 1934 Professor "Herbie" Beck related, "In June,1935,I took Richard Pough with Roger Tory Peterson of the Audubon Society and Arthur Emlen,president of the Delaware Valley Ornithological Club,to the island. One eagle could be seen on the side of the nest. Recognizing the conservation possibilities,Mr.Pough got in touch with the Phila. Electric Company, which had acquired the island in connection with the building of the Conowingo Dam, and by 1936 a lease had been drawn between that corporation and the National Audubon Society making Mt.Johnson a sanctuary."

←B/w photogravure PC with immature eagles on nest.These birds are big enough to fly (fledglings). Adult plumage develops by the end of the 4th year. Two similar cards show young at earlier stages of growth (most likely on the same nest).

HELEN HELINGER,Member #12

Say a prayer for Helen. You can send a postcard to her,too...212 Cedar Dr., Leola, PA.,17540. It will be much appreciated.





Charles W. Griffiths, Jr.
Sept. 13, 1920 - Feb. 16, 1995

There would be no Lancaster County Postcard Club without Charlie Griffiths. Without his initial enthusiasm for the idea and without his continual attention to details our Club might never have succeeded in its formative years.

My weekly sessions with Charlie were a mix of industry and hilarity. He knew more about postcards than anyone I'd met and he was so willing to share - with everyone.

He was my mentor.

He was my best friend.

Jim Ward

It was Charlie's wish that I have his Lancaster Publishers notebooks. These I intend to continue sharing with the Club.

silhouette by J. Rudisill 2/16/90.



LIBRARY



RAILROAD POSTCARDS in the AGE OF STEAM was donated by Bill Seigford to our library. It shows 164 railroad-related PCs. Thanks, Bill!

FUTURE SHOWS



It's SPRINGTIME (well, almost) and that means SHOWTIME...lots of shows close by.

BELMAR, NJ Mar. 4. 13th Shore PC Show. John Taylor Pavilion, Ocean and 5th. 9 to 4.

TOWSON, MD. Mar. 18. MD. Postcard Society. Days Inn, Loch Raven Blvd., Exit 29 from #I 695. 10 to 5. No adm. charge. Free parking.

LANCASTER, PA. Mar. 24-25. Morlatton's 20th Year! Farm & Home Center. 10 to 6 and 10 to 5. \$1.25 with card (enclosed w/this issue).

HAVRE DE GRACE, MD. Apr. 7-8. Martin's Show. Policemen's Community Center. 10 to 6 and 10 to 4. \$2.

BALTIMORE, MD. Apr. 8-9. Greater Balt. Collectors Mart XIX. Pikesville Armory. 10 to 6 and 10 to 4. \$3.

MILWAUKEE, WI. Apr. 28-29. Sixth Annual "National" PC Convention. This is the "biggie". Mecca Convention Center. 10 to 8 and 10 to 6 \$3.50. Free "early bird" adm. for IPA members.

HELP! STRONG BACKS ONLY!

Jere Greider has returned to his key role as Chairman of the NPW Park City Mall display, Sat., May 13. But he must have help early AM at the Mountville Methodist Church to load tables and unload at PC. When the Exhibit is over - same help but in reverse. PLEASE OFFER YOUR ASSISTANCE- EARLY OR LATE SHIFT. Call him at 285-5872 for details.

NEW MEMBERS

#354 **ELIZABETH M. ZOOK** 245 N. Fulton St., Strasburg, PA., 17579. 687-7218. General interest incl. seasonal (holidays), travel and Alberta, Canada, Elizabeth's hometown!

#355 **NEIL FASNACHT** 733 Linden Rd., Hershey, PA., 17033. 533-4048. Hershey, PA. incl. bar-sized Hershey postcards.

#356 **ROBERT M. BOWEN** 1256 St. Joseph St., Lancaster, PA., 17603. 394-0334. PA. counties of Bedford, Blair, Huntingdon and Cambria.

#357 **WAYNE** and #358 **PEARLY ROOT** P.O. Box 1612 Spokane, WA., 99210. Ph 509-327-8037. They both collect Philippines, romance, novelty and humorous PCs. They're dealers, too.

#359 **FREDERICK** and #360 **RUTH YOHE** 243 S. Pleasant Ave., Dallastown, PA., 17313. Ph. 244-5978. They both collect real photo cards, York, Santa, cut silhouettes and more.

WELCOME NEW MEMBERS. Come to our meetings, use our FREE library. join our activities! An accurate membership census will follow.



EXHIBIT WINNERS



74 members and 5 guests enjoyed PENNSYLVANIA postcard boards.

DON DAVIS FIRST Main Streets of Penna.

BERNIE HEISEY SECOND Roadside Penna. Linens

MARY DARRENKAMP THIRD Pa., Keystone State

Honorable Mentions

DREW CURTIS* Let's Hear It for the Amish

POLLY CURTIS Tourist Attractions of Pa.

DOT FRY St. Marys, Pa.

BETTY HEISEY Penna. Maps

BOB KRAMER Pa.'s Anthracite Coal Mining

WALTER MOWRER Pa.'s Covered Bridges

HAROLD MOYER Pa. Places

MARIHA STONER Keystone State

JIM WARD A Great State

*One of our younger members. Originality is a Keystone of our members' boards. Thanks all. March topic: HORSELESS CARRIAGES

April: FORGET-ME-NOTS and OTHER FLOWERS in memory of Charlie Griffiths.

Last month **JESSE Stehman** was incorrectly referred to as Keith. My apology, **JESSE**. I confused your name with Keith Staman. JFW.

AUCTION ACTION



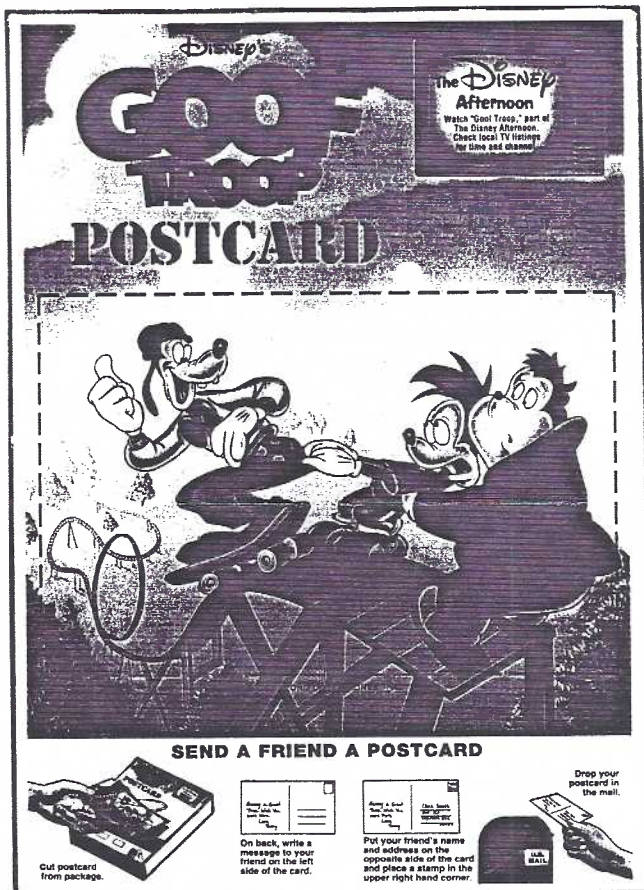
Thanks to a good team: Darvin Rodgers, Barb and Walt Mowrer, Harold Moyer, Bob Kramer, Jere Greider, John Rodkey and of course, Norm Zimmerman who chairs the committee. 113 lots \$499 gross; \$49.90 to Club plus donated lots of \$25. Total = \$74.90 to LCPC.

Lot # followed by price realized.

1 7	20 1	36 4	51 6	67 9	87/88 2	103 8
2 2	21 1	37 1	52 2	68 7	89 25	104 1
3 3	22 3	38 30	53/54	69 11	90 5	105 3
4 5	23 7	39 40	55 4	70 2	91 10	106/107 1
5 2	24 4	40 40	56 5	71 1	92 4	108/109 1
6 5	25 1	41 140	57 3	72 1	93 6	110 1
7 1	26/27 1	42 2	58 1	73 1	94 16	111/112 1
8/9 1	28 3	43 .50	59 1	74/75 2	95 7	113 1
10 1	29 3	44 1	60 17	76/77 2	96 1	
11 1	30 6	45 3	61 5	78/79 1	97 10	
12 5	31 3	46 8	62 6	80 1	98 9	
13 3	32 5	47 8	63 20	81 2	99 2	
14/15 5	33 1	48 2	64 2	82/83 1	100 6	
16/17 1	34 4	49 36	65 7	84/85 1	101 2	
18/19 4	35 4	50 4	66 14	86 47.50	102 2	

KELLOGG'S CEREAL POSTCARD

Harold Galebach #273 showed your editor a surprise POSTCARD (albeit continental size) on the back of Kellogg's Raisin Bran.



Bran. The full-color PC shows Goofy has just hooked a shark "with an attitude". A terrified Mickey Mouse cringes at the opposite end of the dinghy.

It's a scene from GOOF TROOP and you're reminded to "Watch GOOF TROOP, part of The Disney Afternoon".

Oh, yes! You cut out the PC and the plain "inside" is a printed postcard address side.

Report any additional scenes so we can give members an up-dated report.

The "shark" card appears on 20 and 25.5 oz. boxes. Reduced illus. (left) shows PC and directions on another scene (15 oz. boxes).



Jim McMullin #21 answers the question presented in the Dec. CARD "Where were the 'Siamese Twin' beech trees, Elizabeth Farms, Brickerville, PA.?" He was a scout at the first annual winter camp with the late Dr. John W. Price at Spring Lake Park along Rte. #501 north of #322 (Brickerville).

"It was 1942" Jim says. "The trees grew on the west side of #501 midway between Elizabeth Furnace and Spring Lake Park. It was actually a natural graft...caused by the pressure of one limb against the other tree. The trees died in the 1960's or '70's and after several years were removed...as they were very near the road."

Thanks very much, Jim, for the answer.

MORLATTON POST CARD CLUB INC.

Celebrates Year 20
on

Friday, March 24, 1995 - 10 A.M. to 6 P.M.
Saturday, March 25, 1995 - 10 A.M. to 5 P.M.

at

Farm and Home Center
1383 Arcadia Road
Lancaster, PA 17603
(off Manheim Pike Rte. 72)



DISCOUNT CARD ENCLOSED WITH THIS ISSUE

Admission \$1.50
(25¢ off with ad)



For more information call
M. W. Hall, (803) 871-9891
Kay Feight, (717) 263-1638
Anne Darrah, (610) 385-3408