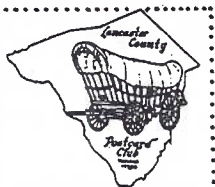


# The Card

MONTHLY PUBLICATION OF  
LANCASTER COUNTY POSTCARD CLUB  
LANCASTER, PENNSYLVANIA

MEETINGS: 3rd MONDAY  
FAITH UNITED  
CHURCH OF CHRIST  
1204 WABANK STREET  
LANCASTER, PA

August 1995 - Vol.6, No.8  
NEXT MEETING  
August 21, 1995 7 pm  
Buy/Sell/Trade 5:30 pm



Yearly Membership is \$7 (plus \$3 per person, same address). Ads: \$15 full page, \$8 1/2 page. \$5 1/4 pg. PREPAID. Articles and Correspondence: 1795 Kleinfeltersville Rd., Stevens, PA. 17578 Dues payable to: LCPC c/o V. Sandra Shaub, 45 Stoneyhill Rd., Quarryville, PA., 17566.



## WILLIAM PENN

Man of Vision • Courage • Action

A Mural Painting by N. C. Wyeth

WILLIAM PENN, founder of Pennsylvania, 1682. The mural painting by N.C. Wyeth shows King Chas. II of England and George Fox with the Quakers for whom Penn founded his Province. Penn's ship, the Welcome, and Old London are represented in the allegorical background. LEFT- Gruss Aus postmarked Feb. 16, 1902 with a beautiful lady, ferns and flowers. Unk. publ

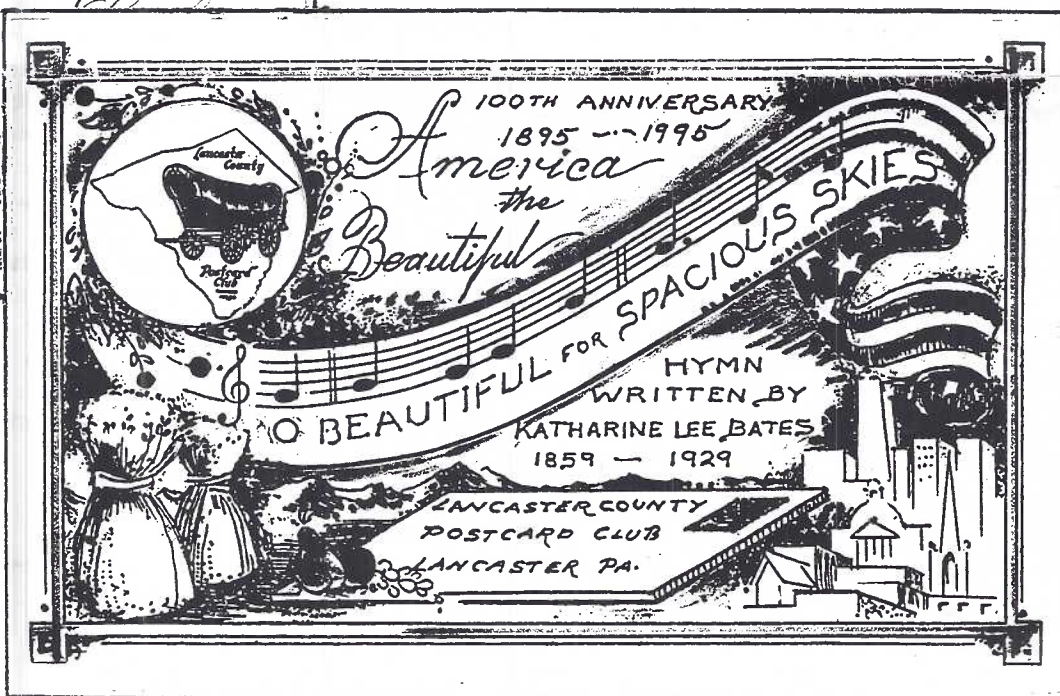


EB&CIR. 9361

Clayton Griffith's Quaker

GRUSS AUS

This FULL-COLOR EXPO FRONT PAGE is available with size 10 SASE and check for \$1.25 to LCPC or pick up unfolded at the August meeting. Limited edition. FULL-COLOR NPW CARD → modified for Expo adv.





# DREAMWOLD FARM

By Gerald Hostetter and Jim Ward

What a great day to usher in Summer! The 90 degree heat wave had broken so Gerald and I headed for DREAMWOLD in a pleasant 75 degrees. I knew I was looking for "an undulating tract of open upland", or so Mr Webster told me. How "dreamy" it would still be made me apprehensive. We had noted the increased sizes of Mt.Joy and Maytown. Had Urban Sprawl killed the Dream?

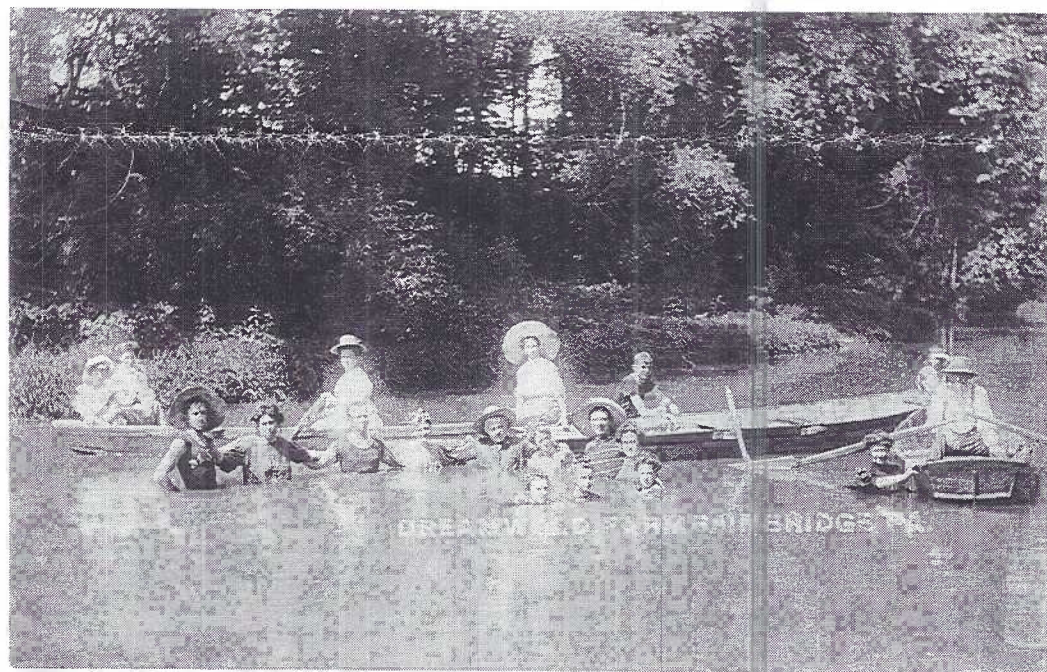
It hadn't!

After a faux pas where the Conoy Creek passes Sagerville(it was a similar house)we rounded a curve and another bridge and saw

it - the pride of Reverend and Mrs. Richard Frank, its present owners. No longer a summer resort, but still a fine farm operated by the Franks' son.

Luck was with us. Rev. Frank proved an enthusiastic host. He pointed to the pasture where the tennis courts had been. It was a fine farm house with only minor alterations from our postcard scenes.

There have been at least four owners since George Cohick (coe'ick) hosted summer guests.George also had a guest house at the shore. Now those of us who have DREAMWOLD



PCs know why we find a guest home on a quiet farm in rural West Donegal Twp.! (See the postcard messages.)

An interesting anecdote told by the Rev. Frank: The township line runs through DREAMWOLD FARM. A tenant farm house, behind the barn but since removed, housed a sizeable family. The parents preferred the children attend the West Donegal schools instead of the Conoy schools (where the little house stood) so the children slept in the DREAMWOLD house to satisfy the school districts' requirements!

DREAM WOLD FARM, Bainbridge, Pa.

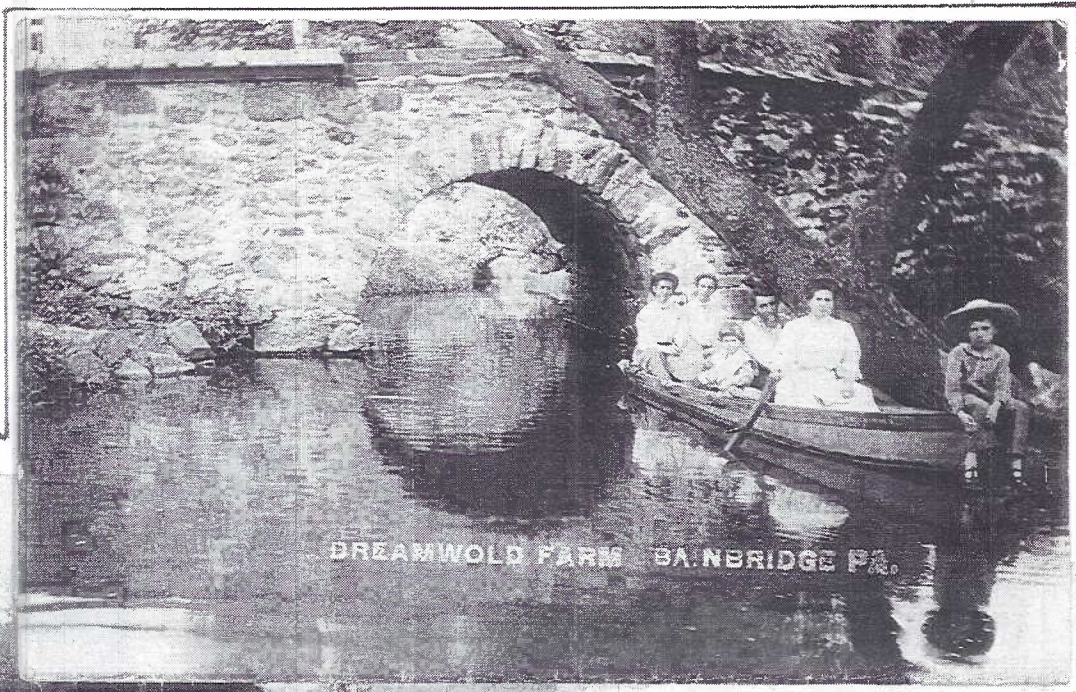
Aug.1,1911 to Bessie Wechter, Cor.Orange & Mary Sts., Lancaster. Dear Wechter, Am still living at this place altho you may wonder what has become of me. We had a strawride last week to E-town and a party on Saturday eve. Can I expect you and a friend later this summer? Hope so. Let me hear from you. With love, sister Myra.

B

THE CARD

STAFF: Dot Fry, Gerald Hostetter, Jim Rudisill,Jean Frank. EDITOR: Jim Ward. CIRCULATION:Harold Fry.ADDRESS CHANGE:Owyn Fulmer. ARTICLES,SUGGESTIONS,CORRESPONDENCE TO:1795 Kleinfeltersville Rd.,Stevens,PA,17578-9773





All of the cards we've seen are posted from Bainbridge. DREAMWOLD FARM was Rte.1, Bainbridge. It's mentioned as being "near Lobata" "up from Sagerville" and "just out from Stacktown". (See accompanying 1994 ADC map.) 8/1/08 to Laura Stagemyer, Hartley St, York. "I am still at Cohick's. I expect to stay until Wed. How do you like your looks?" Miriam 11/5/08 to Cora Shirker, Ephrata. Dear Cousin Do you recognize this place? Wish you were with us this week. We are entertaining the Art Club tonight." Josie (or Janice)

### DREAMWOLD FARM POSTCARDS

All the cards we've seen are Real Photos.

J.K. BAUM, MIDDLETOWN, PA. imprint on reverse  
DREAMWOLD FARM, BAINBRIDGE, PA. upright letters

White barn, small white farm house left  
Farmhouse rt., barn left, people on t. court

- Tennis court w/people, white shed in rear
- c Stone arch bridge/boat, 5 adults, 2 children
- A Two boats, 7 boaters, 12 bathers
- Dam breast, 18 of the 19 bathers above
- Farm house front porch, 8 adults, 2 children
- (above PCs also found w/o Baum imprint)

Unknown publisher, caption in right margin

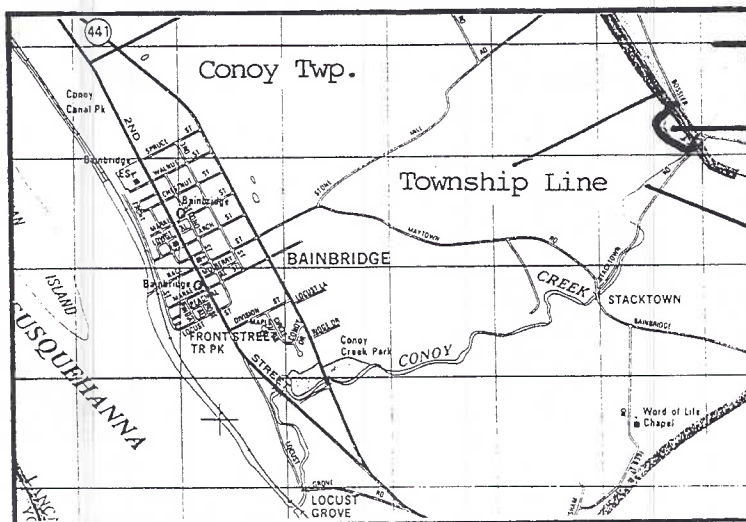
► DREAM WOLD FARM, Bainbridge, Pa.

Approx. 30 people on porch and lawn

DREAMWOLD FARM, BAINBRIDGE, PA letters slope  
21 bathers and boaters, 1 boat (at shore)

This PC is a pirated copy published recently from an old scene. It has a replicated reverse including AZO stamp box and fake album corner shading.

Thanks to Bill Buckwalter and Jose Rodriguez for info.



West Donegal Twp.

The Frank Farm  
(formerly DREAMWOLD)

Conoy Creek



## "MEET ME AT THE EAGLE"

THE EAGLE located in the center of the Grand Court in John Wanamaker's Main Store has been the meeting place of thousands of Philadelphians and their friends from out-of-town. But the eagle, the great organ and perhaps even the block-long store may be-

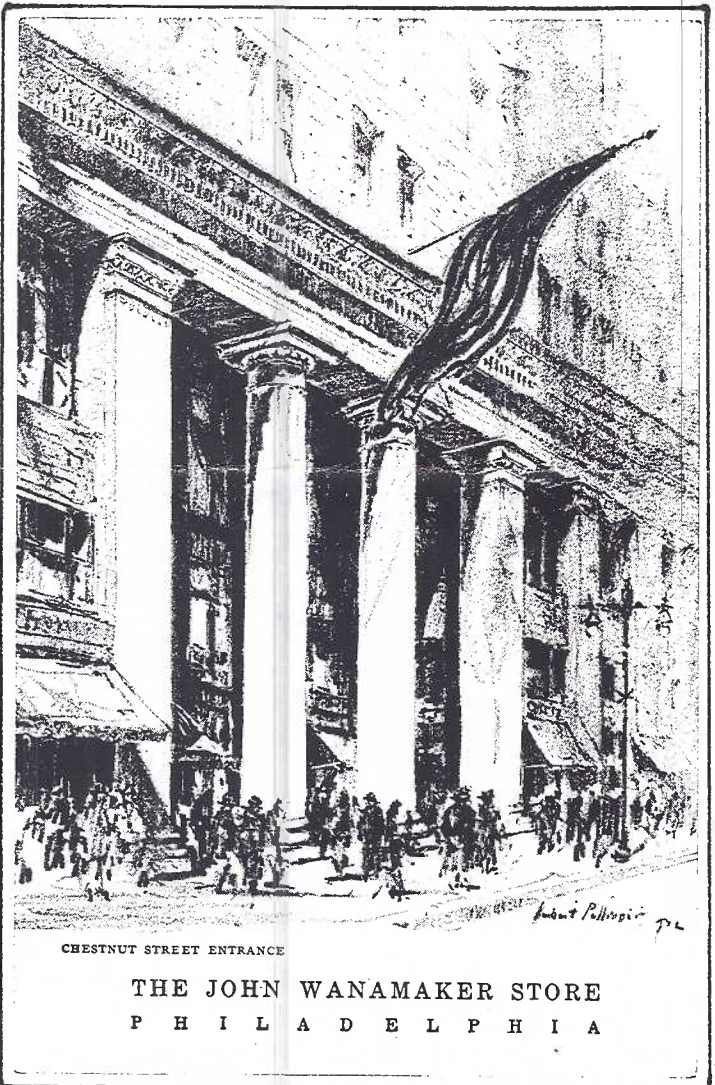
come history. The landmark department store and its branches have been sold.

And so postcards once more become our windows to the past.



THE EAGLE, The Grand Court, John Wanamaker, Philadelphia

This b/w PC published by Colourpicture is #SB2256. The rev. caption describes the eagle "All the parts - the heavy plates, the 5,000 feathers and other surface parts were separately wrought by hand. The magnificent metal art weighs 2500 pounds, its pedestal 4500."



CHESTNUT STREET ENTRANCE

THE JOHN WANAMAKER STORE  
P H I L A D E L P H I A

Wanamaker published many of its own PCs and this sepia div/back shows an artist-signed rendition of the Chestnut Street Entrance and is called a MAILING CARD. It has a 2¢ stamp box (1917-1919 or 1952-1958). Our guess? - the latter era since it includes in the reverse description "home of radio broadcasting Station WOO".

continued next page

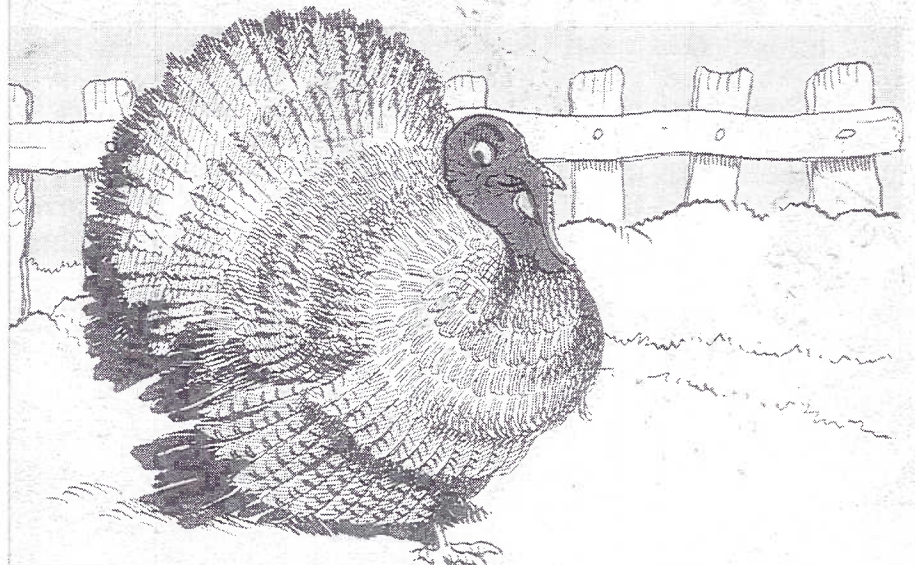
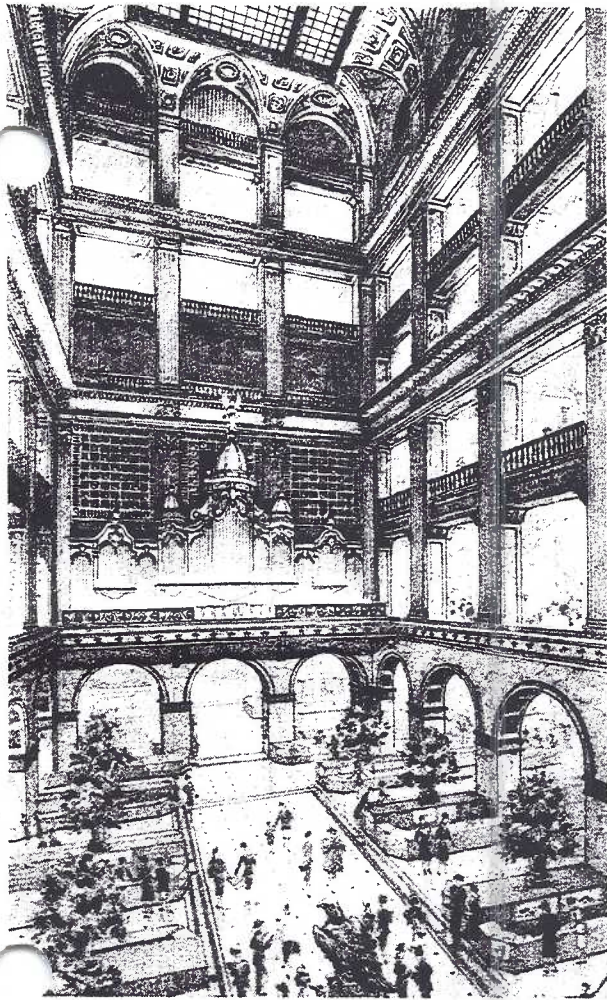
### DEALERS FOR THE AUGUST 19, 1995 EXPO

Agnes Cavalari	New Windsor, NY
John Corliss	Baltimore MD
Lee Cox	Keymar, MD
Roy Cox	Baltimore, MD
Nancy Foutz	High Falls, NY
Leo Frantz	Etters, PA
Marilyn Gottlieb	Rock Hill, NY
Donald Kaye	Stoney Creek, ONT, Canada
John Klein	Adamstown, PA
Ken Kolb	Wilmington, DE
Karl Korzeniewski	Barberton, OH
Mary Kurey	Johnson City, NY
Peter Maronn	Bristol, CT
Gordon McKinzie	York, PA
Jay Miller	Philadelphia, PA

Jim Morrison	Georgetown, MD
Jim Luty	Dillsburg, PA
Jose Rodriguez	Cheshire, CT
Dolores Rowe	Kennett Square, PA
Dede Schaeffer	Lancaster, PA
Fava Sherrard	Rising Sun, MD
Don Skillman	Goshen, OH
Don Wachter	Frederick, MD
Jim Ward	Stevens, PA
William Wolfersberger	Winchester, VA

NOTE TO DEALERS: As members of LCPC you are eligible for the exhibit competition. Write for the number of entry forms you need and return them by July 31, 1995.





This postcard has an unusual back. It reads "Thanksgiving Mailin Card / Wanamaker Originator" which lends credence to our earlier statement that maybe most postcards with no listed publisher were actually published by the Wanamaker corporation. Postmarked Phila PA, Nov.15,1908 it reads

"Good morning, little girls and boys,  
So full of youthful charm;  
I'm Master Gobble, if you please;  
I'm from the Turkey farm.  
I heard the farmer say our farm  
was four and forty acres;  
And I clucked in; "Why, that's almost  
The size of Wanamaker's!"

In actuality, the original Wanamaker Phila. store was over 40 acres. It was 281 ft. high, 12 stories high, 2 stories below street level and occupied the entire city block in the heart of Philadelphia next to City Hall.

Another unknown publisher, very likely Wanawaker, this b/w sketch shows the mammoth 5-story Grand Court. In the center is the bronze eagle and at the far end "the Great Organ that majestically filled the Court with music of the ages". Thousands of Philadelphia visitors came to the store primarily for the attraction which often hosted celebrated organists. The visitors generally stayed to buy.

### CORRECTION - FROM A MEMBER WHO WAS THERE!

Our June story Pennsylvania Dutch Proverbs quoted Yorkcraft co-owner G.Wm.Schaumann for much of the information. However, Mr. Schaumann's memory stands corrected since we've heard from charter member Robert Lieberer #39. Although Bob doesn't get to meetings regularly, he is a faithful reader and he couldn't let the membership be misled.

The first Yorkcraft PCs were printed in Mount Joy, Lancaster County at the Seiler Printing Co. The pressman was Alvin Engle who went on to found his own business (incl. the Merchandiser). Bob even remembers the PCs were first printed on a Webendorfer Press then on a larger single color press and he emphasizes all were short runs. This has since been confirmed by James Phillips who worked in the art department.

Thanks, Bob, for keeping us straight. The Koppel-type POST CARD led us astray.



Yorkcraft miniature note paper



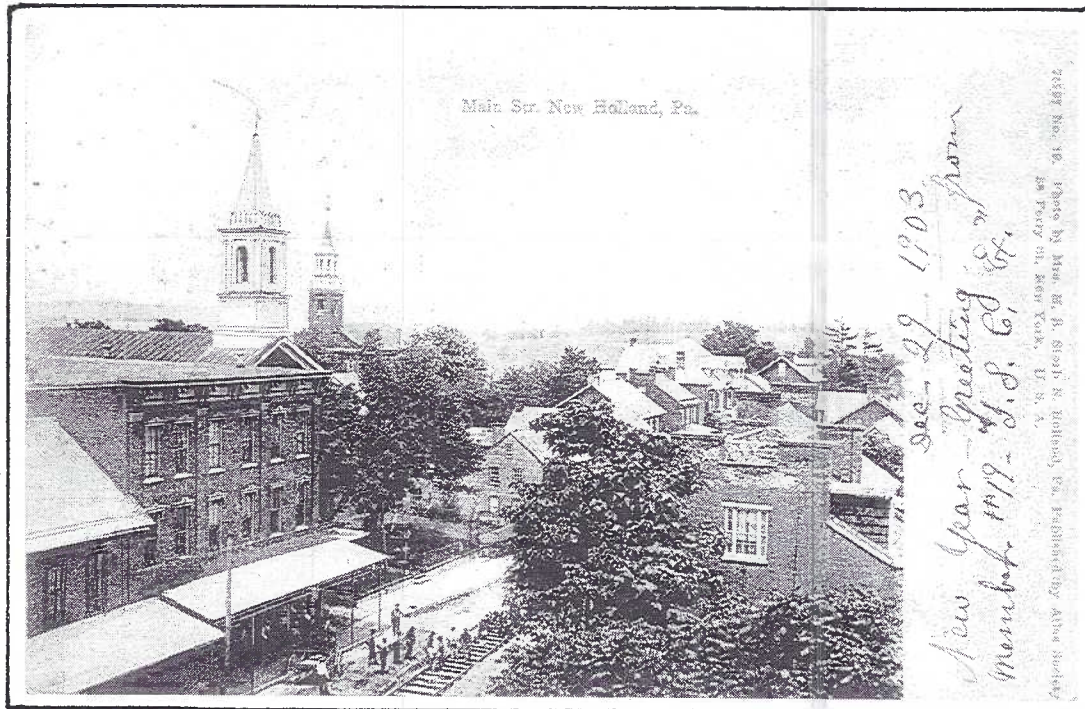
# POSTCARDS OF NEW HOLLAND Centennial Celebration Book of 32

Member #191, R.E. "Scoop" Whitmore, Jr., has just informed your editor (July 4) that he is compiling Volume II **Post Cards of New Holland**. But we're ahead of our story.

Members #322 and 352 Ruth and Brian Frankhouser reminded me that Volume I of **Post Cards of New Holland** was available for \$15 as part of the celebration of the borough's 100th birthday. Published by the N.H. Centennial Committee, it contains 32 very fine b/w

postcard views of the town, only 500 printed.

The booklet's format has four perforated cards per page. The descriptions and stamp boxes are indented from the reverse margins so one can easily chop off the added white margins and still have 3½x5" cards that can be housed in the popular 4-pocket binder pages. Each PC is clearly identified "Published by the New Holland Centennial Committee" which deters fraudulent use.

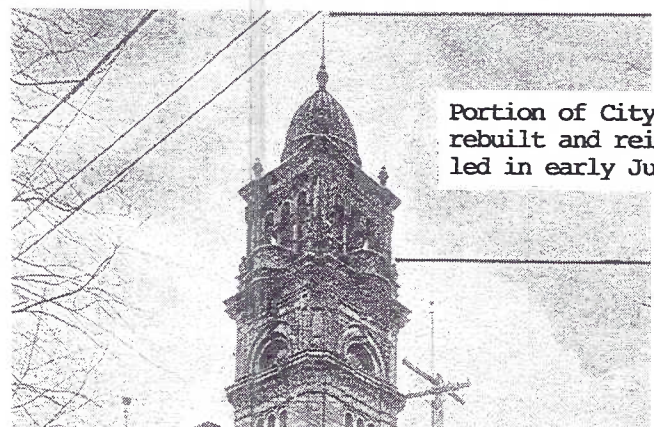


MAIN STR. NEW HOLLAND, PA. This excellent b/w view is from **POST CARDS OF NEW HOLLAND - CENTENNIAL CELEBRATION**. It shows trolley tracks being laid in front of Kauffman's hdwe. store (left). Church steeples of the Lutheran and Reformed congregations can be seen. The card was published by Atlas Society of NY. It is #75997. The photo is by N.H. resident Mrs. M.S. Storb and very likely taken from the roof of the Styer bldg. on the sw corner of Luther (Rail road) Ave. and Main St. New Holland is celebrating the 100th anniversary of its incorporation as a boro. It was founded in 1728. The undivided back card is postmarked New Holland, Dec. 30, 1903.

## FOLLOW UP

We covered the old Lancaster Post Office on PCs in the Aug. 1993 **CARD** when it lost its dome in a lightning storm. This brief follow-up informs you that a copper clad dome with open-air belvedere was installed recently on the building, presently the City Hall.

The cost of nearly \$560,000 was covered by insurance. Coincidentally, **Bill Buckwalter** winner of last month's "error caption" contest with the "Y.M.C.A. Post Office" has a son employed by the local contracting firm which erected the structure.

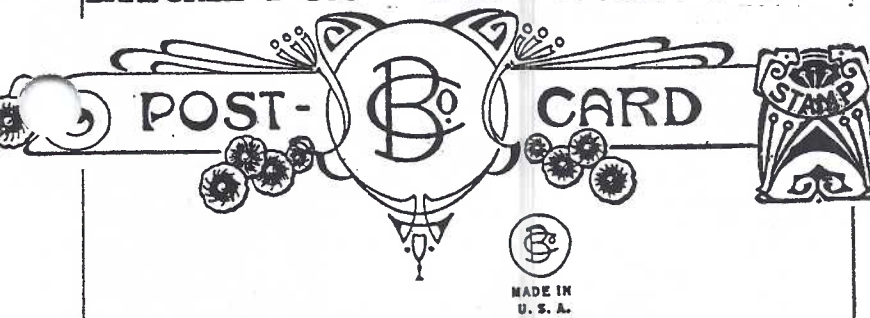


Portion of City Hall rebuilt and reinstalled in early June '95.



**PRINTER POST CARD TYPES**

A continued series.

**BAMFORTH & CO. HOLMFIRTH, ENG. & NY, NY****BAUM, J. K. MIDDLETOWN, PA****POST CARD**

GENUINE PHOTOGRAPH

Manufactured by J. K. BAUM, MIDDLETOWN, PA.

**BEALE'S DES MOINES, IA****POST CARD****BIEN, JULIUS NY, NY****Post CARD****BIRN BROS. LONDON, ENG.****POST CARD****BOSSELMAN, A.C. & CO. NY, NY****Post Card.****POST CARD****BULLETIN, THE MOUNT JOY, PA****POST CARD****CENTENNIAL PUBLISHING CO. MOUNT JOY, PA****Post Card.****CHILTON PRINTING CO. PHILA, PA****Post CARD**

THIS HALF FOR ADDRESS

continued  
next month**John Klein  
Postcards****Exit 21  
Pa. Turnpike****Saturday 10-5  
Sunday 8-5****CIVIL WAR PICTURE POSTAL CARDS**  
Set #2 = 20 in full-color from USPS

Samples from picture postal card set #2

In commemoration of 50 years since the end of the Civil War, the USPS has issued another excellent set of full-color postal cards. Abraham Lincoln, Jefferson Davis, U.S. Grant, Robt. E. Lee, Clara Barton, Mary Chesnut and 14 other meticulously rendered images comprise the set.

And you didn't miss the boat! If you failed to order Set #1 *Legends of the West* (Apr. 1995 CARD) you can still order it with Set #2. Each set contains 20 postal cards. They have been described as "pantographic postal cards" because each has a reduced replica of the picture side printed in the upper right corner of the address side as the postage stamp or indicium. In fact, they can all be mailed but you must add 1¢ to the Westerns, they were printed with 19¢ postage.

Sets are \$7.95 each plus postage. See your post office for order forms.



# THIRD ANNUAL CLUB EXPO - SAT., AUGUST 19

9 am to 6 pm. Committee Help - 7 am to 7 pm.

Even if you didn't sign up to help, come any time and ask where you can help. This year committee help is admitted FREE. Be sure to get your free door prize ticket, too.

**AIR CONDITIONED! - NO STEPS!**



## PROGRAM

WHEW! The 100+ degree heat wave dropped back to the 90's. Rain, thunder and lightning accompanied his meeting but our stalwart president carried on.

Pres. **Bob Kramer** then presented an informative slide talk on govt. postal picture PCs many of which were pantagraphs - exact renditions of the stamp image. We also saw modern examples of MAXIMUM CARDS. Thank you **Bob** - and **Bud Heim** for your help.

**Harry Lines** will show beautiful postcard slides of 10 days in Spain, courtesy of Donecker's Art Works and **Ruth** (who won the trip). The presentation includes a print by **Virgil Scova**, native of Greensburg, PA and a featured artist at Donecker's.

## NEW MEMBERS

**Renewal #312 JOHN VIERRA** 15 Liberty Ave., Gray, ME 04039. Real Photos, Baseball Dealer.  
**#372 RONALD L. DARMSTADT** 31 Erwin St., Painted Post, NY, 14870-9710. Hotels, motels, restaurants and Ellen Clapsaddle cards.

**#373 PHILLIP JACKSON** 3511 W. 78th Ave., Merrillville, IN. 46410-5001. Ph. 219-769-2083. General: Amish; L.V. casinos; hot air balloons; NPW cards; museums, municipal, state, nat'l. parks.

**#374 ANN M. MILLHOUSE** 3531 Horizon Dr., Lancaster, PA 17601. Ph. 285-5725. Russian: royalty, artists (Solomko, etc.) children, holidays, etc.

**#375 TREVOR DIXON** 130 E. Lemon St., Lancaster, PA 17602. Ph. 299-5752. Linens of hotels, bus stations, stores, neon, Las Vegas and Florida.

**#376 FRANCINE ARNOLD** Address, phone same as **Trevor D.** but likes linens of NJ sites, transportation structures, Rome, Italy, PA Turnpike, alligators and cacti.

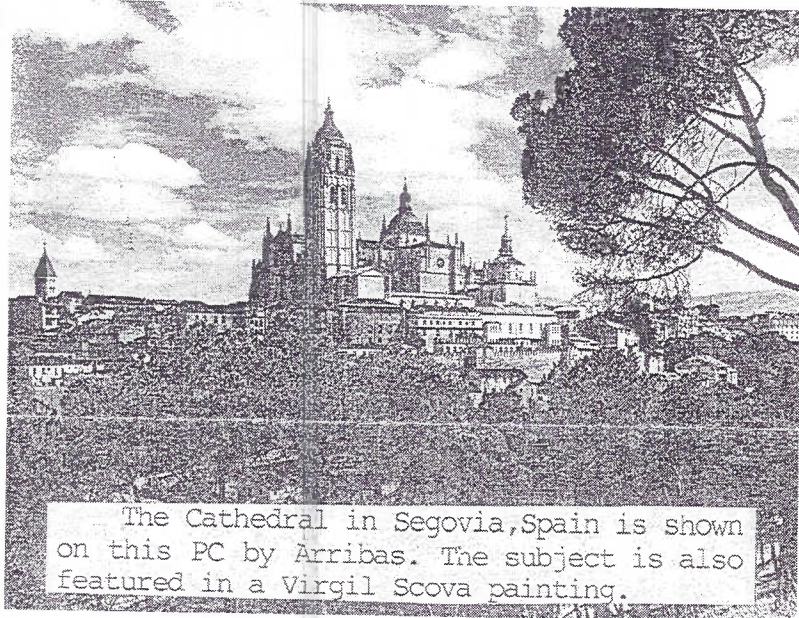
**#377 JAMES KEEBLER** 1746 Bill View Dr., Lancaster, PA 17601. 569-1665. Likes trains, transportation, Halloween, Ancient Mexico 'n Egypt.

**#378 EMILY KEEBLER** Same info as **Jim**. She likes comics, humor and mechanicals. (My kind of girl, **Emily!**) JFW.

WELCOME TO ALL! The above bring LCPC's active/paid membership to 264. (7/31/95).

### SYMPATHY

The Club extends its sympathy to **Betty Beck #115** and **John Klein #247** who lost father and mother respectively in July.



The Cathedral in Segovia, Spain is shown on this PC by Arribas. The subject is also featured in a Virgil Scova painting.



## EXHIBIT WINNERS



57 members and guests (the lowest turnout since 9/93) were on hand. No doubt they looked like they walked right off our exhibit boards by the time they got home. It was a VERY DAMP night and we are grateful for such a loyal following. BATHERS AND SWIMMERS was the subject.

<b>BRIAN FRANKHOUSER</b>	FIRST	Sunbathing
		Celebrities
<b>HAROLD MOYER</b>	SECOND	Beach Girls
<b>JIM WARD</b>	THIRD	Wave Makers

### HONORABLE MENTIONS

<b>POLLY CURTIS</b>	Why Not Myrtle Beach?
<b>NORMAN ZIMMERMAN</b>	Then and Now

Thanks, folks. 'Hope your PCs didn't get much wetter going home.

**August subject** - EMBOSSED POSTCARDS

**September subject** - ANYTHING BEGINNING WITH THE LETTER "S" like soldiers, sailors, starfish, schools, Santas, sausages, etc. (These are for the Sept. 16 picnic/meeting).

Members who sold PCs (and closed up in the rain) in July: **Ruth** and **Harold Moyer**, **Bill Buckwalter**, **Dick Bishop**, **Norm Zimmerman** and **Jim Ward**. Thanks for your troubles.

### AUCTION LOTS

**Norm Zimmerman** will gladly accept lots for the October Auction at the August meeting and the Sept. picnic/meeting. Make our volunteers' jobs easier. Respond early!

HAPPY 50th WEDDING ANNIVERSARY to **Earl** and **Helen Carver** - July 18. HAPPY 77th BIRTHDAY to **Harry Lines** - July 17.