

The Card

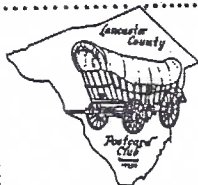
MONTHLY PUBLICATION OF
LANCASTER COUNTY POSTCARD CLUB
LANCASTER, PENNSYLVANIA

MEETINGS: 3rd MONDAY
FAITH UNITED
CHURCH OF CHRIST
1204 WABANK STREET
LANCASTER, PA

Sept. 1995 - Vol.6, No.9

NEXT MEETING/PICNIC
SAT., September 16, 1995
Arrive 2 pm, Buy/sell,
socialize. Dine at 4

Yearly membership is \$8 (\$10 per couple at same address). Ads: \$15 full page, \$8 1/2 page, \$5 1/4 page PREPAID WITH AD COPY. Articles and correspondence: 1795 Kleinfeltersville Rd., Stevens, PA., 17578, ph 717-721-9273. Dues payable to LCPC c/o Sandra Shaub, 45 Stoneyhill Rd., Quarryville, PA., 17566.



PROGRAM

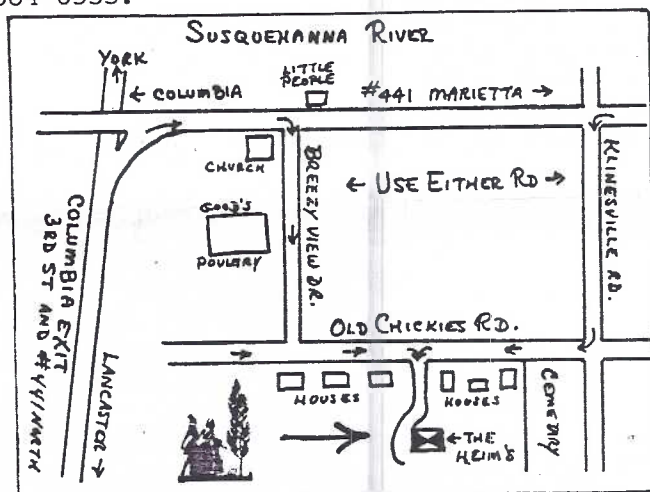
ANNUAL PICNIC/MEETING - SAT., SEPT. 16

Barb and Bud Heim have generously opened their home to LCPC once again. The huge yard with ample parking and a cool breeze from the river make for a comfortable atmosphere.

You may arrive at 2 pm with lawn chair, silverware and a covered dish (hot or cold) and be sure to bring a board (see Exhibit Boards for subject) and/or postcard albums and boxes full to show or sell.

LCPC will provide paper plates, cups and beverages. We begin to fress at 4 pm. ALSO BRING YOUR OCTOBER AUCTION LOTS W/LISTING AND GIVE TO CHRM. **NORMAN ZIMMERMAN.**

If you can't read the map or are indecisive due to the weather, call Heims at 684-6533.



Rte. #30, exit north towards Marietta 1,000 feet; first road east to "T"; n. to drive.

THE CARD

STAFF: Jean Frank, Dot Fry, Gerald Hostetter, Jim Rudisill. **EDITOR:** Jim Ward. **CIRCULATION:** Harold Fry. **ADDRESS CHANGES:** Gwyn Fulmer. **ARTICLES, SUGGESTIONS TO:** 1795 Kleinfeltersville Rd., Stevens, PA., 17578, Ph. 717-721-9273.

Which are the most troublesome, Tommy, worms or sparrows?

Don't know teacher; I've never had sparrows!



EXHIBIT WINNERS



Ninety degrees, high humidity and vacations continue to take their toll on attendance. Just 52 members and guests were present to vote on only four boards in August. And just maybe our regular exhibitors were all boarded-out from the previous week's Expo.

The subject was **Embossed Postcards.**

EARL CARVER FIRST Dressed Easter Expressions

WALTER MOWRER SECOND Santas

JIM WARD THIRD Beauties Abound

HONORABLE MENTION

HAROLD MOYER Having Fun

Thanks, gentlemen, for your efforts. For September it's **ANY POSTCARD SUBJECT BEGINNING WITH THE LETTER "S"** such as sandwiches, schools, the sea, ships, sailors, sheep, shells, sand, silhouettes, spoons, sunbonnets, stores, statues, sunsets, street cars, stamps, Santas, St. Patrick, sleds, skis, sports, scouts, songs, satans, stage and screen stars, space, submarines, silks, squeakers or cities beginning with "S". If you can't find a subject there, what DO you collect?

And heat is no longer an excuse. Get busy! Remember the board is for our picnic meeting on Saturday, September 16.

ANNVILLE'S TORNADO

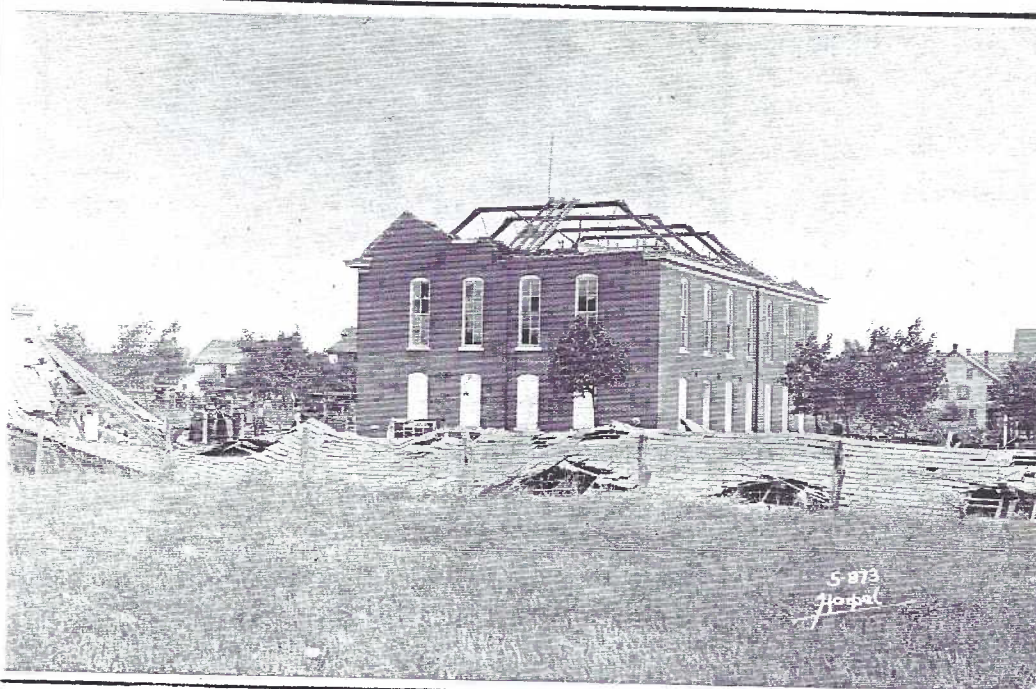
This year Lancaster County has had many storms of all sorts and sizes. We read the stories in the papers or watch them on the evening news. By the next week unless we were fortunate(?) to record them with camera or camcorder we talk about them or save the storm in blurred newsprint.

Postcards and cameras vied for "most popular pasttime" in the teens. And Luther G. Harpel of Lebanon was Kodak Dean of Lebanon County. Harpel's extensive record of the August 21, 1915, tornado surpasses anything we ever had in Lancaster County.

Annville was the storm's victim.



Harpel A70. Shows Lancaster Street south of Main. It suffered considerable damage.

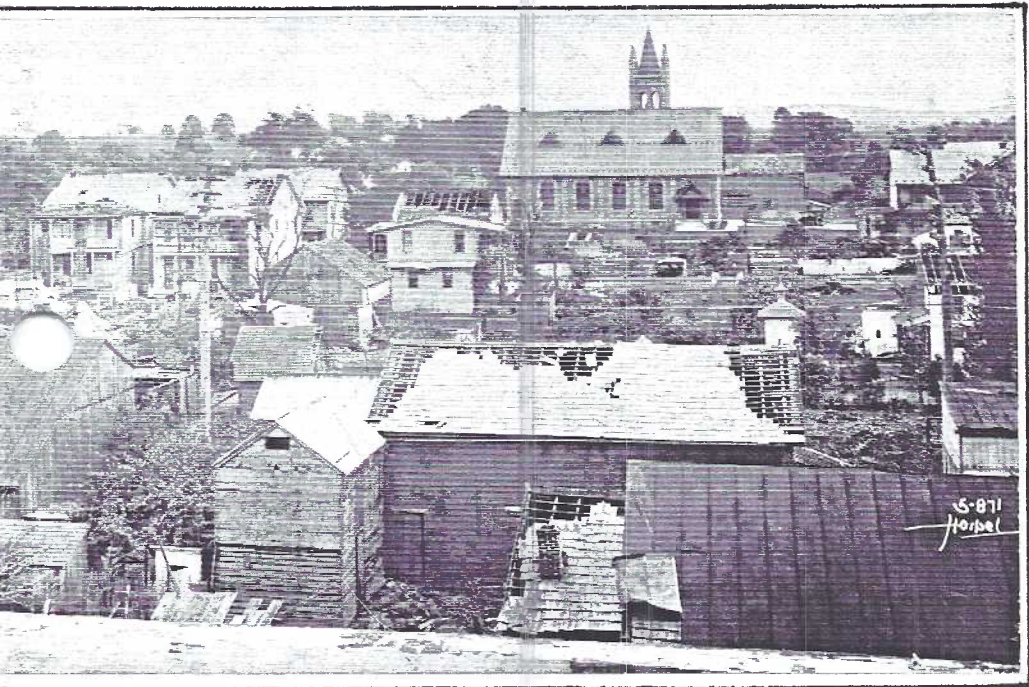


Harpel 5-873. Brick German Baptist Brethren Church lost its roof. It was rebuilt.

Harpel A61. This grand auto was photographed near a cemetery, loss limited to rear wheel.



Harpel A72. Photos such as this are a piece of our social history. Girl in her Sunday best with two ladies, one carrying a baby, view yesterday's damage. The tornado ripped through town on Saturday. Two car loads of neighbors parade by a damaged barn and shed.



Harpel 5-871. Birds-eye views are popular PC scenes. This one is doubly important. It shows wide-spread destruction and also locates the area with an identifiable landmark, St. Paul's Evangelical Lutheran Church in the background.

Harpel A62. Then, as now, photos can be excellent records of destruction for proof to insurance companies. This detailed postcard was likely made for the property owner.



EXPO EXHIBIT COMMITTEE REPORT

Once again we had a fine turn-out with 41* exhibits, 43 boards (two were double entries) by 17 members; slightly down from 1994, but not bad considering a hot humid summer, not conducive to board-making.

Judging was by our member/dealers before the show. We thank them very much for their time and effort.

Agnes Cavalari

John Corliss

John Klein

Jose Rodriguez

John Klein also judged the Open Class section for our younger members.

* four boards arrived late (after judging had begun) and were turned away.

EXHIBIT BOARD RESULTS

The theme **AMERICA THE BEAUTIFUL**, used on our NPW card in May, was continued with our Expo ad postcard and in our exhibits.

Events What we celebrate now or have in the past - commemorations, Old Home Weeks and holidays.

1st Old Home Week, Columbia **Barbara Mowrer**

2nd The Chicken Pull **Ruth Moyer**

3rd Am. Comic Strip, 100th Birthday **Jim Ward**

A Celebration of Liberty **Dolores Rowe**

America Enters the 20th Century **Bob Kramer**

Celebrating 50 Yrs. of Victory **Harry Lines**

Grand Old Flag **Polly Curtis**

Honor the Brave **Harold Moyer**

Old Home Week - Marietta **Walter Mowrer**

Views Local towns, our fifty states, vistas and roadways in America.

1st Columbia's Firehouses **Jim Ward**

2nd Dream Highway **Jere Greider**

3rd An American Travelogue **Bob Kramer**

Chickies Rock Park **Walter Mowrer**

Lancaster County Views **Harold Moyer**

Main Streets U.S.A. **Ruth Moyer**

The Rockies **Polly Curtis**

Wild Cat Falls **Barbara Mowrer**

EVENTS

VIEWS

HOW WE LIVE

PEOPLE

How We Live Americans in love and war, at leisure and at their funniest.

1st Hi Ho! It's Off to Work We Go

Dolores Rowe

Harold Moyer

Jim Ward

Ruth Moyer

Walter Mowrer

Ruth Lines

Queen Mary's Doll House

Sunbonnets' Daily Schedule **Barbara Mowrer**

People All walks of life including children and ethnic groups.

1st Railroad People **Bill Seigford**

2nd People Enjoying Coca Cola **Jere Greider**

3rd Earning Our Wings **Jim Ward**

Beach Girls **Ruth Moyer**

Doggie and Me **Harold Moyer**

Indian Chiefs **Polly Curtis**

People in Diff. Walks of Life **Walt Mowrer**

Poultry Farming **Barbara Mowrer**

Young Members - Open Class Exhibits

1st It All Started With George **Laura Spece**

2nd Elegant Ladies from Spain **Laura Spece**

3rd Furry Friends **Drew Curtis**

Bear Country **Kate Stehman**

Kentucky Horses **Jesse Stehman**

Mountain Mammals **Jesse Stehman**

The Statue of Liberty **Laura Spece**

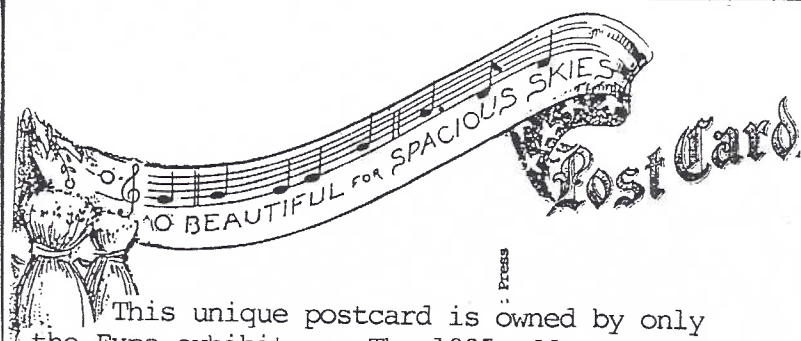
Who's Who **Drew Curtis**

BEST OF SHOW

The four judges revisited the five First Place Boards and determined the BEST OF SHOW. We congratulate **Dolores Rowe** for her exhibit **HI HO! IT'S OFF TO WORK WE GO!**

PEOPLE'S CHOICE AWARD

Ballots were given at the door to each visitor. 114 ballots were used and the result was once more **HI HO! IT'S OFF TO WORK WE GO!** by **Dolores Rowe**. It's seldom the case that the People agree with the Judges but we are all happy this excellent board won the approval of everyone!



This unique postcard is owned by only the Expo exhibitors. The 1995 address side differs from past exhibit PCs by incorporating the theme **AMERICA THE BEAUTIFUL**.

All cards have a golden background. First Place ribbon is blue, Second is red, Third is yellow. Best of Show and Peoples' Choice ribbons are purple.

THANK YOU



It's always a pleasure having **Ruth and Harold Moyer** as working partners on this committee. I would be hard pressed to find two more dedicated, tireless members and am most grateful for their advice, their time and their labor. **Jim Ward**.

POSTCARDS IN THE CARD

Answers to two questions often ask of me:
1) Unless noted, the cards shown are mine.
2) Most of the cards are for sale or trade.

FROM OUR PRESIDENT

Thanks to all those "faithful" who helped out at the Expo.

I realize attendance was down from last year but Jose and the majority of the dealers were still pleased by sales.

There are a lot of challenges facing us if we want to continue to grow and improve so be thinking and planning for next year.

Bob Kramer, President.

EDITORIAL

Attendance at many postcard as well as other hobby shows has been down this year. **Ove Braskerud #200** and I did a survey of the past 12 months. We included postcard, paper and book shows (where postcards are also sold) in a 90 mile radius of Lancaster. There were over 34! In a 120 mile radius there were over 43! It's not difficult to see why attendance would be down. The collector only has so much money to spend on cards in a given period.

And from the dealer's standpoint, can he sell at, for instance, Fort Washington on July 29 and 30, Havre de Grace, Aug. 4 and 5 and then Lancaster on Aug. 19 and expect sales to be good if many of the same collectors attended those same nearby shows?

He'd need a cornucopia of cards! And most dealers will admit replacing stock is the most difficult part of their business.

I don't intend to have an answer but we must use some rationale, not excuses for poor sales. True, LCPC's local publicity was sorely lacking this year and that must be corrected if we expect to compete for good attendance in the future. JFW.

FUTURE SHOWS



Sep. 9 **TOWSON, MD.** Days Inn, 413 E. Lake Ave.
 Sep. 15 **MT. LAUREL, NJ** Laurel Inn, Rte. #73.
 Sep. 15 **Columbus, OH** Aladdin Temple
 Sep. 22-24 **Wind Gap, PA.** Twp. Fire Co. Hall
 Sep. 24 **Montgomery, PA.** Best Western Motel
 Sep. 30 **Westwood, NJ.** Westwood High School
 Sep. 30-Oct. 1 **Atlantic City** Convention Ctr.
 Oct. 1 **Columbus, OH** Veterans Memorial Hall
 Oct. 1 **New York, NY** Park Inn
 Oct. 7 **Allentown, PA.** Ag. Hall, Fairgrounds
 Oct. 7-8 **Akron, OH.** Summit Co. Fairgrounds
 Oct. 14 **Johnstown, PA.** Scalp Level Fire H.
 Oct. 14-15 **Pikesville, MD.** Pikesville Armory
 Oct. 27-18 **Baltimore, MD.** Days Inn, Timonium
 Pity the poor mid-West collectors. They're happy to travel 400 miles or more for good shows once or twice a year.

NEW MEMBERS

Renewal #122 ANNE A. DARRAH 11 Mansion Ct. West. Birdsboro, PA. 19508. Ph. 610-3853408. Collects children, Christmas.

Renewal #271 MOLLY KEEN Box 8196 Lancaster, PA., 17604. Ph. 396-0071. Collects Halloween, Lebanon County and Mount Gretna.

#379 TOM WHITEHURST 715 Dustin Dr., Lancaster, PA. 17601. Ph. 285-7981. Collects ladies, Virginia and Christmas.

#380 JIM TIGNOR, JR. P.O. Box 700, Fairfield, PA., 17320. Ph. 717-642-9637. Likes Maryland.

#381 HAROLD "HI-HO" SILVER 39 Landsend Dr., Gaithersburg, MD. 20878. Ph. 301-977-0630. MD, Wash., DC, Northern Virginia and bowling.

#382 STEVEN COHEN P.O. Box 63 Lumberville, PA., 18933. Ph. 215-297-8260. Bucks County, PA.

#383 WAYNE KNOLL P.O. Box 3587 Balt., MD., 21214. PH. 410-485-6762. Pre-linen PA., Elvis, and mailed cards. IFPD dealer.

#384 MILDRED COX KNOLL Wayne's wife and daughter of members Roy and Helen Cox. She collects same as Wayne and is a dealer, too.

#385 GERALD S. LESTIZ 375 Conestoga Dr., Lancaster, PA. 17602. Ph. 393-7195. Lancaster City and County; Susquehanna River. Many of you may recognize the name. Gerald was a well-read columnist in the New Era (The Scribbler) and is a recognized local historian.

#386 ROBERT E. HOUCK 3001 Lititz Pike, Box 5093 Lancaster, PA., 17606. Warwick Twp., Chester County PA. communities and PCs before 1920.

#387 MAILER HAAG 390 Oaklyne Rd., Lebanon, PA., 17042. Interests not listed. Too bad.

It's great to add so many in one month, half having joined at our August Expo. Our actual membership total is 275!

POSTCARD TO THE EDITOR

Aug. 2, 1995

Dear Jim,

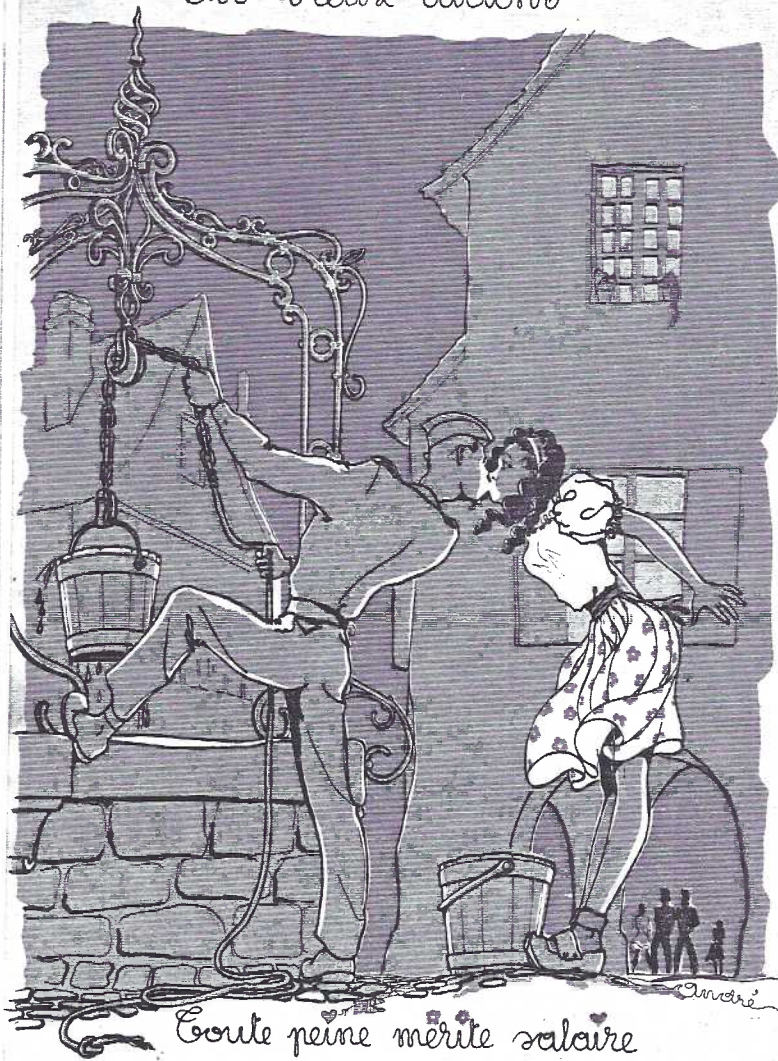
Rather than reducing the number of pages of **THE CARD** or the number of issues, I'd prefer that you raise the dues to \$8 and charge new members for the remaining (Aug.-

Dec.) issues. I do so enjoy your publication so much!

Louise Neilon #324

ED: The dues subject was raised because printing and postage is now \$7.95 for each mailing. Louise is one of our many faithful members from out of town (Glen Mills, PA). Thank you for the compliments, Louise. We voted at the July meeting to do just what you suggested - persons joining in August (at the Expo or meeting) will pay \$3 for the remainder of the year. Dues for one member will be \$8 beginning in 1996 (up from \$7). Two members, same address will continue to pay just \$10 for one year's membership.

Les vieux dictons



Toute peine mérite salaire

All hardship deserves payment.

Les vieux dictons



Qui veut voyager loin ménage sa monture

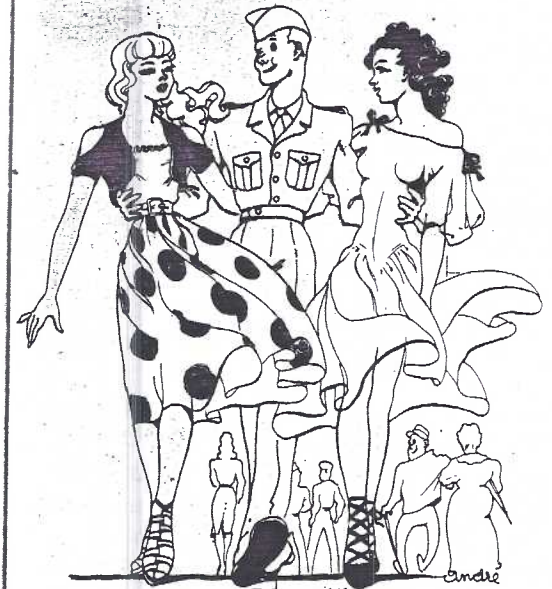
He who wants to travel far must spare his mount.

ADAGES

Les vieux dictons (The old sayings)

World War II was not without its humor and for a postcard sampling we turn to this set (?) of eight over-sized cards (see left example) by Cie des Arts Photomécaniques, Paris and Strasbourg.

Les vieux dictons



La main droite doit ignorer ce que fait la main gauche

The right hand must ignore what the left hand does.

Les vieux dictons



Qui sème le vent recolle la tempête

He who sows the wind will reap the storm.

The signature is **André**. Only Nouhad Saleh lists a "D. Andre" but the signature is very different. Susan Nicholson, Barbara Andrews and J.L.Mashburn mention no Andre. These exhaust my sources. So we will appreciate this unknown **André** for his World War II serviceman humor.

Apologies to the ladies who don't ap-

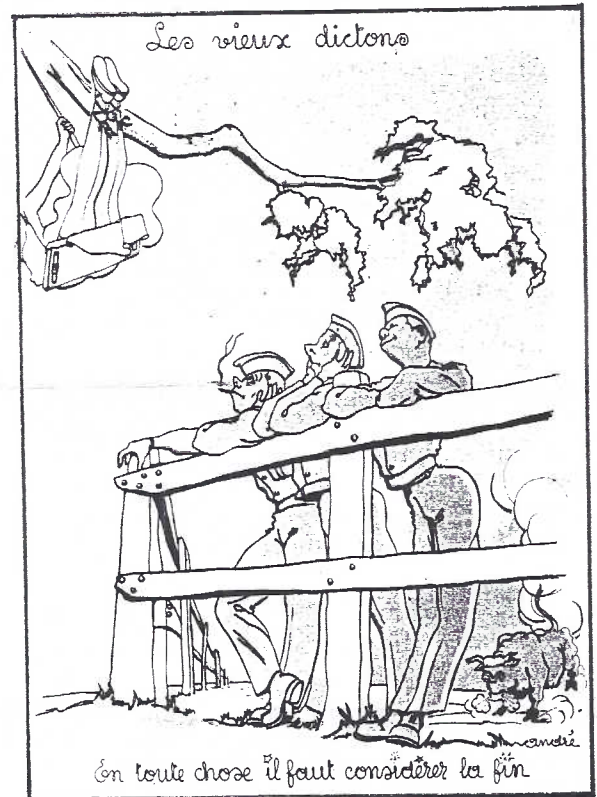
preciate the jokes. The staff is not sexist.

Printed on soft buff stock, the colors of orange, yellow, blue, grey and tan are used sparingly and with a matte finish.

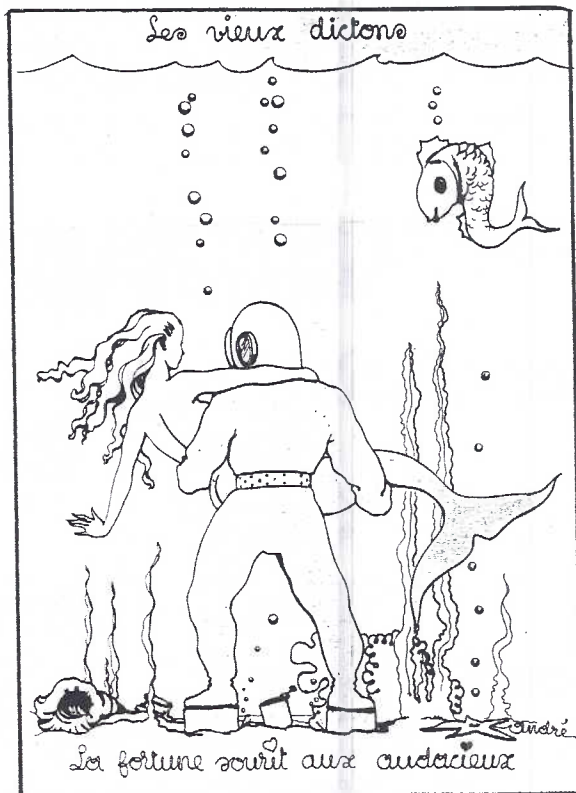
We thank members #100 and #101 for enlisting their French-born friend, Madeleine Reid for the translations.



The end justifies the means.



In all things one must consider the end.



Good fortune smiles to the bold.



Without a little work there is no pleasure.

ECLECTIC

Eclectic - choosing what appears to be the best from diverse sources, systems or styles; one whose opinions and beliefs are drawn from several sources.

From the Illinois Gateway Postcard Club's News: "I was at a local PC show and overheard a couple talking while looking through a dealer's stock. 'Oh yes, this is such a unique card, but it's just not in my subject category'. The collector admired it for a long time and then put it back.

What is this, postcard communism? We shouldn't be so vapor-locked into our subjects that we can't have a **miscellaneous interest category!**"

The author is so right! Many of us begin collecting all sorts of cards and eventually are attracted to a single subject. This kind of concentrating - on more and more about less and less may stimulate the brain for a while, but like most extremes it will soon smother the mind.

Tunnel vision makes driving a car nearly impossible. Tunnel vision collecting stifles the mind. Relax - breathe easy - enjoy life, add a few eclectics to your boxes, maybe even start a new album!

ANOTHER LYME DISEASE VICTIM

Betty Brown #136 of Lititz, PA, informs us she is being treated for Lyme disease. Our fine dealer friend Fava Sherrard #257 suffered from the dreaded tick disease recently. Fava's infection came from mowing grass at her MD. home.

Betty lives near a wooded area where deer have been seen and where she walked her dog (which is being treated, too). We pray Betty has nipped the problem in its earliest stage. We'll miss her at the Club Table where she has helped this past year. You may send a postcard to her at 204 E. Sixth St., Lititz, PA., 17543.

WEDDING BELLS

We're pleased to announce two members recently tied the knot- Betty Mellott #349 and Larry Wood #316. We wish them well.

ONE HUNDRED YEARS TOGETHER

Helen and Earl Carver recently celebrated their 50th anniversary. Ethel and Norman Zimmerman missed our Expo because they were being entertained at their 50th wedding anniversary party. Congratulations to all!

AUCTION ACTION



No program is scheduled for the September picnic/meeting. There will be exhibit board competition as well as buying, selling and enjoying each other's albums.

October is AUCTION MONTH. Please bring your lots to the picnic or get to Norman Zimmerman BEFORE SEPTEMBER 18 DEADLINE, so they can be listed in the October CARD.

PRINTER POST CARD TYPES

A continued series.

COLOURPICTURE PUBLISHERS INC. BOSTON, MA



Place
STAMP
Here

POST CARD *Post Card*



POST CARD

POST CARD

POST CARD

COMMERCIAL COLORTYPE CO. CHICAGO, IL

Post Card

POST  CARD

POST CARD

POST
CARD

CONESTOGA PUBLISHING CO. PRINT

LANCASTER, PA

POST CARD

POST CARD

COPPINGER & GRIEL LANCASTER, PA

POSTAL CARD

POST CARD

Postal Card

Post Card

Post Card

Postal Card

POST CARD

Post Card

COUCH, FRANCIS G. ANDERSON, PA

POST CARD

continued next month