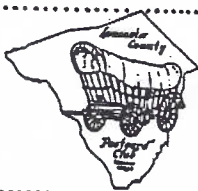


# The Card

MONTHLY PUBLICATION OF  
LANCASTER COUNTY POSTCARD CLUB  
LANCASTER, PENNSYLVANIA

MEETINGS: 3rd MONDAY  
FAITH UNITED  
CHURCH OF CHRIST  
1204 WABANK STREET  
LANCASTER, PA



July 1996 - Vol. 7, No. 7  
NEXT MEETING - Mon., 7 pm  
July 15, 1996  
Buy/Sell/Trade 5:30 pm

Yearly membership is \$8 (\$10 per couple at same address). Ads: \$15 full page, \$8 1/2 page, \$5 1/4 page PREPAID WITH AD COPY. Articles and correspondence: 1795 Kleinfeltersville Rd., Stevens, PA., 17578, ph 717-721-9273. Dues payable to LCPC c/o Sandra Shaub, 45 Stoneyhill Rd., Quarryville, PA., 17566.

## PROGRAM

### OPAQUE PROJECTOR MAKES DEBUT

Like any new gadget, there will be a few wrinkles to iron out before our new opaque projector works perfectly. Although dimly viewed in June, we saw examples of local artists' work on postcards as follows:

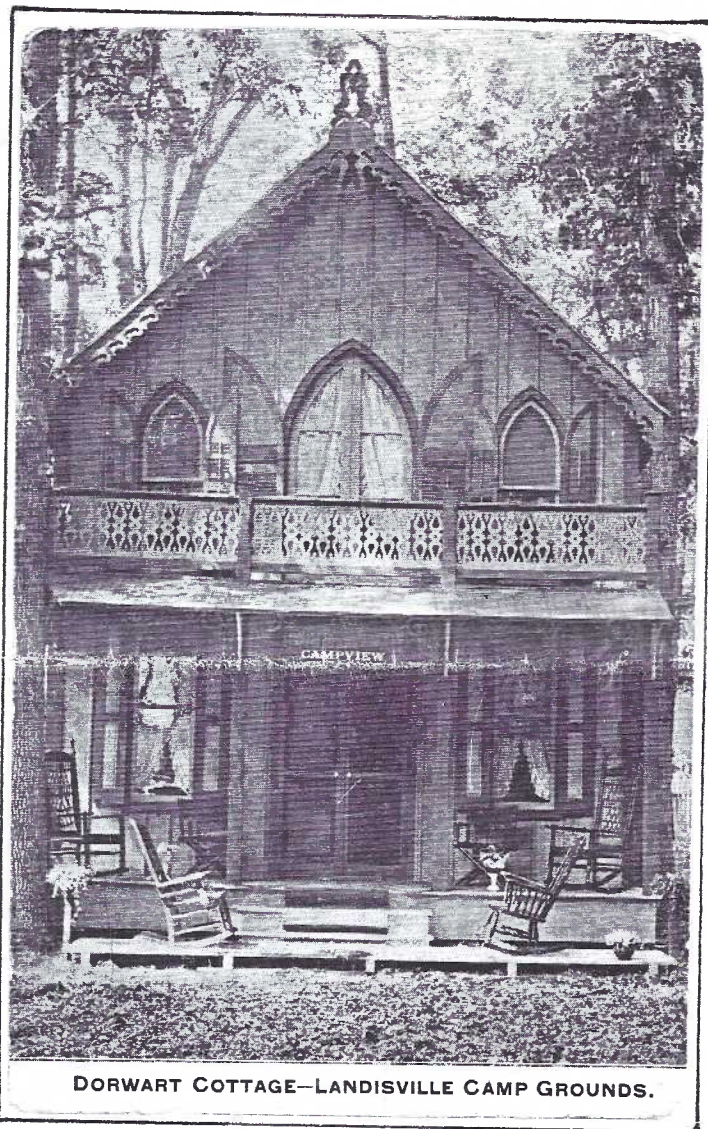
Brian Frankhouser showed the only PC view known by MYRTLE TREMBLAY, "Main Street, New Holland, Pa."

Earl Carver had several Amish courting buggies by H.J. LOEWEN, SR. and JAY McVEY as well as mills and covered bridges by JAY.

Fred Yohe has drawn and published a series of Colonial York PCs. He uses the basic subjects of folk artist Lewis Miller and adds the Yohe touch.

Jim Ward rounded out the presentation by showing Manheim's Zion Ch. by WINIFRED M. RITTER. "The Carolina Paroquet" by LOIS HARTING, "The Cobbler" by CONSTANTINE KERMES, "Rockford" by FLORENCE STARR TAYLOR ending with "Tomatoes, Peppers and Zinnias" by CHARLES DEMUTH.

There are many local artists' works on PCs, some sets. Would anyone like to join me in assembling a check-list? Short hours, some fun. JFW.



DORWART COTTAGE—LANDISVILLE CAMP GROUNDS.

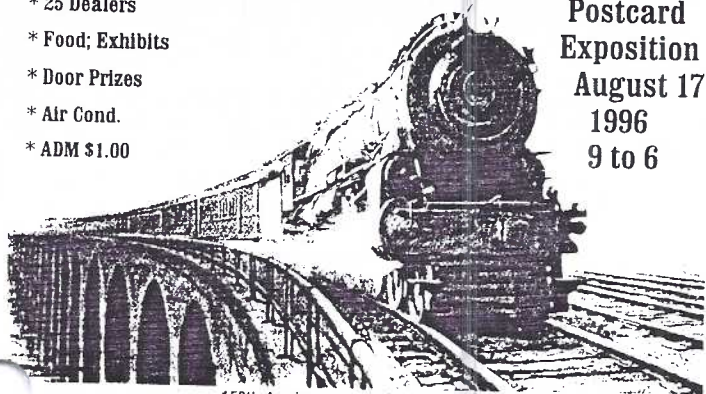
For more than 125 years the Landisville Camp Meeting has served its members' needs. Many of the summer residences including the Dorwart Cottage retain a Victorian charm. Story on pages 6 and 7.

## FREE SUBSCRIPTIONS TO TOP WINNERS Barr's News donates 52 Week Subscriptions

### All Aboard for the Lancaster County 4th Annual

- \* 25 Dealers
- \* Food; Exhibits
- \* Door Prizes
- \* Air Cond.
- \* ADM \$1.00

Postcard  
Exposition  
August 17  
1996  
9 to 6



150th Anniversary of the Pa. Railroad

3,000 of these advertising postcards (here reduced 30%) have been distributed to members and near-by clubs for their next mailings. Expo Chairman Walter Mowrer also announced window placards (same design) are available.

Ruth Moyer is pleased to announce that in addition to the unique LCPC PC awards for Best of Show and People's Choice, Barr's News will also award those winners each a subscription to its weekly postcard newspaper. This follows a phone conversation with the Barr's CEO, Mr. Bill Cote, who also said a shipment of complimentary Barr's News would arrive by show time.

Subscriptions are \$32 a year and LCPC thanks Bill Cote for his generous offer.

A reminder (now that you have this added incentive) these are the categories: HUMOR, HISTORY, HOLIDAYS and TRANSPORTATION, all quite broad, allowing for a variety of cards. Even though this is only our fourth Expo, our club is becoming known for its large exhibit board display which is always popular with the general public as well as our members and dealers.

Submit your entries on the application form in the June CARD. A repro of the form is OK. Or call Ruth or Harold Moyer if you haven't one. Deadline for applications is July 31, 1996.



**NEW ISSUES** of the  
POSTCARD COLLECTOR  
at Lancaster, York  
meetings. JFW.

**GLORIOSKI, WHAT A GREAT POSTCARD!** Newt Groff remembered an article on the Barrose postcards of Lancaster that appeared in the June 1992 issue of **THE CARD**. He thought (KNEW) we'd enjoy this real photo of a B.F. Barr & Co. truck at a nearby RR freight station. My guess is they were shipping out small upright junipers. Emblem on the door reads "Barr's Keystone Nurseries, Lanc., Pa." which was across from Hamilton Watch with addresses at Cottage Pl., West St., 940 Columbia Ave. and 1010 West Lincoln Hwy. over time. They also had floral shops a number of places in town. Which brings up a question Newt raises - what was on Marietta Avenue where Barrcrest Apts. are now? across the brook from the Steinman property? He thought Barrose Terrace was there. I've always been under the impression (from several old-timers) that it was near the old clubhouse of the Media Heights Golf Course south of the City. **HELP!**



### McDonaldland Sticker Postcards

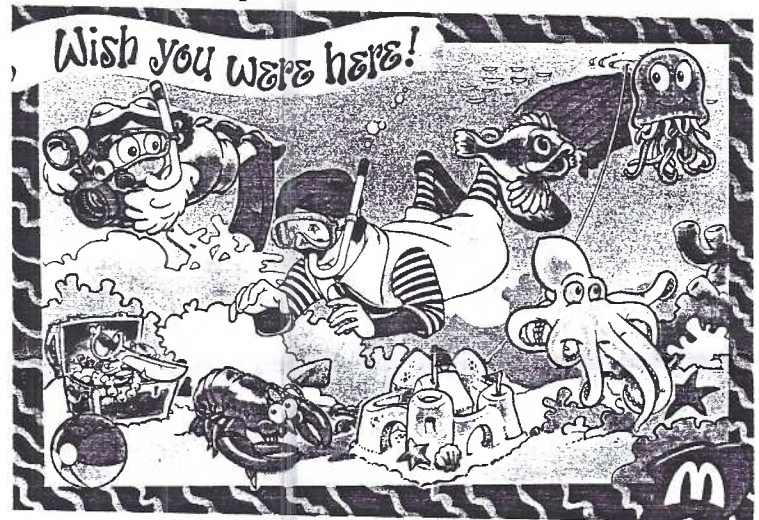
Eagle-eye Ruth Moyer found, on the way home from May's LCPC meeting, that a McDonald's had 2 4"x 5 3/4" PCs, 1995 copyright date, for children of all ages. One shows Ronald M. in a kite-flying scene, the second PC, an underwater scene.

Objects on a perforated second half allow the "child" to use its imagination in finishing the scene with stickers. They're **FREE**. 'Way to go, Mickey Dee!

### HINKLETOWN GIRLS

On the back of a Bamforth lovers postcard Harold Moyer found this:

"Rabbits are nice and so are Squirrels,  
But nothing can beat the Hinkletown Girls!"



Underwater scene with and without stickers.

### FUTURE SHOWS



**JULY 6-13 BRIMFIELD, MA.** 9-7 daily. **FREE** admission. Sponsor is **Member Jose Rodriguez**.

**JULY 14 TOWSON, MD.** Towson Postcard & Paper Show. Days Inn. 10 to 5. **FREE** admission. Sponsor is **Member Dee Delcher**.

**AUG. 2-3 HAVRE DE GRACE, MD.** Community Ctr., from 10-6 and 10-4. \$2. daily, \$3 both days.

**AUG. 17 WOODBRIDGE, NJ.** Central Jersey Delt. Soc., Budget Motor Lodge. 10-4:30. Adm. unknown.

**AUGUST 17 LANCASTER, PA.** Our own Lancaster County Postcard Expo at the Farm and Home Center, 9 to 5 Adm. \$1 (no charge for working committee members). Exhibit boards due between 7 and 8 am.



Two Jimson Weeds with Green Leaves and Blue Sky, 1938.

## Georgia O'Keeffe

"The year I was finishing eighth grade, I asked our washwoman's daughter what she was going to do when she grew up. She said she didn't know. I said very definitely - as if I had thought it all out and my mind was made up - I am going to be an artist."

Georgia O'Keeffe was born November 15, 1887 near Sun Prairie, Wisconsin. She attended local school, then convent school near Madison followed by the Art Institute in Chicago and Art Students League in NYC. Teaching art followed but 1917 proved to be a turning point in her life. She painted in Colorado and first saw New Mexico and although she continued to live on the East Coast she would return to the Southwest.

Exhibiting arranged by Alfred Stieglitz even-

tually led to their marriage in 1924. Her summers were soon spent in New Mexico. The huge country and its stark beauty attracted her. She moved there permanently in 1946 the year her husband died.

Retrospective exhibitions were held in the 1960's and '70's - a tribute by generations that appreciate her landscapes and flowers.

Her work is mostly found on museum cards (without a "postcard" back). But the gorgeous splashes of color confined to a postcard are still worth the search.

She died March 6, 1986 in Santa Fe, New Mexico. She was 98 years old. The following year an exhibit celebrating the centennial of O'Keeffe's birth was held in the National Gallery of Art in Washington, D.C.

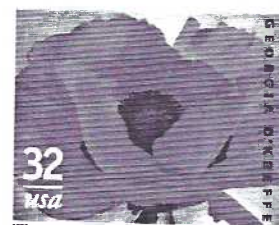
Cup of Silver, 1939.

"A flower is relatively small... in a way, nobody sees a flower - really, it is so small, we haven't time - and to see takes time, like to have a friend takes time.

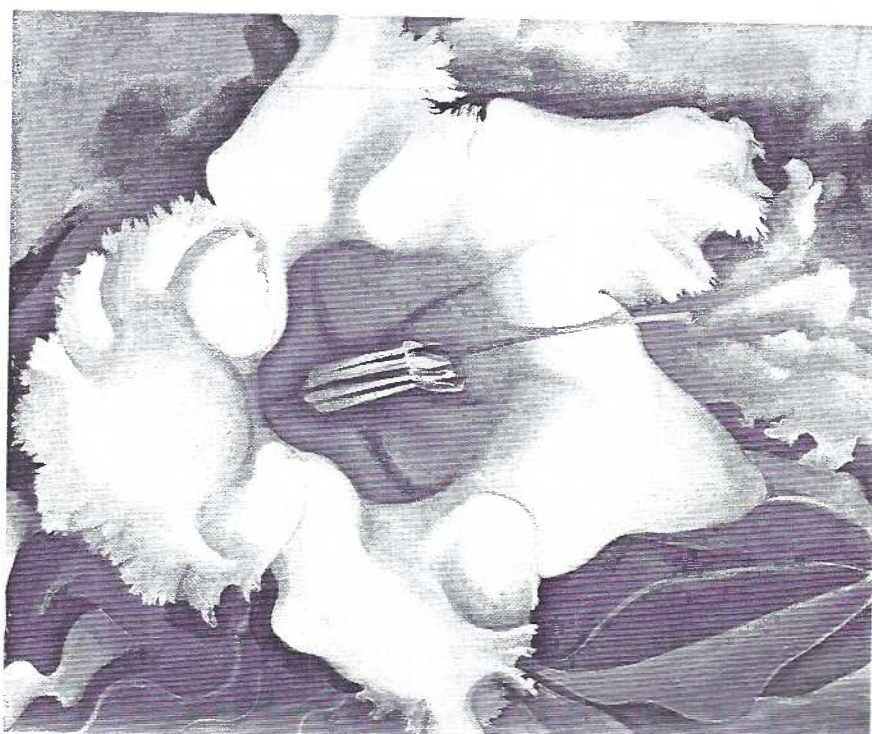
"If I could paint the flower exactly as I see it no one would see what I see because I would paint it small like the flower is small.

"So I said to myself, I'll paint what I see - what the flower is to me but I'll paint it big and they will be surprised into taking time to look at it - I will make even busy New Yorkers take time to see what I see of flowers".

My thanks to Dorathy Fry and Jim Rudisill who contributed the cards and information for this story.

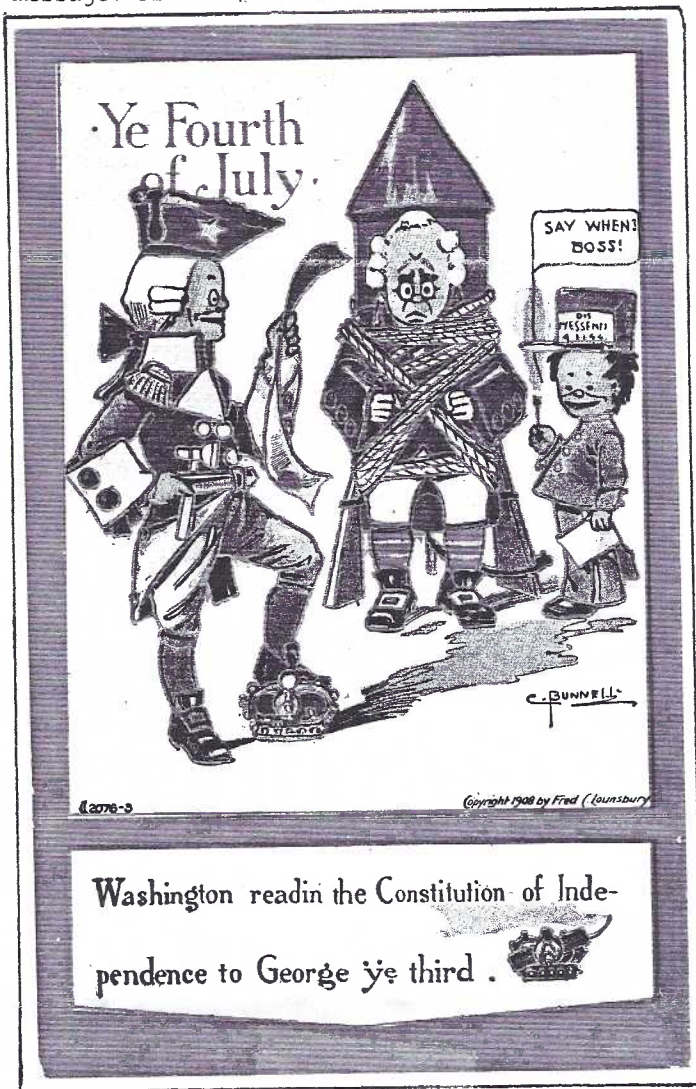


Red Poppy, 1927...available at your local Post Office.



# STEEL POSTCARD FILE FOR SALE

Charter Member #39 Bob Lieberher has been cutting back on his collection/stock and has a very nice, strong steel file cabinet for sale. Dimensions: 21"wide, 4'1"high, 29"deep. It's composed of six drawers each divided forming 2 long rows. Bob had over 13,000 PCs in it. I believe a little ingenuity could create 3 rows per drawer and increase the capacity to over 20,000 postcards and not jeopardize card condition. Phone Bob in Mount Joy, PA. at 653-5373. He is recuperating from surgery and will return your call if you leave a message. Price: \$95.



Washington readin the Constitution of Independence to George ye third.

The artist, Bunnell, shows US history in a comical way on the Fred Lounsbury series 2076 card. Gen. Washington's messenger can barely wait to light the fuse, sending King George on his way.

NOTE: We have omitted Curt Teich of Chicago from this month's POST CARD TYPES in order to present the company's many type fonts in one column. So, C-T in Sept. and wind up the project in Oct.

## THE CARD

STAFF: Dot Fry, Gerald Hostetter, Jean Frank, Jim Rudisill EDITOR: Jim Ward CIRCULATION: Harold Fry ADDRESS CHANGES: Gwyn Fulmer. Articles, suggestions, correspondence to: 1795 Kleinfeltersville Rd., Stevens, PA. 175789773

## PRINTED POST CARD TYPES

### A continued series

appearing in THE CARD beginning June 1995 ...with special attention to types seen on local cards from lists compiled by Charles Griffiths and Gerald Hostetter. Jim Ward, ED. STADLER PHOTOGRAPHING CO., NEW YORK/CHICAGO

A A 12 0 A  
A PLACE A  
= STAMP =  
O HERE O  
A A 2 0 A

POST CARD

STAR, THE WRIGHTSVILLE, PA.

Post Card

THIS SIDE IS EXCLUSIVELY FOR THE ADDRESS

STICK, HARVEY S., DENVER, PA

POST CARD

TALBOTT-ENO, DES MOINES, IA

Post Card

TECRAFT CO., THE TENAFLY, NJ

POST CARD

THOMSEN-ELLIS-HUTTON, BALTIMORE, MD

Post Card

TICHNOR BROS., BOSTON and CAMBRIDGE, MA

128401

POST CARD POST CARD

POST CARD

POST CARD

POST CARD POST CARD

POST CARD POST CARD

POST CARD

TOMLIN ART CO., NORTHPORT, NY

POST CARD Post Card

POST CARD



## BEGINNER'S BLACKBOARD

'Tis the season for selling postcards. A few items might be kept in mind - for not only the beginner, but some seasoned dealers who could benefit from these hints:

- 1) NEVER EVER mark your cards with anything but a pencil; the softer, the better. #1's are softer than #2's and their marks erase more easily.
- 2) Some buyers remove the penciled prices. Prices in the center of the edge erase more easily than those crowded onto a corner.
- 3) Pencil your price (or any notation) as lightly as possible and still be discernible.
- 4) Write clearly to avoid embarrassment.

And remember, WE'RE ALL TEMPORARY OWNERS OF THESE GREAT LITTLE GEMS. Leave them for future collectors in the same condition we've found them.

*Handwritten note: Made by supplement to Hearst's Boston American*

## 4th EXPO DEALER ROSTER REVEALS SEVERAL CHANGES

### MEMBER-DEALERS

(Tentative List)  
 Agnes Cavalari  
 Lee and Shirley Cox  
 Leo and Helma Frantz  
 Marilyn and Howie Gottlieb  
 Jere Greider and Howard Steinberg  
 Paul and Becky Huber  
 Donald Kaye  
 John Klein  
 Ken and Ginnie Kolb  
 Karl Korzeniewski  
 Mary and Bob Kurey  
 Jim Luty  
 Peter Maronn  
 Gordon McKinzie  
 Jay Miller  
 Jim Morrison  
 Jose Rodriguez and Ove Braskerud  
 Dolores and Leon Rowe  
 Dede and Daisy Schaeffer  
 Fave Sherrard  
 Don Skillman  
 Don Wachter  
 William Wolfersberger

Several dealers have paid for extra-wide spaces.

## NEW MEMBERS

- #413 BUD PROWELL 73 Forest Ave., Hershey, PA., 17033-2019. Ph. 533-5598. Collects pre-1950 Hershey, vicinity.  
 #414 KIT PROWELL same as husband, Bud.  
 #415 HARRIS GRAY P.O. Box 246, Brookfield, MA., 01506. Dealer in postcards and supplies.  
 #416 JAYNE GRAY same as husband, Harris.

We welcome our four new members. Bud is still looking for a Hershey linen with the miniature train. He is in the front car. His children would like copies.



## EXHIBIT WINNERS



Call it DISMAL or call it a DISAPPOINTMENT but June saw our lowest attendance, 43, since Oct. 1995. It might have been that old combo = Heat and Humidity, and perhaps vacations, too. The subject is a tough one for PCs. Two "regulars" (they collect everything?) came through.

HAROLD MOYER	FIRST	Wedding Day
JIM WARD	SECOND	I Do

Dot has lightened up on the subjects for the near future, so let's see a good showing for:

July: U.S. HISTORY or BATTLEFIELDS

August: FISH or FISHING

September: MY FAVORITE VACATION SPOT or  
 THE PLACE I'D MOST LIKE TO TAKE A VACATION

### Small and Interesting Addenda

Earl Carver and Lewis Bechtold both submitted cards to May's Interesting Under-sized PC Contest on time but they were over-looked when I assembled the entries. Earl offered a bookmark sized New Burgh card of City Investing Bldg., NYC, mailed at Madison Sq. Sta., 4/5/08. Lewis's 3"x4" PC was an oriental poppy on a Koppel card for Longwood Gardens at Kennett Square, Pa. They both receive an entry prize = set of 6 Barrose PCs.

My apology, Gentlemen...I'm worthless. JFW

### FREE ENCLOSURE

With this issue of THE CARD you should receive a PC from the set of Barrose (Barr Rose) Terrace or the Historic English Dining Room of the old Stevens House. Both are Lancaster, PA. issues. Compliments of your ED.

## MARION'S POSTCARDS

Antique Center of Morgantown  
 Rts. 176 & 23  
 Morgantown, PA

NOTE  
 NEW  
 ADDRESS

Phone 610-286-7924

10-5 Daily: CLOSED Tuesday

I BUY, TRADE & SELL

## LANDISVILLE CAMP MEETING - SINCE 1870

Much of this information is gleaned from a 100-page text published in 1995 by the Landisville Camp Meeting Association. Copies are available at the Meeting Office, 210 Church St., Landisville, PA for \$15. Please write for shipping charges.

The Methodist Episcopal Church of Lancaster was the genesis of the Camp Meeting held in Manheim in 1867. Locations in four counties were investigated. Landisville was chosen for three

reasons: the shade provided by a 24-acre grove of tall oaks, chestnut and hickory trees, the abundance of clean well water and probably most important (remember, this was still 1869) availability of a transportation network.

The PRR and Reading Railroad lines ran through Landisville. A trolley line was anticipated. It ran passed the grounds by 1909. Until then, omnibuses offered Lancastrians transportations.

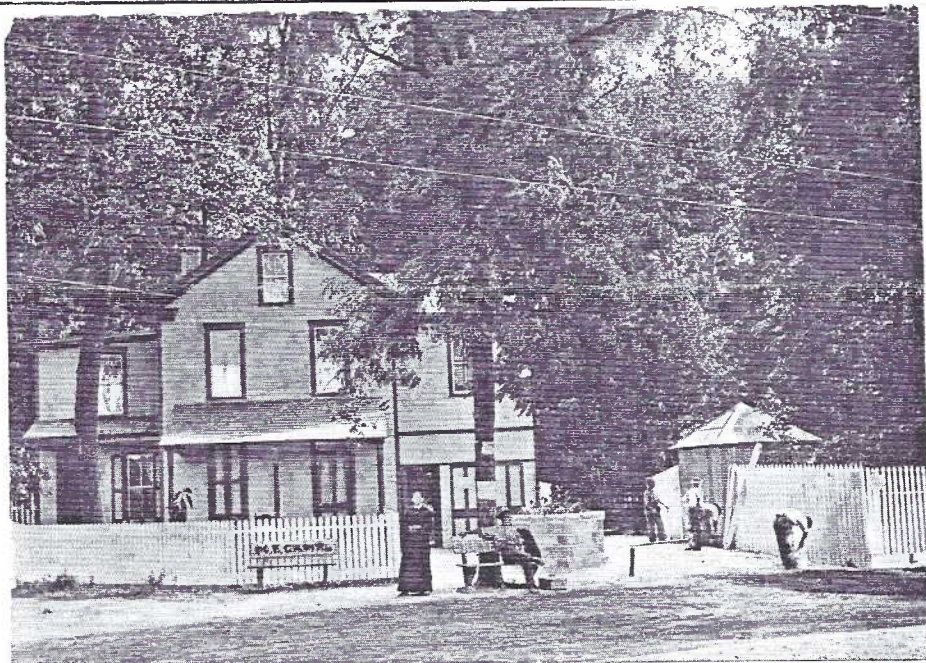


Photo D.B.L. 1913 LODGE AT ENTRANCE OF METHODIST CAMP, LANDISVILLE, PA.

The Gatehouse on this D.B.Landis PC was built in 1913 (the yr. DBL printed the card). It was the caretaker's home. He also had the responsibility of collecting the admission fee of five cents. It still serves as a home but a new entrance is located around the NW corner of the grove.

Visitors are welcomed so choose any day or evening, park at the new entrance, tell them you're from LCPC and walk the grounds. You'll be pleasantly surprised to discover how many cottages and other buildings you can identify with your 80-year old postcards.

### LANDISVILLE CAMP MEETING POSTCARDS

Compiled by Charlie Griffiths, Gerald Hostetter and Jim Ward.

Since most of these cards lack identification of printer and/or publisher, we have included the POST CARD logo from the address side of each. Also, for brevity Landisville Camp Grounds/L.Methodist Camp Meeting is omitted.

Express Printing Co. for unknown publisher

H Pump

Landis Art Press for D.B.Landis

H Lodge at Entrance of Methodist Camp

Landisville Vigil for unknown publisher

H Brooklyn Bridge

H "Brooklyn Bridge"

H Cottages of Col.Patton, Hon.Smith and Mr.McCune

H Cottages of Col.Thuma, H.F. and Abraham Brunner

H Cottages of Mrs.Shirk and Mrs.Sauber

H Double Cottage - Geo.E.Wissner(sic)

H Gate at Entrance

H Geo.E.Wisner's Cottage

H (view of woods)

H Mrs.Harpster, Mr.Haagy

H Old Auditorium

H Paules', Barch, Boyd's Cottages

H Pres. S.H.Boyd's Cottage

H Pump

H Tabernacle

H Young People's Temple

Tichnor for unknown publisher

H Exterior, Tabernacle

H Interior, Tabernacle

Unknown printer or publisher (all read Postal Card)

Dup.views suggest Landisville Vigil Print (see above)

These have been found as undivided and divided backs.

H Bridge from Entrance

H Brooklyn Bridge

H Double Cottage - Geo.H.Wissner(sic)

H Gate at Entrance

POST CARD

POST CARD

Post Card

POST CARD

H H.M.Hall's

H (view w/white cottage far center)

H (view w/cottages close-up on right side)

H (faint view of cottages in distance)

H After 169 years gave way for a bungalow

H McCune's - Smith's - Patten's Cottages

H Mr.Hall

H Mrs.Harpster, Mr.Haagy

H Mrs.Shirk and Mr.Sauber

H New Entrance to Grove (oversized = nearly 4"x5½")

H New Tabernacle

H Northeast view of...

H Old Auditorium

H Pathway to the Camp

H Paules', Barch, Boyd's Cottages

H Paul's - Col.Thuma's - Paules'

H Pres. S.H.Boyd's Cottage (front view w/guests)

H Pres. S.H.Boyd's Cottage (angled view, no guests)

H Pump

H S.H.Boyd's Cottage (oversized = nearly 4"x5½")

H Tabernacle

H Trolley at the Entrance

H Young People's Temple

Unknown printer for unknown publisher

H The Boyd Cottage

Unknown printer for unknown publisher

V Dorwart Cottage

Recap: 26 different views of the 49 published cards.

Seven additional real photo views, all printed from 1904 to the 1920's (stamp box dating). Of these, two cottages identified: Keplinger's and J.A.Watson's.

Postal Card

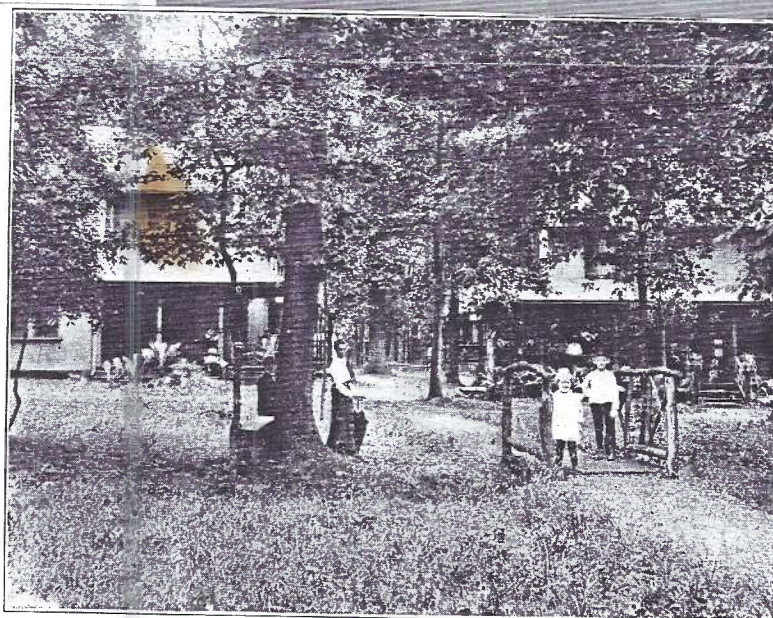
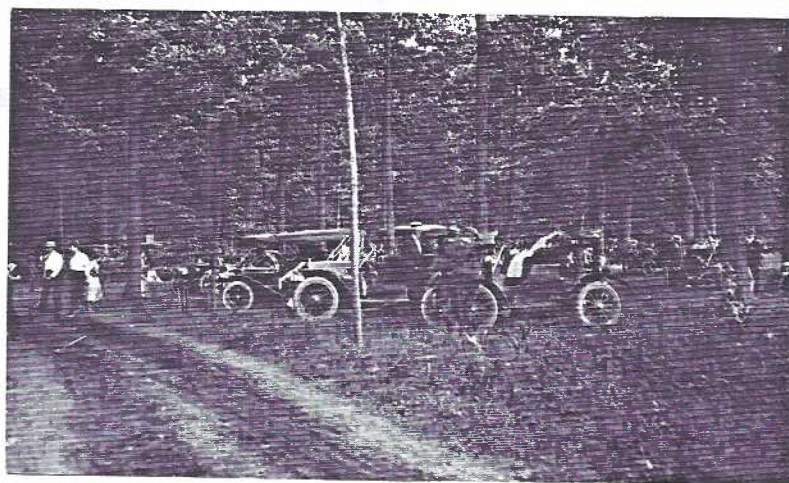
Post Card.

POST CARD

A motion was made in July 1907 that the Postmaster was not to sell cigars at any time and PCs should not be sold on Sundays.

With many fine published cards available, it's still great to uncover a RP like this which is attributed to H. H. Nissley of Landisville. →

Any old camper can understand how a little rustic bridge like this would be called "Brooklyn Bridge" with youngsters using it every summer. →



Brooklyn Bridge—Landisville Camp Grounds



Minutes of August 1941 show the President of LCMA appointed a committee to secure postcards. "500 ea. of 6 views or 1,000 of 3 views for \$8.50". Unfortunately there are no details.

Water was always good, but as residents increased even an artesian well was dug. This is a RP from the 1918-1930 era. ←

61 cottages exist at LCMA today. Camp Meeting is held 1 wk. in July. Some campers now use trailers and tents w/electric hook-up.

LANCASTER COUNTY POSTCARD CLUB AUCTION #22

Follows the business meeting. All items are postcards unless noted.

EXAMINE LOTS CAREFULLY. DESCRIPTIONS ARE EACH MEMBER'S.

Auction Chairman reserves the right to combine lots in the future.

u=used,un=unused,RP=real photo,l=linen,c=chrome,cc=continental chrome

THERE ARE DEFINITELY  
SOME HEAVY LOTS  
IN THIS AUCTION -  
QUALITY & QUANTITY!

- 1 100's of damaged PCs,some non-PC backs
- 2 45 Diff. churches u/un,most 1
- 3 30 Diff. lighthouses u/un,most 1
- 4 30 Diff. boats,ships u/un,most 1
- 5 50+ Trains,trolleys,related u/un,d/b,cc
- 6 32 Diff.fire engines,trolleys,planes  
+ 4 PIPERCRAFT
- 7 4 Diff. flowers,embossed,silk u/un
- 8 7 Diff. Theochrom lovers = series #1103,1979
- 9 24 Diff. romantic,melodramatic,Barnforth most un
- 10 50+ RP people and buildings u/un
- 11 Christmas hold-to-light
- 12 Valentines Day hold-to-light
- 13 St.Louis World's Fair h-t-l (Grand Lagoon)
- 14 St.Louis World's Fair h-t-l (Admin.bldg.)
- 15 8 Lancaster County incl. 2 RP
- 16 8 Mount Gretna
- 17 8 D.B.Landis
- 18 12 Lancaster City incl. 1 RP
- 19 8 Mount Gretna
- 20 6 Coney Island un,1
- 21 Pen-Mar,PA un
- 22 11 Geographic locations
- 23 3 Real Photos
- 24 Hershey Park ballroom
- 25 2 Columbia + 1 Lanc.=St. Mary's Church
- 26 10 Niagara Falls
- 27 15 Pres.Andrew Jackson,wife and home
- 28 15 Foreign un,cc
- 29 15 Churches
- 30 12 State views,c
- 31 12 State views,c
- 32 15 State views (1 lighthouse)c
- 33 25 Views,cc
- 34 25 Views,cc
- 35 25 Views,cc
- 36 6 Camp Harmony(early)all blue tint
- 37 Lititz Square RP looking west at lunch stand
- 38 Record Postcard/Old Man of the Mountain
- 39 4 diff.Grand View Pt.Look-out photo cards
- 40 650+ Excellent mix worth a careful look
- 41 c.450 Lancaster City,County,some dups
- 42 c.450 Lancaster City,County,some dups
- 43 750+ Views, u/un, c
- 44 450+ Acetate sleeves in lg.file box
- 45 600 Vinyl sleeves in lg.file box
- 46 Cigar box of sleeves
- 47 180 Old holidays in cigar box
- 48 Woolworth album w/43 pages
- 49 100 pgs.,8 PC albums and carrying crate
- 50 24 Tuck Christmas,Easter,birthday
- 51 19 Canada
- 52 2 Santa in Huld's Installment puzzle  
(#9c and #9d)
- 53 2 Kaiser-Frazer auto factory and home
- 54 Budweiser/Clydesdale 8-horse hitch fold-card

Have a SAFE & SANE Vacation  
Buy POSTCARDS and stay home!

- 55 8 Ephrata=Main St.,Farmers Bank,Legion,etc.
- 56 Hillary Rodham Clinton Medical Dictionary PC
- 57 13 Cats
- 58 4 Lititz
- 59 8 RP = people
- 60 7 Scranton
- 61 8 Williamsport
- 62 9 Gettysburg
- 63 9 PA = Hrsb.,Pittsbg.,Allentown
- 64 10 PA = Ashland,Bradford,Del.Water Gap
- 65 8 Italy = Taormina
- 66 11 Italy = Venezia & Analfi
- 67 9 RP Barcelona
- 68 12 Mexico
- 69 14 Switzerland
- 70 55 RP u/un
- 71 125+ Greetings,comics,birthdays u/un,d/b 1-c
- 72 30 Churches u/un,1-c
- 73 35 Ships u/un,wb 1-c
- 74 50 Motels
- 75 45 Restaurants/inns u/un c,cc
- 76 50 Colleges/Universities u/un 1-c
- 77 43 Bridges u/un,wb,1-c + 3 non-PC
- 78 75 Foreign u/un
- 79 20 Religious u/un,most 1;some non-PC
- 80 Shoebox u/un, 1,c,cc
- 81 Electric chair,Ohio penitentiary un,d/b
- 82 2 Salon cards("this card should be mailed in env.")
- 83 University of Notre Dame u/b,u
- 84 Crosley "car of tomorrow" & Crosley bldg.(NY fair)
- 85 5 1976 Russian = autos,'43 jeep,'35 truck,un,cc
- 86 3 Diff. Independence Island(Hrsb.)incl. rope ferry
- 87 Lititz Square decorated arch for July 4,1905 un/b,u
- 88 RP-"Our Pets"at orphans' home,Topton,PA,u/un/b
- 89 RP-Christiana baseball team c.1912
- 90 RP-Lancaster Photographer Dengler's Easter PC
- 91 RP-Manheim cigar factory of Eisenlohr,pm 1913
- 92 RP-Millersville Normal Sch. library,pm 1905
- 93 RP-Millersville Normal Sch. lake bridge,pm 1906
- 94 4 RP Columbia fires (3 identified)
- 95 47 Mount Gretna views (6 are military camp)
- 96 14 Diff.Lanc. Ridgeway/O.H.Shenk western tours; wb
- 97 6 Diff. "cocoa can" Hershey bar PCs
- 98 Album of 50 fancy greetings = silk,etc.
- 99 Box of 19 3-ring binders to fit PC pgs.,diff.sizes
- 100 Set US Navy semaphore pcs,1908
- 101 10 Trains,cc
- 102 Set(100)=100th Anniversary/Hershey;trading cards
- 103 Set (5) = Railroad Women's Postcards (cc photos)
- 104 7 Trains,cc
- 105 9 Trains,Street cars,c
- 106 9 Trains,Street cars,c
- 107 16 Train,depot cards,incl. 1 RP,some 1
- 108 5 cc mixture,Eagle Am.Museum.Strasburg + 2 Worl  
Fair ticket items,1939 and 1982

NOTE

Sellers are asked  
to wait until the end  
of auction for payment.

GIVE THE COMMITTEE  
A CHANCE TO PARTICIPATE  
IN BIDDING,TOO