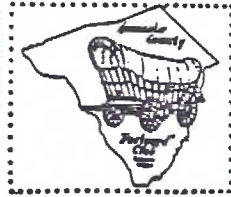


The Card

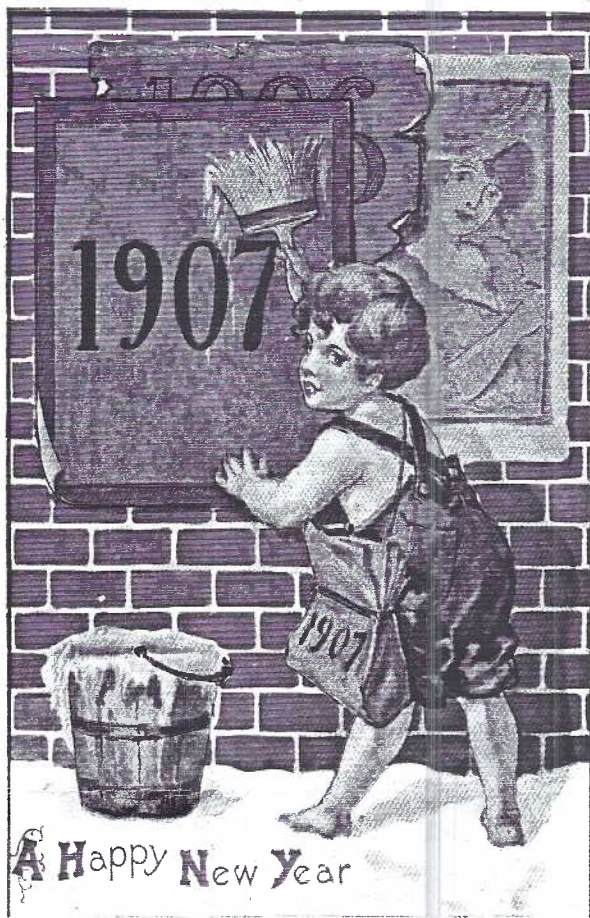
MONTHLY PUBLICATION OF
LANCASTER COUNTY POSTCARD CLUB
LANCASTER, PENNSYLVANIA

MEETINGS: 3rd MONDAY
FAITH UNITED
CHURCH OF CHRIST
1204 WABANK STREET
LANCASTER, PA



Jan.1997 Vol.8, No.1 #85
NEXT MEETING - Mon., 7 pm
January 20, 1997
Buy/Sell/Trade from 5:30

Yearly membership is \$8(\$2 extra for ea. member same address) payable to LCPC c/o Dorothy Fry, 1050 Kleinfeltersville Rd., Stevens, PA. 17578. Ads: \$15 full page, \$8 1/2 page, \$5 1/4 page, PREPAID WITH AD COPY. Classified ads FREE. Send ads, articles and correspondence to: Jim Ward, 1795 Kleinfeltersville Rd., Stevens, PA., 17578.



1703

COPYRIGHT 1906 ULLMAN MFG. CO., N. Y.

From Ullman Mfg.Co., NY, a 90-year old New Years PC, #1703 shows Baby New Year old enough to advertise his year, pasting 1907 handbill over the old 1906.

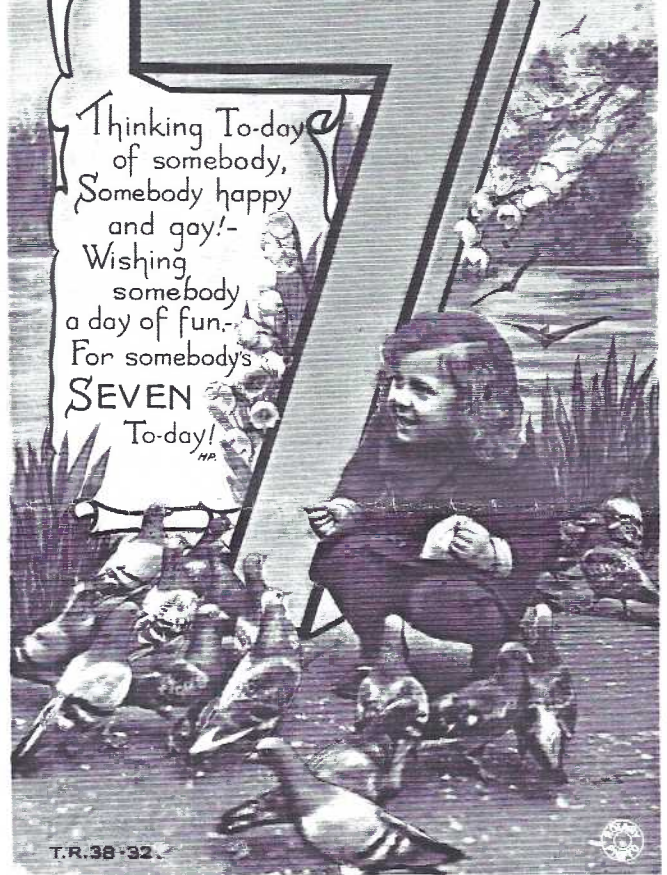
1907 - 1997
90 Years of Great Postcarding!

THE CARD

STAFF: Dot Fry, Gerald Hostetter, Jim Rudisill, Jean Frank
EDITOR: Jim Ward ADDRESS CHANGES: Gwyn Fulmer
CIRCULATION: Harold Fry. CORRESPONDENCE: See masthead.

LOTS of BIRTHDAY GLADNESS
NOW YOU ARE

Thinking To-day
of somebody,
Somebody happy
and gay!-
Wishing
somebody
a day of fun-
For somebody's
SEVEN
To-day!



T.R.38-32.

HAPPY BIRTHDAY, Everybody! We're seven years old this month! 'Seems such a short time ago we saw a baby in this space...now it's a youngster - full of spirit! This Rotary Photo PC is typical good quality of the London-based company. It's tinted with a lemon yellow "7", the child's coat a bright red, the vegetation all tinted green. Printed in London, has no cancellation, but it's message tells us it was wartime. "To my dear Pat with lots and lots of love and kisses. Wishing you many happy returns of the day from Daddy. So sorry I am not able to be with you, dear, but never mind, I'll be down when I get my Holidays. Good night and God bless you and all dears. You must write me another letter. We have raids each night since Tuesday night's warning. Again tonight at 8:30 plenty of bangs from guns. Ta-ta." Let's hope he made it home.

NEW OFFICERS and DIRECTORS OF YOUR CLUB

The following officers were elected by the membership at the December meeting.

As you can see, Ruth Frankhouser can use some assistance from a Vice President. A volunteer would be greatly appreciated. The VP's job is to substitute in the absence of the Pres. and to chair the Program Committee (much of which Ruth has accomplished in advance while VP in 1996) - see listing elsewhere.

President Ruth Frankhouser, New Holland, 354-7611
Secretary Jeannine Spece, Lancaster, 393-3036
Treasurer Barabra Mowrer, Columbia, 684-5331
Directors:
Harold and Ruth Moyer, Blainsport, 336-6644
Walter Mowrer, Columbia, 684-5331
Mary Darrenkamp, Lancaster, 397-0556
Brian Frankhouser, New Holland, 393-3036
Ruth Yohe, York, 244-5978

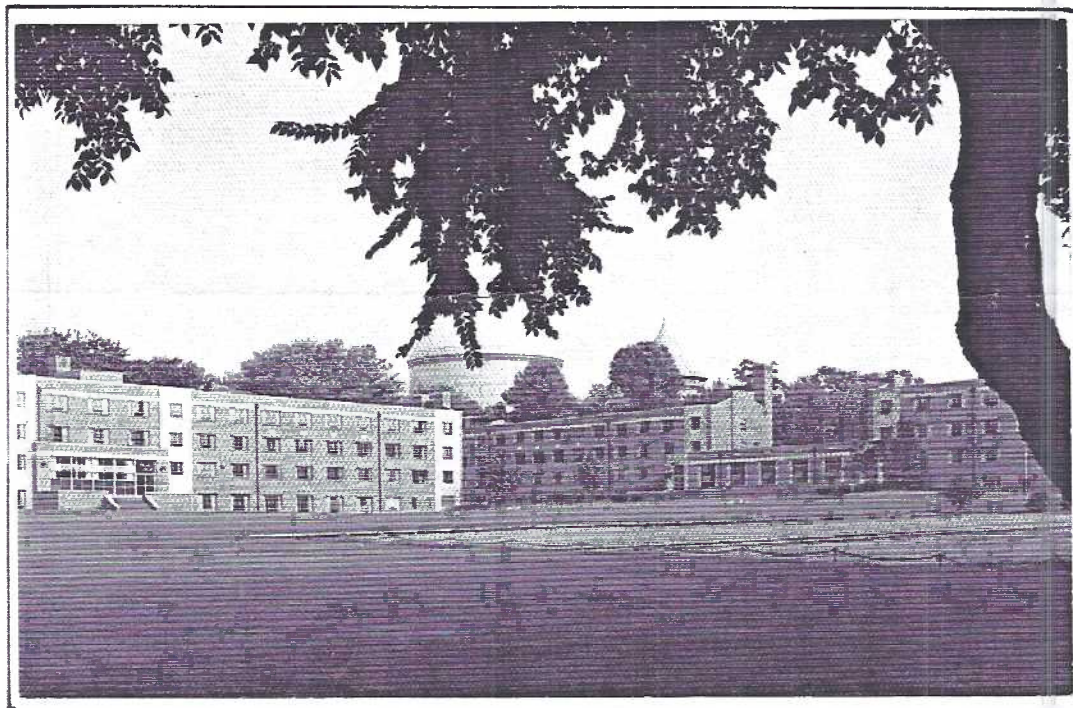
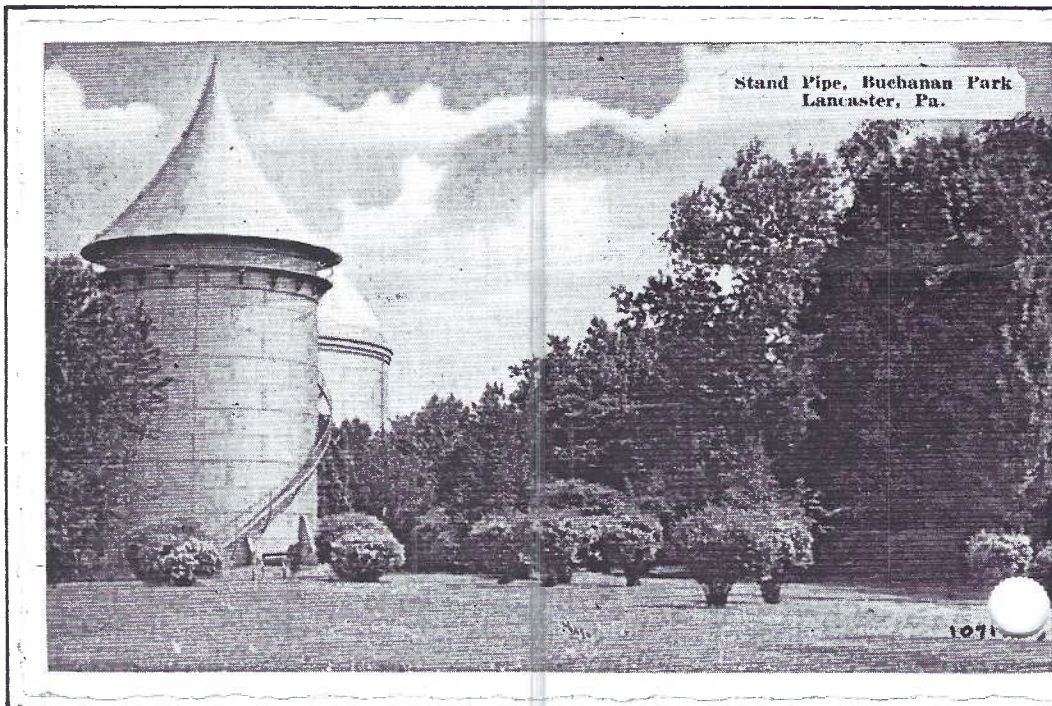
THERE GOES GEORGE...AND MARTHA, TOO!

For nearly 65 years Lancaster City residents and visitors have lived with the two gigantic water storage towers on the border of Buchanan Park and the Franklin and Marshall College campus in the city's West End.

1996 ends its year with the razing of these two landmarks. Once again Finance is the reason. No longer needed for water supply, they have deteriorated and preserving them would have cost \$200,000, a price too high for sentimental value.

Once again, postcards may be the principle source for views of our Past. **Stand Pipe, Buchanan Park, Lancaster, Pa.** is the caption on this Silvercraft b/w card #10717. It was printed by Dexter Press, Pearl River, NY. The smaller tank, "George" is to the left with "Martha" in the rear.

(has deckle edge)



Oh, yes - the names? Post-puberty students at F&M claim the "distinction" of naming the water storage tanks while heads of History, Anatomy and Psychology Departments all file disclaimers.

The 'smaller tank, "George" (with the pointed top) was "generally conceded to be the most artistic and beautiful water tank in the country" according to the Pa. Manufacturers' Journal, April 1930. It was constructed in 1925 by the **Lancaster Iron Works** which fabricated a huge settling tank for the Lancaster City Water Dept. as well as "hundreds of tanks and stacks in the City and County".

"Martha", the larger tank with the mammoth dome, was built in 1932.



Another Dexter Press PC, this one in color, is titled **Dormitory Quad, Franklin & Marshall College, Lancaster, Pa.** with the water tanks in the center background. Identified as FM7 and #38691-B, it was published by Wyer Photocards, New Delhi, NY.

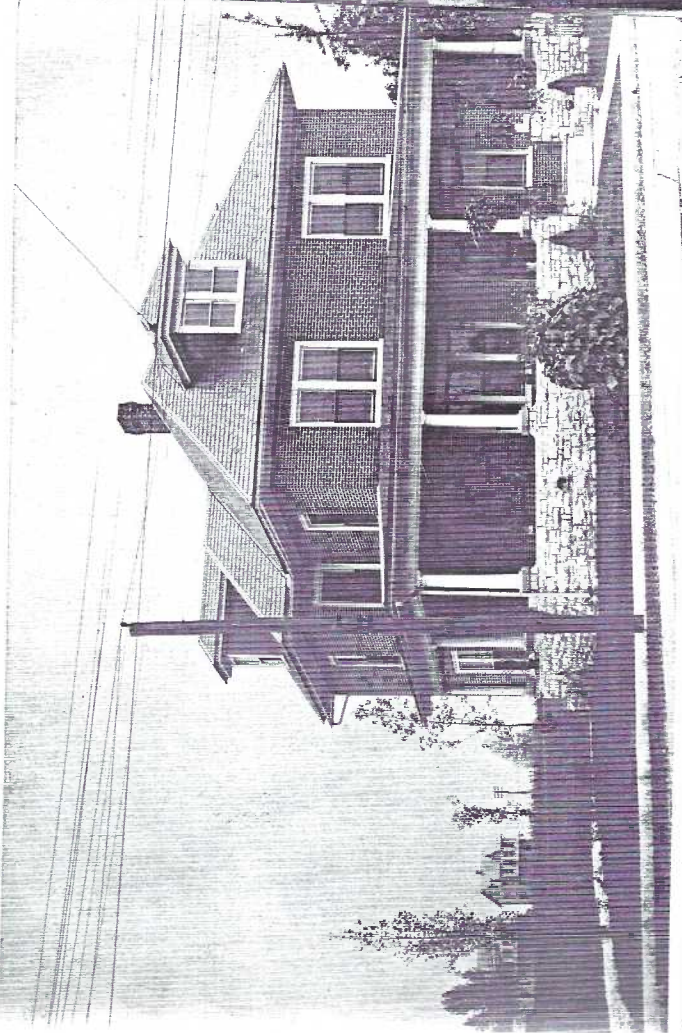
Silhouettes of George and Martha Washington by Nellie Custis "from 'Shadow Picture' made at Mount Vernon, 1798" on postcards by The Albertype Co. of Brooklyn, NY.

THE KINZER-MUSSELMAN CONNECTION, NEW HOLLAND, PA. By Brian Frankhouser

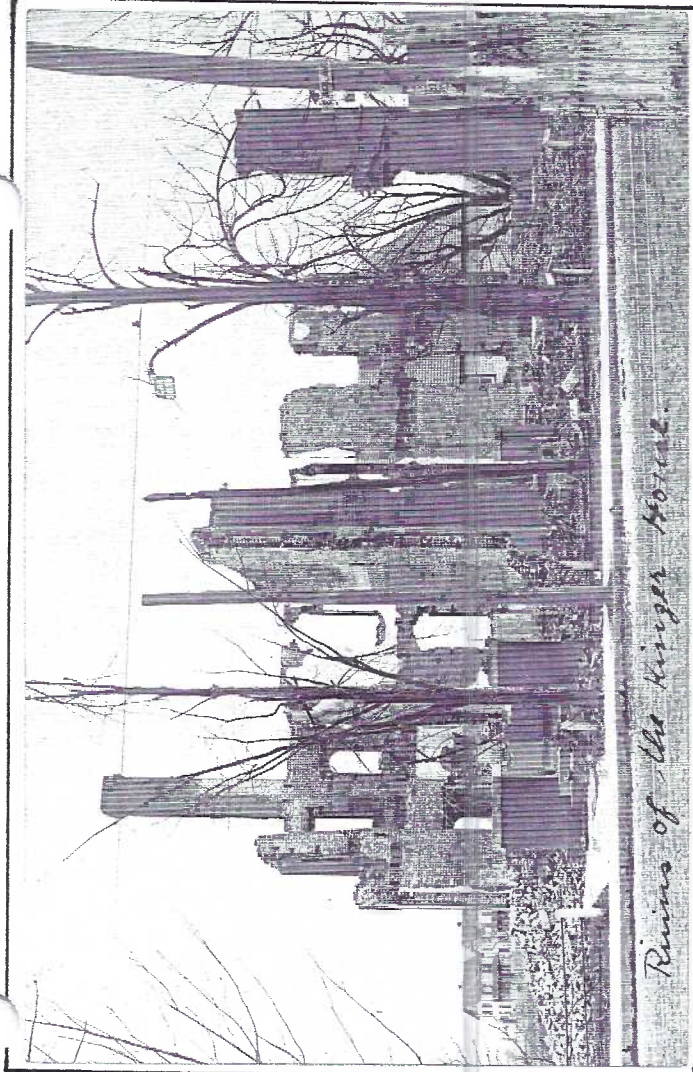
It all began on a cold March day in 1911 when Mrs. Louise Kinzer was cleaning her shawl with gasoline on her back porch. When she finished, she told her maid she was going inside to warm her hands by the stove. Minutes later the gasoline fumes from her hands exploded and burned over two-thirds of her body. She was rushed to the hospital using the fastest transportation available - the 2:30 trolley. The widow Kinzer died shortly after arriving at Lancaster General Hospital.

When George Kinzer arrived home from Philadelphia that fateful day, he found that he had lost not only his mother, but all his personal possessions. George lived in the west side of the duplex and, according to a story that appeared in the New Holland Clarion, he carried very little insurance on his half of the house. Within four months he sold his business on Brimmer Avenue to George and Samuel Musselman. (Musselman Lumber is still operating under the ownership of Geo. Musselman's grandson.) Mr. Kinzer also sold the property where the tragic fire occurred. The new owner, by coincidence, was George Musselman. Editor's note: Brian was born in the new home which was built by his great-grandfather, Geo. Musselman.

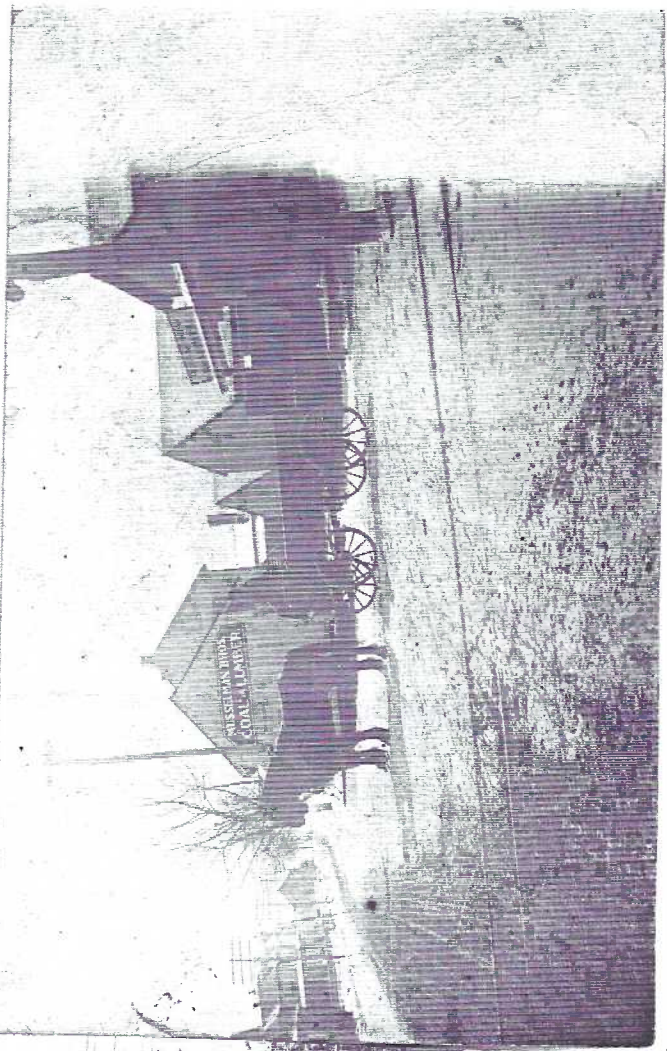
Message on card, right, reads "This card was gotten by my self the 14th day of Mar. 1911. The fire occurred the 7th. in the boro of New Holland".



A real photo PC of 392 E. Main St., New Holland taken two years after the Kinzer fire. Much has changed, but the same telephone pole remains in front of the Musselman home. The PC was probably printed in quantity by the Musselmans for mailing. An expanded view cabinet photo exists.



This real photo postcard shows the remains after the Kinzer fire. It was probably printed in quantity and sold at one of the local stores.



A real photo postcard shows Musselman Bros. Lumber Yard shortly after it was purchased from George Kinzer. This PC view is probably unique.

SPECIAL POSTCARD AWARDS

CARD Editor Recognizes Contributors

At the December Christmas Party/Meeting Jim Ward, editor of THE CARD, presented to LCPC members postcards printed especially for those who have "helped to make writing the 1996 issues an easier job". He reminded the members that many other postcard club editors lack help from their members. A trend is towards smaller newsletters or none at all.

The PCs (see sample) are a limited issue for just this occasion. The 1996 issue is a local trade card, with alterations married to a unique postcard back.

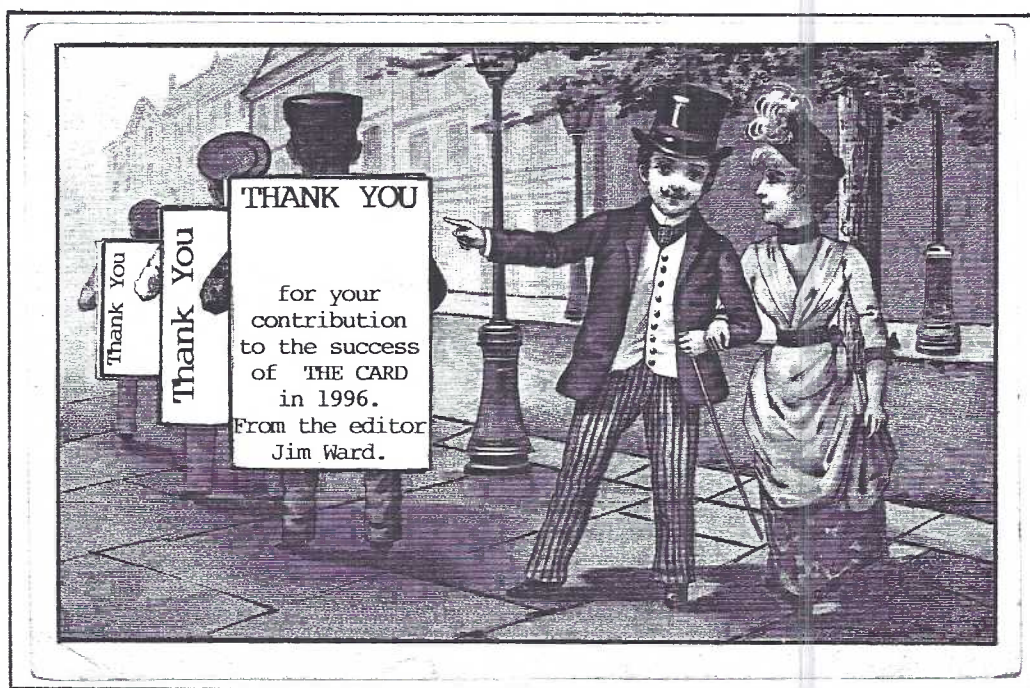
Members who were recognized for contributions of material and time: **Betty Brown** local Union Stock Yards info; **Becky Buckwalter** report on PC stories in magazines; **Bill Buckwalter** report on Rte.#66 PC story **Jean Frank** proof-reading A.Hutaf, Angels, The Elfking, A Monster Storm, Out Our Way and Heraldry.

Brian Frankhouser follow-up checklist on New Holland, PA PCs w/revisions (available from him); **Dot Fry** translations for Language of Stamps, Georgia O'Keeffe info and monthly proof-reading; **Harold Fry** chairing the CARD's Mailing Committee.

Gwyn Fulmer supplying monthly mailing labels, address changes and Membership Roster; **Jere Greider** PCs w/local views on stamps; **Charlie Groff** PCs w/local views on stamps; **Newt Groff** Barrose delivery truck RP card; **Bernie Heisey** PCs w/local views on stamps and contribution of PCs to Linc.Hwy.book plus promotion of the book.

Harold Moyer translations for Language of Stamps and follow-up report on Expo Exhibits; **Ruth Moyer** Report on Expo Exhibits and McDonald's Sticker PCs; **Dolores Rowe** PCs w/local views on stamps; **Jim Rudisill** Heraldry article plus info. on Angels and The Elfking and artwork as needed.

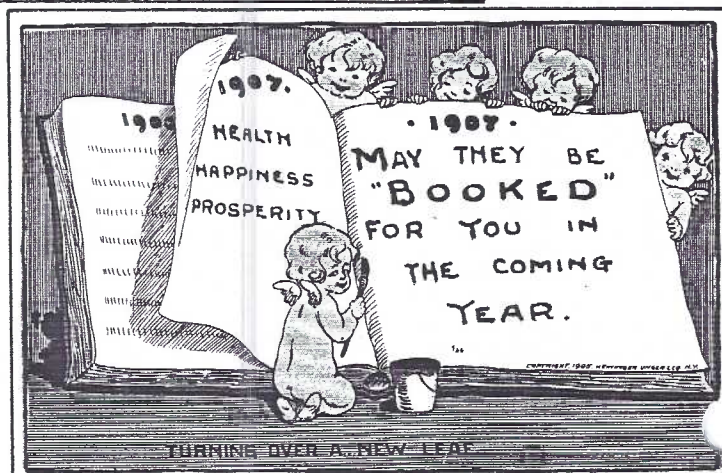
Dede Schaeffer report on Caulkins/PC speaker at York meeting; **Bill Seigford** PRR Sesquicentennial info **Betty Weaver** Elizabethtown businesses on PCs; **Norman Zimmerman** regular preparation of auction info. And last, but not least **Gerald Hostetter** for Donegal Church checklist, Piquette P.O. history incl. W.Piquette trip, Landisville Camp Meeting Checklist as well as countless discussions at our bi-monthly staff sessions. JW also gave himself a PC for "general work".



CLASSIFIED ADS

CLASSIFIED ADS are FREE to any member. Keep to 50 words or less. Copy must be to editor by the 1st of each month to appear the following month.

- ✱ I will pay a finders fee of \$10 per Public Auction or Sale Bill you find with either of these names: Parke Shaub, Auctioneer; Simon Groff, Auctioneer; Earl Pickell, Clerk. Thank you,. **Sandra Shaub #49.**
- ✱ Will pay \$4 or more for any ugly Valentine PCs I need having red, blue or yellow borders marked Series 308. Buy other "vinegar Valentines" too. **Jim Ward #1.**
- ✱ I will be bringing cards for sale to the Jan. meeting Most have never been for sale before. Fresh stock at good prices. **Mike Middletown #419**
- ✱ Buying Bermuda postcards published by Teich for the Yankee Store between 1930 and 1960. **Jack Walsh #365**



Another 1907 dated New Years card we found with cherubs has a 1905 copyright by Heininger, Unger & Co. of New York. As you might expect...an undivided back. THE CARD staff wishes everyone a VERY GOOD NEW YEAR!

POSTCARDS IN THE PRESS

Deltiology, the world's third most popular hobby, appears more and more frequently in magazines and newspapers.

Harold Galebach brought us the Orlando Sentinel of Mar.31 which had a 4-page article. The cover featured three full-size alligator border postcards.

Brian Frankhouser drew our attention to Antique Week's Oct.7 issue and a fine 2-pager associating an RFD 32¢ stamp commemorating 100 years of Rural Free Delivery in the USA with many related postcards.

Harvard, in its Sept./Oct. Treasure, explains how PCs provide historical insight to researchers. They use the university library's 95,000+ cards. We thank Frank Coho for this contribution.

The Feb./Mar. issue of British Heritage showed three full-color comic cards in its Acquiring Minds column. The subject was Leap Year and Betty Weaver's brother drew our attention to the 2-page story.

Thanks to all.

Let us know what YOU find in print about PCs.



THANK YOU, Charlie Groff and Stephanie Griffiths. who each gave \$25 Christmas presents to LCPC. Steph, as a memorial to her dad, member #4 Charlie Griffiths.

ADDRESS UP-DATE

These changes, additions and corrections have occurred since the printing of the last Member Roster:

- #11,115 Beck, Tom and Betty 11 Cinder Hill Rd., Lititz PA, 17543
- #48 Bill Seigford 314 Conoy Ave., Elizabethtown, PA, 17022
- #64 Stan Hopkins 10 Kristen Heights, Parry Sound, Ontario, Canada, P2A 2Z6
- #97 Marguerite Ochs 1500 Bishop Estates Rd., #32B, Jacksonville, FL, 32259
- #135 Betty Gregg Box 344, Paradise, PA, 17562
- #148,149 Charles and Doris Moore 1659 Leona Ave., Lancaster, PA, 17601-4489
- #198,199 Paul and Jean Beam 922 Walnut St., Honeybrook, PA, 19344
- #257 Fava Sherrard Millcroft Apt.300, 255 Possum Park Rd., Newark, DE, 19711. Ph.1-302-737-3122.
- #280 Janice Weitzel 163 River Bend Park, Lancaster, PA, 17602
- #286 Sally Tullis 100 Longridge Court, Timonium, MD, 21093
- #335,336 Miriam and Jay Robt. Miller 77 Charlestown Rd., Washington Boro, PA, 17582
- #127 Stephanie Griffiths 3133 Conn.Ave. ^{NW} Apt.#925, Washington, DC, 20008-5111.



West Virginia State Bird

LAST MINUTE FLASH Daily calendars with 300 full color "Victorian (postcard) Charms" might still (12/96) be in stores = \$9.99. Discounted up to 30%!

HAVE YOU FILLED YOUR FEEDER TODAY?

Capital Engravings, Pequot Lakes, Minnesota published a set of full color STATE BIRDS in 1968. The set of 50 PCs can be completed with moderate effort. Its deckle edge doesn't show on this W.Virginia example. The cardinal is shared by Illinois, Indiana, Kentucky, N.Carolina, Ohio and Virginia as their favorite bird, outranking the robin, bluebird and meadowlark in this popularity contest.

YOU can be popular with your neighborhood birds if you keep your feeders full. Should you see an unusual bird at your feeder or even one you can't identify,

call any of these LCPC members who are willing to help you: Ray and Shirley Bubb 73 W.Roseville Rd. in Lancaster at 569-7155, Mary Ann Sherer 2124 Elizabethtown Rd., Manheim at 665-4308 or Jean and Lew Frank in Baypoint, Maine at 1-207-371-2474. If the bird is VERY UNUSUAL they'll put it on the Bird Hot-line and your yard will be swamped with birders from neighboring states - guaranteed!!

Speaking of SWAMPED - a postcard prize to each member who sends THE CARD the names of the states that honor a chicken as their state bird. Answer must be on a standard size postcard to be eligible.

BATHROOM HUMOR - A FACT OF LIFE

Rated R-17 (not for the squeamish)

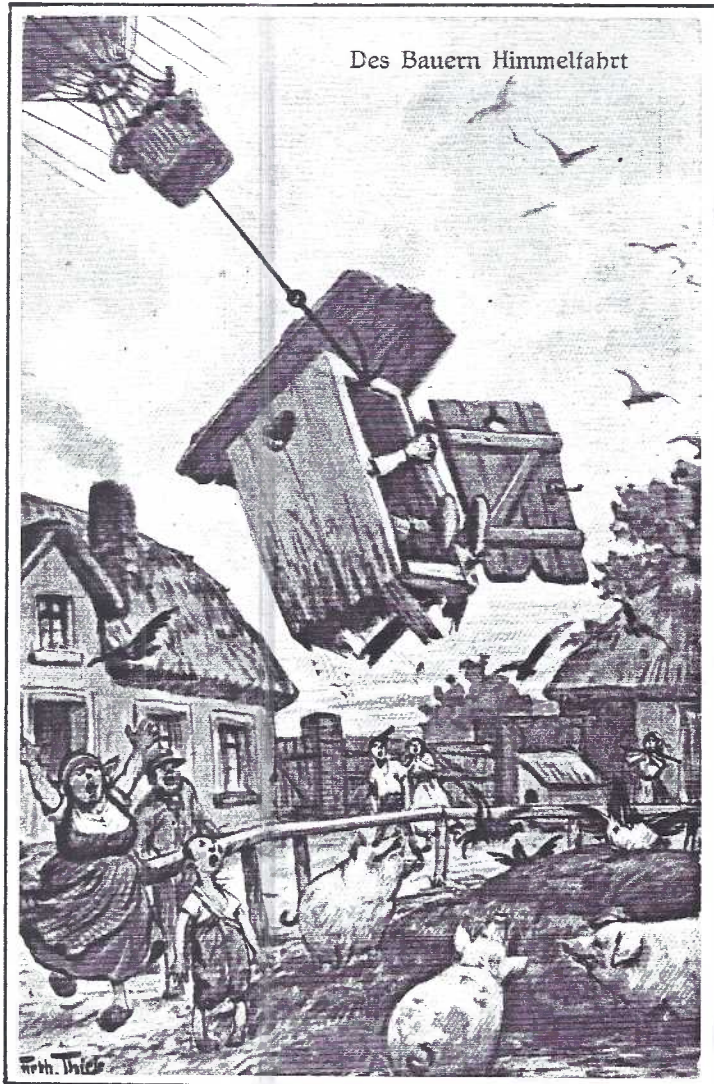
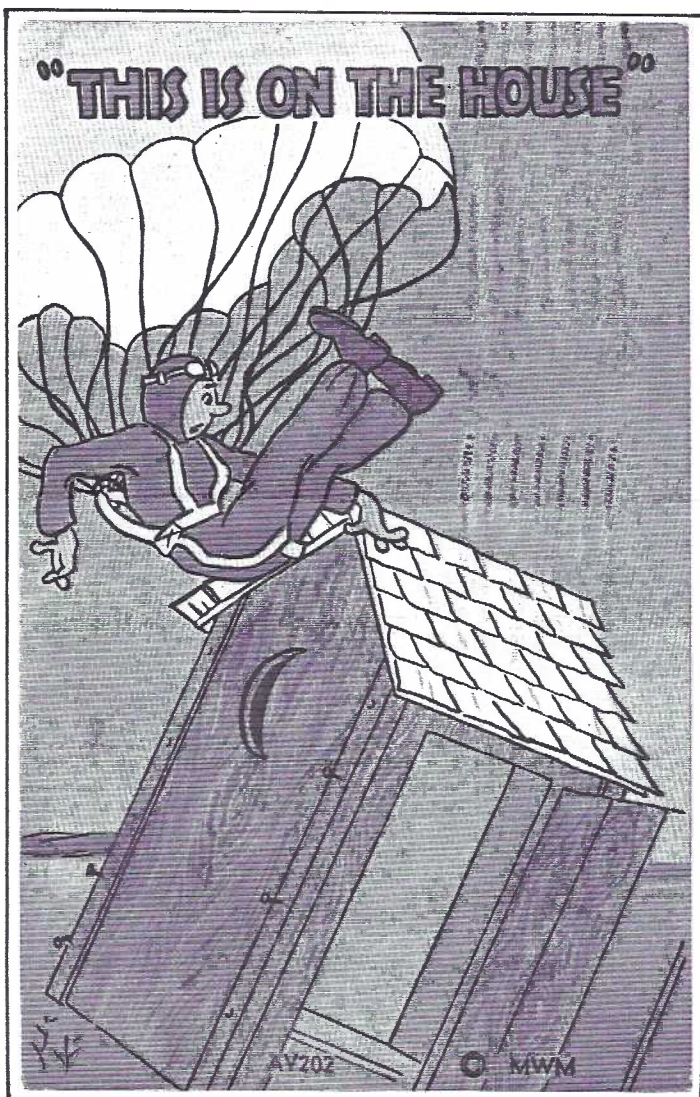
If you lived with an OUTHOUSE you talk about the anecdotes and accidents with a grin or a chuckle. The event was very real (even a disaster) when it happened but time has eased the pain and made terrible times laughable. If the 'pain' was someone else's, it's even funnier. Aren't we sick - the way we laugh at other people's misery? Postcard publishers, that sly lot, fed appetites for bathroom humor from the Golden Age through modern chronicles.

A member who's not afraid to delve deeply into the subject is **Norman Zimmerman**. He'll tell you to ease into OHs with chronicles (50¢ to \$2) and linens (50¢-\$3). Norm has 178 OHs = 50% linens, 45% chronicles with a handful of real photos. A few depict persons, blinded by urge, discover they've used a telephone booth! Then there are the urban dimwits who've entered an out-house and can't find the phone!

In case our readership threatens to wipe out the staff should it dig deeper into bathroom humor, we'll straighten out a few facts.

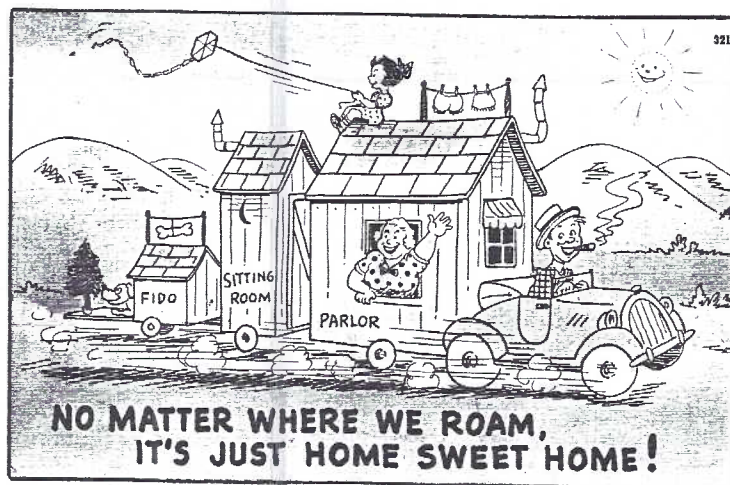
You've heard **Thos. Crapper** revolutionized indoor plumbing with a valveless waterwaste preventer? True, but the 'crapper' was an endearing term for hundreds of years before Tom. It derives from *crappe* (crop) and refers to *crop refuse* = chaff. The flush toilet dates to 1589 when another Englishman did they have a fetish for the toilet? **Sir John Harrington**, a godson of Queen Elizabeth I, invented the first contraption.

So, please sooth your wife's ears and be historically correct by calling it not the **Crapper** but the **John**.



"THE FARMERS ASCENSION (heaven-trip)" by A. Klausz of Leipzig. The outhouse appears in all eras of PCs. You would correctly expect, since Germany was the leader in early PC printing, it produced the best early OHs.

Popular artist Arthur Thiele produced and signed this outhouse masterpiece.



Starting an OUTHOUSE collection, you'll most likely begin with linens made in the USA. The parachutist by **MM**, #AV202, is a common WWII aviation card. A greater challenge would be OHs in transit. From my collection of 38 "hitched homes" (all linens), only two include a tag-a-long OH. #72133 is shown above (reduced).



Two unidentified publishers, German and French, chose to exhibit their versions of a water closet in use with captions that might appropriately be used to describe their legislative houses. Perhaps their esteem for political bodies equated with those of the private chamber.

With only minor differences, each of the d/b postcards (right) read like a news article covering the Nation's legislatures.

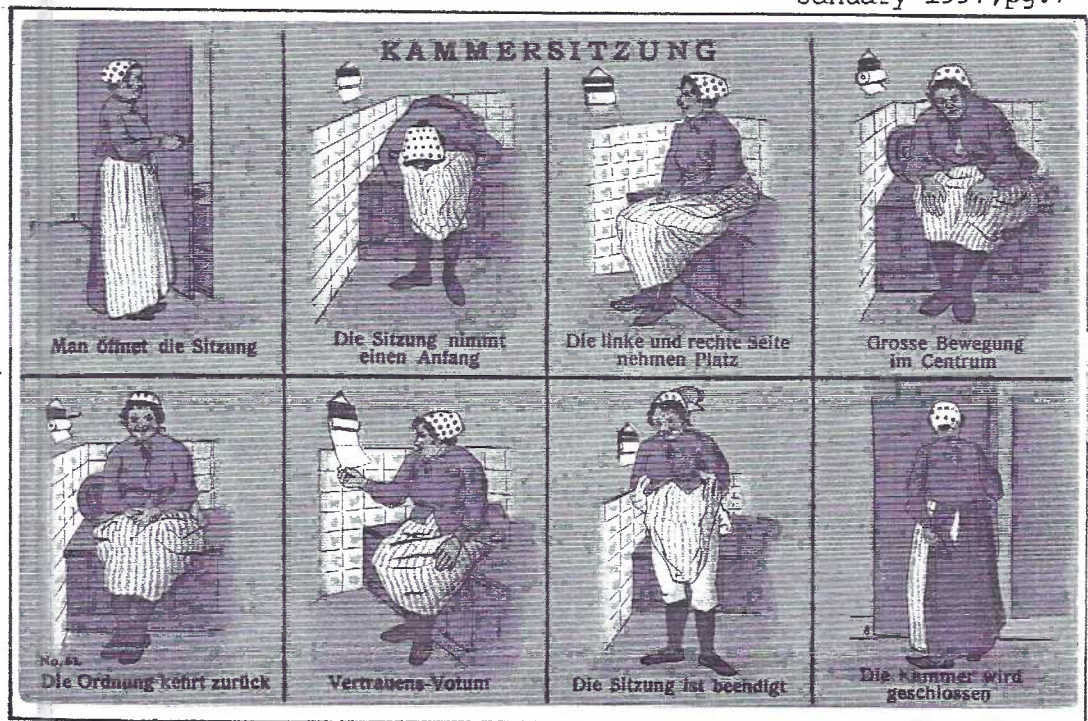
Meeting in Chambers

Reading left to right, top to bottom-

- 1 The chamber is opened
- 2 The session begins
- 3 The left and right sides take their places
- 4 Great commotion in the center
- 5 The affairs dropped/Order returns
- 6 Papers delivered/Vote of trust
- 7 The session ends
- 8 The chamber is closed

The German PC. *Kammersitzung* is in full color. The French is b/w.

An 8-card set from Netherlands depicts a lady going through the movements w/captions written in Dutch, German, French and English.



THAT'S PROGRESS!



Chrome Color Card #C1665, by Scenic Art, Berkeley, CA.

Jas. Whitcome Riley wrote a 48-line ode "Passing of the Back-House" the last lines of which close our 2-pg. spread on the same.



And still I marvel at the craft that cut those holes so true,
The baby hole, and the slender hole that fitted Sister Sue.
That dear old country landmark; I've tramped around a bit,
And in the lap of luxury my lot has been to sit —

But ere I die I'll eat the fruit of trees
I robbed of yore
Then seek the shanty where my name is carved upon the door,
I ween the old familiar smell will sooth my faded soul,
I'm now a man, but none the less I'll try the children's hole.

John Klein Postcards



**Exit 21
Pa. Turnpike**

**Saturday 10-5
Sunday 8-5**



EXHIBIT WINNERS



It was difficult to make an exact count for attendance with a room full of beautifully decorated tables, the Christmas tree, a kitchen full of elvettes and "fressen" from the 20' serving table to a dozen more nicely decorated eating tables. Estimates were from 60 to 65 members and guests - considerably more than last year when a storm threatened.

Dot Fry conducted the exhibit board competition and everyone enjoyed HOLIDAY presentations.

RUTH MOYER	FIRST	Beware of Santa's Switch
JIM WARD	SECOND	Mobile Santas
SUSAN GLASS	THIRD	Wishing You a Purr-fect Holiday Season

HONORABLE MENTIONS

EARL CARVER	Holidays
DON DAVIS	Holi-Daze
BRIAN FRANKHOUSER	New Year Greetings-Only
	90 Years Old
HAROLD MOYER	Fill My Stocking

January's theme for boards* is BIRTHDAYS (never could there be a wider choice of postcards)!

February will be lovey-doveys. (OK, Dot. That will include Valentines...not?)

*Harold Moyer, our Property Chairman for several years, faithfully assembles and dismantles the easel for our monthly exhibit boards. A big "THANK YOU, HAROLD". The easel holds 16 boards - so let's fill it and then some for January. We've done it before!

TRADE CARD GOES LOCAL

Jim Ward, LCPC member #1, edits the TRADE CARD, and announced to its subscribers that beginning with issue #6, due in early 1997, the contents would focus on local businesses which issued advertising cards prior to the Golden Age of Postcards.

The period of 1870 to 1900 saw thousands of these colorful cards find their way from stores to scrapbooks. The chromolithography of many was superb. To many collectors, though, it's the historical connection to their hometowns that attracts them. And it's for this reason that Jim will devote the lion's share of future issues to Lancaster City and County Trade Cards.

He reminds interested LCPC members that beginning a subscription with issue #6 in no way jeopardizes their knowledge of the subject. A subscription to issues #6 through #10 is \$7.50 or, if you'd like a colored page or two in each issue, the subscription is \$12.50. Add \$2.50 for mailed subscriptions. A few back issues of #1 through #5 are still available.

BAD WEATHER CONNECTION



Since they are strategically located across the county, the Officers and Directors might well serve as a "Bad Weather Connection" Hot-Line. If you're undecided about whether we'll have a meeting, call any of the members listed. Some work, so try several.

President **Ruth Frankhouser**, New Holland, 354-7611

Secretary **Jeannine Spece**, Lancaster, 393-3036

Treasurer **Barabra Mowrer**, Columbia, 684-5331

Directors:

Harold and Ruth Moyer, Blainsport, 336-6644

Walter Mowrer, Columbia, 684-5331

Mary Darrenkamp, Lancaster, 397-0556

Brian Frankhouser, New Holland, 393-3036

Ruth Yohe, York, 244-5978



January - SHOW AND TELL by the membership. Theme is An Interesting Postcard. 1 card per member; 2 min. max.

February - THE LINCOLN HIGHWAY. We're so familiar with it and we take it for granted. But when **Bernie Heisey** shows us just a small part of his extensive collection we'll be amazed at how much has disappeared before our very eyes.

March - MEMBER AUCTION.

April - Why not YOU? We have both an opaque projector and a slide projector or your own format.

This is your last issue, so please...

Renew Today!



Send \$8 per member plus \$2 for each additional member at the same address to LCPC, c/o Dorathy Fry 1050 Kleinfeltersville Rd., Stevens, PA. 17578. Thanks.