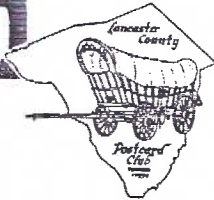


# The Card

MONTHLY PUBLICATION OF  
LANCASTER COUNTY POSTCARD CLUB  
LANCASTER, PENNSYLVANIA



MEETINGS: 3rd MONDAY June 1997 Vol.8, No.6 #90  
FAITH UNITED  
CHURCH OF CHRIST NEXT MEETING - Sun., 1 pm  
1204 WABANK STREET Sunday, June 22, 1997  
LANCASTER, PA. Arrive as early as Noon.

Yearly membership is \$8 (\$2 extra for each member at same address) payable to LCPC, c/o Dorothy Fry, 1050 Kleinfeltersville Rd., Stevens, PA., 17578. Ads: \$15 full pg., \$8 1/2 pg., \$5 1/4 pg., prepaid with copy. Classified ads FREE to members. Corres. to: Jim Ward, Ed. 1795 Kleinfeltersville Rd., Stevens, PA., 17578. Ph. 721-9273.

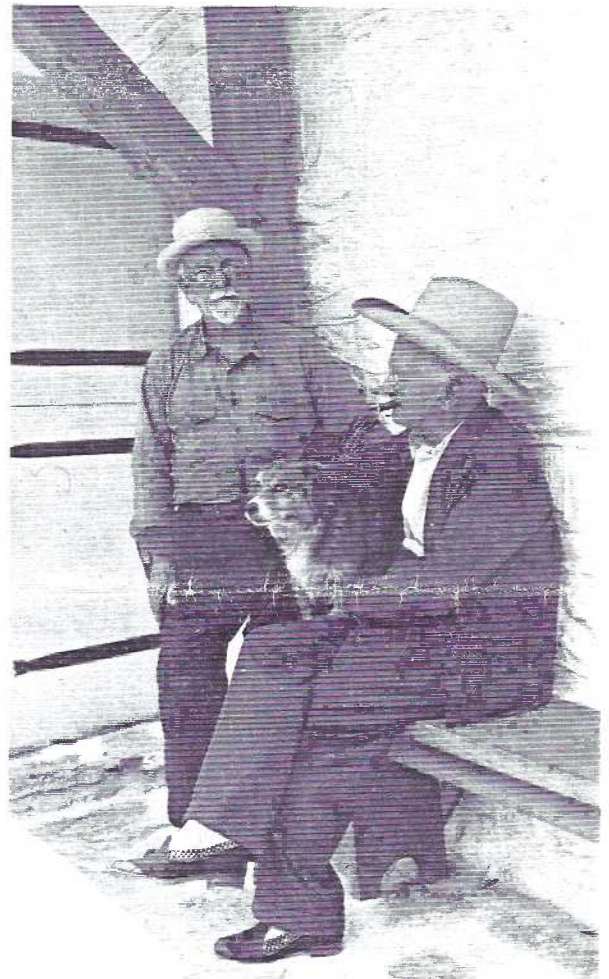
## PROGRAM

Please notice the June meeting is a PICNIC. It is SUNDAY this year (not Saturday as in the past few years). Ruth Moyer and Mary Ann Sherer are the Club's Food Committee for the picnic and will be serving barbecue. The Club will also provide beverages, plates and place settings. Members are asked to bring a covered dish (hot or cold) - casserole, salad or dessert and a serving utensil for same; also bring your own chairs.

## ACTIVITIES

Members are invited to bring cards to show, sell or trade; if you do, please bring your own card table and chairs. You're invited to arrive from 12 Noon. Food will be served at 1 pm followed by a very brief business meeting and exhibit boards. Each member is also asked to bring A CARD I'VE RECENTLY ADDING TO MY COLLECTION. Two minutes will be allotted to each speaker. If time allows, we'll have a second round for your second card.

Continued on page 8.



So you think YOU'RE a collector! Just wait until you've read about The Landis brothers (pgs. 2-5). Shown above on a 1945-50 Kodak RP card are Henry Kinzer Landis and George Diller Landis (seated with their dog). Would you need more than a barn to hold YOUR collection?

## PC BOOK WILL CONTAIN COLOR \$25 Maintained w/16 Pg. Section

At the May meeting the membership was shown an alternative bid by The Mack Printing Group, owner of Science Press, Ephrata. It included a signature of 16 pages, enough for approximately 48 post-cards in full color and will cost no more than several other bids without color. The Mack bid discussed at the April meeting with b/w views was low enough to reduce the selling price to \$25 with a pre-publication price of \$20. After a brief discussion in May, however, enough members felt the inclusion of a color section was well worth \$5 and with the reassurance of very short term scanning of members' cards, LCPC voted to go with the local concern. The folks at Science Press have a long history of quality workmanship. Examples of their Keepsake books were shown as typical work. A printing schedule will be arranged so the Lancaster Postcard Book will be available for distribution at our Expo in August 1998. Pre-publication will be \$25 and final price \$30. This will include 500 postcard views actual size or 95%. A tentative arrangement would include a chapter of City views and five County chapters: North West, North Central, North East, South West, South East and a center section of 16 pages including color examples from all of sections of the City and County. Each member's suggestions and participation are invited.

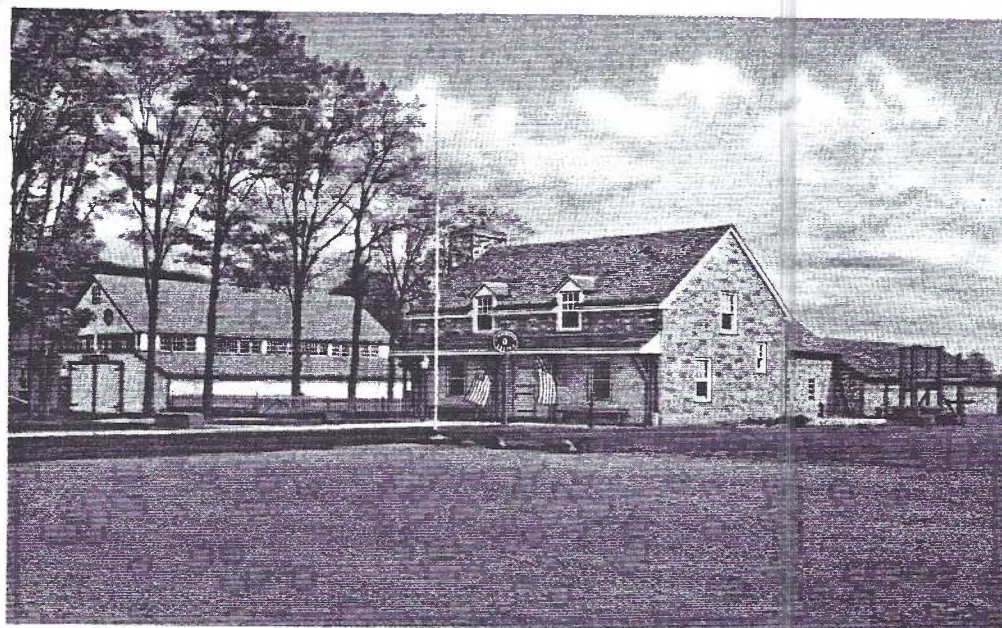


# PENNSYLVANIA FARM MUSEUM at LANDIS VALLEY

*"The future is often influenced by the past. By studying the relics of the past, one better understands the tendencies of the present. It is with these ideas in mind that we should view the Landis Valley collection. The Museum is not a university shop, but its collections represent the arts and crafts of a limited section. Historical societies deal with biographies, political history, local improvements, etc. Metropolitan museums revel in far-distant discoveries relating to ancient*

*peoples. Curio collectors feature freaks, art for art's sake, and such things as are glorified by the touch of once-famous men. Not so the Landis Valley Museum. Here we find tools, artifacts, implements, vehicles, things actually made and used by the early inhabitants, presented for study rather than entertainment. Although there is much to amaze and surprise the novices, study and research is preferred."* So spoke Henry K.Landis in The American-German Review,1941

This Art Colorstone by Curt Telch is #1B-H2341. Ike Steinfeldt, Lancaster's most prolific publisher, order 25,000 on Nov.17,1941 .No doubt his pre-war order was filled as this view appears most often in local collections.



Landis Valley Museum, Lancaster County, Pa.

1B-H2341

Henry Landis and his brother George were born in 1865 and 1867 respectively. The Lancaster County which was home for earlier generations of the Landis family had been very agricultural. In fact, Pennsylvania (including Lancaster County) was the largest food producing colony in America, creating an export trade comparable in economic terms to the tobacco trade of Virginia and Maryland.

But by the end of the Civil War, the farmer, carpenter, woodturner, blacksmith, glassmaker, gunsmith, wagon builder and wheelwright - all of whom found ample raw materials and a ready market in Lancaster County, had passed their peak of performance. Mechanization and Mass-production were the hallmarks of the Industrial Revolution.

Here were two brothers, both collectors at an early age of Indian relics, bird nests, minerals and fossils and both encouraged to study and collect by their parents. The seeds had been planted. But first there was Lehigh University for both. Almost unheard of in the days of rural families, the Landis parents (far from wealthy) provided for their boys who eventually graduated and became engineers, Henry in mining for Bethlehem Steel, and George in construction for the Great Northern Railway in the far Northwest.

By 1924 the boys had both returned to their beloved Lancaster County and, attending auctions with a fervor, amassed piece after piece after piece of local history - long before the word "antique" became commonplace in Lancaster. Fortunately for the two collectors, they had ample storage in the barns, and of course, when the barns filled, there were the fields.

As early as 1925 they were inviting the curious to see their treasures. Always on hand to teach and confer, Henry and George's "collection" became famous in a few short years. The brothers shared a broad spectrum of cultural interest, acquiring everything "local" from huge Conestoga wagons to hardware, firearms, kitchen utensils, quilts, homespuns, and finely executed Fraktur.

Advancing age and depletion of funds eventually led from **The Landis Valley Barn Museum** (1925-1940) to **The Landis Valley Museum, Inc.** (1941-1952) with the opening of the tavern, gun shop and two open exhibit sheds. Help in the form of a curator and extensive cataloguing followed and by 1953 the institution with national fame was deeded to the Commonwealth of Pennsylvania and became known as **The Pennsylvania Farm Museum at Landis Valley**.

ED NOTE: These names might help in dating your postcards, or at least, providing a general chronology.



Long-range plans included development of a farming community which would accurately portray rural life styles in Pennsylvania during the Colonial, Federal and Victorian periods. Through relocation of original buildings from elsewhere in the County and construction of additional ones, Landis Valley now offers us a village including a Print Shop, Harnessmaker's Shop, Gun Shop, Log Settler's Farm, the Yellow Barn, a Federal Farm, Blacksmith's Shop, the Landis Valley House Hotel, and the Maple Grove School House; a Country Store, the Landis Home, Firehouse, Tin Shop, Pottery Shop, Seamstress House (the old Erisman home); a Tavern, Conestoga Wagon Shed, Farm Implement Shed, Textile Gallery and Transportation Building as well as rural gardens.

Landis Valley Museum has some buildings open from November to April, Tuesday through Saturday, 9 to 5 and Sunday 12 to 5. From May through October all buildings are open including a fine museum store with a host of hand-crafted wares and books on antiques and history. Seasonal events and demonstrations take place from March to December. Details are available by calling 717-569-0401. Children are admitted free, Seniors at reduced rates.



#70819-B by Dexter for James Hess shows "craftsmen in early American costumes displaying their talents at the spinning wheels during June Craft Days".



Set of four PCs (reduced 30%) printed from original woodcuts, 1960, by Constantine Kermes: blacksmith, potter, cobbler and weaver "Exhibits of Arts and Crafts at PA. Farm Museum at Landis Valley".



## PENNSYLVANIA FARM MUSEUM of LANDIS VALLEY

### Check-list of Early Real Photo Views

The Garraway Company, Rutherford, N.J. produced a handsome series of b/w real photo postcards (no borders) for the Landis brothers. "Post Card" appears in an italic type similar to that shown. The first six cards are marked **Landis Valley Museum**, the final five **Landis Valley Museum, Inc., Lancaster, Pa.** (after 1941 - see story). No identification by caption or numbers appears so we'll attempt to differentiate the

#### FIRST SET

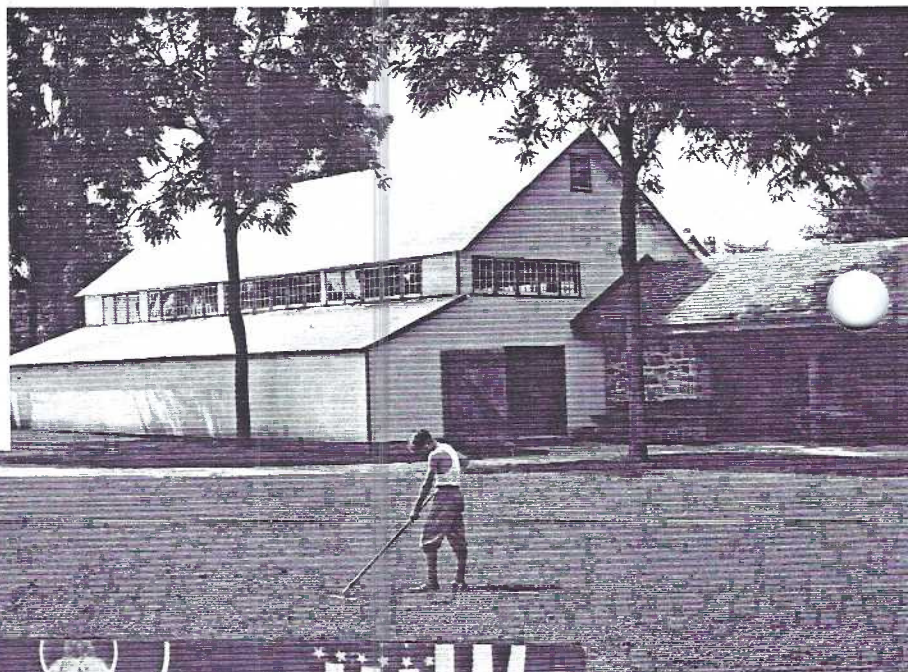
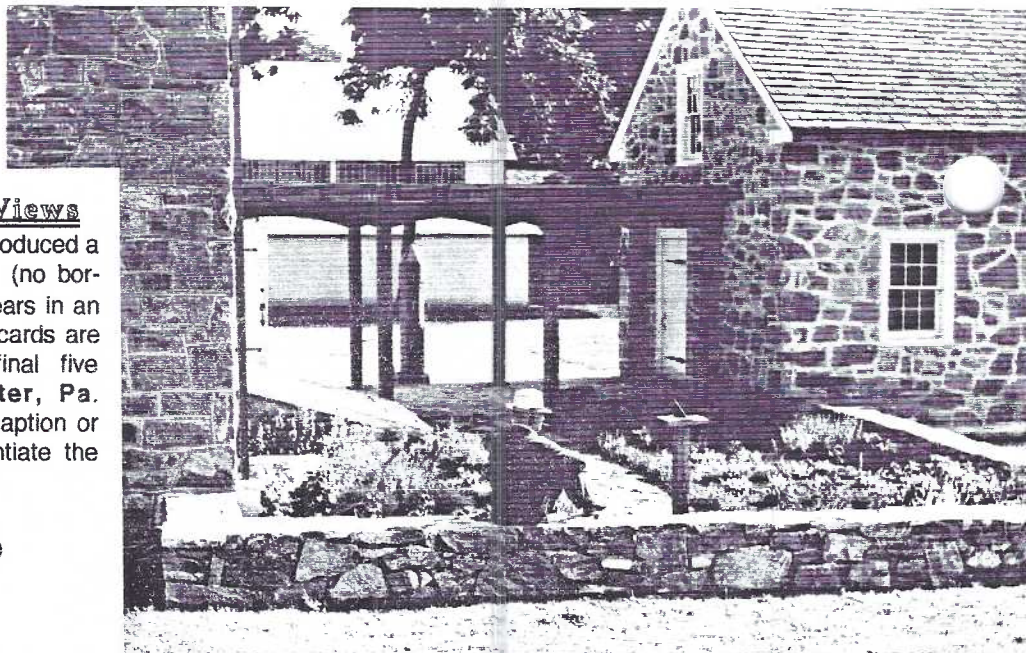
Tavern, porch and bake oven  
Tavern and Gun Shop across hay field  
George Landis near breezeway and sundial (Illustrated)  
Breezeway and wooden pump  
Rear of Implement Shed, wooden press  
Distant view of all buildings across corn field

#### SECOND SET

Tavern, porch and bake oven (repeat/above)  
Millstones outside Yellow Barn  
Yellow Barn, Implement Shed, boy raking (Illustrated)  
Yellow Barn interior (Illustrated)  
Picket gate near Yellow Barn

Six b/w real photos seen have white borders and the Eastman Kodak Co. stamp box (EKC - 1945-1950):  
Henry and Geo. Landis with dog (ONLY VERTICAL RP seen)\*  
Tavern and Gun Shop across hay field (repeat/above)  
Geo. Landis near breezeway and sundial (repeat/above)  
Implement Shed, rail fence and wagon  
Implement Shed, 3/4 view  
Implement Shed with Conestoga wagons, lady guide  
\*this PC has rubber stamp on reverse reading "LANDIS VALLEY MUSEUM/ H.K. LANDIS/ GEO. D. LANDIS/ LANCASTER 3/PA."

Two additional b/w RP cards, penciled "12/8/53" with a "POST CARD" of this type are winter scenes showing Landis Valley Hotel and crossroads and a red brick Grossmutter Haus (Grandmother house).



#### THE CARD

STAFF: Dot Fry, Gerald Hostetter, Jim Rudisill, Jean Frank  
EDITOR: Jim Ward ADDRESS CHANGES: Gwyn Fulmer  
CIRCULATION: Harold Fry. CORRESPONDENCE: See masthead.

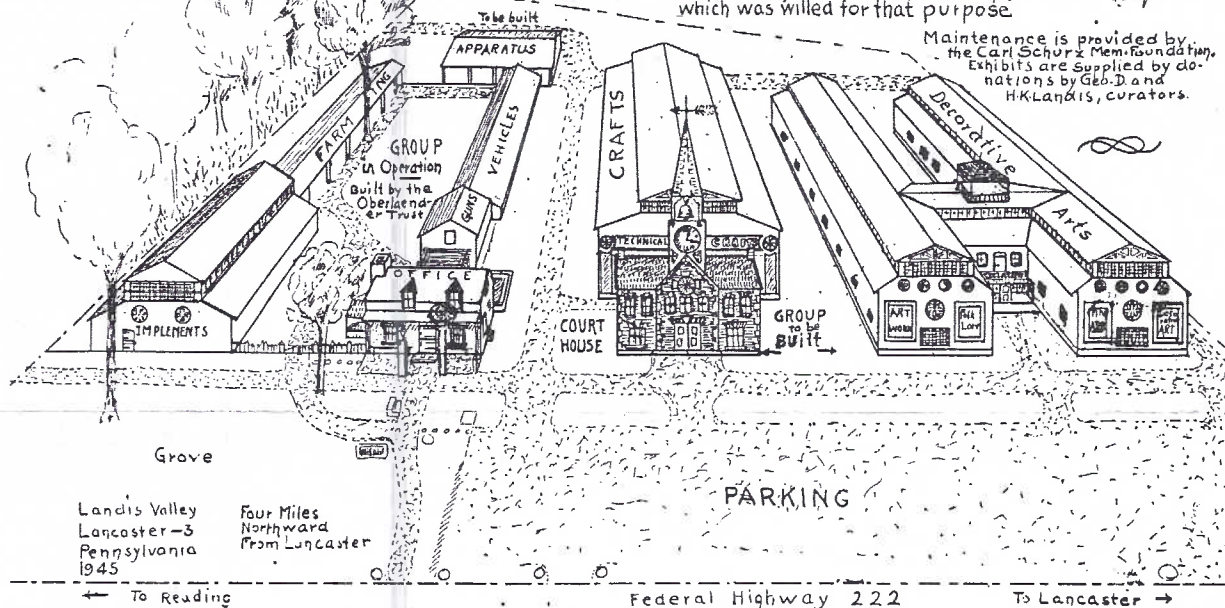


# PENNSYLVANIA FARM MUSEUM of LANDIS VALLEY

Collections total over 250,000 pieces  
Reference library over 30,000 volumes  
Represents Pennsylvania dutch culture

**LANDIS VALLEY MUSEUM**—bird's eye view as planned. The five buildings to the left are completed and in use. The shed to the rear will be for large apparatus and will cost about \$ 5000. The replica of the Court House could be built by the Garvin 25,000 Museum bequest. The Crafts building could be erected by the Wilson 50,000 Museum bequest. The Decorative Arts building could be completed for the 200,000 North bequest which was willed for that purpose.

Maintenance is provided by the Carl Schurz Mem. Foundation. Exhibits are supplied by donations by Geo. D. and H.K. Landis, curators.



The hand drawn PC above (enlarged) is a curiosity. It has no identified publisher or printer. The reverse has a red rubber stamp with a hand drawn sketch of Henry (diff. from the PC to the rt.) with the imprint "Henry K. Landis/Landis Valley/Lancaster, Pa.". It explains finished construction and intended buildings. An educated guess would date it pre-1953 when official recognition as well as financial help were sought from the Comm. of Pa. It's very likely the work of either of the Landis brothers. Only two specimens have been reported. Do YOU know of any?

The b/w life sketch of H. K. Landis by Walter Calvert, dated Aug. 16, 1948 is not scarce, nor is it common, especially with Henry's autograph. It's the only one we've found of Landis Valley Museum from the Conestoga Pub. Co. press of Lancaster. Reverse reads "MAILING CARD" and "Open All Day Every Day, Pa. Folk Lore and Antiques".

## CHECKLIST of LANDIS VALLEY MUSEUM POSTCARDS

In addition to the illustrated cards, these are known published postcards, all horizontal and full color -

### KOPPEL for Stel-Mar: folder of 12 views

LV1, 81676  
LV2, 81677  
LV3, 81678  
LV4, 81679  
LV6, 112935  
LV7, 112936  
LV8, 112937  
LV14, 112943  
LV17, 112946

Conestoga Wagon, no# for Jos. F. Morsello

### DEXTER for Jim Hess and Mel Horst

44568B  
44569B  
48787B  
70814B  
70815B  
70819B

### CROCKER for Stel-Mar

SM104

### TOMLIN for Mel Horst

16141  
28014

### ROBERTS ROYAL for Conestoga Crafts

CC26558 (only continental chrome on list)

Pa. Historical and Museum Commission also has a folder of perforated standard size views, no #s.



**H.K. Landis**  
CURATOR of LANDIS VALLEY MUSEUM  
*H.K. Landis*



BAKE OVEN  
PENNSYLVANIA FARM MUSEUM  
LANDIS VALLEY - LANCASTER, PA.



ONE ROOM SCHOOL  
PENNSYLVANIA FARM MUSEUM  
LANDIS VALLEY - LANCASTER, PA.



CROSSROADS HOTEL  
PENNSYLVANIA FARM MUSEUM  
LANDIS VALLEY - LANCASTER, PA.



TINSMITH HOUSE  
PENNSYLVANIA FARM MUSEUM  
LANDIS VALLEY - LANCASTER, PA.

The sketches below, signed "P. Weltmer", were available as PCs at the Museum Gift Shop on a recent trip and just 25¢ each. You might shop the Weaver Vane for more ideas.



# SHAD FISHING ONCE AGAIN

## Susquehanna Fish Ladders Successful

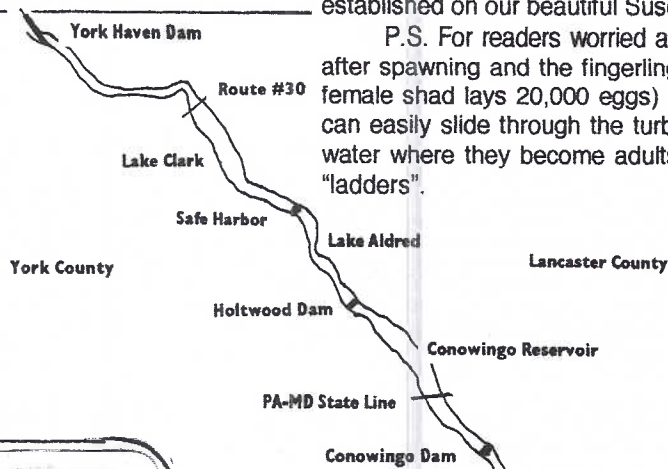


SOUVENIR POST CARD CO. NY

87—A Fishing Float on Susquehanna River

Once again we can thank **Newt Groff** for a timely postcard. The b/w view by Souvenir PC Co., N.Y. reads "A Fishing Float on Susquehanna River". The #87 indicates it must have been in a long series of fishing PCs. More importantly, it has an undivided back which means the photo was taken prior to March 1907. And so to our story...

The Lower Susquehanna River has four dams: York Haven, completed 1904; Holtwood, 1910; Conowingo, 1928 and Safe Harbor in 1930. Since US views earlier than 1904 are scarce it leads us to suppose the scene on the postcard was taken between 1904 and 1910 somewhere between Safe Harbor and York Haven. Can any member pinpoint the location?



Jack Hubley (Sunday News Outdoors Editor par excellent) recapped the History of Susquehanna Shad quite nicely on May 11. Briefly (if you've already recycled the paper) shad fisherman lost a sport and an industry as the dams began appearing between Lancaster and York Counties. The Conowingo Dam kept the shad entirely from Pennsylvania.

The Conowingo, however, redeemed itself in 1972 with a fish ladder (lift) on the York shore. By 1991 a second, improved "ladder" was in place on the Lanc. side. That type lift (an elevator actually hoists the fish in a gigantic bucket) was completed this Spring at both Holtwood and Safe Harbor and shad can now spawn as far north as York Haven Dam where a final lift will be in place by the year 2000.

Perhaps a local entrepreneur will issue a set of color chromes showing a once-thriving industry and sport re-established on our beautiful Susquehanna River.

P.S. For readers worried about the shad - most die after spawning and the fingerlings? the zillions (a single female shad lays 20,000 eggs) if not eaten by the bass can easily slide through the turbines on their trip to salt water where they become adults and head back up the "ladders".

## BOOK BOOSTERS

At this writing (May 21) these 19 members have handed in pledges to loan the Club \$500 or more when needed for the printing of the postcard book:

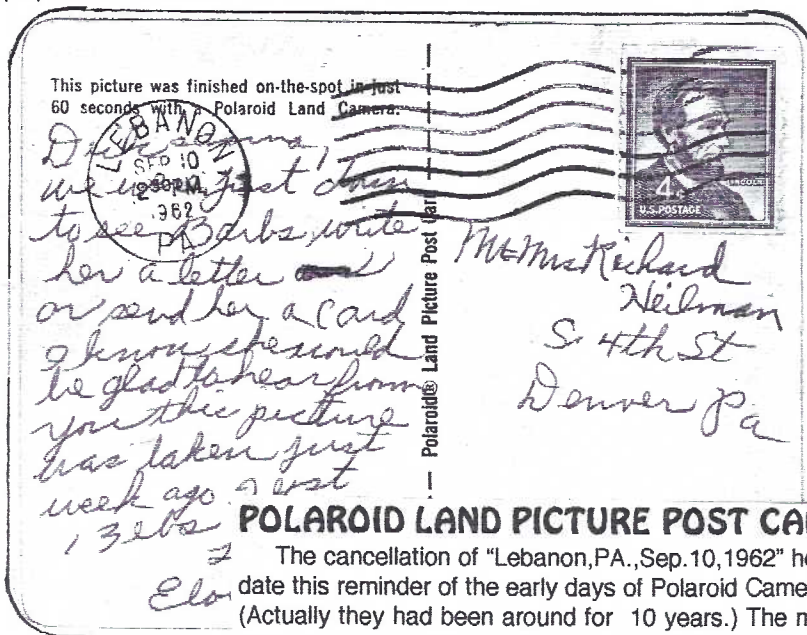
Dick Bishop, Ray and Carol Dennis,  
Susan Glass, Bill and Mary Ann Guntow  
Polly Curtis, Kit and Bud Prowell  
Gerald Hostetter, Jim Ward  
John Long, Walter and Barb Mowrer  
Jose Rodriguez, Bernie Heisey  
Anne and Howard Steinberg, Merv Wenger.

The Morlatton Postcard Club

Their pledges total \$15,000 and for their faith in this - LCPC's biggest project - we are most grateful for their confidence.

A third of the money will be needed next Spring when the copy is presented to the printer, another third upon completion of the proofs and the final third on delivery just prior to our August 1998 Expo.

Won't you consider adding your name to this growing list? The expected cost, including advertising, will be approximately \$32,000, so you see, we're nearly half way to our goal but YOU can make a difference. Send in your blue voucher and check off the TENTATIVE number of books you hope to buy and remember, for each \$500 loaned, you receive ONE FREE BOOK!



## POLAROID LAND PICTURE POST CARD

The cancellation of "Lebanon, PA., Sep. 10, 1962" helps date this reminder of the early days of Polaroid Cameras. (Actually they had been around for 10 years.) The message on the miniature postcard reads "Dick & Anna, We were just down to see Barbs, write her a letter or send her a card I know she would be glad to hear from you this picture was taken just last week ago I lost 13 lbs. Love, Eloise". It was mailed to Mr. & Mrs. Richard Heilman, S. 4th St., Denver, Pa. Good for you, Eloise - 13 lbs! Now brush up on your punctuation.



## THE STORY OF OLD GLORY

June 14th, 1917, is the 140th birthday anniversary of the American Flag. June 14th is known and annually observed as Flag Day all over the United States of America.

Figure 1.—The coat of arms of George Washington, with its stars and stripes, probably influenced the design of our Flag. Its Latin motto means "The event justifies the deed."

Figure 2.—The first official National Flag raised by General Washington at Cambridge, Mass., January 2nd, 1776. The king's colors are in the canton and 13 stripes represent the 13 original states. An ensign used in colonial trade as early as 1704.

Figure 3.—General Washington designed and Mrs. Betsy Ross made the first Stars and Stripes at Philadelphia, in 1777. Congress adopted this as the American Flag on June 14th, 1777. It was first raised over Fort Schuyler (present Rome, N.Y.) August 2nd, 1777 during unsuccessful siege by a British Army. The Fort Schuyler flag was "home made" of "a petticoat red, a soldier's shirt and a captain's cloak of blue."

Figure 4.—The Flag of fifteen stars and stripes adopted in 1794 after Vermont and Kentucky were admitted. This is the "Star Spangled Banner" which inspired Key's immortal lines, when he saw it "still there" over Fort McHenry which defended Baltimore from British attack in 1814.

Figure 5.—"Old Glory"—our present American Flag—the style adopted by Congress in 1818—13 stripes for the 13 original states and one star for each state—48 in 1917.

The American Flag is the oldest of those of the great nations and only the flags of Denmark and Holland are older.

## IN DAYS OF OLD WHEN IT WAS PATRIOTIC TO WAVE A FLAG AND NOT BURN IT

this postcard was published and distributed free by the United Cigar Stores Co. In those same Days of Old smoking a cigar was a sign of opulence! In spite of this and that, we show for Flag Day (June 14) this teaching PC, which dates itself and our readers with the 48-star flag as the most recent. Its reverse places it easily in the category Unusual Backs.

Do you know which state for #49? Alaska or Hawaii? And what year were #49 and #50 admitted to the Union?

## EXPO EXHIBITS

It's that time of the year. We've spent this Winter with our postcards - filing new ones and refiling old ones and now the annual Let's-Show-'Em-What-We-Have event = the August Expo.

Exhibit Chairpersons are Barb Mowrer and Earl Carver, both veteran exhibitors from the early days of LCPC. They've chosen five categories that offer good variety and opportunity for both the beginner and experienced collector.

Our club's Expo exhibits boards are anticipated by hundreds of Show visitors each year. We devote more exhibit space and committee hours to exhibits than any show in the area. Our postcard awards are unique and prized by the recipients. Attentive dealers are chosen as judges.

Even though you need not include your title in the entry form, get busy NOW, choose your categories and submit the form to Barb or Earl.

## LANCASTER COUNTY POSTCARD EXPO 1997

### Exhibit Rules, Categories and Awards

1. All LCPC members may enter one (1) board per category
2. Postcards must be mounted on poster board, 22"x28", vertically oriented
3. Exhibitor's name and category must be placed on the back of each board.
4. Five Categories: **HOLIDAYS** **FLAGS**  
**REAL PHOTOS** **ANIMALS**  
**POSTAL RELATED**
5. Awards: 1st Place, 2nd Place, 3rd Place in each category  
Best of Show (chosen from 1st Place exhibits)  
Peoples/Popular Choice (voted on by Show visitors)
6. Judging based on: Postcard Information 1/3  
Presentation and Originality 1/3  
Condition, Completeness, Rarity 1/3
7. All boards must be delivered to the Exhibit Committee before the Show or at The Farm & Home Center between 7:00 and 8:00 A.M., August 16 and removed after Peoples Choice Award has been presented (between 5:30 and 6 P.M).
8. Deadline for submission of entry form: **July 31.**

### THIS IS THE ONLY ENTRY FORM YOU WILL RECEIVE.

You may submit a copy if you wish to keep THE CARD intact. Mail to either:

**Barb Mowrer**, 786 Kames Hill Rd., Columbia, PA., 17512 or

**Earl Carver**, 212 Pheasant Dr., Columbia, PA., 17512

I will enter a board in the following categories: \_\_\_\_\_

EXHIBITOR'S NAME

ONE  
CENT  
STAMP  
HERE

PRIVATE MAILING CARD

Flag Day Post Card Souvenir.

Compliments of the United Cigar Stores Company.



## NEW MEMBERS

#456 Robert I. Clay 6816 Rowe Lane, Harrisburg, PA., 17112-2754. Collects real photo and early PCs of Harrisburg and will pay postage both ways for approvals. He heard about us through "the Club's ad posted on the Internet". Welcome, Robert.

\*Well, that's a plus for the Internet, but on the other side of the coin is a rumor your editor heard that an entire copy of THE CARD was posted on the Internet. This seems totally unfair to the membership that pays dues/subscription for THE CARD. Comments welcomed.



## FUTURE SHOWS

**Ft. Washington, PA.** June 20-21. Don Skillman's PC Show. Expo Center, exit 26. PA T-pike. 10-7, 9-5. \$2 adm.

**York, PA.** June 27-28. York PC Club's 7th Show. Aldersgate Church, Tyler Run Rd., 10-6, 9-4. \$1.50 adm.

**Ft. Washington, PA.** July 19-20. Great Eastern Summer Antique Book, Paper Show. Expo Center, exit 26 PA Turnpike. 10-5, 10-3. \$5 adm. with ad.

## May's WHEREZIT?

Howard Steinberg and the rest of us who have that Artvue postcard of Big Maples Farm can thank Bill Buckwalter and Charlie Groff for the location. Check out Letort Road just beyond the Millersville Borough line. While you're out there, say "Hi" to Ed Harris who probably knew where it was, too.

Continued from page 1.

There will be a meeting of the BOOK COMMITTEE during the afternoon as well. Everyone is invited to participate.

## MORE LOCAL CARDS NEEDED

And everyone, please bring more local postcards to be copied onto the Work Sheets. NOTE: Please don't think your cards aren't needed. One goal of the Committee is to have as many members represented on a donor list as possible. EACH MEMBER'S NAME WILL BE LISTED WITHOUT THE NUMBER OF CARDS USED. So bring in your cards. Since the May and June meetings had different locations, the deadline for submitting cards has been extended to July 31. If you can't make a meeting, send extra-fine copies on duplicate Work Sheets - front of the PC on the top half of the Work Sheet and the reverse of the PC on the back of the Work Sheet.

## DIRECTIONS

Find your way to Route #322. At Brickerville, turn east, take road to Hopeland and Middle Creek Wildlife Management Area. From Ephrata, take road north at Clay to Hopeland, also follow MCWMA signs. From Lebanon County, turn south on #897 at Kleinfeltersville Rd. on to Hopeland Rd., through MCWMA. #1795 Kleinfeltersville Rd. is 2 mi. north of PA Turnpike and first drive south of MCWMA lake.

## NO SMOKING

Sorry, smokers, but you're NOT invited to the June picnic. I don't want smoking inside or outside. THAT'S IT- NO EXCEPTIONS! Signed, JIM WARD (So, sue me!)



## EXHIBIT WINNERS



A piddlin' 40 people showed up for the May meeting... the smallest attendance since anyone can remember. Were the rest afraid to tackle Route #30 construction?...or couldn't they read maps for the temporary location? (they'll never find June's meeting venue) or perhaps they were just taking advantage of the first 70 degree day since March.

## NEW FORMAT

Those who attended became part of a new exhibit format for LCPC. The exhibitors were invited to describe/explain their boards before the voting. The extra time devoted to the boards (in this writer's judgment) was well worth it. In the past there have been interesting, even outstanding cards, that never received proper recognition. So much can be learned by all of us and isn't educating ourselves important if we represent the postcard collectors of Lancaster who, in turn, are asked questions about cards by others? Too bad we didn't start sooner.

The members then voted for the board, of course, not the exhibitor (give us credit for being mature). The random subjects began with the letter "M".

Ray Bubb*	FIRST	Military Tour of Duty
Earl Carver	SECOND	Music Makers
Harold Moyer	THIRD	Many Moons

## HONORABLE MENTIONS

Polly Curtis	"M" Could Be Maps
Don Davis	M & M's
Ruth Frankhouser	Moon Beams
Mary Ann Guntow	Main Street, Brookville, PA.
Ruth Moyer	Mothers Day
Jim Ward	Local "M" Towns
Norman Zimmerman	Motels etc.

\*This was only Ray's second time at exhibiting - way to go, Ray! Also, it was Mary Ann's first attempt. 'Nice to see Polly join the "regulars", too!

On tap for June are BEVERAGE boards. Single FLAGS will fly in July and single SUMMER RECREATION for August, giving the Expo exhibitors time to work on their annual efforts (Expo application elsewhere in this issue).

## CLUB TREASURY BALANCE

It's been a concern to some members that LCPC's treasury balance is growing and where will the money be used? The universal sentiment is that a lion's share beyond normal operating expenses be applied to the costs involved in printing the book of local postcards. A more reasonable use would be difficult to find. After all, a primary reason for creating our Club was to assemble and disseminate information about postcards, including local history and the Postcard Book will do just that!

And, should a profit from the Book ultimately add to the Treasury? Let's cross that bridge when we get to it, but your ideas are welcomed...postcard reference books to local libraries?...the view book to libraries in local retirement homes?...a donation to the Curt Teich Postcard Museum?... occasional color in THE CARD?

## JULY AUCTION

Bring your auction lots to the June meeting or see that Norman Zimmerman has them before that date so they maybe listed in the July issue of THE CARD.