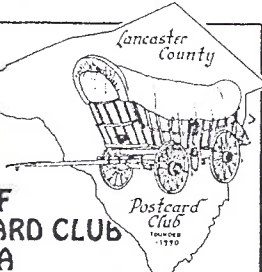


# The Card

MONTHLY PUBLICATION OF  
THE LANCASTER COUNTY POSTCARD CLUB  
LANCASTER, PENNSYLVANIA



Meets 3rd Monday  
Farm & Home Center  
Routes 30 and 72  
Lancaster, Pa.

Feb. 1998 Vol. 9, No. 2 #98

NEXT MEETING

February 16, 1998 7:30 pm

Buy, sell, trade from 6 pm

Yearly membership is \$8 (\$2 extra for each member at same address). Membership year is April 1 to March 31. Make check payable to: LCPC, c/o Dorothy Fry, 1050 Kleinfeltersville Rd., Stevens, PA., 17578. Advertisements are: \$15 full page, \$8 1/2 pg., \$5 1/4 pg., prepaid with copy. Classified ads are FREE to members, but please submit your ad for each issue. Send all ads, correspondence and change of address to Jim Ward, editor, 1795 Kleinfeltersville Rd., Stevens, PA. 17578-9773, phone 717-721-9273. **THE CARD** staff includes Dorothy Fry and Carol Dennis, proof readers and Gerald Hostetter. Harold and Ruth Moyer handle the mailings. Recent circulation averaged 229 homes and 14 postcard clubs with whom we exchange.

## PROGRAM

We're fortunate to have a diversified membership and it includes more than a few veterans of World War II. Our hats are off to these men and women for the valor they showed in protecting us.

One of these members is Ray Bubbs. In addition to being a avid fisherman and birder (his wife, Shirley, is serving her 4th year as the Lancaster Bird Club's President) Ray has more than a passing interest in postcards.

Ray did extensive research for our Mount Johnson Island Eagle Sanctuary article (March 1995). He has also sought out cards that chronicled the three action-packed years he spent in World War II. It's these 50+ cards mounted on three display boards that will be his subject for our February program.

Graduating from high school, Jan. 21, 1943, it was only six days later that Ray was inducted into the U.S. Army. There was a war on - time was of the essence and every able-bodied young man was needed. He went through basic training and arrived in India, one sector of the CBI (China-Burma-India theater of operations).

His unit, the 502nd Combat Military Police Battalion, soon found its way into Burma where it served in an operation with the famed Merrill's Marauders.

Those who attended the January meeting at the new location were served by Ruth and Harold Moyer with a grand cake embellished with our logo along with coffee, tea and cocoa - a fine spread for our eighth anniversary.

These members participated in the program with a card that represented **WINTER** to them:

**Bill Buckwalter** - Snow, Broadway, Los Angeles, 1944

**Bill Buckwalter** - A 1911 April snow

**Earl Carver** - Dedicated parishioners attend church

**Bob Kramer** - The 1938 Niagara Falls bridge

**Mary Darrenkamp** - An Amish horse and sleigh

**Gwyn Fulmer** - Bird feeder 4" instead of 4' above snow

**Gerald Hostetter** - Blue scene, 1912 Mt. Gretna snow

**Mike Middleton** - Holly girl in snow

**Harold Moyer** - Snow lady and rascals

**Jim Ward** - Daschund relieves on snowman

**Janice Weitzel** - "Laughing in the cold" (A horse)

By popular vote, **Earl Carver** won the \$5 prize.

Speaking of prizes, we gave three FREE door prizes in January to: **John Long** (pc pages), **Harry Lines** (post-cards) and **Ruth Frankhouser** (pc sleeves).

**Harold Fry** won the 50/50.



Our February speaker, Raymond (Ray) H. Bubbs, Jr. takes time out during leave in Ledo, India for a postcard photo. A passing native added atmosphere to an otherwise lackluster studio backdrop.

Make this program a "must" and learn history from one who helped make it. Join us in Ray's three year trek culminating with his discharge at Indiantown Gap on December 10, 1945. Live history at our February meeting.

## EXHIBIT BOARDS

Possibly it was the threat of bad weather, but we had only 57 attend in January and misinformation resulted in only three boards by three of our "regulars".

<b>RUTH MOYER</b>	FIRST	Winter Fun
<b>JIM WARD</b>	SECOND	Snow Folks
<b>HAROLD MOYER</b>	THIRD	I Have A Dream

Future topics:

February (board) CUPIDS

March (single card) SPRING

April (board) THE LETTER "A"

May (board) POTPOURRI

## FUTURE SHOWS

March 7 **Belmar, NJ**. Taylor Pavilion. 9 to 4. Free adm.

March 27-28 **Lancaster, PA**. Farm & Home Center. 10 to 6, 10 to 5. \$1.25 with card (enclosed).

April 3-2 **Havre de Grace, MD**. Police Community Center. 10 to 6, 10 to 4. \$3 adm.

# TIGERS

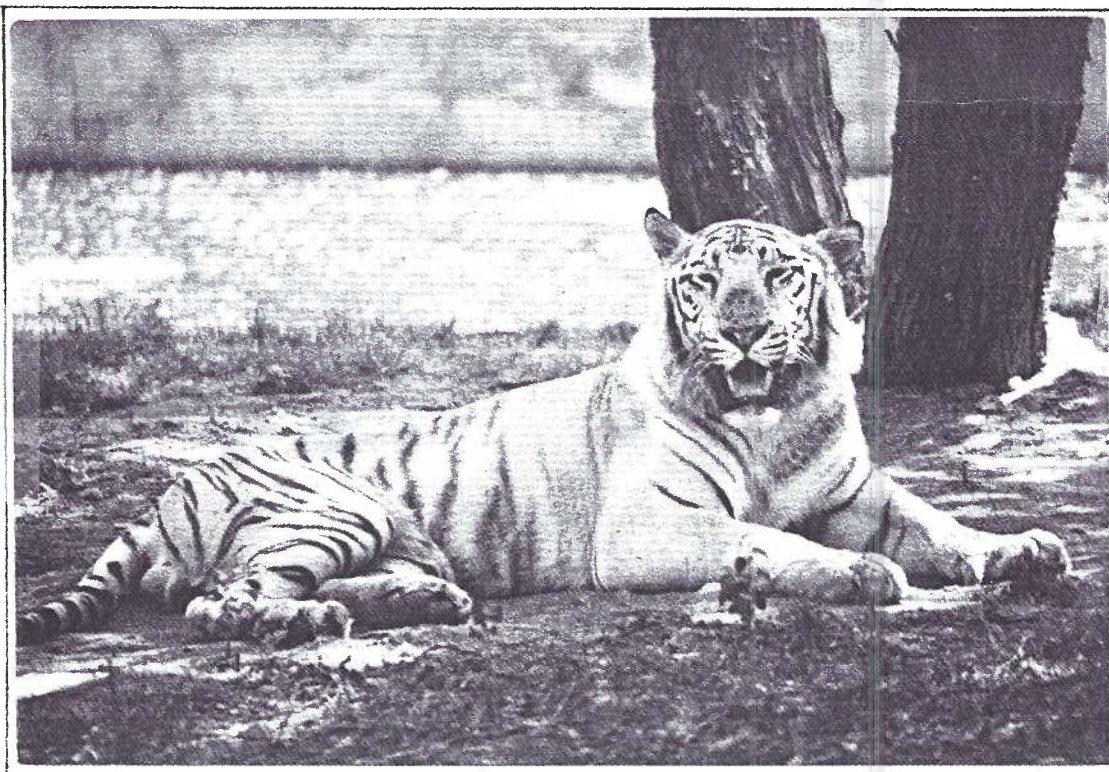
1998 is the Year of the Tiger for the Chinese but you can be sure there'll be plenty of tigers on the American scene if Madison Ave. advertisers can generate a few billion dollars with the theme.

Fortunately for postcard collectors, our tigers are already there for the picking. Tigers have been popular for ages (ask the Chinese) and so it's easy to find them on all eras of postcards - from Golden Age to Continental Chromes. The CC we show (WL012) is a white tiger in the new Dehli Zoo and was produced by the India Tourism Development Corp. Ltd. Tigers are popular subjects in most zoo series incl. linens, white borders, etc.

Of course, there is Tony the Tiger. Look for him on a Kellogg's cereal chrome. A set of eight, **Sambo's Picture Story Cards**, was issued by Sambo's Restaurants "pleasant family dining from coast to coast" back in the 1960's. It wasn't too many years later that Sambo's suffered from politically incorrect pressure and changed its name (no more associating "Sambo" with a black child

I found one in the set addressed to John Reno in Hagerstown, MD. Grandfather and grandmother wrote "Have you ever seen a tiger? This one, on the card, was a funny one. He wanted to wear Sambo's clothes." (See illustrations.)

The idea behind the story on the eight cards was very innocent. If it reeked of anything, it was mild commercialism - nothing ethnically derogatory. See for yourself. **Continued on the next page.**



© Gerry Ellis



World Wildlife Fund  
1250 Twenty-Fourth St., N.W.  
Washington, D.C. 20037

## BENGAL TIGER

(*Panthera tigris tigris*).

Once roamed widely  
across India and  
Southeast Asia. Now  
threatened by poachers.  
Needs protection.

The World Wildlife Fund issued this magnificent Bengal a few years ago as an incentive to contribute.

### TIGERS ON POSTCARDS

Tigers are most easily found on PCs issued by zoos. They exist on cards of all eras - from golden age to chromes. We've "found" them at the:  
Atlanta's Municipal Zoo  
Cincinnati Ohio's Zoo  
Detroit's Zoological Park  
London's Zoological Garden  
New York City's Zoological Park  
The Jardin des Plantes in Paris  
Philadelphia's Zoological Gardens  
St. Louis, Missouri's Forest Park Zoo  
San Francisco Zoo  
National Zoological Park, Wash., DC  
and Ringling Brothers' Winter Quarters at Sarasota, Florida. They most certainly are found on dozens more.



1) Little Sambo walks through the jungle wearing the new clothes that his parents have given him.



2) Sambo meets a tiger in the jungle. The tiger demands Sambo's little red jacket.



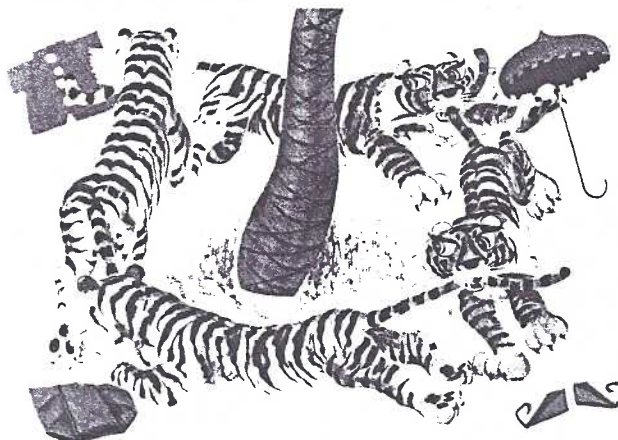
3) The tiger smiles as he walks off in Sambo's new blue pants.



4) Sambo is forced to part with his pretty purple shoes. The tiger wears them on his ears.



5) Sambo gives his beautiful green umbrella to this mean looking tiger.



6) The tigers are jealous of one another and race around the tree as they fight for Sambo's clothes.



7) Sambo got all his clothes back and ran home to fill up on stacks of pancakes.

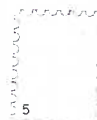
8) This card repeats the story told on cards #1 to #7 ending with Then they all went to a Sambo's Restaurant where each tiger ate seventy-five pancakes...but Sambo ate a hundred and sixty-nine because he was so-o-o-o-o-o-o-o-o-o-o hungry.

Sambo's offered the set in an open-window pack, for, no doubt less than \$1. Because of the "politically incorrect implications" some dealers are now gouging collectors as much as \$50 for the set. (For its age and advertising value, \$5 would be far more reasonable.)

Illus. are printed in primary colors, the reverse in red.



POST  
CARD



# Royal Castle Neuschwanstein

"How's this for a summer cottage? We have a car rental and are having fun getting lost and found..." This is a message posted in Rudesheim, Germany, Oct. 24, 1985 to a family in Lancaster, Pa. (It was received Dec. 16!) The postcard, a multi view, had eight views of Königsschloss Neuschwanstein and Hohenschwangau and one of King Ludwig II.

Hohenschwangau, a jewel of Germanic romanticism, had its most important epoch shortly after its construction in the 12th century. The builders and lords of the castle were Knights of Schwangau. By the 16th century the castle was exposed to ruin. It suffered heavy damage during the Napoleonic Wars in 1800 and 1809. Because of its excellent location, the ruin was purchased by Crown Prince Maximilian, later King Maximilian II and father of King Ludwig II. It was restored from 1832 to 1836.

Ludwig was born in the castle Nymphenburg in Munich on August 25, 1845. His father died in 1864 and young Ludwig at age 19, still involved in his formal education, was forced unto the Bavarian throne. Within three years he was engaged to Princess Sophie, a sister to the Austrian empress Elizabeth. Less than a year later, the engagement was broken. Ludwig II remained alone until his death. He spent most of his time at Hohenschwangau

A black and white photogravure PC by Martin Herpich & Son, Munich, shows Neuschwanstein castle in the foreground and Hohenschwangau to the right of center.

Hotels in the tiny village beyond Neuschwanstein offer tourist accommodations. Eleven of the sixteen exterior views we've seen show this front entrance to the castle.

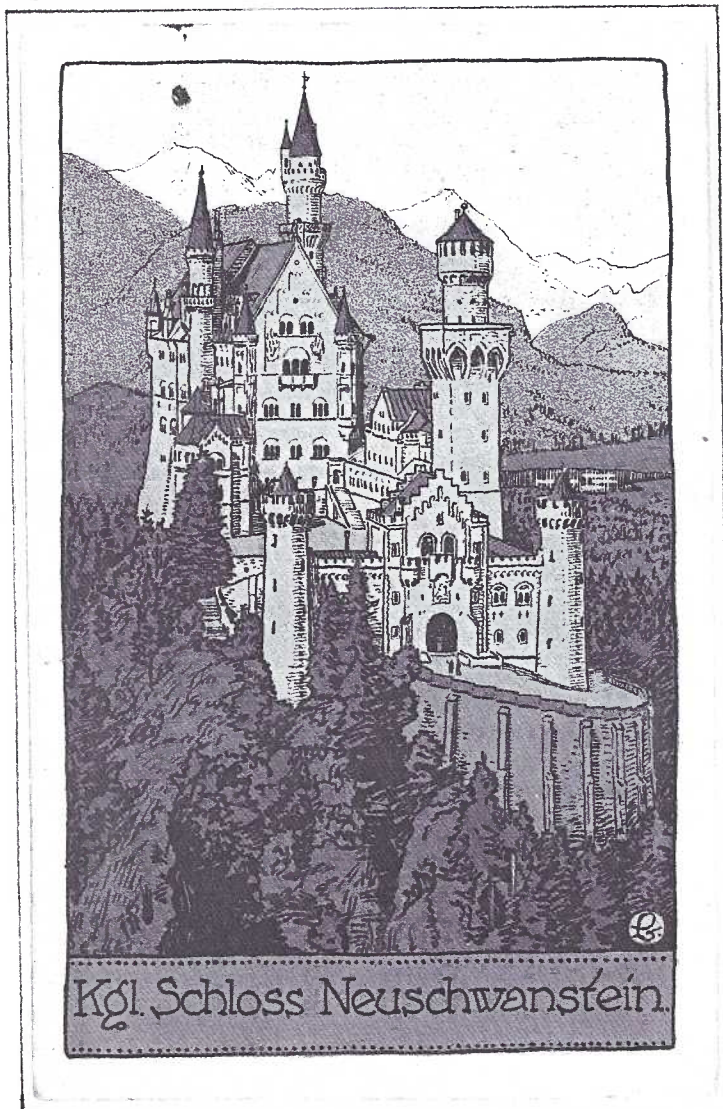


and it is to this castle that composer Richard Wagner was frequently invited as a guest.

During his reign King Ludwig II worked for reconciliation between Germany's two great powers, Prussia and Austria. He was a true German patriot, resisting the overtures of Napoleon III for a Franco-Austrian-Bavarian alliance. On the initiative of Bismarck, Ludwig tried his best to unify the German princes into an empire.

Finally tiring of a lack of progress in building the empire as well as constant demands to strengthen the church, he retired from public life and devoted his remaining years to the building of castles Herrenchiemsee, Linderhof and Neuschwanstein.

This unusual print (left) is colored in tones of browns, tans and rust. It was mailed in 1971. The fairy tale castle of Neuschwanstein (replicated at both Disney Land and Disney World) is just one of dozens of romantic castles that line the beautiful Rhine River as it flows north from the Bavarian Alps.



The royal recluse was declared insane by a group of doctors enlisted by his uncle Prince Luitpold who immediately became regent. King Ludwig II drowned himself three days later in the Starnberger See (lake) at Schloss Berg. Mostly because of these latter facts, many historians label him Mad King Ludwig.

I ask you - given huge political responsibilities at a young age; a misdirected engagement; warring factions among your friends and neighbors and immense wealth and land, might not you have chosen the same path taken by Ludwig? Would they call you "mad" as well?



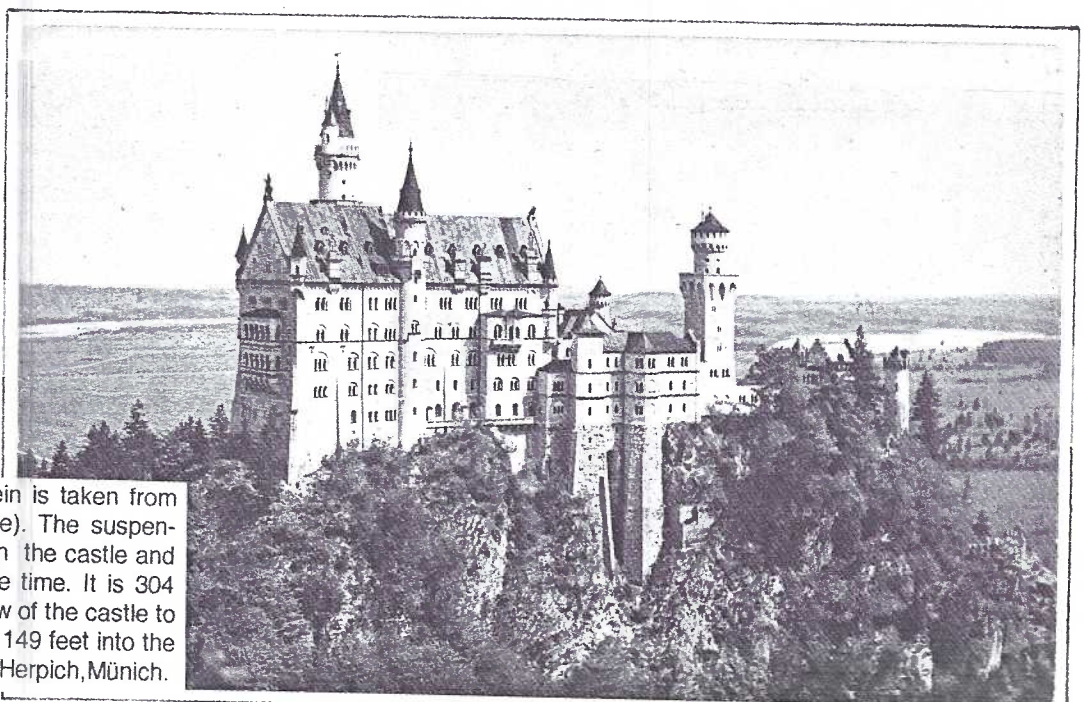
Kgl. Schloss Neuschwanstein: Speisezimmer.

Dining room at Neuschwanstein. The kitchen was three stories below. Meals came up by food-lift. Tourists generally include Ludwig's castles in their Bavarian tours since they lie in close proximity to Oberammergau to the east, Innsbruck to the south and the tiny principality of Liechtenstein to the west. Undivided back card.



*König Ludwig II. v. Bayern als Georgritter*

King Ludwig II of Bavaria wearing the Order of St. George. The 1930's PC is also by M. Herpich of Munich.



This southern view of Neuschwanstein is taken from the Marienbrücke (Queen Mary's Bridge). The suspension bridge, erected in 1866, is older than the castle and was a technological masterpiece at the time. It is 304 feet high and provides a magnificent view of the castle to the south and the Poellat Falls that drop 149 feet into the gorge to the north side. #754 by Martin Herpich, Munich.

## Lancaster Lovers

To have a fun time in February, we needn't go farther than Local Lovers.

Generic postcards of your hometown may be right up front or they may bring up the rear of the pack. If you've accumulated (does anyone really look for these?) enough, you've probably subdivided them - one division being Local Lovers. *These are posed photo postcards.*

So for our February lovers we'll turn loose what we've seen and offer you a refreshing look at the way Romance used to be and, at the same time, provide you with the genesis of a checklist of Local Lovers.

**Editor's note:** with no shame, Gerald and I remind you that each of us, with separate collections, would be delighted to listen to your price for any Local Lovers you have that aren't listed herein. Bring them along to the Feb. meeting or send copies to us.

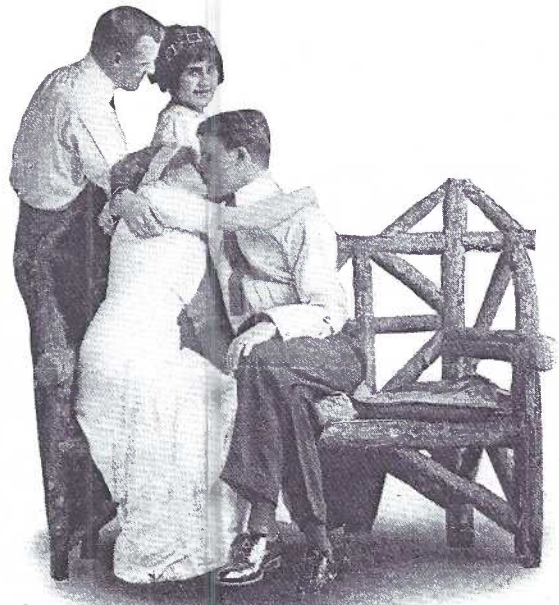
These are what we've seen. What can you add?

EVER OF THEE  
I AM FONDLY DREAMING



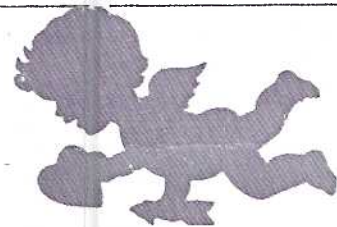
IN LANACASTER, PA.

From Washington Boro, May 11, 1917, to Miss Elizabeth Sterneman, also of Washington Boro, "This is you and me. (Guess)." A Bamforth card, unidentified series. Note misspelling of Lancaster.



Oh! how I love it  
in Lancaster, Pa.

No message on this Taylor Platt postcard from "Guess". She evidently decided the picture told her story. Postmarked from Lancaster, Pa., June 17, 1912 and sent to Mr. T.H.Ness, 323 N. Mulberry St. in town.



### Anglo-American PC CO.

Came near putting my foot in...  
Lancaster Pa. is a dead old place but I should worry.  
Looking things over in...  
They hate to see you come away from...

### Auburn Postcard Co,

Greetings from the old home town, Lancaster, Pa., USA  
**Bamforth Local Lovers:** "In Lancaster, Pa." along lower edge  
Come tell me something...  
I'd like to call you mine...  
I'll be glad to meet you again...  
I'm always on the waterways in...  
I'm making a special study of you...  
I'm making good...

Time passes quickly here...

We are happily situated...

With all my love...

You are the best...

You need someone to push you along...

**Bamforth Lovers:** "Lancaster Pa." in red pennant at top

All I need that I want is you in...Lancaster, Pa.

I can forget my trouble in...

Me for a good time in...

You are all I want in...

You don't need to see me again in...



**United Art Publishing Co.**

Going a-milking in...

Haying in...

**Unidentified Publisher** (caption in green band at lower edge)

Always glad to see you in...

Holding my own in...

How they treated me here in...

I met a friend in...

Pleased to meet you in...

The sweetest girls live here in...

Waiting for you in...(girl lies at tree)

Waiting for you in...(standing girl w/hands to shoulders)

**Unidentified publisher (Illustrated PC Co.?)**

(caption overprint at top of view)

Holding down the law in...

I am stuck in...

Neighborly love in...

A picture of how I feel in

**LANCASTER, PA.**



Miss Elsie Dull, RD 5, Quarryville, Pa. received this card mailed from her own town in December (year illegible). The descriptive message reads "Dear Friend, I rec'd. your letter & would of wrote you a letter but indeed, Elsie, we are very busy stripping tobacco and I want to finish what we have down & then this afternoon I want to go to visit Mary Mc. School what you have to tell me. Don't leave it slip your mind till Sat. eve. I can tell you better when I see you about the party coming up from Marcticville. He was in Lanc. on Thurs. Maybe you seen him. From E.E.R. I seen several people in Quarry. last Sat. eve. you knew. Sorry you were not there to see them. Ha, ha." A Bamforth card

**Misc. Bamforth**

A picture of how I feel in...

Ever of thee I am fondly dreaming in Lanacaster(sic)

I am taking things easy in Lanacaster(sic)

I juts want you...

I am waiting for a kiss in...

They take some getting in...

Why don't you come live in...best place on earth.

**Danzinger & Berman**

Plenty of auto riding in...

**Taylor Platt & Co. Series 803**

Awaiting your favorable reply, I remain...

This is the right move in...

Two is company in...

We have "the Hypnotist" here in...

Won't you join us in...

**Taylor Platt & Co. Series 861**

Don't disturb us in...

Oh! how I love it in...

Please let me in...

**Tichenor Bros. misc. series**

I found my love at...

Some of the girls at...are a bit slow

The kissing bugs in...Get wise

**WHY DON'T YOU COME LIVE  
IN LANCASTER, PA.**



**BEST PLACE ON EARTH.**

Our final example was also written during the early years of World War I. In this case the locally mailed postcard might have had far reaching percussions. Did Edna Deverter's soldier ever respond? Is there a slim chance this card was the initial step that led to a marriage and a big family? It's addressed to T.R. Thompson, Company A, Fourth Infantry, Fort Crook, Nebraska.

"Dear unknown, Could I have the pleasure of corresponding with you? I found your address in a family story paper and my address is 53 Hebrank St., Lancaster, Pa." Posted Lancaster, Sep. 22, 1912 on a Bamforth card.

## ONO = O'YES!

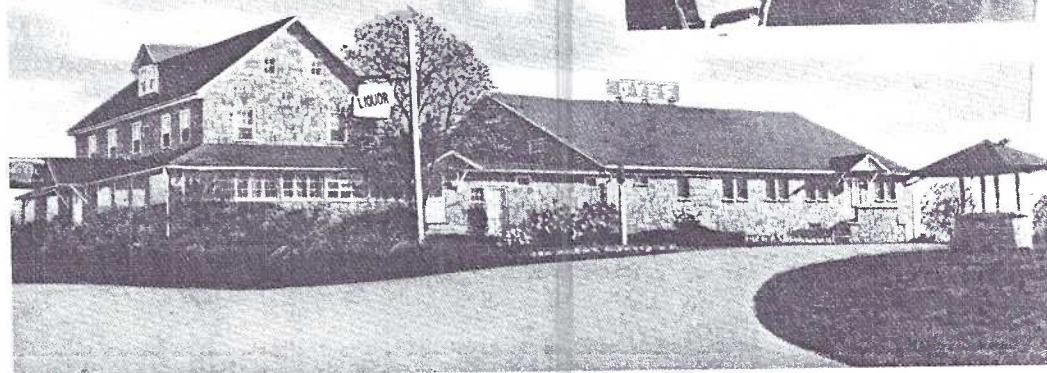
### Witty Names on Linen

Hidden in the countryside of northern Lebanon County is the sleepy village of Ono. Generations ago little Ono was on a major road - the original Route #22. Like thousands of country villages, it's been lost to the past. Even fifty years ago when the O'Yes Hotel was a jumpin' place, the village had already been bypassed by "the new #22". As we know, even that 4-lane highway has since taken a back seat to Interstate #81.

P.P. Frattaroli owned the O'Yes in the 1940's when Tichnor Bros. printed this great card for them showing the smart stone exterior and spacious lounge. There was ample room for parties, banquets and dinners as well as a hoppin' dance floor for the nearby GIs. **GIs?** Sure! Indiantown Gap Military Reservation was just 15 minutes away (only 9 minutes if your girl was waiting for you).

According to Onoians who'ved there most of their lives, when the war (WWII) was over and the camp population dropped tremendously,

*O'Yes Hotel in Ono, Penna.*



the steaks, sea food and Italian specialty dinners saw fewer and fewer hungry mouths and by the 1960's it was Ono! for O'Yes. Today the hotel (nearly a mile west of Ono's center) houses several apartments.

This colorful PC published by the

popular Mellinger Studios in Lancaster, can still be found if you search hard. **HINT:** check with LCPC's two Mellinger authorities, Jose Rodriguez or Bernie Heisey, both of whom have been known to keep aside a dup or two of favorite subjects.

## MEMBERSHIP ROSTER DISTRIBUTION

As promised, the LCPC Membership Roster was distributed at the January meeting. Our thanks our extended to Gwyn Fulmer, who did an magnificent job with the huge amount of information that needed compiling. We also thank Dot Fry and Jean Frank for proof-reading the work.

The Roster was not cheap to print and with the added expense of mailing, it's only fair that it be distributed to those members renewing their dues. 1998 membership will include a continuation of your subscription to THE CARD from April 1998 through March 1999. (The March issue is included with your 1997 dues.) We feel LCPC offers you a great deal for \$8 and trust you will agree by sending in your check today.

The Roster includes 301 active members, from #1 to #486. Our most recent member joined us in Jan. 1998.

### Library Directory Included

The Library Directory includes 78 different titles, all of which have been either donated by members or purchased by LCPC. There are a few titles with duplicate copies. This is an excellent representation of postcard references. Also included are a few books simply for their postcard pictures. All members should avail themselves of the Library. Books may be borrowed, free, for thirty day periods, that is, from meeting to meeting.

Anne Steinberg will monitor book use and recommend future thinning if certain titles are never used. This will enable us to add new titles and keep the size of the Library (presently housed in a member's home) to a practical size).

### Request for Roster

Roster distribution will continue at our Feb. and March meetings. After that - **members desiring a Roster will receive one upon receipt of their 1998 dues** (which include April 1998 through March 1999). PLEASE MENTION THAT YOU WOULD LIKE A ROSTER when you submit your dues check; one Roster to household, please.

Members from out-of-state, or for that matter, any member who can't attend meetings, may submit dues in the next 90 days and request the Roster/Library Directory.

**1998 dues check and Roster requests should be mailed to Dorothy Fry, 1050 Kleinfeltersville Rd., Stevens, PA., 17578.**

### COMMITTEE CHAIRS

Jim Ward lists the following who have offered to chair committees for this year:

Auction - **Norman Zimmerman**  
Auditing - **Gerald Hostetter and Bernie Helsey**  
Club Table - **Mary Ann Guntow and Ruth Yohe**  
Expo General Chairman - **Walter Mowrer**  
Expo Dealers - **Jose Rodriguez**  
Expo Publicity - **Jere Greider**  
50/50 - **Mary Darrenkamp**  
Librarian - **Anne Steinberg**  
Local Publicity - **Lewis Bechtold**  
Kitchen - **Ruth Moyer**  
Mailing - **Harold Moyer and Ruth Moyer**  
Mailing Labels - **Gwyn Fulmer**  
Membership - **Dorothy Fry**  
Property - **Harold Moyer**  
Windows to Our Past - **Jim Ward and Brian Frank-houser**. Please note, all of these people need help.  
Volunteer - don't wait to be asked!