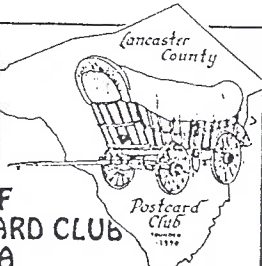


The Card

MONTHLY PUBLICATION OF
THE LANCASTER COUNTY POSTCARD CLUB
LANCASTER, PENNSYLVANIA



Meets 3rd Monday
Farm & Home Center
Routes 30 and 72
Lancaster, Pa.

Mar. 1998 Vol. 9, No. 3 #99

NEXT MEETING

March 16, 1998 7:30 pm

Buy, sell, trade from 6 pm

Yearly membership is \$8 (\$2 extra for each member at same address). Membership year is April 1 to March 31. Make check payable to: LCPC, c/o Dorothy Fry, 1050 Kleinfeltersville Rd., Stevens, PA., 17578. Advertisements are: \$15 full page, \$8 1/2 pg., \$5 1/4 pg., prepaid with copy. Classified ads are FREE to members, but please submit your ad for each issue. Send all ads, correspondence and change of address to Jim Ward, editor, 1795 Kleinfeltersville Rd., Stevens, PA. 17578-9773, phone 717-721-9273. THE CARD staff includes Dorothy Fry and Carol Dennis, proof readers and Gerald Hostetter. Harold and Ruth Moyer handle the mailings. Recent circulation averaged 229 homes and 14 postcard clubs with whom we exchange.

PROGRAM

Charter member #19, Don Davis, has had a sense of humor as long as we've known him. Can we suppose Mrs. Don Davis has a sense of humor, too? Come to the March meeting and be entertained by our perennial clown as he treats us to not just his comic cards but a broad grin, a few jokes and plenty of chuckles. (More Davis-type postcards on page 7).

PROGRAMS - Coming Attractions

Vice Pres. Susan Glass announced the following scheduled programs:

March - DON DAVIS "Fun Collecting Postcards"
April - Member Auction (lots received at March meeting)
May - JOE EPLER "Colleges and High Schools"
June - Annual Picnic (tentative date: Sunday, June 14)
July - LEWIS BECHTOLD - "135th Anniversary of the Battle of Gettysburg"

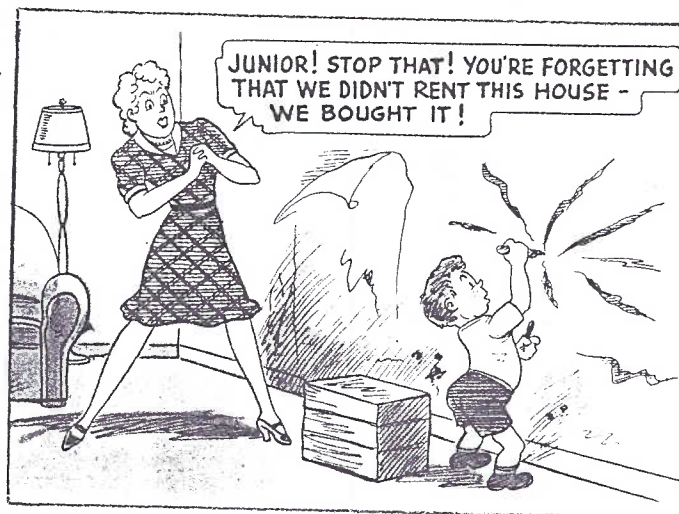
130,000 POSTCARDS AT AUCTION

Have a yen for a few hundred "new" cards in your collection? Would you like to add thousands to your dealer stock? Two local postcard auctions may be the answer. Over a quarter million cards will be sold at absolute auction March 6 and 26 in York and Lancaster.

PUBLIC AUCTION POSTCARDS

Estate of the late Nelson M. Baughman
and Edna Baughman of Dover, Pa.
SPRINGETTS FIRE CO. HALL
3013 E. MARKET ST., YORK, PA.
Friday, March 6, 4 pm (Preview 1 to 4 pm)
90,000 postcards in 380 lots

Send for free listing to
Gilbert & Gilbert Auctioneers
RD 1, Box 593, Wrightsville, Pa., 17368
Cataloged by Jim Ward



After a winter like we've just enjoyed (here in southeastern PA., at least), most of us have a good reason to smile. More Davis-type postcards on pg. 7.

NEW MEMBERS

#487 REYNOLD SCHENKE Box 59, Paradise, PA., 17562-0059. Ph. 768-7208. Collects Paradise area and likes photographing local scenes.*

#488 MARY SUE SCHENKE Shares husband Reynold's interests.

*Reynold's initial experience with photography/ publishing is the Mascot Roller Mill postcard, a fine colored, professionally made job. We hope he'll share his experiences in publishing. He believes *anyone* can produce a professional looking PC at little expense.

Our club's active membership has reached 303. Have you mailed in your dues and requested a new Roster? Info in masthead.

SYMPATHY EXTENDED

We are saddened to hear that the **Danz family** has suffered a loss. Sally Danz is a recently elected Director. Sally's father (Sherry's and Vanessa's grandfather) passed away at the time of our February meeting. The club extends its sympathy to them and their loved ones.

We are also sorry to hear that Carl Campbell, Member #75, died in mid-February. He had been a faithful member in our early years. Carl joined us in September 1990. We were in need of a projection screen. The call went out and before November, Carl had donated a fine 50"x50" screen which we still use.

PUBLIC AUCTION POSTCARDS

over 40,000 cards
March 26 - 6 pm
HOLIDAY INN
521 Greenfield Rd., Lancaster, Pa.
For listing send SASE to Mark Erb,
909 Longenecker Rd., Mt. Joy, 17552.
Hummer and Waltz, Auctioneers. AU3141L

Greg Kempf Postcard Sketches

The subjects we see on this page are from seven postcards with a 1986 copyright by George Kempf, Box 353, Minerva, Ohio, 44657. They are b/w continental chromes and, aside from the information above, show no printer or publisher identification, no numbering system, and only a generic stamp box. Were they published by the artist himself?

Each card has this reverse caption: Greg Kempf is an Amish-Mennonite gentleman who lives largely without

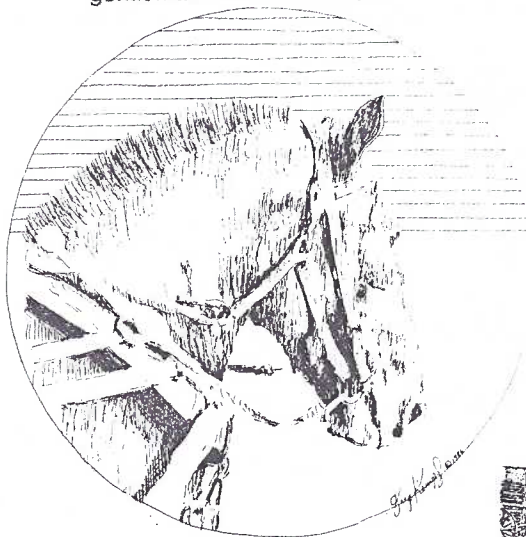
the modern conveniences of our times and believes that godliness with contentment is great gain.

"I try to bring out life as it had been known for hundreds of years, farm country life," he explains. "I think a lot of people are turning back to traditional values, and that's what my pictures remind them of - a time when things were quieter, more peaceful and neighbors helped one another.

The 'Amish-Mennonite' label is peculiar. As most of us in Lancaster County know one is either Amish or

Mennonite. The odd number of PCs (7) would lead us to believe there are more in the set. How many more are there? Is Kempf Amish and an artist? Is he still living? Is he still producing postcard art?

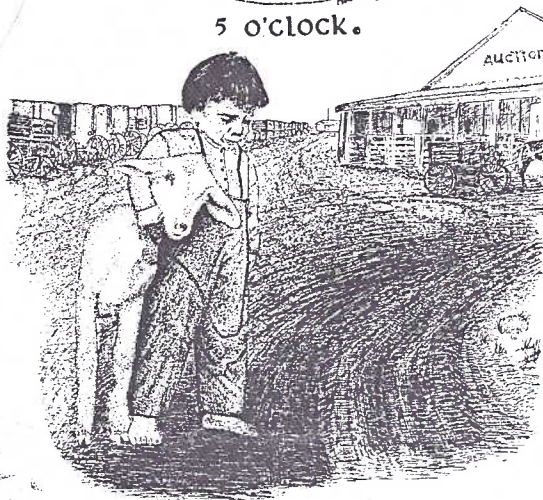
Can any of our members in Ohio - or anywhere - help us with these unanswered questions?



To The Work



5 o'clock.



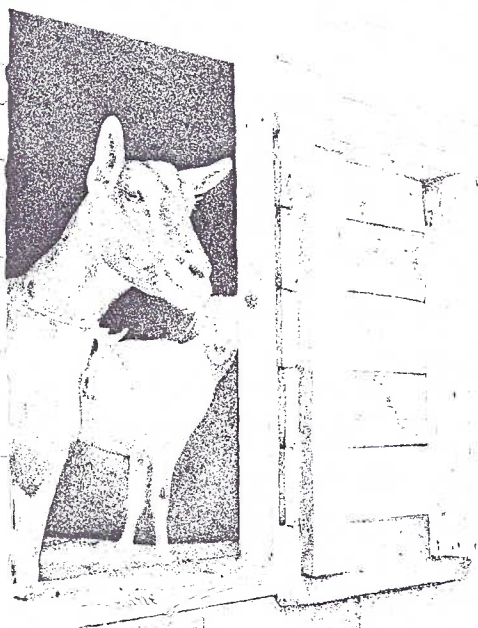
Sale Day Greg Kempf



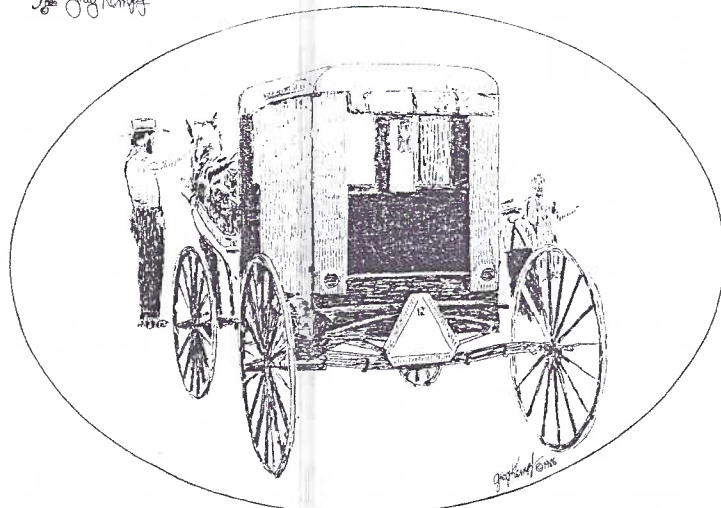
Saturday night Greg Kempf



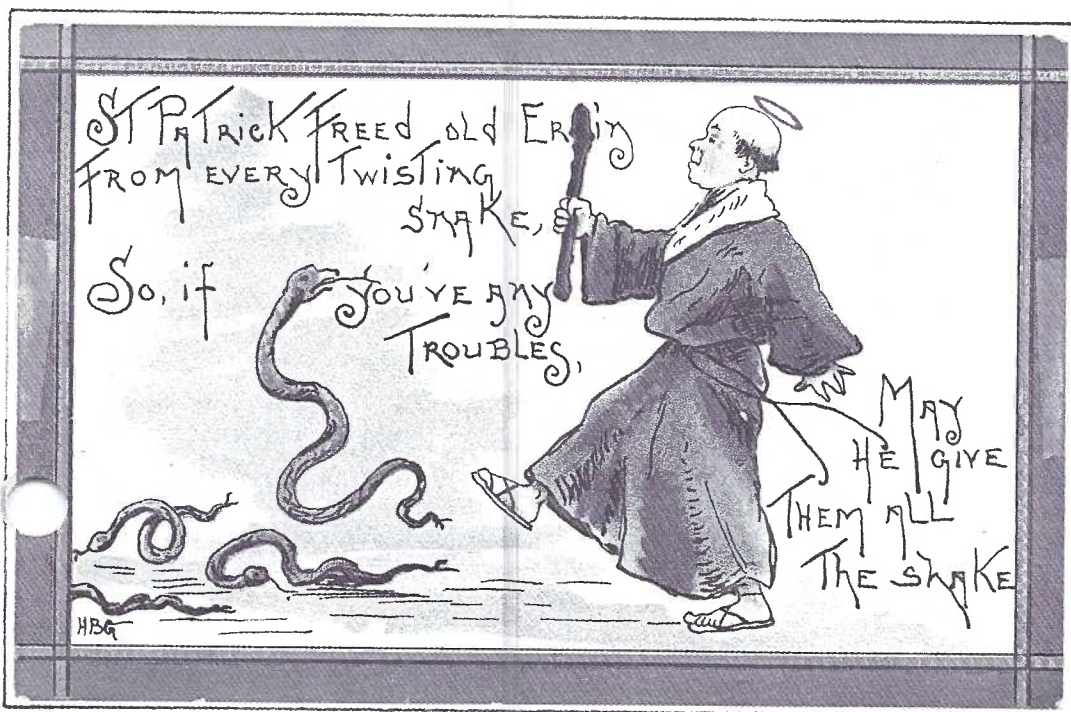
"Good Morning" Greg Kempf



Kids



IRISH MYTHS



Our pictorial essay includes three examples by artist, H.B. Griggs*. The firm, Leubrie & Elkins (L&E), printed Series #2253 above, and #2230, left.

A reminder - St. Patrick was very real. He lived from c.385-461. Calpurnius, his father, was a tax collector. Patrick, when only 16, was carried off by pirates and sold as a slave after his family's farm had been raided. He escaped, was reunited with his parents in Britain, studied for the priesthood in Gaul, became a bishop and was sent to convert the Irish.

But here's where history makes a mythtake: he allegedly drove all of the snakes and frogs from Ireland because they manifested evil.

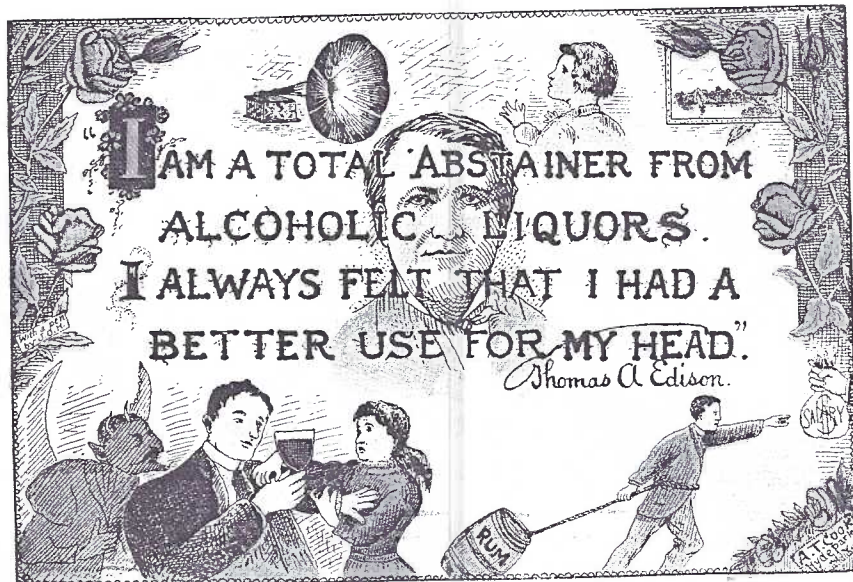
*Although we know *its* name was H.B. Griggs, no one has been able to confirm the gender of the artist. Isn't it amazing? We have nearly 100 examples of *its* work, know *its* employer, but nothing more!

Temperance Messages...

1,000 for \$1.35

The Temperance Movement found in the penny postcard an inexpensive missile in its war against saloons. If you're trying to complete a set of Whatever, don't be surprised if that one missing Whatever card deals with drinking - PRO or CON.

A.T. Cook of Hyde Park, NY was an earnest advocate of temperance. He published an abundance of Temperance Postcards. The art work is

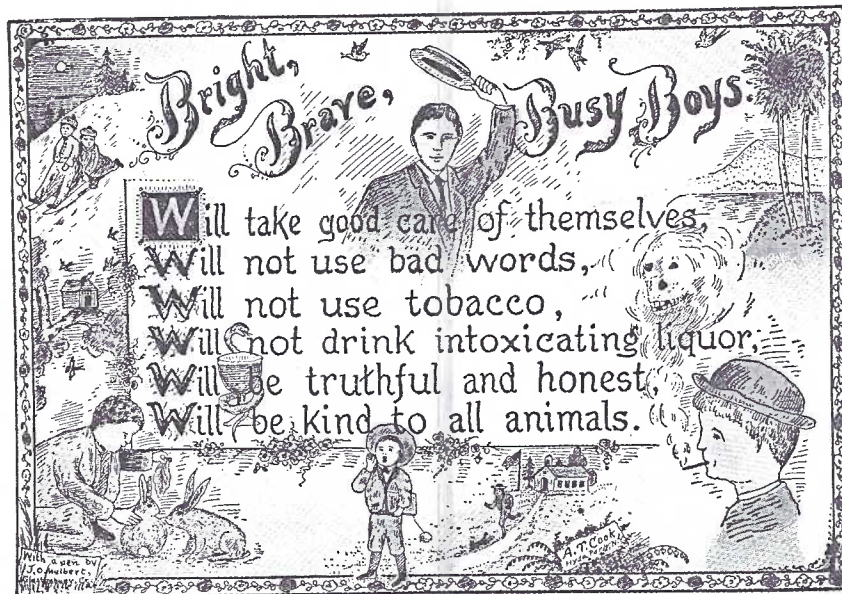


Cook sold his cards (including many with religious messages) quite cheaply. It was the missionary's message and not profit that was more important to him. In his ads he sold anyone a set of 20 cards for 15¢ or 60 different for 45¢!

He encourages children to start their own "clubs". They could purchase 480 cards for \$3.00 and receive a beautiful watch or other premium from his catalog free and postpaid! Dealers were sold the same cards in a lot of 1,000 for just \$1.35.

largely by J.O. Hulbert, Glastonbury, Conn. and conveys the anti-drinking message. The accompanying quote was not always Cook's, but rather a notable in business, industry or religion.

Cook's fight also included Tobacco and these cards, too, are becoming pricey with dealers who are able to find them. They don't stay in stock albums for long. Alcohol and Tobacco are major role players in social history and that group of collectors is growing; more demand—the same number of cards for more collectors—higher prices.





Temperance Messages...

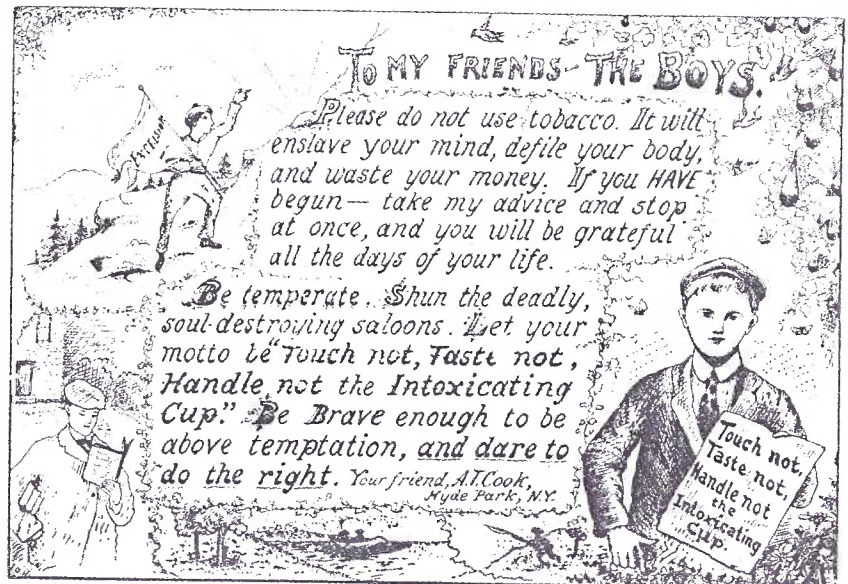
1,000 for \$1.35

a representative group for \$3 each or less. The temperance cards, though, may cost you more.

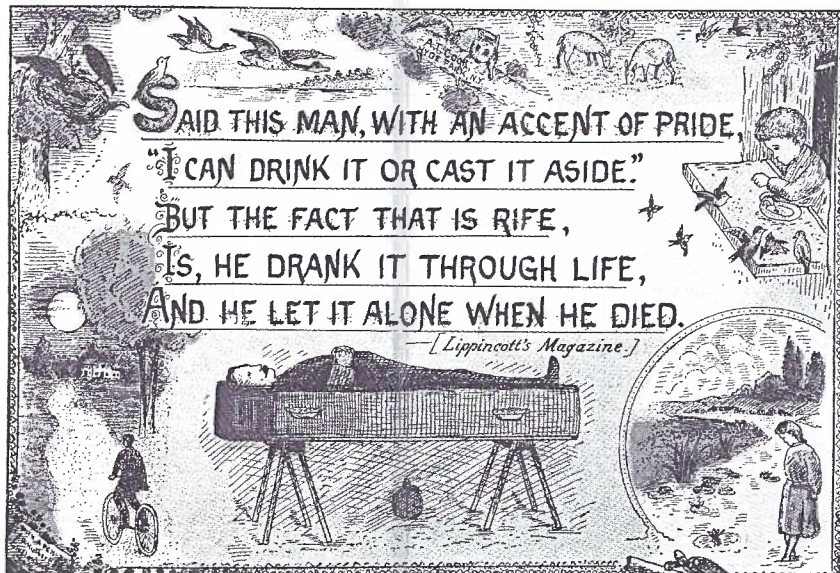
All of the cards are collectible, including those with a religious theme, so don't ignore them, assuming because they're "new looking" that they're reproductions. They aren't, and like many small unearthed hoards, will soon be dispersed and steadily grow in value.

Cook's income was derived from seeds. He was a direct mail seedsman selling everything, however, in packets for 5¢ and 10¢. It was here that he offered premiums, too, and a seed catalog accompanied all post-card orders.

In the past year or so a number of unused A.T. Cook cards have surfaced so it's possible to put together



NEW CHECK POST CARDS, 20 ORIGINAL DESIGNS, 20 CTS. 10 FOR 22 CTS. 100 FOR 65 CTS., POSTPAID. PUB. ONLY BY A. T. COOK, SEEDSMAN, HYDE PARK, N. Y. AGENTS WANTED. (SERIES NO. 1.)

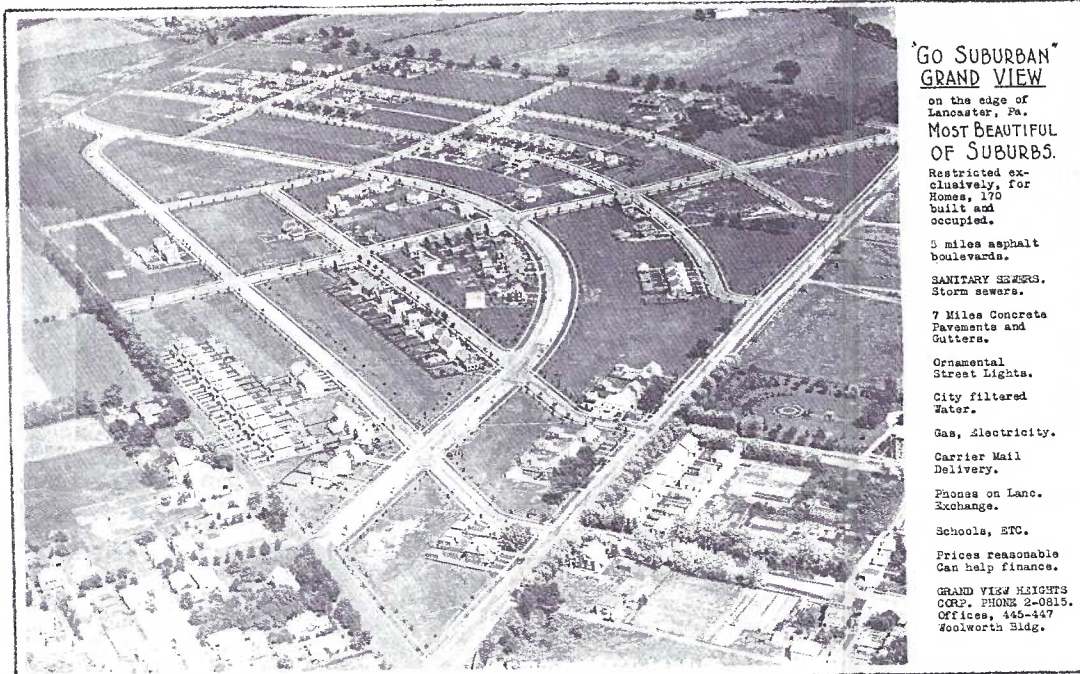


FUTURE SHOWS

March 7 Belmar, N.J. Taylor Pavilion. 9 to 4. Free adm.
 March 27-28 Lancaster, PA. Farm & Home Center. 10 to 6, 10 to 5. \$1.25 with card (enclosed).
 April 3-2 Havre de Grace, MD. Police Community Center. 10 to 6, 10 to 4. \$3 adm.

"GO SUBURBAN" GRAND VIEW

on the edge of Lancaster, Pa.
Scarce and Very Scarce Local View Cards



After all, it's been a part of the scenery for nearly sixty years. We never think of it as a "development". Grand View Heights is a development that was begun in the early 1930's. Its nestled, along with its neighbor Rossmere, between the PRR tracks on the south and the route #30 bypass on the north. The New Holland Pike and the old RCA buildings border it to the east. Like many developments, it advertised extensively. In the 1930's postcards were an excellent means of advertisement.

The Darmstetter Studio aerial view is a real photo card. (Their name barely shows along the lower edge.) Along the right margin the Grand View Heights Corp. expounds the merits of its new housing.

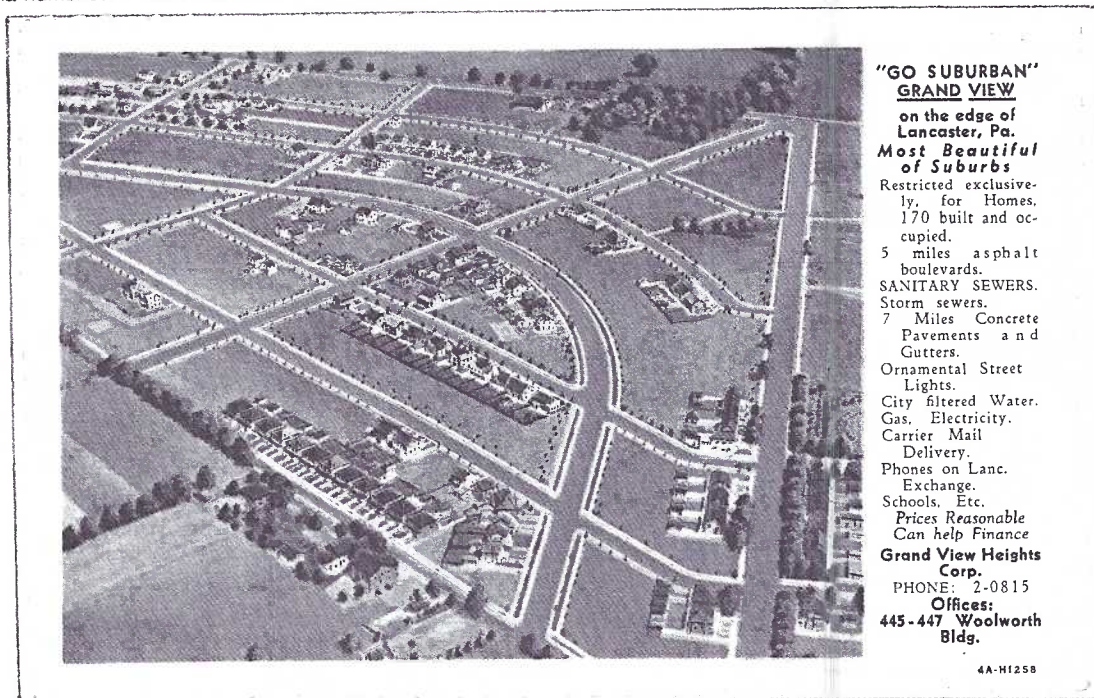
On the linen card - a similar, but not the same aerial view - the exact advertisement appears on the right margin. The deckle edged linen was produced by Curt Teich & Co. Inc. of Chicago. Fortunately for CT's excellent records, we are able to date most of their cards by an alpha-numerical formula and we know this card was

made in 1934.

Darmstetter was the major photographer for the City and a fair supposition is that he took a number of aerial shots of Grandview (today's spelling). It follows, then, that the Corp. chose for its more durable linen publication, a view cropping homes to the south which were not part of its property.

Just recently I bought (from John Klein) the first linen I've seen with a cancellation - Washington, D.C., Nov. 16, 1934. It was sent from "Jack" to Mrs. Pauline Bowman, West Lancaster, Lancaster, Pa. West Lancaster is also an "older" development, but on the Lincoln Highway, west, beyond Maple Grove, on the south side. Most of its avenues are named for colleges.

In more than 35 years of collecting Lancaster City PCs, I've yet to see a half dozen of the linen "Go Suburban Grand View" cards. Curt Teich printed 12,500 of them - not a large number for postcard production. I've seen only this one real photo type. JFW.



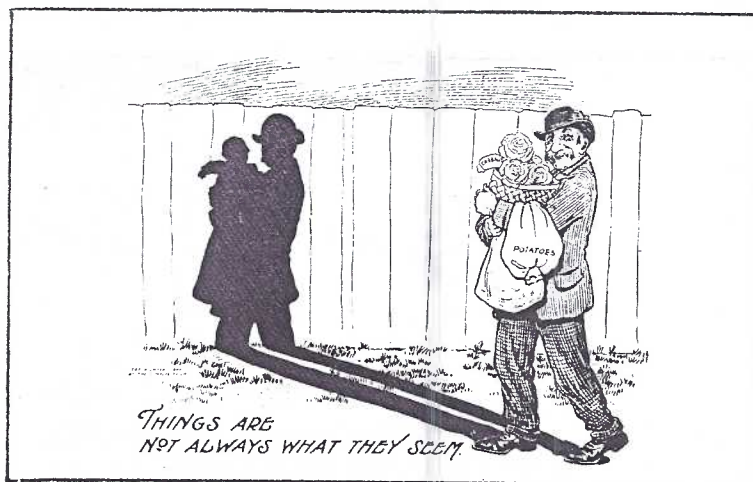
ERIC SAYS "THANKS"

"Eric and Linda Mylin would like to say 'thank you' to everyone who welcomed Eric (Member #482) to the L.C.-P.C. by sending him a postcard. Each one is a special addition to his growing collection. Eric is eight years old and was introduced to postcard collecting by his grandmother, Gwyn Fulmer, also an L.C.P.C. member."

Sincerely, Linda Mylin (Member #483)

A POSTCARD FOR PEG (#11)

Peg Hanna, Member #11, a Charter Member, has been around since Day #1 = *she was at our first meeting* and seldom misses a meeting. An active octogenarian, Peg moved last November to United Zion Retirement Community, 722 Furnace Hills Pike, Lititz, Pa., 17543. She recently suffered from the terrible sore throat which has persisted for several weeks. At this writing, she's slowly recuperating. I'm sure a postcard of any type would be appreciated. JFW.



These funny bones aren't from Don Davis' private hoard of comic cards but you can bet he'll show us many others to create a sea of grins and a barrel of belly laughs.

EXHIBITS

Sixty-four members and guests attended February's meeting and fell in love with a carload of **CUPIDS**. Our program presenter's wife, Shirley Bubb, made her first board and walked away with first prize! Congratulations!

SHIRLEY BUBB FIRST The Bare Facts - I Love You
JIM WARD SECOND Wings, Wings, Everywhere
WALTER MOWRER THIRD To My Love

HONORABLE MENTIONS

EARL CARVER Cupid's Capers
DON DAVIS An Arrow Escape
HAROLD MOYER Cupid's On The Job
VALERIE REFI Watch Out Below for Cupid's Bow
NORMAN ZIMMERMAN Modern

Dot Fry announced the following subjects for the near future: March (single card) **SPRING**; April (board) **THE LETTER "A"**; May (board) **POTPOURRI**.

PRIZES

Valerie Refi won the 50/50; the free door prizes (two large packs of postcards, 100 sleeves and 10 album pages) were won by Harold Moyer, Ralph Schenke, Harry Lines and Ruth Groff.

ODDS 'N ENDS

The unusual **TEN HOUR HOUSE** will be LCPC's subject for its annual NPW card. Individual members are encouraged to make their own cards. For info, hints and encouragement, contact these members: Earl Carver, Betty Weaver or Jim Ward. National Postcard Week is the first full week of May. Your card will be shown in the May issue of **THE CARD**.

Members selling in February were Audrey Butler, Norman Zimmerman, Gordon McKinzie, Dick Bishop, Mike Middleton, Howard Steinberg and Jim Ward. We're so fortunate to have a chance to buy and trade at each meeting. Do you know some clubs must invite a dealer from out of town for a lack of local sellers? If you'd like to participate an 8-ft. table is only \$2.50. You may set up to sell from 6 pm. Not much to sell? = half a table is \$1.25.

I CAN'T WRITE MUCH ON A POST CARD —



BUT I GUESS THIS COVERS EVERYTHING!



JOHN, CUT UP MRS JONES RIBS -
 SLICE HER LIVER AN' TRIM HER LEGS.
 WHILE I ATTEND TO THIS LADY !!



GOOD TV - for kids from 9 to 93

Once in a blue moon you'll find an educational show that actually teaches 90% of the time. John Acorn, from British Columbia, presents a homey look at real animals, real plants and related objects such as binoculars, lenses, books and drawings - all about Nature. His theme song is catching, a pleasant intro to a worthwhile show:

Well, I'm a Nature Nut. I'm not afraid to admit.
I'm wild about the wild things and proud of it.
I'm just a simple case - open and shut.
No doubt about it, I'm a Nature Nut.

Today we'll go bird watching.
Tomorrow we'll catch toads.
The next day we'll take photographs
of bugs along the road.
I never get the feeling that I'm in a rut.
That's why, I'm a Nature Nut!

the program concludes

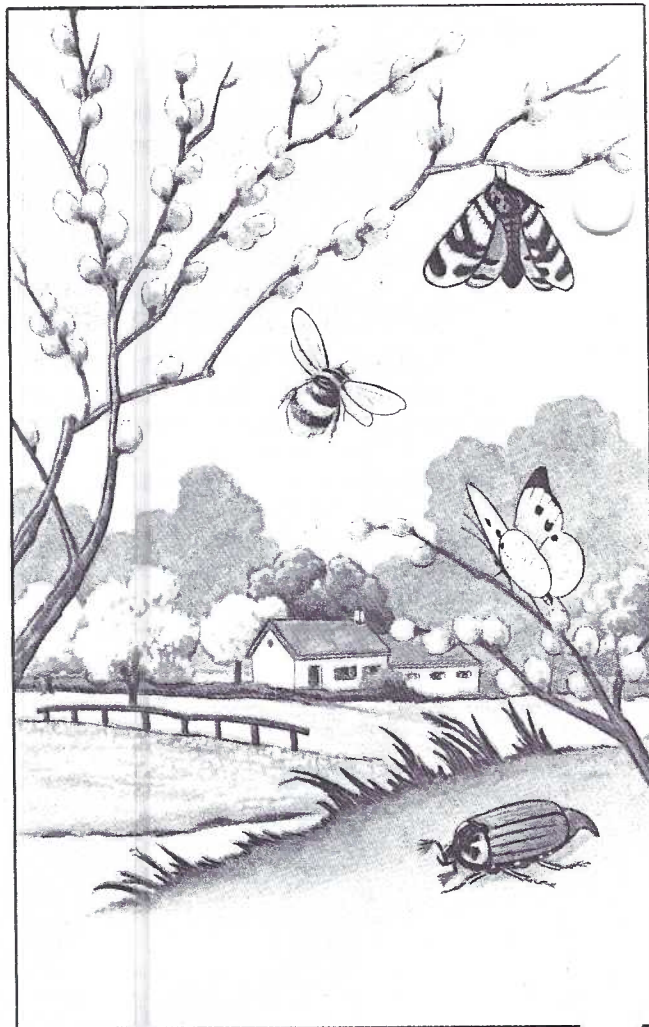
Same time each and every week
Uncensored and uncut.
No doubt about it, I'm a Nature Nut!

John Acorn = Great North Productions on the Animal Planet Channel, 11 am EST (Channel #46, Blue Ridge Cable in Lanc. County). Ed. note: unsolicited adv. Color postcard is #7539, unidentified Belgian publisher.

GERALD'S RAG TOP IN MAG

The Mar/Apr issue of REMINISCE has a half page article including a color photo of Gerald Hostetter's 1949 Dodge Coronet convertible. It was the subject of the *Name That Car* column for the issue. Like the vintage table top radios he also collects, it was in super elegant condition.

Gerry's postcard interests are views of Florin, Mount Joy and Mt. Gretna and the Dexter Silvercraft cards. 'Way to go, GH!

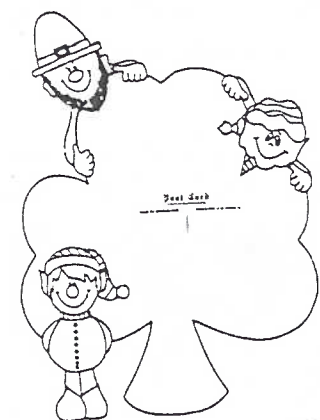


MORLATTON POST CARD CLUB INC.

Presents Postcard Show #23

Farm and Home Center
1383 Arcadia Road
Lancaster, PA 17603
(off Manheim Pike Rte. 72)

Friday, March 27, 1998 10 A.M. to 6 P.M.
Saturday, March 28, 1998 10 A.M. to 5 P.M.



N
O
E
A
R
L
Y
B
I
R
D
B
U
Y
I
G

For more information call
M. W. Hall, (803) 871-9891
Kay Feight, (717) 263-1638
Anne Darrah, (610) 385-3408

Admission \$1.50
(25¢ off with ad)