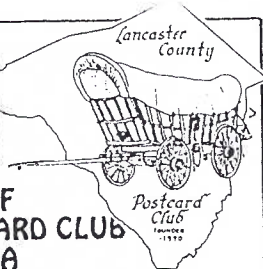


The Card

MONTHLY PUBLICATION OF
THE LANCASTER COUNTY POSTCARD CLUB
LANCASTER, PENNSYLVANIA



Meets 3rd Monday
Farm & Home Center
Routes 30 and 72
Lancaster, Pa.

May 1998 Vol.9, No.5 #101

NEXT MEETING

May 18, 1998 7:30 pm

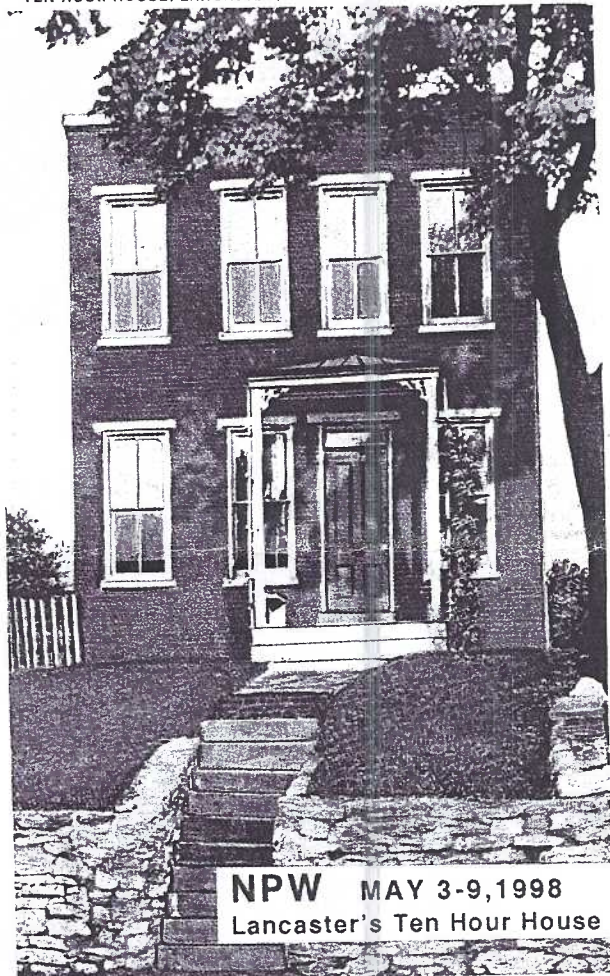
Buy, sell, trade from 6 pm

Yearly membership is \$8 (\$2 extra for each member at same address). Membership year is April 1 to March 31. Make check payable to: LCPC, c/o Dorothy Fry, 1050 Kleinfeltersville Rd., Stevens, PA., 17578. Advertisements are: \$15 full page, \$8 1/2 pg., \$5 1/4 pg., prepaid with copy. Classified ads are FREE to members, but please submit your ad for each issue. Send all ads, correspondence and change of address to Jim Ward, editor, 1795 Kleinfeltersville Rd., Stevens, PA. 17578-9773, phone 717-721-9273. THE CARD staff includes Dorothy Fry and Carol Dennis, proof readers and Gerald Hostetter. Harold and Ruth Moyer handle the mailings. Recent circulation averaged 229 homes and 14 postcard clubs with whom we exchange.

PROGRAM

Member #54, Joe Epler, has an extensive collection of college girls on postcards. Actually, they were the core of his collection until he expanded to include pennants, mascots and most college-related subjects on PCs. Joe continued to expand his interest when college cards become more difficult to find. So, he extended his postcard images to high school girls, pennants, etc.

TEN HOUR HOUSE, LANCASTER, PA.



NPW MAY 3-9, 1998
Lancaster's Ten Hour House

COMPLETE BRICK HOUSE ERECTED AUGUST 1ST, 1873,
ON A WAGER IN EXACTLY TEN HOURS

Our club's 1998 NPW card. In full color, it's available for 25¢ plus SASE to members, 50¢ each plus SASE to non-members. Members' NPW cards are on pages 6 and 7.

MUSÉE DU LOUVRE.



Mme VIGÉE-LE BRUN.
PORTRAIT DE M^{me} LE BRUN ET DE SA FILLE.

10421

(B. C.)

Portrait of Mme. Vigée-Lebrun and her daughter by V. Lebrun. Published by Lapina, Paris.

See Women Painters and Mothers Day story
by J. Rudisill.

Our May program will include Joe's many albums on display, selected cards on the opaque projector and a question and answer period. The latter can prove beneficial to us all. Joe has one of the more extensive collections on the east coast, so bring your questions AND any cards you're willing to sell. He's an active buyer!

NOTE: JOE will be making a 1 1/2 hour trip from Northumberland, Pa. Let's show our gratitude by having a big audience for him.

MONTHLY EXHIBITS

Sixty-two members and two guests participated in April's voting for the boards beginning with the letter, A. The theme offered a wide latitude of subjects-

JIM WARD	FIRST	Local Autos
WALTER MOWRER	SECOND	Advertisements
RAY BUBB	THIRD	Am. Artist, Chas. M. Russell

HONORABLE MENTIONS

EARL CARVER	Art of Morris Katz
POLLY CURTIS	A - Art
BRIAN FRANKHOUSER	Australian Ballots
BARABRA MOWRER	Amish Farm
HAROLD MOYER	Airships
RUTH MOYER	Alligators

Thanks to the participants. May's board subject is POTPOURRI (any subject - get wild!)

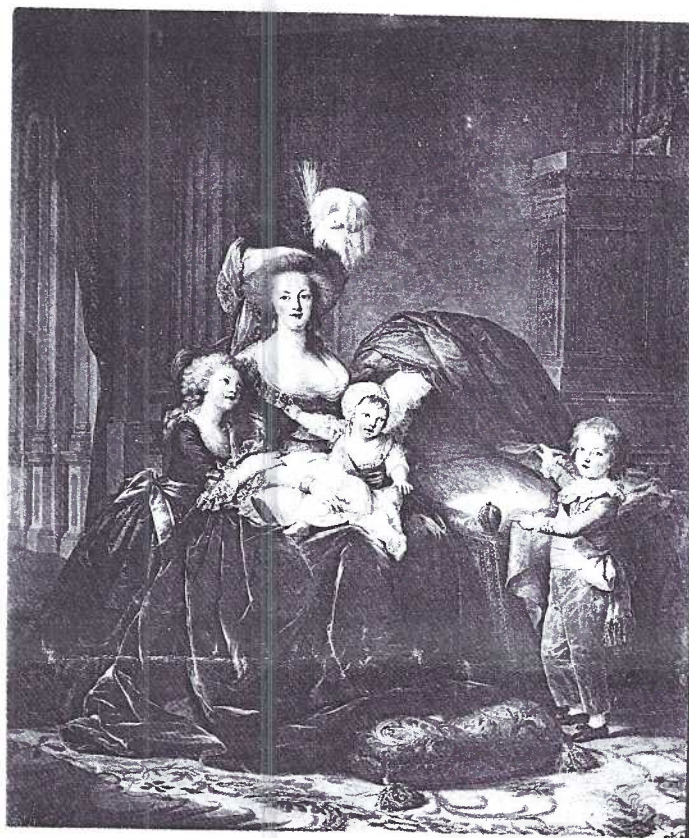
Woman Painters

by Jim Rudisill

As a Mothers Day tribute to a trio of great women painters,all working in the same era,we show postcards of paintings by:

Angelica Kauffman 1741-1807
Adélaïde Labille-Guiard 1749-1803
Elizabeth Vigée-Lebrun 1755-1842

Adélaïde and Elizabeth,both French,were daughters of artist fathers and each earned her own way and support at age 16. Of the three,A.Labille-Guiard was most respected by the French academy men painters who considered Vigee-Lebrun's work too decorative,feminine and lacking historical profundity. Swiss born Angelica Kauffman,age 25,moved to London,purchased a house, befriended Benjamin West and Sir Joshua Reynolds.She taught miniature painting to Mrs.Richard (Maria) Cosway who later captured the affection in Paris of the widower,Thomas Jefferson.



36

MARIE-ANTOINETTE ET SES TROIS ENFANTS

D'après le Tableau du Musée de Versailles peint par Madame Vigée-Lebrun en 1787.

Les trois enfants sont :

- 1° Marie-Thérèse-Charlotte (M^{me} Royale), née à Versailles en 1778, qui épousa en 1799 son cousin le Duc d'Angoulême et mourut à Frohendorf en 1851.
- 2° Le Dauphin Louis-Joseph, mort le 4 Juin 1789.
- 3° Le Duc de Normandie (Louis XVII) né le 27 Mars 1785, mort le 8 Juin 1795 dans la prison du Temple.

ND Phot

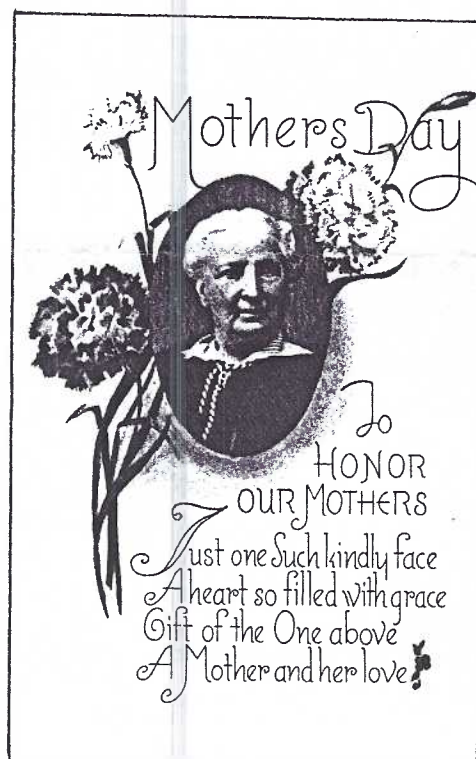


52 LL.

Mme VIGÉE-LEBRUN. — Le Dauphin.

MUSÉE DE VERSAILLES

Le Dauphin,detail from Marie Antoinette and Her Infants by V.Lebrun. Published by LL,Paris. Dauphin County,PA was named for the eldest son (the Dauphin) of Louis XVI and Marie Antoinette in 1789 in appreciation of France's help in our war with England.



The Exhibition at the National Museum of Women in the Arts, Washington, D.C. features Lavinia Fontana of Bologna (1552-1614). "The World's First Successful Professional Woman Artist", coincidentally, bore eleven children while sustaining a prolific career!



Louise-Elisabeth of France, Duchess de Parma by A. Labille-Guiard. #29233 by Stengel, Germany. My sepia version of this postcard led me to Jim Ward's colored version of the Stengel shown here. It, in turn, was found to depict only 1/5th of a full length portrait of a mother and son (see illus.) Louise Elizabeth of France, sister of Louis XV, died in the late 1750's. Thirty years later, A. Labille-Guiard was commissioned to paint the Duchess in 1787-1788. Thus, it is a posthumous production - the shadow of death indicated by the half-shaded face and figural shadow on the right wall.

Portrait of herself by V. LeBrun. M29937, Rotograph, NY.



London

Portrait of herself

M. Le Brun



Dresden

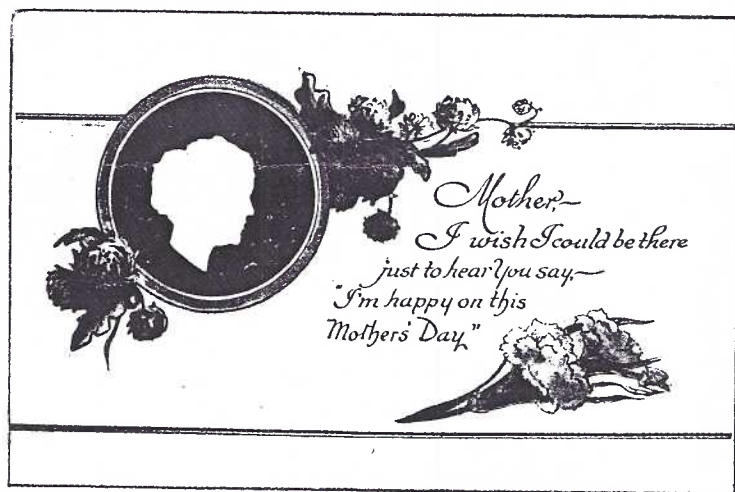
Vestalin

Kauffmann

Vestalin (Vestal Virgin) by Angelica Kauffman. M29720, Rotograph Co.,NY.



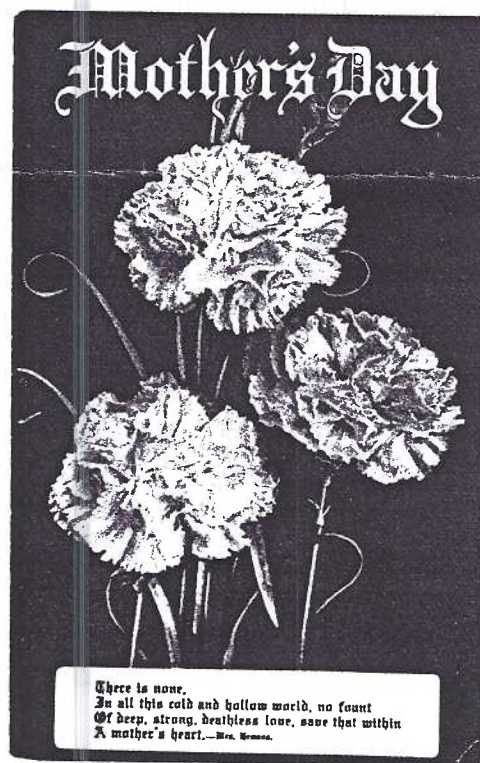
Self-Portrait with Two Pupils by A.Labille-Guiard. Published by The Metropolitan Museum of Art.



Who remembers the vogue 60 years ago of wearing a red carnation if your mother lived and a white one in memory of a mother deceased?

In conclusion, the word **carnation** was used to indicate rosy or pink cheeks in portrait paintings of our three lady artists. **Carnation** derives from the Latin word for flesh, as in chili con **carne**, i.e. "chili with meat".

by Jim Rudisill, Member #66



There is none,
In all this cold and hollow world, no sound
Of deep, strong, deathless love, save that within
A mother's heart. — Mrs. Hemans.

LYMAN'S SEEDS

Lyman's Champion Seed Display Box - Our Silent Salesman

In Lancaster County we always thought of Parks in Paradise or Rohrer's in Smoketown for seeds, especially if you lived in the eastern end of the county. Both packaging houses offered their seeds throughout the area as well as in neighboring states. So when I came across this great over-sized (3 1/2 x 6 3/8) card at Jim Morrison's stand, I couldn't resist the temptation, even though it was a seed name foreign to me. It was in color, though, and it had a predated printed message, indicating the "teens" (80 years old). Intrigue clinched the sale. There, midst the thirty packs of seeds were BORECOLE, NASTURTIUMS and SALSIFY.

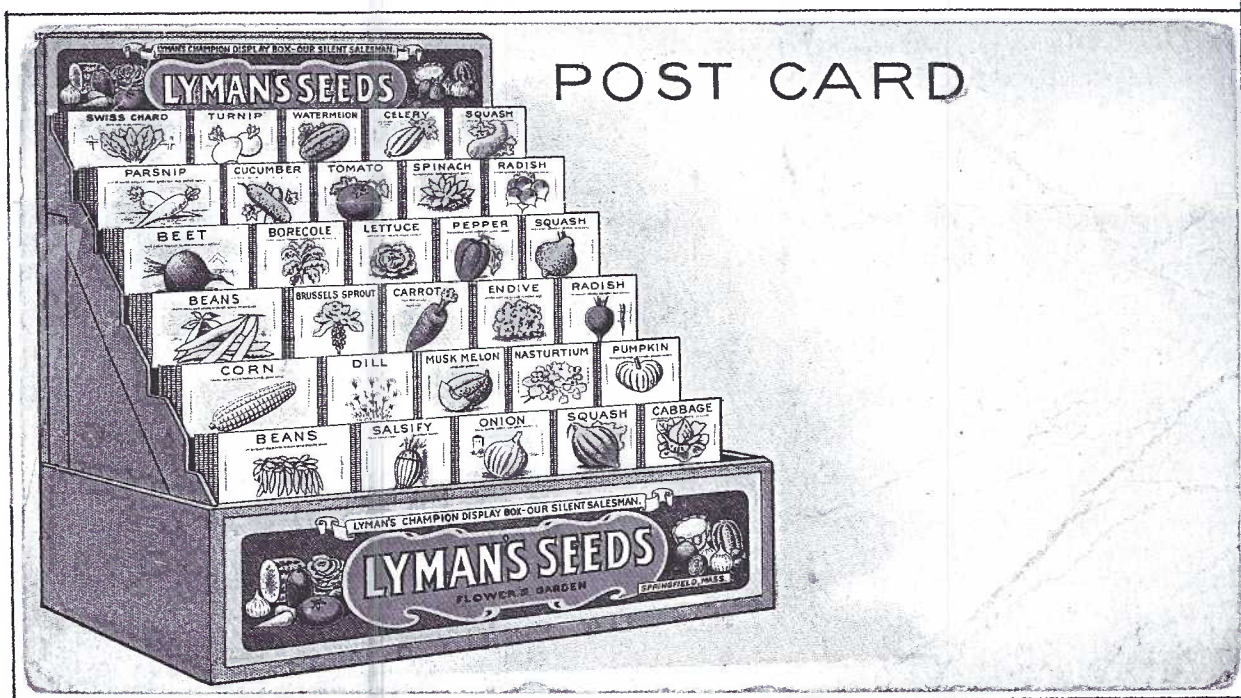
Checking our member from Blainsport (who happens to farm an over-sized garden with the richest bottom soil this side of the Mississippi delta) I confirmed my suspicion that the nasturtiums, though sold way back then as a pungent seasoning, like mustard, had since be relegated to the flower seed racks. True, there are people who sprinkle a few nasturtiums on their salads and, yes, I've eaten a petal or two, but I'll be the first to admit that bright yellows, oranges or reds serve best when they serve as color, period. NASTURTIUM translates to "twisted nose". Eating enough of the pungent leaves and seeds would twist your nose beyond the pain threshold of a normal person.

Harold Moyer, the Blainsport agronomist, (have you ever sampled his asparagus?) remembered hearing the name SALSIFY but lacked details. BORECOLE had never entered his vocabulary.

A phone call to P.L. Rohrer & Bro., Inc.* found us answers. Yes, NASTURTIUMS are sold these days as flowers and, yes, they know many flower growers scattered the petals on salads. And yes, SALSIFY is still sold and packaged and although they don't have a great demand, it is still ordered enough to stock. Its leaves are grasslike, its flowers are purple and its tap root edible. In fact, many people call it "oyster plant" or "vegetable oyster". So if you're of the breed that swallows oysters whole, you may just want to try a corner of your yard with a handful of salsify seeds and have oyster flavor all year 'round!

BORECOLE stumped Rohrer's - at least the clerk who patiently talked with us. So it was on to the American Heritage Dictionary (Webster flunked on BORECOLE.) Do you remember the Boer War? The peasants (boers) were fighting in South Africa. BOER or BOOR means "peasant". We're all familiar with COLE - cabbage, cole slaw, etc. So BORECOLE is "peasants' cabbage" and not handled by Rohrer's. Has anyone ever seen it for sale?? A free pack of postcards if you send us the seed pack (empty is OK). A package that says "kale" doesn't count = that's its modern name!

Oh, yes, the postcard reverse has space for a Lyman salesman's message soliciting seed pack orders from customers (probably general stores). Lyman was an importer and wholesale dealer from Springfield, Massachusetts. *2472 Old Philadelphia Pike, Smoketown, PA., Mon - Fri., 8 to 5, Sat. 8 to Noon (ED. - unsolicited adv.)



MEMBER NPW PCs

Making your own National Postcard Week card is not difficult to do. Ask any of these perennial publishers and you'll find it's easy and not expensive and, most of all, you're promoting the fastest growing hobby in the world!

Betty Weaver provides her own artistic talent, right. It's only her second NPW, but a dandy! A brief history of Highland Light is on the reverse. She'll exchange or sell for 50¢ plus SASE.

Earl Carver, our favorite slush-pumper, used a recent photo. Earl's been trading NPW's for years.

Our Canadian friend, **Stan Hopkins**, has a giant 4"x9" in grey and red, reduced here for obvious reasons. He wants to trade cards and will buy old issues.

Anne Valsing's colored home-made card is reduced 30%. She'll exchange or sell for \$1 plus SASE.




Highland Light - 1798

Truro, Cape Cod, Massachusetts

NPW

MAY 3-9, 1998
BETTY JANE WEAVER



Earl C. Carver
*Blowing in the 15th Annual
National Postcard Week
May 3-9, 1998*



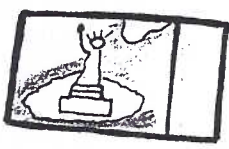

National Post Card Week 1998

API

In honor of

THE CENTENNIAL
of
NEW YORK CITY
and
THE PENNY POSTCARD

New York provided
the views
The post card spread
the news



NPCW

1998 1998 1998 1998 1998 1998 1998 1998

FUTURE SHOWS

MAY 16 - TOWSON, MD. at Days Inn, 9-5. Dee Delcher Show. Free adm

MAY 22-23 HAGERSTOWN, MD., at Howard Johnson Motel, 10-6, 10-3. John McClintock Show. Free adm.

JUNE 7 DANVILLE, PA., at Days Inn (new location for Susquehanna Valley Post Card Club's show).

JUNE 19-20 FORT WASHINGTON, PA., Don Skillman Show, 1-7, 9-5, \$2.

NPW CARDS contd.

Jim Ward's 8th card commemorates a local bridge's 100th anniversary. A brief history is on the rev. He'll exchange or sell for 50¢ + SASE

Use your recently published Membership Roster for addresses. A few rosters remain awaiting requests.

NEW MEMBERS etc.

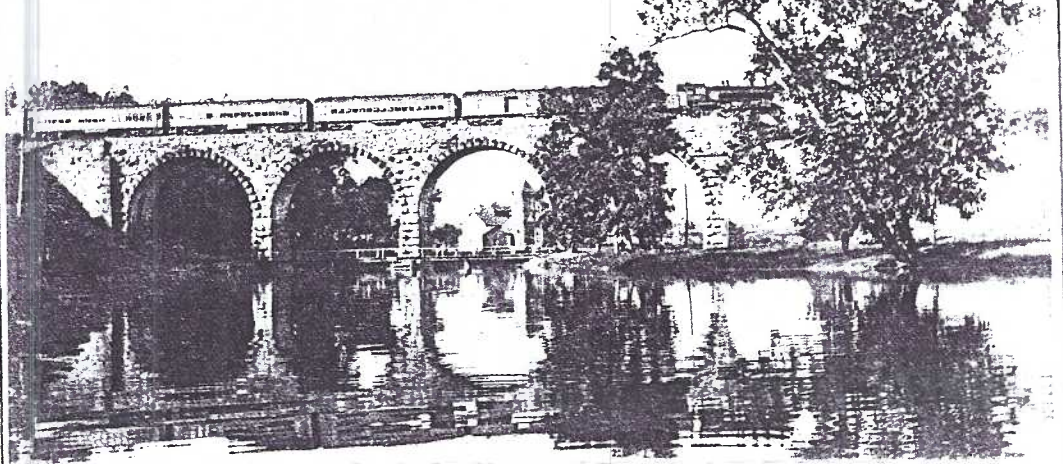
#491 VERA M. SZVITICH 415 Alder Rd., Dover, DE., 19904. Vera joins us, wife of Charles S., #470, who collects McKeesport, PA., Dover DE, inclines and amusement parks. Change of address: Linda Mylin and son Eric, 34 Poplar Lane, Elizabethtown, PA., 17022. Ph. 361-2698.

AUCTION ACTION

Our 95 lots in April were auctioned by Mark Erb and Glenn Burkhardt, apprentices working with Jan M. Waltz of Manheim. We thank Walter Mowrer for securing their free service. Also, another big Thank You to Norman Zimmerman and his volunteers - Valerie Refi, Walt Mowrer,

NPW MAY 3-9, 1998

100 years - Pennsylvania Railroad Bridge over the Conestoga River, Lancaster, Pa.



Ruth and Harold Moyer, Bob Kramer and John Rodkey.

Gross receipts were \$273.25 of which LCPC retained \$27.33. Once again, the lot prices have been eliminated due to a lack of space.

LUCKY MEMBERS in April

JUDY SMOKER won 100 postcard sleeves and ELIZABETH GRAVER won 10 postcard pages in the door prize drawing. BILL WEIKERT won the 50/50 worth \$23!

Rigid Plastic Sleeves

3-3/4 x 5-7/8	25/\$12.00 PP	5 x 7	25/\$22.00 PP
	50/\$20.00 PP		100/\$80.00 PP
	100/\$35.00 PP	8 1/2 x 11	25/\$28.00 PP
	1000/\$275.00 PP		100/\$100.00 PP

Semi Rigid Sleeves 5 Mil Side Load

3-7/8 x 5-7/8	100/\$12.00 PP	4 1/2 x 6 1/2	100/\$15.00 PP
	500/\$50.00 PP		500/\$70.00 PP

Poly Sleeves Postcard Size

1000 SUPER CLARITY Polypropylene	\$15.00 PP
1000-2 MIL	\$12.00 PP
500-4 MIL	\$10.00 PP
1000 CONTINENTAL-2 MIL	\$15.00 PP
500 FDC-4 MIL	\$12.00 PP



White Plastic Dividers

100/\$15.00 PP	500/\$65.00 PP
With tabs: 100/\$16.00 PP	500/\$70.00 PP

White Cardboard Boxes

POSTCARD SIZE - Half top, Full Bottom OR Full Top, Slant Front Bottom
6-10 boxes \$3.00 each PP 11-24 boxes \$2.75 each PP
STEREO VIEW/FDC BOXES 1/2 TOP (8W x 4-3/4 D x 14" L)
6-10 Boxes \$3.50 each PP 11-24 Boxes \$3.25 each PP
25 Up \$3.00 each PP

Vinyl Pages

4 Pocket (3 1/2 x 5 1/2)
3 Pocket (3 1/2 x 8 1/2) SL
3 Pocket (4 1/2 x 6 1/2) TL
2 Pocket (5 x 7)
1 Pocket (8 1/2 x 11)
9 Pocket (2 1/2 x 3 1/2)

Archival Pages

4 pocket
3 pocket 25/\$ 6.50 PP
3 pocket 100/\$18.00 PP
2 pocket 250/\$40.00 PP
1 pocket MAY BE MIXED
9 pocket

ALL POSTPAID WITHIN CONTINENTAL U.S.

POLY SLEEVES 2 MIL Sizes 4 x 7 to 12 x 18

BACKING BOARD - Solid White 9 x 12 • 11 x 14 • 11 x 15 • 12 x 16

BLACK CHIPBOARD DISPLAY CASES (mounts)

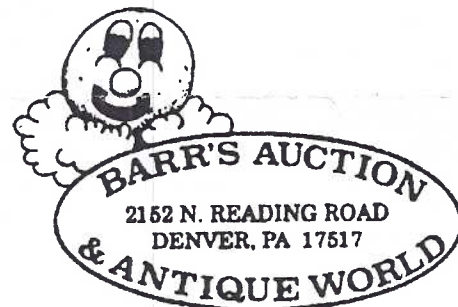
BLACK CHIPBOARD TRAYS W/FLOCK INSERTS (Red OR Black)

COMPLETE SUPPLY LIST AVAILABLE

HARRIS GRAY

P.O. BOX 246 • BROOKFIELD, MA 01506-0246 • 508-867-7210

John Klein Postcards



Exit 21
Pa. Turnpike

Saturday 10-5
Sunday 8-5

THE OTHER SIDE

Buglers' Bay in Scranton ?

A 5-card Message on Shamokin Cards

With some PC collectors it's a habit to read every message they find on the cards passing through their hands. Others of us feel it's an intrusion, albeit 70 years later, on the writer's privacy. But when you find a group of cards numbered by the writer and all to the same recipient, the compulsion is just too much.

This is copied from five PCs showing Edgewood Park in Shamokin, Pa. They were mailed from Scranton, about 75 miles away.



"Your cards received and thanks. Yes, I finished the book and think it is all right. I thank you for your generosity in sending it to me. I have never read Bad Hugh and as things are now I wouldn't have much time to read.

Mr. Lawrence, the Chief Musician of the 13th Regt. has made a teacher out of me. I am at present teaching two bugle corps which takes up four nights a week but pays me pretty fair. It will be a year before some of them will be able to play the trumpet at all. I often wonder if I was as noisy as they are when I was learning.

There are three young ladies that come to my home quite often and I wish you could hear the four of us

sound Retreat or Tattoo or play marches. I had six trumpets about a year ago and they are all loaned out but the one I use. The boys at the drug store call my home Buglers Bay.

We have three batteries of artillery up at Tobyhanna, a small town a few miles east of Scranton, having target practice. The government is considering about making it a permanent artillery post.

There is a book mark in with these cards. I got it at camp this summer but kept forgetting it and would have forgotten it this time if I didn't tell about the book. These cards are from Shamokin. The people down there

think this is a big park but I don't know what they would think if they saw Rocky Glen or Luna Park up here in Scranton. E.O."

Unfortunately, the correspondence is undated, but the divided back cards w/o borders would suggest the writer is serving in the armed forces of World War I. Two of the cards - the entrance to Edgewood and the lake, were published by Woolworth's. The two shown, as well as one of the pavilion, are by Albert M. Deichler, a Lancaster publisher.



See you at the May
meeting for a fine
program by our
member from the
Northumberland
...Joe Epler.

