

Welcome to the

# 9<sup>th</sup> ANNUAL POSTCARD EXPO

Sponsored by the Lancaster County Postcard Club  
Lancaster, Pennsylvania

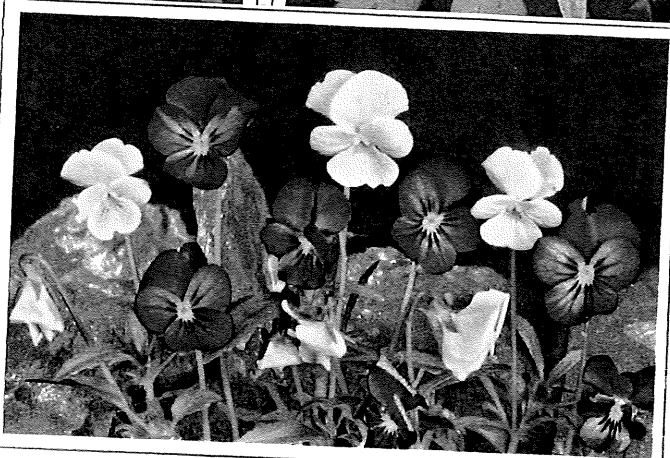
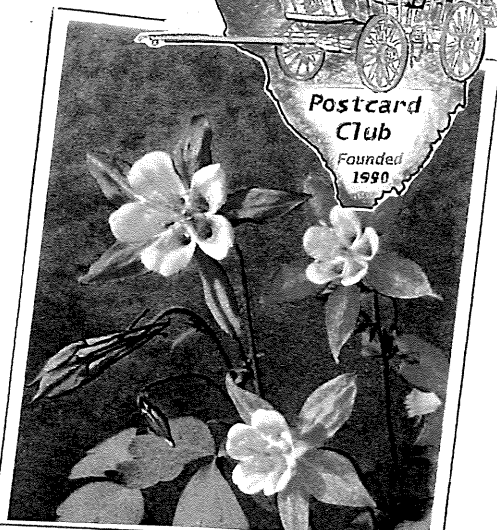
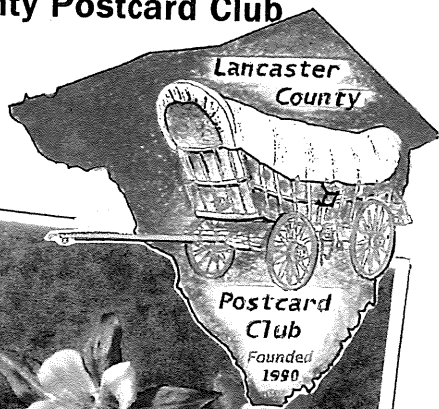
Saturday, 9 to 5

August 18, 2001

Farm & Home Center

Manheim Pike, Rte. 72

Near Rte. 30 By-pass



## 2001 LCPC Officers

Pres. Betty Beck

Vice. Pres. Tom Beck

Secy. Mary Ann Guntow

Treas. Barabra Mowrer

This year's Expo Program cover

is dedicated to Pres. Betty Beck

who becomes a Master Gardener this year.

## LCPC Directors

Bill Buckwalter 2000-2001

Jacob Fisher 2000-2001

Brian Frankhouser 2000-2001

Harold Moyer 2001-2002

Ruth Moyer 2001-2002

Jim Ward 2001-2002

# LCPC Member – Dealers

## Alphabetical Listing

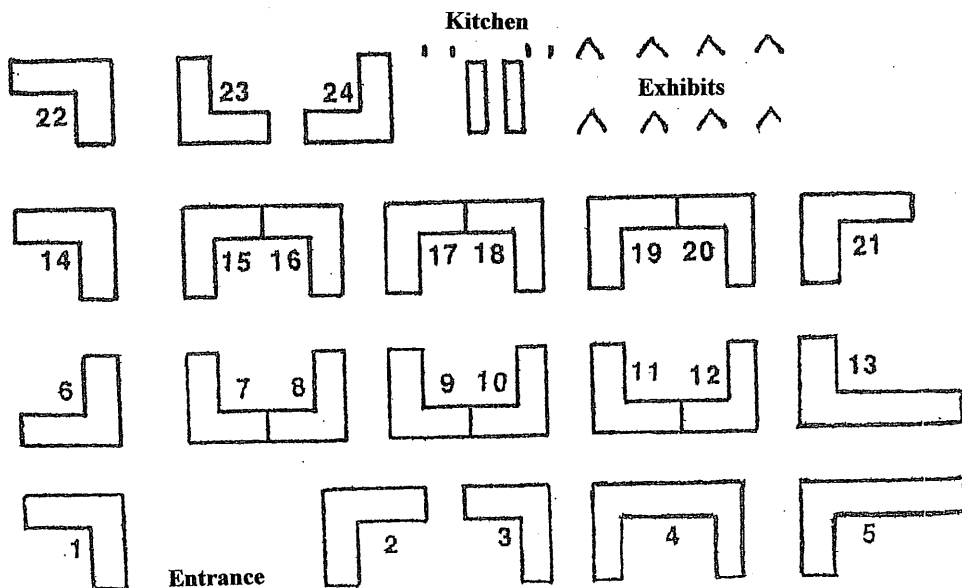
- 3 ALLEN, Daniel
- 20 BISHOP, Dick
- 23 CAVALARI, Agnes
- 4 COX, Lee and Shirley
- 17 FRANTZ, Leo and Helma
- 5 GOTTLIEB, Marilyn and Howie
- 2 GRAY, Harris and Jane
- 9 GREIDER, Jere
- 10 HARTMAN, Reuel
- 24 McKINZIE, Gordon
- 14 MIDDLETON, Mike
- 7 MILLER, Jay
- 13 MORRISON, Jim
- 18 NEWSOME, Arden and Bob
- 1 RODRIGUEZ, Jose and Aida
- 6 ROWE, Dolores and Leon
- 22 RUSSELL, Chris and Pam
- 16 SCHAEFFER, Dede
- 15 SCHURZ, Maria and Win
- 9 STEINBERG, Howard
- 11 STOVER, Leighton
- 21 TROVEI, Barbara
- 12 WACHTER, Don
- 8 WARD, Jim
- 19 WOLFERSBERGER, Bill

- Brookline, MA
- York, PA
- New Windsor, NY
- Keymar, MD
- Etters, PA
- Rock Hill, NY
- Brookfield, MA
- Mountville, PA
- Bloomsburg, PA
- York, PA
- New Holland, PA
- Philadelphia, PA
- Georgetown, MD
- Stroudsburg, PA
- Cheshire, CT
- Kennett Square, PA
- Winchester, NH
- Lancaster, PA
- Denver, PA
- Quarryville, PA
- Lititz, PA
- Port Jervis, NY
- Frederick, MD
- Stevens, PA
- Winchester, VA

## Numerical Listing

- 1 Jose Rodriguez
- 2 Harris Gray
- 3 Daniel Allen
- 4 Lee Cox
- 5 Marilyn Gottlieb
- 6 Dolores Rowe
- 7 Jay Miller
- 8 Jim Ward
- 9 Jere Greider
- 9 Howard Steinberg
- 10 Reuel Hartman
- 11 Leighton Stover
- 12 Don Wachter
- 13 Jim Morrison
- 14 Mike Middleton
- 15 Maria Schurz
- 16 Dede Schaeffer
- 17 Leo Frantz
- 18 Arden Newsome
- 19 Bill Wolfersberger
- 20 Dick Bishop
- 21 Barbara Trovei
- 22 Chris Russell
- 23 Agnes Cavallari
- 24 Gordon McKinzie

## Where You'll Find Them



**You're invited** to become a member of LCPC – the Lancaster County Postcard Club.

An application can be found on the back of this program.

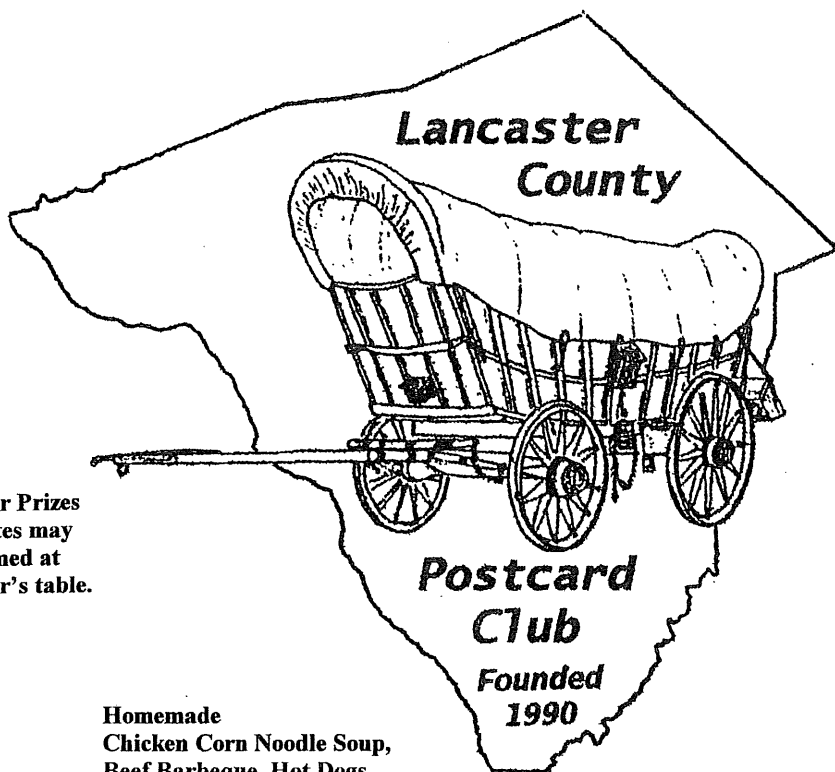
Our meetings are held the third Monday of each month from 5:30 to 9 p.m. here at the Farm & Home Center. They are open to the public. You may join us in sharing what we learn about postcards through our entertaining and educational programs and our club library.

We have competitive postcard exhibits at nearly every meeting. Highlights of the year include publishing a National Postcard Week card in spring, a picnic and our Annual Expo in summer, a postcard auction in the fall and an annual Christmas party.

Our monthly Publication, *The Card*, includes club news, local postcard history and articles covering postcard collecting in general.

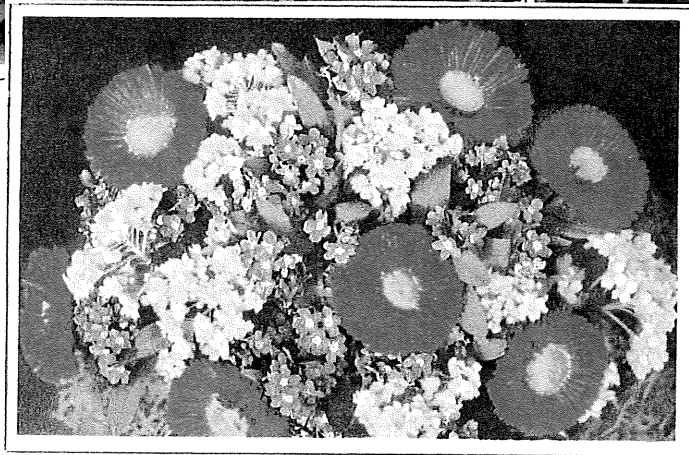
In 1998 our club published a hard cover deluxe edition book of 500 local postcard views with descriptions and values. *Windows to Our Past*, we've learned, is the first book of its size and substance to be published by a postcard club. The edition of 2,000 copies was sold out in five months. Copies are now selling at a premium.

LCPC has taken on the venture once more. The members are compiling a second volume of 500 different local postcards. A tentative date for publication of *Windows to Our Past, Volume Two* is at our Expo in August 2002. We hope to hold the price at \$30 – the same as Volume One, even though we'll have twice as many color postcards. Pre-publication orders will not be taken. Previous buyers will be contacted just prior to the release date. If you wish to be contacted, add your name to the list today.



Cash Door Prizes  
Certificates may  
be redeemed at  
any dealer's table.

Homemade  
Chicken Corn Noodle Soup,  
Beef Barbeque, Hot Dogs  
and Pies by the Moyers.



Flower postcards are by Stehli of Switzerland

Front cover: Ox-eyed daisy and campanula, hybrid columbines and violas

Back cover: Orange lilies, daffodils and bouquet of Easter daisies, forget-me-nots and massliebchen

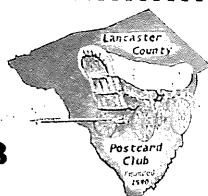
DATE .....

# Post Card

## LANCASTER COUNTY POSTCARD CLUB

MY POSTCARD COLLECTING  
INTERESTS ARE .....

### APPLICATION FOR MEMBERSHIP



.....  
.....  
.....  
.....  
.....

AMT. PAID.....DATE.....

ACCEPTED BY .....

NAME .....

ADDRESS .....

TOWN .....

STATE .....ZIP .....

PHONE .....

SPONSOR .....

Published by "L & W", Lancaster, PA