

Welcome to the

# 13<sup>th</sup> ANNUAL POSTCARD EXPO

Sponsored by the Lancaster County Postcard Club

Lancaster, Pennsylvania

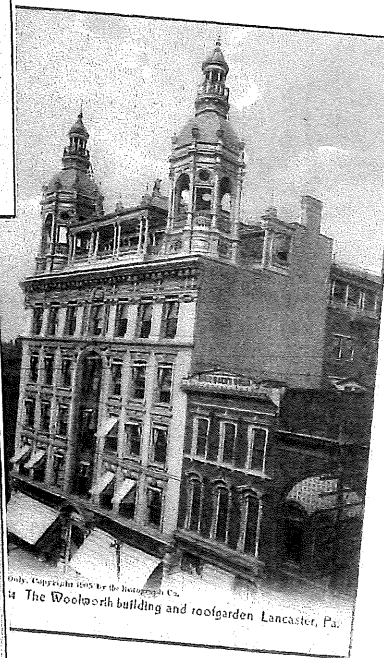
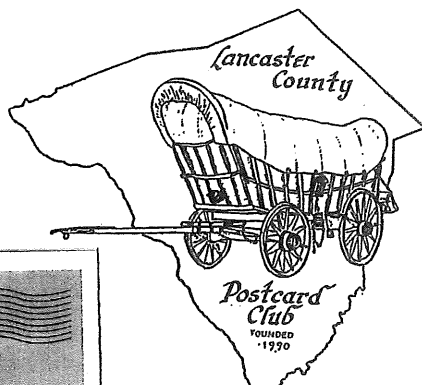
Saturday, 9 to 5

August 20, 2005

Farm & Home Center

Manheim Pike, Rte. 72

Near Rte. 30 By-pass



## 2005 LCPC Officers

Pres. Sharon Gromis

Vice. Pres. Dick Pendergrast

Secy. Gisela Withers

Treas. Barabra Mowrer

This year's Expo Program covers are dedicated to Pres. Sharon Gromis who likes, among other postcard subjects, local views.

## LCPC Directors

Harold Moyer 2004-2005

Ruth Moyer 2004-2005

Dede Schaeffer 2004-2005

Carol Giona 2005-2006

Jere Greider 2005-2006

Gisela Withers 2005-2006

# LCPC Member-Dealers at 2005 Expo

## Alphabetical Listing

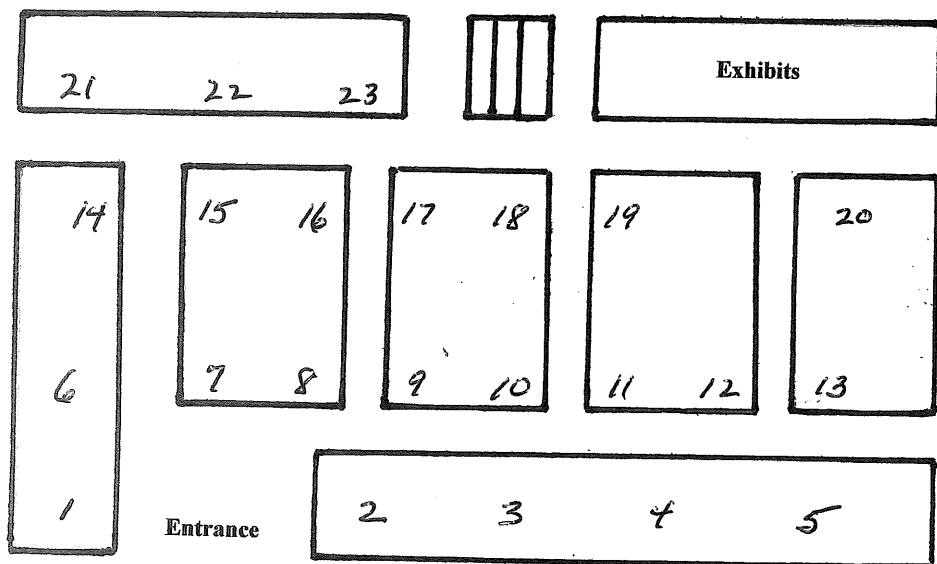
Biesecker, Dale and Gretchen  
 Clemens, Mark  
 Cox, Shirley  
 Dissinger, Bob  
 Dixon, Lee  
 Feight, Doris Kay  
 Gottlieb, Marilyn and Howie  
 Greider, Jere  
 Holloper, Bob  
 Knapp, Paul and Irene  
 Middleton, Mike  
 Morrison, Jim  
 Newsome, Bob  
 Rodriguez, Jose  
 Rowe, Dolores and Leon  
 Schaeffer, Dede  
 Schaub, Al  
 Schurz, Marie  
 Shaub, Dale  
 Steinberg, Howard  
 Stover, Leighton  
 Tigner, Jim  
 Trovei, Barbara  
 Wachter, Don  
 Ward, Jim

Cashtown, PA  
 Greensburg, PA  
 Keymar, MD  
 Falmouth, PA  
 Marydel, MD  
 Chambersburg, PD  
 Rock Hill, NY  
 Mountville, PA  
 Punxsutawney, PA  
 Olmsted Falls, OH  
 New Holland, PA  
 Georgetown, MD  
 Stroudsburg, PA  
 Cheshire, CT  
 Kennett Square, PA  
 Lancaster, PA  
 Lititz, PA  
 Denver, PA  
 Millersville, PA  
 Quarryville, PA  
 Lititz, PA  
 Fairfield, PA  
 Port Jervis, NY  
 Frederick, MD  
 Stevens, PA

## Numerical (Table) Listing

1 Rodriguez, Jose  
 2 Feight, Doris Kay  
 3 Schaub, Al  
 3 Shaub, Dale  
 4 Cox, Shirley  
 5 Gottlieb, Marilyn  
 6 Rowe, Dolores  
 7 Ward, Jim  
 8 Dissinger, Bob  
 9 Greider, Jere  
 9 Steinberg, Howard  
 10 Holloper, Bob  
 11 Stover, Leighton  
 12 Wachter, Don  
 13 Morrison, Jim  
 14 Middleton, Mike  
 15 Schurz, Maria  
 16 Schaeffer, Dede  
 17 Biesecker, Dale  
 18 Newsome, Bob  
 19 Dixon, Lee  
 20 Trovei, Barbara  
 21 Tigner, Jim  
 22 Knapp, Paul  
 23 Clemens, Mark

## Where You'll Find Them



**You're invited** to become a member of LCPC – the Lancaster County Postcard Club.

An application can be found on the back of this program.

Our meetings are held the third Monday of each month from 5:30 to 9 p.m. here at the Farm & Home Center. They are open to the public. You may join us in sharing what we learn about postcards through our entertaining and educational programs and our club library. We have competitive postcard exhibits at nearly every meeting.

#### **Dues – Special Expo Offer**

LCPC's fiscal year is April to March for which we charge \$10. Sign up at the Expo for a special rate of \$15. It pays your dues from Aug. 2005 through March 2007.

Our monthly publication, *The Card*, includes club news, local postcard history and articles covering postcard collecting in general. Ask for a complimentary copy

Highlights of the year include publishing a National Postcard Week card in spring, a picnic and our Annual Expo in summer, a postcard auction in the fall and our annual Christmas party.

#### **Windows to Our Past – Volume 2**

In 1998 our club published a hard cover deluxe edition book of 500 local postcard views with descriptions and values. *Windows to Our Past*, we've learned, is the first book of its size and substance to be published by a postcard club. The edition of 2,000 copies is sold out. Copies are now selling at a premium.

Four years later LCPC took up the venture once more. *Windows to Our Past, Volume Two*, made its debut at our 2002 Expo. It includes 520 views different from *Volume One* and we increased the color plates from 49 to 109 while holding the price at \$30 incl. sales tax! *Volume One* has been sold out for many years. They bring \$85 to \$100. Each volume was limited to a printing of 2,000 books. You might consider getting extra copies of *Volume Two* today. The books make wonderful gifts. Relatives and friends who've moved from Lancaster will certainly enjoy these old postcard views.

**Voting is a privilege.**

**Cast your exhibit ballot for  
The People's Choice Award.**

**Door Prize Certificates  
may be used as cash  
at any dealer's table.**

#### **Postcards on our program covers.**

Views on the front cover include two issued just this year. The Clipper Magazine Stadium arrived at the stadium's store just a month after opening day, May 11, 2005. Our president helps part-time in the store. The Nevin Fountain card marks the lion's 100<sup>th</sup> anniversary in Reservoir Park, opposite the Thaddeus Stevens College of Technology. We're all familiar with the F. W. Woolworth Store that once stood in the first block of North Queen Street.

Rocky Spring's 1930s linen card, The Wild Cat, has proven to be the most popular view in the park's history. The final two views play a part in Pres. Sharon's life. St. John's Episcopal in Lancaster is her church and the P.R.R. Telegraph Tower and Railroad House were once landmarks in Sharon's present hometown, Landisville.

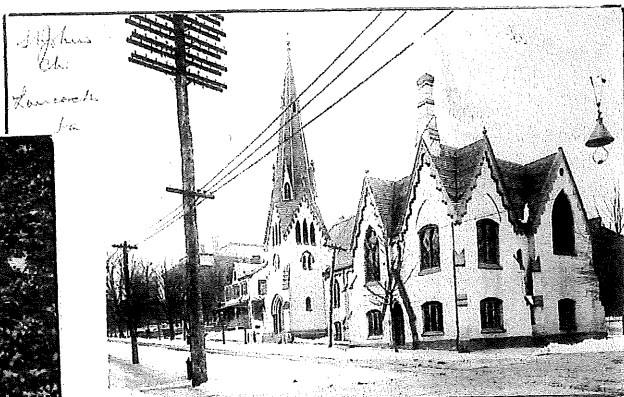
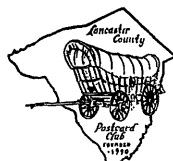


Photo D.B.L. 1900 P. R. R. TEL. TOWER AND RAILROAD HOUSE, LANDISVILLE, PA.

DATE .....

# Post Card

LANCASTER COUNTY POSTCARD CLUB



MY POSTCARD COLLECTING INTERESTS ARE .....

APPLICATION FOR MEMBERSHIP

.....  
 .....  
 .....  
 .....

AMT. PAID.....DATE.....

ACCEPTED BY .....

Published by "L & W", Lancaster, PA

NAME .....

ADDRESS.....

TOWN .....

STATE .....ZIP.....

PHONE .....

SPONSOR .....