

20th ANNUAL POSTCARD EXPO

Sponsored by the Lancaster County Postcard Club

Lancaster, Pennsylvania

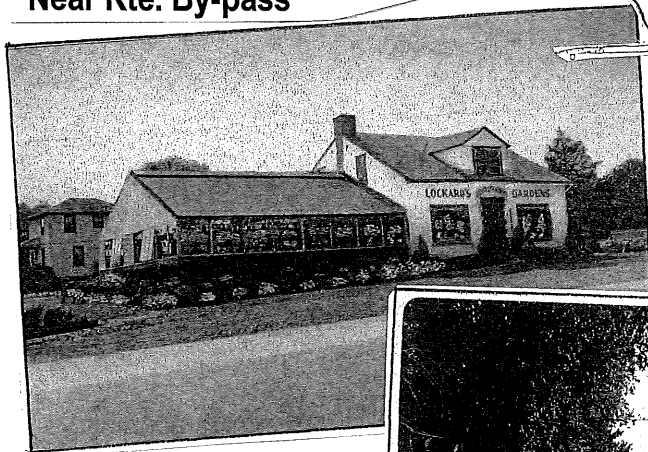
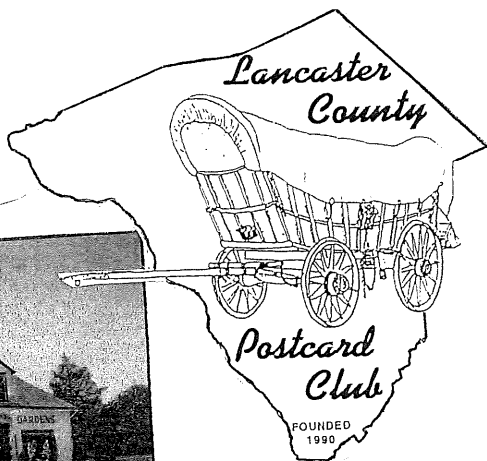
Saturday, 9 to 5

August 18, 2012

Farm & Home Center

Manheim Pike, Rte. 72

Near Rte. By-pass



2012 LCPC Officers

Pres. Bob Zink

Vice Pres. Mark Arbogast

Secy. Gisela Withers

Treas. Barabra Mowrer

This year's Expo program cover is dedicated to Pres. Bob Zink who collects postcards of Mountville, PA. These cards are all from Bob's hometown.

2012 LCPC Directors

Susan Glass 2011-2012

Dede Schaeffer 2011-2012

Al Schaub 2011-2012

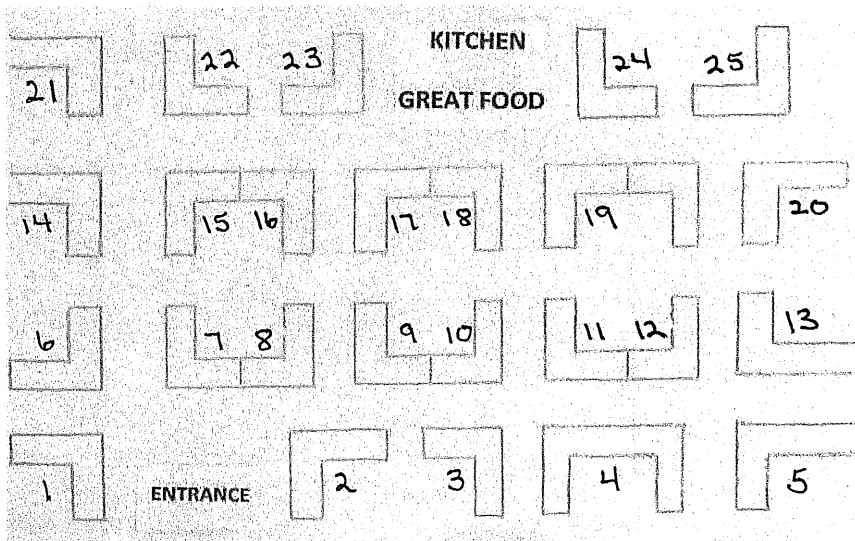
James Tanis 2012-2013

Walter Mowrer 2012-2013

Ruth Morer 2012-2013

20th ANNUAL LCPC POSTCARD EXPO DEALER LOCATIONS

5 Biesecker, Dale & Gretchen	Cashtown, PA
1 Cartophilians	Cheshire, CT
4 Cox, Shirley	Westminster, MD
23 Clemens, Mark	Greensburg, PA
10 Cohen, Stephen	Lumberville, PA
6 Collector's Rowe	Kennett Sq., PA
7 Dissinger, Bob	Bainbridge, PA
19 Dixon, Lee	Marydel, MD
22 Eastland, Jeff	Garrisonville, VA
2 Feight, Doris Kay	Chambersburg, PA
9 Greider, Jere	Columbia, PA
12 Halterman, Larry	Green Lane, PA
25 Heckler, Aaron	Salford, PA
20 Hollins Certificates	Springfield, VA
3 International Collectibles	Lititz, PA
16 Luty, Jim	Dillsburg, PA
17 Miller, Bill	Grantville, PA
18 Postcard Images	Gray, ME
8 Schaeffer, DeDe	Lancaster, PA
15 Schurz, Maria & Win	Denver, PA
24 Schwartz, Mike & Wile, Louise	Morrisville, PA
9 Steinberg, Howard	Quarryville, PA
11 Stover, Leighton	Lititz, PA
14 Tannis, James	Audubon, PA
21 Tigner, James	Fairfield, PA
13 Tom's Stamps	Butler, PA



YOU'RE INVITED TO BECOME A MEMBER OF LCPC. LANCASTER COUNTY POSTCARD CLUB.

SPECIAL EXPO OFFER FOR NEW MEMBERS

**New members can join LCPC for 19 months, Sept. 2012 through March 2013.
Special Expo offer of \$15.00. (Plus \$5.00 for additional member at same address.)
LCPC's fiscal year is April to March. Annual dues are \$15.00 per member.
Application can be found below.**


Our meetings are held the third Monday of each month from 5 to 9 pm here at the Farm & Home Center. They are open to the public. You're welcome to join us in sharing what we learn about postcards through our entertaining and educational programs. We also have friendly competitive postcard exhibits at each meeting. At least half a dozen members buy and sell postcards at all meetings. Our annual picnic is held in July away from the Farm & Home Center. We have no meeting in August. We have a Christmas party in December, at this party we do not buy or sell postcards.

**VOLUME TWO WINDOWS TO OUR PAST HARD COVER BOOK OF LOCAL POSTCARD VIEWS IS
NOW ON SALE FOR \$10.00. THEY MAKE GREAT GIFTS. BUY YOURS TODAY.**

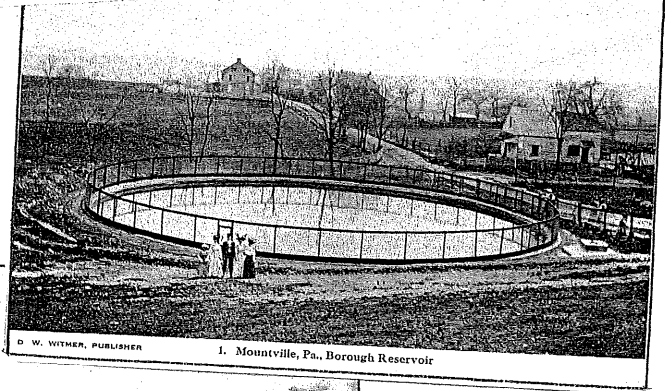
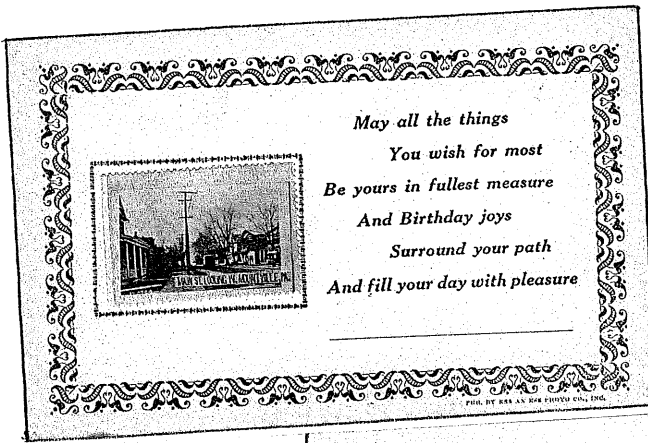
**LCPC MEMBERS PUT A LOT OF WORK INTO THEIR POSTCARD DISPLAYS. MAKE SURE YOU
TAKE TIME TO LOOK AT THE DISPLAYS AND CAST YOUR BALLOT FOR THE PEOPLE'S CHOICE
AWARD.**

**IF YOU HAVE ANY QUESTIONS OR COMMENTS ABOUT THE CLUB OR EXPO PLEASE TALK TO ONE OF
OUR MEMBERS AT THE CLUB TABLE.**

GOOD FOOD IS AVAILABLE ALL DAY LONG.

DATE		Post Card			
LANCASTER COUNTY POSTCARD CLUB					
MY POSTCARD COLLECTING INTERESTS ARE		APPLICATION FOR MEMBERSHIP			
.....		NAME			
.....		ADDRESS			
.....		TOWN			
.....		STATE ZIP			
AMT. PAID..... DATE.....		PHONE			
ACCEPTED BY		SPONSOR			

Published by "L & W" Lancaster, PA



Front cover cards – Lockard's Gardens was on the Lincoln Hwy. east of town from 1939 to 1976. It eventually specialized in dahlias. A real photo view of Main St. shows the two pairs of trolley tracks carrying passengers from Columbia and Marietta to Lancaster. The Mountville P. O. view was printed for D. W. Witmer by Express Printing Co., Lititz. In the 1970's and 1980's it was known as "Gramp's Store."

Back cover cards – Last year we showed the set of six Mountville views produced by the Ess and Ess Co. Above is an example of how they could be attached to the company's greeting card with a line for the sender's name. The reservoir on a hill high above town was soon covered with a concrete cap. No longer needed, it has since been filled in. Quality clay bricks were made at the Mountville Brick Co. It operated from 1905 to 1938.