



North Museum Donation Pg.-3

# Philatelic Society of Lancaster County



The James Buchanan Chapter (#173) of the  
American Philatelic Society  
American Topical Assn., Chapter 118  
Member, NY Federation of Stamp Clubs

**2019 Dues are Due  
Renewal on Pg.-2**

**Auction Preview starts at 6:30 pm, Wednesday, 9 January 2019**

Short Business meeting at 7:00 pm; Auction follows thereafter

Tony Coccio, Host; Doug Milliken, Greeter

## The Veranda Chronicles

It is with great satisfaction that the Officers and I accept your vote of confidence to lead the Philatelic Society of Lancaster County for another year. We will continue to strive to deliver great programming with lectures, auctions and bourse; our annual Stamp Show & Exhibition, and of course an enduring camaraderie that brings us back for more, year after year.

I would like to share with you that the PSLC Relocation Committee has been busy this past month looking to identify a 2019 venue to accommodate our monthly meetings while the Bluebird Commons at Woodcrest Villa undergoes major renovation. I thought it beneficial to share with all that the Society has specifications that need to be met for the benefit of our members, guests and speakers.

They are as follows: 1) the meeting needs to occur on the second Wednesday of each month, as we have already committed to lec-

tures and speakers; 2) the meeting needs to occur at our standard time, with arrival/set up at ~6:30 pm to closing/breakdown at ~9:30 pm; 3) the meeting location needs to be consistent with a guarantee of the same room, facility location and security; 4) the meeting location requires audio-visual equipment; 5) the meeting location requires ample space within the room for members, with tables for auction and bourse; 6) the meeting location requires a kitchenette for preparation/clean-up of food & beverages; and 7) the meeting location needs to be easily accessible from the main arteries with ample, free parking close to the venue and ease of access to the meeting place.

I am pleased to announce that after much consideration, including site visits to seven locations, and a review of our specifications with deliberations, a majority vote of confidence from our leadership was obtained. The new location identified that suits all of our

needs is the Landis Homes on 1001 East Oregon Road, Lititz, PA, and we will start off the New Year on January 9 with our Winter Auction.

Landis Homes is 8.9 miles (~15 minutes) from Woodcrest Villa. The facility is the Crossings Meeting Room. This facility is just inside the main entrance on Oregon Road, with very easy admittance, and parking is just outside and easily accessible. There is an elevator to the second floor. It has state-of-the-art audio-visuals with two large screens in the front of the room. There are nested rolling tables in a closet allowing for more if needed. There are kitchen facilities. We are communicating this to our members and friends via the PSLC Newsletter, an E-mail blast, the Society website<sup>1</sup>, local periodicals, and our Facebook page. We are looking forward to seeing you for what will surely be a very rewarding 2019. *CDi*

<sup>1</sup><http://www.lcps-stamps.org>

## Winter Auction at Landis Homes Tonight

Yes, you read correctly. PSLC is moving, but only for a year. **Lucy Eyster** reported in November that Bluebird would be closed for 2019 for repairs but that Woodcrest would find us another room. They did, but not on the second Wednesday! We learned of this at Thanksgiving. Changing the venue is less stressful than changing the date from the second Wednesday.

The "Relocation Committee" was diligent, and **Fred Sargent** worked with our people and those at **Landis Homes** to bring this about.

There were other options, but room size, parking, consistency of meeting site, and 8:00 pm exit times were all problematic. Landis Homes fit our needs. It has a



kitchen, audio-visual capacity, two big screens, and plenty of tables and chairs. Pictured at the left are **Lou DiFelice** and **Fred Sargent** in the kitchen side of the meeting room.

Landis Homes is located at 1001 East Oregon Road (Route 722), Lititz, PA 17543. Their website is [www.landishomes.org](http://www.landishomes.org).

On page-2 are the following:

1) Directions to Landis Homes  
2) Auction information addressing allotments, paddle numbers, starting bids, payment, and more.

**Volume 82, No. 1**

**January 2019**

**Visitors are Always  
Welcome**

PSLC meets the 2<sup>nd</sup> Wednesday of the month (except August) at the Crossings Meeting Room, Landis Homes, 1001 East Oregon Road, Lititz, PA 17543 at 7:00 pm. Dues are \$10.00 a year. For club information call Paul Petersen at 717-299-5640

*Website: LCPs-Stamps.org*

**PSLC Officers and Board**

**President, Web Developer & Designer:**

Charles DiComo, 914-450-3791  
[charlesdicomo@gmail.com](mailto:charlesdicomo@gmail.com)

**1<sup>st</sup> Vice President:**

John Hostetter, 717-394-9626  
[jhostetterjr@gmail.com](mailto:jhostetterjr@gmail.com)

**2<sup>nd</sup> Vice President:**

Bill Greiner, III, 717-471-2354  
[sunfighter@verizon.net](mailto:sunfighter@verizon.net)

**Secretary:**

Diane Meek, 717-575-5533  
[dimeek111@gmail.com](mailto:dimeek111@gmail.com)

**Treasurer:**

Lou DiFelice, 717-572-3419  
[louidifelice@gmail.com](mailto:louidifelice@gmail.com)

**Past President:**

Douglas Milliken, 717-330-4062  
[dmilliken@me.com](mailto:dmilliken@me.com)

**Publicity:**

Len Kasper, 717-723-1864  
[hotrodparts33@aol.com](mailto:hotrodparts33@aol.com)

**Membership:**

Barb Buchanan, 717-871-0244  
[tallwood@comcast.net](mailto:tallwood@comcast.net)

**Newsletter Editor:**

Programs, and APS Rep:  
Paul Petersen, 717-299-5640

**Gifts Appreciated**

Many thanks to all of you who donated stamp packets and covers to The North Museum, The American Topical Association, and The American Philatelic Society.

## Bosnian Philately

Bob Witkosky

(Ed's Note: Often referred to as 'Bosnia Bob,' Bob Witkosky will be speaking next month on one of his areas of expertise, Bosnian Philately. To whet your appetite, he has written a short intro to his topic to be followed by greater detail in the February Newsletter.)

This brief article is being written to give the members of the Philatelic Society of Lancaster County a basis of reference for my planned 14 February 2019 presentation entitled "An Overview of Bosnian Philately 1879 – 1918".

Beginning on 29 July 1878, the Austrian Army established a military postal system in Bosnia – Herzegovina (Bosnia for short). Originally, it was designed for use by the military, but by 1879, it had expanded for civilian use as well. In 1879, the first stamps of Bosnia were issued.



Over the next 39 years, many new issues were created for use in Bosnia. All stamps were printed by the National Print Works in Vienna. Of all of the stamps issued, the most popular was the set of 16 stamps referred to as the "1906 Views Issue". What made this set so popular, in addition to the beautiful scenes depicted, were the many perforation varieties that were available to the collector. Although there are only 16 stamps in the set, to have examples of all values in all perforation varieties, you would need 2272 different stamps! No complete sets of this issue are currently known today.

You will have an opportunity to view some interesting perforation combinations as part of this upcoming presentation. If you have any of the compound perforation examples in your collection of Bosnian stamps, please bring them to the meeting! I, as well as your fellow Club members would love to see them. Looking forward to seeing all of you in February (if not sooner).

## Directions To Landis Homes

Landis Homes is located at 1001 East Oregon Road, also known as Route 722. Rt.-722 runs in a somewhat East-West direction between the Lititz Pike (Rt.-501) and the Oregon Pike (Rt.-272). You can easily reach this facility from any direction.



**From the North or the South via Lititz Pike:** Take Lititz Pike (Rt.-501) toward Neffsville. Just 0.3-0.4 miles north of Neffsville is a traffic light at East Oregon Road (Rt.-722). Turn east, and it is two

miles to Landis Homes, which is on the south side.

**From the North or South via Rt. 222:** Take exit for Oregon Pike (Rt.-272). At Oregon Pike, turn north for 0.3 miles. Turn left on Creek Road for 0.3 miles, and then right on East Oregon Road. Landis Homes is about 0.8 miles on the left or south side.

**To the Meeting Room:** Off Oregon Road there are three labeled entrances to Landis Homes: (1) East; (2) West Entrance; and (3) middle or Main Entrance. Enter here at the Main Entrance. The large building right in front of you is the Calvin and Janet High Learning and Wellness Center. Park here. The **Crossings Meeting Room** is on the second deck of this building, and there is an elevator that you can take up one floor.

## Auction: A time to buy 'n a time to sell

We are grateful for our new facility at Landis Homes. The Auction Committee will be adjusting to these new surroundings, so please be very kind to them.

**Instructions:** ☐ You'll receive a numbered paddle when you arrive. Place this number on all your items to be auctioned, and use this paddle during the auction when you are bidding. This will insure that what you buy and what you sell are accurately credited and debited. ☐ Be sure that all your lots are accompanied by an accurate and detailed description, as this helps buyers to better understand what they are looking at. ☐ Auction lot description forms have already been emailed, and hard copies will be available. You may also access this on the website at any time. ☐ Fiscal transactions will only be

made after the last lot has been sold.

The Auction Committee recommends that you: ☐ Bring cash to pay for the items you win and ☐ Keep a running total during the auction of the items and prices of the lots you sell and win. ☐ Finally, please attach your sales information securely to the lots you are entering into the auction. This will help avoid any misidentification with other sellers' lots.

**Bidding Rules:** ☐ Minimum bids are \$1.00 per lot. ☐ The minimum bidding increment is 50¢. ☐ Only dues-paying members may participate in the auction. ☐ Auction participants are limited to ten (10) lots. ☐ You may also donate items to the club with the realizations going to the benefit of the PSLC. Donations are always appreciated.

## Club Notes

## Programs, Hosts, Shows, and Events

## 2019 Programs

**9 January:** Club Auction. Tony Coccio, Host

**13 February:** An Overview of Bosnian Philately: 1879-1918, Robert Witkosky. Host: TBA

**13 March:** The NY Postmaster Provisional Stamp of 1845. Mark Schwartz

**10 April:** The Joys of Philately. Bill Schultz

**8 May:** The History of Printing on Stamps. Joseph Sullivan

**12 June:** Club Auction

**10 July:** Making Philatelic Donations. Richard Nakles

**14 August:** Club Picnic: Freedom Memorial Park, Millersville, PA

**11 September:** Club Auction

**9 October:** The Development of Perforations on U.S. Postage Stamps, 1855-1857. Dr. Charles DiComo

**13 November:** Open House and One-Page Exhibits, Len Kasper and Paul Petersen

**December:** December Dinner, Deb Ehleiter & Co. (Date to be determined.)

## 2020 Programs

**8 January:** Club Auction.

**13 May:** Canada's Role in Union & Confederate Postal Cross-Border Mail during the U.S. Civil War, Ron Majors

## 19 Shows/Events

**York Stamp Show:** 25-26 January, '19. York Fair Grounds. Ride Sharing? Call P. Petersen.

**DELPEX:** Saturday, 13 April '19, Nur Shine Center, 198 South Dupont Highway, New Castle, Delaware

☒ ✂.....

Please clip this dues notice, complete it, and turn in to Barb Buchanan at the next meeting with \$10.00. You may also send it to her at PO Box 116, Conestoga, PA 17516-0116

Name: \_\_\_\_\_ Phone: \_\_\_\_\_

Email Address: \_\_\_\_\_

ATA Member ☐

APS Member ☐

Please check the appropriate ATA/APS box(s) if you are a paid up member.

☒ Make checks payable to Philatelic Society of Lancaster County.



## PSLC Snaps

→ Meet the PSLC 2019 Officers



Left to right: **Wm. Greiner, III**, (2<sup>nd</sup> VP); **Dr. DiComo** (President) **Lou DiFelice** (Treasurer) and **John Hostetter** (1<sup>st</sup> VP). Missing from Photo-Diane Meek (Treasurer).

→ 2018 Dinner Committee



Left to right: **Sarah Mylin**, **Deb Ehleiter** (Chair), **Lucy Eyster**, and **Lou DiFelice**. Missing from Photo-Paul Petersen (Behind the camera)

→ 16 December Some Sunday Show



Checking out covers are the following PSLC members: **Left to right-Scott Ney**, **Bob Witkosky**, **Robert Kramer**, and **Lou DiFelice**.

→ Science Basket Donation to PSLC From North Museum Leadership



## 2018 December Dinner Overview

The 2018 December Dinner was very successful. The recent change in venue from the Viva Center to The Garden Cafe worked out well in our favor in savings to PSLC with our smaller crowd of 45.



At each place setting was the evening's program and menu. Favors from the Dinner Committee included the ATA Checklist for **Cranberries on Stamps** (↑) and a USPS souvenir sheet of this year's Santa Claus stamp, the one with the labeled coke bottle in the selvedge. (↓)



The menu and choice of three entrees was as outstanding as the service, and folks are already talking about next year. 2018 entertainment was something new, the reading of the contents from among covers that we have accumulated, some containing letters. These turned out to be poignant, interesting, and in a few cases, very funny. In addition, we had two last minute donations to add to the festivities.



**David Hunt** read an (↑) 1859 letter from a young student at the Westtown School in West Chester, PA. He was about ten and conveyed all about his life at the Quaker school (at the time) ranging from the boredom to his favorite activities and academic subjects.

**Mike Bach** had a 1911 postcard mailed on one of the first air-mail flights in England. Revealing some of, perhaps the com-

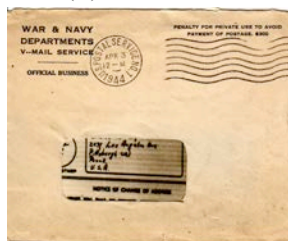
mon thinking at the time, the writer hoped that this mode of mail transport to his people in Canada would be faster than that conveyed by the *Lusitania*! (↓)



**Dennis Shumaker** had two U.S. Civil War letters, one funny and the other quite sad. In the first the writer described the train ride among drinking family members and the antics that occurred. The second letter was a black bordered mourning cover, conveying with sadness the recent death of a loved one.

**Mike Marino** had a few letters including an 1833 item describing a ride on the Erie Canal in central NY. The second letter was from an American WWII soldier in Germany just before the end of the war. He explained their occupation of a castle, which they had just recently liberated.

**Paul Petersen** read a one-liner V-mail from overseas asking his friend to sober up enough to write a letter. (↓)



His second letter was supposedly from the 7<sup>th</sup> grade advisor to the DiComo family regarding their son's academic and extracurricular progress during 1978-1979.

**Jim Ziogas** came across the program & menu for the Third Annual Banquet of the Lancaster Stamp Club in 1934. For \$1.50 was all the turkey, green string beans, mashed potatoes, and gravy one could eat.

**Door Prizes:** Similar to gift exchanges at our past events, this had a little different twist. Those wishing to participate and receive a door-prize ticket had to donate an unwrapped philatelic or non-philatelic item with a signed gift-tag. During the evening, members were able browse the table to see what was available.

It almost worked! At the end we had one more ticket-holder than gifts. But this member will be well compensated at a future meeting. The activity was popular and will be considered again for next year.

There were two last-minute contributions to the festivities.

♦ **Wine Auction:** **Mike Marino** donated a bottle of *Pinot Gris* of the Willamette Valley. More strikingly, the bottle contained a beautifully etched image of a postage stamp, a stamp that we will call PSLC #1. Mike declared this the official wine of our club, and he auctioned it for the benefit of our treasury. After some fierce competition, the winner was **Dr. Charles DiComo**. Congrats Charlie, and many thanks, Mike, for this thoughtful donation.



♦ The second was also a late donation by the leadership of the **North Museum of Nature & Science**, where PSLC is creating a philatelic presence to the museum's education and exhibits. This was a large wrapped gift basket with over 20 items from their gift shop with the addition of four admission tickets. A few of these creative gifts included Astronaut Ice Cream, Snake Stickers, a Dino Egg, a Squeeze Robot, and many more.

Everyone had a ticket, but there was only one winner, **Deb Ehleiter**. Congrats, Deb. What fun for the grandkids! And thank-you, North Museum.



**Finale:** The final event was the last of the door prizes. It was announced that everyone check their evening's program for a sticker. There was one at each table. The committee selected ceramic angels this year as the prize for each diner who had the sticker on their program.

*This is a Special Feature article published for the Philatelic Society of Lancaster County (PSLC) Newsletter.*

### **An 1845 “Ship Letter” from Port-au-Prince, Hispaniola to New York City on the Brig *Hayti*.**

By Charles J. DiComo, PhD

I recently acquired a stampless folded letter (SFL) for my research studies on “Ship Letters”; those letters from foreign (or domestic ports) which travelled over water routes (which had not been designated post roads) by ships or other vessels having no mail contracts. The law required the ship’s Captain to deposit such letters in the Post Office where he first made port. For this service, the Captain was entitled to a 2¢ fee per letter provided the ship was not foreign-owned. This fee was added to the postage, whether it was paid to the ship’s Captain or not. The rate for each ship letter received at the port of entry was 6¢ if it was delivered at the port of entry. If it was addressed to a point beyond the port of entry the rate was 2¢ plus the normal inland postage from port of entry to destination or place addressed. The 2¢ and 6¢ charges were regardless of weight.

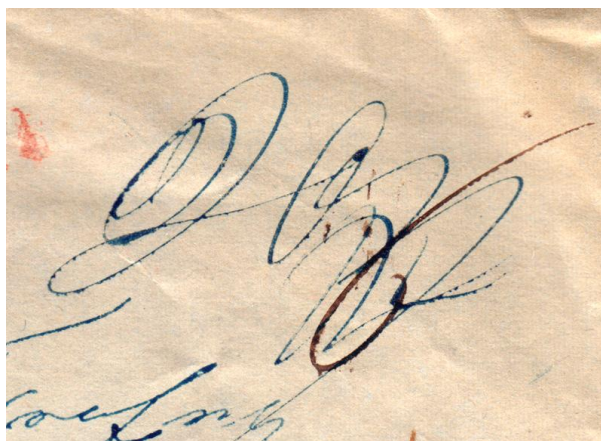
Figure 1 illustrates the obverse of the SFL written by Thomas Trefry on Sunday 4 May 1845 from Port-au-Prince, Hispaniola (the Caribbean island of the Greater Antilles; today’s Haiti and Dominican Republic). The letter is addressed to his wife in Marblehead, Massachusetts (MA); the contents of which shall be examined and discussed later in this article. Due to the lack of a Port-au-Prince circular date stamp, the letter did not enter the mails in that city, but was placed in a pouch and given to the Captain of a Brig sailing for New York City (NYC).



**Figure 1.** 1845 “Ship Letter” from Port-au-Prince, Hispaniola to Marblehead, MA. Letter entered mails at NYC, where red “NEW-YORK MAY 15” CDS and matching “SHIP” handstamp were applied.

Thomas was aware of the U.S. inland postage rates and Ship Letter fee, and in the same hand and blue ink as the address, wrote the postage due marking “20½” at upper right; which is equivalent to 18½¢ U.S. inland postage to Marblehead, MA (for >150 miles) plus a 2¢ incoming Ship fee (Figure 2).





**Figure 2.** Manuscript Rate Markings: in blue ink, “20½” (18½¢ U.S. inland postage to Marblehead, MA [for >150 miles] + 2¢ incoming Ship fee). In black ink, “6” to the right and overlapping the “20½”.

After an eleven day sailing through the Caribbean Sea and northward along the Atlantic coast, the vessel arrived in New York harbor, where the Captain took any mail he carried to the Post Office as his first action. He was paid 2¢ for each letter carried. A New York postal clerk marked the letter with the red “**NEW-YORK MAY 15**” circular date stamp (CDS) and matching red “**SHIP**” handstamp (Figure 3), indicating an incoming ship letter. Interestingly, there is also a manuscript “6” in black ink at upper right written on top of the blue “20½” (Figure 2). It is likely that the postal clerk thought New York was the final destination and in error rated the SFL “6” as per regulations.



**Figure 3.** At left, a crisp strike of the red 31 mm “**NEW-YORK MAY 15**” CDS. At right and enlarged, matching red 18x5 mm “**SHIP**” handstamp applied at same time by the postal clerk upon arrival in NYC.

Figure 4 illustrates the original letter, cropped from the much larger single sheet of bluish, unwatermarked paper, measuring 255x400 mm. At the upper left is an embossed paper manufacturer’s seal which reads “*Hubbard’s Norwich*,” with an Eagle and Shield in the center (Figure 5). In 1818, Amos H. Hubbard founded the Hubbard’s Paper Mill below the Yantic Falls in Norwich, Connecticut. Of note, in 1829 he placed and operated the first Fourdrinier machine made in America. This used a moving woven mesh to create a continuous paper web by filtering out the fibers in a paper stock. It produced a continuously moving wet mat of fiber which was dried to produce a strong paper. Previously, paper had been made by hand, one sheet at a time.

Port-au-Prince  
 Sunday May the 4 1845  
 Dear wife this is to inform you  
 that I am well hoping that you  
 and all the family are the same  
 who arrived at New-York in twenty  
 days and were ordered to Port-au-Prince  
 and I suppose that you shall be ready  
 to sail for home by the 30 of next  
 time will not allow me to write  
 any more at present for the Brig  
 Master of New-York is out on the  
 point of sailing this letter  
 comes by the Brig Master of  
 New-York - your husband  
 Thomas Taylor

Figure 4. Digital scan of the original letter, dated Sunday May the 4 1845 from Port-au-Prince.



Figure 5. Paper manufacturer Hubbard's of Norwich, CT with Eagle and Shield embossed seal.



Let us next analyze his words to his wife. We find that Thomas had distinctive penmanship and a commonplace writing style. There is also a lack of punctuation, making his communiqué one long run-on sentence. Additionally, he made more than a few spelling errors (“wright” for “write”, “Gist” for “just”; “whe” for “we”, “his” for “is”, etc.). Finally, the letter “p” resembles an “f”; the “r” an “n” or “v”; the letters “y” and “g” are nearly identical, as are the “a” and “u”. This made deciphering the contents of the letter more difficult than usual, but I do like a challenge. What follows is a literal translation:

Port un princ [sic]

- - - - -

Sunday May the 4 1845

- - - - -

Dear wifer [sic] this his [sic] to inform you that i [sic] are [sic] well hoping that you and all the family are the same Whe [sic] arrived at mirragone [sic] in twenty days and were ordered to port u prince and i [sic] suppose that whe [sic] shall be ready to Sail for home by the 20 of May Time will not allow me to wright [sic] any more at present for the Brig [Xxxxx] of new york is Gist [sic] on the point of Sailing this Letter comes by the Brig [Xxxxx] of new york =

your L husbun [sic]

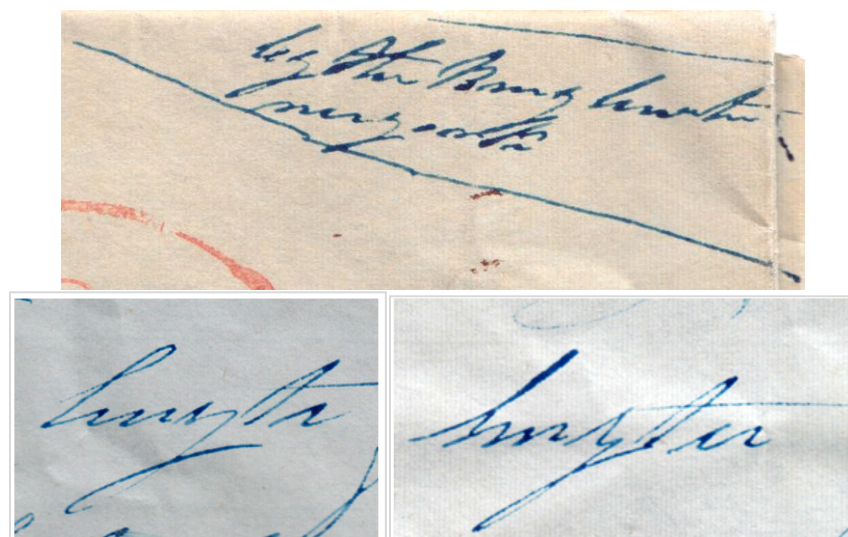
Thomas Trefry---

Thomas' letter is brief; he is letting his wife know he is well after his voyage to Hispaniola and hopes that she and the family are the same. On line 2 he refers to arriving at “mirragone” in twenty days, which I believe is his attempt to spell the port town of Miragoane, which is 100 km west of Port-au-Prince and was one of the major ports of trade on the island. He later mentions he was ordered to Port-au-Prince, from where he penned and eventually mailed this letter.

So who was Thomas Trefry and why was he in Hispaniola? The Trefry's of Marblehead, Massachusetts had a long history of being a seafaring family. My research identified a Thomas Trefry born 19 Oct. 1794, the son of William and Mary Thompson Trefry.<sup>1</sup> On 27 Aug. 1824, he married Sarah (Sally) Proctor (Procter) (b. in Marblehead 24 May 1801), the daughter of William Proctor Jr. and Deborah Goss. They had at least two children, Sarah (b. 10 Sept. 1830) and Thomas Jr. (b. 11 Jun. 1825), who was a Civil War soldier.

Captain Trefry was master or mate aboard a number of schooners engaged in the West Indies trade. These included the schooners *Alciope* (92 tons, built Amesbury, MA 1835), *Brilliant* (73 tons, built Newbury, MA 1831), *Combine* (100 tons, built Scituate, MA 1820), *Echo* (70 tons, built Kingston, MA 1819), and *Splendid* (98 tons, built Hollis, ME 1832).<sup>2</sup> This is most likely our Thomas Trefry who was engaged in trade in Hispaniola writing to his wife Sarah, assuring her that he was well and that he would be sailing home soon. It is not surprising then that he knew the Ship Letter fee and U.S. internal postage rates home and marked up his SFL in his own hand. Moreover, Thomas surely knew the Captains of other vessels making regular trips to and from the West Indies from the United States. But which Captain, and which vessel?

On the letter obverse, in the lower left corner, is an inverted notation or docketing, which is shown right-side up in Figure 6 at top. It is in the same hand and blue ink as the address, postage rate and contents and surely must be Thomas'. It reads “by the Brig [Xxxxx] new york”. While the vessel name cannot be deciphered from this entry, Thomas also mentions in the body of the letter on lines 12 and 14 that the SFL shall be sent by a Brig to New York (Figure 6, bottom). Even with these two other instances, I still found the Brig difficult to decipher; though I was fairly confident the last three letters were “yti” based on analysis of other words and letters. So where to turn next?



**Figure 6.** At top: docketing on the obverse of letter at lower left reading "by the Brig [Xxxxx] new york".  
At bottom: enlargements of the two mentions in the letter of a Brig [Xxxxx] of New York.

As you recall, after an eleven day journey the vessel arrived in New York Harbor and the Captain took any mail he carried to the Post Office as his first action. The postal clerk then marked the letter with the red "NEW-YORK MAY 15" CDS and red "SHIP" handstamp (Figure 3) and sent the SFL on its way to Marblehead, MA. Therefore, 15 May 1845 was the most likely date of arrival of our unnamed Brig that sailed from Port-au-Prince to NYC.

I subsequently turned to an invaluable database, the National Archive's *Passenger Lists of Vessels Arriving at New York, 1820-1897*.<sup>3</sup> This free online archive allows one to easily search through thousands of digitized microfilm records of original manifests designating vessels arriving at the Port of New York. After selecting the micropublication M237, Roll 57 hyperlink covering the period from 2 Jan 1845–31 May 1845, I was able to quickly scan the database and locate the vessels that arrived on 15 May.

# DISTRICT OF NEW-YORK—PORT OF NEW-YORK.

I, Oliver Cutts, do solemnly, sincerely, and truly swear that the following List or Manifest of Passengers, subscribed with my name, and now delivered by me to the Collector of the Customs for the District of New-York, contains, to the best of my knowledge and belief, a just and true account of the Passengers received on board the Brig Hayti, whereof I am Master, from Port au Prince.

Sworn to this 15 May, 1845, So help me God, Oliver Cutts

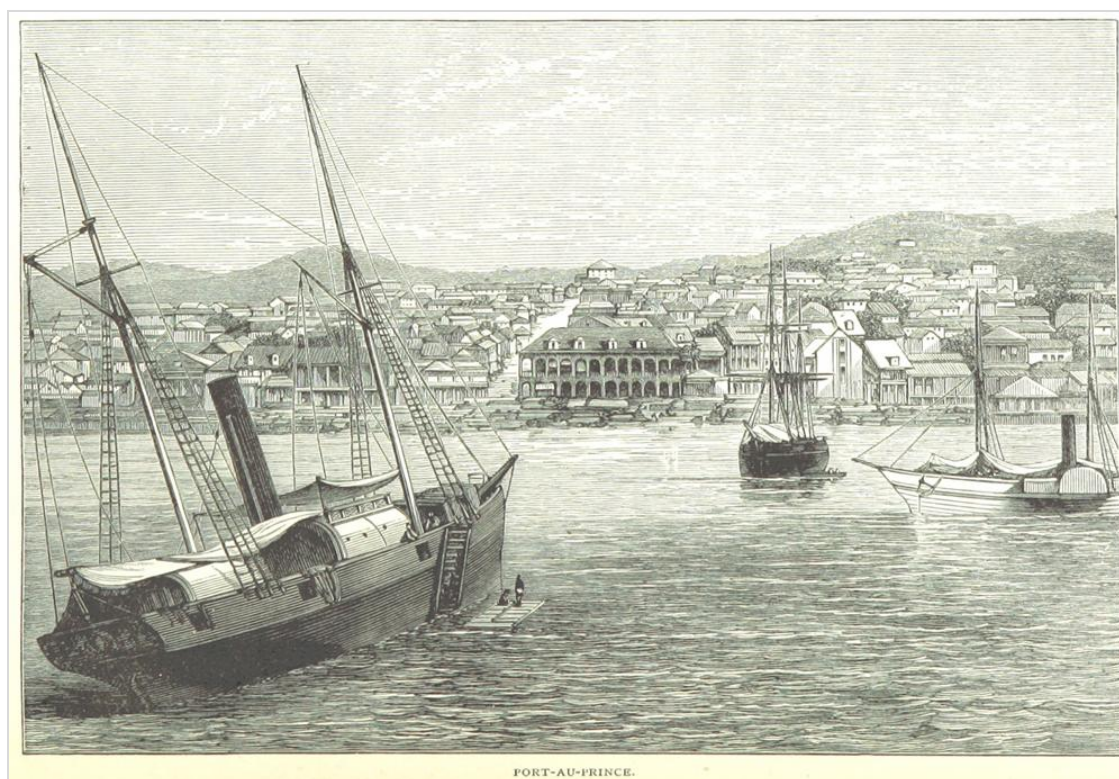
Before me M. L. Harris Esq  
**LIST or MANIFEST of all the PASSENGERS** taken on board the Brig Hayti  
Cutts, is Master, from Port au Prince burthen 119 1/2 tons. whereof

NAMES.	AGE.		SEX.	OCCUPATION.	The country to which they severally belong.	The country in which they intend to become inhabitants.	Died on the voyage.
	Years.	Months.					
<u>J. Colver</u>	<u>35</u>	<u>05</u>	<u>Male</u>	<u>Merchant</u>	<u>Port au Prince</u>	<u>Port au Prince</u>	
<u>L. Blumstein</u>	<u>35</u>		<u>a</u>	<u>Major</u>	<u>Port au Prince</u>		
<u>Mrs Dickson</u>	<u>40</u>		<u>w</u>	<u>Labourer</u>	<u>H Hayti</u>		

**Figure 7.** Digitized microfilm Record 270 of the Brig *Hayti* under Captain Oliver Cutts arriving in the Port of New York on 15 May 1845 from Port-au-Prince.

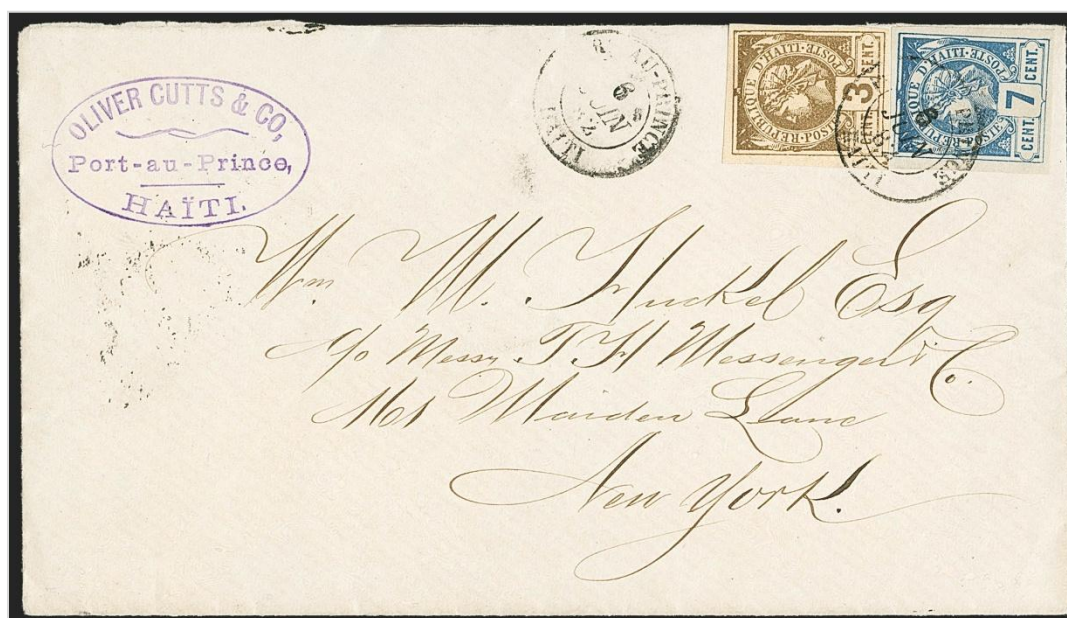
To my delight, I quickly found the manifest illustrated in Figure 7. This is the original record documenting the arrival of the Brig *Hayti* from Port-au-Prince on 15 May 1845 to New York; carrying three passengers, and under the direction of Captain Oliver Cutts. We can now establish that the Brig *Hayti* carried Thomas' letter from Port-au-Prince (Figure 8) and that Captain Cutts collected the 2¢ Ship Letter fee in NYC.





**Figure 8.** Port-au-Prince, from “*Santo Domingo Past & Present With A Glance at Hayti*,” c. 1870.<sup>4</sup>

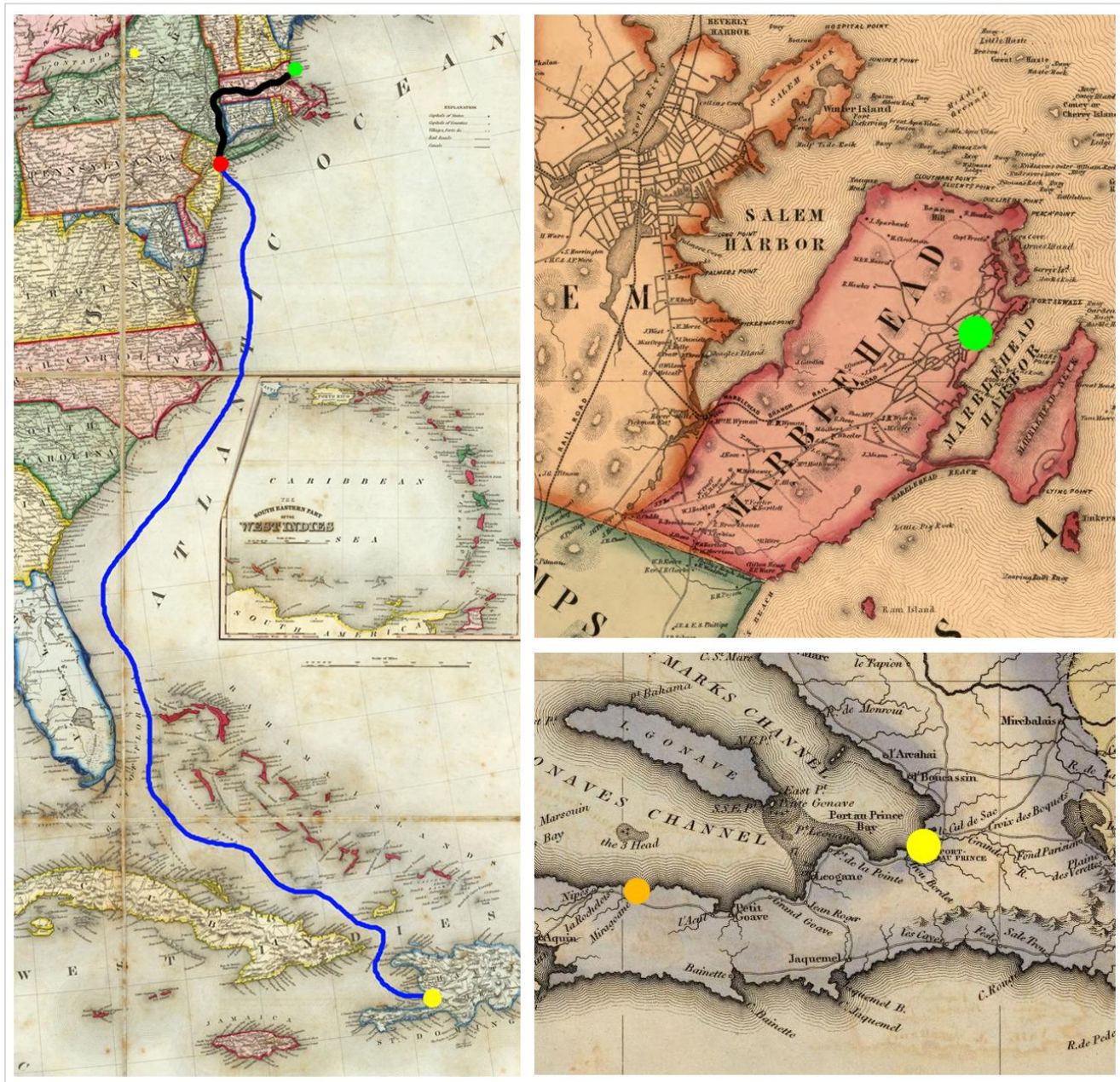
It is worth mentioning that Oliver Cutts, Esq. (1815 – 1885) was not only an American Brig Captain, but a gentleman of wealth. He was a merchant and owned Oliver Cutts & Co., which was largely engaged in Haitian trade (Figure 9). He was the co-owner of a thousand acre plantation in Port-au-Prince, lived in Haiti for nearly 14 years, worked to bring an automated sugarcane process to the island, and later in life endowed a professorship in Mathematics to Wesleyan University. He died 16 February, 1885 in Washington, D.C. at age 70.



**Figure 9.** 1881 cover from Port-au-Prince to New York with “**Oliver Cutts & Co, Port-au-Prince, Haiti.**” violet oval handstamp at top left. Care of Robert A. Siegel Auction Galleries, Auction 1143, Lot 3785.



With the SFL now at the New York City Post Office, its final inland transit to Marblehead, MA could begin. Figure 10 illustrates the probable route the Brig *Hayti* sailed (blue line) from Port-au-Prince, Hispaniola (yellow dot), to the Port of New York (red dot), then overland via coach or rail (black line) to Marblehead, MA (green dot). While we cannot be absolutely certain that Sarah received this note from Thomas as there is no docketing confirming receipt – I would like to believe that she did – and a few weeks later being able to embrace her seafaring husband after his long journey. We are fortunate that this Ship Letter has survived after 170 years and that we could ascertain the sequence of all those that handled this piece of postal history on its voyage.



**Figure 10.** Left Map: Probable route the Brig *Hayti* sailed (blue line) from Port-au-Prince, Hispaniola (yellow dot) through the Caribbean, north along the Atlantic coast to the Port of New York (red dot); then overland via coach or rail (black line) to Marblehead, MA (green dot). Top right: topographical map of Essex County, 1856, showing the Marblehead peninsula and harbor.<sup>5</sup> Bottom right: topographical map of eastern Hispaniola, showing Port-au-Prince Bay, Port-au-Prince and Miragoane (orange dot), 1823.<sup>6</sup>



### Acknowledgements

The author wishes to thank Richard F. Winter for sharing his knowledge of maritime postal history and my brother-in-law Julio A. Diaz-Faes for assisting in the translation of the letter. Any error and/or omission is the author's responsibility. He can be reached at [charlesdico@gmail.com](mailto:charlesdico@gmail.com)

### References

1. John Cole (1828-1902) Papers, MH 61, Phillips Library, Peabody Essex Museum, Salem, Mass., <http://phillipslibrarycollections.pem.org/cdm/ref/collection/p15928coll1/id/1898> (last viewed 5 October 2018).
2. *Old Marblehead Sea Captains and the Ships in which they Sailed*, by Benjamin J. Lindsey, Marblehead Historical Society, 1915.
3. National Archive's micropublication M237, *Passenger Lists of Vessels Arriving at New York, 1820-1897*, [https://www.familysearch.org/wiki/en/Free Online New York Passenger Lists, 1820-1897](https://www.familysearch.org/wiki/en/Free_Online_New_York_Passenger_Lists_1820-1897) (last viewed 5 October 2018).
4. Image taken from *Santo Domingo, past and present. With a Glance at Hayti*, by Samuel Hazard, London, 1873, pg. 536, Free Media Repository, The British Library @ Flickr Commons.
5. *Topographical Map of Essex County, Massachusetts*, by H.F. Walling, 1856.
6. David Rumsey Historical Map Collection, Reference cf. 4584.000, *Hayti or Saint Domingo*, Engraved by B.T. Welch Sc., Drawn & Published by Fielding Lucas Jr., Baltimore, MD, 1823.