

THE CARD – Vol. 30, No. 4, Issue 337, April 2019

A Publication of the Lancaster County Postcard Club, Lancaster, PA

Enjoying postcards through education and entertainment.

Next Meeting: April 15, 2019. Farm & Home Center. Buy, Sell & Trade from 5:00. Meeting - 7 PM

Like us on Facebook – www.facebook.com/LCPClub.

<http://www.lcpc-stamps.org/newsletter-archive/the-card/>

MARCH MEETING

President Susan Glass opened the meeting by asking members and guests to stand and salute the flag. Two guests were present Mark Hoffman and Barry Campbell, who collects local cards. The minutes were read and corrected. The winner of the February 50/50 was Ray Dennis. The treasurer's report showed a balance of \$6,677.64.

Dick Pendergrast reminded members that this is the month to pay membership dues of \$15 per person or \$20 for two people living in the same household.

Sharon Gromis got a round of applause for taking over the job of coordinating the LCPC Expo from Jere Greider. The date of the Expo is August 17. She will have advertising cards at the meeting in March.

The 50-50 prize of \$12.50 went to Mark Jardel who donated it to the club. The door prize vouchers were won by Paul Smoker and Jeanne Schopf.

Ken McClain submitted topics for the Expo board competition and Susan Glass asked members to look over the list and submit any other suggestions.

After a discussion at the Board of Directors meeting, it was decided to donate \$100 to the Philatelic Society of Lancaster County to defray the cost of the website, which costs \$300 a year. Most of the issues of *The Card* have been placed on the website. In the earlier issues, there is extensive information about postcards and their history.

Ed Close gave the program for the evening "Real Photo PC Train Wrecks of the Pennsylvania Railroad from 1905-1926. The meeting was adjourned at the end of the program.

** MEMBERSHIP REMINDER – PAY DUES NOW!

Membership dues are renewable in March. **Individual dues are \$15.00 or \$20.00 for two people residing at the same address.** See Dick Pendergrast at the April meeting or you may send a check to:

Richard Pendergrast
950 Willow Valley Lakes Drive, I-506
Willow Street, PA 17584

FUTURE SHOWS

April 27&28 – Allentown Spring Show, Allentown Fairgrounds, Allentown, PA, Saturday 9-5, Sunday 9-3, Admission \$10

May 19 – Postcard & Ephemera Expo, Reform Congregation Oheb Shalom Social Hall, 555 Warwick Dr., Wyomissing, PA, Sunday, 9-5, Free Admission. Early Admission @8 am - \$10

APRIL PROGRAM

The program for the evening - "America At War" – Messages (and Images) on Post and Postal Cards from the Civil War to the Present - will be presented by LCPC member Bob Kramer.



2019 PROGRAMS

May – Mark Arbogast – Construction of Safe Harbor Dam 1930 - 1931

June - Bud Heim – Conestoga Traction Company

July - Picnic

August - Expo

September – Leighton Stover

October – Betty Beck – Word Games on Postcards

November – Ken McClain – Walt's Cards

December – Christmas Party

MARCH POSTCARD COMPETITION

Seven members competed in the single card competition on the subject "Marching Bands".

First:	Sharon Gromis	Marching Through Lancaster
Second:	Mark Jardel	Middletown Salvation Army Band
Third:	Maria Schurz	Bob Hermine's Midget Band

Honorable Mention:

Dick Pendergrast	British Marching Band
Bob Kramer	World War I, Marching to Camp
Merv Wenger	Waverly, New York, Parade
Donna Bashaw	Opening of the Bavarian Festival

2019 POSTCARD COMPETITION SUBJECTS

April – Lancaster Downtown

May – Lancaster County Historical Sites

June – Mechanical Card

July – Clowns

August - Make a Expo Board

September – Antique Automobiles

October – Anything Orange

November – Food

December – Churches



MARCH POSTCARD COMPETITION



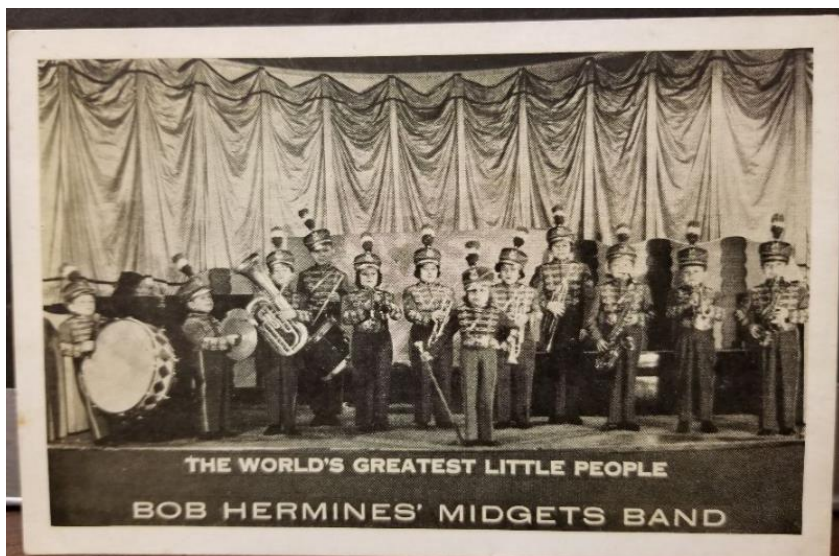
Sharon Gromis



Mark Jardele



Maria Schurz

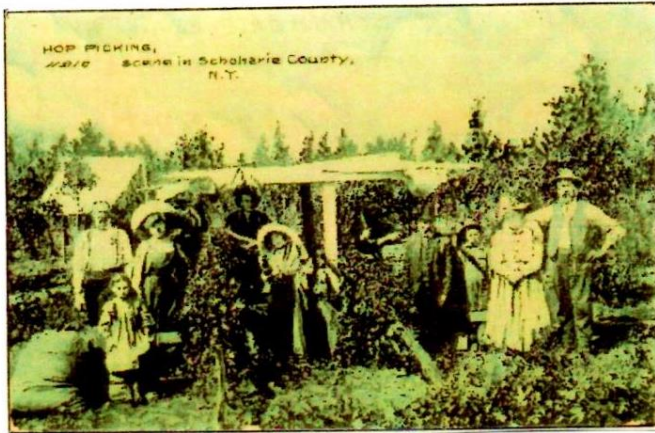


HOPFEN FÜR DAS BIER FÜR ALLE

By Jim Ward

Hops have improved on the taste of beer since the time of the Babylonians and Egyptians. In a will of Pepin the Short, the father of Charlemagne, hop gardens were left to the Cloister of Saint-Denis in 768.

Hop cultivation began in the United States in 1629 by English and Dutch farmers. The world's production of hops occur near the 48th parallel north, with the exception of Australia and New Zealand (see chart).



Hop Picking Scene in Schoharie County, N.Y.



Hop Field in Cobleskill, N.Y.

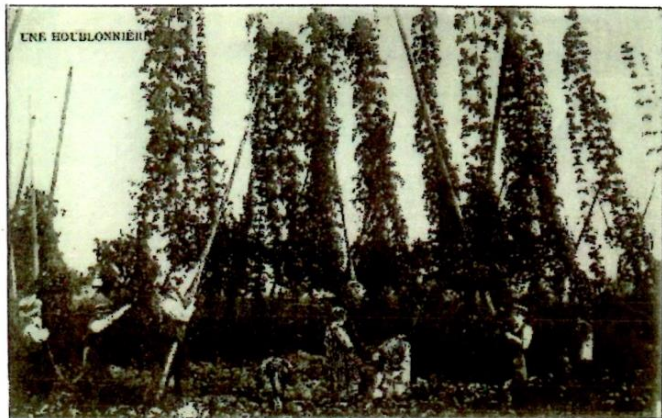


Hop Field in Oregon



Male and female flowers develop on separate plants and since pollinated seeds are poor for brewing beer, only female plants are grown. The cones grow high on bines planted 8 ft. apart. By the end of summer, bines are pulled down and dried in the oast house. Hop growing was first labor-intensive and families were hired for the harvest.

Acids and oils vary in hops. Flavors and aromas have been described as “grassy, floral, citrus, spicy, lemony, grapefruit and earthy.



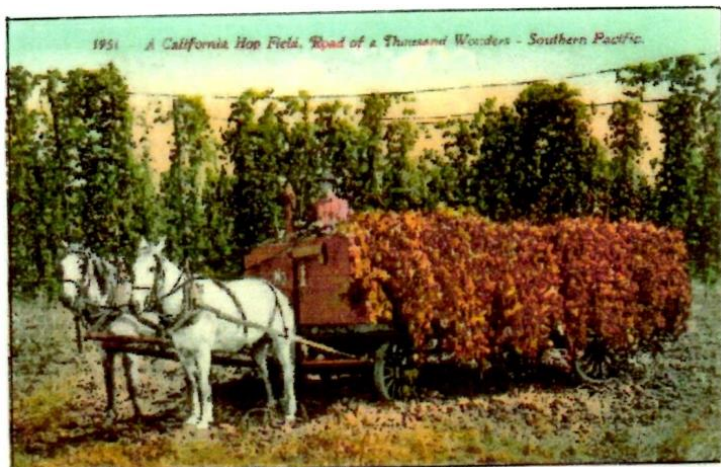
UNE HOUBLONNIERE



East Kent Gardens



Hop Picking – Measuring the Hops



A California Hop Field, Road of a Thousand Wonders – Southern Pacific



American hop production began in New England, but migrated to better climates on the West Coast. Like to learn more about this - “Hop To It” on the Internet or your favorite library.

Hops on postcards aren’t too plentiful, but when you find some with plenty of Old Timey workers, they’ll run from #3 to \$10.

Hop producing country ↕	2017 hop output in tonnes (t) ^[22] ↕
United States	44,324
Germany	39,000
Czech Republic	6,100
China	4,500
Poland	2,826
Slovenia	2,600
UK/England	1,400
Australia	1,200
Spain	950
New Zealand	760

Source - WIKIPEDIA



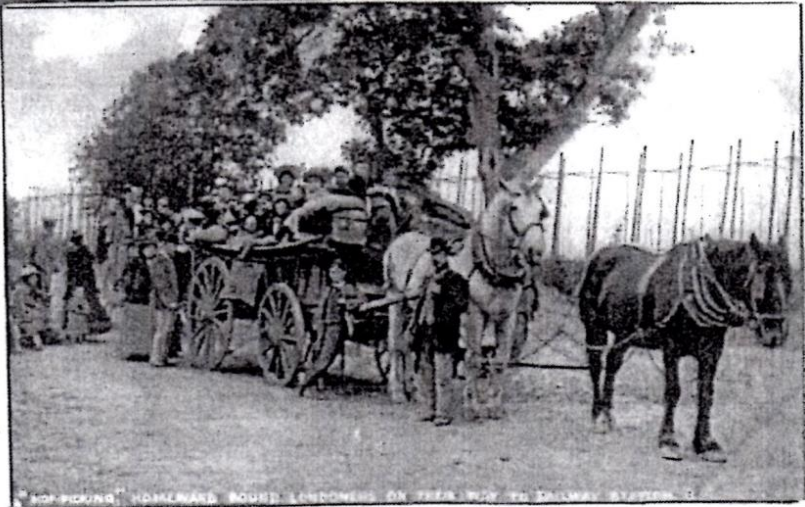
Hop flower in a hop yard in the Hallertau, Germany



“Hop Picking” - Tally??



A handful of hop fruits ready to be dried.



“Hop Picking” Homebound Londoners on their way to the Railway Station

FLORENCE ROBINSON

(No. 6 in a Series on Signed Artists)

Florence Robinson was born in Taunton, Massachusetts in 1874. She started exhibiting her art at Boston Art Club in 1893 against her family's wishes.

She broke off with her family to study art in Paris and had exhibits of her work at the Paris Salon. She lived in New York but often was gone painting abroad.

Tuck commissioned her to do a series of Private Mailing Cards of Greater New York.

She died in 1937.

Examples are:

"The Plaza, 59th St.
and Fifth Avenue"



"Manhattan Beach
Coney Island"

