

# THE CARD – Vol. 30, No. 8, Issue 341, August 2019

A Publication of the Lancaster County Postcard Club, Lancaster, PA

*Enjoying postcards through education and entertainment.*

No Meeting, Attend the Expo: August 17, 2019

Like us on Facebook – [www.facebook.com/LCPClub](http://www.facebook.com/LCPClub).

<http://www.lcpc-stamps.org/newsletter-archive/the-card/>

## JULY PICNIC

On a hot Sunday afternoon it was a delight to be inside for the annual picnic at Barabra Mowrer's home. We were a congenial group of friends enjoying one another's company and the sizable selection of delicious food & drinks. And as icing on the cake, we celebrated Bud Heim's 85<sup>th</sup> Birthday!



## 2019 EXPO BOARD COMPETITION SUBJECTS

Animals  
Historical Sites (world wide)  
Holidays  
Transportation

## 2019 PROGRAMS

**September** – Leighton Stover – Area Railroad Postcards of Lancaster, Chester & Lebanon Counties

**October** – Betty Beck – Word Games on Postcards

**November** – Ken McClain – Walt's Cards

**December** – Christmas Party

## FUTURE SHOWS

**August 17** – Lancaster County Postcard Expo, Farm & Home Center, Saturday 9AM-5PM, \$2.50 (50 cents off with ad or card)



**August 31/September 7** - Brimfield Paper & PostCard Marathon, Brimfield, MA.

## AUGUST EXPO

### **A note from Sharon Gromis:**

Betty Beck and Jere Long are going to be at the Club Table first thing in the am. Annetta Buettner is going to work mid-day for a while, so any help during early afternoon and/or until close at 5:00 pm will be greatly appreciated. Please come out and support your club! Thank you.

### **EXPO Exhibit Board Rules:**

A 22" x 28" board held vertically is recommended and there should be a title on your board(s). Please keep the title an inch or two from the top of the board so that the clip that holds the board won't obscure the title. Do not cover boards. LCPC provides uniform covers. You are encouraged to enter all four categories; multiple boards on a topic are allowed. All boards must be delivered on Friday evening (8/16) at the center or on Saturday prior to the opening of the show.

### **Awards:**

Judges will be selected from the dealers on Saturday morning before the show begins on Saturday morning. They will use the following criteria:

Postcard Information 1/3

Presentation & Originality 1/3

Condition, Completeness & Rarity 1/3

1<sup>st</sup>, 2<sup>nd</sup>, & 3<sup>rd</sup> Place Awards receive \$15, \$10 & \$5 in each category. Best of Show, chosen from the 1<sup>st</sup> place winners, receives \$25. People's Choice, chosen by ballot, receives \$25. All entries receive a specially designed souvenir Expo Award postcard.

## JULY POSTCARD COMPETITION

Six members competed in the single card competition on the subject "Clowns".

**First:** Gisela Withers Feelin' Good

**Second:** Dick Pendergrast A Happy New Year

**Third:** Maria Schurz Lady of Laughter

### **Honorable Mention:**

Annetta Buettner Roller Skating Craze/Gala Night at the Rink

Susan Glass Clown Cats

Doug Milliken Sarasota Ringling Museum

## 2019 POSTCARD COMPETITION SUBJECTS

**August** - Make a Expo Board

**September** – Antique Automobiles

**October** – Anything Orange

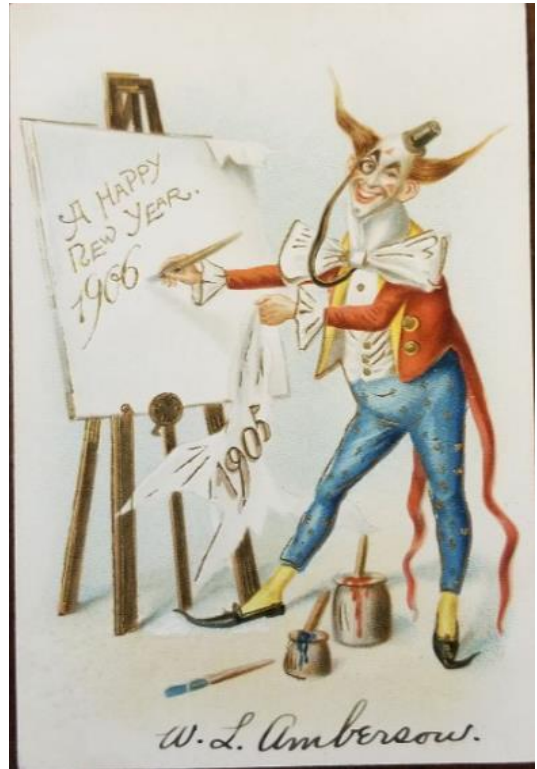
**November** – Food

**December** – Churches

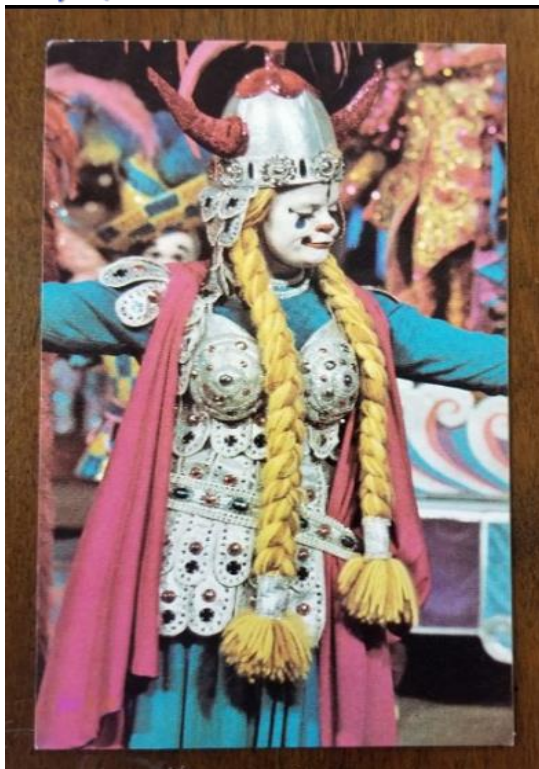
## JULY POSTCARD COMPETITION



**Gisela Withers**



**Dick Pendergrast**



**Maria Schurz**



Our summer display board



## JESSIE WILCOX SMITH

(No. 9 in a Series on Postcard Signed Artists)

Jessie Wilcox Smith was born in Philadelphia on September 3, 1863. She studied at the Drexel Institute of Art.

She developed a very distinctive style of art. Her pictures were maternal although she herself never was married.

She won many awards at expositions of the period. Her designs graced the covers of many magazines and especially were on Good Housekeeping from 1917 to 1933. She also did illustrations for many products like Ivory Soap. She did not paint pictures intended for postcards. She died in 1936.

The illustrations below were taken from a series called "The Child In a Garden" which appeared in Scribner's Magazine.



# MERMAIDS ARE SCARCE

By Jim Ward

The term MERMAID derives from “mere” meaning sea or lake: “maid” of course, is a young lady or maiden. Finding these sultry creatures on postcards is no easier than finding them “in the flesh” so to speak.

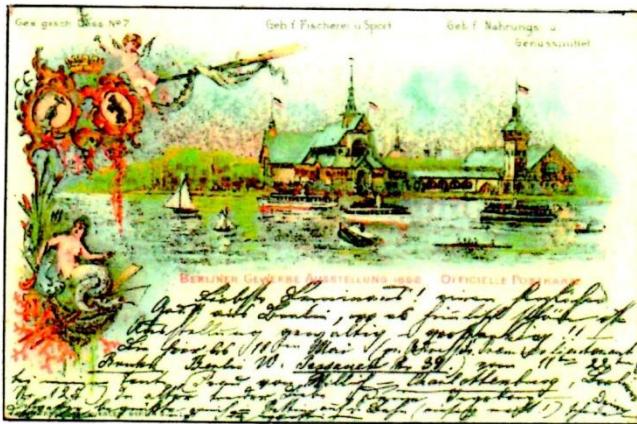
In June 1881, a Pennsylvania fisherman reported five mermaid sightings in the Susquehanna River near Marietta. You can’t get much closer than that! And literally thousands of sightings have been registered down through history on every continent and dozens of countries.

Mythology from ancient times includes images on early Greek coins. Stories like “One Thousand and One Nights” do justice to the maids of the deep. Hans Christian Anderson’s “The Little Mermaid” and Disney’s “Little Mermaid” perpetuates the images.

She may be called by a different name in China or Cambodia, in North Africa or the Caribbean, but her likeness fits the same description – the upper half a human, the lower half a fish. And even scarcer – on postcards and in sightings, are mermen.

Columbus’s crew and Blackbeard’s too, sighted the sea girls. P.T. Barnum had his sideshow Fiji mermaid.

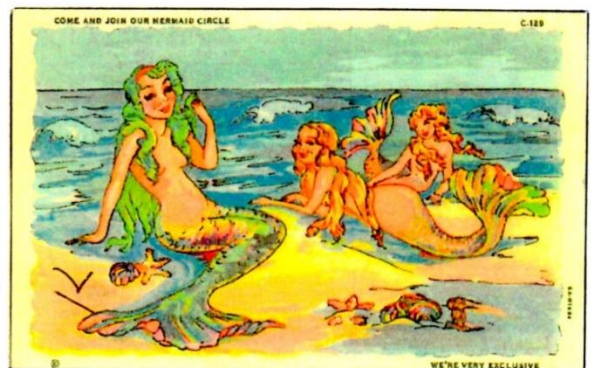
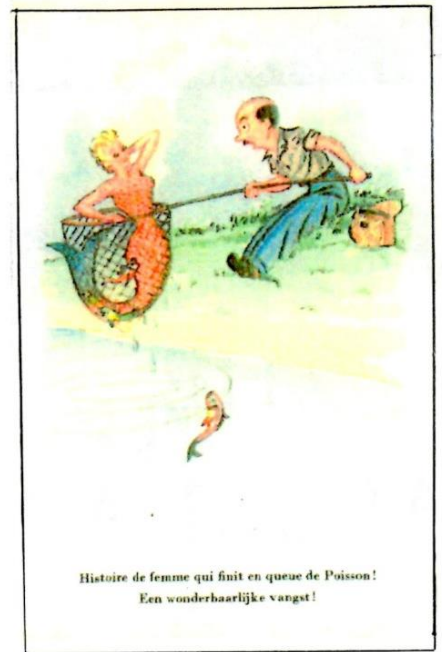
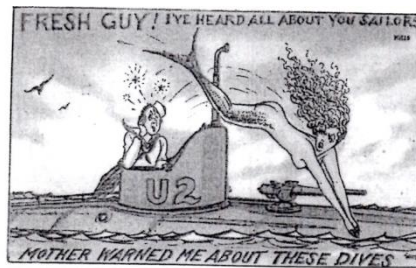
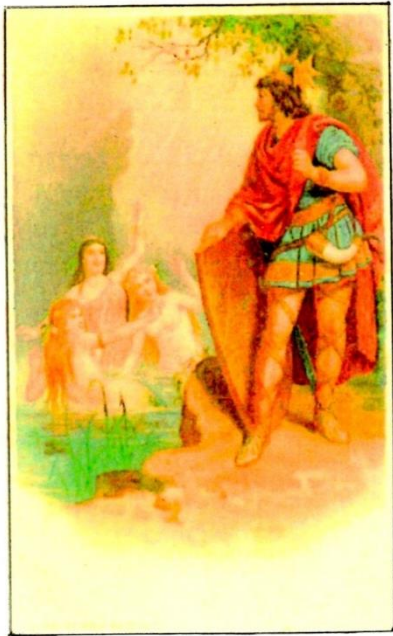
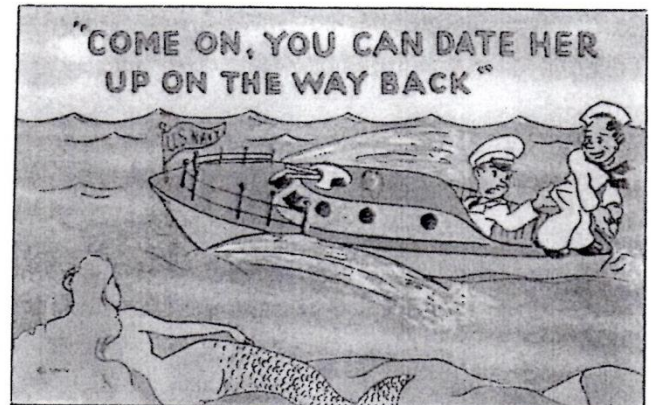
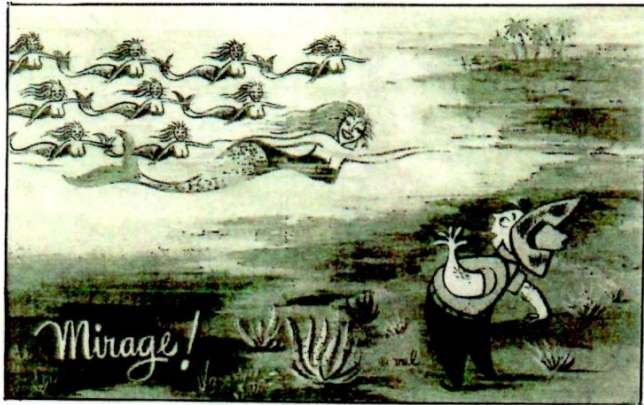
Sculptures of 130 mermaids are found in no fewer than 40 countries around the world. In Copenhagen she is the city’s icon. She’s on the coat of arms for Warsaw and Norfolk, VA.





Only a handful of the PCs we've seen were mailed. Were folks afraid of a post office censor? And those used cards range from the 1896 Berlin Trade Expo to GI mail in WWII.

In this collection of a dozen hard-to-find cards, two were mailed from WWII servicemen, one at Ft. PIERCE, Fl. And one from Camp Peary, VA. The real prize, however, must be the chromolithograph showing a scene at the Berlin Trade Exposition. The clearly read date is May 5, 1896. The tiny mermaid is along the left side.

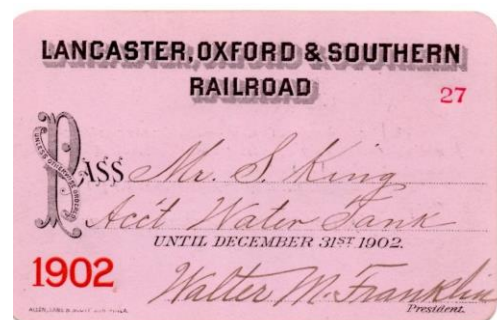
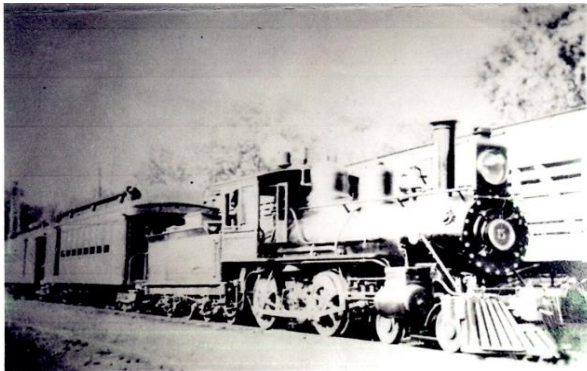






## THE L, O and S

Also known as the Little, Old and Slow, the proper name for this Railroad was the Lancaster, Oxford and Southern. This Railroad was a narrow gage, in fact it was the first chartered narrow gage in Pennsylvania and it serviced the lower Lancaster and western Chester Counties on it's 28 miles of track. This small Railroad was chartered in 1868 and abandoned in 1919. Information from Ben Kline Jr.'s book – "Little, Old and Slow".



One of the cars is at the Strasburg Railroad