

THE CARD – Vol. 30, No. 11, Issue 344, November 2019

A Publication of the Lancaster County Postcard Club, Lancaster, PA

Enjoying postcards through education and entertainment.

Next Meeting: November 18, 2019. Farm & Home Center. Buy, Sell & Trade from 5:00. Meeting - 7 PM

Like us on Facebook – www.facebook.com/LCPClub.

<http://www.lcpc-stamps.org/newsletter-archive/the-card/>

OCTOBER MEETING

President Susan Glass opened the meeting by having everyone pledge allegiance to the flag. There were 25 people in attendance with no guests.

The secretary's minutes were approved as read.

There were no reports from the committee chairs. President Glass asked for volunteers to serve as officers. So far, Mark Arbogast offered to be president next year with Ken McClain as the vice president. Barb Mowrer and Betty Beck volunteered to be treasurer and secretary. Potential Board of Directors members would include Annetta Buettner and Gisela Withers. Also serving on the Board would be the current and past presidents, the vice president, the secretary, and the treasurer.

The Board of Directors discussed the monthly postcard competition subjects for 2020. Anyone with a suggested topic is asked to share it with President Glass. At the January meeting, the club will celebrate its 30-year anniversary. The traditional program is a Members' Participation "Bring A Favorite Card" to share with the group and the competition will be a card with "20" as the theme, so members can be creative, perhaps finding a train with 20 cars or a card with 1920 on it.

The program for this evening was "Word Play on Postcard" presented by Betty Beck featured cards with rebuses, puns, and riddles. Three cards had interesting histories: a card mentioning Joe Gans, the black from Baltimore who was the lightweight boxing champion; a card about the Los Angeles Breakfast Club with an unusual poem that began FVENH?; and leather cards that were briefly printed in the early 1900s and discontinued by the government after they jammed the postal machines.

The meeting was adjourned after the program.

FUTURE SHOWS

Nov 15-16: 42nd Annual Old Dominion Post Card Club Show & Sale. John Tyler Community College, Chester, VA, Fri: 10 AM-6 PM. Sat: 10 AM-5 PM. \$3 donation, good for both days.

Nov 22-23: York International Postcard Expo. York Fairgrounds, Horticultural Hall, 334 Carlisle Ave., York, PA. Fri: 9 AM-7 PM. Sat: 9 AM-5 PM. \$5.00, good for both days.

Nov 29-30: Lancaster Fall Postcard Show, Farm & Home Center, 1383 Arcadia Road, Lancaster, PA, Fri: 9 AM-4 PM, Sat: 9 AM-2 PM, Admission \$2.50

NOVEMBER PROGRAM

The Walt Disney Company even created Christmas Cards! But the first ones in 1930 that year were only mailed to a Who's Who of Hollywood and others who worked closely with Walt Disney. Most of us have never seen one but club member Ken McClain will soon change that when he offers a program showing us postcards that depict those Disney Christmas cards.



2019 PROGRAMS

December – Christmas Party

OCTOBER POSTCARD COMPETITION

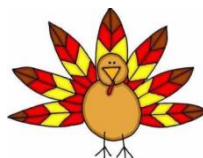
The topic for the evening's single card competition was "Anything Orange."

First: Susan Glass "Pumpkin Mouse"
Second: Maria Schurz "Who is the Better Citizen"
Third: Brian Frankhouser "Reese's Peanut Butter Cups"

Honorable mention: Jere Greider "Halloween"; Barb Mowrer "Christmas Market"; Paul Smoker "Pumpkin Field"; Ken McClain "Pumpkin and Cats"; Annette Buettner "The Candy Girl"; Dick Pendergrast "The Real Things"; Don Tribbit: "Traveling Through An Orange Grove in Florida"; Bob Kramer "National Orange Show 1948"; Betty Beck: "Autumn in Sherwood Forest"

2019 POSTCARD COMPETITION SUBJECTS

November – Food
December – Churches



OCTOBER POSTCARD COMPETITION



Susan Glass



Maria Schurz



Brian Frankhouser

SHADES AND SILHOUTTES

By Jim Ward

Information is largely from Peggy Hickman's very comprehensive book, "Silhouettes."

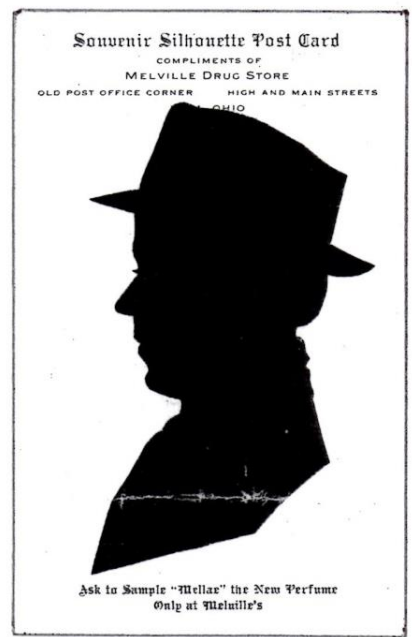
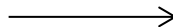
Their older name was "shades" or Profiles in Miniature." "Silhouette" was coined in the 19th century from the name of Etienne de Silhouettes (1709-1767) a frugal French Controller-General of Finances whose favorite hobby was cutting profiles from black paper. He did NOT invent the art but his name was applied to it because he believed it was a better and cheaper way to make profiles. Its heyday was 1790 to 1860. "Shades" needed no lengthy sitting. They were exchanged among friends as we would snapshots.



"This is my latest Shadowgraph, shaded" was done in The Big Store, Siegel, Cooper Co., NY, July 1905.



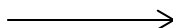
Man facing left is on a Souvenir Silhouette Post Card. Compliments of Melville Drug Store on an un-mailed PMC.



The gent within the fancy border was published by the Holden and Clausen Co., Copenhagen, Denmark, pm 1907.



The young lady is by Thr. Clausen, Stellingen, Germany.



By 1800 more than sixty men and women comprised the British school of profiles. Some silhouettes were enhanced with gold or bronze paint.

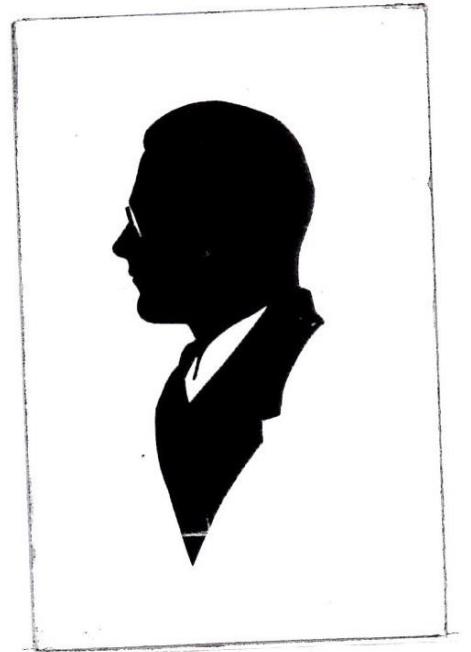
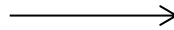
A handful of early LCPC members cherish silhouettes from the adept hands of LCPC member Jim Rudisill. He created a matching pair quite easily in 4-5 minutes. Jim now resides at Senior Common in York, PA.



“Could you beat this for a Comic Valentine?” is by Swanberg; mailed from Bridgeport, CT



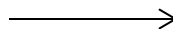
Gent with specs is by Edith Lewis who worked the 1939 New York Worlds Fair



“Same day or night”. The gent was mailed to Emma Myers in Albany, NY in 1903.

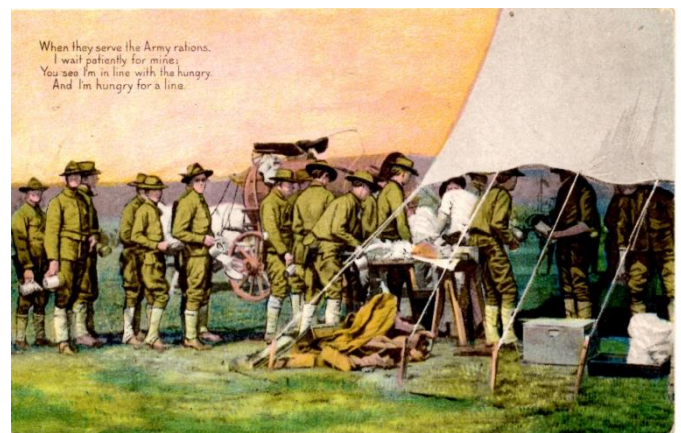
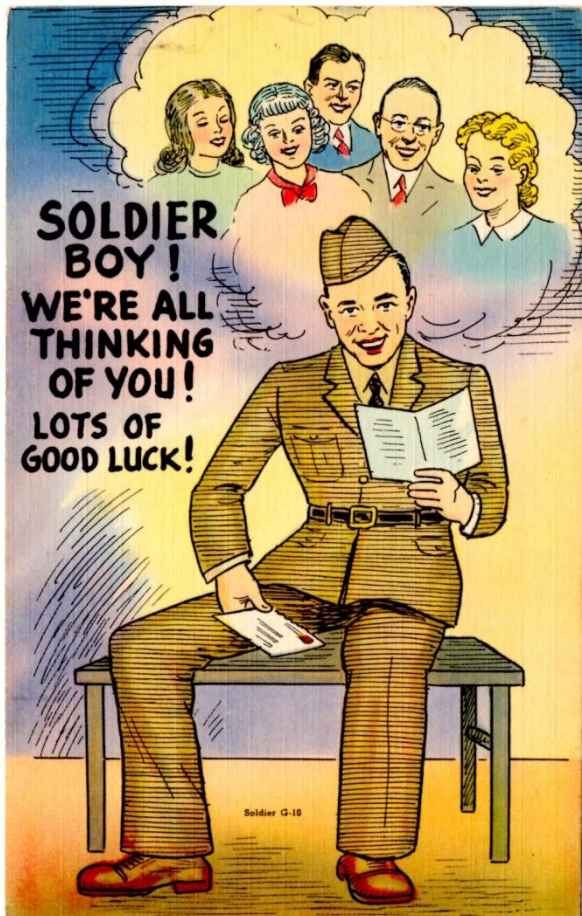
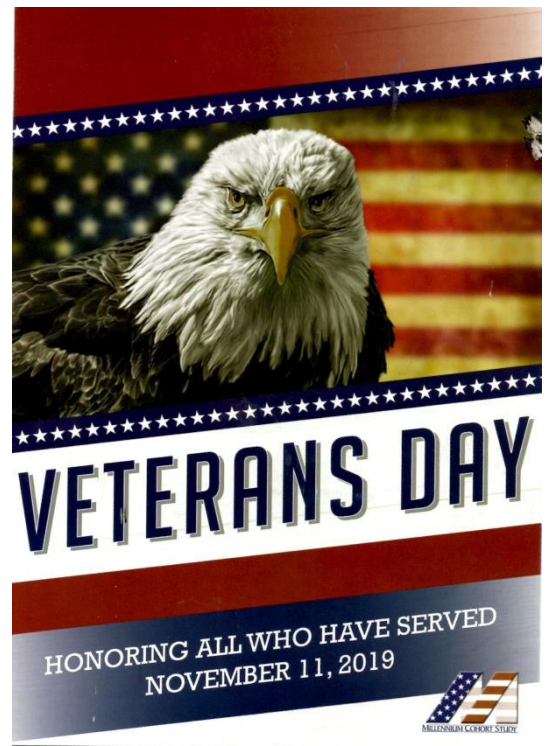


Our final card: the hat speaks for itself, D/b, unmailed.



This postcard was sent to participants of the Millennium Cohort Study. This is the first large, population-based prospective study to investigate the short- and long-term health effects of military service. Currently there are more than 200,000 consenting participants and approximately 10,000 spouses who enrolled as part of the Millennium Cohort Family Study.

*Thank
You*



LANCASTER FALL POST CARD — SHOW —

FRIDAY, NOVEMBER 29, 2019
10:00 AM - 5:00 PM

SATURDAY, NOVEMBER 30, 2019
10:00 AM - 4:00 PM

FARM + HOME CENTER
1383 ARCADIA ROAD, LANCASTER, PA, 17601
(OFF MANHEIM PIKE RTE. 72)

For More Information Call:

Dede Schaeffer (717) 392-3955

Dale Biesecker (717) 334-1674 Cell (717) 404-9635

Admission:
\$2.50

YORK INTERNATIONAL POSTCARD EXPO 2019



2019 YORK INTERNATIONAL POSTCARD EXPO

Friday, November 22nd, 9am - 6pm
Saturday, November 23rd, 9am - 5pm
Admission: \$5 Good for both days

York Expo Center, Horticultural Hall
334 Carlisle Ave, York PA 17404

Hotels:

Wyndham Garden York:

717-846-9500

Comfort Inn:

717-699-1919

For More Info:

410-939-0999

marymartinpostcards@gmail.com

Mary L. Martin Ltd.

Postcard courtesy of the John Monroe Collection