



Celebrating 50 Years of
the Christmas Philatelic
Club See Pg.-4

Philatelic Society of Lancaster County



The James Buchanan Chapter (#173) of the
American Philatelic Society
American Topical Assn., Chapter 118
Member, NY Federation of Stamp Clubs

December Dinner-Garden Café-Woodcrest Villa
Starters at 5:00 pm, Buffet Dinner at 6:00 pm
Wednesday, 18 December 2019

The Veranda Chronicles

Season's Greetings! Here's wishing you a healthy, relaxed, and prosperous holiday season. I hope you are able to spend time with your loved ones by the warmth of a crackling fire. Joyful holiday wishes and countless good tidings.

On November 16, twenty-two members and guests were in attendance for the final **Philatelic Gathering** of the club's inaugural year. The first speaker was **Richard Colberg** who described the anxiety that, both collectors as well as those who inherited collections and are not collec-

tors, experience when they want to sell a collection—they feel that dealers and auction houses may take advantage of them. He listed steps that should be taken for dis-



posal of collections that may be general or specialized, or beginner's type. He differentiated between catalog value and fair mar-

ket value. Sales can be via collector-to-collector, club auctions, APS sales circuit books, dealers, auction houses, eBay or Delcampe online auctions, or APS Stamp-Store. Appraisals are needed in general in order to take advantage for tax purposes. **Gene Fricks** was the second speaker on "Direct Mail Promotion." This is the largest volume generated in the field of advertising. Early advertising was carried out with newsletters, newspapers, book lists, etc. Illustrated envelopes were then used to urge the recipient to open the envelope. Gene described (→Pg.-2 Veranda)

Gift Packets for the American Topical Association: 'Tis the season of cheerful giving, and what better activity is there than donating our topical doubles that will help promote the hobby? Please consider preparing packets of 25 of your topicals such as one for 'wine on stamps,' another for 'racing cars,' or whatever else your interest might be. There will be a collection box for your donated items. We usually collect for APS, but they shared that their supply is well in hand for now. Many thanks in advance.

2019 December Dinner- It's Here!

MENU

White Cranberry Punch
Cheese and Cracker Tray
Grape Glazed Meatballs
Creamy Green Pea & Bacon Salad
Autumn Tossed Salad
Fresh Fruit Platter
Stuffed Chicken Breast/Gravy
Tenderloin Tips Bourguignon
Roasted Salmon with Dill Dip
Buttered Noodles
Redskin Mashed Potatoes
Buttered Green Beans
Cape Cod Vegetable Medley
Four Varieties of Cakes
Coffee, Decaf, Hot Tea, Iced Tea, Iced Water

Schedule: Doors open at 5:00 with a variety of delicious starters. Buffet dinner begins at 6:00.

◆Directions to the Garden

Café: The main entrance to Woodcrest Villa is 2001 Harrisburg Pike, right across from the main entrance of the Penn Medicine Health Pavilion, formerly known as the LGH Health Campus. There is a traffic light at this intersection.

◆Enter Woodcrest Villa and drive straight for about 70 years to a T-intersection. Turn left. Then take your first right. The Garden Café will be at the end of the drive with places to park. You will see the bright lights, accompanied by mirth, gaiety,

and laughter, from within. Enter the Café by the path on the left.



Optional Gift Exchange: To participate, bring a gift with a value of \$5-8 of a philatelic or non-philatelic nature. It is to be unwrapped and have a gift tag firmly attached listing you as the donor. Requests from the past are to avoid candles and holiday decorations. Pre-owned items are fine, but consider what you would like to receive as a recipient.

2020 Dues are Due
(See Page-4)

Volume 82, No. 12
December 2019

Visitors are Always
Welcome

PSLC meets the 2nd Wednesday of the month (except August) at the Crossings Meeting Room, Landis Homes, 1001 East Oregon Road, Lititz, PA 17543 at 7:00 pm. Dues are \$10.00 a year. For club information call Paul Petersen at 717-299-5640

Website: LCPS-Stamp.org

PSLC Officers and Board

President, Web Developer & Designer:

Dr. C. J. DiComo, 914-450-3791
charlesdicomo@gmail.com

1st Vice President:

John Hostetter, 717-394-9626
jhostetterjr@gmail.com

2nd Vice President:

Bill Greiner, III, 717-471-2354
sunfighter@verizon.net

Secretary: Vacant

Treasurer:

Lou DiFelice, 717-572-3419
loudifelice@gmail.com

Past President:

Douglas Milliken, 717-330-4062
dmilliken@me.com

Publicity:

Len Kasper, 717-723-1864
hotrodparts33@aol.com

Membership:

Barb Buchanan, 717-871-0244
tallwood@comcast.net

Newsletter Editor: Programs, Acting Secretary, and APS Rep:

Paul Petersen, 717-299-5640
pcpetersen@comcast.net



Minutes and Treasury of the November Meeting

Paul Petersen, Interim Secretary and Lou DiFelice, Treasurer

Opening: Dr. DiComo opened the meeting at 7:00 and reminded members and guests that the club will meet again at Landis Homes for 2020. He announced the meeting of the Philatelic Gathering on Saturday (the 16th) at the Chester County Historical Association.

Membership: Barb Buchanan introduced six (6) including: Suzanne Noble, Thomas McCormick, Brian Wagner, Marcia Slout, Leon Hurst, and Rikki Godshell. There are 118 paid members as of 31 October. Unpaid-members should take advantage of the 2020 dues discount by paying by 31 December. See Pg.-4. Attendance was 55.

Drawing: Twenty-two door prizes were available at our Open House with a wide variety of stamps, covers, ephemera, and collecting accouterments.

50-50 Drawing: Mark Jardel supervised this event. Lou DiFelice and PSLC split \$100.

Approval of October Minutes and Treasurer's Report: These were approved unanimously by

voice vote and jubilant acclaim.

New & Ongoing Business: Paul Petersen passed around two get-well and one sympathy card for members' signatures. He also circulated the sign-up sheet for the December Dinner as well as the clipboard for 2020 Hosts and Greeters. Paul ended by adding that the Hershey's chocolate Holiday Kisses at this Open-House are in fond memory of **Dennis Bourchard** who passed away just two weeks ago.

Reading Stamp Collectors Club: Peter Baney thanked the PSLC members who helped at their 2 November stamp show along with those who supported the event by attending. He and **Mike Bach** shared that **Mike Matus** is scheduled for open-heart surgery in the am. They will provide an update.

2019 December Dinner: Lou, Paul, and **Deb Ehleiter** gave an update on the dinner. [This info is on Page-1 of this newsletter.]

Lancopex: Paul asked members to start saving their philatelic maga-

zines for the Literature Table at Lancopex on 24-25 April 2020.

Election of Officers: Hal Klein moved that the following slate of officers (below) be put forward for election. This was seconded by Dick Shaefer. This passed unanimously by voice vote.

President: Dr. DiComo

1st VP: John Hostetter

2nd VP: Wm. Greiner, III

Sec'ty: This office is currently vacant. Paul Petersen has been appointed as Interim Sect'y.

Treasurer: Lou DiFelice



Tonight's Program: Tonight was our 2019 Open House and One-Page Exhibit Night. This is covered on page 3.



Treasury: 1—31 October 2019

Opening:	\$5,001.54
Income:	\$305.00
Expenses:	\$221.51
Sum:	\$5,084.97
2-CDs	@ \$5,818.10

(Veranda from Pg.-1) the Mul-ready envelopes and use of woodcuts for early illustrated mail. These evolved into multi-color lithography, patriotic covers first used during the Civil War, and those bearing images of political candidates, farm equipment, tea companies, schools and colleges, etc. America adopted the technology developed in Germany for multicolored illustrations on advertising covers, followed by Canada and then the rest of the world. The phrase "Direct Mail Advertising" was introduced in 1905. Gene included an extensive bibliography of sources in this field. See our website¹.

Our November 13 **Open House and One-Page Exhibit** night was successful. This is reviewed on Pg.-3, and is on the website.² And don't forget the **Some Sunday Stamp Shows** on the 15th.

On December 18 the Society will hold its **Holiday Dinner** at the Garden Café at Woodcrest Villa. It is one of my favorite events of the year. I hope to see many of you in attendance for what will surely be a festive and memorable event. **CDI**

¹ <http://lcps-stamps.org/study-groups/>

² <http://lcps-stamps.org/presentations/annual-meetings/>

Ave et Vale

It is with sadness that the PSLC learned of **Clair Smith's** passing, a member since 6/02. He joined shortly after retiring and relocating to Willow Valley from Michigan where he was in upper management for Gen'l Motors for 38 years.

Given his automotive career path and interest in sailing, two of his favorite collections included sailboats and automobiles.

As a pragmatist, Clair switched from coin collecting to philately when he found stamps to be much lighter. He had numerous country collections, a complete plate number coil set through 2003, and some early U.S. classics.

He added that he liked to compile a collection, sell it, and move on. He found the stamps of the Åland Islands of interest along with the philately of the research bases in the Antarctic. A while back he got into the British Machin stamps with the QEII heads of which there are thousands along with varieties, and at last count, he had over 1000 face different stamps.

In addition to family, sailing, and stamp collecting, Clair loved to play golf and pursue world travel.

Club Notes

Storm Cancellation Policy:

Should there be a storm or the forecast of such, the PSLC Board will make a decision on the status of the evening's meeting. When this is decided, they will inform Paul Petersen who will send out an email. *Those not on email should call him at 1-717-299-5640 for further cancellation information.*

Previous Lancopex Programs:

The following years are needed for the digital archive on our website: '89, '92, '93, '95, '98, & '99. If you have any of these items, please loan them to Dr. DiComo to scan for the website.

Picnic Co-Coordinator Needed:

John Hostetter & Paul Petersen have been coordinating the annual picnic. Since Paul will be out of town for most of the picnics, another volunteer is needed. Most of the work is in compiling the lists and this is already done. Club members always chip in to help cook, set-up, and break down. It is a fun way to serve your club, and this will not take up a lot of time. Please see John or Paul to discuss this exciting opportunity.

Club Notes

Programs, Hosts & Shows

2019 Programs

***18 December:** December Dinner. Deb Ehleiter & Co.

**Please note that this is the third (3rd) Wednesday of the month.*

2020 Programs

8 January: Club Auction. Hal Klein, Host

12 February: From the U.S. to Farther India & Back Again: A Five Month Journey in 1856-1857. Dr. Charles J. DiComo. RD Noble, Host

11 March: The U.S. 1933 Byrd Antarctic Stamp: Production, First Day & Other Uses. Alan Warren. Dick Shaefer, Host

9 April: Exploring Postal History. Bill Schultz. Tony Coccio, Host

13 May: Canada's Role in Union & Confederate Postal Cross-Border Mail during the U.S. Civil War. Ron Majors. George Younes, Host

10 June: Club Auction. Host-
(Host slot needs to be filled.)

8 July: The Development of Perforations on U.S. Postage Stamps During the Toppan, Carpenter Era, 1855 – 1857. Dr. Charles J. DiComo. Dennis Shumaker, Host

9 September: Fall Auction. Thomas Nichols, Host

14 October: 1) GB Stamped to Order Stationary and 2) Royal Household Official Mail. Dave Hunt. Lou DiFelice, Host

11 November: Open House and One-Page Exhibits, Len Kasper & Paul Petersen.

December: December Dinner. Deb Ehleiter & Co.

Of Local Interest 2019

Some Sunday Stamp Shows: 15 December, 10 a.m. to 4 p.m., Farm & Home Center, 1383 Arcadia Road, Lancaster. **Lunch is free.**

2020

York Stamp Show: 24 January, 10-5:30 and 25 January, 10-4:30. Horticulture Hall, York EXPO Center, 334 Carlisle Avenue. Ride Sharing? Call P. Petersen.

DELPEX: Saturday, 18 April '19, Nur Shine Center, 198 South Dupont Highway, New Castle, Delaware

The 2019 Open House and One-Page Exhibit Night

The 2019 Open House and One-Page Exhibit Night was a huge success with 55 in attendance. There were six visitors; snacks were extra special; the bourse was active; the 50-50 Raffle reached \$100; and the two presentations and 13 'One-Page Exhibits' were outstanding. As someone later commented, "It don't get no better than this."



For the digitally connected, this evening's presentations and meeting images are posted on the website. (Go to <presentations/annual-meetings>.)



Two feature presentations followed a short business meeting. **Dick Colberg** (Collecting Across the Pond). Living several months/yr. in France, Dick discussed the similarities and differences in European collecting. Bourses, exhibiting, shows, and club meetings are very different than over here but are nevertheless very gratifying.



***Mike Bach** ↑ (More Than Just a Victorian Penny Black Mourning Cover). He presented the interesting research findings that resulted when pursuing a hand written notation on this 1840 UK cover, the first year of the Penny Black. (The digital exhibits of those proceeded by an "*" are available on the website. See above.) PSLC's **One-Page Exhibits** have evolved, and 2019 was no exception. The floor plan and digital capacity of our new meeting room starting in January have necessarily brought about this change. The exhibitors follow below in order of their appearance. Former Navy man, **Al Schaub** displayed a cover from the USS

Isabel of the Yangtze River Patrol when sailors and Marines were stationed in China early in the last century. Further research of this vessel's operational history were of great interest to both membership and naval historians.



Dennis Milliken (↑) had a Christmas cover from Jordan. Among other elements, it contained a pressed flower from Bethlehem. He led a discussion of a Muslim country celebrating this Christian holiday.

David Silcox shared a cover and newspaper articles related to an 1880 horse and buggy accident killing a family at the major crossroads in Salunga, PA near here. The story includes mistaken identity and a media retraction.



***RD Noble** ↑ displayed his silent pre-cancels from the Chicago area and how they came about in the early 1880s. He also showed us a U.S. Civil War cover and letter from 17 May 1861 and the interesting story behind it.



***Hal Klein**: ↑ (8¢ & 11¢ Airmail Rate Usages During the Prexi Era) This specialized presentation contained the background for the specific rates and routes exemplified through a variety of representative covers of this interesting time for aero-postal historians.

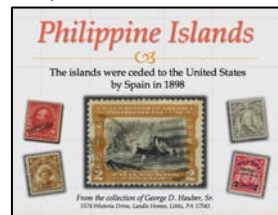


Dick Colberg: ↑ Displayed a

Paris cover from the 1870-71 Franco-Prussian War. Here the citizens sought a variety of ways to get the mail out of their besieged city including balloon mail. Dick described the traverse of his cover along with some of the postal history of this era.



Thomas Nichols: ↑ Gave a biography and some examples of Elaine Rawlinson, the first non-government employee and 1st woman to design a U.S. postage stamp. She won a contest from among 300 entrants for the 1¢ George Washington (Scott-804), the first of the 1938 Presidential Series, a.k.a. the Prexies.



***George Hauber, Sr.**: ↑ Spending some of his missionary time in the Philippines, he came to appreciate the people and history of this country. His array of stamps covered the first issue in 1898 following the Spanish American War and continued through WWII Victory in 1945 and Independence in 1946.

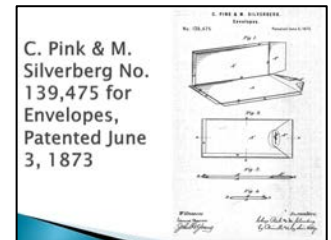


***Dave Hunt**: ↑ An officer in the Error, Freaks, and Oddities Society, Dave showed a variety of 'plate number captures'. Here perforation shifts result in the plate number from the selvage being included in the stamp itself.



***John Ford**: ↑ (An Exhaustive Collection of John Ford on

Stamps). John referenced the 2012 set of four stamps honoring fifty-year film director (>150 films) John Ford. In addition to the stamps he included a First Day Cover.



***Mark Jardel**: (↓) He projected the patent diagrams and finished examples of this experimental yet successful Pink & Silverberg patent envelope of 1873.



***Paul Petersen**: ↑ (Ephemera of the U.S. Int'l Philatelic Expositions.) This PowerPoint contained an assortment of selected items from 1913 thru 2016.



***Dr. DiComo**: ↑ (Wafer Seals on U.S. Folded Letters and Covers 1840-1860s.) This exhibit contained over 45 examples of the intriguing paper seals used to secure the back flaps on the covers. ↓



The evening was made especially successful by the great snacks provided by **Len Kasper** and **Diane Meek**.

Presenters are now encouraged to transform their great holdings into stamp and cover exhibits for Lancopex on 24-25 April 2020. Twenty-four exhibit frames of 16 pages each will be available.

Musings: Cum Laude, Topical Collecting, and the CPC

Thank you kind colleagues: It is the end of the publishing year, and I like to take the time to review the year's issues and realize the support from so many of you to make this one possible. It is always a bit risky to list all the names, but than thanking you is important to me. So if I forgot your name, please let me know, and I will add it to Page-1, above the fold, in the January edition!

Clubs are supported by a variety of elected offices who fulfill their function, and this includes the submission of episodic reports. I extend my sincere gratitude to the following for their well-done and timely reports: **Dr. DiComo** for his presidential column, *The Veranda Chronicles*; **Lou DiFelice** for his Treasurer's Report; and **Diane Meek** for her Secretary's Report and Minutes. Further Diane has been the Hard Copy Circulation Manager for many years.

Additional appreciation is extended to Diane who has served in these capacities for many years and will be retiring from both positions at year's end.

Appreciation to proofreaders **Carol Petersen** and **Dr. Di Como** for their diligent efforts. "This is not as bad as typing Ed's college papers" -CJP

There are also those who write articles for the newsletter, submit photos (aka digital images), and offer short clips and suggestions. These heroes follow in alphabetical order: **Dick Colberg**, **Dr. C. J. DiComo**, **Douglas Milliken**, **Scott Ney**, **Grace Ng**, and **Bob Witkosky**.

And finally from my exalted, esteemed, benighted, and august station as the PSLC Door Prize Czar, I would like to thank the many of you for your donations.

2019 marks the 50th Anniversary of the **Christmas Philatelic Club (CPC)**, a society for those with a postal interest in all things Christmas, from stamps, Cinderellas, FDCs, seals, and postal history.

CPC celebrated their 50th milestone at Millcopex this fall in high style and issued cacheted covers and Cinderellas. As important were their two publications coinciding with this Golden Jubilee, both by Dr. Christine Sanders, published in 2019.



♦ **Collecting Christmas: An Introduction to Topical Philately.** While the subjects of this publication are Christmas themed, the philatelic information and collecting methods presented are of the greatest use to any collector at the beginning or intermediate level of their topic journeys. This publication covers both U.S. and other worldwide items.

Duly impressive is the exhaustive amount of research presented along with the great number of all-color

illustrations, many per page. And when it comes to stamp collecting literature, color takes the cake. Just consider how successfully our first years color advertising cards and show programs were received at Lancopex in April.

The Table of Contents identifies all that the topical collector needs. Let's take a look at some.

The 1st Chapter is **The Basics of Topical Collecting.** This includes information that would make a good program in any stamp club.

(2) **Postage Stamps** (while related to Christmas topics, this could just as easily apply to The Moon Landing on Stamps.) This contains a worldwide view to collecting with purchasing tips for a variety of stamps, souvenir sheets, booklets, & ATM postage among others.

(3) **Postmarks** includes the standards and specials, sources for obtaining 25/12 cancels today, fancy, precancels, philatelic and nonphilatelic cancels, and others.

(4) **Covers and Cards** 'cover' the FDCs, holiday mail, special issues, picture postcards, and specialized cachets. One Christmas cover dates back to 1792.

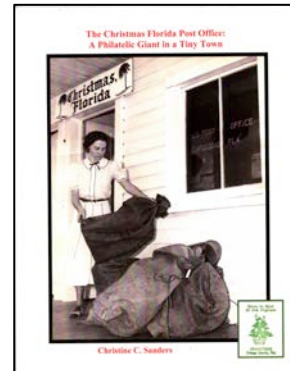
(5) **Cinderellas and Seals:** This final chapter includes Christmas Seals and the host of other labels that emerged shortly thereafter, all to raise funding for both local and national charities.

Listed are philatelic resources such as APS, ATA AFDCS, USCS, Christmas Seal and Charity Stamp Society, and the Postmark Collector's club. The book ends with a

fifty item philatelic glossary.

You will find items here that you never knew about and will want to own in your collections.

♦♦ **The Christmas Florida Post Office: A Philatelic Giant in a Tiny Town.**



The Christmas, FL PO is one of the busiest for holiday mail, which is bused, trucked, mailed, and hand delivered for servicing with the postmark and optional green cachet (lower left). This well illustrated 92-page book contains the history of the PO including the forty-three year service of the innovative PM, Jaunita Tucker.

Almost every Christmas topical collector will have one or more items from this PO. It's a regular stop for cachet makers, and it was the First Day City for the 1969 Xmas stamp issue. Items of postal history are legion, as is the happiness & joy for many at this holiday.

Purchase and Contact Info: Jim Balog: PO Box 744, Geneva, OH 44041; jbp4stamps@windstream.net. **Ed.** ☒

Change in 2020 Dues Structure

The board, to help speed up the process of collecting next year's dues, has approved a new dues structure. The intention is to have all paid up early, by December, by wishful thinking. Here's how it works. Members who pay dues in 2019 will get a 10% discount. So don't wait until Lancopex, as some do, or wait for the third and final notice in June. Please pay your dues tonight, and show mercy on the Membership Committee and Club Treasurer.

☒ ✂
 Please clip this dues renewal notice, complete it, and turn in to Barb Buchanan at the next meeting with **\$9.00**. You may also send it to her at PO Box 116, Conestoga, PA 17516-0116. This 10% reduction is only through 31 Dec. '19

Name: _____ Phone: _____
 Email Address: _____

ATA Member ☐

APS Member ☐

Please check the appropriate ATA/APS box(s) if you are a paid up member.

☒ Make checks payable to Philatelic Society of Lancaster County.



Hand stamped cachet used at Christmas, FL PO for over seven decades with some modifications.

