

THE CARD – Vol. 27, No. 9, Issue 310, September 2016

A Publication of the Lancaster County Postcard Club, Lancaster, PA

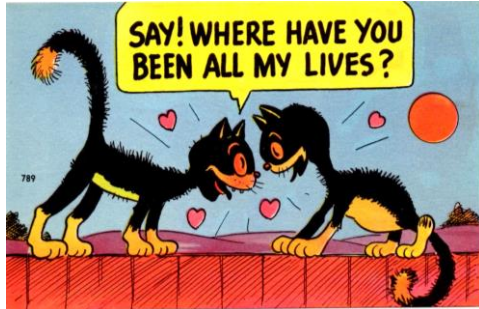
Enjoying postcards through education and entertainment.

Next Meeting: September 19, 2016. Farm & Home Center. Buy, Sell and Trade from 5:00. Meeting - 7 PM.

Like us on Facebook – www.facebook.com/LCPCLub.

2016 EXPO

The 24th Annual Postcard EXPO was held on Saturday, August 20, 2016 at the Farm & Home Center. Chairman Jere Greider would like to thank all the members who helped with the Friday night setup and those who helped on Saturday at the club table. A full report will be given at the meeting.



FUTURE SHOWS

September 25 – Upstate New York Postcard Club 43rd Annual Post Card Show, Elks Lodge #414, Troy, NY, Sunday 9-4, Adm. \$3.00

October 1 & 2 – Allentown Fall Antique Advertising, Book, Postcards, Photography & Paper Show, Allentown Fairgrounds, Allentown, PA, Sat. 9-5, Sun 9-3, Adm. \$7.00

November 25/26 – Lancaster Fall Postcard Show, Farm & Home Center, Fri. 10 – 6, Sat. 10 -4, Adm. \$2.50

SEPTEMBER PROGRAM

This is a scheduled Member's Market, meaning any member of the club may set up and sell postcards on a table at no charge. Items for sale can be postcards, books, local historical items, and paper ephemera. There will be a brief business meeting as well as the monthly card competition.

2016 PROGRAMS

September – Members Market

October – "Man's Best Friend"- Dick Pendergrast

November – Lititz – Betty Beck

December - TBA

2016 EXPO EXHIBIT BOARDS

LANCASTER COUNTY TOWNS

First:	Bud Heim	Pequea
Second:	Bob Zink	Mountville
Third:	Don Brown	Manheim 1907 - 1923

TRAINS & TRAIN STATIONS

First:	Don Brown	Working Locomotives 1920 -1940's
Second:	Bud Heim	Railroad Stations #1 & #2
Third:	Susan Glass	Trains & Train Stations

AMUSEMENT PARKS

First:	Barb Heim	People's Park
Second:	Bud Heim	Rocky Springs Park #1 & #2
Third:	Don Brown	Amusement Parks

NATIONAL PARKS

First:	Susan Glass	Mount Rainier
Second:	Bud Heim	Rocky Springs Park #1 & #2



BEST OF SHOW & PEOPLE'S CHOICE

Bud Heim Pequea

2016 POSTCARD COMPETITION SUBJECTS

September – Comic Cards – a board

October – Pumpkin – single card

November – Political card – single card

December - Snow Person – single card

2016 EXPO BOARD COMPETITION

Pequea – 1st Place Small Town, Best of Show & People's Choice



1st Place – Trains & Train Stations



1st Place – Amusement Parks



1st Place – National Parks



MECHANICAL POSTCARDS

By Jim Ward

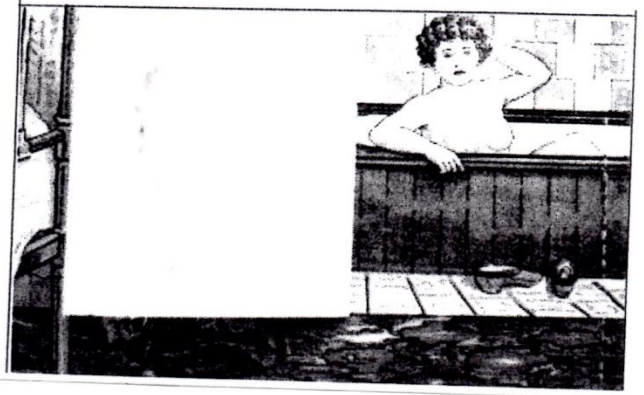
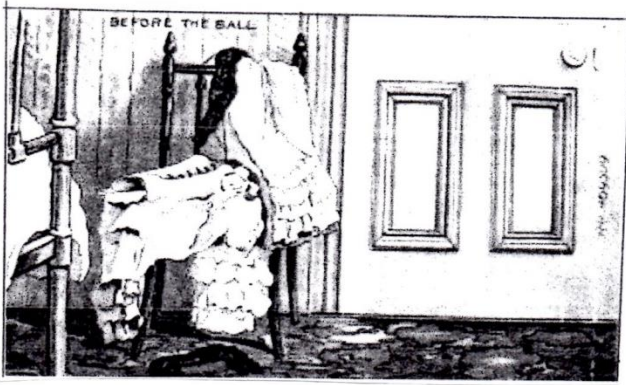
With Internet pictures and information gathered by Betty Beck

Mechanical Postcards are defined as those that move, change, or DO something. There exists dozen of different types. Here we see just a few.

The children on the Easter Mechanical change to a lady with a dressed rooster when the tab is pulled. Some call this a “venetian blind” card, but you’d have to be old enough to have seen these in operation. Maybe today’s version is called “verticals”. Christmas Santas are the prize in this category.

The mechanical feature of the mailbox card is the changeable month and day. The colors and embossing are superb yet the card is common enough to be priced reasonably. The series features an assortment of lovely girls.

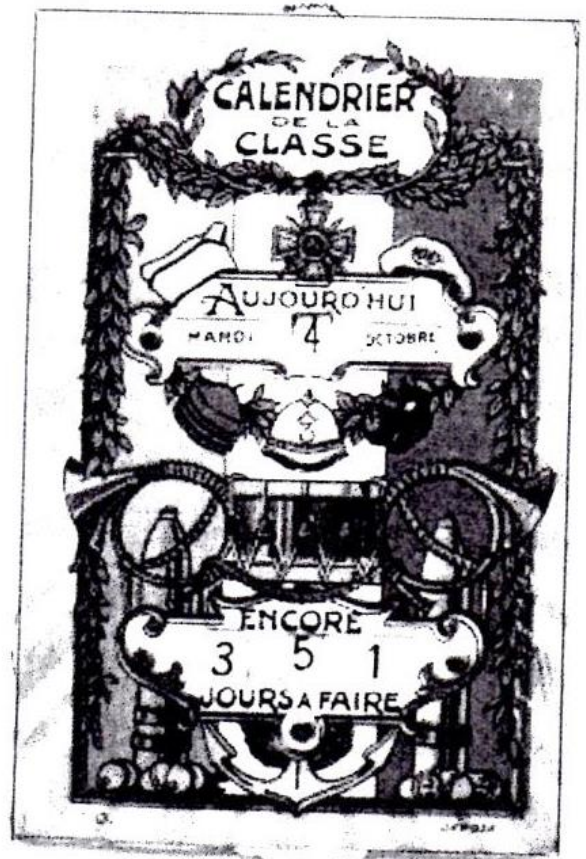
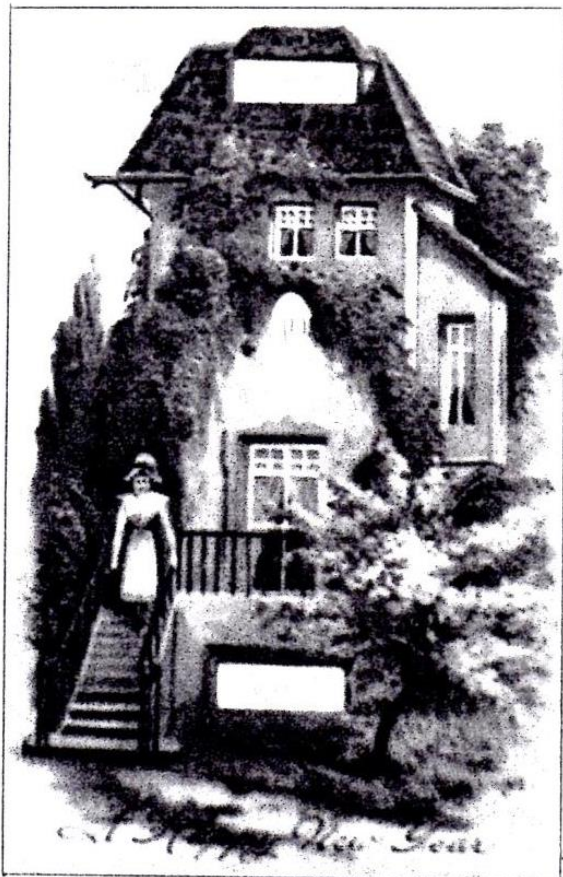




The girl in the tub could be defined as risqué. The bathroom door simply folds back to the left – note the same brass bed fixtures in both scenes.

A lady stands (left below) outside a house with a pink flowering tree. On this “calendar” type - Day of the Week- Date and Month all move individually. The card is often sent for someone’s birthday.

The last calendar PC is French. The soldier could keep track of how many days he had remaining to serve. It’s very colorful with its hats, caps, horns, bomb shells and drum.



WORKHORSE LOCOMOTIVES 1920-1930-1940

GREAT NORTHERN



UNION PACIFIC



SOUTHERN PACIFIC

