

# The Card

Volume 10,#2, Whole Number #110  
February 1999

MONTHLY PUBLICATION OF  
THE LANCASTER COUNTY POSTCARD CLUB  
LANCASTER, PENNSYLVANIA

Meets 3rd Monday, Farm & Home Center, Rtes. #30 and #72, Lancaster, Pa.  
NEXT MEETING: February 15, 1999 at 7:00 pm, Trading from 5:30

Yearly membership is \$8 (\$2 extra for each member at same address). Membership year is April 1 to March 31. Make checks payable to: LCPC c/o Dorothy Fry, 1050 Kleinfeltersville Rd., Stevens, PA, 17578. Advertisements are \$15 full page, \$8 1/2 pg., \$5 1/4 pg. prepaid with copy. Ads of 25 words or less are FREE to members but please submit your ad for each issue 30 days in advance. Send all correspondence and change of address to Jim Ward, editor, 1795 Kleinfeltersville Rd., Stevens, PA, 17578, phone 717-721-9273. THE CARD staff includes Dorothy Fry, proof reader and Gerald Hostetter. Harold and Ruth Moyer are the mailing committee. Recent circulation included 13 postcard clubs, 4 postcard publishers and 225 homes with nearly 300 members.

## REWARDS OF MERIT

### 1998 Contributors to THE CARD

At the January meeting Editor Jim Ward paid special recognition to members who helped make 1998 another successful year for their monthly newsletter. He emphasized that **THE CARD's** readership includes far more than the members who attend our monthly meetings and, in fact, is largely due to the variety of subjects presented in their monthly publication. This is due, in large measure, to the contributions made either as featured articles or as spontaneous offerings of postcard info they've discovered.

To all of those members listed below, a special **THANK YOU** from the membership, **THE CARD** staff and in particular, the editor.

A variety of old fashioned Rewards of Merit cards were reproduced in full color and given or mailed to the contributors.

### 1998 contributors

#### Gerald Hostetter

Feb. - Lancaster Lovers checklist  
Sep. - Local Dexter checklist

#### Dee Delcher

Apr. - Founding the First Mon. PC Club of Balt.  
Oct. - Compliments on our "Windows" book

#### Frank Coho

Apr. - Response to Amish-Mennonite story

#### Alma Eby

Apr. - Response to Amish-Mennonite story

#### Paul Smoker

Apr. - Response to Amish-Mennonite story

#### Jim Rudisill

May Feature story "Woman Painters"

#### Earl Carver

May - NPW postcard entry

#### Betty Weaver

May - NPW postcard entry

#### Stan Hopkins

May - NPW postcard entry

#### Anne Valsing

May - NPW postcard entry

#### Joe May (Windy City exchange editor)

June - 50 Years of Windy City Postcard Club

#### Dot Fry

July - Pennsylvania Dutch 'n Stuff TV show

#### Harold Moyer

July - Pennsylvania Dutch 'n Stuff TV show

#### Bill Selgford

July - Rent-a-Wreck postcards

#### Bill Wolfensberger

July - 1968 New Era story of local collector



Sample of one of the Reward of Merit cards.

#### Brian Frankhouser

Aug. Feature story on Zeltenreich Church  
Sep. - N.H. publisher of Denim Blue PCs

#### Leon Rowe

Aug. - Organize bus trip to Metro PC show

#### Dolores Rowe

Aug. - Organize bus trip to Metro PC show

#### Peg Hanna

Oct. - The Old Leatherman postcard

#### Bette Davis (WC4 exchange editor)

Oct. - Compliments on "Windows" book  
Dec. - Response with auction postcards

#### Newlin Groff

Nov. - Jessica Ann Shaub's auction postcard

#### Lorraine Singer

Nov. - Inspiration for corn exaggeration PC

#### Joe Ruhl

Nov. - Inspiration for Outcault football PC

#### Joe Motonis

Nov. - Gift of long Welsh name card

#### Bert Cohen

Dec. - Inspiration for Maceration PC story

## ROSTER FORM

With this issue you'll find a Membership Renewal Form. Each member should fill this in with current information and return with check for 1999-2000 dues. The up-dated information will be part of a new Membership Roster which all paid-up members will receive in August.

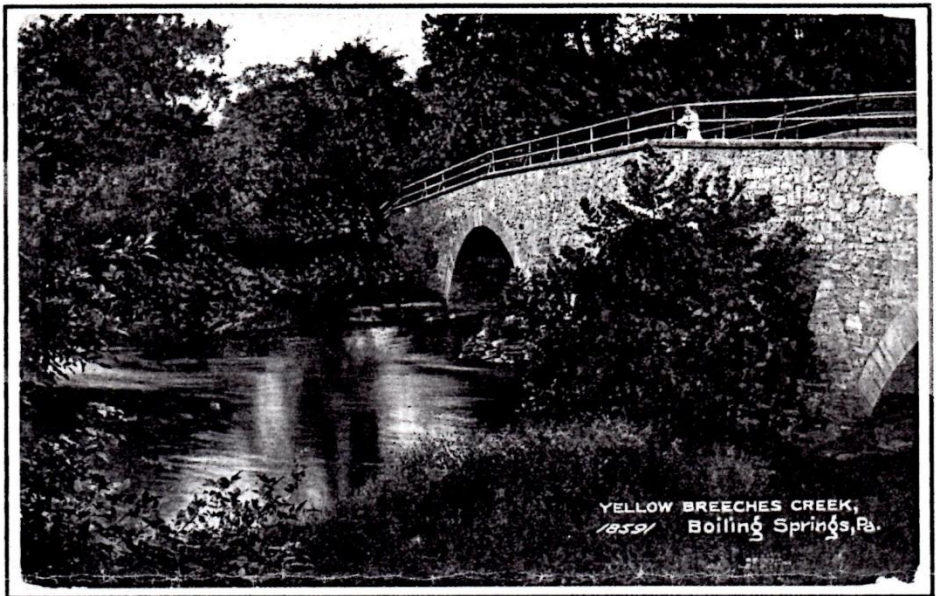
Please submit both the form and your check as soon as possible. It makes the work of volunteer members so much easier. Each member at the same address should fill out a form but you may combine dues in one check. Thank you.



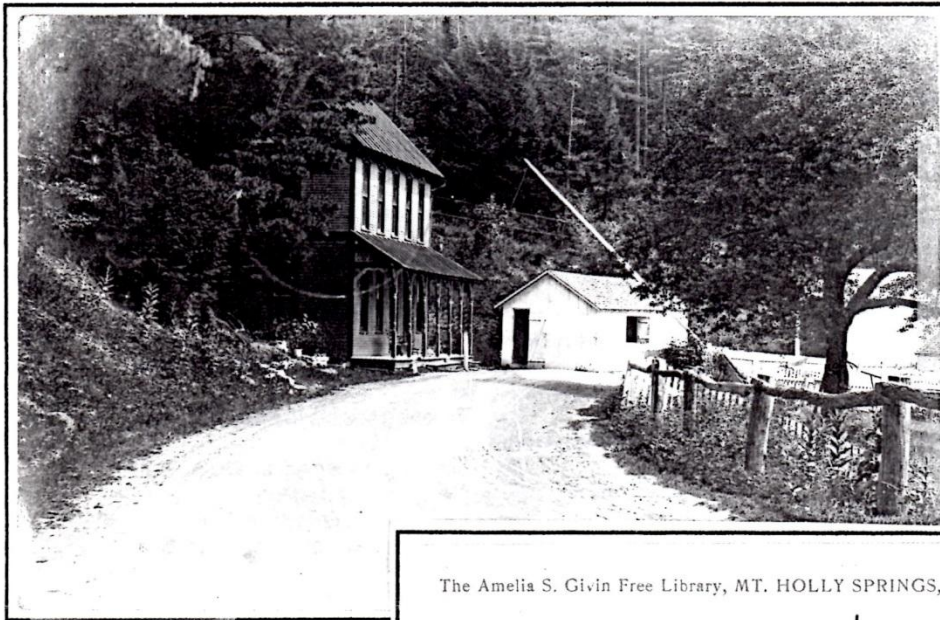
## YELLOW BREECHES - Newest Member of PA.'s Scenic River System

Ray Bubb showed us his WWII life on postcards in a 1998 program. With these three PCs we get a glimpse of another facet of this birder's life. A section of the 56-mile long Yellow Breeches Creek in Cumberland County is Ray's playground nearly every week of the year.

Streams, stocked with trout, in PA. close Feb 28 and reopen the middle of April (4/17 in 1999). There are a number of special regulation areas. One is the Yellow Breeches downstream from the Boiling Springs bridge (PC#1). This is a one mile "catch and release" section. Only barbless, artificial lures such as spin-



YELLOW BREECHES CREEK,  
1859/ Boiling Springs, Pa.



the Romanesque Revival was built in 1889 by Miss Given after she inherited \$10 million in her parents' estate.

Like more information on catch and release? Call Ray at 569-7155.

Now how about a bird program, Ray, from you and or Shirley?

The Amelia S. Givin Free Library, MT. HOLLY SPRINGS, Pa.

10481

ners and flies can be used. The area is clearly marked by cables across the stream and with posted signs. "I fish both up and down stream from the bridge" Ray says. Downstream is my favorite area since it's open year round and it's 'catch and release' which I practice whenever I fish."

Just beyond Deer Lodge, along Rte. #34, south of Mt. Holly Springs, is a small sign marking the springs. A short distance from the springs is an historical marker for the old toll gate and house (PC #2). That stream is Mountain Creek. It is also stocked with trout.

Ray's regular jaunts take him to the town of Mount Holly Springs where the stately Amelia S. Given Free Library is located (PC #3). The brown limestone edifice, typical of







This chrome card, published by John Mull of Hershey, is a reproduction of the Hershey Chocolate Company ad from the turn of the century when Hershey Chocolate was operating in Lancaster, PA. The full color image is the exact size of an early trade card by Koerner & Hayes of Buffalo, NY. In part, the reverse of the original TC reads "Indigestion hath power to mar the soul's serene hour."

Moral: Drink Hershey Cocoa instead of tea or coffee."

## AUCTION ACTION

Though it was only a 60-lot sale, LCPC thanks the bidders for providing \$43.45 for the treasury. \$20.20 was 10% of the receipts and \$23.25 from the donated lots.

Also, THANKS to Valerie Refi, Walter Mowrer, Bob Kramer, Jere Greider and Brian Frankhouser and the apprentice auctioneer. Lots followed by price realized.

A-2	12-1	30-3	47-6
B-1.25	13-1	31-1	48-2
1,2-11	14-1	32-2	49-2
3-4	15-1	33-5	50-5
4-1	16-3	34,35-6	51-16
5-3	17-1	37,38-3	52-44
5A-2	18,19,20-1	39-2	53-30
(donated above)	21-3	40-1	54-2
6-2	22,23-1	41-2	55-1
7-2	24-1	42-1	56-1
8-1	25-1	43-8	57-1
9-1	26-2	44-3	58-1
10-1	27-2	45-4	59-16
11-2	28,29-3	46-1	

## FEBRUARY PROGRAM

### EARLY, SCARCE HERSHEY CARDS

#### Neil Fasnacht's Slide Show Will Include Dozens of Hershey Real Photos Cards

Member #355, Neil Fasnacht, is a typical "home-town squirrel". He loves finding anything connected with Hershey, PA., "especially if it's early Hershey paper".

Neil's collection has long since accumulated 95% of the newer, more common cards (there's always that one card that no one ever saw before) so we'll be entertained and informed with only the rarest from Neil - the cream of the crop in postcard views of this popular Pennsylvania community. Some of us recall an earlier Hershey program that concentrated on the narrow Hershey bar-size cards that were used as the under lying pad for the early Hershey bars. There may be one or two of these, but Neil reminds us that his is a much more comprehensive look at Hershey postcards (with maybe even a trade card or two).

This is a program you won't want to miss. If you have any early Hershey paper items you'd like to know more about. Neil's the man to find your answers. Bring them along. He's also a very enthusiastic buyer and pays excellent prices for items he doesn't have. Bring along any early Hershey paper you're willing to sell and both you and Neil will be happy.

## NEW MEMBER

**CYNTHIA M. WHITMORE #520** 514 Ashton Pl., Lititz, PA. 17543. Ph. 569-5190. Cynthia has inherited "Scoop's" New Holland collection and intends to continue with it as well as collect Christmas and perhaps new fields. It was good to see her at the Jan. meeting and hope she and husband Eric will visit often.

## EDUCATIONAL AWARDS

### Pres. Recognizes 1998 Speakers

At the January 1999 meeting Past President Jim Ward took a few moments to recognize individuals who made major contributions by offering programs to LCPC. Each spent considerable time and expense to make our hobby more enjoyable by sharing their interest and enthusiasm. To each the club owes a big THANKS.

The Rewards of Merit they receive are small but the THANK YOU they represented is warm and grand.

#### RAY BUBB (February)

My Life in World War II on Postcards

#### DON DAVIS (March)

Humor on Postcards

#### JOE EPLER (May)

College and High School Girls and Pennants

#### LEWIS BECHTOLD (July)

135th Anniversary of the Battle of Gettysburg

#### JIM WARD (Sept.)

Details of publishing "Windows to Our Past"

#### ANNE STEINBERG (Oct.)

Teddy Bears on Postcards

#### DICK JULIAN (Nov.)

World Wide Lighthouses

#### JIM MORRISON (Dec.)

The National Christmas Center

Jan. and June meetings were multi-member programs while April was auction night and August was open sales.



## ONCE IN A BLUE MOON

The E.C.Kropp card #22176 reminds you that if you missed seeing the *two full moons* in January, you have a second chance, not in February - there'll be no full moon - but in March when we'll see *two more full moons*!

A second full moon in the same month is referred to as a blue moon. It doesn't happen often. Remember the phrase "once in a blue moon"? It means rarely, not very often. "I seldom see those folks any more, maybe once in a blue moon."

Member #385, Gerald Lestz, says in his 1999 almanac\*, it's "the first time since 1980 the month of February will not have a full moon...These blue-in-name-only moons get a lot of attention."

"If you haven't sat down with a good almanac in a few years, you deserve a year with Baer's Agricultural Almanac & Gardener's Guide. The 98-page reference is celebrating its 174th year! Jerry is the owner of John Baer's Sons publications. For a copy plus listings of dozens of other Baer books, send check of \$3.74 (incl. shipping) to John Baer's Sons, P.O. Box 328, Lancaster, PA 17608. Copies are also available from member #7, Bernie Heisey, at his Root's Market stand as well as at newsstands and book stores. (An unsolicited item.)



Reproduced from an original painting copy-righted by Jos.S.Cullison, Norristown, PA.



The Moon, 8½ days old,  
Photographed with the 40-inch Telescope,  
Yerkes Observatory, University of Chicago  
Williams Bay, Wisconsin.  
The diameter of the Moon is 2,160 miles.

## SYMBOLIC LINCOLN Modern Metamorphic by Dexter

More than thirty years ago one of Deltiology's pioneer researchers, James L. Lowe, published the Lincoln Postcard Catalog. LCPC's library has a copy and if you have more than a passing interest in Lincoln postcards this is your best source. Dr. Lowe offers a checklist of thousands of AL PCs as well as a price guide. Readers are reminded, however, the prices are over 30 yrs. old.

Lowe's catalog *does* include the chrome card shown here, Dexter Press, Inc. #21402-B. He notes that a continental size card also exists.

Metamorphics were popular during the golden age of postcards. They were usually faces of noted personages, the real photo cards being the most expensive. Often the countenances were composed of nude women, mythological figures and statues. Even though it's a modern chrome, Symbolic Lincoln commands a value of \$10 because of the popularity of our 16th President. Many golden age Lincoln cards can still be had from a dealer's 25¢ or 50¢ box.

Aside from the General Lee and General Grant eyes, you'll find the country's map, eagle, Union and CSA flags in his forehead, "Gettysburg" for his beard, as well as Lincoln's birthday, homestead and home state.

Can we presume, knowing his personality, that Abe would have found this likeness both humorous and ingenious?





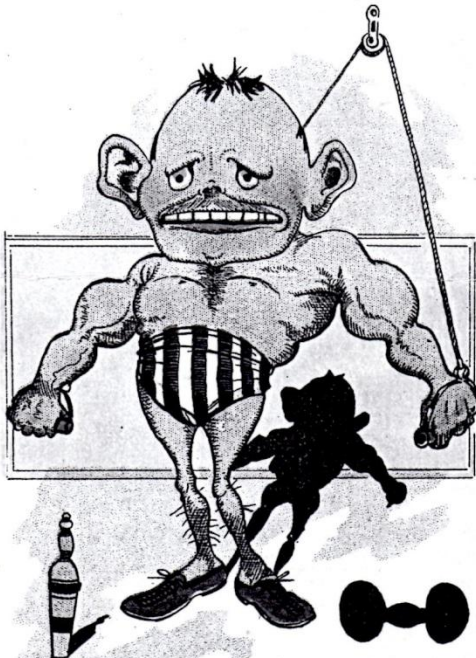
#### YOUR WIFE OUGHT TO KNOW OF THIS.

See here, you old sinner! I send this to show  
That your sly wicked doings I perfectly know.  
Your wife suspects nothing, poor innocent soul,  
But if you keep on, I will tell her the whole;  
So you'd better stop short, and not be so gay,  
Or you'll find it expensive the fiddler to pay.



#### MAMMA'S DARLING.

Here's your Photo, Mamma's dear,  
This is just how you appear  
When you're washed, and combed, and dressed,  
So that you look your very best.  
At your house, so people say,  
No looking-glass can last a day,  
Unless they outward turn its back,  
So your face won't make it crack.



#### YOUR ATHLETIC PIPE-REAM.

In this picture you can see  
A dream and a reality.  
In arms and chest are muscles shown  
Such as you'd like to think you own;  
While those you really have to show  
Are pictured in the legs below.



#### 10 CENT STORE BROKE LOOSE

What a jewel I you shine with your form studded o'er.  
As a walking show bill of a "10 CENT STORE"  
Such beauty and taste all those ear-drops disclose,  
Tis a pity you did not put one in your nose.

It sets my heart sighing quite sad and forlorn.  
To think they're as bogus as her they adorn.  
'Tis the "sweet buy and buy" with you o'er and o'er,  
As you call at that beautiful "10 CENT STORE"



## Life in Roxie's House

### A little girl's home over 60 years ago.

**ED.NOTE:** Some collectors *never* read postcard messages. Some collectors read all of them. Several postal cards (no pictures = government printed) captured my attention and I'd like to share them with you. All are postmarked from Huntingdon, Pa., from January to March, 1937 and written by Aminta.

**January 9** Everything is moving pretty smooth. I made Roxie's dress and Joe's - can't get the collar to fit Joe's. Dyed my dresses and Lawrence's pants today. Joe and I were over town once. We may go over tomorrow. I almost got a cold but took Lawrence's favorite prescription and some soda and forgot about it. Roxie says Fannie and Mini are making Baby Jerrie a new dress. I hope you are better Mini.

**January 24** We arrived OK about 2 o'clock yesterday. I greased Roxie very well last nite and she slept just fine until six o'clock. Then she made us get up so she could play with the baby buggy. She just keeps changing the toys and wheeling them around. She drank her milk and ate enough breakfast for two kids. She can even sing. She wants onions, meat and mashed tatoes for dinner.

My heart is practically normal now. Wine is what I needed. Lawrence got me a gallon yesterday in Bedford. Nick was so glad we got home he went out and got ice cream at Roxie's request. I hope Aunt Min continues to improve. I am going to roast the ham for tomorrow. Lawrence feels OK today he ate three eggs for breakfast. Mother, take care of "Cutie". Dad, watch Dick.

**February 13** I don't know for sure if we will be over Sunday. It all depends on what Dr. Deschele says. I had a cold and it settled in my right eye. My eye was shut and I had lost my voice. I could squeak a little. My nose was badly swollen. I went to the Dr. yesterday morning and he gave me drops to put in my nose and eye every three hours and I have to wear dk. glasses. My left eye is much better today. It will take several days for it to clear up and I must be very careful not to catch a cold.

Mrs. Roberts was over all day Tues. and Katherine was here in the evening also. We had a very nice time outside of my eye hurting. Roxie is crazy about Katherine. She played with her and went to sleep on her lap. I hope Dad is well now and Mother and all you folks. I got Aunt Min's sweater. It is a Dusty Coral just like mine.

Don't look for us Sunday. I am a little afraid I might catch cold. My eye has been very painful. I got my medicine from Dr. H.A. today. All Lawrence and Roxie do is look at the Sears and Montgomery (catalogues).

**March 13** Don't expect us Sunday. Don't expect to get over. Lawrence has a little business to tend too and I haven't been feeling very good the last few days. Tell Min I think I will bring her girl over and give her to her for a week or so. She is always talking about coming home. Hope some of you fellows will come over Sunday. Roxie still talks about the little "spotted pony", but NO mule. We expect to come over good Friday if the weather is

*Continued on next page.*



**WHAT TOWN IS THIS?** We believe this is a local community and ask your indulgence in studying and identifying the town. Two three-story buildings near the center intersection might be a clue as well as the adjoining parking lot and baseball diamond. To the far left is a smaller 3-story building, possibly a school.



## Member Publishes Art Frederick Yohe Continues His Series of Handdrawn Postcards

Few of us have the ambition to follow through on our convictions. Frederick Yohe does. LCPC's member from York County began drawing his favorite subject CATS years ago. He quickly found a medium, POST-CARDS.

Issues #12 and #13 were presented to **THE CARD** during the recent holiday season and we here offer DADDY'S HOME for your pleasure. The latest two

PCS were inspired winter scenes by the 19th century printing firm of Currier and Ives. The second scene is A RIDE IN THE SNOW. Fred was inspired by the 'wonderful less complicated times of these bygone days'.

Fred's painting technique involves wiping away some paint with a wet paper towel rather than blending colors. He signs all postcards on request.

Other cards he has completed (and offers for sale) include domestic cats, lions, chickens and a set of six of colonial York, PA. The full-color PCs are printed by Modern Postcard, Carlsbad, CA. More info. is available by writing to Frederick Arthur Yohe, 237 S. Pleasant Ave., Dallastown, PA., 17313, Ph. 717-244-5978.

February 1999, pg. 7



*Continued from previous page.*

permissible. I am still too hoarse to do much singing. My cold seems to stay in my throat. Lawrence did not work yesterday. He had an earache so bad. His cold has settled in his ear. I hope you fellows are all feeling OK now. Roxie got up at 6 o'clock this morning. She can help to milk Blackie.

**March 16** I am feeling much better than I did last week. Today I feel fine. I got a check from The "Spud Cigarette" Contest for \$5.00 this morning. I will bring it home on Good Friday. I want Dad to see it. You know, Dad, you said you would cover it. Ha! Ha!

I had a very nice dinner for you fellows yesterday. I knew you wouldn't be over when I saw the weather. Ruth was over to see me Friday nite. Her husband is an aviator. Roxie said if you make Topsy come home and the "little spotted pony", she will let Sweetie Pie stay over for company. She said Minnie can play with Sweetie Pie.

Hope you fellows are well. Roxie put lipstick all over her face this morning before we went to town. She said Aunt Fannie gave it to her. I saw her spit behind the radiator. I ask her who did that. She said she saw Evaleen do it. Soon as the weather gets better we will be up a week. Take good care of yourselves. The weather is pretty bad.

## OLD LEATHER MAN follow-up

In issue #106 (Oct.1998) we referred to a postcard showing The Old Leather Man with a written message that he "used to pass through Boston on his route of 360 miles- 240 in Conn., 120 in New York (state)."

Dot Fry (retired one-room school teacher and member #59) has an eclectic library and a memory to match. She showed me a children's book *The Leatherman* by Dick Gackenbach, (Seabury Press, NY). There was a real Leatherman! On one of his journeys he lost identification papers which revealed these facts.

He was of French birth and after an illness and loss of his leather business during the great depression (mid 1800's) he arrived in America.

His strange travels, which commenced in 1859, continued for thirty-one years. Only during the great blizzard of 1888 did his timetable fall back four days. In 1889 he was found dead in a cave near Mount Pleasant, New York. In 1953 a stone was set over his pauper's grave in Ossining, NY. It reads "Final Resting Place of Jules Bourclay of Lyons, France. The Leatherman."

As Paul Harvey would say, "And now you know the rest of the story". Once again we thank Dot Fry.



# 220 = 8

**Figures are often the best way to make a point and our equation above does that.**

For the year 1998 THE CARD has offered its readers what its staff believes is one of the best bargains in postcard club reading. The 12 monthly issues of 8 pages each have been crammed with general and local interest topics, in all, thirty-five.

## These 20 subjects were of general interest

Multiple Babies	Tigers
Castle Neuschwanstein	Ono, PA.
Kemp Amish Sketches	Irish Myths
Temperance Messages	Grigg Elongated Cards
Woman Painters	Lyman Seeds
5 Bugler Bay Messages	4 Wanderlust Messages
95 Yrs./Harley-Davidson	Gettysburg Battle-135 Anniv.
RP Labor Day Views	Drive-Thru Big Trees
Long Welsh Names	The Old Leatherman
Long Mass. Name	Macerated Money

## 15 subjects of local interest (x = w/checklist)

Stevens House (x)	Lancaster Lovers (x)
Grandview Heights	Member NPW Cards
Amusement Parks	New Lyndon Diner
Pa. Dutch n' Stuff	Lincoln, PA. - 185 Years Old
Zeltenreich Church	Rough and Tumble (x)
Local Silvercraft Views	Historic White Chimneys
331-37 N. Queen Street	Auctioneer Postcards
New Gap Tower card	

The thirty-five subjects were further enhanced with no less than 153 illustrations using full-size postcards and 32 smaller cards to boot.

You do the addition:  $20 + 15 + 153 + 32 = 220$  and those 220 cost you only \$8 for your subscription including \$3.84 in postage **plus** free postcards **plus** info. about club activities.

enough also enjoy our club activities at monthly meetings, our August show, the summer picnic and Christmas Party.

**Before you forget, send your check in today for your renewal. Your dues will include membership from April 1, 1999 to March 31, 2000. \$8 per member plus \$2 for each additional member at the same address.**

**NOTE: Even with the postage increase we will keep dues at \$8 as it has been since 1995.**

## WINDOWS UP-DATE

Ray Dennis reported the Pa. Sales Tax for book sales in 1998 has been paid. Currently members have for sale the remaining 550 books. Sales continue to be brisk. We've avoided expensive advertising the last few months. The key is to let a prospective buyer see the book for ten minutes and it generally sells itself. See the January **CARD** for members with books or call Ray at 290-7948.

## FUTURE SHOWS

BELMAR, NJ. MAR. 6, John Taylor Pavilion  
MOUNT LAUREL, NJ. MAR. 12-13, Days Inn  
LANCASTER, PA. MAR. 6-27, Farm & Home Center

## LUCKY ATTENDEES

Norman Zimmerman went home Jan.'s 50/50 winner; Eric Mylin and Brian Frankhouser won the door prizes = 100 PC sleeves and 10 PC pages.

## MONTHLY EXHIBITS

The mid-winter thaw was in our favor for the January meeting but a prediction of streams over-flowing and possible icing of roads after dark had a toll on the attendance and only 46 were there for the debut of our new President Susan Glass's term.

The entries for January's INTERIORS were also limited, nevertheless we enjoyed these five members' efforts:

RUTH MOYER	FIRST	Humorous Interiors
EARL CARVER	SECOND	Amish Interiors
HAROLD MOYER	THIRD	Dining in Lancaster

## HONORABLE MENTIONS

NORMAN ZIMMERMAN	Been There
JIM WARD	City Church Interiors

Surprise! Surprise! Susan's new Directors voted to raise monthly exhibit awards, so beginning with Jan. winners, first place will receive \$5, second \$4 and \$3. The increase has a two-fold purpose: help off-set expense of boards and corner tabs and add incentive.

February's subject will be **PRESIDENTS**. This is a tentative list of future subjects: Mar.-St. Patrick's Day, Apr.-letter "C", May-Decoration/Memorial Day, June-Animals except birds, July-The Fourth, Aug.-Birds, Sept.-Harvest, Oct.-Famous People in History, Nov.-Service-men and women, Dec.-Christmas.



VALENTINE  
GREETINGS

To redeem ourselves for the Vinegar Valentines you viewed on the previous page, THE CARD staff wishes you a Happy Valentine Day with this beautiful art deco card by Whitney of Worcester, Mass.