

THE CARD – Vol. 26, No. 10, Issue 299, October 2015

A Publication of the Lancaster County Postcard Club, Lancaster, PA

Enjoying postcards through education and entertainment.

Next Meeting – October 19, 2015. Farm & Home Center. Buy, Sell & Trade from 5:00. Meeting - 7 PM

Like us on Facebook – www.facebook.com/LCPClub

SEPTEMBER MEETING

President Susan Glass called the meeting to order at 7:00 p.m. All rose to say the Pledge of Allegiance. Guests included Jere Long, Barb Balmer, and Ken McClain. Betty Beck read the minutes and they were approved as read. Barb Mower gave the Treasurer's Report. During August, the Club had \$1,482.97 in expenses and \$4,144.25 in income. The Club's balance is 8,667.50

Jere Greider thanked club members for helping with the setup, almost completely done by Brian and Ruth Frankhauser. Walt and Barb Mower helped out all day. Thanks goes out to all members who helped in many ways to make the show a success. There were 197 people in attendance and the Club cleared \$1,510.54. There was a full house of 25 dealers with no concerns or complaints.

The highlight for the Club was the sale of Jim Rudisill's cards at the show by Jere with the proceeds of \$719.75 being donated to the Club. THANK YOU JIM!

For the evening's program - former president Bob Zink featured excellent real photo cards of the early days of Mountville. Bob gave the club quite a show with a variety of scenes of early 20th century baseball, schools, churches, industries and nursing homes.

The door prizes (postcard books donated by the James Tanis estate) were won by Barb Heim and Ruth Moyer. Maria Schurz won \$10 in the 50-50 drawing.

WILLINGNESS TO SERVE FOR 2016

2016 will be here faster than we wish and it's that time of year to start finding club members to serve in leadership roles next year. Anyone can help by volunteering to hold an office, help with the club table, and help with the monthly competition. Positions available will be announced at the October meeting. Consider what you are willing to do for the club in 2016 and volunteer!



OCTOBER PROGRAM

Jere Greider will be presenting the program entitled "This & That Coca Cola Postcards"



Future Programs

November: Backsides of Postcards – Carl Hellman

December: A Journey Down Memories' Lane – Ross Morrison

POSTCARD COMPETITION

Eight people participated in the single card competition on the subject "Real Photo Card".

First: Walter Mowrer Tearing Down Bridge at Chickies

Second: Barbara Heim Some Mutt

Third: Betty Beck My Grandfather

Additional Participants:

Maria Schurz – Bike Race, Bud Heim – Trestle at Chickies, Dick Pendergrast – Kids on a Porch, Don Tribit – Store, Schaefferstown, Susan Glass – Peachbottom Ferryboat

FUTURE SUBJECTS

October: Trolley Cars – single card

November: A Favorite Linen Postcard - single card

December: Just for Laughs - board

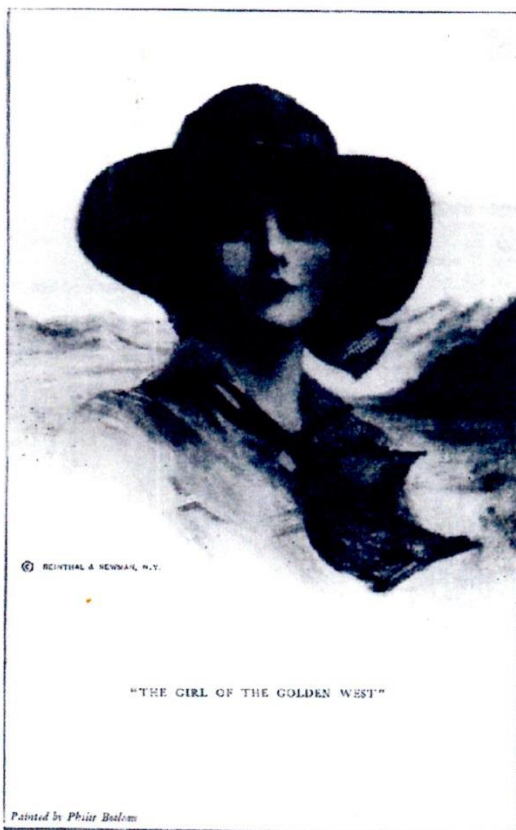
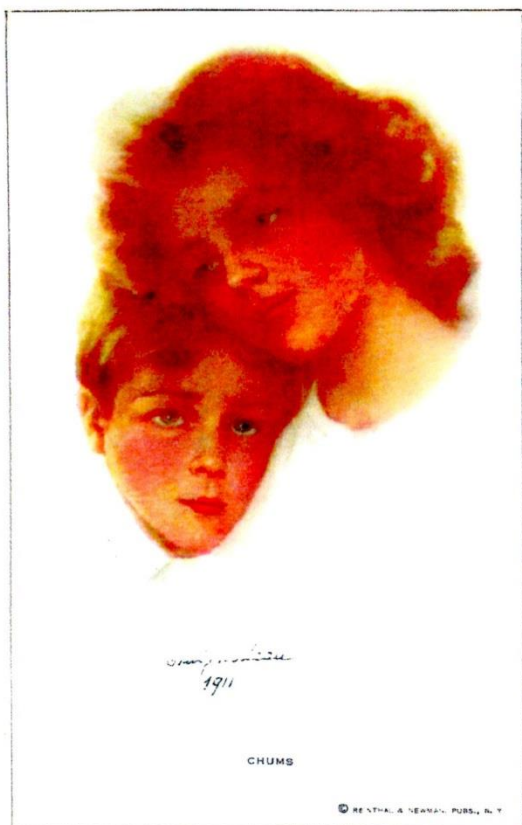
FUTURE SHOWS

October 18 – The York Bottle and Advertising Show, York Fairgrounds (Old Main Building), Sunday – 9 to 3, admission \$3.00
November 20-21 – York International Postcard Expo, York Fairgrounds, York, PA - Friday 9 to 7, Saturday 9 to 5, admission \$5.00

November 27-28 – Lancaster Fall Postcard Show, Farm & Home Center, Lancaster, PA - Friday 10-6, Saturday 10-4, admission \$2.50



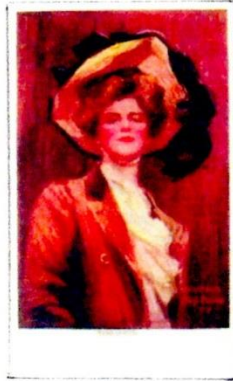
Philip Boileau
1863 - 1917



Considered one of the most popular artists of fashionable women, as well as children, Philip Boileau's * postcards were printed between 1905 and 1917. Born in Quebec, he would learn his skills in Europe but return to the US where his talents would be recognized.

It was the printing firm of Reinthal & Newman that undertook to issue the majority of Boileau's postcards – over 100. Tuck also published for him.

*Pronounced "swallow" with an accent on the last syllable.



In 1907 the "Peggy Head" came to be his most famous model. It is attributed to Emily Gilbert, his young wife (half his age). She appears in so many of his paintings that became postcard images.

Here we see some of his PC art; among them, The Girl of the Golden West, Chums, Whispering Love and With Care from Home.



Jim Ward

SUPPOSE ...

Just suppose you were a teacher in a 1-room school and this page of kids were your pupils. And, in realty, many rural parochial schools still have such a mixture. Meanwhile, enjoy the sentence or two we've discovered about the artist's who've drawn these youngsters.

Jim Ward



Clara M. Burd - Little Miss Muffet is a design on a blotter, not a postcard. Burd's postcard children appeared in fairy tales, but those more easily found are on Rally Day and Sunday School postcards.



Dwig (Clare Victor Dwiggins) - This artist must have imposed the nickname on himself. Clare Victor just didn't fit the outrageous (and often rude) adult situations we see on his PCs. He had several long series incl. The Wurst Girls, Smile, Never, Don't, etc.. These kids are from the long If series.



Katharine Gassaway - This Is So Sudden. Katharine worked for numerous publishers including Tuck where, oddly enough, her distinctive, boxed signature is lacking. Her work was largely from 1906 to 1909.



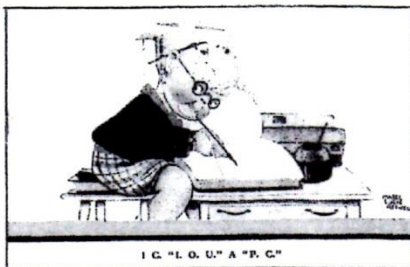
H. B. Griggs - You Whose Birthdays Are Too Few. The artist did an equally fine job with adults as well as children, often on holiday postcards. There's an enigma here - we know so little about the artist, we don't even know *its* sex!



Hamish (Jas. Allan Duncan) - Ho-Ro, My Nut-Brown Maiden. Hamish also signed his PCs as J.A.D. and as Hamish Duncan. As the name would suggest, they're largely Scottish - landscape and romantic comics.



Berta Hummel - A graduate of the Munich Academy of Applied Art, Berta entered a convent and, as Sister Maria Innocentia Hummel, sold much of her artwork in the form of postcards for the benefit of the convent. In 1934 Goebel discovered her art and began the long line of Hummel porcelain figurines and plates.



Mabel Lucy Attwell - The accountant spells out - with all initials - his current debt. Mabel Lucie, as she's affectionately known in England, drew mainly for Valentine & Sons. Princess Margaret commissioned her to make her 1937 and 1938 Christmas cards.