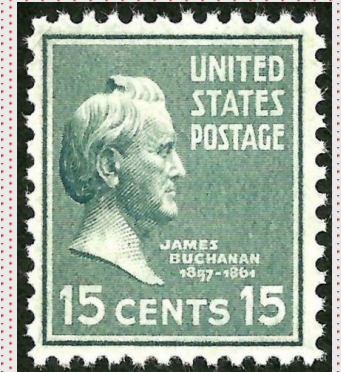
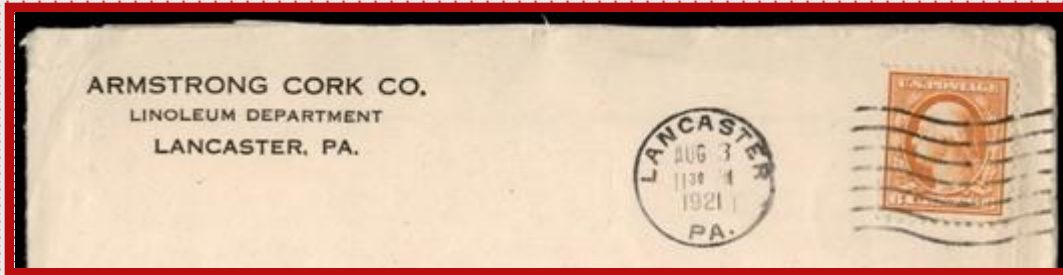


1928 Fourth Bureaus on Special Booklet Paper



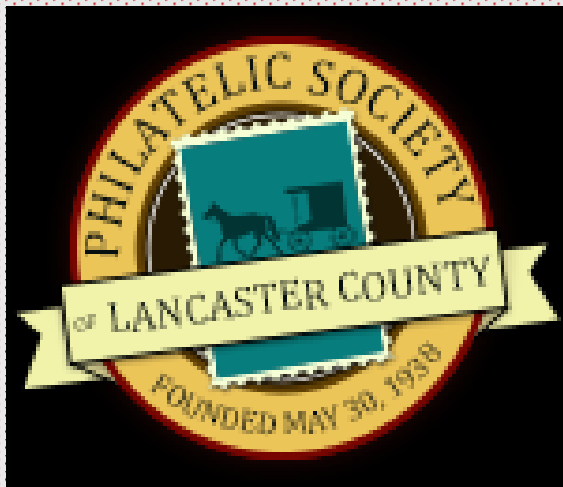
Wednesday, August 26, 2020

Robert G. Rufe, President

Brandywine Valley Stamp Club

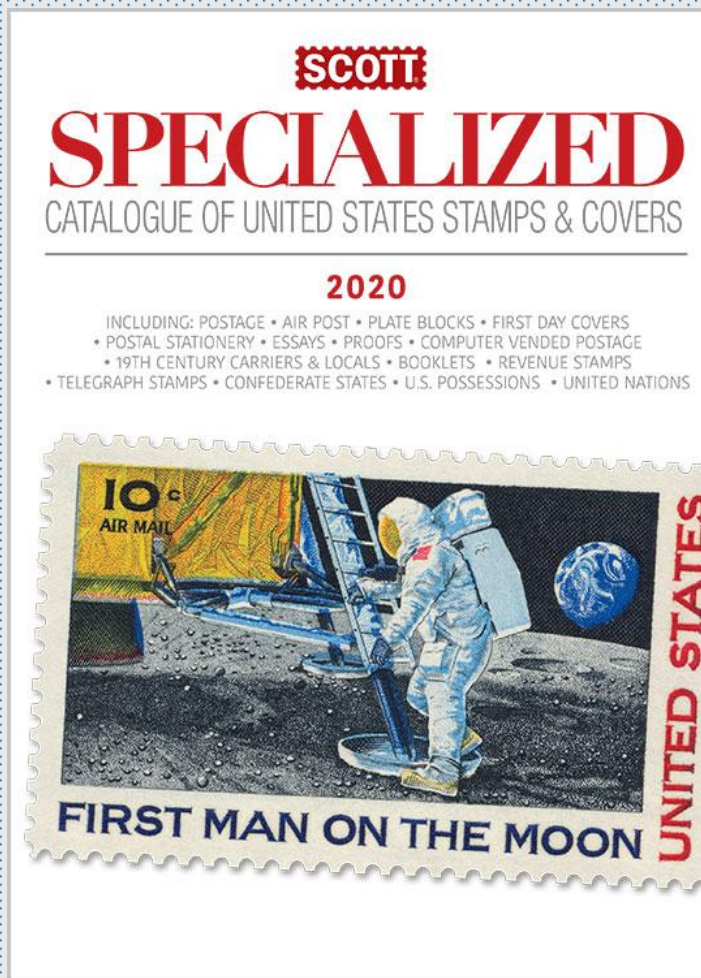
rrufe1@aol.com 302-354-8582 (Cell)

SpecialHandling.Weebly.com



Just Out Last October... 2019:

The 2020 Scott Specialized Catalogue



And with it...
My first centerfold!

2020 EDITION SPECIAL FEATURE

1928 Era “Special” Booklet Paper Variety Stamps

Now listed in the Scott catalogue

The following represents about ten years of effort.

Placed with the Fourth Bureau Listings:

66

2020 EDITION SPECIAL FEATURE

1928 Era "Special" Booklet Paper Variety Stamps Now listed in the Scott catalogue

Robert G. Rufe

THE STAMPS: There are eleven popular U.S. issues, specifically Scott Nos. 563, 564, 566, 567, 568, 569, C11, E13, QE1, QE2 and QE3, with well-documented paper varieties that are relatively unknown to the general collector. These same paper varieties, however, have long been included in most exhibits of the series in which they appear – the Fourth Bureau definitive series, the Beacon Air Mail, and U.S. Special Delivery and Special Handling issues. The newly listed stamps within these pages will carry the following numbers: 563b, 564b, 566b, 567b, 568a, 569a, C11b, E13a, QE1b, QE2b, QE3b.

INTRODUCTION: Eleven varieties of well-known U.S. stamps are added to this year's edition to recognize their production for a limited period in 1928 on "Special" Booklet Paper. This "Special" paper consisted of leftover flat sheets of paper from stocks specified, purchased and intended for booklet pane production by the Bureau of Engraving and Printing (BEP). The newly-listed varieties are readily identifiable, and many collectors have recognized these stamps and added them to their collections since first reported by Hugh M. Southgate in 1940.

After the last print run of booklet panes on the flat plate press (the Lindbergh booklet pane, Scott C10a),

the BEP had significant remaining inventory of "Special" Booklet Paper. These remnant booklet paper stocks were redirected to ordinary sheet stamp production on flat plate presses. All subsequent booklet pane production was on rotary presses. The C10a booklet stamps were last at press on April 10, 1928, and the first sheet stamps to utilize "Special" Booklet Paper, the new Special Handling service stamps, first went to press on June 22, 1928.

BACKGROUND: Why the "Special" Paper? Sheet stamps were printed on paper whose normal grain orientation was vertical, meaning that after stamps were printed on moistened paper, the designs had a tendency to shrink horizontally as the paper dried. Stamp paper shrinks approximately four times more across the grain than with the grain, meaning that sheet stamps shrink more horizontally than vertically. Accordingly, for producing booklet panes, the BEP ordered "Special" Paper with the grain running horizontally, to assure greater stability in the horizontal dimension.

RATIONALE FOR LISTING: Definitive stamps which have been printed AND issued in both sheet stamp and booklet formats have traditionally carried major and minor catalog numbers, respectively. However, sheet



Figure 1. Horizontal dimension comparison of "Special" Booklet Paper (top) vs. regular orientation paper (bottom). These are the three Fourth Bureau "ordinary" stamps in vertical format, 563b, 564b and 566a.

67



Figure 2. The three horizontal format stamps are turned 90° for consistent comparison with images in Figure 1. In this orientation, the "Special" Booklet Paper varieties (upper blocks) are again wider than the regular paper stamps (lower blocks). In their conventional horizontal orientation, "Special" Booklet Paper varieties of these three horizontal format stamps are very slightly narrower than their corresponding sheet stamps.

stamps printed on "Special" Booklet Paper but NOT issued as booklets have not previously been listed. The newly listed paper varieties are recognizably different from their sheet stamp counterparts, and the identification guidelines which follow will highlight the differences.

HISTORICAL DEVELOPMENT: The BEP had gone to great lengths to improve centering of images on booklet pane stamps by specifying paper properties that would control shrinkage of central design images. Their solution was to print booklet stamps on paper with the grain orientation turned 90° to control shrinkage, improve centering, and keep booklets in registration as they were interleaved, covered, bound stapled and trimmed.

The BEP demonstrated its frugality by using remnant paper when flat press sheet supplies were no longer required for booklets as booklet production was transitioned to the rotary press. Somewhat analogous to Coil Waste issues, these eleven sheet stamps were produced from "Booklet Remnant" paper stocks as a cost and resource savings measure. Since the "Special" Booklet Paper varieties were not discovered until about ten years after their production, most of these stamps were used for routine postal purposes. Southgate did not report on the Special Handling issue at all, not realizing the entire run of these new denomination printings in 1928 was on "Special" Booklet Paper, having been completed before the dates he was given.

IDENTIFICATION: With care and a bit of practice,

identification is straightforward. Many collectors use inexpensive templates to overlay a known stamp on the candidate. First, one must be sure to begin with the proper stamp. In all cases these will be flat plate press, perf 11 stamps – no rotary press issues, and nothing with perf. 10½! Plate blocks are typically shown in technical presentations because they make for the simplest introduction. The differences in shrinkage across two or three stamps is usually dramatic.

Three of the eleven stamps, the Fourth Bureau Nos. 563b, 564b and 566a "ordinaries," are identified in the same manner that Washington-Franklin sheet stamps are separated from booklet pane stamps, i.e., the booklet stamps are slightly wider and shorter than the sheet stamps for vertical format issues in this series as shown in Figure 1.

The Fourth Bureau horizontal format stamps, Nos. 567b, 568a and 569a, are identified similarly, but in the perpendicular orientation, i.e., these are slightly narrower and taller than their sheet stamp counterparts, Figure 2.

The remaining five special issue stamps, or "Back-of-the-Book" issues, Nos. C11b, E13a, QE1b, QE2b and QE3b, are all horizontal format stamps normally printed on paper with the grain running vertically, so that they are the easiest to identify – the vertical design shrinkage on "Special" Booklet Paper with a horizontal grain direction is minimal compared to paper in the normal orientation, but the horizontal differences in width is striking, Figure 3.

One elementary "low-tech" observation may help with identification. In a humid environment, stamps will shrink and curl across the grain, allowing confirmation of the

Introduction:

Editorial Commentary by Jay Bigalke

Editorial enhancements

Editorial enhancements in the 2020 U.S. Specialized catalog are prolific.

Special Feature articles are included in this catalog for two important editorial enhancements.

After long research and documented proof, the Scott U.S. Specialized catalog now lists the “special” booklet paper stamps of 1928. This includes varieties from No. 563b through QE3b, 11 stamps in all. These listings will appear only in the U.S. Specialized catalog.

The second Special Feature provides details about the new “on cover” listings for the Kansas-Nebraska overprint issues of 1929 (Scott 658-679).

So...

What's the big deal?

Scott doesn't add (many) new listings for "classic" stamps!

"Ah, Bob. You ask much of me. Without me spending days researching this question, let me just say that in fact many more listings are added each year than are deleted. Many more. In fact, I am constantly amazed how many new items are found after all these decades of collecting. **Not so much in the front-of-the-book areas, but mainly in the back-of-the-book areas.** Without divulging upcoming Scott secrets too much, let me just say that the 2020 Scott U.S. Specialized catalog will introduce not only the Special Booklet Papers, but also more than 40 new Essays, many more new Test Stamps, perhaps 40 new Postal Counterfeits and one Revenue Counterfeit, Christmas Seal listings complete from 1980 to the present, many new tagging varieties and errors, a new Carrier lettered minor, several new Local unlettered minors, new Revenues, new Proof lettered varieties, new lettered Canal Zone errors, and perhaps 40+ new Ryukyus overprint errors. Many more new U.S. Essays to come for 2021. **Relay this to your club if you would like.**" Jim Kloetzel

Here are the “NEW” 4th Bureau stamps:

... as of October 1, 2019!

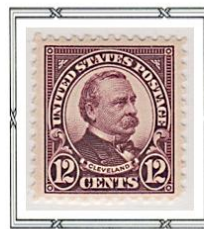
The Fourth Bureau Stamps on SBP are Relatively Scarce – Not Catalog-Listed

Printed from August 13 – September 24, 1928



Quantity Printed – 39,600,000 (13.2% of 299M total)
563b (PSAG 0576479)

July 27 – September 24, 1928



64,000,000 (14.3% of 448M total)
564b (PSE 01335651)

July 27 – October 8, 1928



84,400,000 (2.6% of 661M total)
566a (PSE 01335652)

July 27 – October 2, 1928



Quantity Printed – Not Known (1,077M total)
567b (PSAG 0576481)

July 27 – August 27, 1928



13,200,000 (12.2% of 108M total)
568a (PSE 01335653)

August 14 – September 5, 1928



42,000,000 (14.8% of 283M total)
569a (PSE 01335654)

Example: Scott #563a is a color shade; #564a and 567a are Imperf Pair Errors

And B-O-B:

The Beacon Airmail was issued July 25, 1928 The Special Delivery is the Scarcest of the 11 Stamps

Printed on SBP from October 9 to November 3, 1928

Printed on SBP only from August 7 to 13, 1928



Quantity Printed on SBP – Not Reported (107M total)

C11b (APS 222502)



Ex Cleland

Quantity Printed – 2,800,000 (4.9% of 57M total)

E13a (PSE 01335655)

Example: Scott #C11a is for a Vertical Pair, Imperf Between

And... The Stamps that Started it All!

All the 1928 Special Handling Stamps were Printed only on Special Paper

Newly Issued – June 25, 1928



Quantity Printed (100% of 1928 Printing): 26,012,750

QE1b (PSE 01335650)

Created for Rate Reduction



20,852,000

QE2b (PSAG 0576483)

"Muddy Yellow-Green" is Distinctive



15,712,800

QE3b (APS 222505)

**Examples: Scott #QE1a, QE2a, and QE3a are for Dry Prints...
Which are stamps printed on another paper variety! ***

***Look for more changes in the 2021 Edition.**

Rationale for Listing...

- These stamps are recognizably different from their sheet stamp (major listing) counterparts.
- They are akin to “Printer’s Waste” listings; they utilized remnant stocks of paper sheets purchased for producing booklet stamps on flat plate presses.
- All early booklet stamps are accorded minor listings.

They have been recognized in Durland for many years.

Why 1928? Where did this paper come from?



Lindbergh Sheet Stamp;
Issued June, 1927.

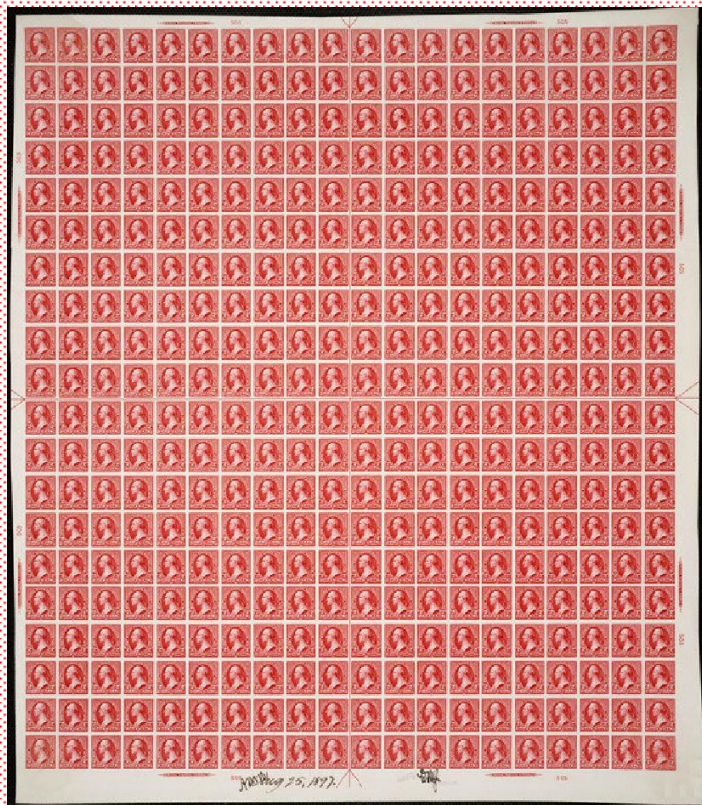
After May, 1928, Booklet stamps were printed on Rotary Presses..



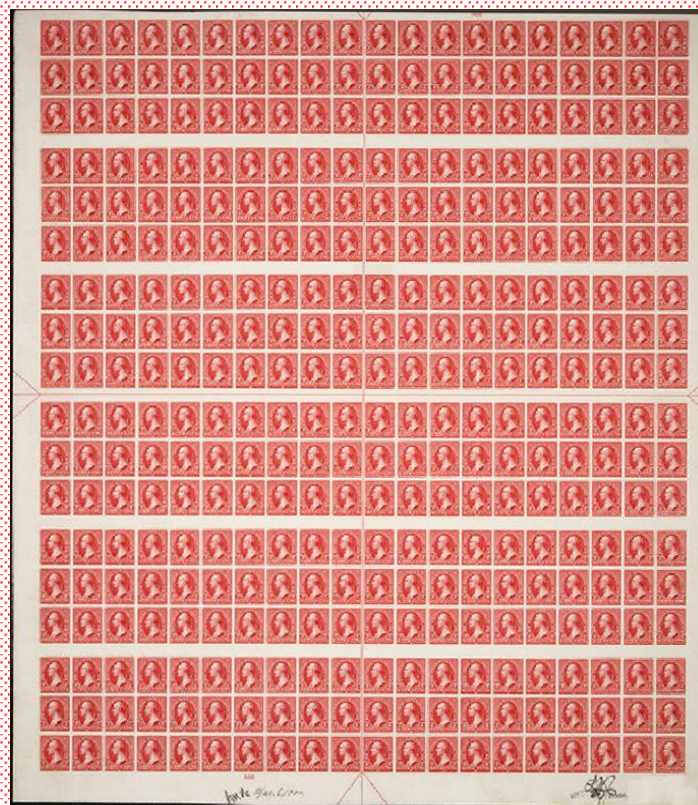
Lindbergh Booklet – C10a;
Issued May, 1928:
The LAST Booklet stamp printed
On the flat plate press!

The BEP had excess inventory
of Booklet Stamp Paper!

Booklet Paper Started with Scott #279B



On Sheet Stamp Paper.



On Booklet Paper.

April 18, 1900 – The First Booklet!

1899 – 279B

279B Subletter Varieties:

"c" rose carmine.
also bright carmine rose
also pinkish rose carmine
"d" orange red, IV, hor.
also pale orange red
also dark orange red
also deep orange red
"e" orange red, IV, vert.
"f" carmine, IV.
also reddish carmine
"g" pink, IV.
also bright pink
"h" vermilion, IV.
also pale vermilion
"i" brown orange, IV.
"j" Bklt, red, IV, hor.
also light red
also orange red
"k" Bklt, red, IV, vert.
also orange red
"l" as 279B, color missing.



On Sheet Stamp Paper.

1902 – 279Bj*



On Sheet Stamp Paper.

1902 – 279Bk*



On Booklet Paper.

* Formerly 279Be (279BjS) prior to splitting into two watermark varieties – 279Bj and 279Bk.

Identification...

- Key Concept: Shrinkage of wet-printed stamps!
- Sheet stamp paper was specified with vertical grain.
- Booklet paper was specified with horizontal grain.
- Drying paper shrinks 4 times more across the grain (than with the grain).
- Plate numbers may be used to assist identification.

Plate Number Singles (PNS) also listed in Hebert's.

Examples...



Very easily seen across three stamps as in plate blocks.

A closer look...



Requires collector knowledge and skill – be a Philatelist!

Dyslexic nightmare...



Turn horizontal format stamps for consistent measurement.

B-O-B Horizontal Format Stamps are Easy...



Wider stamps amplify the impact of shrinkage.

Tip: A Philatelic Grain Direction “Hack”
Expose Paper to Elevated Humidity:



QE4 – Known Vertical Grain



QE2a – Known Horizontal Grain

... or as my nephew calls it: “Shrinky Paper!”

Why do I call this a tribute?

NOVEMBER 2003

519

Size Differences Between Wet and Dry Printings from Flat Plates

By Wallace Cleland

USSS #6470, 1710 University Ave., Madison, WI 53726

The Bureau of Engraving and Printing in 1954 began printing stamps on "dry" paper containing 5-10% moisture. Previous "wet" printings were on paper containing 15-35% moisture, but the paper had the nasty habit of shrinking during drying, particularly across the grain of the paper. This is why booklet stamps from flat plate printings are slightly wider and shorter than sheet stamps; the grain of the paper was vertical for sheet stamps but horizontal for booklet stamps.

Most collectors know that both wet and dry printings were made of the Liberty Series stamps, which were printed on rotary presses, except for part of the 8¢ bi-colored issue. Separate plates were used in this case for the two types of printing. But many collectors do not know that four stamps were printed by both the wet and dry process from the same flat plates. These are the first three denominations of the Special Handling stamps (Scott #QE1-QE3) and the \$5 Postage Due stamp, Scott #J78. In these cases Scott gives the earlier wet printings minor numbers (QE1a-QE3a, J78b).

A puzzling example is shown in Figures 9 and 10. In this case the shrinkage of the block of 4 is 2% in the vertical direction and 0.4% horizontally. It appears that the grain of the paper was oriented horizontally in this case, rather than vertically. This is reminiscent of the "special paper" printings of 1928 described in the September, 2000 issue of *The Specialist*. The block of 4 in this case was purchased from the Bloomington, Indiana post office in the early 1940s, and thus has to be from a wet printing. Further, since there was not much use for such stamps in Bloomington, this stamp is almost certainly from the initial printing of QE1 from June 25 to July 24, 1928 (the stamp was not reprinted until

November, 1941). The use of the leftover booklet special paper in 1928 is recorded from late July to November. Bureau records do not indicate use of this paper to print Special Handling stamps, but it is possible that some was used in this fashion. Either that, or the normal paper was turned sideways for the

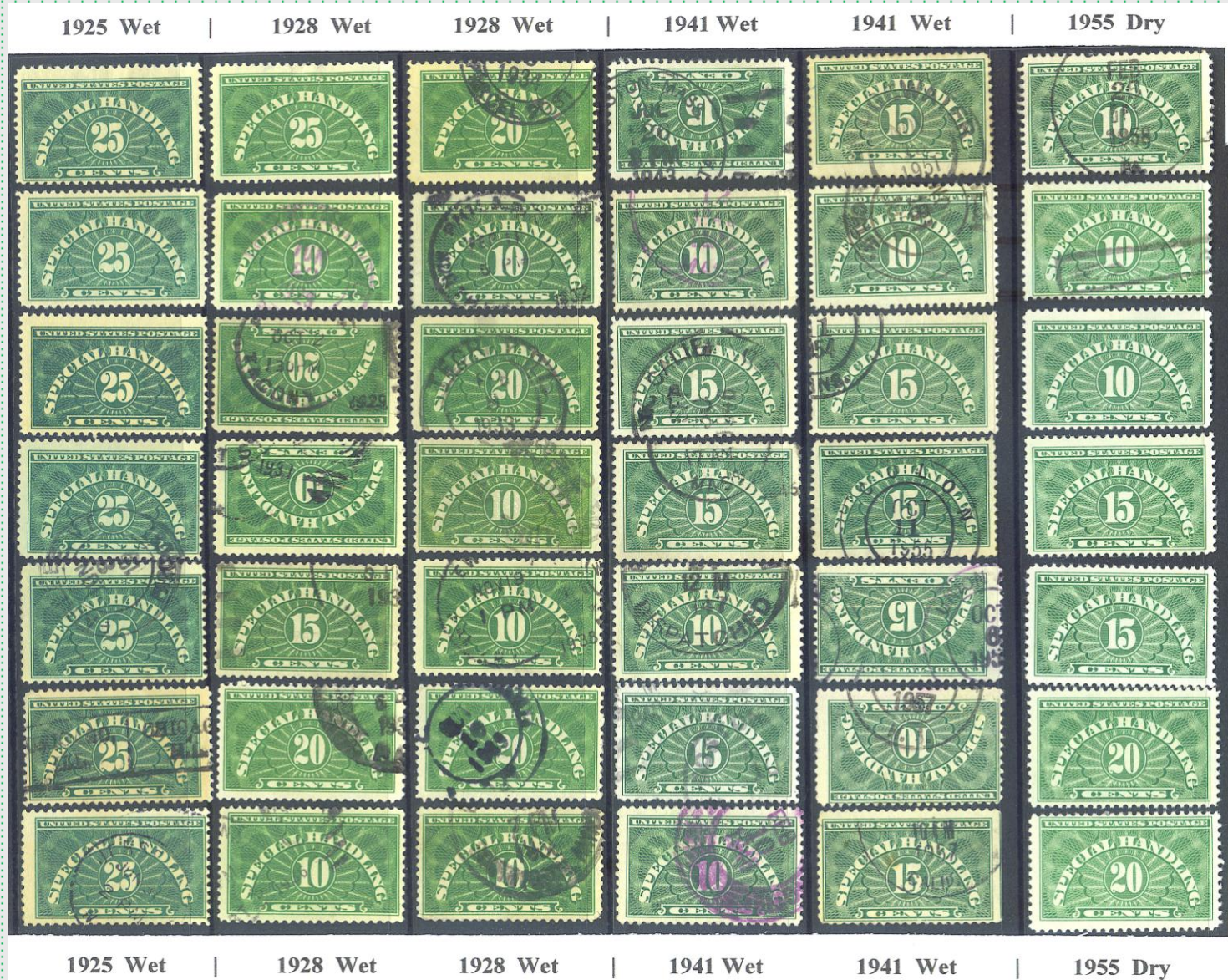
NOVEMBER 2003

525

printing. Readers should check their wet printed Special Handling stamps to see which direction the grain of the paper runs and notify the author.

A literature search turned up this author

Back in 2005, I knew “something was different.”



Met Wallace Cleland in 2006, and ...



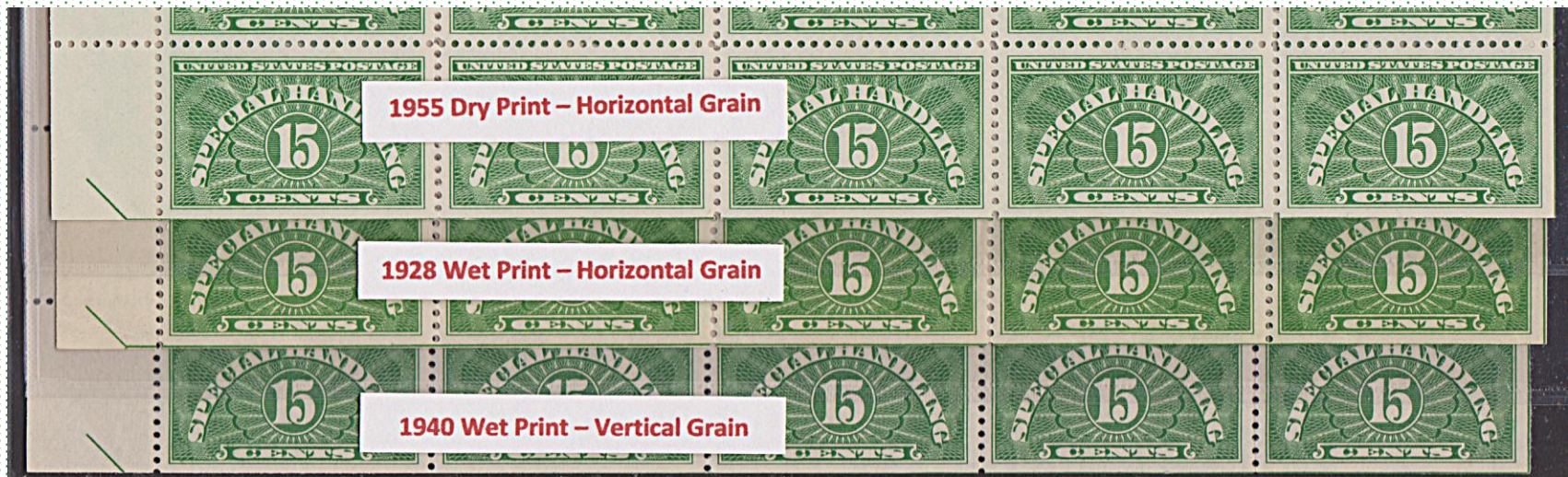
U.S. Stamp Society Dinner held in the BEP

Took his APS Summer Seminar Course.



“U.S. Coils” with Ken Lawrence (center)

**We talked... How about a “close-up” look...
I think they’re ALL on “Special” Paper!**



Wallace said, “O.K. Now prove it!” So I did.

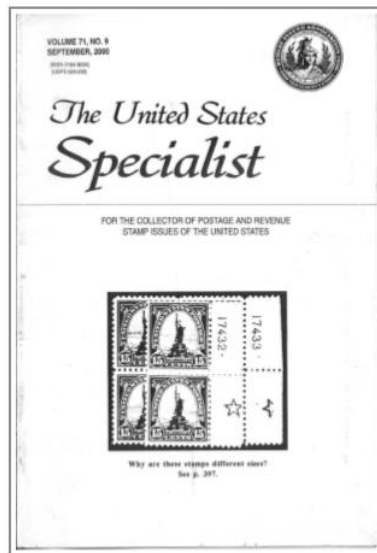
Starting from his research...



The United States Specialist

Volume: 71 Number: 9 Year: 2000 Specialist: 847

Article: The "Special" Paper Printings of 1928
Author(s): Wallace Cleland



AUGUST 2003

373

E13 Special Delivery on "Special Paper"

By Wallace Cleland

USSS #6470, 1710 University Ave., Madison, WI 53726

In the September, 2000 issue, we discussed the 1928 flat plate printings of definitives on "special paper" that was left over from booklet pane production once rotary presses were used to print booklet panes. This paper had the grain running sideways, rather than vertically, as was the case for the regular paper used for flat plate printings. Since the paper shrunk more across the grain than with it after the wet printing process, booklet stamps and stamps printed on the special paper are wider and shorter than stamps printed on the regular paper.

The special paper was used for printing of 11¢, 12¢, 15¢, 20¢, 25¢, and 30¢ regular stamps, and also for the 5¢ airmail and 15¢ Special Delivery. The latter is the scarcest of the printings, with 14,000 sheets requisitioned for this printing from August 7 to 13, 1928. The plates used were 16833-6, and we estimate that 6 or 7% of the output from these plates could be on special paper. Examples have proven very elusive, however, and only plate 16836 has been seen.

As a result we were pleased to find the single shown in Figure 1. As can be seen by the comparison with the plate single of 16857, a plate not printed on special paper, the special paper stamp is wider and shorter. While this variety does not at present have catalog listing, plate blocks on special paper will be listed and priced in the next edition of the *Durland*. Collectors should keep their eyes open for examples, especially on the 15¢ Special Delivery stamp, which is so elusive. The best way to identify this variety is to carry an example on regular paper when going to shows or stamp stores and compare it to any E13s that are available in the manner shown in Figure 1.



Figure 1. Comparison of Special Delivery stamp on "special paper" with plate singles on regular paper.

DECEMBER 2003

571

E13 Plate Block on "Special Paper"

By Wallace Cleland

USSS #6470, 1710 University Ave., Madison, WI 53726

In the September, 2000 issue we discussed the 1928 flat plate printings on "special paper" left over from booklet production after production of booklet panes was switched to the rotary presses. The grain of the special paper was horizontal, rather than vertical, and since the paper, which was wetted during the printing process, shrunk more across the grain than with it, stamps on special paper are wider and shorter than ones on normal paper.

The scarcest of the printings on special paper is of the 15¢ Special Delivery stamp (Scott E13), and we reported in the August issue this year a single we discovered this summer. Now Bob Markovits has sent us a photocopy of a plate block of E13 on the special paper and this is shown in Figure 1 in comparison with a plate block from the same plate on normal paper. The difference in width is obvious.

This is only the second plate number example reported on special paper for E13. Plate number 16836 was the only one previously known and it was reported by Southgate in 1939 in the *American Philatelic Congress Book* (pp. 27-32). So now we have plate 16833. Who will be the first to find the other two plates, 16834 and 16835?

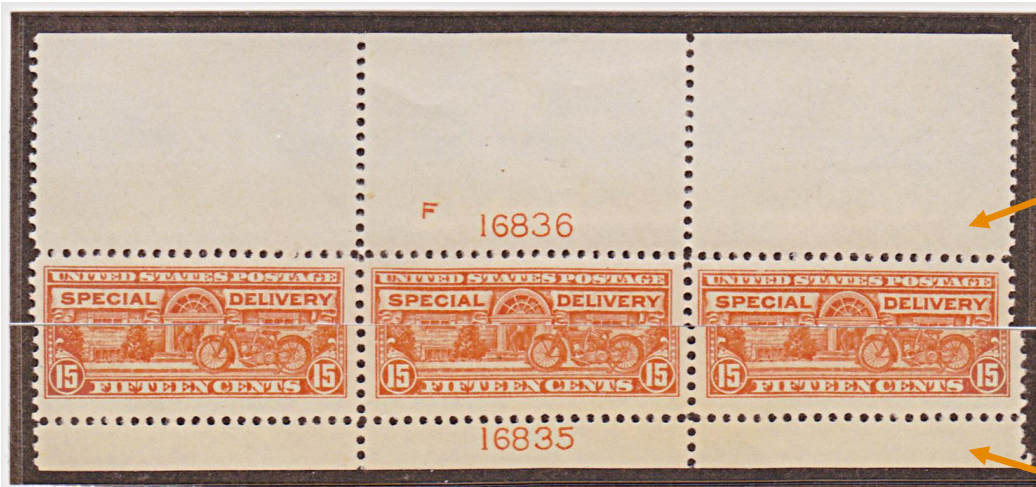


Figure 1. Comparison of plate block of 6 on "special paper" and a plate block of 4 on normal paper, both of plate 16833.

Actually goes back to Hugh Southgate's discovery in 1940.

Here's the example in the frame:

The special paper was used for printing of 11¢, 12¢, 15¢, 20¢, 25¢, and 30¢ regular stamps, and also for the 5¢ airmail and 15¢ Special Delivery. The latter is the scarcest of the printings, with 14,000 sheets requisitioned for this printing from August 7 to 13, 1928. The plates used were 16833-6, and we estimate that 6 or 7% of the output from these plates could be on special paper. Examples have proven very elusive, however, and only plate 16836 has been seen.



E13

E13a

Ex Markovits

The scarcest of the printings on special paper is of the 15¢ Special Delivery stamp (Scott E13), and we reported in the August issue this year a single we discovered this summer. Now Bob Markovits has sent us a photocopy of a plate block of E13 on the special paper and this is shown in Figure 1 in comparison with a plate block from the same plate on normal paper. The difference in width is obvious.

This is only the second plate number example reported on special paper for E13. Plate number 16836 was the only one previously known and it was reported by Southgate in 1939 in the *American Philatelic Congress Book* (pp. 27-32). So now we have plate 16833. Who will be the first to find the other two plates, 16834 and 16835?

Where is it???

What's the easiest way to identify SBP?

Cut a template:

(This is a computer graphic image – cropped)
For shows, I take Regular Paper stamp templates.

**Special Paper
Clelend Control.**



Ex Cleland

What's next?

Compare to the "Patient":



What's next?

Superimpose the template on top of the "patient":



This candidate is on Regular Paper.

And another new discovery:



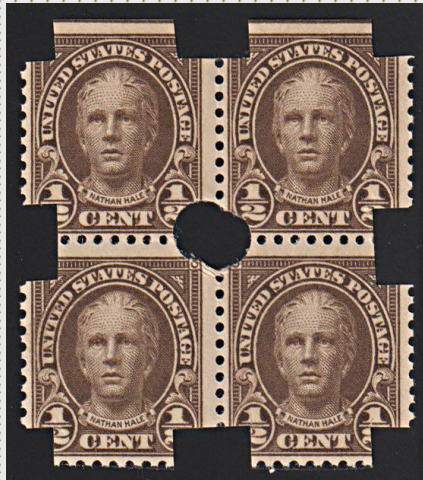
E13a
With (Cert.)

E13

Different? Or The Same?

Here are template examples I use at shows...

Superimpose the template on top of the “patient”:



Shorter

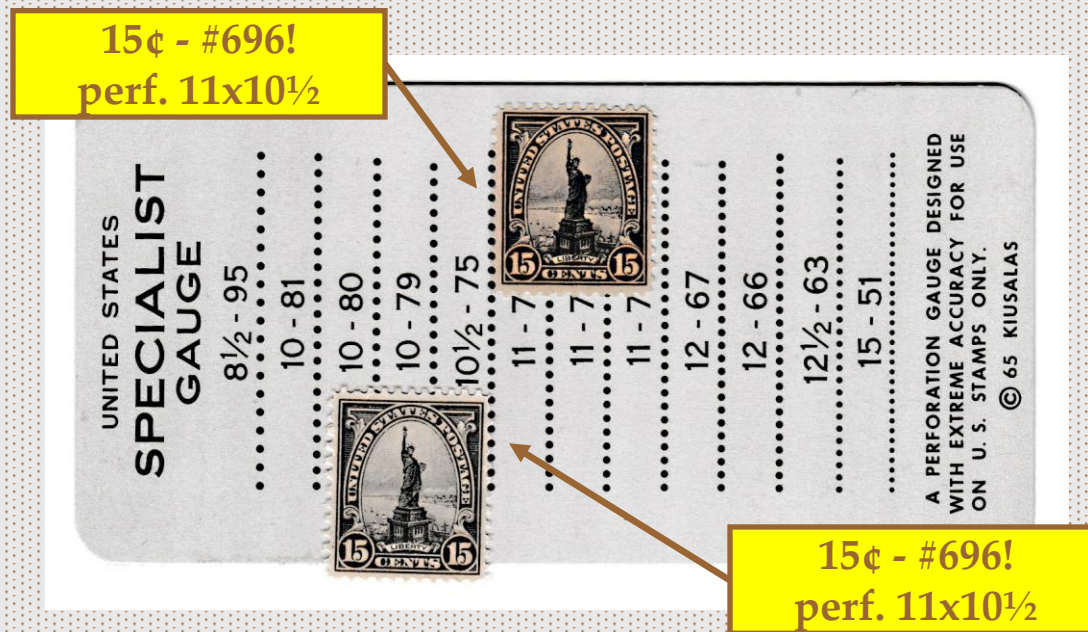
Wider

11¢ - 563b!

This “patient” is on Special Booklet Paper.

Caveats & Precautions!

Just bought these at BALPEX as #566 from “trusted” dealers:



“Bush League” Mistake!! All SBP stamps are perf. 11.
These two are NOT even #566 type stamps – both are Scott #696!

Shop Online...

The candidate from eBay is perf. 11;
Use computer graphic techniques to measure on the PC:



15¢ - 566
"Patient"



30¢ Regular Paper
Template

https://www.ebay.com/itm/KAPPYSstamps-17450-SCOTT-566-MINT-HINGED/383185252086?_trkparms=aid%3D1110001%26algo%3DSPLICE.SIM%26ao%3D2%26asc%3D20160323102634%26meid%3Dc9408f042583441f90cbdc7e06922b24%26pid%3D100623%26rk%3D3%26rkt%3D6%26sd%3D233356459043%26itm%3D383185252086%26pmt%3D0%26noa%3D1%26pg%3D2047675&_trksid=p2047675.c100623.m-1

Scott #566 is the most Challenging:



Statue of Liberty design frame is different from all the others.

Used Stamps can be easy to ID:

Use a simple atomizer with water;
The stamp will “curl” along the grain direction.



30¢ 569a Booklet Paper
“Patient 1”

30¢ 569a Booklet Paper
“Patient #2”

Horizontal Grain Direction
(Stamp is turned in the vertical format)

Here are the 4th Bureaus in the new *Specialized*...

72

POSTAGE

It is known that a full pane of No. 554 exists (or existed) with a spliced vertical tear, leaving three vertical columns of imperforate stamps at right. The editors would like to know if this pane, or parts of this pane, are still in existence and in collector or dealer hands.
Earliest documented uses: Feb. 10, 1923 (No. 554c single); Nov. 23, 1923 (No. 554d).

555 A158 3c violet, Feb. 12, 1923
deep violet 13.00 1.20
dark violet 15.00 1.20
red violet 13.00 1.20
bright violet 13.00 1.20
Never hinged
On cover with 2c (single UPU rate) 27.50 7.50
Block of 4 55.00 9.00
Pa block of 6 240.00 3.00
Never hinged 400.00 5.00

556 A159 4c yellow brown, Jan. 15, 1923
brown 16.00 50
Never hinged 35.00 50
On cover 70.00 9.00
Block of 4 250.00 3.00
Pa block of 6 400.00 5.00
Never hinged 16.00 50
Double transfer 35.00 50

a. Vert. pair, imperf. horiz.
b. Perf. 10 at top or bottom 3,500 22,500
No. 556a is unique. It resulted from a sheet that was damaged and patched during production.
No. 556b used also exists as a transitional stamp gauging 10 at left top and 11 at right top. Value the same.

557 A160 5c dark blue, Oct. 27, 1922
deep blue 16.00 30
Never hinged 35.00 30
On UPU-rate cover 70.00 6.00
Block of 4 250.00 3.00
Pa block of 6 375.00 5.00
Never hinged 2,000 350.00
Double transfer (15571 UL 86) 20,000 3.00

a. Horiz. pair, imperf. vert.
b. Horiz. pair, imperf. vert.
c. Perf. 10 at top or bottom 9,500 17,500
Earliest documented uses: Feb. 12, 1923 (No. 557c).

558 A161 6c red orange, Nov. 2, 1922
pale red orange 30.00 1.00
Never hinged 65.00 1.00
Pair on special delivery cover 17.00 7.50
Block of 4 400.00 7.50
Pa block of 6 600.00 10.00
Never hinged 55.00 2.00
Double transfer (Plate 14169 LR 60 and 70) 55.00 2.00

559 A162 7c black, May 1, 1923
gray black 7.25 7.5
Never hinged 15.50 2.00
On registered cover with other values 27.50 6.00
Block of 4 120.00 6.00
Pa block of 6 170.00 10.00
Never hinged 37.50 1.00
Double transfer 37.50 1.00

560 A163 8c green, May 1, 1923
pale olive green 37.50 1.00
Never hinged 80.00 1.00
Pair on airmail cover 12.50 1.00
Block of 4 160.00 7.50
Pa block of 6 575.00 10.00
Never hinged 55.00 2.00

561 A164 9c rose, Jan. 15, 1923
pale rose 11.00 1.25
Never hinged 25.00 1.25
On registered cover with other values 47.50 9.00
Block of 4 250.00 9.00
Pa block of 6 375.00 10.00
Never hinged 13.50 35
Double transfer 13.50 35

562 A165 10c orange, Jan. 15, 1923
pale orange 13.50 35
Never hinged 30.00 6.00
On special delivery cover with 2c 60.00 2.00
Block of 4 275.00 10.00
Pa block of 6 400.00 10.00
Never hinged 2,000 3.250
Vert. pair, imperf. horiz. 5,750 6,250
Imperf. pair 24,000 50,000
Perf. 10 at top or bottom 60,000 15,000

No. 562a is valued in the grade of fine, with gum and without blue pencil defining lines. No. 562b is valued without gum and without blue pencil defining lines. No. 562c is valued in the grade of fine.

563 A166 11c greenish blue, Oct. 4, 1922
greenish blue 1.25 .60
Never hinged 2.75 1.60
light blue 1.60 .60
Never hinged 1.25 1.25
On registered cover with other values 6.25 12.50
Block of 4 55.00 3.50
Pa block of 6 70.00 5.00
Never hinged 1.25 .60
light yellow green 1.25 .60
Never hinged 2.75 1.25
On registered cover with other values 14.00 4.00
Block of 4 40.00 4.00
Pa block of 6 40.00 4.00

a. 11c light bluish green
Never hinged 1.25 .60
On registered cover with other values 14.00 4.00
Block of 4 40.00 4.00
Pa block of 6 40.00 4.00

b. 11c light bluish green, printed on "special" booklet paper, 1928 (see note before #551)
Never hinged 1.75 .90
On registered cover with other values 25.00 25.00
Block of 4 45.00 4.00
Pa block of 6 90.00 120.00
Never hinged 20,000.
d. Imperf. pair

564 A167 12c brown violet, Mar. 20, 1923
deep brown violet 4.75 .35
Never hinged 4.75 .35
On special delivery cover 12.50 3.00
Block of 4 115.00 3.00
Pa block of 6 160.00 5.00
Pa block of 6 & large 5 point star, side only 150.00 225.00
Never hinged 250.00 400.00
Double transfer, (14404 UL 73 & 74) 11.00 3,750.

a. Printed on "special" booklet paper, 1928 (see note before #551)
Never hinged 10.00 1.00
On special delivery cover 25.00 25.00
Block of 4 45.00 4.00
Pa block of 6 300.00 5.00
Never hinged 4.25 .90
565 A168 14c blue, May 1, 1923
blue 4.25 .90
Never hinged 9.50 1.50
On registered cover with other values 18.00 7.50
Block of 4 80.00 120.00
Pa block of 6 120.00 150.00
Double transfer

Horizontal pairs of No. 565 are known with spacings up to 3mm instead of 2mm between. These are from the 5th and 6th vertical rows of the right panes of Plate 14515 and also between stamps Nos. 3 and 4 of the same pane. A plate block of PL 14512 is known with 3mm spacing.

566 A169 15c gray, Nov. 11, 1922
light gray 16.00 30
Never hinged 16.00 30
On registered cover with 2c 35.00 3.50
Block of 4 70.00 2.00
Pa block of 6 275.00 4.00
Never hinged 400.00 5.00
Pa block of 6 & large 5 point star, side only 550.00 825.00
Never hinged 825.00 12.00

a. Printed on "special" booklet paper, 1928 (see note before #551)
Never hinged 30.00 2.00
On cover 130.00 130.00
Pa block of 6 450.00 650.00
Never hinged 16.00 30
567 A170 20c carmine rose, May 1, 1923
deep carmine rose 16.00 30
On hinged 35.00 12.50
On registered UPU-rate cover 70.00 2.00
Block of 4 275.00 4.00
Pa block of 6 400.00 5.00
Never hinged 575.00 75.00
Pa block of 6 & large 5 point star, side only 850.00 2,500
Never hinged 5,000 7,000

b. Printed on "special" booklet paper, 1928 (see note before #551)
On registered UPU-rate cover 35.00 3.00
Block of 4 70.00 20.00
Pa block of 6 150.00 500.00
Pa block of 6 900.00 900.00
Never hinged

No. 567a is valued in the grade of fine.

"Bridge over Falls" plate scratches

568 A171 25c yellow green, Nov. 11, 1922
green 13.50 .75
deep green 13.50 .75
Never hinged 30.00 27.50
On contrast airmail cover 60.00 6.00
Block of 4 300.00 425.00
Pa block of 6 425.00 425.00
Never hinged 475.00 675.00
Double transfer (17445 UL 26) 475.00 675.00
Plate scratches ("Bridge over Falls") 475.00 675.00

a. Printed on "special" booklet paper, 1928 (see note before #551)
Never hinged 35.00 2.25
On contrast airmail cover 75.00 35.00

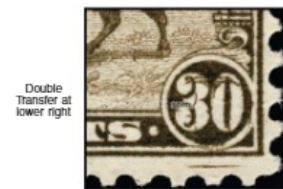
569 A172 30c olive brown, Mar. 20, 1923
olive brown 22.50 .60
Never hinged 50.00 20.00
On registered cover with other values 100.00 100.00
Block of 4 475.00 475.00
Pa block of 6 475.00 475.00
Double transfer at left (14038 LR 79) 450.00 450.00
Double transfer at right (14038 LR 79) 450.00 450.00
Printed on "special" booklet paper, 1928 (see note before #551) 45.00 3.50
Never hinged 200.00 35.00
On registered cover with other values 200.00 35.00
Pa block of 6 900.00 900.00
570 A173 35c lilac, Nov. 11, 1922
dull lilac 32.50 .40
Never hinged 70.00 27.50
On Federal airmail cover 140.00 2.00
Block of 4 550.00 750.00
Pa block of 6 750.00 85.00
Never hinged 35.00 .80
571 A174 41c violet brown, Feb. 12, 1923
violet black 75.00 1.00
Never hinged 42.50 1.00
On post-1932 registered cover with other values 85.00 7.50
Block of 4 150.00 4.50
Margin block of 4, arrow, top or bottom 300.00 300.00
Pa block of 6 525.00 90.00 2.00
Double transfers, PL 18642 L 30 and 18642 L 31 90.00 2.00
572 A175 47c deep blue, Mar. 20, 1923
deep blue 120.00 15.00
Never hinged 300.00 55.00
On post-1932 registered cover with other values 350.00 65.00
Block of 4 240.00 60.00
Margin block of 4, arrow, top or bottom 700.00 1,000.00
Pa block of 6 1,000.00 1,000.00
573 A176 55c carmine & blue, Mar. 20, 1923
carmine & blue 90.00 15.00
Never hinged 180.00 180.00
On post-1932 registered cover with other values 380.00 175.00
Block of 4 400.00 400.00
Center line block 460.00 105.00
Never hinged 625.00 1,650.00
Pa block of 6, two Pa & arrow 2,600.00 1,750.00 30.00
a. 55c carmine lake & dark blue 350.00 350.00
On post-1932 registered cover with other values 190.00 800.00 175.00
Block of 4 825.00 900.00 225.00
Center line block 1,400.00 2,500.00
Pa block of 6, two Pa & arrow 3,750.00 450.00 36.35
Nos. 551-573 (23) 940.60
Nos. 551-573, never hinged 940.60

For other listings of perforated stamps of designs A154 to A173 see:
Nos. 578 & 579, Perf. 11x10
Nos. 581-591, Perf. 10
Nos. 594-596, Perf. 11
Nos. 632-642, 653, 662-696, Perf. 11x10
Nos. 697-701, Perf. 10x11
This series also includes #622-623 (perf. 11), 684-687 & 720-723.

568 A171 25c yellow green, Nov. 11, 1922
green 13.50 .75
deep green 13.50 .75
Never hinged 30.00 27.50
On contrast airmail cover 60.00 6.00
Block of 4 300.00 425.00
Pa block of 6 425.00 425.00
Never hinged 475.00 675.00
Double transfer (17445 UL 26) 475.00 675.00
Plate scratches ("Bridge over Falls") 475.00 675.00

a. Printed on "special" booklet paper, 1928 (see note before #551)
Never hinged 35.00 2.25
On contrast airmail cover 75.00 35.00

Pa block of 6 475.00
Never hinged 675.00
Vert. pair, imperf. horiz. 3,250.
c. Perf. 10 at top or bottom 5,000 11,000.
Never hinged 7,500.
No. 568a is valued in the grade of fine. No. 568b is used in the grade of fine.



Double transfer at lower right

569 A172 30c olive brown, Mar. 20, 1923
olive brown 22.50 .60
Never hinged 50.00 20.00
On registered cover with other values 100.00 100.00
Block of 4 475.00 475.00
Pa block of 6 475.00 475.00
Double transfer at left (14038 LR 79) 450.00 450.00
Double transfer at right (14038 LR 79) 450.00 450.00
Printed on "special" booklet paper, 1928 (see note before #551) 45.00 3.50
Never hinged 200.00 35.00
On registered cover with other values 200.00 35.00
Pa block of 6 900.00 900.00
570 A173 35c lilac, Nov. 11, 1922
dull lilac 32.50 .40
Never hinged 70.00 27.50
On Federal airmail cover 140.00 2.00
Block of 4 550.00 750.00
Pa block of 6 750.00 85.00
Never hinged 35.00 .80
571 A174 41c violet brown, Feb. 12, 1923
violet black 75.00 1.00
Never hinged 42.50 1.00
On post-1932 registered cover with other values 85.00 7.50
Block of 4 150.00 4.50
Margin block of 4, arrow, top or bottom 300.00 300.00
Pa block of 6 525.00 90.00 2.00
Double transfers, PL 18642 L 30 and 18642 L 31 90.00 2.00
572 A175 47c deep blue, Mar. 20, 1923
deep blue 120.00 15.00
Never hinged 300.00 55.00
On post-1932 registered cover with other values 350.00 65.00
Block of 4 240.00 60.00
Margin block of 4, arrow, top or bottom 700.00 1,000.00
Pa block of 6 1,000.00 1,000.00
573 A176 55c carmine & blue, Mar. 20, 1923
carmine & blue 90.00 15.00
Never hinged 180.00 180.00
On post-1932 registered cover with other values 380.00 175.00
Block of 4 400.00 400.00
Center line block 460.00 105.00
Never hinged 625.00 1,650.00
Pa block of 6, two Pa & arrow 2,600.00 1,750.00 30.00
a. 55c carmine lake & dark blue 350.00 350.00
On post-1932 registered cover with other values 190.00 800.00 175.00
Block of 4 825.00 900.00 225.00
Center line block 1,400.00 2,500.00
Pa block of 6, two Pa & arrow 3,750.00 450.00 36.35
Nos. 551-573 (23) 940.60
Nos. 551-573, never hinged 940.60

For other listings of perforated stamps of designs A154 to A173 see:
Nos. 578 & 579, Perf. 11x10
Nos. 581-591, Perf. 10
Nos. 594-596, Perf. 11
Nos. 632-642, 653, 662-696, Perf. 11x10
Nos. 697-701, Perf. 10x11
This series also includes #622-623 (perf. 11), 684-687 & 720-723.

568 A171 25c yellow green, Nov. 11, 1922
green 13.50 .75
deep green 13.50 .75
Never hinged 30.00 27.50
On contrast airmail cover 60.00 6.00
Block of 4 300.00 425.00
Pa block of 6 425.00 425.00
Never hinged 475.00 675.00
Double transfer (17445 UL 26) 475.00 675.00
Plate scratches ("Bridge over Falls") 475.00 675.00

a. Printed on "special" booklet paper, 1928 (see note before #551)
Never hinged 35.00 2.25
On contrast airmail cover 75.00 35.00

569 A172 30c olive brown, Mar. 20, 1923
olive brown 22.50 .60
Never hinged 50.00 20.00
On registered cover with other values 100.00 100.00
Block of 4 475.00 475.00
Pa block of 6 475.00 475.00
Double transfer at left (14038 LR 79) 450.00 450.00
Double transfer at right (14038 LR 79) 450.00 450.00
Printed on "special" booklet paper, 1928 (see note before #551) 45.00 3.50
Never hinged 200.00 35.00
On registered cover with other values 200.00 35.00
Pa block of 6 900.00 900.00
570 A173 35c lilac, Nov. 11, 1922
dull lilac 32.50 .40
Never hinged 70.00 27.50
On Federal airmail cover 140.00 2.00
Block of 4 550.00 750.00
Pa block of 6 750.00 85.00
Never hinged 35.00 .80
571 A174 41c violet brown, Feb. 12, 1923
violet black 75.00 1.00
Never hinged 42.50 1.00
On post-1932 registered cover with other values 85.00 7.50
Block of 4 150.00 4.50
Margin block of 4, arrow, top or bottom 300.00 300.00
Pa block of 6 525.00 90.00 2.00
Double transfers, PL 18642 L 30 and 18642 L 31 90.00 2.00
572 A175 47c deep blue, Mar. 20, 1923
deep blue 120.00 15.00
Never hinged 300.00 55.00
On post-1932 registered cover with other values 350.00 65.00
Block of 4 240.00 60.00
Margin block of 4, arrow, top or bottom 700.00 1,000.00
Pa block of 6 1,000.00 1,000.00
573 A176 55c carmine & blue, Mar. 20, 1923
carmine & blue 90.00 15.00
Never hinged 180.00 180.00
On post-1932 registered cover with other values 380.00 175.00
Block of 4 400.00 400.00
Center line block 460.00 105.00
Never hinged 625.00 1,650.00
Pa block of 6, two Pa & arrow 2,600.00 1,750.00 30.00
a. 55c carmine lake & dark blue 350.00 350.00
On post-1932 registered cover with other values 190.00 800.00 175.00
Block of 4 825.00 900.00 225.00
Center line block 1,400.00 2,500.00
Pa block of 6, two Pa & arrow 3,750.00 450.00 36.35
Nos. 551-573 (23) 940.60
Nos. 551-573, never hinged 940.60

For other listings of perforated stamps of designs A154 to A173 see:
Nos. 578 & 579, Perf. 11x10
Nos. 581-591, Perf. 10
Nos. 594-596, Perf. 11
Nos. 632-642, 653, 662-696, Perf. 11x10
Nos. 697-701, Perf. 10x11
This series also includes #622-623 (perf. 11), 684-687 & 720-723.

568 A171 25c yellow green, Nov. 11, 1922
green 13.50 .75
deep green 13.50 .75
Never hinged 30.00 27.50
On contrast airmail cover 60.00 6.00
Block of 4 300.00 425.00
Pa block of 6 425.00 425.00
Never hinged 475.00 675.00
Double transfer (17445 UL 26) 475.00 675.00
Plate scratches ("Bridge over Falls") 475.00 675.00

a. Printed on "special" booklet paper, 1928 (see note before #551)
Never hinged 35.00 2.25
On contrast airmail cover 75.00 35.00

569 A172 30c olive brown, Mar. 20, 1923
olive brown 22.50 .60
Never hinged 50.00 20.00
On registered cover with other values 100.00 100.00
Block of 4 475.00 475.00
Pa block of 6 475.00 475.00
Double transfer at left (14038 LR 79) 450.00 450.00
Double transfer at right (14038 LR 79) 450.00 450.00
Printed on "special" booklet paper, 1928 (see note before #551) 45.00 3.50
Never hinged 200.00 35.00
On registered cover with other values 200.00 35.00
Pa block of 6 900.00 900.00
570 A173 35c lilac, Nov. 11, 1922
dull lilac 32.50 .40
Never hinged 70.00 27.50
On Federal airmail cover 140.00 2.00
Block of 4 550.00 750.00
Pa block of 6 750.00 85.00
Never hinged 35.00 .80
571 A174 41c violet brown, Feb. 12, 1923
violet black 75.00 1.00
Never hinged 42.50 1.00
On post-1932 registered cover with other values 85.00 7.50
Block of 4 150.00 4.50
Margin block of 4, arrow, top or bottom 300.00 300.00
Pa block of 6 525.00 90.00 2.00
Double transfers, PL 18642 L 30 and 18642 L 31 90.00 2.00
572 A175 47c deep blue, Mar. 20, 1923
deep blue 120.00 15.00
Never hinged 300.00 55.00
On post-1932 registered cover with other values 350.00 65.00
Block of 4 240.00 60.00
Margin block of 4, arrow, top or bottom 700.00 1,000.00
Pa block of 6 1,000.00 1,000.00
573 A176 55c carmine & blue, Mar. 20, 1923
carmine & blue 90.00 15.00
Never hinged 180.00 180.00
On post-1932 registered cover with other values 380.00 175.00
Block of 4 400.00 400.00
Center line block 460.00 105.00
Never hinged 625.00 1,650.00
Pa block of 6, two Pa & arrow 2,600.00 1,750.00 30.00
a. 55c carmine lake & dark blue 350.00 350.00
On post-1932 registered cover with other values 190.00 800.00 175.00
Block of 4 825.00 900.00 225.00
Center line block 1,400.00 2,500.00
Pa block of 6, two Pa & arrow 3,750.00 450.00 36.35
Nos. 551-573 (23) 940.60
Nos. 551-573, never hinged 940.60

For other listings of perforated stamps of designs A154 to A173 see:
Nos. 578 & 579, Perf. 11x10
Nos. 581-591, Perf. 10
Nos. 594-596, Perf. 11
Nos. 632-642, 653, 662-696, Perf. 11x10
Nos. 697-701, Perf. 10x11
This series also includes #622-623 (perf. 11), 684-687 & 720-723.

569a

C11b in the new *Specialized...*



Beacon on
Rocky
Mountains
AP7

Issued to meet the new rate, effective August 1, of 5 cents per ounce.

Plates of 100 subjects in two panes of 50

1928, July 25	Unwmk.	Perf. 11
C11 AP7 5c carmine and blue	5.50	.85
Never hinged	10.00	
On cover, first day of 5c airmail rate, Aug. 1		3.00
Margin block of 4, arrow, (line) right or left	25.00	4.50
P# block of 6, two P# & red "TOP"	42.50	—
Never hinged	57.50	
P# block of 6, two P# & blue "TOP"	42.50	—
Never hinged	57.50	
P# block of 6, two P# & double "TOP"	110.00	—
Never hinged	160.00	
P# block of 6, two P# only (no "TOP")	200.00	—
Never hinged	300.00	
Recut frame line at left	8.00	1.50
Double transfer	—	—
a. Vert. pair, imperf. between	7,000.	
b. Printed on "special" booklet paper, 1928 (see note before #551)	9.00	2.00
Never hinged	17.50	
On cover		6.00
Block of 4	40.00	
P# block of 6, 2 P#	100.00	
Never hinged	150.00	

No. C11a is unique. It is torn and valued thus.

C11b

E13b in the new *Specialized*...

E13a

Table of Contents 2020 Scott Specialized eCatalogue of United States Stamps and Covers pages: 431 / 1316

Scott catalogue
Values for Kansas-Nebraska covers debut in 2020 Scott U.S. Specialized catalogue
2020 Scott Stamp Values U.S. Specialized by Grade

Special Delivery

Air Post Semi-Official Stamps
Columbia (SCADTA) Consular Overprints
R.F. Overprints
Special Delivery
U.S. Registry Exchange Labels (1883-1911)
Registration Stamps
Certified Mail Stamp
Postage Due Stamps
U.S. Postal Agency in China
Official Stamps
Newspaper and Periodical Stamps
Postal Note Stamps
Parcel Post Stamps
Parcel Post Postage Due Stamps
Special Handling Stamps

Special Delivery
20c
U.S. POSTAGE
SPECIAL DELIVERY
20c

Post Office Truck — SD7

1925
Unwmk. Perf. 11
Issued to facilitate special delivery service for parcel post.

E13 SD6 15c deep orange, Apr. 11, 1925 40.00 3.75
Never hinged 75.00
On cover 55.00
First day cover 400.00
P# block of 6 450.00
Never hinged 700.00
Double transfer 47.50 4.00
a. Printed on "special" booklet paper, 1928 (see note before #551)
Never hinged 85.00 10.00
On cover 160.00
Block of 4 350.00 100.00
P# block of 6
Never hinged
E14 SD7 20c black, Apr. 25, 1925 2.00 1.00
Never hinged 4.00 25.00
On cover 175.00
First day cover 50.00
P# block of 6 70.00

Motorcycle Type of 1922
ROTARY PRESS PRINTING
1927-31 Unwmk. Perf. 11x10 1/2

E16 SD6 15c orange, Aug. 1931 .60 .25
Never hinged .90
On cover 1.50
First day cover, Washington, D.C., Aug. 13, 1931 125.00
P# block of 4 2.50
Never hinged 4.00

The Washington, D.C. Aug. 13, 1931 first day cover reflects the first day of sale at the philatelic agency. The actual earliest documented use of No. E16 is Aug. 6, 1931, at Easton, PA; value, \$2,000.

Catalogue values for unused stamps in this section, from this point to the end, are for Never Hinged items.

ROTARY PRESS PRINTING
E. E. Plates of 200 subjects in four panes of 50 each.

1944-51 Unwmk. Perf. 11x10 1/2
E17 SD6 13c blue, Oct. 30, 1944 .60 .25
First day cover 15.00
P# block of 4 2.75
E18 SD6 17c orange yellow, Oct. 30, 1944 3.50 2.50
On commercial cover 65.00
First day cover 20.00
P# block of 4 45.00
First day cover, Nos. E17 & E18 20.00
P# block of 4 1.20 .25
E19 SD7 20c black, Nov. 30, 1951 5.00
First day cover 5.00
P# block of 4

1957, Sept. 3
E21 SD8 30c lake
First day cover, Indianapolis, Ind.
P# block of 4

SPECIAL DELIVERY
45c
Designed by Norman Ives.
GIORI PRESS PRINTING
Plates of 200 subjects in four panes of 50 each.

1969, Nov. 21 Unwmk.
E22 SD9 45c carmine & violet blue
First day cover, New York, N.Y.
P# block of 4
Margin block of 4, Mr. Zip and "U Code"

1971, May 10
E23 SD9 60c violet blue & carmine
First day cover, Phoenix, Ariz. (1)
P# block of 4
Margin block of 4, Mr. Zip and "U Code"

From 1885 to the present, special delivery stamps have not been and are not valid postage of any description, nor for

And... Finally!!!

Special Handling Stamps are ALL Listed *

Table of Contents 2020 Scott Specialized eCatalogue of United States Stamps and Covers pages: 450 / 1316

R.F. Overprints
Special Delivery
U.S. Registry Exchange Labels (1883-1911)
Registration Stamp
Certified Mail Stamp
Postage Due Stamps
U.S. Postal Agency in China
Official Stamps
Newspaper and Periodical Stamps
Postal Note Stamps
Parcel Post Stamps
Parcel Post Postage Due Stamps
Special Handling Stamps
Postal Insurance Stamps
First Day Covers
Air Post First Day Covers
Booklets: Panes & Covers
Computer Vended Postage Stamps
Personal Computer Postage
Non-Personalizable Postage
Vending & Affixing Machine Perforations
Imperforate Flat Plates
Commemorative Stamp Quantities Issued

SPECIAL HANDLING STAMPS

The Postal Service Act, approved February 28, 1925, provided for a special handling stamp of the 25-cent denomination for use on fourth-class mail matter, which would secure for such mail matter the expeditious handling accorded to mail matter of the first class.

PP13

FLAT PLATE PRINTING
Plates of 200 subjects in four panes of 50

1925-55	Engr.	Unwmk.	Perf.	11
QE1 PP13 10c green, wet printing, 1940			2.00	1.00
Never hinged			4.25	—
Block of 4			10.00	—
P# block of 6			25.00	—
Never hinged			40.00	45.00
First day cover			11.00	—
Never hinged			25.00	—
Block of 4			75.00	—
P# block of 6			125.00	—
Never hinged			2.00	1.00
Before #551			4.25	—
Never hinged			10.00	45.00
First day cover			25.00	—
Block of 4			40.00	—
P# block of 6			40.00	—
Never hinged			2.25	.90
Block of 4			4.75	—
Never hinged			11.00	—

Earliest documented use: No. QE1a, Feb. 26, 1958 (dated cancel on off-cover stamp).

QE2 PP13 15c green, wet printing, 1940

Never hinged	2.25	.90
Block of 4	4.75	—
Never hinged	11.00	—

QE3 PP13 20c green, wet printing, 1940

Never hinged	3.75	1.50
Block of 4	7.75	—
P# block of 6	37.50	—
Never hinged	60.00	—
First day cover	45.00	—
Never hinged	350.00	—
Block of 4	7.50	150.00
Never hinged	15.00	—
Block of 4	37.50	—
P# block of 6	85.00	—
Never hinged	150.00	—
20c yellow green, printed on "special" booklet paper, 1928 (see note before #551)	3.75	1.50
Never hinged	7.75	45.00
First day cover	17.50	—
Block of 4	37.50	—
P# block of 6	60.00	—
Never hinged	—	—

Earliest documented use: No. QE2a, Aug. 1, 1957.

QE4 PP13 25c deep green, April 11, 1925

Never hinged	20.00	3.75
Block of 4	37.50	—
P# block of 6	115.00	24.00
Never hinged	350.00	—
Never hinged	525.00	—
"A" and second "T" of "States" joined at top (Pl. 17103)	80.00	50.00
Never hinged	140.00	—

QE2b

QE3b

QE1b

STATES
AT joined at top

POSTAGE
TA joined at top

STATES
Dot on second "T"

SCOTT

<https://www.scottonline.com/2020-scott-specialized-ecatalogue-of-united-states>

* Watch for changes in the 2021 edition

Remember this slide?

72

POSTAGE

It is known that a full pane of No. 554 exists (or existed) with a spliced vertical tear, leaving three vertical columns of imperforate stamps at right. The editors would like to know if this pane, or parts of this pane, are still in existence and in collector or dealer hands.

Earliest documented uses: Feb. 10, 1923 (No. 554c single); Nov. 23, 1923 (No. 554d).

555 A158	3c violet, Feb. 12, 1923	13.00	1.20
	deep violet	15.00	1.20
	dark violet	15.00	1.20
	red violet	13.00	1.20
	bright violet	13.00	1.20
	Never hinged	27.50	7.50

On cover with 2c (single UPU rate)
Block of 4
Pa block of 6
Never hinged

556 A159	4c yellow brown, Jan. 15, 1923	16.00	.50
	brown	35.00	.50

On cover
Block of 4
Pa block of 6
Never hinged

556 A159	4c yellow brown, Jan. 15, 1923	16.00	.50
	brown	35.00	.50

On cover
Block of 4
Pa block of 6
Never hinged

556 A159	4c yellow brown, Jan. 15, 1923	16.00	.50
	brown	35.00	.50

On cover
Block of 4
Pa block of 6
Never hinged

556 A159	4c yellow brown, Jan. 15, 1923	16.00	.50
	brown	35.00	.50

On cover
Block of 4
Pa block of 6
Never hinged

556 A159	4c yellow brown, Jan. 15, 1923	16.00	.50
	brown	35.00	.50

On cover
Block of 4
Pa block of 6
Never hinged

556 A159	4c yellow brown, Jan. 15, 1923	16.00	.50
	brown	35.00	.50

On cover
Block of 4
Pa block of 6
Never hinged

556 A159	4c yellow brown, Jan. 15, 1923	16.00	.50
	brown	35.00	.50

On cover
Block of 4
Pa block of 6
Never hinged

556 A159	4c yellow brown, Jan. 15, 1923	16.00	.50
	brown	35.00	.50

On cover
Block of 4
Pa block of 6
Never hinged

556 A159	4c yellow brown, Jan. 15, 1923	16.00	.50
	brown	35.00	.50

On cover
Block of 4
Pa block of 6
Never hinged

556 A159	4c yellow brown, Jan. 15, 1923	16.00	.50
	brown	35.00	.50

On cover
Block of 4
Pa block of 6
Never hinged

556 A159	4c yellow brown, Jan. 15, 1923	16.00	.50
	brown	35.00	.50

On cover
Block of 4
Pa block of 6
Never hinged

556 A159	4c yellow brown, Jan. 15, 1923	16.00	.50
	brown	35.00	.50

On cover
Block of 4
Pa block of 6
Never hinged

556 A159	4c yellow brown, Jan. 15, 1923	16.00	.50
	brown	35.00	.50

On cover
Block of 4
Pa block of 6
Never hinged

556 A159	4c yellow brown, Jan. 15, 1923	16.00	.50
	brown	35.00	.50

On cover
Block of 4
Pa block of 6
Never hinged

556 A159	4c yellow brown, Jan. 15, 1923	16.00	.50
	brown	35.00	.50

On cover
Block of 4
Pa block of 6
Never hinged

b.	11c light bluish green, printed on "special" booklet paper, 1928 (see note before #551)	1.75	.90
	Never hinged	4.00	25.00
	On registered cover with other values	45.00	
	Block of 4	90.00	
	Pa block of 6	120.00	
	Never hinged	20.000.	

d. Imperf., pair

564 A167	12c brown violet, Mar. 20, 1923	4.75	.35
	deep brown violet	4.75	.35

On special delivery cover
Block of 4
Pa block of 6

564 A167	12c brown violet, Mar. 20, 1923	4.75	.35
	deep brown violet	4.75	.35

On special delivery cover
Block of 4
Pa block of 6

564 A167	12c brown violet, Mar. 20, 1923	4.75	.35
	deep brown violet	4.75	.35

On special delivery cover
Block of 4
Pa block of 6

564 A167	12c brown violet, Mar. 20, 1923	4.75	.35
	deep brown violet	4.75	.35

On special delivery cover
Block of 4
Pa block of 6

564 A167	12c brown violet, Mar. 20, 1923	4.75	.35
	deep brown violet	4.75	.35

On special delivery cover
Block of 4
Pa block of 6

564 A167	12c brown violet, Mar. 20, 1923	4.75	.35
	deep brown violet	4.75	.35

On special delivery cover
Block of 4
Pa block of 6

564 A167	12c brown violet, Mar. 20, 1923	4.75	.35
	deep brown violet	4.75	.35

On special delivery cover
Block of 4
Pa block of 6

564 A167	12c brown violet, Mar. 20, 1923	4.75	.35
	deep brown violet	4.75	.35

On special delivery cover
Block of 4
Pa block of 6

564 A167	12c brown violet, Mar. 20, 1923	4.75	.35
	deep brown violet	4.75	.35

On special delivery cover
Block of 4
Pa block of 6

564 A167	12c brown violet, Mar. 20, 1923	4.75	.35
	deep brown violet	4.75	.35

On special delivery cover
Block of 4
Pa block of 6

564 A167	12c brown violet, Mar. 20, 1923	4.75	.35
	deep brown violet	4.75	.35

On special delivery cover
Block of 4
Pa block of 6

564 A167	12c brown violet, Mar. 20, 1923	4.75	.35
	deep brown violet	4.75	.35

On special delivery cover
Block of 4
Pa block of 6

564 A167	12c brown violet, Mar. 20, 1923	4.75	.35
	deep brown violet	4.75	.35

On special delivery cover
Block of 4
Pa block of 6

564 A167	12c brown violet, Mar. 20, 1923	4.75	.35
	deep brown violet	4.75	.35

On special delivery cover
Block of 4
Pa block of 6

564 A167	12c brown violet, Mar. 20, 1923	4.75	.35
	deep brown violet	4.75	.35

On special delivery cover
Block of 4
Pa block of 6

564 A167	12c brown violet, Mar. 20, 1923	4.75	.35
	deep brown violet	4.75	.35

On special delivery cover
Block of 4
Pa block of 6

564 A167	12c brown violet, Mar. 20, 1923	4.75	.35
	deep brown violet	4.75	.35

Pa block of 6	475.00
Never hinged	675.00
b. Vert. pair, imperf. horiz.	3.250.
c. Perf. 10 at top and sides	5.000. 11.000.
Never hinged	7.500.

No. 568a is valued in the grade of fine. No. 568c is valued in the grade of fine.



Double Transfer at lower right

569 A172	30c olive brown, Mar. 20, 1923	22.50	.60
	Never hinged	50.00	

On registered cover with other values
Block of 4
Pa block of 6

569 A172	30c olive brown, Mar. 20, 1923	22.50	.60
	Never hinged	50.00	

On registered cover with other values
Block of 4
Pa block of 6

569 A172	30c olive brown, Mar. 20, 1923	22.50	.60
	Never hinged	50.00	

On registered cover with other values
Block of 4
Pa block of 6

569 A172	30c olive brown, Mar. 20, 1923	22.50	.60
	Never hinged	50.00	

On registered cover with other values
Block of 4
Pa block of 6

569 A172	30c olive brown, Mar. 20, 1923	22.50	.60
	Never hinged	50.00	

On registered cover with other values
Block of 4
Pa block of 6

569 A172	30c olive brown, Mar. 20, 1923	22.50	.60
	Never hinged	50.00	

On registered cover with other values
Block of 4
Pa block of 6

569 A172	30c olive brown, Mar. 20, 1923	22.50	.60
	Never hinged	50.00	

On registered cover with other values
Block of 4
Pa block of 6

569 A172	30c olive brown, Mar. 20, 1923	22.50	.60
	Never hinged	50.00	

On registered cover with other values
Block of 4
Pa block of 6

569 A172	30c olive brown, Mar. 20, 1923	22.50	.60
	Never hinged	50.00	

On registered cover with other values
Block of 4
Pa block of 6

569 A172	30c olive brown, Mar. 20, 1923	22.50	.60
	Never hinged	50.00	

On registered cover with other values
Block of 4
Pa block of 6

569 A172	30c olive brown, Mar. 20, 1923	22.50	.60
	Never hinged	50.00	

On registered cover with other values
Block of 4
Pa block of 6

569 A172	30c olive brown, Mar. 20, 1923	22.50	.60
	Never hinged	50.00	

On registered cover with other values
Block of 4
Pa block of 6

569 A172	30c olive brown, Mar. 20, 1923	22.50	.60
	Never hinged	50.00	

On registered cover with other values
Block of 4
Pa block of 6

569 A172	30c olive brown, Mar. 20, 1923	22.50	.60
	Never hinged	50.00	

569a !

"Bridge over Falls" plate scratches



568 A171	25c yellow green, Nov. 11, 1922	13.50	.75
	green	13.50	.75

On contrast airmail cover
Block of 4
Pa block of 6

568 A171	25c yellow green, Nov. 11, 1922	13.50	.75
	green	13.50	.75

On contrast airmail cover
Block of 4
Pa block of 6

568 A171	25c yellow green, Nov. 11, 1922	13.50	.75
	green	13.50	.75

568 A171	25c yellow green, Nov. 11, 1922	13.50	.75
	green	13.50	.75

For other listings of perforated stamps of designs A154 to A173 see:

Nos. 578 & 579, Perf. 11x10
Nos. 581-591, Perf. 10
Nos. 594-596, Perf. 11
Nos. 632-642, 653, 662-696, Perf. 11x10½
Nos. 697-701, Perf. 10x11

This series also includes #622-623 (perf. 11), 684-687 & 720-723.

How about a future program?

VOLUME 91, NO. 7

JULY, 2020

(ISSN 0164-923X)
(USPS 620-200)



The United States Specialist

FOR THE COLLECTOR OF POSTAGE AND REVENUE
STAMP ISSUES OF THE UNITED STATES

— in this issue —



— plus Part Three of America's Conservation Saga —

296

THE UNITED STATES SPECIALIST

A NEW DISCOVERY!

Double Transfer Variety
on Scott #569a "Special" Booklet Paper



Figure 1. Certified example of 569a, SBP, with Double Transfer, Plate 1606S, Pos UR52, cropped and enlarged, twice, with Double Transfer detail circled in yellow.

by **Robert G. Rufe**

USSS #15298 | rrufel@aol.com

Questions?

Exercises? Cheat Sheet...

"Special" Booklet Paper - Plate Numbers at Press from BEP Records (per Southgate)		
Scott No.	Denom.	Plate Numbers and Notes
563b	11¢	17617, 17618, 17619, 17620 - All narrow gauge margins
564b	12¢	18921, 18922, 18923, 19442 - All wide gauge margins, no stars
566a	15¢	17430, 17431, 17432, 17433* - All wide gauge margin, 5-point star plates
567b	20¢	18672, 18673, 18674, 18675, 18688, 18689 - Wide gauge, star plates
568a	25¢	14062*, 14063, 14064, 14065* - All narrow gauge margins
569a	30¢	17446, 17447, 17448, 17449* - All wide gauge margins, no stars
C11b	5¢	Red (Frame) Nos. 19571//19626; Blue (Vignette) Nos. 19545//19619
E13a	15¢	16833*, 16834, 16835, 16836
QE1b	10¢	19553, 19554, 19555, 19556
QE2b	15¢	19557, 19558, 19559, 1956
QE3b	20¢	19541, 19542, 19543, 19544

Note: All Plate Nos. also on Regular Paper

* = Unreported Plate Number (Durland)

Exercises? Pricing Comparisons...

2020 Scott Catalogue Pricing for Special Booklet Paper Varieties vs. Regular Paper Counterparts								
<u>STAMP</u>	<u>MINT LH</u>	<u>NH</u>	<u>USED</u>	<u>PB LH</u>	<u>Durland</u>	<u>PB NH</u>	<u>Block of 4</u>	<u>On Cover</u>
563	\$1.25	\$3.25	\$0.60	\$55.00	\$45.00	\$70.00	\$5.50	\$12.50
563b	\$1.75	\$4.00	\$0.90	\$90.00	\$150.00	\$120.00	\$45.00	\$25.00
564	\$4.75	\$10.50	\$0.35	\$115.00	\$110.00	\$160.00	\$21.00	\$12.50
564b	\$10.00	\$25.00	\$1.00	\$300.00	\$300.00	\$500.00	\$45.00	\$25.00
566	\$16.00	\$35.00	\$0.30	\$275.00	\$275.00	\$400.00	\$70.00	\$3.50
566a	\$30.00	\$65.00	\$2.00	\$450.00	\$600.00	\$650.00	\$130.00	\$12.00
567	\$16.00	\$35.00	\$0.30	\$275.00	\$275.00	\$400.00	\$70.00	\$12.50
567b	\$35.00	\$70.00	\$3.00	\$500.00	\$600.00	\$900.00	\$150.00	\$20.00
568	\$13.50	\$30.00	\$0.75	\$300.00	\$275.00	\$425.00	\$60.00	\$27.50
568a	\$35.00	\$75.00	\$3.25	\$475.00	\$600.00	\$675.00	\$150.00	\$35.00
569	\$22.50	\$50.00	\$0.60	\$325.00	\$275.00	\$475.00	\$100.00	\$20.00
569a	\$45.00	\$100.00	\$3.50	\$500.00	\$600.00	\$900.00	\$200.00	\$35.00
C11	\$5.50	\$10.00	\$0.85	\$42.50	\$50.00	\$57.50	\$25.00	\$3.00
C11b	\$9.00	\$17.50	\$2.00	\$100.00	\$100.00	\$150.00	\$40.00	\$6.00
E13	\$40.00	\$75.00	\$3.75	\$450.00	\$400.00	\$700.00	---	\$55.00
E13a	\$85.00	\$160.00	\$10.00	---	\$2,000.00	---	\$350.00	\$100.00
QE1	\$2.00	\$4.25	\$1.00	\$25.00	\$30.00	\$40.00	\$10.00	NA
QE1a	\$5.00	\$11.00	\$150.00	\$75.00	\$42.00	\$125.00	\$25.00	NA
QE1b	\$2.00	\$4.25	\$1.00	\$25.00	---	\$40.00	\$45.00	\$45.00
QE2	\$2.25	\$4.75	\$0.90	\$30.00	\$35.00	\$47.50	\$11.00	NA
QE2a	\$5.00	\$10.00	\$150.00	\$80.00	\$50.00	\$135.00	\$25.00	NA
QE2b	\$2.25	\$4.75	\$0.90	\$30.00	---	\$47.50	\$11.00	\$45.00
QE3	\$3.75	\$7.75	\$1.50	\$37.50	\$40.00	\$60.00	\$17.50	NA
QE3a	\$7.50	\$15.00	\$150.00	\$85.00	\$60.00	\$150.00	\$37.50	NA
QE3b	\$3.75	\$7.75	\$1.50	\$37.50	---	\$60.00	\$17.50	\$45.00

Show & Tell: C23c - 6¢ Air Mail of 1938.

.1938 ISSUE
ERROR OF COLOR



Normal Colors
Dark Blue & Carmine

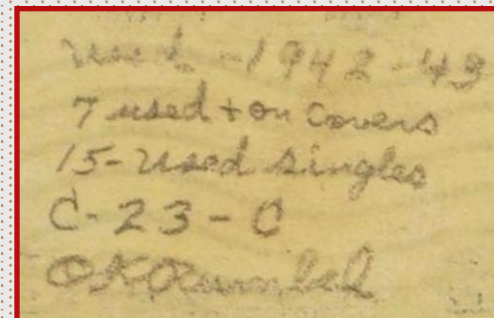


Signed: SANABRIA, KESSLER & BRUECHIG
Error
Ultramarine & Carmine

From "Stamps" Magazine, August 18, 1945
Emil Bruechig advertisement
Scott #23c - only ten sheets of 50 stamps each
(a total of 500 stamps) discovered in Texas
"A true error in color"
- Each stamp signed by Bruechig -



Bruechig, Sanabria, Kessler, Bloch or Rumbel.



FTIR-verified C23c example not known without expert's backstamp!
We are Soliciting "Ultramarine" Patients for Testing – Contact:
rrufe1@aol.com